

Supplementary Information

Macronutrient biogeochemistry in Antarctic land-fast sea ice: Insights from a circumpolar data compilation

Sian F. Henley, Stefano Cozzi, François Fripiat, Delphine Lannuzel, Daiki Nomura, David N. Thomas, Klaus M. Meiners, Martin Vancoppenolle, Kevin Arrigo, Jacqueline Stefels, Maria van Leeuwe, Sebastien Moreau, Elizabeth M. Jones, Agneta Fransson, Melissa Chierici, Bruno Delille

Marine Chemistry (2023), DOI: 10.1016/j.marchem.2023.104324

Table S1. Sampling locations for cruises and field campaigns included in this study, as well as data contributors and references where data are published. Latitudes and longitudes are given in decimal degrees, and their ranges are given as north to south and east to west.

Location name	Latitude / latitude range	Longitude / longitude range	Data contributors (# cores)	References
Dronning Maud Land	-70.1106	5.3638	Sebastien Moreau (n=1)	
Syowa Station	-68.939 to -69.842	39.623 to 38.326	Daiki Nomura et al. (n=15)	Nomura et al., 2018; Sahashi et al., 2022
Davis Station	-68.583	77.967	Florian Deman and François Fripiat (n=6)	Lim et al., 2019; Roukaerts et al., 2021
Casey Station	-66.2186 to -66.301	110.6505 to 110.5	Delphine Lannuzel (n=9)	Lannuzel et al., 2014
SIPEX (RSV Aurora Australis)	-65.5244 to -65.6458	124.7839 to 124.752	Delphine Lannuzel and Klaus Meiners (n=2)	Lannuzel et al., 2011; Meiners et al., 2011
Dumont D'Urville Station	-66.3961 to -66.6667	141.0167 to 139.5953	Bruno Delille (n=49); François Fripiat (n=10)	Fripiat et al., 2015
Victoria Land coast	-74.0041 to -74.8995	166.7785 to 163.7697	Stefano Cozzi (n=52)	Cozzi, 2014
McMurdo Sound	-77.38 to -77.59	166.23 to 165.71	François Fripiat et al. (n=11); Agneta Fransson and Melissa Chierici (n=1)	Roukaerts et al., 2021
Ross Sea	-74.32 to -76.53	172.99 to 165.02	Kevin Arrigo (n=3)	Arrigo et al., 2003
Rothera Station	-67.5583 to -67.623	-68.1228 to -68.1342	Jacqueline Stefels and Maria van Leeuwe (n=39); Elizabeth Jones (n=35); Sian Henley (n=11)	Jones et al., 2022; van Leeuwe et al., 2022
Drescher Inlet	-72.8667	-19.2	David Thomas (n=1)	

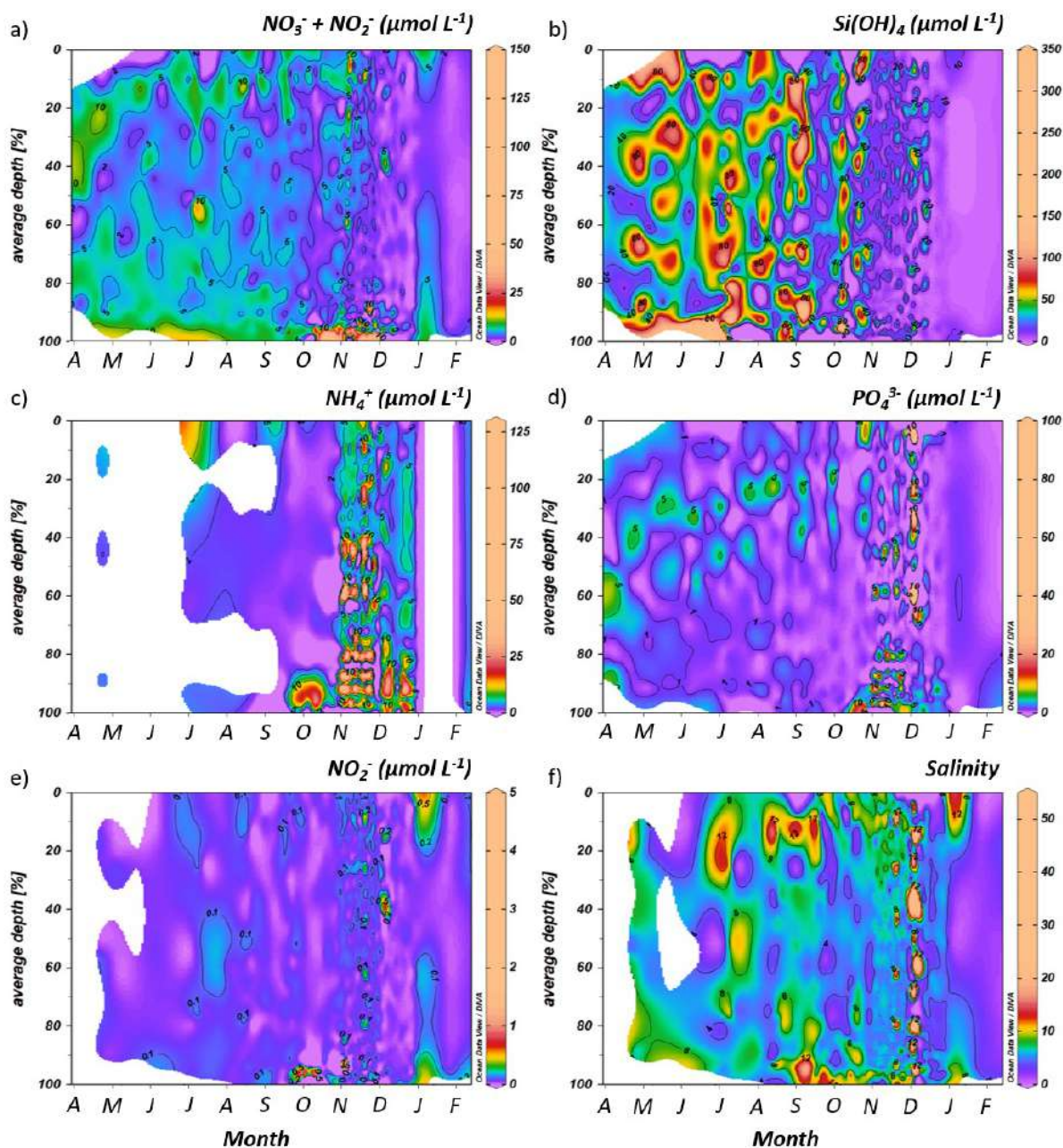


Figure S1. Time-series plots of bulk nutrient concentrations and salinity over the full ice thickness from 1 April to mid-February: (a) nitrate, (b) silicic acid, (c) ammonium, (d) phosphate, (e) nitrite, (f) salinity. Data from all stations, years and ice types are included. Ice core depth is normalised to ice thickness and measured parameters are plotted by sampling date in each year. Note the differences in colour scales between plots.

Table S2. Water column nutrient concentrations from studies associated with fast ice around Antarctica, with references given.

Region/Area	Months	Years	Water type	Depth	Salinity	Pot. Temp.	NO ₃ ⁻	NH ₄ ⁺	NO ₂ ⁻	PO ₄ ³⁻	Si(OH) ₄	References
				m		°C	μmol L ⁻¹	μmol L ⁻¹	μmol L ⁻¹	μmol L ⁻¹	μmol L ⁻¹	
Lutzow-Holm Bay: Syowa Station	Jan.	2010	Coastal waters	1/7 m below fast ice	33.0/29.7	-0.9/0.0	24.4/20.5		0.1/0.1	1.7/1.5	63.4/55.8	Nomura et al., 2011
Lutzow-Holm Bay: Syowa Station	Dec.	2005	Coastal waters	50 m below fast ice	34.0	-1.7	31.2			2.1	76.8	Ichinomiya et al., 2007
Lutzow-Holm Bay: Syowa Station	Dec.	2004	Coastal waters	50 m below fast ice	34.1	-1.75	30.52		0.6	2.07	63.19	Otsuki et al., 2006
Lutzow-Holm Bay: Ongul Strait	Dec. to Feb.	1996-1997	Coastal waters	20-30 m	34.0	-1.67	29-31					Odate and Fukuchi, 2004
Prydz Bay: Davis Station	May to Oct.	1993-1995	Sub-ice water	10 m below fast ice	33.6-34.0	-1.90	25-27			1.9-2.1	50-65	Gibson and Trull, 1999
Prydz Bay: Davis Station	Nov. to Dec.	2015	Sub-ice water	0-10 m below fast ice	32.4-32.7		27.94-30.46	0.01-0.85	0.03-0.08	1.88-2.86	45.65-55.60	Duprat et al., 2019
Prydz Bay	Dec.	2009	Shelf waters	0-500 m	34.40	-1.60	23.33			1.88	58.02	Liang et al., 2016
Prydz Bay	Jan. to Mar.	1990	Shelf waters	0-200 m	33.99	0.40	26.38			1.40		Zhang et al., 2014
Prydz Bay	Dec. to Feb.	1990-1991	Shelf waters	0-200 m	33.83	-0.35	28.25			1.73		Zhang et al., 2014
Prydz Bay	Annual mean - summer	2009-2010-2011-2013	Shelf waters	0-500 m	33.6-34.2	-1.28 to 0.05	17.3-23.9			0.7-2.4	30.2-67.8	Ma et al., 2020
Wilkes Land: Casey Station	Dec.	2016	Summer coastal waters	0 m			2.3	0.3		0.3	16.9	Duprat et al., 2020
Wilkes Land: SIPEX Project (R/V Aurora Australis)	Sep.	2007	Spring shelf waters	0 m and 1 m below fast ice	30.4-31.6	-1.86	25.5-25.9	0.32-0.38	0.1-0.14	1.44-2.42	51.2-53.6	van der Merwe et al., 2009
Adélie Land: Dumont d'Urville	Nov.	1995	Coastal waters	0.5 m below fast ice			7-87				33-75	Riaux-Gobin et al., 2000
Adélie Land: Dumont d'Urville	Nov. to Dec.	1999	Coastal waters	0.5 m below fast ice	34.00		20.00	2.00	0.1-0.3	2.00	20-45	Riaux-Gobin et al., 2005

George V Land	Dec. to Jan.	2000-2001	Coastal waters	50 m below fast ice	34.25	-1.60	29.00				72.00	Vaillancourt et al., 2003
Ross Sea: Terra Nova Bay	Oct. to Dec.	1997, 1999, 2004	Coastal waters	3 m below fast ice	34.76	-1.90	28.00	0.70	0.05	2.00	75.00	Cozzi, 2014
Ross Sea: Terra Nova Bay	Oct. to Feb.	1994-2001	High Salinity Shelf Water	200-800 m	34.88	-1.92	31.00			2.20	80.00	Budillon et al., 2003
Ross Sea: McMurdo Sound	Oct. to Dec.	1989	Coastal waters	1 m below fast ice			32.40	0.50		2.00	77.20	Dieckmann et al., 1992
Ross Sea: McMurdo Sound	Oct. to Dec.	1989	Coastal waters	1 m below fast ice			31.00	0.50	0.20	2.00	60-80	Arrigo et al., 1995
Ross Sea: western region	Oct. to Feb.	1967-2016	Subsurface waters	15 m			29.20			2.06	78.00	Smith and Kaufman, 2018
Amundsen Sea	Dec. to Jan.	2010-2011	Amundsen Sea Polynya	170 m		-1.6	29.4	0.39		1.91		Sipler and Connelly, 2015
Amundsen Sea	Feb. to Mar.	2012	Coastal waters	Light Depth 1%			22.6	1.26		1.85	75.65	Kim et al., 2016
Amundsen Sea	Jan. to Feb.	2017	Seawater down nutricline	200-400 m	34.5	1.0	34.2			2.1	75.0	Janssen et al., 2020
Ryder Bay (Rothera Station)	Jan. to Dec.	2013-2016	Coastal waters	0-15 m	33.72	-1.42	27.86	1.70	0.13	1.92	76.76	Henley et al., 2020
Ryder Bay (Rothera Station)	Jul. to Aug.	1997-2006	Winter shelf waters	0-100 m	33.8	-1.9	35	1.3		2.5	65	Clarke et al., 2008
Ryder Bay (Rothera Station)	Nov. to March	2013-2017	Coastal waters	0-5 m	32.97	0.31	11.39		0.12	0.74	53.76	van Leeuwe et al., 2020
Ryder Bay (Rothera Station)	Nov. to March	2013-2017	Coastal waters	15 m	33.21	-0.43	16.23		0.14	1.03	62.01	van Leeuwe et al., 2020
Ryder Bay (Rothera Station)	April to Oct.	2014-2016	Coastal waters	15 m	33.56	-1.70	23.44		0.27	1.54	74.44	van Leeuwe et al., 2020
Weddell Sea: Drescher Inlet	Jan. to Feb.	1995	Coastal waters	1 m below fast ice	33.5		20.58			1.46	44.37	Günther et al., 1999
Weddell Sea: Drescher Inlet	Feb.	1998	Coastal waters	50, 150, 400 m	34.1	-1.2 to -1.8	25.4	1.4	0.1	1.3	65.2	Thomas et al., 2001

Weddell Sea: southern region	Oct. to Dec.	1986	Coastal waters	1 m below fast ice	34.40	-1.80	30.00			2.00	60.00	Smetacek et al., 1992
Weddell Sea: Atka Bay	Jun. to Dec.	1995	Coastal waters	20 m	34.5		29.09	0.06		1.49	63.13	Günther and Dieckmann, 1999

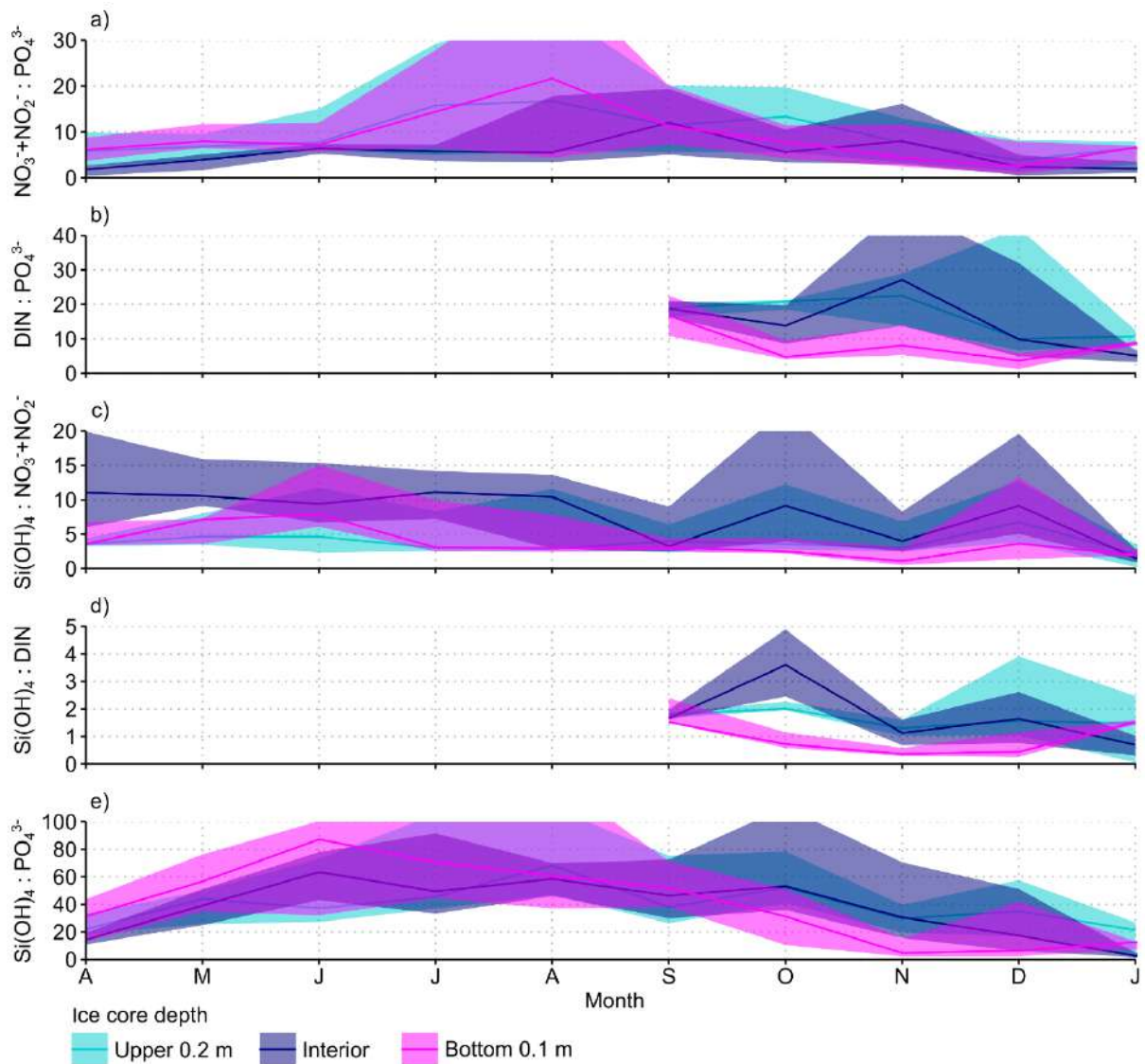


Figure S2. Time-series plots of nutrient stoichiometric ratios: (a) $\text{NO}_3^- + \text{NO}_2^- : \text{PO}_4^{3-}$; (b) Total DIN: PO_4^{3-} ; (c) $\text{Si}(\text{OH})_4 : \text{NO}_3^- + \text{NO}_2^-$; (d) $\text{Si}(\text{OH})_4 : \text{DIN}$; (e) $\text{Si}(\text{OH})_4 : \text{PO}_4^{3-}$. Data are binned by calendar month and shown by ice core depth (where light blue=upper 0.2 m, dark blue=interior, magenta=bottom 0.1 m), with lines connecting monthly median values and shaded areas showing interquartile ranges. In this analysis, ratios based on nitrate give much better data coverage than DIN due to the lack of ammonium data from winter. Substantial variability in these ratios in upper, interior and bottom ice layers over the seasonal cycle supports Figure 11 in showing the coupling and decoupling of DIN species, phosphate and silicic acid within the ice matrix.

Supplementary references

- Arrigo, K.R., Dieckmann, G., Gosselin, M., Robinson, D.H., Fritsen, C.H., Sullivan, C.W. 1995. High resolution study of the platelet ice ecosystem in McMurdo Sound, Antarctica: biomass, nutrient, and production profiles within a dense microalgal bloom. *Mar. Ecol. Prog. Ser.* 127, 255-268. doi:<https://doi.org/10.3354/Meps127255>
- Arrigo, K. R., Robinson, D. H., Dunbar, R. B., Leventer, A. R., & Lizotte, M. P. 2003. Physical control of chlorophyll a, POC, and TPN distributions in the pack ice of the Ross Sea, Antarctica. *Journal of Geophysical Research-Oceans*, 108(C10). doi: 10.1029/2001jc001138
- Budillon, G., Pacciaroni, M., Cozzi, S., Rivaro, P., Catalano, G., Ianni, C., Cantoni, C. 2003. An optimum multiparameter mixing analysis of the shelf waters in the Ross Sea. *Antarctic Science* 15(1), 105-118. Doi:<https://doi.org/10.1017/S095410200300110X>
- Clarke A., Meredith M.P., Wallace M.I., Brandon M.A., Thomas D.N. 2008. Seasonal and interannual variability in temperature, chlorophyll and macronutrients in northern Marguerite Bay, Antarctica. *Deep-Sea Research II* 55, 1988- 2006. Doi: <https://doi.org/10.1016/j.dsr2.2008.04.035>
- Cozzi, S. 2014. Multi-scale variability of ambient conditions, fast ice dynamics and biogeochemistry in the coastal zone of Victoria Land (Ross Sea). *Antarctic Science* 26(4), 427-444. doi:<https://doi.org/10.1017/S0954102013000813>
- Dieckmann, G.S., Arrigo, K., Sullivan, C.V. 1992. A high-resolution sampler for nutrient and chlorophyll a profiles of the sea ice platelet layer and underlying water column below fast ice in polar oceans: preliminary results. *Mar. Ecol. Prog. Ser.* 80, 291-300. Doi:<https://doi.org/10.3354/meps080291>
- Duprat, L., Kanna, N., Janssens, J., Roukaerts, A., Deman, F., Townsend, A. T., Meiners, K. M., van der Merwe, P., & Lannuzel, D. 2019. Enhanced Iron Flux to Antarctic Sea Ice via Dust Deposition From Ice-Free Coastal Areas. *Journal of Geophysical Research: Oceans*, 124(12), 8538-8557. doi:<https://doi.org/10.1029/2019JC015221>
- Duprat, L., Corkill, M., Genovese, C., Townsend, A.T., Moreau, S., Meiners, K.M., Lannuzel, D. 2020. Nutrient Distribution in East Antarctic Summer Sea Ice: A Potential Iron Contribution From Glacial Basal Melt. *Journal of Geophysical Research: Oceans* 125, e2020JC016130. Doi:<https://doi.org/10.1029/2020JC016130>
- Fripiat, F., Sigman, D. M., Masse, G., & Tison, J. L. 2015. High turnover rates indicated by changes in the fixed N forms and their stable isotopes in Antarctic landfast sea ice. *Journal of Geophysical Research-Oceans*, 120(4), 3079-3097. doi: 10.1002/2014jc010583
- Gibson, J.A.E., Trull, T.W. 1999. Annual cycle of fCO₂ under sea-ice and in open water in Prydz Bay, East Antarctica. *Marine Chemistry* 66, 187–200. Doi:[https://doi.org/10.1016/S0304-4203\(99\)00040-7](https://doi.org/10.1016/S0304-4203(99)00040-7)
- Günther, S., Dieckmann, G.S. 1999. Seasonal development of algal biomass in snow-covered fast ice and the underlying platelet layer in the Weddell Sea, Antarctica. *Antarctic Science* 11, 305-315. Doi:<https://doi.org/10.1017/S0954102099000395>
- Günther, S., Gleitz, M., Dieckmann, G.S. 1999. Biogeochemistry of Antarctic sea ice: a case study on platelet ice layers at Drescher Inlet, Weddell Sea. *Mar. Ecol. Progr. Ser.* 177, 1-13. Doi:<https://doi.org/10.3354/meps177001>

- Henley, S. F., Cavan, E. L., Fawcett, S. E., Kerr, R., Monteiro, T., Sherrell, R. M., Bowie, A. R., Boyd, P. W., Barnes, D. K. A., Schloss, I. R., Marshall, T., Flynn, R., & Smith, S. 2020. Changing Biogeochemistry of the Southern Ocean and Its Ecosystem Implications. *Frontiers in Marine Science*, 7. Doi:<https://doi.org/10.3389/fmars.2020.00581>
- Ichinomiya, M., Honda, M., Shimoda, H., Saito, K., Odate, T., Fukuchi, M., Taniguchi, A. 2007. Structure of the summer under fast ice microbial community near Syowa Station, eastern Antarctica. *Polar Biol* 30, 1285-1293. Doi: <https://doi.org/10.1007/s00300-007-0289-8>
- Janssen, D.J., Sieber, M., Ellwood, M. J., Conway, T.M., Barrett, P.M., Chen, X., de Souza, G.F., Hassler, C.S., Jaccard, S.L. 2020. Trace metal and nutrient dynamics across broad biogeochemical gradients in the Indian and Pacific sectors of the Southern Ocean. *Mar. Chem.* 221, 103773. Doi: <https://doi.org/10.1016/j.marchem.2020.103773>
- Jones, E. M., Henley, S. F., van Leeuwe, M. A., Stefels, J., Meredith, M. P., Fenton, M., & Venables, H. J. 2022. Carbon and nutrient cycling in Antarctic landfast sea ice from winter to summer. *Limnology and Oceanography*. doi: <https://doi.org/10.1002/lno.12260>
- Kim, B.K., Lee, J.H., Joo, H., Song, H.J., Yang, E.J., Lee, S.H., Lee, S.H. 2016. Macromolecular compositions of phytoplankton in the Amundsen Sea, Antarctica. *Deep-Sea Research II* 123, 42-49. Doi: <https://doi.org/10.1016/j.dsr2.2015.04.024>
- Lannuzel, D., Bowie, A. R., Remenyi, T., Lam, P., Townsend, A., Ibsanmi, E., Butler, E., Wagener, T., & Schoemann, V. 2011. Distributions of dissolved and particulate iron in the sub-Antarctic and Polar Frontal Southern Ocean (Australian sector). *Deep Sea Research Part II: Topical Studies in Oceanography*, 58(21), 2094-2112. doi: <https://doi.org/10.1016/j.dsr2.2011.05.027>
- Lannuzel, D., van der Merwe, P. C., Townsend, A. T., & Bowie, A. R. 2014. Size fractionation of iron, manganese and aluminium in Antarctic fast ice reveals a lithogenic origin and low iron solubility. *Marine Chemistry*, 161, 47-56. doi: <https://doi.org/10.1016/j.marchem.2014.02.006>
- Liang, Y., Bai, X., Jiang, Y., Wang, M., He, J., McMinn, A. 2016. Distribution of marine viruses and their potential hosts in Prydz Bay and adjacent Southern Ocean, Antarctic. *Polar Biol* 39, 365–378. doi:<https://doi.org/10.1007/s00300-015-1787-8>
- Lim, S. M., Moreau, S., Vancoppenolle, M., Deman, F., Roukaerts, A., Meiners, K. M., Janssens, J., & Lannuzel, D. 2019. Field Observations and Physical-Biogeochemical Modeling Suggest Low Silicon Affinity for Antarctic Fast Ice Diatoms. *Journal of Geophysical Research: Oceans*, 124(11), 7837-7853. doi: <https://doi.org/10.1029/2018JC014458>
- Ma, J., Song, J., Li, X., Yuan, H., Li, N., Duan, L., Wang, Q. 2020. The change of nutrient situation in the Prydz Bay waters along longitude 73°E, Antarctica, in the context of global environmental change. *Marine Pollution Bulletin* 154, 111071. Doi: 10.1016/j.marpolbul.2020.111071
- Meiners, K. M., Norman, L., Granskog, M. A., Krell, A., Heil, P., & Thomas, D. N. 2011. Physico-ecobiogeochemistry of East Antarctic pack ice during the winter-spring transition. *Deep Sea Research Part II: Topical Studies in Oceanography*, 58(9), 1172-1181. doi: <https://doi.org/10.1016/j.dsr2.2010.10.033>
- Nomura, D., Simizu, D., Shinagawa, H., Oouchida, C., & Fukuchi, M. 2011. Biogeochemical properties of water in surface ponds on Antarctic fast ice and their relationship with underlying sea-ice properties. *Journal of Glaciology*, 57(205), 848-856. doi:10.3189/002214311798043825

- Nomura, D., Aoki, S., Simizu, D., & Iida, T. 2018. Influence of Sea Ice Crack Formation on the Spatial Distribution of Nutrients and Microalgae in Flooded Antarctic Multiyear Ice. *Journal of Geophysical Research: Oceans*, 123(2), 939-951. doi: <https://doi.org/10.1002/2017JC012941>
- Odate, T., Fukuchi, M. 2004. Temporal changes in chlorophyll α and nitrate concentrations under fast ice near Syowa Station, Antarctica, in austral summer. *Antarctic Record* 48, 157-164. Doi: <https://doi.org/10.15094/00009293>
- Otsuki, A.S., Odate, T., Kudoh, S., Fukuchi, M. 2006. Temporal changes of phytoplankton and nutrients under the fast ice in the Ongul Strait during the austral summer of 2004/05. *Antarctic Record* 50, 231-250.
- Riaux-Gobin, C., Treguer, P., Dieckmann, G., Maria, E., Vétion, G., Poulin, M. 2005. Land-fast ice off Adélie Land (Antarctica): short-term variations in nutrients and chlorophyll just before ice break-up. *Journal of Marine Systems* 55, 235– 248. Doi: 10.1016/j.jmarsys.2004.08.003
- Riaux-Gobin, C., Treguer, P., Poulin, M., Vétion, G. 2000. Nutrients, algal biomass and communities in land-fast ice and seawater off Adélie Land (Antarctica). *Antarctic Science* 12, 160-171. Doi: <https://doi.org/10.1017/S0954102000000213>
- Roukaerts, A., Deman, F., Van der Linden, F., Carnat, G., Bratkic, A., Moreau, S., Lannuzel, D., Dehairs, F., Delille, B., Tison, J.-L., & Fripiat, F. 2021. The biogeochemical role of a microbial biofilm in sea ice: Antarctic landfast sea ice as a case study. *Elementa: Science of the Anthropocene*, 9(1), 00134. doi: 10.1525/elementa.2020.00134
- Sahashi, R., Nomura, D., Toyota, T., Tozawa, M., Ito, M., Wongpan, P., Ono, K., Simizu, D., Naoki, K., Nosaka, Y., Tamura, T., Aoki, S., & Ushio, S. 2022. Effects of Snow and Remineralization Processes on Nutrient Distributions in Multi-Year Antarctic Landfast Sea Ice. *Journal of Geophysical Research: Oceans*, 127(7), e2021JC018371. doi: <https://doi.org/10.1029/2021JC018371>
- Sipler, R.E., Connelly, T.L. 2015. Bioavailability of surface dissolved organic matter to aphotic bacterial communities in the Amundsen Sea Polynya, Antarctica. *Elementa Science of the Anthropocene* 3, 000060. doi:<https://doi.org/10.12952/journal.elementa.000060>
- Smetacek, V., Scharek, R., Gordon, L.I., Eicken, H., Fahrbach, E., Rohardt, G., Moore, S. 1992. Early spring phytoplankton blooms in ice platelet layers of the southern Weddell Sea, Antarctica. *Deep-Sea Research* 39, 153-168. Doi: [https://doi.org/10.1016/0198-0149\(92\)90102-Y](https://doi.org/10.1016/0198-0149(92)90102-Y)
- Smith, W.O. Jr., Kaufman, D.E. 2018. Climatological temporal and spatial distributions of nutrients and particulate matter in the Ross Sea. *Progress in Oceanography* 168, 182-195. Doi: <https://doi.org/10.1016/j.pocean.2018.10.003>
- Thomas, D.N., Kennedy, H., Kattner, G., Gerdes, D., Gough, C., Dieckmann, G.S. 2001. Biogeochemistry of platelet ice: its influence on particle flux under fast ice in the Weddell Sea, Antarctica. *Polar Biology* 24, 486-496. Doi:<https://doi.org/10.1007/s003000100243>
- Vaillancourt, R.D., Sambrotto, R.N., Green, S., Matsuda, A. 2003. Phytoplankton biomass and photosynthetic competency in the summertime Mertz Glacier Region of East Antarctica. *Deep-Sea Research II* 50, 1415–1440. Doi:[https://doi.org/10.1016/S0967-0645\(03\)00077-8](https://doi.org/10.1016/S0967-0645(03)00077-8)
- van der Merwe, P., Lannuzel, D., Nichols, C. A. M., Meiners, K., Heil, P., Norman, L., Thomas, D. N., & Bowie, A. R. 2009. Biogeochemical observations during the winter-spring transition in East Antarctic sea ice: Evidence of iron and exopolysaccharide controls. *Marine Chemistry*, 115(3-4), 163-175. DOI: 10.1016/j.marchem.2009.08.001

- van Leeuwe, M. A., Fenton, M., Davey, E., Rintala, J.-M., Jones, E. M., Meredith, M. P., & Stefels, J. 2022. On the phenology and seeding potential of sea-ice microalgal species. *Elementa: Science of the Anthropocene*, 10(1), 00029. doi: 10.1525/elementa.2021.00029
- van Leeuwe, M. A., Webb, A. L., Venables, H. J., Visser, R. J. W., Meredith, M. P., Elzenga, J. T. M., & Stefels, J. 2020. Annual patterns in phytoplankton phenology in Antarctic coastal waters explained by environmental drivers. *Limnology and Oceanography*, 65(7), 1651-1668. doi: <https://doi.org/10.1002/lno.11477>
- Zhang, H., Han, Z., Zhao, J., Yu, P., Hu, C., Sun, W., Yang, D., Zhu, G., Lu, B., Peter, H.U., Vetter, W. 2014. Phytoplankton and chlorophyll a relationships with ENSO in Prydz Bay, East Antarctica. *Science China Earth Sciences* volume 57, 3073–3083. Doi:<https://doi.org/10.1007/s11430-014-4939-8>