

Manuscript Number: FOODRES-D-18-02135R2

Title: ASSESSING FISH AUTHENTICITY BY DIRECT ANALYSIS IN REAL TIME-HIGH RESOLUTION MASS SPECTROMETRY AND MULTIVARIATE ANALYSIS: DISCRIMINATION BETWEEN WILD-TYPE AND FARMED SALMONS.

Article Type: Research Articles

Keywords: Direct Analysis in Real Time-High Resolution Mass Spectrometry (DART-HRMS), food authenticity, salmon, multivariate analysis, validation.

Corresponding Author: Dr. Linda Monaci, PhD

Corresponding Author's Institution: CNR

First Author: Giuseppina M Fiorino

Order of Authors: Giuseppina M Fiorino; Ilario Losito, professor; Elisabetta De Angelis, PhD; Marco Arlorio, Professor; Antonio F Logireco, Director; Linda Monaci, PhD

Abstract: The constant increase in seafood consumption worldwide has led to a parallel growth of the incidence of products obtained by aquaculture on the market, but also of the fraudulent commercialization of farmed products as wild-type ones. A careful characterization of the lipid component of seafood products based on chromatography-mass spectrometry techniques has been reported as a promising approach to reliably differentiate farmed from wild-type products. In this context, a fast method based on Direct Analysis in Real Time (DART) coupled to High Resolution Mass Spectrometry (HRMS) based on a single stage Orbitrap mass analyzer, integrated by Principal Component Analysis (PCA), was developed in the present study and applied to scout for spectral features useful to discriminate wild-type from farmed salmons of *Salmo salar* species. In particular, normalized intensities obtained for the 30 most intense signals (all referred to fatty acids, FA) detected in negative ion DART-HRMS spectra of the lipid extracts of salmon fillets [26 wild-type from Canada, 74 farmed from Canada (25), Norway (25) and Chile (24)] were considered as the variables for PCA. The scatterplot referred to the first two principal components showed a clear distinction between wild-type salmons and farmed ones, which gathered as a unique cluster, despite the remarkable differences in their geographical origin. In accordance with previous studies based on more complex and time-demanding analytical approaches, three saturated (14:0, 16:0 and 18:0) FA, along with unsaturated ones having 20 or 22 carbon atoms, were found as the main discriminating variables for wild-type salmons, whereas FA with compositions 18:1, 18:2, 18:3 and several oxidized forms arising from them were found to have a significantly higher incidence in farmed salmons. The method was further validated by Discriminant Analysis (DA) performed on the same dataset used for PCA integrated by data obtained from 6 commercial samples, putatively referred to farmed Norwegian salmons. Results showed that 100% of the latter were correctly classified as farmed salmons. Relative abundances of DART-HRMS signals related to

specific FA appear then very promising for the differentiation of wild-type salmons from farmed ones, a very relevant issue in the context of consumers' protection from seafood frauds.

20/09/2018

Dear Editor,

we thank you for commenting about the manuscript and the recommendation made by the reviewer 3 asking for validation. As requested, more samples collected from the market (considered unknown) were taken into consideration in the study in order to better support our data and increase the value of the paper.

We took some time to perform other experiments and to analyse all data also by linear discrimination analysis that allowed us to also validated the system. According to the results obtained All unknown samples (purchased from the market and claimed farmed, Norway origin) were correctly classified according to the DA function.

We agree with the reviewer 3 that the model is now more robust. These further investigation contributed to increase the value of the paper.

In consideration of the efforts done and the good data obtained, we do hope the paper can now be considered suitable for publication in the journal Food Research International.

Please find hereby attached the revised version of the paper with few revisions highlighted in red.

Looking forward to receiving you final decision.

Sincerely yours,

Dr. Linda Monaci.

20/09/2018

- Reviewer #1: All questions have been solved.

We than reviewer 1 and 2 for their positive feedback on the paper.

- Reviewer #3: The authors provided in an excellent way answers and integrations to all the different reviewers' comments and observations.

On the other hand, in my opinion it remains a precise point that takes me to the decision of not approving a direct publication of the work as it is now.

I mean that the same authors stated: "...Based on our results, 6 ions were selected to be employed for such discrimination, which was tested on 2 unknown samples, claimed as farmed, purchased from the market. Nonetheless, we recognize that a more robust approach will be necessary for validating the method, e.g. by using a suitable multivariate statistical model. This info was added, for completeness, to the last part of the Results and discussion section, also highlighting that the number of unknown samples will be increased to make the validation more reliable..."

Exactly for that reason, I remain of the opinion that Food Research International should encourage the authors to complete the validation increasing the number of unknown samples and then make a new submission to the journal.

We took the reviewer's recommendation into account and widened the number of salmon samples analysed in order to better support our data and increase the value of the paper. These samples were indeed considered unknown (although we knew were from Norway and farmed) and a supervised statistical method was also investigated namely discrimination analysis (DA) that allowed us to also validate the model. According to the results obtained all unknown samples (purchased form the market and claimed farmed, Norway origin) were correctly classified using the DA function. All the statistical parameters obtained were introduced in the text in the subsection Linear Discriminant Analysis. A new figure showing the root values obtained for all the 106 samples analysed has been also added to the paper (fig 6) and the table 2 was also amended to include these additional samples analyses.

In consideration of the good data obtained, we do hope the paper can now be considered suitable for publication in the journal Food Research International.

HIGHLIGHTS

- A ~~fast~~ DART-HRMS method ~~was~~ developed to discriminate wild-type from farmed salmons
- 30 most relevant DART-HRMS signals, assigned to fatty acids (FA), were considered for PCA
- multivariate analysis indicated several FAs as potential discriminants between both categories
- DART-HRMS demonstrated to be a promising ~~fast~~ tool to recognize the two salmon types

1
2
3
4
5
6
7
8
9
10
11
12
13
14
15
16
17
18
19
20
21
22
23
24
25
26
27
28
29
30
31
32
33
34
35
36
37
38
39
40
41
42
43
44
45
46
47
48
49
50
51
52
53
54
55
56
57
58
59
60
61
62
63
64
65

**~~ASSESSING~~EVALUATION OF FISH AUTHENTICITY BY DIRECT ANALYSIS IN REAL
TIME-HIGH RESOLUTION MASS SPECTROMETRY AND MULTIVARIATE
ANALYSIS: DISCRIMINATION BETWEEN WILD-TYPE AND FARMED SALMONS.**

**Giuseppina M. Fiorino^a, Ilario Losito^{a, b}, Elisabetta De Angelis^a, Marco Arlorio^c, Antonio F.
Logrieco^a, Linda Monaci^{a*}**

^a *Institute of Sciences of Food Production, National Research Council (ISPA-CNR), Bari, Italy.*

^b *Department of Chemistry, University of Bari "Aldo Moro", Via Orabona 4, 70126 Bari*

^c *UNIUPO, Università degli Studi del Piemonte Orientale "Amedeo Avogadro"*

Corresponding Author:

*Dr Linda Monaci, CNR-ISPA

Email: linda.monaci@ispa.cnr.it

1
2
3 **Abstract**
4

5 The constant increase in seafood consumption worldwide has led to a parallel growth of the
6 incidence of products obtained by aquaculture on the market, but also of the fraudulent
7 commercialization of farmed products as wild-type ones. A careful characterization of the lipid
8 component of seafood products based on chromatography-mass spectrometry techniques has been
9 reported as a promising approach to reliably differentiate farmed from wild-type products. In this
10 context, a fast method based on Direct Analysis in Real Time (DART) coupled to High Resolution
11 Mass Spectrometry (HRMS) based on a single stage Orbitrap mass analyzer, integrated by Principal
12 Component Analysis (PCA), was developed in the present study and applied to scout for spectral
13 features useful to discriminate wild-type from farmed salmon of *Salmo salar* species. In particular,
14 normalized intensities obtained for the 30 most intense signals (all referred to fatty acids, FA)
15 detected in negative ion DART-HRMS spectra of the lipid extracts of salmon fillets [26 wild-type
16 from Canada, 74 farmed from Canada (25), Norway (25) and Chile (24)] were considered as the
17 variables for PCA. The *scatterplot* referred to the first two principal components showed a clear
18 distinction between wild-type salmon and farmed ones, which gathered as a unique cluster, despite
19 the remarkable differences in their geographical origin. In accordance with previous studies based on
20 more complex and time-demanding analytical approaches, three saturated (14:0, 16:0 and 18:0) FA,
21 along with unsaturated ones having 20 or 22 carbon atoms, were found as the main discriminating
22 variables for wild-type salmon, whereas FA with compositions 18:1, 18:2, 18:3 and several oxidized
23 forms arising from them were found to have a significantly higher incidence in farmed salmon. **The**
24 **method was further validated by Discriminant Analysis (DA) performed on the same dataset used for**
25 **PCA integrated by data obtained from 6 commercial samples, putatively referred to farmed**
26 **Norwegian salmon. Results showed that 100% of the latter were correctly classified as farmed**
27 **salmon. Relative abundances of DART-HRMS signals related to specific FA appear then very**
28
29
30
31
32
33
34
35
36
37
38
39
40
41
42
43
44
45
46
47
48
49
50
51
52
53
54
55
56
57
58
59
60
61
62
63
64
65

1
2
3
4
5
6
7
8
9
10
11
12
13
14
15
16
17
18
19
20
21
22
23
24
25
26
27
28
29
30
31
32
33
34
35
36
37
38
39
40
41
42
43
44
45
46
47
48
49
50
51
52
53
54
55
56
57
58
59
60
61
62
63
64
65

promising for the differentiation of wild-type salmons from farmed ones, a very relevant issue in the context of consumers' protection from seafood frauds.

KEYWORDS: Direct Analysis in Real Time-High Resolution Mass Spectrometry (DART-HRMS), food authenticity, salmon, -multivariate analysis, validation.

Introduction

Increasing interest has been devoted in recent years to fishery products and in particular to salmon, due to the health benefits offered by the consumption of this fish. This is related to its high content in polyunsaturated fatty acids (PUFA), like docosahexaenoic (DHA, chain composition 22:6, according to the conventional nomenclature), eicosapentaenoic (EPA, 20:5), linolenic (LA, 18:2) and alpha-linolenic(ALA, 18:3) ones^[1-3]. Although human body is able to synthesize most of the fats it needs starting from nutrients introduced through a normal diet, linoleic and alpha-linolenic acids are essential fatty acids, i.e., they cannot be naturally synthesized and must be assumed directly from the food. Indeed, they represent the starting point for the biosynthesis of the so-called omega-3 and omega-6 fatty acids^[4], particularly abundant in plants, including flaxseeds, walnuts and soybeans, and in fish like salmon^[5]. Omega-3 fatty acids play important roles in the body as components of the phospholipids representing the building blocks of cell membranes^[6]. In addition to their structural role in cell membranes, omega-3 and omega-6 FA provide energy for the body and are used to synthesize compounds known as *eicosanoids*, that in turn have wide-ranging functions in the cardiovascular, pulmonary, immune, and endocrine systems^[4,7]. In particular, ALA can be converted into EPA and then to DHA, but the conversion (which occurs primarily in the liver) is very limited, with reported rates of less than 15%^[8]. Therefore, consuming EPA and DHA directly from foods and/or dietary supplements is the only practical way to increase the levels of these fatty acids in the body.

The European Food Safety Authority (EFSA) has recently issued a recommendation for an adult population intake of 250 mg of EPA+DHA/day^[9] and a consumption of fish twice a week (one of which to be oily fish) for individuals considered to be at risk of cardiovascular disease.^[10]

Salmon is certainly a source of valuable polyunsaturated fatty acids, yet the actual amount and integrity of the latter into its tissues can be significantly influenced by its origin, i.e., if it is obtained by capture or aquaculture, and, in the case of aquaculture, by the type of feeding and the conditions

1
2
3 of farming ^[11-13]. In particular, it is well known that wild-type salmon is richer in the more valuable
4
5 omega-3 fatty acids, compared to omega-6^[1,14] . In the last years this has caused a growing demand
6
7 for wild-type salmon, often with a specified geographical origin, yet the actual availability of this
8
9 type of salmon is increasingly limited. As a result, wild-type salmon prices have been increasing
10
11 significantly and, accordingly, food frauds aiming at classifying and selling farmed salmon as wild-
12
13 type one have become a serious concern ^[15-17]. In order to protect consumers from such frauds and, at
14
15 the same time, to guarantee their safety, a labeling regulation for fishery and aquaculture products
16
17 has been issued in 2000 in the European Union (EU) ^[18,19]. This regulation, emphasizing the
18
19 commercial and scientific name, the modality of production (capture or aquaculture) and the
20
21 geographical origin of a seafood product, represents a helpful set of information for the consumers
22
23 who can be aware of the qualitative, geographic and productive features of fishery items. A system
24
25 for the traceability of food (including fishery and aquaculture products) and feed has been also set up
26
27 by the European Food Safety Authority (EFSA) to assure food safety at all stages^[20]. EU Regulations
28
29 1169/2011^[21], dealing with Food Information to Consumers (FIC), and 1379/2013^[22], concerning the
30
31 Common Market Organization (CMO) of fishery and aquaculture products, provided a more
32
33 extensive legislation framework about identification and labelling of fishery and aquaculture
34
35 products. In particular, Regulation 1379/2013 contributed to the implementation of traceability
36
37 protocols for fishery products, encouraging competent national authorities to make use of the
38
39 forefront technology to deter operators from the false labeling of products ^[22].

40
41 The context discussed so far has generated the urgent need to develop sensitive and fast analytical
42
43 methods able to deliver, in the shortest time possible, a useful result in terms of fish authenticity.
44
45 Several methods and techniques, mainly based on the measurement of sensory and physical
46
47 characteristics, and the analysis of volatile compounds, microorganisms, proteins and lipids, have
48
49 been developed in recent years to assess fish freshness or geographic origin ^[23-26]. These methods can
50
51 be in general categorized into two types, based on biological or physico-chemical techniques ^[24,27].

Field Code Changed

Field Code Changed

1
2
3 Among the latter, mass spectrometry based on different ionization sources has been successfully
4 exploited to assess fish (including salmon) quality and geographic origin ^[17, 28-30]. A further MS-
5 related promising approach to the assessment of food authenticity, described for the first time by
6 Vaclavik *et al.* ^[31], is based on the use of the so-called Direct Analysis in Real Time (DART)
7 ionization source. Many papers recently published on this regard, proved the applicability of DART-
8 MS in detecting food adulteration or in discriminating authentic from non-authentic food through the
9 monitoring of specific markers and appropriate statistical analysis ^[32-33]. As for fishery products,
10 DART-HRMS was applied to study fish metabolomics ^[34], and, recently, it was exploited in our
11 laboratory to evaluate salmon freshness ^[35]. The latter study was targeted on fatty acids released in
12 salmon muscles as the result of hydrolysis occurring on main lipids (phospholipids, triacylglycerols)
13 during prolonged storage. Actually, due to its rapidity and high throughput potential, DART-HRMS
14 may represent a powerful approach also to the assessment of seafood authenticity, yet, to the best of
15 our knowledge, no study based on this technique has been performed so far in this context. Starting
16 from this consideration, the development of an untargeted method based on DART-HRMS, to be
17 applied for a fast and high throughput analysis of salmons of *Salmo salar* species, aiming at the
18 discrimination between farmed and wild-type individuals, has been undertaken in our laboratories
19 and will be described in detail in the present paper.
20
21
22
23
24
25
26
27
28
29
30
31
32
33
34
35
36
37
38
39

40 **2. Materials and Methods**

41 **2.1 Chemicals and salmon samples**

42
43
44
45 Liquid chromatography-grade methanol and 2-propanol were purchased from VWR International
46 (Fontenay-sous-France, France), while chloroform (same grade) was provided by Merck (Darmstadt,
47 Germany).
48
49
50
51
52
53
54
55
56
57
58
59
60
61
62
63
64
65

1
2
3 The salmon samples analyzed during the present work were obtained in the framework of an
4 international, EU-funded, project called *Food Integrity* and, in particular, within Working Package
5 18, whose aim is to harmonize and develop fast and untargeted analytical methods to assess the
6 integrity of foods. More specifically, 26 wild-type (WT) salmon captured in Canada and a total of
7 74 farmed salmon, arising from aquaculture plants of Canada (25), Norway (25) and Chile (24), all
8 of *Salmo salar* species, were considered in this investigation. The bones and skin were removed from
9 each individual salmon and fillets were grinded under refrigeration from the provider (Merieux
10 Nutriscience, Chicago, IL, USA) by following the same sample preparation protocol. The
11 homogenate of each sample was weighed and a 200 g aliquot was placed into a glass jar and shipped
12 to our laboratory under freezing conditions (-20 °C). Once arrived at the laboratory the samples were
13 stored at -20°C before lipid extraction and DART-MS analysis. **In order to validate the approach**
14 **developed during the present study, 6 additional salmon samples, purchased from local retailers and**
15 **claimed as farmed in Norway, were considered for lipid extraction and subsequent DART-HRMS**
16 **analysis.**
17
18
19
20
21
22
23
24
25
26
27
28
29
30
31
32
33

34 **2.2 Lipid extraction from salmon samples**

35
36 All homogenized samples were extracted according to a slightly modified version of the Bligh &
37 Dyer protocol^[36]. Briefly, 2.5 g of homogenized sample were withdrawn, transferred into a glass tube
38 and combined with 5 mL of refrigerated chloroform and 5 mL of refrigerated methanol. The
39 resulting mixture was manually stirred for a few seconds using a metallic spatula and left under
40 shaking for 15 min at room temperature, then was subjected to a decanting phase for 2 h (although
41 specific tests showed that even 30 minutes could enable an efficient decantation) at 4°C. After this
42 step, the chloroform layer was collected using a Pasteur pipette and stored at -20°C before being
43 analyzed. Subsequently, 200 µL of the chloroform-based extract were transferred into glass vials,
44 evaporated under a gentle stream of nitrogen and then re-dissolved in 200 µL of 2-propanol before
45
46
47
48
49
50
51
52
53
54

1
2
3 proceeding to DART-HRMS analysis. The last experimental procedure was adopted to minimize the
4
5 sample volume variability related to chloroform volatility.
6
7
8
9

10 **2.3 DART-HRMS analysis: instrumentation and operating conditions**

11
12 DART-HRMS analyses were performed using a DART ionization source SI-140-GIST (DART
13
14 Thermo Ion Max Vapor Interface, Ion Sense Inc., Saugus, MA, USA) mounted on an Exactive™
15
16 monostage Orbitrap™ High Resolution mass spectrometer (Thermo Fisher Scientific, San Jose, CA,
17
18 USA). A 2 µL aliquot of the lipid extract obtained from a salmon sample was placed on the metallic
19
20 grid of one of the open spot sample cards provided by the DART source manufacturer and left to
21
22 evaporate at 60°C for 5 min before introducing the card into the appropriate holder on the DART
23
24 source. Once the card was introduced, the sample was exposed for 1 min to a 3.2 L/min heated
25
26 helium stream subjected to a discharge generated on a needle kept at -6 kV. The operating conditions
27
28 of the DART source were the following: negative ion mode; helium flow heated at 150°C; grid
29
30 electrode voltage set to -350 V. The distance between the DART exit and the MS inlet was set at
31
32 5mm. The major settings for the Exactive™ mass spectrometer were as follows: mass scan range,
33
34 100-900 m/z; resolution, 50000 (FWHM at m/z 200); microscan number, 2; Automatic Gain Control
35
36 (AGC) Target, 3×10^6 ; maximum injection time (IT), 250 ms; capillary voltage, 30 V; tube lens
37
38 voltage, 65 V; capillary temperature, 250 °C. The spectrometer was periodically calibrated by direct
39
40 infusion-ESI-MS analysis of the negative ion calibrating solution provided by the manufacturer and a
41
42 mass accuracy usually better than 5 ppm was achieved. A DART-SVP controller (v. 4.0.x) was used
43
44 to set operating source parameters, whereas the software Xcalibur™ v. 2.1 (Thermo Fisher
45
46 Scientific, San Jose, CA, USA) was used to control the Exactive™ spectrometer and for a first
47
48 elaboration of DART-HRMS data.
49
50
51
52
53
54
55
56
57
58
59
60
61
62
63
64
65

1
2
3 It is worth noting that, to get the spectral background for subsequent subtraction, a blank card was
4 analyzed before each sample analysis and the relevant DART-HRMS spectrum was acquired for 30
5 s. Two replicated analyses were performed for each sample.
6
7
8
9
10

11 12 13 14 15 **2.4 Data processing and chemometric analysis**

16
17 The Xcalibur™ software was used in the first step of data processing, i.e. to average DART-HRMS
18 spectra obtained in the time range (1 min) corresponding to the exposure of each sample to the
19 DART gas beam. Afterwards, the spectral background obtained from a 30 s acquisition performed on
20 a blank card before each sample analysis (see section 2.3) was subtracted, using the same software.
21
22
23
24

25 The background-subtracted DART-HRMS spectra referred to the two replicates corresponding to
26 each of the 100 analyzed lipid extracts were averaged and then carefully processed to find the most
27 abundant and reproducible signals. In particular, the *mMass 5.5.0* software was used for data mining,
28 setting a relative abundance threshold equal to 0.5 %, since this level corresponded approximately to
29 ionic noise. The resulting list of accurate m/z ratios and intensities was then processed to select only
30 m/z ratios corresponding to the first isotopologues of the detected isotopic clusters. A comparison
31 between the lists of such ratios obtained for the different samples enabled the selection of the top 30
32 signals, in order of abundance, that were systematically detected in all the acquired spectra, both for
33 wild-type and for farmed salmon samples, although some relevant differences in the distribution of
34 their abundances were observed between the two sample types. The corresponding m/z values were
35 subsequently searched in the *LipidMaps* database (freely accessible at the Internet address
36 www.lipidmaps.org), setting a tolerance on m/z values matching of 0.005 units, consistent with the
37 accuracy typically obtained on the Exactive spectrometer. For each sample the intensity of each
38 selected signal was normalized to the sum of intensities referred to the 30 signals set, thus providing
39
40
41
42
43
44
45
46
47
48
49
50
51
52
53
54

1
2
3
4
5
6
7
8
9
10
11
12
13
14
15
16
17
18
19
20
21
22
23
24
25
26
27
28
29
30
31
32
33
34
35
36
37
38
39
40
41
42
43
44
45
46
47
48
49
50
51
52
53
54
55
56
57
58
59
60
61
62
63
64
65

values not affected by response fluctuations eventually occurring between different analyses and/or due to variations in the lipid extraction yield. Indeed, when the sums of intensities observed for the 30 selected signals were averaged, respectively, for the two types of salmon samples and the standard deviations were calculated, the following values were obtained: for wild-type $(1.4 \pm 0.8) \times 10^6$ counts/s and for farmed $(2.0 \pm 1.4) \times 10^6$ counts/s. The remarkable variations observed for absolute intensities made the choice of internally-normalized intensities inevitable, if a reliable comparison between the two salmon sample types was pursued.

Normalized intensity values obtained for the 30 selected signals from all the 100 samples were finally used as input values for a Principal Component Analysis based on the Nipals algorithm and performed using the *Statistica v.7* software (StatSoft Inc., now TIBCO Software Inc., Palo Alto, CA, USA). The same dataset, integrated by data obtained for 6 farmed Norwegian salmon samples purchased from local retailers, was also employed for Linear Discriminant Analysis (LDA), performed by *Statistica v.7* software.

3. Results and discussion

3.1 Comparison of DART-HRMS spectra obtained from farmed and wild type salmon lipid extracts

As shown in **Figure 1**, DART-HRMS spectra obtained for the lipid extracts of both wild-type and farmed salmons evidenced that the most intense signals (intended as those related to the major isotopologues of the detected isotopic clusters) were all odd-numbered and located in the m/z range 150-330. These features suggested that fatty acids, detected as $[M-H]^-$ ions, were dominating the spectra, as already observed during the analysis, based on the same instrumentation and operating conditions, of lipid extracts of salmons stored under refrigeration ^[35]. In particular, as emphasized in **Figure 1**, signals typically detected at m/z 281.2479 and 255.2323 (note that variations occurred on the fourth decimal figure of m/z ratios obtained from different analyses) were always the base peaks in DART-HRMS spectra referred to farmed and wild-type salmons, respectively. The subsequent search on the *LipidMaps* database clearly showed the two signals to be related to fatty acids with respective compositions 18:1 and 16:0. When the search was extended to the first 30 signals, in terms of relative abundance, common to all samples and then selected for the subsequent chemometric analysis, only FAs were found to correspond to their m/z values within a reasonable tolerance, as shown in **Table 1**. The compositions of saturated (14:0, 16:0 and 18:0) and unsaturated (16:1, 18:1, 18:2, 18:3, 20:5) fatty acids, whose presence in salmon muscles (either as free fatty acids or embedded into major lipids like phospholipids or triacylglycerols) is well known in the literature,^[37] were easily retrieved from the database search. It is worth noting that an investigation on the positions of C=C bonds and on the presence of eventual chain branching for the detected FA, eventually retrievable using tandem mass spectrometry or more complex analytical approaches, was beyond the goal of the present study. In accordance to that, only the overall chain compositions were reported in Table 1. As emphasized in the table, only half of the 30 species selected for chemometric analysis corresponded to unmodified FA. The remaining ones exhibited m/z values that could be

1
2
3 explained only by considering different types of chain oxidation, namely hydroxylation, epoxylation
4 and/or carbonylation. In many cases, due to the lack of further measurements, like MS/MS ones,
5 more than a single assignment could be made, yet the detection of so many oxidized species was a
6
7 very interesting result. Subsequent chemometric analysis showed that these species played a
8
9 remarkable role in determining the discrimination between wild-type and farmed salmons.
10
11
12
13

14 **3.2 Chemometric elaboration of the generated data**

15 **Principal Component Analysis (PCA)**

16
17 Principal Component Analysis (PCA) represents one of the most widespread **exploratory**
18
19 **chemometric tool used in the field of multivariate statistics, typically utilized to simplify and gain**
20
21 **better knowledge of a dataset, by removing redundancies and noise while retaining meaningful**
22
23 **information. PCA has been largely exploited,** in conjunction with DART-MS analysis, for the
24
25 assessment of food quality and authenticity ^[31,38-39]. In the present case, PCA was based on the
26
27 normalized intensity values of the 30 most abundant signals selected from the DART-HRMS spectra
28
29 obtained from the 100 salmon lipid extract samples, all corresponding to fatty acids, unmodified or
30
31 oxidized (see). As first step, PCA was performed only on Canadian salmons, since they represented
32
33 the only sub-set of samples in which farmed and wild-type salmons were obtained from the same
34
35 geographical area. As shown in **Figure 2**, the *scatterplot (score plot)* referred to the two first
36
37 principal components, accounting for ca. 77% of the total variance, showed a clear separation
38
39 between Canadian farmed and wild-type salmons along the first principal component.
40
41
42

43 Further interesting indications were obtained when PCA based on the 30 selected FA was extended
44
45 to the entire set of samples available, i.e., including also salmons farmed in Norway and Chile. As
46
47 shown by the scatterplot reported in **Figure 3**, still referred to the first two principal components (in
48
49 this case accounting for ca.74% of the total variance), the separation between farmed and wild-type
50
51 salmons along the first principal component persisted. Interestingly, the plot clearly indicated that
52
53
54
55
56
57
58
59
60
61
62
63
64
65

1
2
3 farmed salmons were not distinguishable, at least using the selected set of FA as variables, despite
4 that their geographical origin was very different.

5
6
7 The method based on DART-HRMS integrated by PCA proved then extremely powerful in the
8 discrimination between farmed and wild-type salmon, enabling its achievement through a much
9 faster approach, at least for the data accumulation stage, compared to other methods already
10 described in the literature.^[17] Indeed, one of the most common methods among the latter is based on
11 the combination between multielement isotopic analysis and determination of fatty acid composition,
12 with the latter obtained through transesterification and subsequent GC-MS analysis of lipid extracts,
13 which is certainly more complex and time-consuming than DART-HRMS. In other words, although
14 all the approaches reported so far, including the one described in the present paper, require a
15 relatively long time for the extraction of lipids from salmon samples, DART-HRMS is able to reduce
16 significantly the time required for analysis without loss of information.

17
18
19 Further useful insights could be obtained in the present case by considering the loading plots related
20 to the described PCA elaborations. Indeed, as shown in **Figure 4**, in which the loading plot
21 correlated to the scatterplot of **Figure 3** is reported, 14 out of the 30 FA selected as variables had a
22 clearly negative loading (lower than -0.6) on the first principal component, thus they were expected
23 to be more abundant in wild-type salmons. On the other hand, 12 FA exhibited a clearly positive
24 loading (higher than +0.5) on the first principal component, thus their amount was expected to be
25 higher in farmed salmons.

26
27
28 In particular, as suggested by a comparison between **Table 1** and **Figure 4**, saturated FA with
29 compositions 14:0, 16:0, 16:1, 18:0, along with mono- or bi-oxidized FA related to compositions
30 16:0, 16:1 and 18:0, and polyunsaturated FA with compositions 18:4, 20:4, 20:5, 22:5 and 22:6, thus
31 including also the important omega-3 FA EPA and DHA, were found to be most relevant in DART-
32 HRMS spectra referred to wild-type samples. On the other hand, FA with compositions 18:1, 18:2
33 and 18:3, accompanied by several of their possible oxidized forms, and those with compositions 20:2

1
2
3 and 20:3 were more relevant in farmed samples. Average values and standard deviations obtained for
4
5 normalized intensities observed for FA species in the two types of salmon samples, reported in the
6
7 two last columns of Table 1, clearly confirm the indications arising from the PCA loading plot.

8
9 These findings, at least with respect to non-oxidized FA (since, to the best of our knowledge, no data
10
11 have been reported so far for oxidized FA in salmons), are in excellent agreement with the
12
13 information already reported in the literature. Indeed, the higher incidence of saturated FA in the
14
15 muscles of wild-type salmons is well known^[12]. On the other hand, 18:2 and 18:3 FA have been
16
17 reported to be more abundant in farmed salmon, as the result of the increasing use of oils obtained
18
19 from the seeds of soy, flax and rape, rich in FA like 18:1, 18:2 and 18:3, in farmed salmons feeds^{[11,}
20
21 ^{11-12,17]}. Interestingly, while oxidized derivatives of unsaturated FA with 18 carbon atoms on the side
22
23 chain were found in the lipid extracts of farmed salmons, this was not the case for polyunsaturated
24
25 FA with 18 (18:4), 20 (20:4) and 22 (22:5 and 22:6) carbon atoms, found to be more relevant in
26
27 wild-type salmons, although such species are potentially susceptible of oxidation. This finding seems
28
29 to confirm the correlation between oxidative stress and specific aspects of fish aquaculture, which
30
31 has been often proposed in the literature (see Ref. 40 for a recent review on the topic). In particular,
32
33 pre-slaughter starvation, aimed at reducing the amount of feces in the intestine of fishes a few days
34
35 before collection, crowding, occurring just at the moment of collection, and several procedures
36
37 adopted for killing have been found to increase oxidative stress in farmed fishes.

38
39 As already discussed, the scatterplot based on the first two principal components (see Figure 3) was
40
41 unable to distinguish farmed salmons in terms of their geographical origin. A tri-dimensional
42
43 scatterplot, including also the third principal component, was then tentatively reproduced to search
44
45 for a distinction between farmed salmons based on that parameter. As shown in Figure 5, even
46
47 considering the third principal component, accounting for an additional 7.49% of variance, farmed
48
49 salmon samples arising from different countries could not be distinguished. This result, confirming
50
51 those reported both for farmed and for wild-type salmons in a previous study based on the
52
53
54
55
56
57
58
59
60
61
62
63
64
65

1
2
3 combination of multielement isotopic analysis and FA profiling^[17], suggest that the international
4 standardization of aquaculture practises adopted for salmon may level off the eventual differences, at
5 the FA level, due to the geographic location.
6

7
8
9 It is worth noting that only wild-type salmons captured in Canada could be taken into consideration
10 for DART-HRMS analysis in the present investigation. At least in principle, salmons captured in
11 other areas, like Norway, Chile, etc., could exhibit peculiar spectral features, different from those
12 shown by Canadian wild-type salmons and potentially impairing a neat discrimination from farmed
13 salmons. The accordance discussed before between the present study and previous ones, that
14 considered wild-type salmons of various origins, suggests this eventuality to be unlikely, yet a
15 specific investigation is ongoing in our laboratory to clarify this aspect.
16
17
18
19
20
21
22

23 In any case, due to the remarkable differences observed between farmed and wild-type salmons, as
24 displayed in the last two columns of Table 1, some markers can be suggested for a fast screening of
25 unknown salmon samples, namely to attribute them to one or the other class depending on the
26 specific normalised ion intensities recorded from the DART-HRMS spectrum. In particular, after
27 analysing values reported in Table 1, a sub-list of six ions, showing the most remarkable intensity
28 differences between the two salmon types and corresponding to compositions (in order of m/z ratio)
29 14:0, 16:0, 18:3, 18:2, 18:1 and 22:6, could be proposed for discrimination purposes. In order to
30 validate the approach, six salmon samples purchased from local retailers and claimed farmed of
31 Norway origin, were subjected to lipid extraction and DART-HRMS analysis in triplicate. In Table 2
32 average values and standard deviations of normalised DART-HRMS intensities retrieved, for each of
33 the six selected fatty acids, from such samples were compared with the corresponding values
34 obtained from the populations of wild-type and farmed salmons used for the PCA elaboration. As a
35 result, normalised intensities related to FA 14:0, 16:0, 18:3 and 18:1 in commercial salmons were
36 quite close to those typical of farmed salmons. Values obtained for FA 18:2 and 22:6 appeared to be
37 intermediate between those obtained for the two types of salmons, although they were closer to
38
39
40
41
42
43
44
45
46
47
48
49
50
51
52
53
54
55
56
57
58
59
60
61
62
63
64
65

1
2
3 values typical of farmed salmons. It is worth noting that these findings might have been influenced,
4 at least partially, by the effect of thermal history on the profile of FA detected by DART-HRMS.
5
6 Indeed, the six commercial salmon samples were reasonably subjected to a longer refrigeration
7 (during transportation and then storage before purchase) than those provided in the context of the
8
9 *Food Integrity* project. On the other hand, they were not subjected to freezing and storage at -20°C,
10
11 i.e., the treatment systematically adopted for the latter samples. Nonetheless, the comparative
12
13 evaluation described in Table 2 appeared to confirm the recognition of the six commercial samples
14
15 as farmed salmons. This issue was further investigated using Discriminant Analysis.
16
17
18
19
20

21 **Discriminant Analysis (DA)**

22
23 DA is a frequently used supervised pattern recognition method and it has been applied to food-
24
25 related data for a long time^[41]. In the present case, Linear Discriminant Analysis (LDA) was
26
27 exploited to verify the classification of wild-type and farmed salmon samples, with the latter
28
29 including also the six commercial samples described in the previous section. The elaboration was
30
31 performed using the *Statistica v. 7* software, with normalized DART-HRMS intensities referred to
32
33 the 30 ions previously selected as features for PCA adopted as variables. As additional input
34
35 features, the *General Discriminant Analysis* option was chosen, with the *all effects DA* selected as
36
37 classification method. As a result, one discriminant function obtained from LDA (*Root 1*), whose
38
39 values for each of the samples in the dataset are represented graphically in Figure 6, led to a clear
40
41 classification of salmons as wild-type or farmed ones, accounting for 99,38% of variance explained
42
43 (Wilk's lambda: 0.0127; χ^2 : 362.52; df: 30). Interestingly, the 6 commercial salmon samples
44
45 (labelled as "unknown" in Figure 6) were also classified among the latter (prediction ability =
46
47 100%). Nonetheless, in accordance with the results reported in Table 2, the corresponding values of
48
49 the discriminant function were slightly different from those obtained from non-commercial farmed
50
51 samples (see Figure 6).
52
53
54
55
56
57
58
59
60
61
62
63
64
65

1
2
3
4
5
6
7
8
9
10
11
12
13
14
15
16
17
18
19
20
21
22
23
24
25
26
27
28
29
30
31
32
33
34
35
36
37
38
39
40
41
42
43
44
45
46
47
48
49
50
51
52
53
54
55
56
57
58
59
60
61
62
63
64
65

Conclusions

The profiling of the 30 major fatty acids in salmon lipid extracts, rapidly provided by DART-HRMS and then integrated by data elaboration based on Principal Component Analysis (PCA), enabled a faster discrimination, compared to previously reported approaches, between Canadian wild-type salmons and farmed salmons from Canada, Chile and Norway. In agreement with the results already reported in the literature, but arising from more complex analytical approaches, saturated FA and polyunsaturated FA with 20 or 22 carbon atoms on their side chain, including the omega-3 species EPA and DHA, were found to be more abundant in wild-type salmons, whereas unsaturated FA like 18:1, 18:2 and 18:3 and several oxidized derivatives of the latter appeared to be more relevant in farmed salmons. A careful evaluation of the normalized spectral abundance of these FA by DART-HRMS was then suggested as an easy **and targeted MS-based approach to be used for discriminating the two types of salmons (wild type versus farmed). Finally, Discriminant Analysis (DA) was exploited to validate the approach and six commercial samples, added to the original set of samples, were correctly classified as farmed salmons with a rate of 100%.**

Interestingly, in spite of the presence of several potentially oxidizable polyunsaturated FA in wild-type salmons, no evidence was obtained for the occurrence of the corresponding oxidized derivatives in the lipid extracts of this type of sample. This result corroborates, on a molecular basis, the hypothesis, made in several previous studies, that aquaculture may induce a relevant oxidative stress in fishes. Lastly, the farming-related features described so far were comparable for salmons farmed in very distant countries, thus suggesting that internationally consolidated aquaculture practices can influence the profile of major FA in salmons much more than geographical origin.

1
2
3
4
5
6
7
8
9
10
11
12
13
14
15
16
17
18
19
20
21
22
23
24
25
26
27
28
29
30
31
32
33
34
35
36
37
38
39
40
41
42
43
44
45
46
47
48
49
50
51
52
53
54
55
56
57
58
59
60
61
62
63
64
65

Acknowledgement

The present research has received funding from the European Union’s Seventh Framework Programme for research, technological development and demonstration, under grant agreement No. 613688 2 “Food Integrity”. The equipment used in this work was funded by project BioNet – PTP – “BIODIVERSITA’ PER LA VALORIZZAZIONE E SICUREZZA DELLE PRODUZIONI ALIMENTARI TIPICHE PUGLIESI (codice n. 73, PO Regione Puglia FESR 377 2000-2006)”.
Dr. Rosa Pilolli is kindly acknowledged for her support in the statistical analysis.

1
2
3 **References**
4
5

- 6 [1] C. Blanchet, M. Lucas, P. Julien, R. Morin, S. Gingras., E. Dewailly. Fatty acid composition of
7 wild and farmed Atlantic salmon (*Salmo salar*) and rainbow trout (*Oncorhynchus*
8 *mykiss*). *Lipids* **2005**, *40*, 529.
9
10
11
12 [2] M.C. Hamilton, R.A. Hites, S.J. Schwager, J.A. Foran, B.A. Knuth, D.O. Carpenter. Lipid
13 composition and contaminants in farmed and wild salmon. *Environ. Sci. Technol.* **2005**, *39*,
14 8622.
15
16
17
18
19 [3] M. Sprague, J. R. Dick, D. R. Tocher. Impact of sustainable feeds on omega-3 long-chain fatty
20 acid levels in farmed Atlantic salmon, 2006–2015. *Sci. Rep.-UK* **2016**, *6*, 21892.
21
22
23
24 [4] P.J.H. Jones, T. Rideout. *Lipids, sterols, and their metabolites*. In: Ross AC, Caballero B,
25 Cousins RJ, Tucker KL, Ziegler TR, eds. *Modern Nutrition in Health and Disease*. 11th ed.
26 Baltimore, MD: Lippincott Williams & Wilkins; **2014**.
27
28
29
30 [5] E.J. Baker, E.A. Miles, G.C. Burdge, P. Yaqoob, P.C. Calder. Metabolism and functional
31 effects of plant-derived omega-3 fatty acids in humans. *Prog. Lipid Res.* **2016**, *64*, 30.
32
33
34
35
36 [6] Institute of Medicine, Food and Nutrition Board. *Dietary reference intakes for energy,*
37 *carbohydrate, fiber, fat, fatty acids, cholesterol, protein, and amino acids (macronutrients)*.
38 Washington, DC: National Academy Press; **2005**.
39
40
41
42 [7] P.J.H. Jones, A.A. Papamandjaris. *Lipids: cellular metabolism*. In: Erdman JW, Macdonald IA,
43 Zeisel SH, eds. *Present Knowledge in Nutrition*. 10th ed. Washington, DC: Wiley-Blackwell;
44 **2012**.
45
46
47
48
49
50
51
52
53
54
55
56
57
58
59
60
61
62
63
64
65

- 1
2
3 [8] W.S. Harris. *Omega-3 fatty acids*. In: Coates PM, Betz JM, Blackman MR, et al., eds.
4 Encyclopedia of Dietary Supplements. 2nd ed. London and New York: Informa Healthcare;
5
6 **2010**.
- 7
8
9
10 [9] EFSA Panel on Dietetic Products, Nutrition, and Allergies (NDA); Scientific Opinion on
11 Dietary Reference Values for fats, including saturated fatty acids,
12 polyunsaturated fatty acids, monounsaturated fatty acids, trans fatty acids, and cholesterol,
13
14 **2014**.
- 15
16
17
18 [10] J. Perk, G. De Backer, H. Gohlke, I. Graham, Z. Reiner, M. Verschuren, C. Albus, P. Benlian,
19 G. Boysen, R. Cifkova, C. Deaton, S. Ebrahim, M. Fisher, G. Germano, R. Hobbs,
20 A. Hoes, S. Karadeniz, A. Mezzani, E. Prescott, L. Ryden, M. Scherer, M. Syväne, W.J.
21 Scholte Op Reimer, C. Vrints, D. Wood, J.L. Zamorano, F. Zannad. European Guidelines on
22 cardiovascular disease prevention in clinical practice (version 2012): The Fifth Joint Task
23 Force of the European Society of Cardiology and Other Societies on Cardiovascular Disease
24 Prevention in Clinical Practice. *Eur. Heart J.* **2012**, *33*, 1635.
- 25
26
27
28
29
30
31
32
33 [11] J. G.Bell, D. R. Tocher, R. J. Henderson, J. R. Dick, V. O. Crampton. Altered fatty acid
34 compositions in Atlantic salmon (*Salmo salar*) fed diets containing linseed and rapeseed oils
35 can be partially restored by a subsequent fish oil finishing diet. *J. Nutr.* **2003**, *133*, 2793.
- 36
37
38
39
40 [12] C. Cahu, P. Salen, M. de Lorgeril. Farmed and wild fish in the prevention of cardiovascular
41 diseases: Assessing possible differences in lipid nutritional values. *Nutr. Metab. Cardiovasc.*
42 *Dis.* **2004**, *14*, 34.
- 43
44
45
46
47 [13] M. Sprague, J. Walton, P. J. Campbell, F. Strachan, J. R. Dick, J. G. Bell. Replacement of fish
48 oil with a DHA-rich algal meal derived from *Schizochytrium* sp. on the fatty acid and
49
50
51
52
53
54
55
56
57
58
59
60
61
62
63
64
65

- 1
2
3 persistent organic pollutant levels in diets and flesh of Atlantic salmon (*Salmo salar*, L.) post-
4 smolts. *Food Chem.* **2015**, *185*, 413.
- 5
6
7 [14] A. K. Lundebye, E. J. Lock, J. D. Rasinger, O. J. Nøstbakken, R. Hannisdal, E. Karlsbakk, V.
8 Wennevik, A. S. Madhun, L. Madsen, I.E. Graff, R. Ørnsrud. Lower levels of persistent
9 organic pollutants, metals and the marine omega 3-fatty acid DHA in farmed compared to wild
10 Atlantic salmon (*Salmo salar*). *Environ. Res.* **2017**, *155*, 49.
- 11
12
13 [15] K. Kappel, U. Schröder. Substitution of high-priced fish with low-priced species: adulteration
14 of common sole in German restaurants. *Food Control* **2016**, *59*, 478.
- 15
16
17 [16] E. Cline. Marketplace substitution of Atlantic salmon for Pacific salmon in Washington State
18 detected by DNA barcoding. *Food Res. Int.* **2012**, *45*, 388.
- 19
20
21 [17] F. Thomas, E. Jamin, K. Wietzerbin, R. Guérin, M. Lees, E. Morvan, I. Billault, S. Derrien,
22 J.M.M. Rojas, F. Serra, C. Guillou, M. Aursand, L. McEvoy, A. Prael, R.J. Robins.
23 Determination of origin of Atlantic salmon (*Salmo salar*): The use of multiprobe and
24 multielement isotopic analyses in combination with fatty acid composition to assess wild or
25 farmed origin. *J. Agr. Food Chem.* **2008**, *56*, 989.
- 26
27
28 [18] Council Regulation (EEC) No. 104/2000 on the common organization of the markets in fishery
29 and aquaculture products.
- 30
31
32 [19] H. H. Grundy, S. D. Kelly, A. J. Charlton, J. A. Donarski, S. J. Hird, M. J. Collins. Food
33 authenticity and food fraud research: achievements and emerging issues. *J. Assoc. Public Anal.*
34 **2012**, *40*, 65.
- 35
36
37 [20] S. Charlebois, B. Sterling, S. Haratifar, S. K. Naing. Comparison of global food traceability
38 regulations and requirements. *Compr. Rev. Food Sci. F.* **2014**, *13*, 1104.
- 39
40
41
42
43
44
45
46
47
48
49
50
51
52
53
54
55
56
57
58
59
60
61
62
63
64
65

- 1
2
3 [21] Regulation (EU) No 1169/2011 of the European Parliament and of the Council of 25 October
4 2011 on the provision of food information to consumers
5
6
7 [22] Regulation (EU) No 1379/2013 of the European Parliament and of the Council of 11 December
8 2013 on the common organization of the markets in fishery and aquaculture products.
9
10
11
12 [23] J.H. Cheng, D.W. Sun, X.A. Zeng, D. Liu. Recent Advances in Methods and Techniques for
13 Freshness Quality Determination and Evaluation of Fish and Fish Fillets: A Review. *Crit. Rev.*
14 *Food Sci.* **2015**, 55, 1012.
15
16
17
18
19 [24] A. Farag El Sheikha, D. Montet. How to Determine the Geographical Origin of Seafood? *Crit.*
20 *Rev. Food Sci.* **2016**, 56, 306.
21
22
23
24 [25] C. De Battisti, S. Marciano, C. Magnabosco, S. Busato, G. Arcangeli, G. Cattoli.
25 Pyrosequencing as a tool for rapid fish species identification and commercial fraud
26 detection. *J. Agr. Food Chem.* **2013**, 62, 198.
27
28
29
30
31 [26] D. Liu, X. A. Zeng, D. W. Sun. NIR spectroscopy and imaging techniques for evaluation of
32 fish quality-a review. *Appl. Spectrosc. Rev.* **2013**, 48, 609.
33
34
35
36 [27] G. Downey, *Advances in food authenticity testing*, 2nd ed., Duxford, UK: Woudhead
37 Publishing; **2016**.
38
39
40
41 [28] E. Cubero-Leon, R. Peñalver, A. Maquet. Review on metabolomics for food
42 authentication. *Food Res. Int.* **2014**, 60, 95.
43
44
45 [29] M.F. Mazzeo, R.A. Siciliano. Proteomics for the authentication of fish species.*J.*
46 *Proteom.***2016**, 147, 119.
47
48
49
50 [30] I.S. Arvanitoyannis, *Authenticity of Foods of Animal Origin*, Boca Raton, FL: CRC Press;
51 **2016**
52
53
54
55
56
57
58
59
60
61
62
63
64
65

- 1
2
3 [31] L. Vaclavik, T. Cajka, V. Hrbek, J. Hajslova. Ambient mass spectrometry employing direct
4 analysis in real time (DART) ion source for olive oil quality and authenticity assessment. *Anal.*
5 *Chim. Acta* **2009**, *645*, 56.
6
7
8
9
10 [32] J.H. Gross. Direct analysis in real time-a critical review on DART-MS. *Anal. Bioanal.*
11 *Chem.* **2014**, *406*, 63.
12
13
14 [33] L. Vaclavik, V. Hrbek, T. Cajka, B. A. Rohlik, P. Pipek, J. Hajslova. Authentication of animal
15 fats using direct analysis in real time (DART) ionization - mass spectrometry and chemometric
16 tools. *J. Agr. Food Chem.* **2011**, *59*, 5919.
17
18
19
20
21 [34] T. Cajka, H. Danhelova, A. Vavrecka, K. Riddellova, V. Kocourek, F. Vacha, J. Hajslova.
22 Evaluation of direct analysis in real time ionization–mass spectrometry (DART–MS) in fish
23 metabolomics aimed to assess the response to dietary supplementation. *Talanta* **2013**, *115*,
24 263.
25
26
27
28
29
30 [35] G.M. Fiorino, E. De Angelis, I. Losito, A. F. Logrieco, L. Monaci. Direct Analysis in Real
31 Time coupled to High Resolution Mass Spectrometry as a potential tool to assess salmon
32 (Salmo salar) freshness. *J. Mass Spectrom* **2018**, in press.
33
34
35
36
37 [36] E.G. Bligh, W.J. Dyer. A rapid method of total lipid extraction and purification. *Can. J.*
38 *Biochem. Phys.* **1959**, *37*, 911.
39
40
41
42 [37] H.H. Refsgaard, P.M. Brockhoff, B. Jensen. Free polyunsaturated fatty acids cause taste
43 deterioration of salmon during frozen storage. *J Agr. Food Chem.* **2000**, *48*, 3280.
44
45
46
47 [38] T. Guo, W. Yong, Y. Jin, L. Zhang, J. Liu, S. Wang, Q. Chen, Y. Dong, H. Su, T. Tan.
48 Applications of DART-MS for food quality and safety assurance in food supply chain. *Mass*
49 *Spectrom. Rev.* **2017**, *36*, 161.
50
51
52
53
54
55
56
57
58
59
60
61
62
63
64
65

1
2
3
4
5
6
7
8
9
10
11
12
13
14
15
16
17
18
19
20
21
22
23
24
25
26
27
28
29
30
31
32
33
34
35
36
37
38
39
40
41
42
43
44
45
46
47
48
49
50
51
52
53
54
55
56
57
58
59
60
61
62
63
64
65

[39] V. Hrbek, L. Vaclavik, O. Elich, J. Hajslova. Authentication of milk and milk-based foods by direct analysis in real time ionization–high resolution mass spectrometry (DART–HRMS) technique: A critical assessment. *Food Control* **2014**, *36*, 138.

[40] G. Secci, G. Parisi. From farm to fork: lipid oxidation in fish products. A review. *Ital. J. Anim. Sci.* **2016**, *15*, 124.

[41] L.A. Berrueta, R.M. Alonso-Salces, K. Héberger. Supervised pattern recognition in food analysis, *J. Chrom. A*, **2007**, *1158*, 196.

1
2
3 **Captions to figures**
4

5 **Figure 1.** Representative DART-HRMS negative ion spectra obtained for the fillet lipid extracts of
6 farmed (A) and wild-type (B) salmons. See Table 1 for the compositional assignments given to the
7
8
9
10 30 most abundant signals generated from FA after a search on the *LipidMaps* database.
11

12
13
14
15 **Figure 2.** *Scatterplot* obtained for the first two principal components after applying PCA to
16
17 normalized intensities retrieved for the 30 most abundant signals generated from FA after the DART-
18
19 HRMS analysis of fillet lipid extracts of 26 wild-type (triangles) and 25 farmed (diamonds) Canadian
20
21 salmons. See Table 1 for a list of the selected fatty acids.
22
23
24
25

26
27 **Figure 3.** *Scatterplot* obtained for the first two principal components after applying PCA to
28
29 normalized intensities retrieved for the 30 most abundant signals generated from FA after the DART-
30
31 HRMS analysis of fillet lipid extracts of: 26 Canadian wild-type (black squares) and 25 Canadian
32
33 (red diamonds), 25 Norwegian (green triangles) and 24 Chilean (purple circles) farmed salmons. See
34
35 Table 1 for a list of the selected fatty acids.
36
37
38
39

40 **Figure 4.** *Loading* plot referred to the first two principal components obtained after applying PCA to
41
42 normalized intensities retrieved for the 30 most abundant signals generated from FA after the DART-
43
44 HRMS analysis of fillet lipid extracts of: 26 Canadian wild-type and 25 Canadian, 25 Norwegian and
45
46 24 Chilean farmed salmons. Numeric labels indicated for each point correspond to the numbers
47
48 adopted to distinguish fatty acid compositions in Table 1.
49
50
51
52
53
54

1
2
3
4
5
6
7
8
9
10
11
12
13
14
15
16
17
18
19
20
21
22
23
24
25
26
27
28
29
30
31
32
33
34
35
36
37
38
39
40
41
42
43
44
45
46
47
48
49
50
51
52
53
54
55
56
57
58
59
60
61
62
63
64
65

Figure 5. Scatterplot obtained for the first three principal components after applying PCA to normalized intensities retrieved for the 30 most abundant signals generated from FA after the DART-HRMS analysis of fillet lipid extracts of: 26 Canadian wild-type (black squares) and 25 Canadian (red diamonds), 25 Norwegian (green triangles) and 24 Chilean (purple circles) farmed salmons. See Table 1 for a list of the selected fatty acids.

Figure 6. Graphical representation of the values of *Root 1* obtained after applying Linear Discriminant Analysis to DART-HRMS normalized intensity data referred to wild-type (blue circles) and farmed salmons (orange circles) previously adopted for PCA elaboration. The analysis was further enlarged to include additional 6 commercial salmons claimed as farmed in Norway (grey circles).

1
2
3
4
5
6
7
8
9
10
11
12
13
14
15
16
17
18
19
20
21
22
23
24
25
26
27
28
29
30
31
32
33
34
35
36
37
38
39
40
41
42
43
44
45
46
47
48
49
50
51
52
53
54
55
56
57
58
59
60
61
62
63
64
65

Figure 1. Representative DART-HRMS negative ion spectra obtained for the fillet lipid extracts of farmed (A) and wild-type (B) salmon. See Table 1 for the compositional assignments given to the 30 most abundant species (fatty acids) after a search on the *LipidMaps* database.

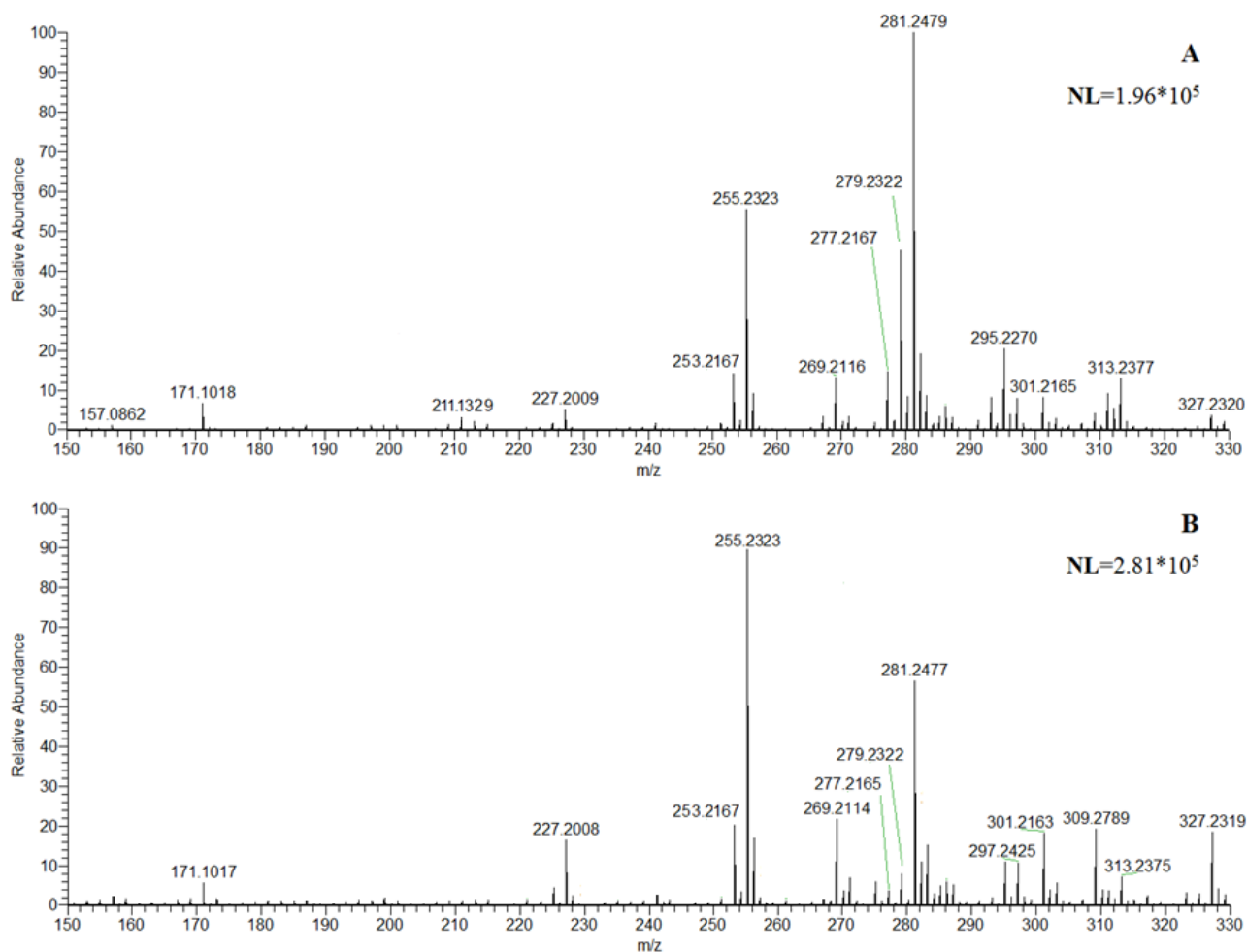


Figure 2. Scatterplot obtained for the first two principal components after applying PCA to normalized intensities retrieved for 30 selected fatty acids after the DART-HRMS analysis of fillet lipid extracts of 26 wild-type (triangles) and 25 farmed (diamonds) Canadian salmon. See Table 1 for a list of the selected fatty acids.

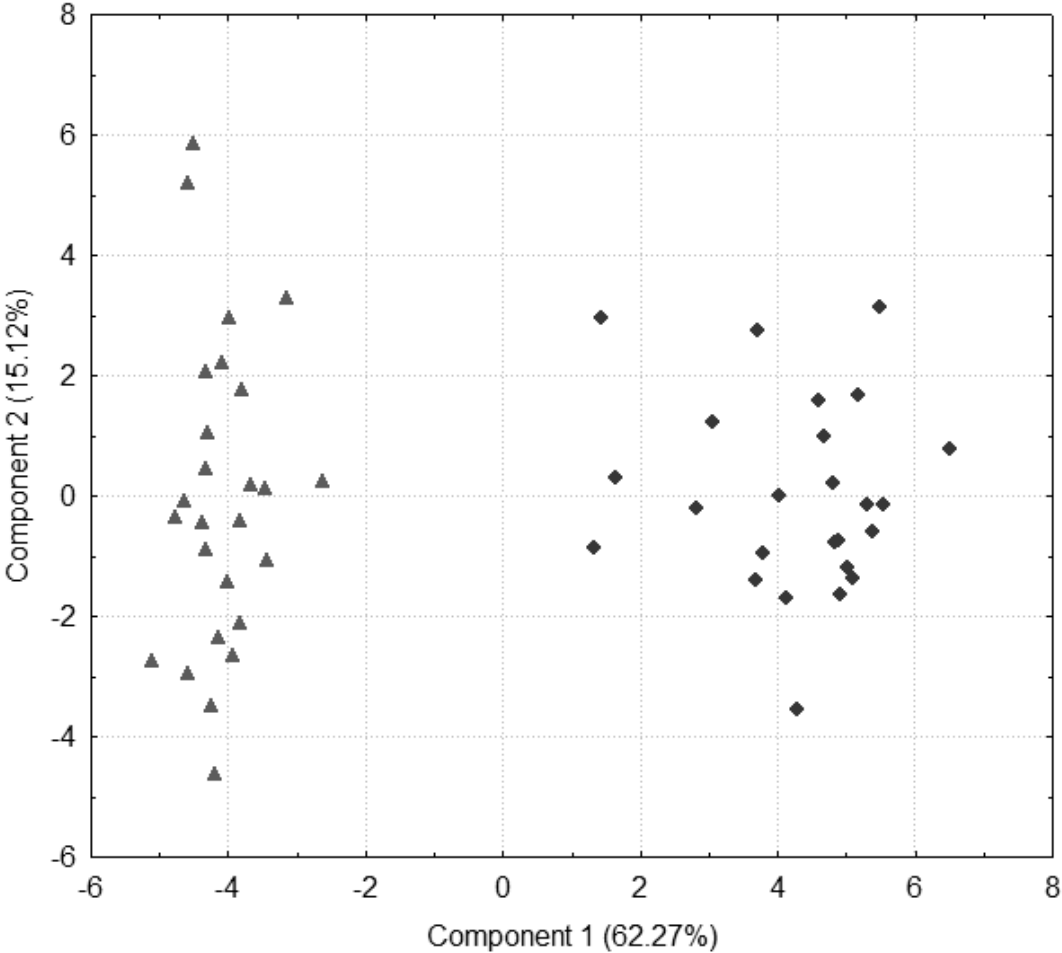


Figure 3. Scatterplot obtained for the first two principal components after applying PCA to normalized intensities retrieved for 30 selected fatty acids after the DART-HRMS analysis of fillet lipid extracts of: 26 Canadian wild-type (black squares) and 25 Canadian (red diamonds), 25 Norwegian (green triangles) and 24 Chilean (purple circles) farmed salmon. See Table 1 for a list of the selected fatty acids.

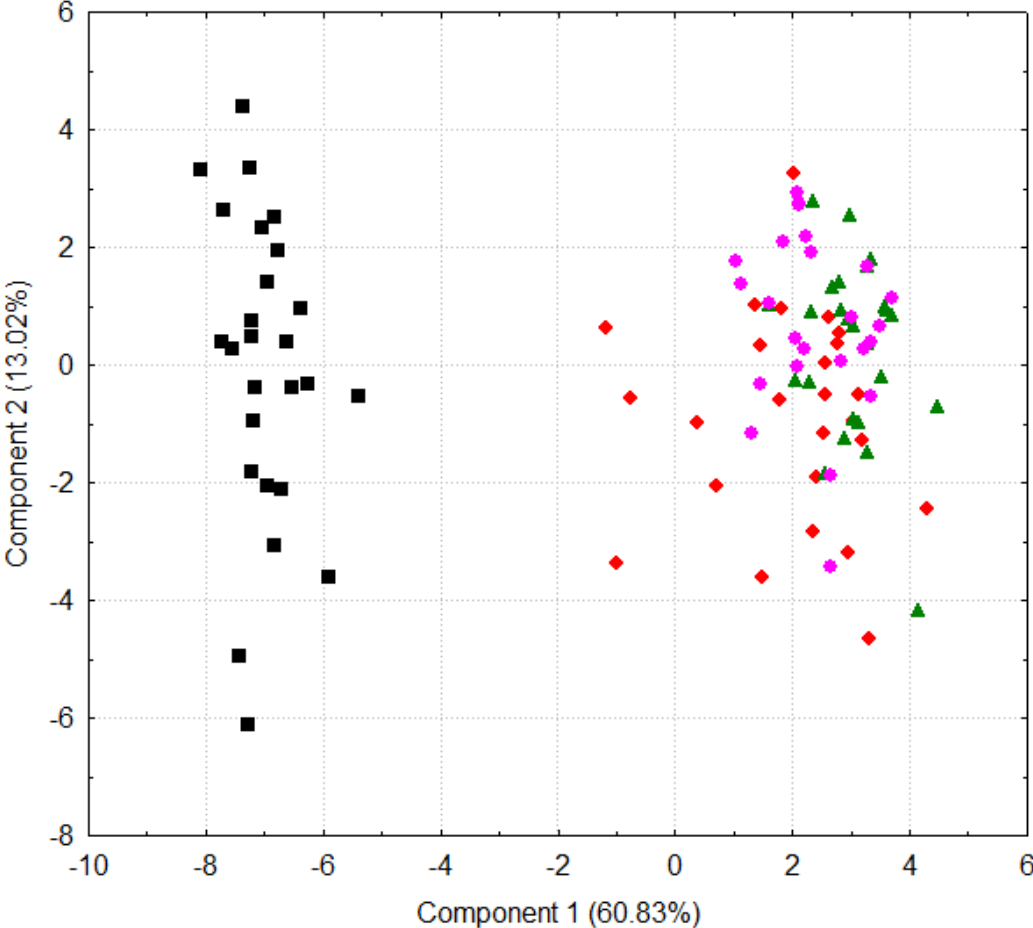
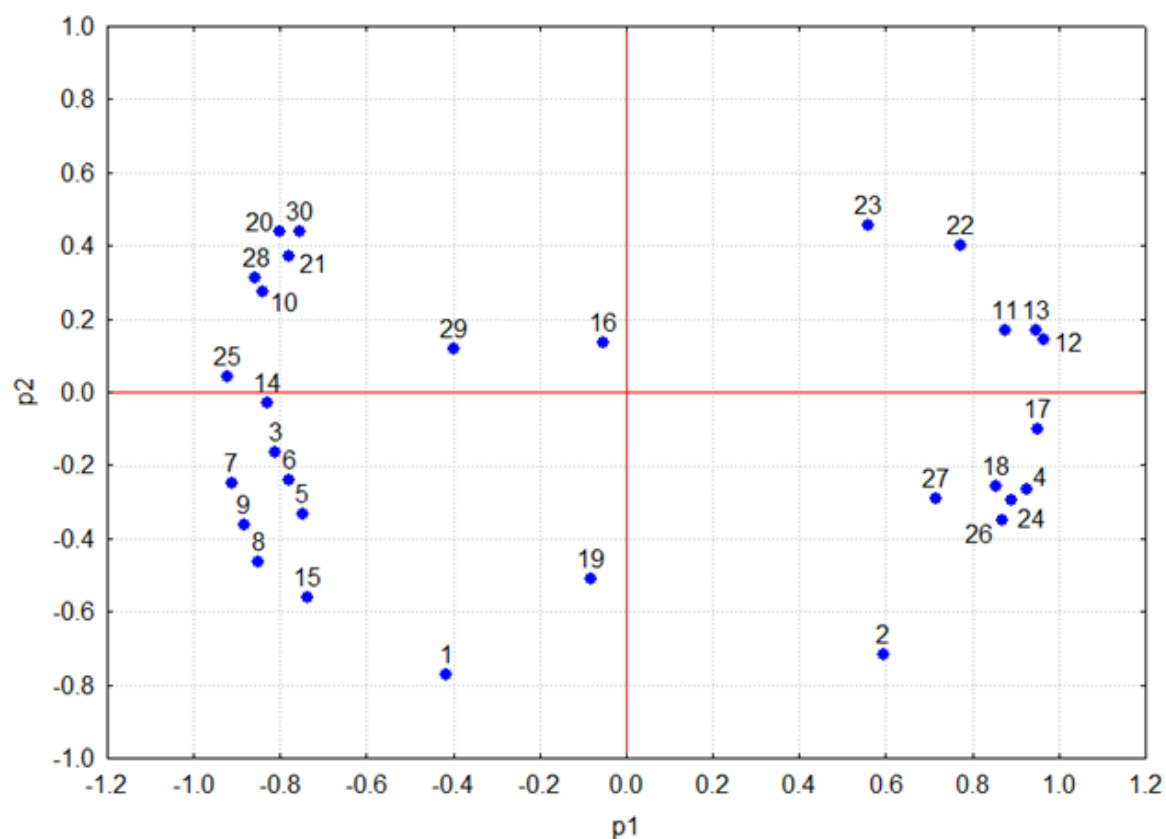


Figure 4. Loading plot referred to the first two principal components obtained after applying PCA to normalized intensities retrieved for 30 selected fatty acids after the DART-HRMS analysis of fillet lipid extracts of: 26 Canadian wild-type and 25 Canadian, 25 Norwegian and 24 Chilean farmed salmons. Numeric labels indicated for each point correspond to the numbers adopted to distinguish fatty acid compositions in Table 1.



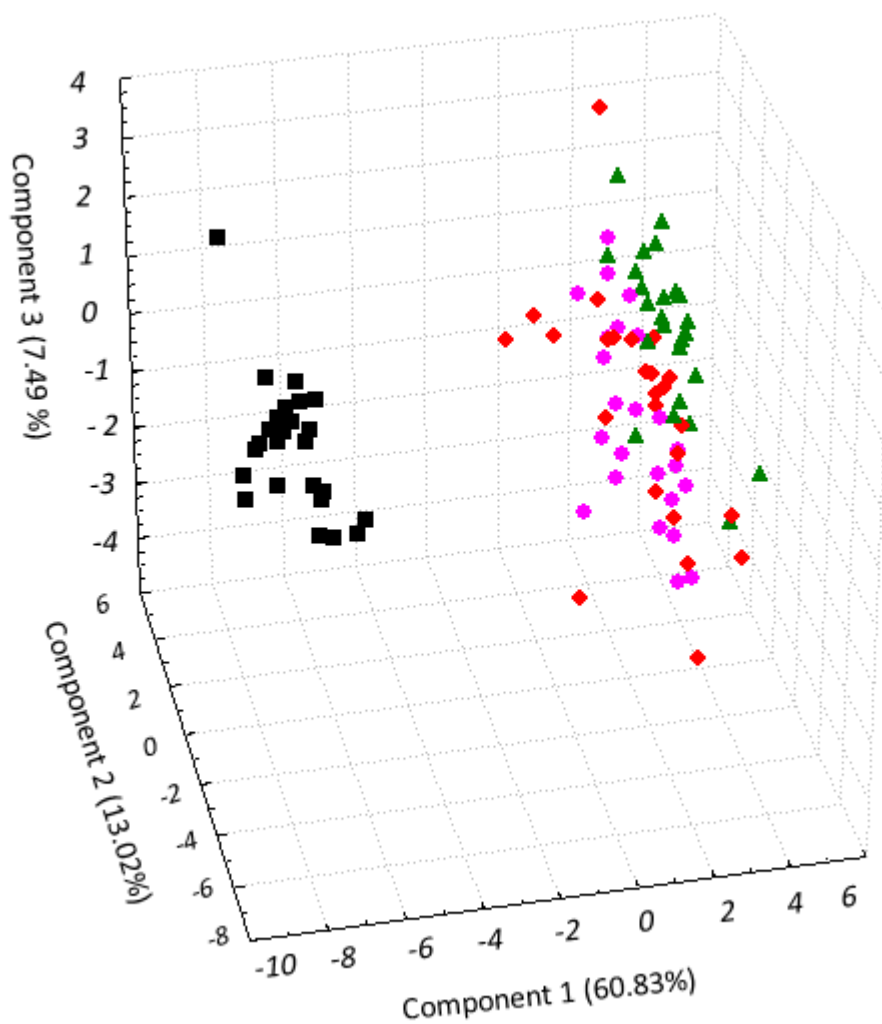


Figure 5. Scatterplot obtained for the first three principal components after applying PCA to normalized intensities retrieved for 30 selected fatty acids after the DART-HRMS analysis of fillet lipid extracts of: 26 Canadian wild-type (black squares) and 25 Canadian (red diamonds), 25 Norwegian (green triangles) and 24 Chilean (purple circles) farmed salmon. See Table 1 for a list of the selected fatty acids.

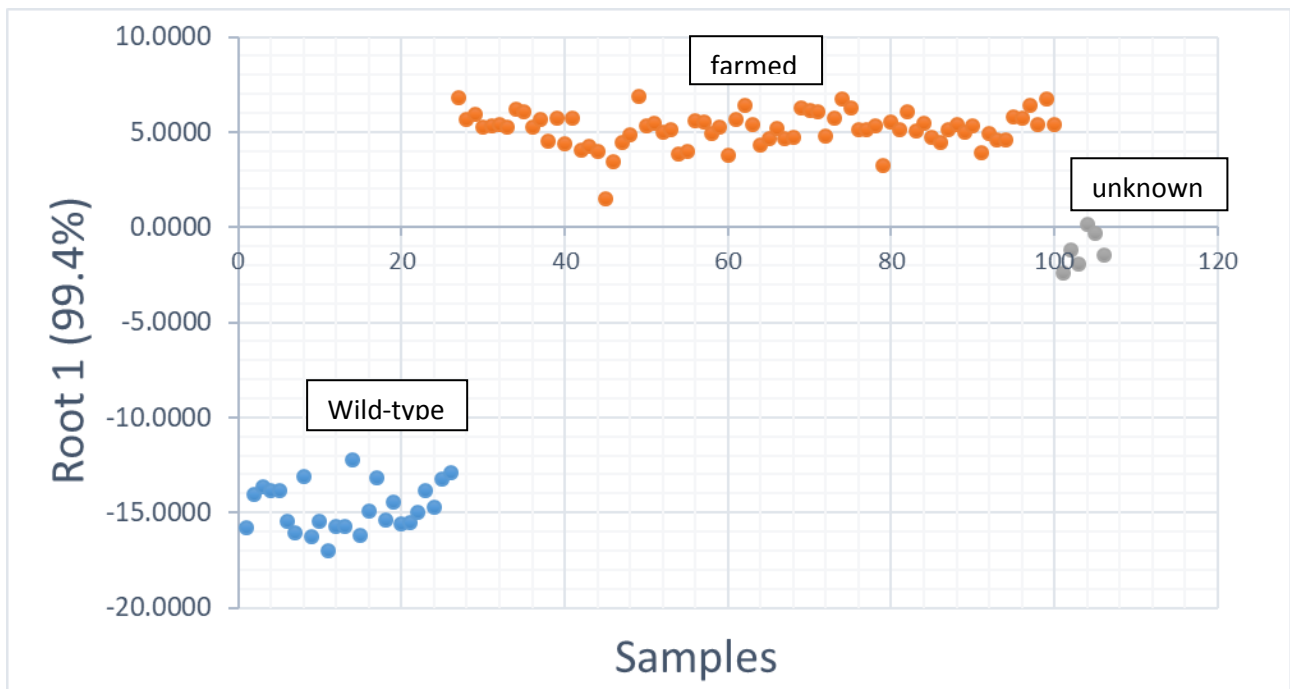


Figure 6. Graphical representation of the values of *Root 1* obtained after applying Linear Discriminant Analysis to DART-HRMS normalized intensity data referred to wild-type (blue circles) and farmed salmon (orange circles) previously adopted for PCA elaboration. The analysis was further enlarged to include additional 6 commercial salmon claimed as farmed in Norway (grey circles).

Table 1. Summary of MS-related data, chemical formulas and possible chain compositions inferred for the 30 fatty acids that were considered for the discrimination between wild-type and farmed salmons during the present study. In the last two columns average values and standard deviations referred to normalized abundances observed for each fatty acid in the 26 wild-type and the 74 farmed salmons are reported.

#	Average Experimental m/z	Theoretical m/z	Chemical formula	Mass accuracy (ppm)	Chain composition(s)	Wild type	Farmed
1	157.0862	157.0870	C ₈ H ₁₃ O ₃	-5.09	Hydroxy-8:1 Oxo-8:0	0.45 ± 0.16	0.35 ± 0.11
2	171.1018	171.1027	C ₉ H ₁₅ O ₃	-5.26	Hydroxy-9:1 Oxo-9:0	1.10 ± 0.30	1.67 ± 0.37
3	181.0860	181.0870	C ₁₀ H ₁₃ O ₃	-5.52	Oxo-10:2	0.50 ± 0.09	0.21 ± 0.07
4	211.1329	211.1340	C ₁₂ H ₁₉ O ₃	-5.21	Hydroxy-12:2 Oxo-12:1	0.17 ± 0.03	0.44 ± 0.07
5	227.2008	227.2017	C ₁₄ H ₂₇ O ₂	-3.96	14:0	4.09 ± 1.61	1.80 ± 0.91
6	253.2167	253.2173	C ₁₆ H ₂₉ O ₂	-2.36	16:1	5.40 ± 0.82	3.97 ± 1.09
7	255.2323	255.2330	C ₁₆ H ₃₁ O ₂	-2.74	16:0	25.37 ± 3.13	15.04 ± 2.67
8	269.2116	269.2122	C ₁₆ H ₂₉ O ₃	-2.23	Hydroxy-16:1 Oxo-16:0	5.22 ± 0.88	3.04 ± 0.77
9	271.2271	271.2279	C ₁₆ H ₃₁ O ₃	-2.95	Hydroxy-16:0	1.59 ± 0.32	0.75 ± 0.15
10	275.2006	275.2017	C ₁₈ H ₂₇ O ₂	-3.99	18:4	1.86 ± 0.57	0.57 ± 0.13
11	277.2167	277.2173	C ₁₈ H ₂₉ O ₂	-2.16	18:3	1.13 ± 0.17	3.76 ± 0.68
12	279.2322	279.2330	C ₁₈ H ₃₁ O ₂	-2.86	18:2	2.08 ± 0.22	11.82 ± 1.39
13	281.2479	281.2486	C ₁₈ H ₃₃ O ₂	-2.49	18:1	15.64 ± 2.10	27.85 ± 2.52
14	283.2633	283.2643	C ₁₈ H ₃₅ O ₂	-3.18	18:0	3.86 ± 0.36	2.63 ± 0.39
15	285.2066	285.2071	C ₁₆ H ₂₉ O ₄	-1.75	Hydroxy, oxo -16:0	1.17 ± 0.23	0.81 ± 0.30
16	287.2222	287.2228	C ₁₆ H ₃₁ O ₄	-2.09	Dihydroxy-16:0	1.27 ± 0.15	1.87 ± 5.18
17	293.2114	293.2122	C ₁₈ H ₂₉ O ₃	-2.73	Hydroxy-18:3 Epoxy-18:2 Oxo-18:2	0.46 ± 0.04	1.85 ± 0.30
18	295.2270	295.2279	C ₁₈ H ₃₁ O ₃	-3.04	Hydroxy-18:2 Epoxy-18:1 Oxo-18:1	2.64 ± 0.34	4.82 ± 0.70
19	297.2425	297.2435	C ₁₈ H ₃₃ O ₃	-3.36	Hydroxy- 18:1 Epoxy-18:0 Oxo-18:0	2.17 ± 0.40	2.07 ± 0.47
20	301.2165	301.2173	C ₂₀ H ₂₉ O ₂	-2.66	20:5	5.87 ± 1.56	3.18 ± 0.68

21	303.2315	303.2330	C ₂₀ H ₃₁ O ₂	-4.95	20:4	1.67 ± 0.37	1.08 ± 0.23
22	305.2483	305.2486	C ₂₀ H ₃₃ O ₂	-0.98	20:3	0.24 ± 0.06	0.40 ± 0.08
23	307.2636	307.2643	C ₂₀ H ₃₅ O ₂	-2.28	20:2	0.43 ± 0.10	0.52 ± 0.10
24	309.2063	309.2071	C ₁₈ H ₂₉ O ₄	-2.59	Oxo,epoxy-18:1 Hydroxy, epoxy-18:2 Hydroperoxy-18:3	0.32 ± 0.03	0.88 ± 0.19
25	309.2789	309.2799	C ₂₀ H ₃₇ O ₂	-3.23	20:1	4.97 ± 1.29	1.16 ± 0.70
26	311.2219	311.2228	C ₁₈ H ₃₁ O ₄	-2.89	Hydroxy,epoxy-18:1 Hydroxy,oxo-18:1 Dihydroxy-18:2 Hydroperoxy-18:2	0.75 ± 0.13	2.05 ± 0.37
27	313.2375	313.2384	C ₁₈ H ₃₃ O ₄	-2.87	Hydroxy,epoxy-18:0 Dihydroxy-18:1 Hydroperoxy-18:1	1.72 ± 0.31	3.07 ± 0.44
28	327.2320	327.2330	C ₂₂ H ₃₁ O ₂	-3.06	22:6	5.27 ± 1.90	1.51 ± 0.34
29	329.2317	329.2334	C ₁₈ H ₃₃ O ₅	-5.16	Trihydroxy-18:1	1.86 ± 2.68	0.52 ± 0.10
30	329.2477	329.2486	C ₂₂ H ₃₃ O ₂	-2.73	22:5	0.74 ± 0.22	0.33 ± 0.08

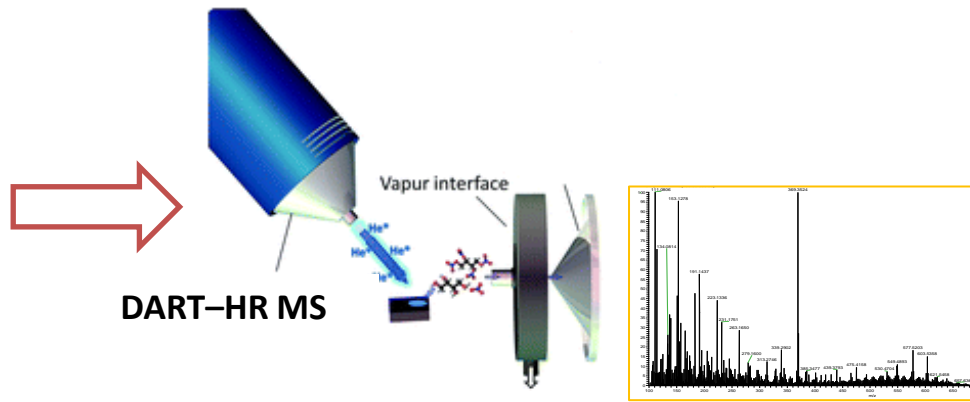
Table 2. Average values and standard deviations referred to normalized DART-HRMS intensities obtained for the 6 fatty acids exhibiting the most relevant differences in terms of average values when comparing Canadian wild-type salmons with farmed salmons collected in Canada, Chile and Norway. **In the last six columns average values and standard deviations (n = 3) referred to normalized intensities obtained for the same fatty acids in the lipid extracts of six salmon samples (NRW F 1X-NRW F 6X) purchased in local**

Average Experimental m/z	Chain composition(s)	Wild type	Farmed	NRW F 1X	NRW F 2X	NRW F 3X	NRW F 4X	NRW F 5X	NRW F 6X
227.2008	14:0	4.09 ± 1.61	1.80 ± 0.91	0.82 ± 0.17	0.90 ± 0.24	0.84 ± 0.19	0.97 ± 0.25	0.96 ± 0.15	1.10 ± 0.21
255.2323	16:0	25.37 ± 3.13	15.04 ± 2.67	12.69 ± 1.09	13.57 ± 2.31	13.27 ± 1.56	11.43 ± 2.03	11.37 ± 1.74	15.98 ± 1.92
277.2167	18:3	1.13 ± 0.17	3.76 ± 0.68	3.00 ± 0.11	3.00 ± 0.29	3.06 ± 0.18	2.87 ± 0.24	3.26 ± 0.16	2.68 ± 0.22
279.2322	18:2	2.08 ± 0.22	11.82 ± 1.39	7.56 ± 0.23	7.96 ± 0.55	7.68 ± 0.34	7.28 ± 0.41	8.04 ± 0.52	6.96 ± 0.26
281.2479	18:1	15.64 ± 2.10	27.65 ± 2.52	25.35 ± 0.56	25.71 ± 2.35	25.49 ± 1.83	24.73 ± 0.98	28.00 ± 2.27	23.30 ± 1.39
327.2320	22:6	5.27 ± 1.90	1.51 ± 0.34	2.96 ± 0.23	2.70 ± 0.72	2.90 ± 0.65	3.21 ± 0.43	3.38 ± 0.52	1.94 ± 0.55

markets and claimed as farmed in Norway are reported.

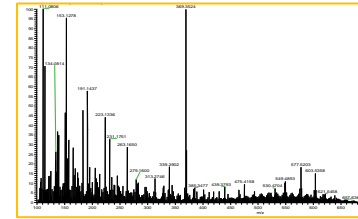


salmons



DART-HR MS

Vapur interface



Statistical analysis

Farmed



Wild type

