

Multimodal and multiscale non-invasive study of Leonardo's Mural Painting in *Sala delle Asse* (Milan): a tool supporting cleaning evaluation

Alessandra Botteon^{1*}, Claudia Conti¹, Chiara Colombo¹, Maria Catrambone¹, Marco Realini¹, Costanza Miliani², Sotiria Kogou³, Sammy Cheung³, Haida Liang³, Francesca Tasso⁴, Michela Palazzo⁵, and Antonio Sansonetti¹

¹ *Institute of Heritage Science, National Research Council (CNR ISPC), Via R. Cozzi 53, 20125 Milan, Italy*

² *Institute of Heritage Science, National Research Council (CNR ISPC), Via Card. G. Sanfelice, 8, 80134, Naples, Italy*

³ *ISAAC Laboratory, School of Science and Technology, Nottingham Trent University, Nottingham, NG11 8NS UK*

⁴ *Comune di Milano, Musei del Castello Sforzesco, Archeologici e Museo del Risorgimento, Comune di Milano, Piazza Duomo 14, 20122, Milano, Italy*

⁵ *Direzione Regionale Musei Nazionali Lombardia, Ministero della Cultura, Corso Magenta 24, 20123, Milano, Italy*

*Corresponding author: alessandra.botteon@cnr.it

SUPPLEMENTARY MATERIAL

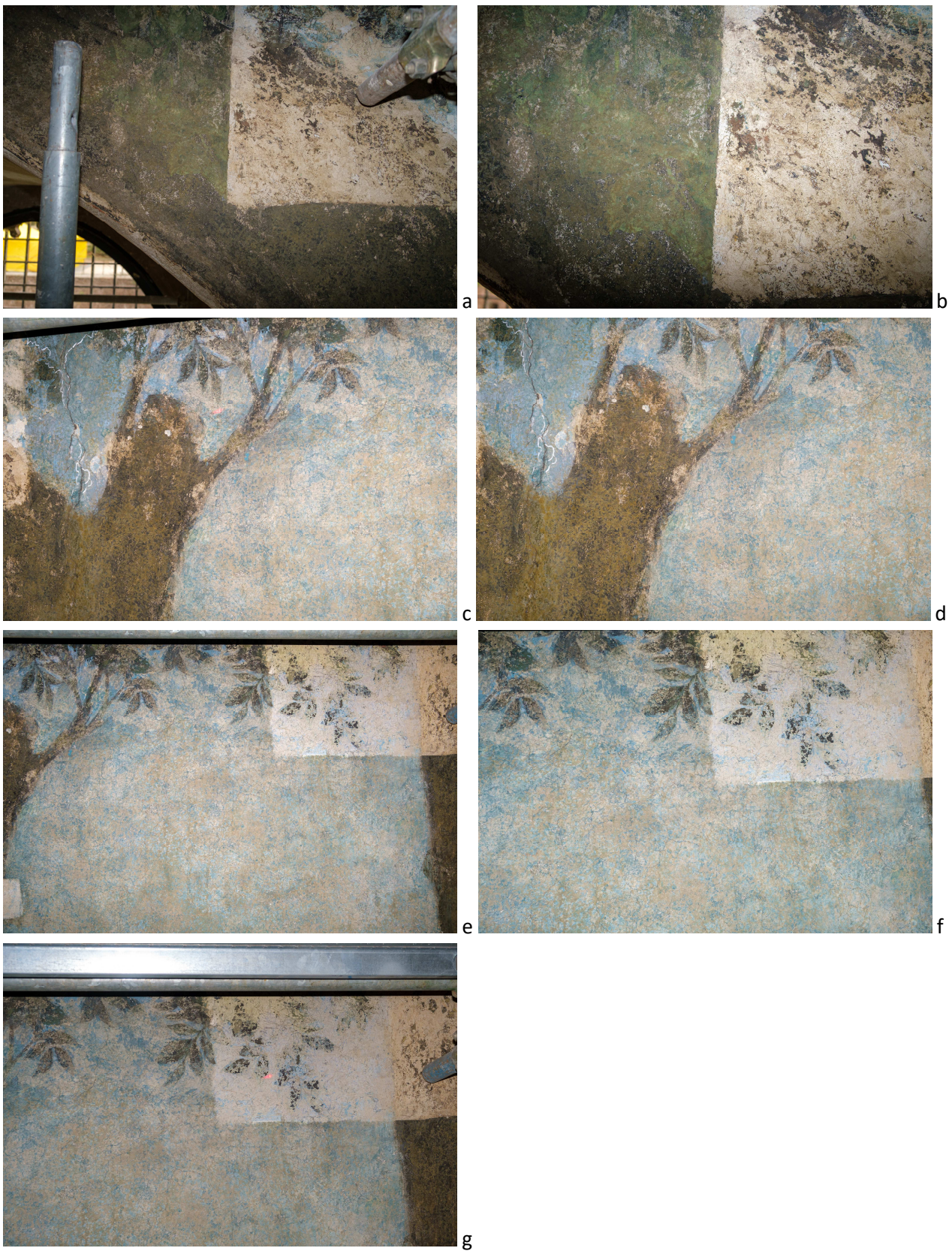


Figure S1: (a-g) Images of the northwest wall of the Sala delle Asse, used to create the digital reconstruction of the analyzed area shown in Fig. 1b