

Consiglio Nazionale delle Ricerche

Ideal-ist Project

Statistical Report on Ideal-ist web visits over 2001

Alfredo Ceccarelli, Roberto Gagliardi

Silvana Muscella, Barbara Ranieri

Technical Report

CNUCE B4-2002-008

Pisa, February 2002

CNUCE

Pisa

Ideal-ist Project

Statistical Report on Ideal-ist web visits over 2001

*Alfredo Ceccarelli (CNUCE – Institute of the National Research
Council - CNR)*

*Roberto Gagliardi (CNUCE – Institute of the National Research
Council - CNR)*

Silvana Muscella (CPR – Consorzio Pisa Ricerche)

*Barbara Ranieri (MURST - Ministry of University of the Scientific
and Technological Research)*

Technical Report

CNUCE B4-2002-008

Pisa, February 2002

Table of Contents

1.- Introduction	2
2.- General Summary	3
3.- Monthly Report	4
4.- Daily Summary	5
5.- Domain Report	6
6.- Directory Report	7
7.- Request Report	8
8.- Conclusions.....	10

1.- Introduction

This document is the statistical report which analyses the complete web visits to Ideal-ist web pages www.ideal-ist.net. This document will look at the general summary. It will also look at the accesses on a daily, hourly basis with emphasis placed on focus on a monthly basis.

This document will also look at accesses via domains subdivided into countries.

A directory report is taken into consideration viewing what the users actually access on the web site subdivided into important links.

Finally a request report analysis listing the number of requests users wish for from the server.

It is important to highlight that this report covers a period of time corresponding to the Fifth, Sixth and Seventh Calls call with deadlines on the 15th January 2001, 25th April 2001 and 17th October 2001 of the 5th Framework of IST Programme.

This report has been produced by using Analog 3.31/Unix. Analog is a program which analyses logfiles from WWW servers. It works on almost any operating system. It is designed to be fast and to produce attractive statistics. It's free software and it can downloaded at the following address <http://www.analog.cx> web site.

2.- General Summary

The General Summary report gives summary statistics, such as the total number of requests of each type. The general table below shows some indication of the average server activity carried out in 7 days see parenthesis figure. There has been a substantial amount of traffic generated per day with an elevated level of 17,157 Kbytes.

Figure in parentheses refer to the 7 days to 31-Oct-2001 23:59.

Successful requests	719,982 (11,741)
Average successful requests per day	1,972 (1,677)
Successful requests for pages	700,782 (11,140)
Average successful requests for pages per day	1,920 (1,591)
Failed requests	36,063 (262)
Redirected requests	4,766 (95)
Distinct files requested	2,114 (977)
Distinct hosts served	37,563 (1,164)
Corrupt log file lines	37
Unwanted log file entries	3,035,253
Data transferred	6,115 Mbytes (68,764 Kbytes)
Average data transferred per day	17,157 Kbytes (9,823 Kbytes)

3.- Monthly Report

The Monthly Report is known as time report; it lists the activity in each month.

Nov 2000: 25476: 25316:	-----
Dec 2000: 26824: 26574:	-----
Jan 2001: 33769: 33508:	-----
Feb 2001: 56088: 55125	-----
Mar 2001: 83806: 82376:	-----
Apr 2001: 75341: 74649:	-----
May 2001: 50942: 50123:	-----
Jun 2001: 55331: 54409:	-----
Jul 2001: 69972: 67301:	-----
Aug 2001: 77042: 73946:	-----
Sep 2001: 93481: 89296:	-----
Oct 2001: 71910: 68159:	-----

Busiest month: Sep 2001 (89,296 requests for pages).

Each unit (-) represents 2,500 requests for pages, or part thereof.

The monthly report clearly indicates an increase in access to the server around the time of any published call. In this case the 5th, 6th and 7th call with deadlines on the 15th January 2001, 25th April 2001 and 17th October 2001 consecutively demonstrate a greater interest in accessing the server during these periods.

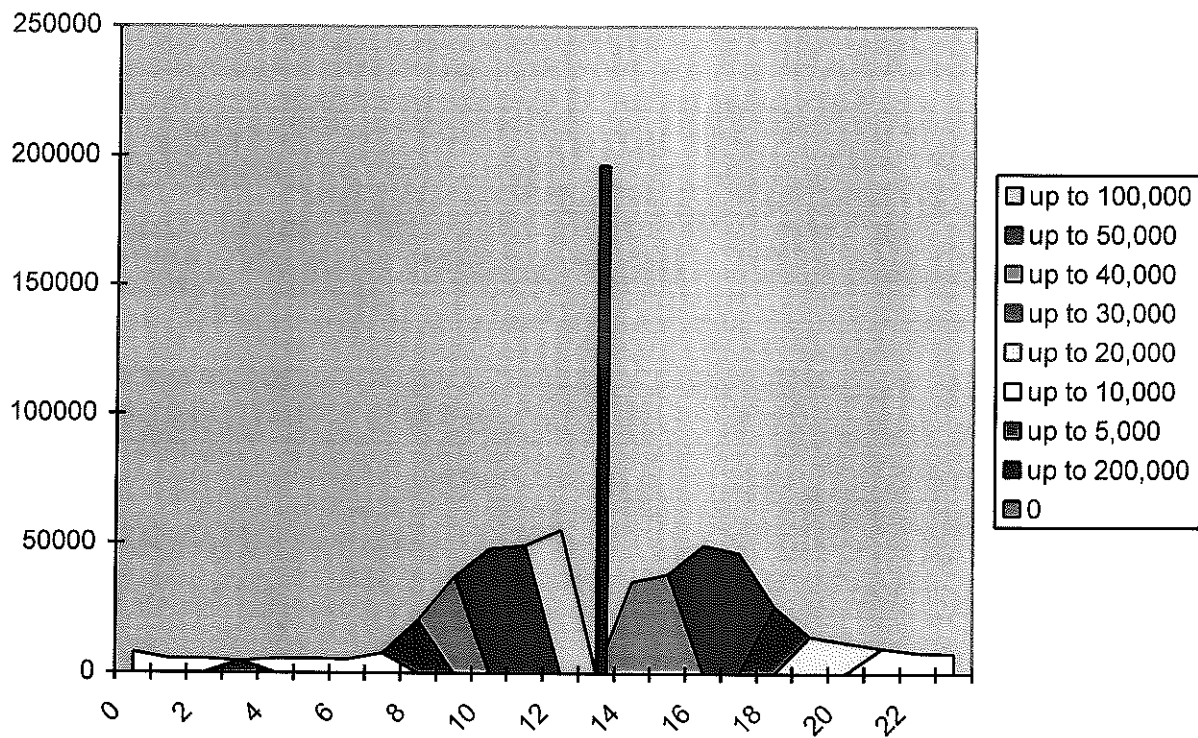
4.- Daily Summary

This report is also known as time report and it lists the total activity for each day of the week, summed over all the weeks in the report.

Sun: 45640: 44806	-----
Mon: 129129: 125214	-----
Tue: 127610: 123967	-----
Wed: 127171: 123314	-----
Thu: 122563: 119455	-----
Fri: 119693: 116660	-----
Sat: 48176: 47366	-----

Each unit (-) represents 3,000 requests for pages, or part thereof.

This summary of requests for pages on a weekly basis clearly shows a distinct increase of requests carried out early on in the week with a reduction from Friday through to the weekend where there is less request for information.

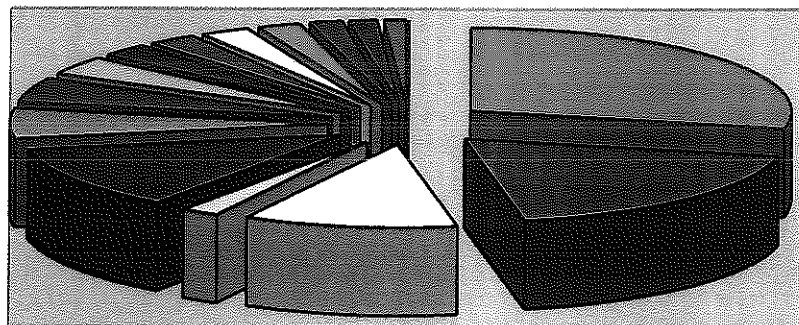


The diagram above shows the degree of interest and access throughout a 24 hour day. Peak access takes place around lunch time with a steady ongoing access rate during office hours. Significant decrease is relevant during the early hours of the morning and late at night.

5.- Domain Report

This report lists the countries of the computers which requested files. The following diagram displays the highest percentage bytes of listed domains, sorted by the amount of traffic. An interesting observation from the statistical analysis has been that not only all the countries as well as Associated Member States have accessed the server, the countries which accessed with less than 1% are considered in the "Other" category but are nonetheless there. What is also interesting to see is that the server can boast a significant interest from other countries including: Hong Kong, Thailand, the U.S.A, Australia, Singapore and India.

Listing Domains sorted by amount of traffic

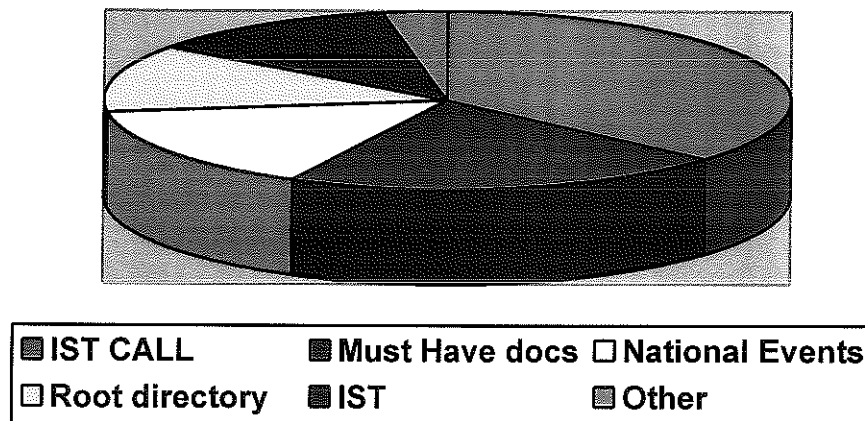


■ Unresolved numerical address	■ Italy	□ Ideal-ist Server
□ Webmanager	■ Commercial	■ DE
■ Network	■ ES	■ PL
■ FR	□ GR	■ CH
■ CZ	■ UK	■ BE
■ Other		

6.- Directory Report

The Directory Report and Request Report show what files people got from server. This category lists the directories with at least 0,01% of traffic sorted by the amounts of traffic. From the pie chart below the most accessed directory is the IST Call, where users are able to download all the relative and appropriate information needed in order to submit a project proposal. Finding the appropriate

Listing Directories with at least 0,01% of traffic sorted by the amount of traffic



documents via Cordis takes up significant time, via Ideal-ist accessing these same documents is a quick and easy method. The second most accessed directory is "the must have docs" link. This page offers important information to users in selected areas of interest. They are:

- ISTAG brochure - Scenarios for Ambient Intelligence in 2010
- SEIG - Strategy for Exploitation Improvement Guidelines tailored to SMEs
- IST handbook
- Information on Cultural Heritage Applications
- Workshops

An interesting feature of a search engine has been included which searches for keywords in related fields of IST programme.

The third most accessed link are the National events where users can find out what is going on internationally such as conferences, workshops and other related IST events as well as establishing what is going on in their own country such as Information Days and workshop or brokerage events.

7.- Request Report

When we refer to a request report it records how many times somebody requests a file from the server. The following analysis shows how many users wish to find out about their NCP, Italy's NCP was accessed 855 times and Malta was accessed 276 times throughout the reporting period. It is possible that the page would contain some images, which are considered under separate graphical browsers, in which case the image would mean another request.

All the request listed in the first column show the effective downloads of that specific page.

requests	% bytes	files
855	0.04 %	/NCP/ITALY.html
842	0.04 %	/NCP/SPAIN.html
812	0.02 %	/NCP/GERMANY.html
623	0.02 %	/NCP/AUSTRIA.html
608	0.03 %	/NCP/UNITEDKINGDOM.html
516	0.01 %	/NCP/FRANCE.html
496	0.02 %	/NCP/GREECE.html
482	0.01 %	/NCP/SWITZERLAND.html
456	0.01 %	/NCP/BELGIUM.html
443	0.01 %	/NCP/POLAND.html
414	0.02 %	/NCP/PORTUGAL.html
410	0.01 %	/NCP/DENMARK.html
406	0.01 %	/NCP/SWEDEN.html
406	0.02 %	/NCP/ISRAEL.html
404	0.01 %	/NCP/IRELAND.html
393	0.01 %	/NCP/CZECH_REPUBLIC.html
364	0.01 %	/NCP/NETHERLANDS.html
351	0.01 %	/NCP/ROMANIA.html
345	0.01 %	/NCP/FINLAND.html
339	0.01 %	/NCP/HUNGARY.html
337	0.01 %	/NCP/ICELAND.html
324	0.01 %	/NCP/LUXEMBOURG.html
313	0.01 %	/NCP/BULGARIA.html
312	0.01 %	/NCP/LATVIA.html
308	0.01 %	/NCP/CYPRUS.html
292	0.01 %	/NCP/SLOVAKIA.html
288	0.01 %	/NCP/LITHUANIA.html
285	0.01 %	/NCP/SLOVENIA.html
279	0.01 %	/NCP/NORWAY.html
279	0.01 %	/NCP/ESTONIA.html
276	0.01 %	/NCP/MALTA.html
961	0.02 %	/IST/touchNCP.html
812	0.01 %	/IST/touchNCP.htm
Total 15031		

requests	% bytes	files
32152	0.14 %	/
28032	0.94 %	/menu.html
28015	1.72 %	/main.html
18700	2.74 %	/psIST.html
2227	0.05 %	/search.html
109126		

requests	% bytes	files
3551	0.28 %	/partner.htm
3214	0.23 %	/partner.html
2871	0.73 %	/programme.htm
2528	0.52 %	/events.htm
2265	0.49 %	/programme.html
3005	0.37 %	/musthavedocs/lista.htm
1524	0.23 %	/events.html
18958		

These are accesses to various pages on the server.

requests	% bytes	files
2118	0.09 %	/psISTdoc/psform.htm
1471	0.03 %	/psISTdoc/psform/procedura.html
1198	0.05 %	/psISTdoc/infopack/IST_FORM.html
918	0.02 %	/psISTdoc/psstrategy.html
470	0.08 %	/psISTdoc/infopack/Guide.rtf
6175		

This analysis shows the requests for completing the partner search form and the requirements

8.- Conclusions

To conclude, this analysis manages to give an accurate indication of all the elements of the server which are used, which links are the most accessed and a breakdown analysis on a monthly, hourly and day basis. The study serves as a learning point for those managing the server in understanding the users' needs and serving to improve the service and quality of the contents especially in those areas which are accessed the most.

It is also suffice to say that there is relevant international interest from those indirectly involved in Ideal-ist and it is positive to view that accesses from far and wide have been recorded. The latter will be on the increase more and more in the future as Idealist continues to disseminate and promote its activities.

In short, Ideal-ist is renowned for its partner search mechanism and ability of finding international and specific project partners for consortia, from this analysis, however from the server access statistics we can also appreciate that users access the server to receive other, just as vital, information too.