

# Tracing Volatiles, Halogens, and Chalcophile Metals during Melt Evolution at the Tolbachik Monogenetic Field, Kamchatka

Alexander A. Iveson<sup>1,\*</sup>, Madeleine C.S. Humphreys<sup>1</sup>, Frances E. Jenner<sup>2</sup>, Barbara E. Kunz<sup>2</sup>, Ivan P. Savov<sup>3,4</sup>, Jan C.M. De Hoog<sup>5</sup>, Tatiana G. Churikova<sup>6,7</sup>, Boris N. Gordeychik<sup>6,7,8</sup>, Samantha J. Hammond<sup>2</sup>, Pavel Yu. Plechov<sup>9</sup>, Jon Blundy<sup>10</sup> and Samuele Agostini<sup>4</sup>

<sup>1</sup>Department of Earth Sciences, Science Site, Durham University, Durham DH1 3LE, UK

<sup>2</sup>School of Environment, Earth and Ecosystem Sciences, Open University, Walton Hall, Milton Keynes MK7 6AA, UK

<sup>3</sup>Institute of Geophysics and Tectonics, School of Earth and Environment, University of Leeds, Woodhouse Lane, Leeds LS2 9JT, UK

<sup>4</sup>Istituto di Geoscienze e Georisorse, Consiglio Nazionale delle Ricerche, Via Moruzzi, 1, 56124 Pisa, Italy

<sup>5</sup>Grant Institute, School of GeoSciences, University of Edinburgh, West Mains Road, Edinburgh EH9 3JW, UK

<sup>6</sup>Institute of Volcanology and Seismology FED RAS, Piip Avenue 9, Petropavlovsk-Kamchatsky 683006, Russia

<sup>7</sup>GZG, Abt. Geochemie, Universität Göttingen, 37077 Göttingen, Germany

<sup>8</sup>Institute of Experimental Mineralogy RAS, Academica Osypkina ul., 4, Chernogolovka 142432, Russia

<sup>9</sup>Department of Geology, Lomonosov Moscow State University, 1 Leninskie Gory, 119992 Moscow, Russia

<sup>10</sup>Department of Earth Sciences, University of Oxford, South Parks Road, Oxford OX1 3AN, UK

\*Corresponding author. E-mail: alexander.a.iveson@durham.ac.uk

## Abstract

Melt storage and supply beneath arc volcanoes may be distributed between a central stratovolcano and wider fields of monogenetic cones, indicating complex shallow plumbing systems. However, the impact of such spatially variable magma storage conditions on volatile degassing and trace element geochemistry is unclear. This study explores magma generation and storage processes beneath the Tolbachik volcanic field, Kamchatka, Russia, in order to investigate the evolution of the magmatic volatile phase and, specifically, the strong enrichment of chalcophile metals (in particular, Cu) in this system. We present new geochemical data for a large suite of olivine- and clinopyroxene-hosted melt inclusions (and host phenocrysts) from five separate monogenetic cones within the Tolbachik volcanic field. These high-Al composition magmas likely reflect the homogenised fractionation products of primitive intermediate-Mg melt compositions, stored at shallow depths after significant fractional crystallisation. Boron isotope compositions and incompatible trace element ratios of the melt inclusions suggest a deeper plumbing system that is dominated by extensive fractional crystallisation and fed by melts derived from an isotopically homogeneous parental magma composition. Volatile components (H<sub>2</sub>O, CO<sub>2</sub>, S, Cl, F) show that magmas feeding different monogenetic cones had variable initial volatile contents and subsequently experienced different fluid-saturated storage conditions and degassing histories. We also show that melts supplying the Tolbachik volcanic field are strongly enriched in Cu compared with almost all other Kamchatka rocks, including samples from the Tolbachik central stratocones, and other volcanoes situated in close proximity in the Central Kamchatka Depression. The melt inclusions record Cu concentrations  $\geq 450 \mu\text{g/g}$  at ca. 4–5 wt.% MgO, which can only be explained by bulk incompatible partitioning behaviour of Cu, i.e. evolution under sulphide-undersaturated conditions. We suggest that initial mantle melting in this region exhausted mantle sulphides, leading to sulphide undersaturated primitive melts. This sulphide-free model for the high-Al cone melts is further supported by S/Se and Cu/Ag values that overlap those of the primitive mantle and MORB array, with bulk rock Cu/Ag ratios also overlapping other with other global arc datasets for magma evolution prior to fractionation of a monosulfide solid solution. We therefore demonstrate that the combination of novel chalcophile metal analyses with trace element, isotopic, and volatile data is a powerful tool for deciphering complex magmatic evolution conditions across the entire volcanic field.

**Keywords:** olivine, melt inclusion, chalcophile, halogen

## INTRODUCTION

The processes of magma generation, migration, and closed- vs open-system storage and evolution beneath large monogenetic cone fields are being continually refined (e.g. Smith & Németh, 2017). Geochemical trends recorded by some monogenetic eruptions within the same volcanic field are commonly interpreted to result from the evolution of a single injection of parental magma. Conversely, other more complex compositional variations have been shown to result from the mixing of temporally related but

chemically discrete magma sources (e.g. Brenna *et al.*, 2011). The complexity of monogenetic basaltic eruptions is largely governed by the geometry and depth of the plumbing system feeding the volcanic cones, and characteristically rapid magma ascent rates help to prevent the assimilation of country rock, thus preserving original geochemical signatures (Smith & Németh, 2017, and the references therein). However, investigation of whole rocks alone can be problematic and obscure key geochemical trends. Instead, targeted analysis of melt inclusions offers a direct record

Received: March 29, 2022. Revised: August 22, 2022. Accepted: August 22, 2022

© The Author(s) 2022. Published by Oxford University Press.

This is an Open Access article distributed under the terms of the Creative Commons Attribution License (<https://creativecommons.org/licenses/by/4.0/>), which permits unrestricted reuse, distribution, and reproduction in any medium, provided the original work is properly cited.

of evolving magma compositions prior to eruption and shallow degassing and the associated changes in volatile and metal contents (e.g. Rose-Koga *et al.*, 2021, and the references therein). Here, we collect new data for volatile components, including halogens (H<sub>2</sub>O, CO<sub>2</sub>, S, Cl, F), B isotopes, incompatible trace elements, and chalcophile metals (Se, As, Cu, Ag) for a suite of >150 melt inclusions (and corresponding bulk rocks) originating from several Holocene monogenetic scoria ( $\pm$  lava) cones across the Tolbachik monogenetic field, Kamchatka. The high density of large, glassy, naturally quenched melt inclusions in these samples render them an ideal candidate to decipher the complete history of how volatiles, halogens, and chalcophile metals evolve in magmas erupted from spatially proximal basaltic monogenetic cones, in a complex magma storage region (Portnyagin *et al.*, 2015; Churikova *et al.*, 2015b; Kugaenko & Volynets, 2019).

We interpret the new data within the existing framework of major element, trace element, and isotopic data for different eruptive products of the Tolbachik monogenetic field (e.g. Supplementary material of Churikova *et al.*, 2015a). Our new data reveal how melts from these monogenetic cones differ from those erupted at the older stratocone edifice and other more primitive cones (e.g. Portnyagin *et al.*, 2015; Churikova *et al.*, 2015a, 2015b). We also show that our new  $\delta^{11}\text{B}$  data fingerprint an isotopically homogenised melt reservoir that was likely a common source to all the monogenetic cones, prior to smaller batches derived from this common source undergoing their own fractional crystallisation  $\pm$  mixing histories before individual eruptions.

Additionally, melts from the Tolbachik volcanic massif are anomalously Cu-rich (Vergasova & Filatov, 2012; Portnyagin *et al.*, 2015; Mironov & Portnyagin, 2018), with magma evolution driving melts to higher Cu contents despite evidence for anomalous early and extensive silicate-sulphide immiscibility (Kamenetsky *et al.*, 2017; Zelenski *et al.*, 2018, 2022). This is in contrast to the decrease in Cu recorded in other sulphide-saturated systems globally (Jenner *et al.*, 2010; Chiaradia, 2014). We use the chalcophile metal systematics of these melt inclusions to illustrate the contrasting behaviour of Cu, Se, and Ag during the evolution of these arc magmas. The Cu-rich nature of the Tolbachik system requires evolution under sulphide-free conditions and illustrates how key trends in chalcophile metal ratios (S/Se, Cu/Se, Cu/Ag) can be used to further trace the mobility of S during melt degassing, the recycling of early formed immiscible magmatic sulphides and their metal budgets (e.g. Wieser *et al.*, 2020) and may also reveal information about the processes of mantle melting (e.g. de Hoog *et al.*, 2001; Zhang *et al.*, 2021; Deng *et al.*, 2022).

## GEOLOGIC BACKGROUND AND SAMPLE LOCALITIES

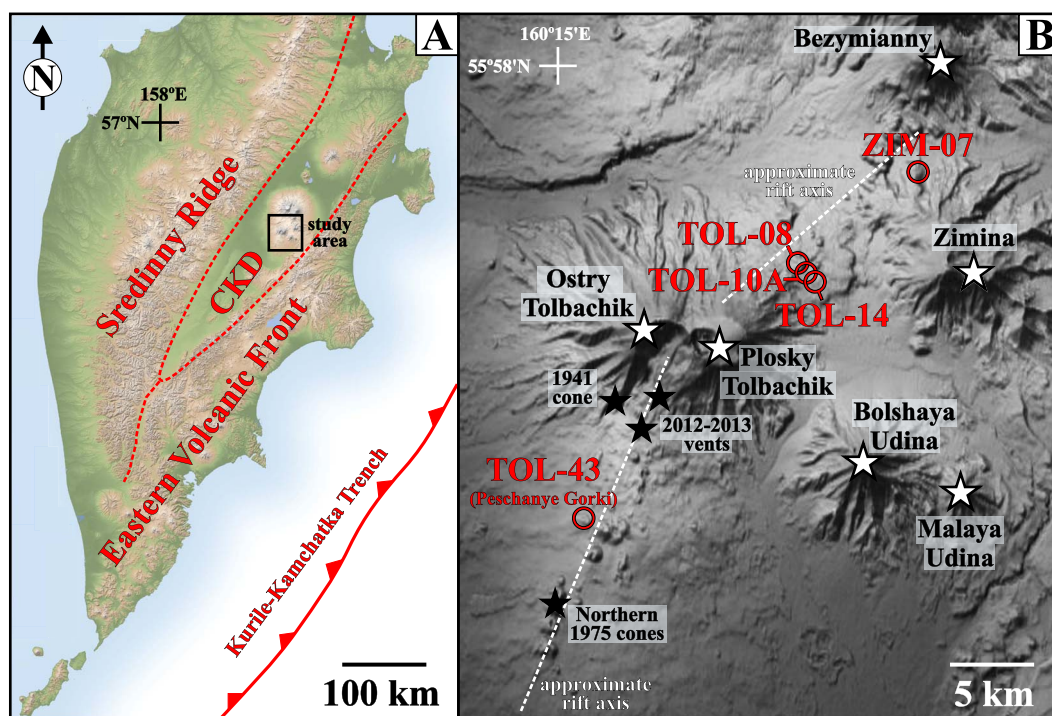
The late Pleistocene–Holocene Tolbachik volcanic massif is located in the south of the Klyuchevskaya volcanic group, situated in the north of the Central Kamchatka Depression, a zone interpreted to be undergoing intra-arc extension (Fig. 1A; Churikova *et al.*, 2015b). The massif comprises two stratovolcanoes, Ostry Tolbachik and Plosky Tolbachik, as well as scoria cones and related lava flows, and is one of the largest and most active volcanic regions in Kamchatka. Since the beginning of the Holocene eruptive activity has been focussed along a SW–NE fissure system that trends through the summit of the Plosky Tolbachik volcano (Fig. 1B). The length of the entire fissure zone is ca. 60 km and it is ca. 13–15 km wide. Numerous monogenetic cones, including those of recent historical eruptions (1941, 1975–1976, and 2012–2013), are all related to this fissure system. An in-depth review of the

eruption history of the massif, including petrology and physical volcanology, prior to the 2012–2013 eruption is available in Churikova *et al.* (2015a, and the references therein). Further details about the most recent 2012–2013 fissure eruption are presented by Belousov *et al.* (2015) and Volynets *et al.* (2015). Phenocrysts and melt inclusions from some of the historical eruptions have also been studied in greater detail (e.g. 1941 eruption (Kamenetsky *et al.*, 2017; Gurenko, 2021; Zelenski *et al.*, 2022), 1975–1976 eruption (Mironov & Portnyagin, 2018), 2012–2013 eruption (Plechov *et al.*, 2015)), alongside bulk rock measurements (Portnyagin *et al.*, 2015), and therefore provide comparative context to the Holocene monogenetic cones of this study, as discussed in later sections.

Broadly, the composition of erupted melts from the Tolbachik volcanic massif varies between high-Mg basalt and high-Al basalt, the latter comprising ~90% of all erupted material (Braitseva *et al.*, 1984), and with a suite of intermediate hybrids. General liquidus phenocryst assemblages of the Tolbachik rocks are dominated by olivine  $\pm$  clinopyroxene  $\pm$  plagioclase  $\pm$  Cr-spinel (Churikova *et al.*, 2015a). The whole suite can also be separated into distinct middle-K and high-K rock series that straddle the tholeiitic–calc-alkaline boundary and that show major and trace element differences (e.g. Churikova *et al.*, 2015b). Some modelling has suggested that the compositional variation produced by the Tolbachik plumbing system requires long-term open-system fractionation, accompanied by periodic replenishment and mixing between variably evolved melt batches derived from a primary, middle-K mantle-derived picrite melt (Portnyagin *et al.*, 2015). Other modelling by Churikova *et al.* (2015b) suggests that regional intra-arc rifting has allowed the establishment of the Holocene fissure system, in turn facilitating the upwelling and degassing of melts at shallow depths. This geodynamic change, relative to the periods of older stratovolcano magmatism, has shifted the conditions from water-rich (middle-K rocks) to relatively anhydrous (high-K rocks) and where extensive fractional crystallisation exerts the primary control on melt evolution. Following the convention of Churikova *et al.* (2015b), throughout the manuscript we refer to ‘Trend 1’ rocks as those related to the central stratovolcanoes and associated feeder dykes; whereas ‘Trend 2’ rocks are those erupted from the active monogenetic cone and fissure system.

The samples in this study are taken from five separate high-Al monogenetic cones (i.e. ‘Trend 2’) erupted along the SW–NE fissure system (Fig. 1B). Four samples are located along the sparsely studied NE-limb of the fissure, extending to the northern end of the system between Zimina and Bezymianny volcanoes, whereas the other sample is taken from the Peschanye Gorki cone along the SW-limb. The exact latitudes and longitudes of each cone are available in Supplementary Table 1. Cone ZIM-16-07 is coarsely age constrained to the Holocene, whereas cones TOL-16-08, TOL-16-10A, and TOL-16-14 have been dated at 1.4–7.8 ka, and TOL-16-43 was erupted 0.8–1.4 ka. The reader is referred to Flerov *et al.* (1984) and Churikova *et al.* (2015a, and the references therein) for a comprehensive map of the Tolbachik volcanic field that shows both ages and compositions of individual vents and lava flows, including the ones in this study. This study also reports previously unpublished trace element concentrations of melt inclusions from samples of the 2012–2013 eruption (Naboko cone; Fig. 1B), reported by Plechov *et al.* (2015), with these data available in the Supplementary Data A1.

While some cones investigated in this study produce eruptive products of both scoria and lava, only scoriaceous material was sampled to target naturally glassy melt inclusions. The scoria samples are dominated by olivine ( $\pm$  clinopyroxene) phenocrysts, with variably glassy groundmasses that contain plagioclase +



**Fig. 1.** [A] Simplified map of the Kamchatka peninsula showing the three main tectonic delineations of the Kamchatka arc; Eastern Volcanic Front (EVF), Central Kamchatka Depression (CKD), and Sredinny Ridge (SR). The approximate location of the Tolbachik Volcanic Massif and study area is given by the black square. [B] Enlarged view of the study area. The names and locations of main stratocone edifices are shown by the large white stars, with some of the Tolbachik-related eruptive products discussed in the text shown by smaller black stars. The locations and IDs of the monogenetic cones yielding melt inclusions and whole rocks analysed in this study are shown by the red circles and labels. Note that the samples from the 2012–2013 eruption with new data in this study (from Plechov *et al.*, 2015) originate from the Naboko cone (lower star). For this figure and all following figure legends, the [–16] designation has been removed from the sample name for brevity (e.g. TOL-16-08 = TOL-08). A comprehensive map of the Tolbachik monogenetic lava field with ages and compositions of individual vents and lava flows, modified after Flerov *et al.* (1984), is available in Churikova *et al.* (2015a). The base map image is an SRTM elevation model available from NASA/JPL/NIMA (<https://photojournal.jpl.nasa.gov/catalog/PIA03374>).

olivine ± clinopyroxene ± magnetite/Ti-magnetite (± minor Cr-spinel) microphenocrysts (up to *ca.* 50  $\mu\text{m}$  length). Olivine phenocrysts show little evidence for resorbed crystal faces or disequilibrium morphologies. Olivine crystals (and clinopyroxene; from sample TOL-16-43 only) were separated from the bulk scoria by hand crushing and picking. Melt inclusion-bearing phenocrysts were extracted, mounted in epoxy resin, and inclusions exposed by non-selective polishing. Most phenocrysts contained multiple, large (>50  $\mu\text{m}$ ) naturally glassy melt inclusions, readily visible in transmitted light, and equally distributed throughout core to rim zones (Fig. 2B). Only a minority of the inclusions contained small shrinkage bubbles and/or spinel inclusions (Fig. 2C), and inclusions were visually free of immiscible sulphide droplets. Remnants of groundmass glasses adhered to the phenocryst rims were also free of sulphides. The inclusions were imaged with backscattered electrons prior to any analysis and subsequently re-imaged under reflected light following each analytical technique to confirm the exact location of the analysis spot, as outlined in the next sections. The reader is referred to the accompanying ZIP archive file for reflected and transmitted light images of all melt inclusions in this study (pre- and post-analysis), along with representative groundmass BSE images from each scoria sample.

## ANALYTICAL METHODS

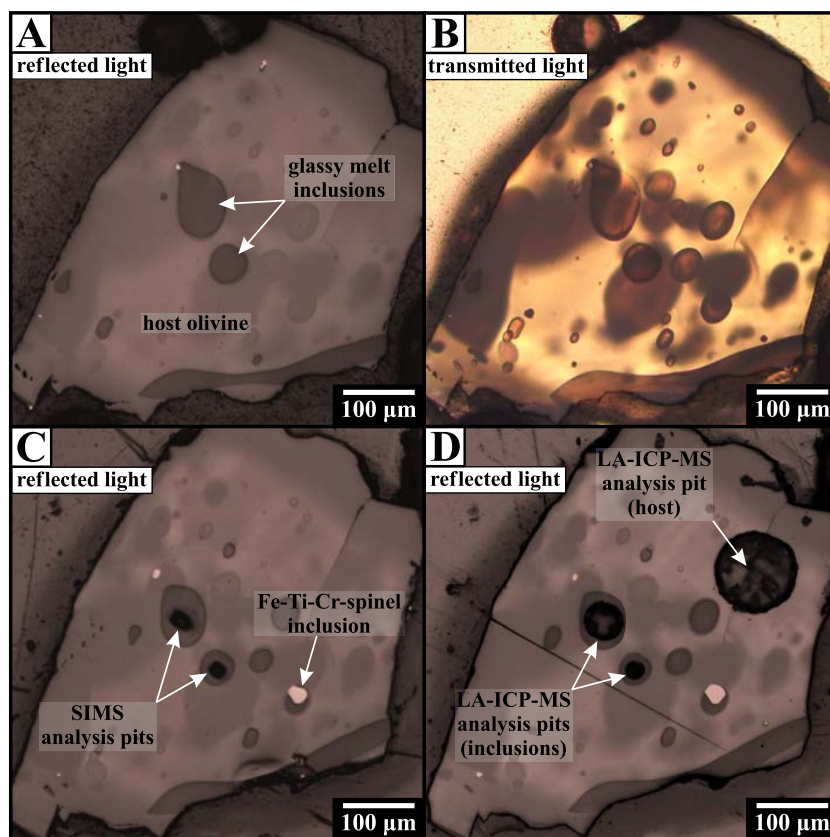
### Electron microprobe

The major, minor, and volatile (S, Cl) compositions of the melt inclusion glasses and host phenocryst phases were determined

using a JEOL JXA-8230 electron microprobe (EPMA) at the University of Leeds Electron Microscopy and Spectroscopy Centre. An accelerating voltage of 15 kV, a beam current of 30 nA, and a focused beam of 2  $\mu\text{m}$  diameter was used for crystal analyses. A two-step routine was employed for the melt inclusion glasses, where major and minor element concentrations were determined first using a defocused (10  $\mu\text{m}$ ) beam at 10 nA, followed by determination of Cl and S concentrations in the same analysis spot location using a 20 nA beam current with extended counting times and aggregated spectrometer intensities to improve analytical precision and detection limits. Full analytical details, data calibration, and standard reproducibility information are available in the Supplementary Methods of Iveson *et al.* (2021).

### Secondary ion mass spectrometry (SIMS)

Following EPMA analysis, the melt inclusions were analysed by secondary ion mass spectrometry (SIMS) across two sessions at the NERC Edinburgh Ion Microprobe Facility for H<sub>2</sub>O, CO<sub>2</sub>, F, Cl, and trace elements (Cameca IMS-4f) and subsequently for <sup>11</sup>B/<sup>10</sup>B (Cameca IMS-1270). Full details of the analytical procedures and calibration standard reproducibility data are available in the Supplementary Methods of Iveson *et al.* (2021). As a confirmation of analytical consistency, a comparison of Cl concentrations in the melt inclusions determined by both EPMA and SIMS methods gives excellent agreement between the two techniques (Supplementary Fig. 1A).



**Fig. 2.** Reflected light ([A], [C], [D]) and transmitted light ([B]) images of a single representative olivine phenocryst (TOL-16-10A-olivine21) before and after analysis by SIMS and LA-ICP-MS techniques. [A] Polished phenocryst prior to any analysis, showing two large, glassy and pseudo-spherical inclusions exposed at the surface. [B] Transmitted light image of [A] showing multiple unexposed inclusions of varying sizes, homogeneously distributed throughout the phenocryst and mostly free of post-entrapment shrinkage bubbles. [C] Phenocryst following analysis of the two large inclusions by SIMS for B isotopes and additional inclusions now exposed after further polishing. [D] Phenocryst following LA-ICP-MS analysis of both inclusions (one 50- $\mu\text{m}$  spot, one 25- $\mu\text{m}$  spot) and the host (110- $\mu\text{m}$  spot).

## Laser ablation ICP-MS

### Melt inclusion and host crystal trace elements

Trace element analyses of the melt inclusions and selected host phenocrysts were conducted at The School of Environment, Earth and Ecosystem Sciences, The Open University, using a Photons Machines Analyte Excimer 193 nm laser coupled to an Agilent 8800 triple quadrupole ICP-MS (ICP-QQQ) and following the analytical protocols established in Jenner & O'Neill (2012). The LA-ICP-MS analyses were conducted on the same mounts prepared for, and analysed by, EPMA and SIMS (Fig. 2) that were re-polished with 0.3  $\mu\text{m}$   $\text{Al}_2\text{O}_3$  slurry following the SIMS B-isotope analyses to remove any remaining Au coating.

A laser rep rate of 10 Hz, a fluence of 3.54 J/cm<sup>2</sup> and 30-s background collection followed by 30 s of signal were used for all samples analysed. Host phenocryst data were acquired with a 110- $\mu\text{m}$  beam diameter, whereas melt inclusions were ablated with either a 25- or 50- $\mu\text{m}$  beam depending on the size and shape of the inclusions (e.g. Fig. 2D). Laser aerosols were transported away from the ablation site by He (0.9 L/min) and downstream mixed with 0.77 L/min of Ar in a mixing bulb before introduction into the plasma. A total of 5 mL/min of N<sub>2</sub> was added to the carrier gas for analyses conducted using a 25- $\mu\text{m}$  spot size to increase the ionisation efficiency (Li data were not collected for analyses using a 25- $\mu\text{m}$  spot because addition of N<sub>2</sub> compromises the accuracy of Li analyses). All melt inclusions were also subject to four pre-ablation laser pulses (with the same laser energy and spot size as

the sample spots) to remove any residual surface material prior to collection of the spectra.

External calibration of data was conducted using NIST SRM-612. Reference materials BCR-2G and KL2-G were periodically analysed to determine the accuracy and precision of the data (full reproducibility data are given in the [Supplementary Data A2](#)). EPMA SiO<sub>2</sub> abundances for both melt inclusions and host crystals were used for internal calibration of LA-ICP-MS data. The collected spectra were processed using the Iolite software package (v. 3.71; Paton et al., 2011) and manually screened to remove data that clearly showed any signal indicative of an unintentional analysis of microphenocrysts or melt inclusions (e.g. strongly increased Mg or Ni intensity in melt inclusion spectra or resolvable Rb or Cs signal in host crystal spectra). Consistent with the visual absence of sulphide droplets, all Cu analyses showed a flat signal intensity during the ablation period, indicative of a homogeneous Cu distribution in the melt inclusion glass itself. As with EPMA vs SIMS, a comparison of various trace element concentrations measured by both SIMS and LA-ICP-MS methods also gives excellent analytical agreement ([Supplementary Figs 1B–D](#)).

### Melt inclusion Se and As analysis

Selected melt inclusions were also analysed for Se and As concentrations, using a separate analytical method to negate the effects of polyatomic and doubly charged interferences on these elements. To achieve this, the measured isotopes were mass shifted

( $^{80}\text{Se}^+ \rightarrow ^{96}\text{SeO}^+$ ;  $^{75}\text{As}^+ \rightarrow ^{91}\text{AsO}^+$ ), as per the methods outlined in Wieser *et al.* (2020). Melt inclusions were ablated in linear transects using a 50- $\mu\text{m}$  laser spot, 50 Hz rep. rate, 15- $\mu\text{m}/\text{sec}$  scan speed, and variable transect lengths, beginning and ending in the host olivine. The resultant signal intensities were screened to include only the portion of the analysis transect wholly within the melt inclusion glass (Supplementary Fig. 2). NIST SRM-612 was used as for external calibration of data, and accuracy and precision were monitored using in-house Se and As standards, with repeat analysis yielding values within 1%–7% of the preferred values described in Jenner *et al.* (2015) and Wieser *et al.* (2020) (also see Supplementary Data A2).

### Whole-rock x-ray fluorescence, solution ICP-MS, and multi-collector-ICP-MS

The major and minor oxide concentrations of the bulk scoria were measured by Bureau Veritas Mineral Laboratories, at the Poland-Krakow facility. Fresh, unaltered sample was mechanically crushed, split, and pulverised and then fused into glass discs with lithium tetraborate/metaborate flux. The glass discs were then analysed by standard x-ray fluorescence methods, and standard reproducibility data are available in Supplementary Data A3.

For solution ICP-MS, a 100-mg mass of fresh sample was subject to a multi-stage HF-HNO<sub>3</sub> digestion process, with low dry down temperatures (65°C) between each dissolution step to minimise volatile element loss. This dissolution process was undertaken in the isotope clean laboratory of the Durham University Earth Science Geochemistry Centre. Solutions for analysis were made up to 1000-fold dilutions of the original powder weight in 2% HNO<sub>3</sub>, including method and acid blanks. The trace element concentrations of the final solutions were then analysed using the Agilent 8800 ICP-QQQ at The Open University. Further details of the analytical technique are available in Cox *et al.* (2019), including the specific operating conditions for Se and Ag analyses. An unknown sample and the BHVO-2 reference material were measured every five or six unknown samples as a monitor block, to measure and correct for instrument drift. Accuracy and reproducibility data for BVHO-2 standard are available in Supplementary Data A2.

The B isotopic ratios of the bulk rocks were measured at the CNR-IGG Pisa, Italy, using a Thermo Neptune Plus multi-collector-ICP-MS. Powdered rock sample was fused with ultrapure K<sub>2</sub>CO<sub>3</sub> and B was then leached into solution. The resulting solutions were purified using Amberlite IRA-743 boron-specific anion exchange resin and an AG 50W-X8 cation exchange column. The full analytical details are available in the Supplementary Methods of Iveson *et al.* (2021).

Three additional whole rock samples (TOL-16-01, TOL-16-04, and TOL-16-19) were analysed for major element, trace element, and B isotope data only (with no corresponding melt inclusions) and are included for reference in Supplementary Table 1.

## RESULTS

### Olivine phenocrysts

Olivine phenocrysts across all five samples span a relatively restricted range in major element composition. The most primitive olivine are from sample TOL-16-14 and have an average composition of Fo<sub>76.8±0.2</sub> mol.%, whereas TOL-16-08 has the most evolved olivine populations, with an average composition of Fo<sub>74.6±0.4</sub> mol.% (Table 1). Only two individual analyses from a single olivine in sample TOL-16-43 (crystal ol-22) show more magnesian compositions ( $\geq\text{Fo}_{80}$ ), potentially indicating a xenocrystic core (Supplementary Data A4). Most

olivine are unzoned, or very weakly normally zoned, with core vs rim analyses generally within 1 mol.% Fo content within each crystal.

Consistent with the trends expected from fractional crystallisation of olivine ± clinopyroxene ± plagioclase ± Cr-spinel (e.g. Churikova *et al.*, 2015a), there are broad decreases in Ni and Cr with decreasing Fo content (Supplementary Fig. 3A), whereas there are moderate increases in Sc, Zn, and Y. Lithium, Cu, and Co contents show little overall correlation with Fo mol.% (Supplementary Fig. 3B) but as with other trace elements, each cone sample tends to form its own cluster of data, despite the restricted range in major elements. Full trace element data for the host crystals are available in Supplementary Data A5.

### Clinopyroxene phenocrysts

Pyroxene were analysed from sample TOL-16-43 only, and they have a homogeneous composition with little core-rim variation (Supplementary Data A4). All analysed pyroxene are calcic, Mg-rich and lie in the augite compositional space, containing up to 4.5 wt.% Al<sub>2</sub>O<sub>3</sub> and 2.05 wt.% Na<sub>2</sub>O, with average Mg/(Mg + Fe<sub>TOT</sub>) ratios = 0.74 ± 0.1.

Only a small number of trace element analyses were performed for the clinopyroxene ( $n=4$ ; Table 1) and all four crystals show similar trace element concentrations (Supplementary Data A5).

### Melt inclusions

#### Post-entrapment corrections

The measured olivine-hosted melt inclusion compositions were corrected for post-entrapment crystallisation (PEC) using the Petrolog3 software (Danyushevsky & Plechov, 2011). Glasses were corrected for Fe-loss (Danyushevsky *et al.*, 2000) and recalculated to equilibrium with the host phenocryst, using the Danyushevsky (2001) model calibrated for hydrous melt compositions. Corrections were performed at moderately oxidising conditions of QFM + 1.5 log units using the model of Borisov & Shapkin (1990), and the initial FeO concentration in the melt inclusions was specified as either 10.0 or 10.5 wt.%—close to the uncorrected maximum measured in the different melt inclusion suites and within 1 wt.% of the corresponding bulk-rock composition (Supplementary Table 1). The choice of the ‘true’ FeO concentration broadly affects the magnitude of the correction, i.e. the amount of olivine subtracted from, or added to, the melt inclusion composition, and given the limited petrographic evidence for PEC (e.g. fully glassy, spherical inclusions, with little/no faceting at the inclusion-host interface; Fig. 2) the choice of FeO content is consistent with this. The full uncorrected and PEC-corrected melt inclusion data are available in the Supplementary Data A6. On average, PEC corrections were small and required only 2.9 ± 2.1% olivine addition to the melt inclusion composition to achieve equilibrium with the host phenocryst. These generally small PEC corrections lead to similarly minor corrections to the melt inclusion trace element concentrations, via a ‘correction factor’ calculated as the corrected glass K<sub>2</sub>O concentration divided by the raw glass K<sub>2</sub>O concentration.

Conversely to the olivine-hosted melt inclusions, PEC corrections were not applied to the clinopyroxene-hosted MIs. Apparent  $K_d^{\text{cpx/liq}}_{\text{Fe-Mg}}$  values ( $K_d = (\text{XFe}/\text{XMg})^{\text{cpx}} / (\text{XFe}/\text{XMg})^{\text{melt}}$ ) calculated from cpx-melt inclusion pairs for each phenocryst are variable, ranging from 0.128 to 0.246, with an average of 0.188 ± 0.03 (Supplementary Fig. 4). However, 17 of the 42 melt inclusions show apparent  $K_d^{\text{cpx/liq}}_{\text{Fe-Mg}}$  values  $\geq 0.20$ , close to the assumed equilibrium  $K_d^{\text{cpx/liq}}_{\text{Fe-Mg}}$  of 0.22 of Lloyd *et al.* (2016) derived from clinopyroxene in hydrous basaltic andesite

**Table 1:** Average major element, trace element, and calculated end-member mineral compositions of the host phenocrysts to the melt inclusions from each monogenetic cone sample

	TOL-16-08		TOL-16-10A		TOL-16-14		TOL-16-43				ZIM-16-07	
	average	std. dev.	average	std. dev.	average	std. dev.	average	std. dev.	average	std. dev.	average	std. dev.
Olivine Fo (mol.%)	74.6	0.4	75.3	0.2	76.8	0.2	76.5	2.4	74.7	0.3		
Olivine Fa (mol.%)	24.6	0.4	23.9	0.2	22.5	0.2	22.9	2.3	24.7	0.3		
Cpx $X_{Wo-En-Fs}$ (mol.%)									38.6–45.3–16.1	1.3–0.7–1.0		
Cpx Mg/(Mg + Fe <sub>TOT</sub> )									0.74	0.01		
<b>EPMA (wt.%)</b>	n=17		n=17		n=14		n=26		n=18		n=13	
SiO <sub>2</sub>	38.61	0.49	38.57	0.51	38.75	0.63	38.42	0.53	50.65	0.74	37.99	0.16
TiO <sub>2</sub>	—	—	—	—	—	—	—	—	0.91	0.08	—	—
Al <sub>2</sub> O <sub>3</sub>	—	—	—	—	—	—	—	—	3.34	0.44	—	—
FeO	22.88	0.33	22.03	0.30	20.76	0.16	21.11	1.97	9.72	0.58	22.58	0.14
MnO	0.41	0.04	0.37	0.02	0.34	0.02	0.26	0.04	0.21	0.02	0.31	0.02
MgO	38.96	0.53	38.88	0.26	39.80	0.32	39.55	1.78	15.36	0.29	38.37	0.41
CaO	0.24	0.02	0.24	0.02	0.23	0.01	0.19	0.02	18.31	0.60	0.19	0.01
Na <sub>2</sub> O	—	—	—	—	—	—	—	—	1.79	0.20	—	—
Total	101.10	0.73	100.09	0.67	99.87	0.83	99.53	0.59	100.27	0.62	99.43	0.45
<b>LA-ICP-MS (µg/g)</b>	n=7		n=5		n=4		n=5		n=4		n=6	
P	217	71	168	36	141	44	208	39	—	—	179	40
Ca	1909	112	1672	96	2190	416	1573	117	—	—	1810	144
Ti	122	28	91	8	136	51	85	8	—	—	128	23
Li	6.07	0.32	5.72	0.40	5.08	0.38	6.47	0.64	2.96	0.45	5.08	0.34
Sc	7.90	0.56	6.57	0.51	6.29	0.20	7.10	0.36	109	7	7.89	0.37
V	7.86	0.55	6.85	0.62	6.86	0.65	9.66	0.60	403	31	7.39	0.58
Cr	33.3	2.5	39.6	3.2	62.5	2.6	64.0	11.6	1201	419	15.7	4.7
Co	215	8	223	10	212	7	219	8	53.0	4.5	218	4
Ni	671	12	850	41	1009	20	943	27	121	14	586	26
Cu	11.71	0.61	12.31	0.60	10.63	0.75	10.99	0.52	9.37	0.82	9.27	0.17
Zn	211	5	190	6	161	16	197	9	74.4	8.2	198	4
Sr	—	—	—	—	—	—	—	—	24.7	2.4	—	—
Y	0.30	0.04	0.25	0.03	0.23	0.02	0.26	0.04	26.3	1.9	0.29	0.08
Zr	—	—	—	—	—	—	—	—	27.4	2.0	—	—
Nb	—	—	—	—	—	—	—	—	0.029	0.004	—	—
Mo	—	—	—	—	—	—	—	—	0.017	0.002	—	—
Sn	—	—	—	—	—	—	—	—	0.365	0.082	—	—
La	—	—	—	—	—	—	—	—	1.32	0.10	—	—
Ce	—	—	—	—	—	—	—	—	6.18	0.44	—	—
Pr	—	—	—	—	—	—	—	—	1.38	0.06	—	—
Nd	—	—	—	—	—	—	—	—	8.86	0.17	—	—
Sm	—	—	—	—	—	—	—	—	3.54	0.12	—	—
Eu	—	—	—	—	—	—	—	—	0.968	0.037	—	—
Gd	—	—	—	—	—	—	—	—	4.62	0.28	—	—
Tb	—	—	—	—	—	—	—	—	0.732	0.041	—	—
Dy	—	—	—	—	—	—	—	—	4.93	0.25	—	—
Ho	—	—	—	—	—	—	—	—	1.06	0.10	—	—
Er	—	—	—	—	—	—	—	—	2.92	0.25	—	—
Tm	—	—	—	—	—	—	—	—	0.399	0.043	—	—
Yb	—	—	—	—	—	—	—	—	2.64	0.23	—	—
Lu	—	—	—	—	—	—	—	—	0.389	0.037	—	—
Hf	—	—	—	—	—	—	—	—	1.18	0.06	—	—

melts from Seguam and Fuego volcanoes, with very similar melt and phenocryst major element and H<sub>2</sub>O contents. The positive correlation between apparent  $Kd^{cpx/liq}_{Fe-Mg}$  and melt inclusion CaO concentration, along with the less spherical and more faceted melt inclusion shapes (Supplementary Fig. 4A), suggests that the most evolved cpx-hosted melt inclusions may have been subjected to moderate PEC (up to ca. 35%). However, since we do not use the cpx-melt inclusion pairs to explicitly reconstruct changes in equilibrium crystallisation conditions, in the following sections all cpx-hosted melt inclusions are discussed as uncorrected compositions, and in all figures, only cpx-hosted melt inclusions with  $Kd^{cpx/liq}_{Fe-Mg} > 0.20$  are plotted.

### Major, trace, and volatile elements

#### Olivine-hosted melt inclusions

After PEC corrections, the olivine-hosted melt inclusion compositions straddle the basalt-basaltic andesite to trachybasalt-basaltic trachyandesite fields (Fig. 3A). SiO<sub>2</sub> and alkali concentrations for ZIM-16-07 are similar to basalts of the 'Naboko' event produced during the 2012–2013 eruption (Plechov *et al.*, 2015), whereas the most primitive TOL-16-43 inclusions overlap with the more evolved groundmass glasses erupted from the 1975–1976 and other 0.8–7.8-ka cones (Mironov & Portnyagin, 2018). Generally, as with the olivine phenocryst compositions, each cone forms its own cluster of melt compositions, though with some

**Table 2:** Average (and standard deviations) for the major, minor, trace, volatile, and B isotopic compositions of the melt inclusions from each monogenetic cone sample

	TOL-16-08		TOL-16-10A		TOL-16-14		TOL-16-43		ZIM-16-07			
	average	std. dev.	average	std. dev.	average	std. dev.	average	std. dev.	average	std. dev.		
Host olivine Fo (mol.%)	74.7	0.5	75.3	0.2	76.8	0.2	76.0	1.3				
Host cpx $X_{W_0-En-Fs}$ (mol.%)									38.8–45.3–15.9	1.1–0.7–0.7		
<b>EPMA (wt.%)</b>	n=20		n=22		n=18		n=31		n=42		n=36	
SiO <sub>2</sub>	54.09	0.79	52.82	0.73	52.83	0.80	52.58	0.61	52.32	1.10	52.03	0.77
TiO <sub>2</sub>	1.76	0.11	1.67	0.09	1.54	0.09	1.74	0.10	2.59	0.16	1.62	0.11
Al <sub>2</sub> O <sub>3</sub>	15.68	0.31	16.16	0.27	15.97	0.27	15.92	0.49	14.13	0.70	16.54	0.36
FeO	9.47	0.68	9.50	0.37	9.52	0.29	9.53	0.48	10.69	0.74	9.17	0.37
MnO	0.17	0.03	0.16	0.03	0.15	0.03	0.17	0.04	0.17	0.03	0.17	0.03
MgO	3.73	0.67	3.87	0.35	4.53	0.28	3.44	0.55	3.11	0.52	3.70	0.31
CaO	7.79	0.40	8.03	0.22	8.12	0.25	8.60	0.46	6.31	0.62	7.87	0.49
Na <sub>2</sub> O	3.43	0.17	3.44	0.19	3.44	0.17	3.27	0.22	3.24	0.32	3.73	0.30
K <sub>2</sub> O	2.20	0.14	2.02	0.13	1.81	0.16	1.77	0.16	3.81	0.37	2.05	0.20
P <sub>2</sub> O <sub>5</sub>	0.69	0.04	0.63	0.03	0.53	0.05	0.56	0.04	1.19	0.13	0.59	0.09
S (µg/g)	501	73	412	47	477	106	478	146	168	65	735	167
Cl (µg/g)	546	72	641	47	568	84	470	72	590	236	669	103
H <sub>2</sub> O (by difference)	1.19	0.69	1.48	0.74	1.50	0.76	2.28	0.83	2.31	0.52	2.25	0.70
Total	99.23	0.99	98.48	0.73	98.62	0.90	97.75	0.70	97.66	0.53	97.72	0.69
<b>SIMS</b>	n=13		n=16		n=12		n=8		n=14		n=11	
H <sub>2</sub> O (wt.%)	1.81	0.32	1.88	0.27	1.73	0.17	1.67	0.45	1.01	0.11	2.59	0.34
CO <sub>2</sub> (µg/g)	200	99	247	78	238	70	535	389	160	33	255	170
F	360	21	392	22	350	21	371	23	456	40	368	58
Cl	561	85	632	27	612	93	493	27	603	54	666	68
Li	16.6	1.2	16.4	2.1	14.8	1.7	15.2	0.9	13.3	2.9	15.8	3.1
Be	1.80	0.10	1.75	0.06	1.47	0.06	1.62	0.12	2.20	0.15	1.63	0.12
B	52.7	2.5	49.5	2.0	41.8	2.9	41.5	2.5	79.9	6.7	40.4	2.0
Rb	65.4	4.2	58.0	2.6	51.2	3.6	42.5	3.3	98.5	10.5	47.2	3.4
Sr	321	10	341	11	351	22	335	12	362	27	335	11
Y	38.5	1.5	37.1	1.1	31.8	2.0	35.8	2.0	44.6	4.3	35.2	1.6
Zr	228	9	216	8	186	14	194	11	322	25	187	7
Nb	6.3	0.3	6.1	0.4	5.3	0.5	5.1	0.3	9.6	0.8	5.0	0.4
Ba	508	16	490	19	481	18	407	22	770	80	414	38
La	20.2	1.3	18.9	0.9	16.8	1.1	16.6	1.1	29.3	3.2	16.5	1.5
Ce	48.4	2.2	46.2	2.2	41.1	2.7	42.4	3.0	67.1	6.0	39.4	2.8
Pr	7.1	0.4	6.4	0.4	6.0	0.5	6.0	0.3	9.2	1.0	5.7	0.4
Nd	29.8	1.9	29.2	3.2	25.4	2.1	28.0	3.6	40.7	4.5	27.4	3.3
Sm	8.0	1.1	7.4	1.0	6.9	0.8	6.8	0.7	9.3	1.4	7.0	0.3
Eu	2.2	0.3	2.1	0.3	1.9	0.2	1.7	0.2	2.5	0.5	1.6	0.3
Gd	7.3	1.5	6.8	1.3	6.1	1.0	6.2	1.0	7.8	1.6	5.8	1.3
Yb	3.7	0.7	3.6	0.5	3.3	0.6	3.5	0.5	4.8	0.7	3.6	0.5
<b>SIMS B Isotopes</b>	n=7		n=7		n=5		n=9		n=5		n=7	
$\delta^{11}B$	+2.0	0.3	+2.2	0.4	+2.2	0.7	+2.1	0.6	+3.3	0.2	+1.0	0.7
<b>LA-ICP-MS (µg/g)</b>	n=10		n=7		n=5		n=12		n=6		n=6	
Li	18.6	0.5	17.7	2.3	14.3	1.3	17.4	-	-	-	15.2	0.3
Sc	26.4	3.4	24.7	1.6	25.6	3.2	26.2	3.6	25.6	3.9	27.9	1.0
V	314	42	307	11	339	32	370	73	234	37	313	28
Cr	29.3	14.8	24.8	4.2	45.6	6.0	48.7	8.4	25.7	17.4	9.4	2.6
Co	26.4	2.8	27.5	1.8	33.9	4.1	23.3	3.6	23.8	3.1	26.3	0.6
Ni	19.9	7.9	20.7	3.3	36.0	8.9	14.9	6.0	10.1	2.9	16.9	1.8
Cu	290	91	290	51	246	11	157	94	119	42	216	8
Zn	199	73	222	119	163	84	157	40	172	19	121	5
Rb	62.6	8.6	56.7	5.5	48.6	4.3	48.5	7.6	100.1	9.2	52.0	0.8
Sr	305	37	318	28	340	41	323	54	353	43	341	6
Y	35.4	4.6	33.7	2.6	28.3	3.1	30.6	5.4	35.9	2.5	33.0	1.2
Zr	215	27	197	15	174	26	165	29	267	19	182	2
Nb	6.39	1.03	5.81	0.27	4.76	0.20	4.68	0.81	8.76	1.07	4.82	0.19
Mo	2.18	0.31	1.89	0.31	1.66	0.33	1.49	0.23	3.15	0.53	1.60	0.12
Sn	2.01	0.25	1.79	0.17	1.61	0.13	1.71	0.41	2.26	0.18	1.59	0.09
Sb	0.44	0.12	0.36	0.05	0.26	0.05	0.31	0.10	0.52	0.07	0.27	0.02
Cs	2.02	0.31	1.78	0.14	1.67	0.08	1.51	0.25	3.04	0.37	1.67	0.02
Ba	513	71	461	57	456	9	413	72	715	126	426	7
La	19.8	1.5	16.7	1.9	15.4	1.1	15.2	2.2	25.0	4.5	15.4	0.3
Ce	50.0	4.7	42.0	3.4	38.1	3.9	38.8	6.3	59.2	7.9	38.1	0.5

(Continued)

Table 2: Continued

	TOL-16-08		TOL-16-10A		TOL-16-14		TOL-16-43		average	std. dev.	ZIM-16-07	
	average	std. dev.	average	std. dev.	average	std. dev.	average	std. dev.			average	std. dev.
Pr	6.49	0.95	6.09	0.48	5.41	0.41	5.69	0.85	8.30	1.10	5.47	0.10
Nd	30.8	3.3	27.5	1.3	24.6	2.8	24.9	3.3	38.2	3.6	25.9	0.8
Sm	7.08	1.10	6.91	0.71	6.37	0.89	6.17	0.97	8.52	1.15	6.13	0.27
Eu	2.10	0.23	1.88	0.27	1.94	0.39	1.81	0.22	2.37	0.26	1.86	0.06
Gd	6.88	1.19	6.40	0.76	5.64	0.76	6.04	0.76	8.83	0.97	6.20	0.20
Tb	1.08	0.19	0.99	0.10	0.87	0.11	0.97	0.21	1.10	0.10	0.97	0.03
Dy	6.60	1.03	6.27	0.68	5.69	0.72	5.82	1.04	7.13	1.04	5.94	0.38
Ho	1.46	0.21	1.32	0.16	1.09	0.13	1.28	0.18	1.36	0.15	1.21	0.04
Er	4.00	0.57	3.85	0.18	3.09	0.33	3.44	0.49	3.99	0.49	3.65	0.29
Tm	0.55	0.05	0.52	0.05	0.43	0.05	0.48	0.05	0.59	0.09	0.53	0.02
Yb	3.70	0.46	3.51	0.50	2.93	0.31	3.69	0.85	4.39	0.53	3.83	0.36
Lu	0.57	0.08	0.53	0.09	0.43	0.10	0.53	0.15	0.60	0.10	0.55	0.07
Hf	6.01	0.90	5.39	0.41	3.89	0.38	4.86	1.05	6.83	0.96	4.56	0.20
Ta	0.40	0.09	0.39	0.07	0.30	0.08	0.35	0.12	0.63	0.15	0.28	0.02
W	0.50	0.06	0.48	0.05	0.36	0.05	0.37	0.05	0.65	0.16	0.34	0.02
Tl	0.10	0.02	0.13	0.03	0.09	0.03	0.11	0.02	0.18	0.05	0.12	0.00
Pb	6.83	0.82	6.27	0.59	5.40	0.22	5.82	0.99	9.40	1.37	5.27	0.10
Bi	0.04	0.01	0.05	0.01	0.03	0.01	0.03	0.01	0.06	0.01	0.04	0.00
Th	2.41	0.38	2.23	0.16	1.83	0.10	1.77	0.30	3.20	0.59	1.81	0.04
U	1.58	0.21	1.39	0.11	1.10	0.07	1.16	0.17	1.96	0.34	1.10	0.05
		n=2		n=1		n=3		n=3		n=0		n=1
As	3.14	—	2.93	—	2.50	0.04	2.61	0.03	—	—	2.57	—
Se	0.193	0.012	0.236	—	0.184	0.020	0.155	0.015	—	—	0.198	—

Average compositions of the host phenocryst phase also given. Data are uncorrected for the effect of PEC on melt inclusion composition (see Results section for further details).

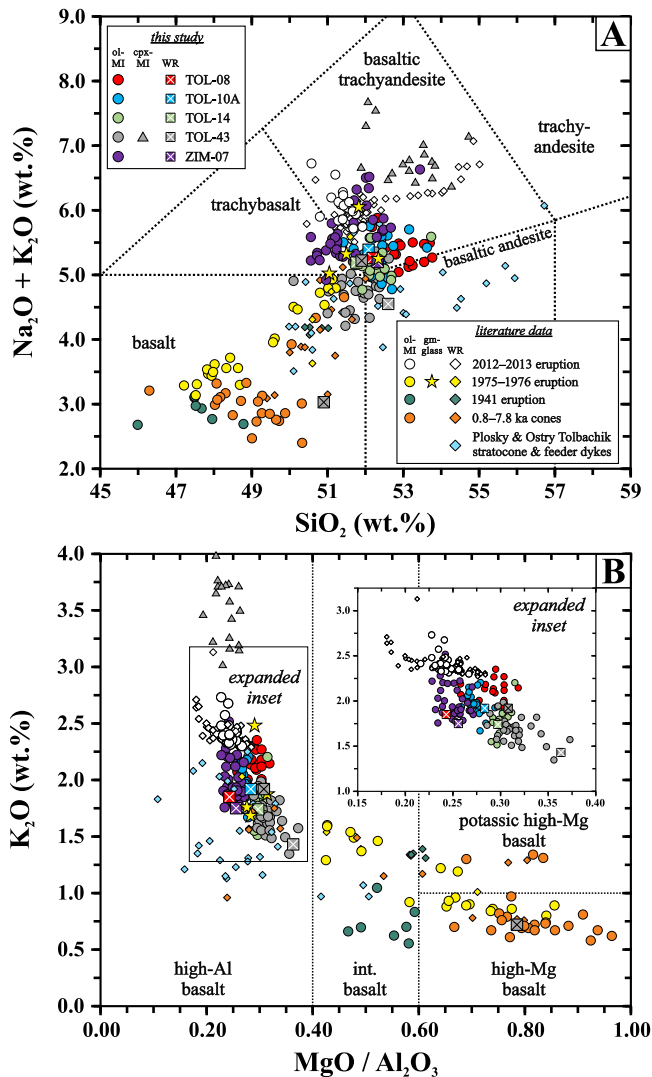
overlap (e.g. Fig. 3B, inset). A plot of MgO/Al<sub>2</sub>O<sub>3</sub> vs K<sub>2</sub>O can be used to differentiate the high-Mg and high-Al suites of Tolbachik rocks (e.g. Flerov et al., 1984), confirming that the new melt inclusion samples belong to the high-Al group of melts, unlike high-Mg melt inclusions sampled from rare eruptions in the southern part of the massif, including some 0.8–7.8-ka cones, and the 1941 and 1975–1976 eruptions (Fig. 3B). The middle-K rocks of the Plosky Tolbachik and Ostry Tolbachik stratocones (i.e. ‘Trend 1’) fall on a separate lower-alkali trend compared with the melt inclusions from this study that are higher-K (Churikova et al., 2015b), and which also have FeO/MgO ratios that show a more tholeiitic affinity (FeO/MgO between 2–2.5 at SiO<sub>2</sub> = 50–53 wt.%).

Prior data for the high-K basaltic rocks at Tolbachik show that they have typical arc-like trace element signatures, with strong but variable enrichment in large ion lithophile elements and light rare earth elements (Churikova et al., 2015b). Relative to the high-Mg series, they are also strongly enriched in Rb, Ba, Li, B, Be, and in most incompatible trace elements (except Sr) including HFSE (Zr, Nb, Ta, Hf), Y, and REE (Churikova et al., 2015a). The trace element signatures of the melt inclusions from the cone samples in this study are consistent with these observations. Trace elements such as Li and B behave conservatively and correlate positively with indices of fractionation (i.e. K<sub>2</sub>O) and increase by approximately threefold relative to the higher-Mg melt inclusions from the 1941 eruption (Fig. 4). Consistent with the higher alkali contents, melt inclusions from the 2012–2013 eruption are generally more fractionated than the studied cone samples, and average 63.7 ± 2.3 μg/g B, relative to an average of 44.7 ± 5.1 μg/g B across the new samples in this study.

Trace element ratio binary diagrams indicate that the melt inclusions match the ‘Trend 2’ rocks of Churikova et al. (2015b). In particular, the new cone samples have trace element ratios (e.g. lower Sr/Sm and Sr/Y; Supplementary Fig. 5) that indicate a greater influence of plagioclase crystallisation, relative to ‘Trend

1’ rocks (comprising the lower parts of stratovolcanoes, most of the upper stratovolcano, and some dykes; Churikova et al., 2015b). Incompatible trace element ratios (Fig. 5) again show tight clusters for each cone, and Nb/Zr ratios that are similar across the range in K<sub>2</sub>O contents of the new cone samples, most of the stratocone samples, the 2012–2013 eruption melt inclusions, and the high-Mg 1941 eruption melt inclusions (Fig. 5B and C). Conversely, Rb/Ba shows a broad positive correlation with increasing K<sub>2</sub>O (Fig. 5F) and strongly overlaps with the 2012–2013 whole rock data, and other ‘Trend 2’ rocks (Fig. 5E). These data are discussed in greater detail in later sections. The full trace element data are available in Supplementary A6.

Melt inclusion CO<sub>2</sub> contents were not reconstructed for the formation of shrinkage bubbles (e.g. Moore et al., 2015; Wallace et al., 2015), and thus H<sub>2</sub>O-CO<sub>2</sub> concentrations measured in the glasses represent minimum values (e.g. Gaetani et al., 2012). However, the majority of melt inclusions lack shrinkage bubbles (Fig. 2B), and there are consistent differences between the volatile inventories of the different cone samples (Fig. 6A). The highest water contents (ca. 3 wt.%) are recorded by the most evolved sample ZIM-16-07, whereas the highest CO<sub>2</sub> contents (ca. 1250 μg/g) are preserved in the most primitive TOL-16-43 melt inclusions. The highest calculated saturation pressures calculated from H<sub>2</sub>O-CO<sub>2</sub> solubility modelling (VESICAL; Iacovino et al., 2021 using MagmaSat; Ghiorsso & Gualda, 2015) are ca. 220 MPa, in melt inclusions from TOL-16-43. The three closely situated cones (Fig. 1B) all record very similar maximum H<sub>2</sub>O contents (ca. 2 wt.%) and CO<sub>2</sub> contents (100–400 μg/g) giving a cluster of minimum entrapment estimates between 50 and 110 MPa, similar to the volatile concentrations from the 2012–2013 eruption (Fig. 6A). In other Tolbachik magmas, the highest H<sub>2</sub>O contents (up to 5.3 wt.%) and CO<sub>2</sub> contents (>7000 μg/g) were measured in higher-Mg 1941 samples (Kamenetsky et al., 2017; Zelenski et al., 2022), yielding minimum entrapment pressures between 300 and 400 MPa, and up to



**Fig. 3.** Olivine (PEC corrected)- and clinopyroxene (uncorrected, anhydrous basis)-hosted melt inclusion compositions and bulk rock compositions from the new cone samples in this study, along with literature data for several other Tolbachik eruptions (both bulk rock and melt inclusion samples). [A] Total alkali-silica plot showing the melt inclusions lie mostly in the trachybasalt and basaltic trachyandesite fields and generally with distinct clusters for each cone sample. [B] The  $\text{MgO}/\text{Al}_2\text{O}_3$  ratio vs  $\text{K}_2\text{O}$  concentration for the melt inclusions and bulk rocks, with an expanded inset for the melt inclusions in this study and the 2012–2013 eruption inclusions. Compositional delineations after Flerov *et al.* (1984) and Portnyagin *et al.* (2015). Note the two grey squares with black crosses are bulk rock data from Portnyagin *et al.* (2015) for the same Peschanye Gorki cone (one high-Mg, one high-Al) as analysed in this study (TOL-16-43; grey square white cross). Literature data sources for melt inclusions and bulk rocks included for comparison are consistent in all subsequent figures and are as follows: Plosky and Ostry stratocones and feeder dykes (Churikova *et al.*, 2015b); 0.8–7.8 ka cones (Portnyagin *et al.*, 2015; Mironov & Portnyagin, 2018); 1941 eruption (Churikova *et al.*, 2015b; Kamenetsky *et al.*, 2017); 1975–1976 eruption (Portnyagin *et al.*, 2015; Mironov and Portnyagin, 2018); 2012–2013 eruption (Churikova *et al.*, 2015b; Plechov *et al.*, 2015; Portnyagin *et al.*, 2015; Volynets *et al.*, 2015). As in all subsequent figures, only cpx-hosted melt inclusions with  $\text{Kd}^{\text{cpx/liq}}_{\text{Fe-Mg}} > 0.20$  are plotted.

$\geq 700$  MPa if corrected for potential  $\text{CO}_2$ -loss to post-entrapment shrinkage bubbles.

Sulphur contents of the melt inclusions correlate positively with  $\text{MgO}/\text{Al}_2\text{O}_3$  ratios and negatively with  $\text{K}_2\text{O}$  (Fig. 6B), for both the high-Mg melt inclusions reported in the literature as well as

four of the samples in this study, again with each cone tending to form a cluster. Maximum S contents up to ca. 1000  $\mu\text{g}/\text{g}$ , however, are found in the ZIM-16-07 cone and do not correlate with the  $\text{MgO}/\text{Al}_2\text{O}_3$  ratio of the inclusions. These inclusions also show the largest range in S contents, from ca. 200 to  $>1000$   $\mu\text{g}/\text{g}$ , relative to the more clustered S contents of the other cones. In contrast to  $\text{H}_2\text{O}$ ,  $\text{CO}_2$ , and S, both Cl and F are essentially immune from diffusive re-equilibration and shrinkage bubble formation during melt inclusion post-entrapment modification at magmatic temperatures (Bucholz *et al.*, 2013). Average Cl contents across all melt inclusions are  $585 \pm 85$   $\mu\text{g}/\text{g}$ , and average F concentrations are  $360 \pm 33$   $\mu\text{g}/\text{g}$ . The Cl/Nb and F/Zr ratios of the inclusions correlate positively, with tightly clustered data for each cone (Fig. 6C). Application of the Webster *et al.* (2015) Cl-solubility model to the melt inclusion compositions at 1000°C and 200 MPa storage conditions predicts maximum Cl solubilities (when in equilibrium with hydrosaline brine) ca. 2 wt.% Cl, significantly higher than actual measured Cl concentrations. Overall, melt inclusions from ZIM-16-07 record the highest  $\text{H}_2\text{O}$ , S, and Cl/Nb and F/Zr values of the samples in this study. The more primitive 1941 eruption melt inclusions (Kamenetsky *et al.*, 2017; Zelenski *et al.*, 2022) have average Cl and F contents that are both higher than the high-Al melts in this study,  $1247 \pm 99$   $\mu\text{g}/\text{g}$  and  $554 \pm 58$   $\mu\text{g}/\text{g}$ , respectively, that testify to apparent volatile loss during melt evolution. The primitive 1941 eruption melt inclusions also record anomalously high S contents, up to ca. 11 500  $\mu\text{g}/\text{g}$ , and evidence for co-existing magmatic sulphide globules with anhydrite in the quenched inclusion glasses (Zelenski *et al.*, 2022). See later Discussion sections for further consideration of these data.

### Clinopyroxene-hosted melt inclusions

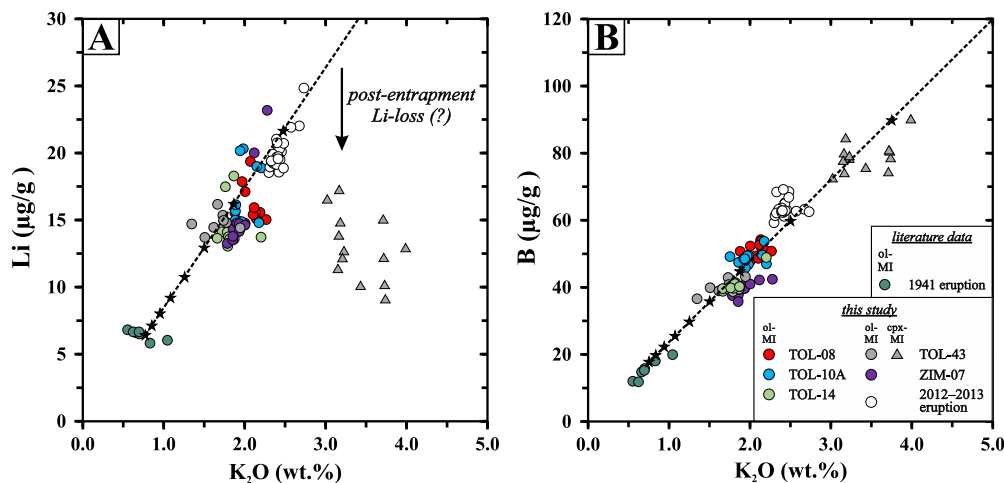
The cpx-hosted melt inclusions from sample TOL-16-43 are more strongly fractionated than the olivine-hosted inclusions from the same sample, and the inclusions with  $\text{Kd}^{\text{cpx/liq}}_{\text{Fe-Mg}} > 0.20$  are basaltic trachyandesites (Fig. 3A). Relative to the ol-hosted inclusions, they have approximately twice the  $\text{K}_2\text{O}$  contents with only a moderate increase in  $\text{SiO}_2$  (Fig. 3B).

Trace elements such as B (Fig. 4B) and Rb (Supplementary Fig. 6) show perfectly incompatible behaviour, increasing proportionally with  $\text{K}_2\text{O}$ . However, Li appears to have been affected by post-entrapment loss (Fig. 4A; Audétat *et al.*, 2018). A comparison of the most primitive cpx-hosted inclusion (based on  $\text{K}_2\text{O}$  concentration) relative to the average of the ol-hosted inclusions from TOL-16-43 (Supplementary Fig. 6) suggests ~50% fractional crystallisation is required to explain the twofold increase in the most incompatible trace elements, assuming a bulk  $D^{\text{mineral/melt}} \approx 0$  for both B and Rb. Incompatible trace element ratios, e.g. Nb/Zr and Rb/Ba, are broadly the same as the ol-hosted inclusions (Fig. 5C and F).

Relative to the ol-hosted inclusions, volatile species ( $\text{H}_2\text{O}$ ,  $\text{CO}_2$ , and S) show lower concentrations (Fig. 6).  $\text{H}_2\text{O}$ - $\text{CO}_2$  calculated saturation pressures cluster at  $\leq 50$  MPa, and S contents are strongly degassed, averaging ca. 200  $\mu\text{g}/\text{g}$ . Fluorine and Cl contents are slightly enriched (Supplementary Fig. 6) but not to the extent expected for ~50% fluid-absent fractional crystallisation of an anhydrous mineral assemblage. Cl/Nb and F/Zr values are therefore the lowest of all samples measured (Fig. 6C) and lower than the ol-hosted inclusions from the same sample.

### B isotopes

The olivine-hosted melt inclusion compositions from all cones span a very narrow range in B isotope composition, from  $\delta^{11}\text{B} \approx 0\text{‰}$  at the lightest to  $\delta^{11}\text{B} \approx +3\text{‰}$  at the heaviest (Fig. 7), with an average of  $\delta^{11}\text{B} = +1.9 \pm 0.7\text{‰}$  across the whole dataset. Only



**Fig. 4.** Melt inclusion Li [A] and B [B] concentrations vs K<sub>2</sub>O for the new monogenetic cones in this study, the 2012–2013 eruption, and the higher-Mg 1941 eruption (Kamenetsky *et al.*, 2017). Note that modelling by Churikova *et al.* (2015b) has demonstrated that the composition of the 1941 eruption can be considered close to parental to the ‘Trend 2’ rock suite, to which these new melt inclusions belong. Both Li and B show fully incompatible mineral-melt partitioning behaviour, increasing proportionally with K<sub>2</sub>O from the high-Mg inclusions to the high-Al ones. The dashed lines show a simple fractional crystallisation model starting with an average 1941 eruption melt composition and where bulk  $D_{Li}^{mineral/melt}$ ,  $D_B^{mineral/melt}$ , and  $D_{K_2O}^{mineral/melt} = 0$ , with the stars representing 10% increments of fractionation. Lithium and B concentrations both suggest ~50%–60% crystallisation is responsible for the evolution from the 1941 melt composition to the monogenetic cones of this study, increasing to ca. 70% for the 2012–2013 eruption. Note that clinopyroxene-hosted melt inclusions may be susceptible to post-entrapment Li modification (e.g. Audétat *et al.*, 2018).

three melt inclusions from ZIM-16-07 are isotopically lighter than  $\delta^{11}B = +1\%$ . On average, clinopyroxene-hosted inclusions from TOL-16-43 are moderately heavier than olivine-hosted inclusions from the same sample ( $\delta^{11}B = +3.3 \pm 0.2\%$  vs  $\delta^{11}B = +2.1 \pm 0.6\%$ , respectively). These very tightly clustered inclusions are in stark contrast to the isotopic data for melt inclusions of the 1941 Tolbachik eruption (Gurenko, 2021) that show an apparently large range in  $\delta^{11}B$ , from  $-9.7 \pm 2.3$  to  $+5.4 \pm 2.0\%$ , and which are found in different eruptive sample types (lava vs lapilli and scoria).

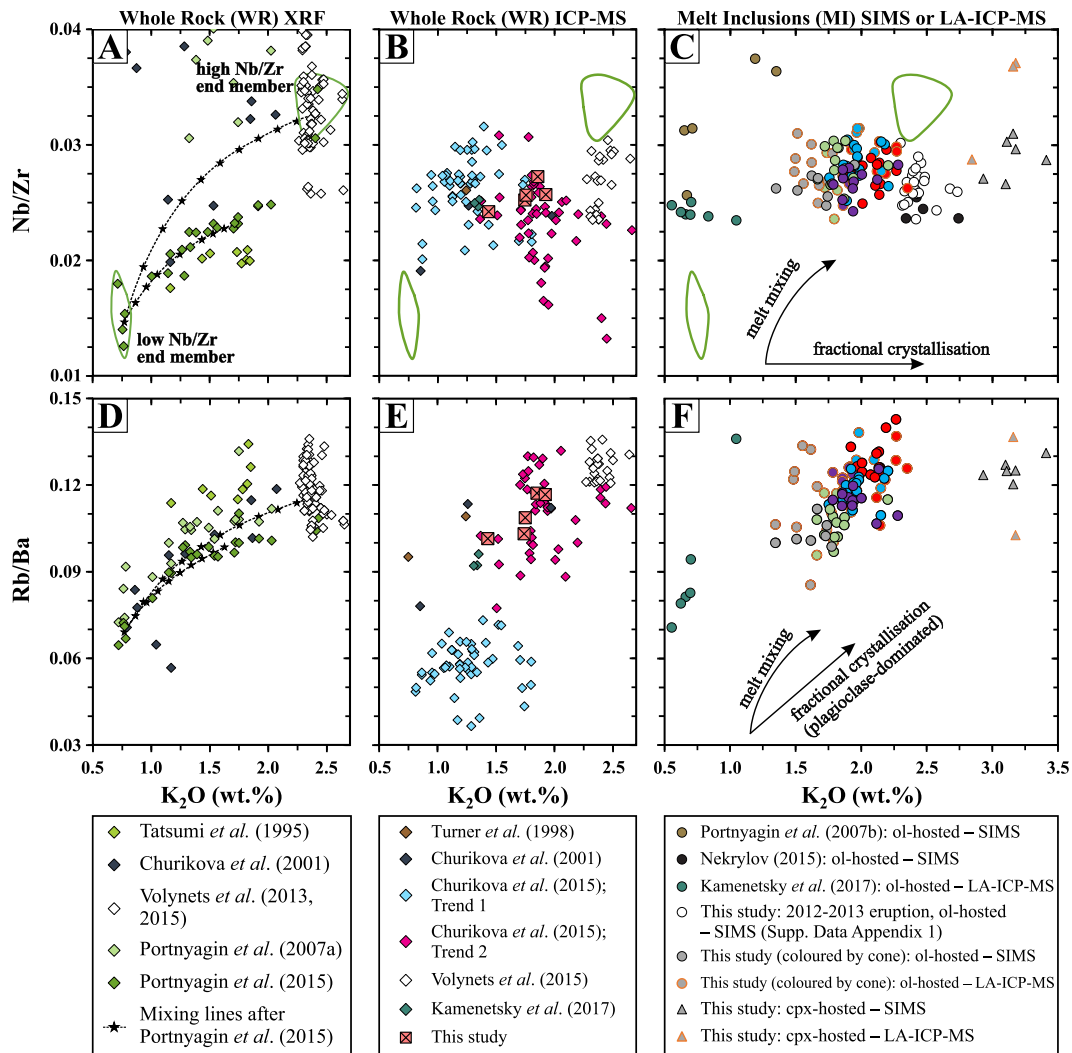
The small range in  $\delta^{11}B$  values of the melt inclusions do not correlate strongly with any major or trace element signature, such as MgO/Al<sub>2</sub>O<sub>3</sub>, Ce/B, and Nb/Zr (Fig. 7), or volatile concentrations or ratios, including Cl/Nb and S/K<sub>2</sub>O. Consistent with other melt inclusion suites in Kamchatka (Iveson *et al.*, 2021), the whole rock  $\delta^{11}B$  values generally reflect the average  $\delta^{11}B$  of the corresponding melt inclusions from that sample, and range from  $\delta^{11}B = +1.65$  to  $+2.44\%$  in these whole rocks (Supplementary Table 1).

### Chalcophile elements: Cu, Se, As, and Ag

Previous work has identified high Cu concentrations in various eruptive products of the Tolbachik volcanic fields (Vergasova *et al.*, 2007; Vergasova & Filatov, 2012; Portnyagin *et al.*, 2015; Mironov & Portnyagin, 2018), and rocks from the most recent 2012–2013 eruption were some of the most strongly Cu-enriched (up to ca. 450 µg/g; Volynets *et al.*, 2015) of any measured samples. The new melt inclusions in this study have average Cu concentrations >220 µg/g, also reaching a maximum of ca. 450 µg/g in two inclusions from TOL-16-08. Across the whole sample suite, only six of the inclusions from TOL-16-43 have Cu <100 µg/g, and which correlates positively with Ni for those inclusions, potentially indicating a role for PEC modification and/or diffusive re-equilibration of original Cu contents (e.g. Audétat *et al.*, 2018). When data from all ‘Trend 2’ Tolbachik samples, excluding ‘Trend 1’ stratocones and feeder dykes, are taken together there is a generally negative relationship with MgO; high-Mg basalts average ca. 125 µg/g Cu at >10 wt.% MgO, increasing to >400 µg/g for the high-Al suite with ~4 wt.% MgO (Fig. 8). This contrasts with the generally positive relationship between Cu and MgO for

other Kamchatka volcanic rocks, such as Bakening and Shiveluch, that show pseudo-linear downward trajectories with decreasing MgO concentrations, similarly to the MORB array (Fig. 8). Copper data for Gorely volcano (Gavrilenko *et al.*, 2016) show a distinct downwards kink ca. 3 wt.% MgO, which coincides with the onset of magnetite crystallisation and concurrent decreases in V, FeO, and TiO<sub>2</sub> in those rocks (e.g. Jenner *et al.*, 2010). The older ‘Trend 1’ Plosky and Ostry stratocones and associated rocks range from <40 to ca. >200 µg/g Cu, with no strong correlation with melt MgO. In summary, the rocks of ‘Trend 2’ (including the new monogenetic cone samples) from Churikova *et al.* (2015b) are consistently higher Cu than those from ‘Trend 1’ (stratovolcanoes and feeding dykes).

Selenium concentrations in the Tolbachik melt inclusions cluster around an average of  $0.178 \pm 0.026$  µg/g and are therefore greater than the corresponding bulk-rock concentrations for all samples except TOL-16-08 (Supplementary Table 1). The Tolbachik melts span to higher Cu and lower Se compared with global MORB and produce a range in Cu/Se that shows the highest values currently measured in any glassy arc sample (Cu/Se > 1500; Fig. 9A). The only other comparable continental arc data for Se are from Antuco volcano, Chile, reported by Cox *et al.* (2019). Very high bulk-rock Cu/Se (spanning to >7000) in the Antuco samples results from bulk Se concentrations that are an order of magnitude lower than those measured in these Tolbachik melt inclusions (Se =  $0.029 \pm 0.016$  µg/g; Cox *et al.*, 2019). The Cu/Se values of the Tolbachik melt inclusions are higher than Hawaiian glass samples (Wieser *et al.*, 2020) and backarc basin glasses prior to sulphide saturation (Jenner *et al.*, 2010, 2015), and result from generally elevated Cu contents relative to these other datasets. Conversely, the Tolbachik samples have average S/Se values of ca.  $3000 \pm 600$  that are comparable to oceanic plateau basalts and overlap primitive mantle values (Fig. 9B). The Tolbachik samples have not only high Cu/Se but also significantly higher As (2.42–3.03 µg/g) compared with global MORB samples, Hawaiian glasses, and backarc basin glasses. Arsenic contents are comparable to the Antuco stratocone samples at equivalent MgO contents (ca. 2–3 µg/g at ca. 4 wt.% MgO; Cox *et al.*, 2019).

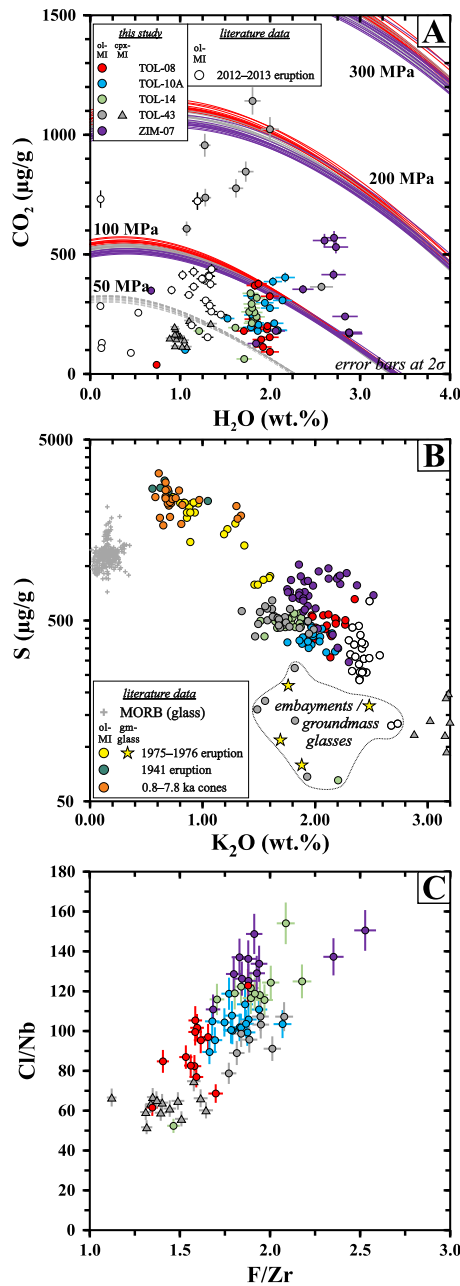


**Fig. 5.** Variability in incompatible trace element ratio (Nb/Zr and Rb/Ba) vs  $K_2O$  in Tolbachik rocks. Panels [A] and [D] are x-ray fluorescence (XRF) measurements of whole rocks, panels [B] and [E] are ICP-MS measurements of whole rocks, and panels [C] and [F] are measurements of melt inclusions by SIMS and/or LA-ICP-MS. Whole rock XRF data from Volynets *et al.* (2013, 2015) and Portnyagin *et al.* (2015) define two groups of samples—one with low  $K_2O$  and low Nb/Zr and another with high  $K_2O$  and high Nb/Zr (green circled areas). These groups overlap some literature measurements (Tatsumi *et al.*, 1995; Churikova *et al.*, 2001; Portnyagin *et al.*, 2007a) and were used as end-member compositions for binary mixing trajectories (e.g. Portnyagin *et al.*, 2015; dotted curves with stars = 10% mixing increments) in the Tolbachik compositional suite (panels [A] and [D]). However, exactly the same samples of the 2012–2013 eruption analysed using ICP-MS by Volynets *et al.* (2013, 2015) show the absence of a high Nb/Zr signature (Volynets *et al.*, 2015), which is consistent with most ICP whole rock measurements by other authors (Turner *et al.*, 1998; Churikova *et al.*, 2001; Kamenetsky *et al.*, 2017; this study; panel [B]). Moreover, neither ICP-MS measurements of whole rocks nor the measurements of melt inclusions from this and other studies (Portnyagin *et al.*, 2007b, Nekrylov, 2015; Kamenetsky *et al.*, 2017; this study; panel [C]) can corroborate the existence of the high Nb/Zr end-member from Portnyagin *et al.* (2015). Although ICP-MS data for whole rocks (panel [B]) and measurements of melt inclusions (panel [C]) show some variance, systematic changes in the Nb/Zr ratio vs  $K_2O$  are not observed. Instead, the constant ratio of incompatible elements across a range in  $K_2O$  contents indicates that fractional crystallisation is the strongest control on the evolution of the Tolbachik rock suite. The plot of Rb/Ba vs  $K_2O$  (panel [E]) does not reflect the mixing of magma but demonstrates their division into two trends in accordance with (Churikova *et al.*, 2015b). The incorporation of Ba during abundant plagioclase crystallisation leads to an increase in the Rb/Ba ratio for rocks of ‘Trend 2’. Note that, as can be seen in panel [F], melt inclusions of ‘Trend 1’ rocks were not measured in this study. Also note that the arrows indicating the general trend for fractional crystallisation vs melt mixing process are schematic. In panels [C] and [F], melt inclusions from the cones analysed in this study are colour-coded by sample and are consistent with all other figures. The outline colour differentiates the analytical technique; black = SIMS, orange = LA-ICP-MS.

Melt inclusion data for Ag were not collected; however, bulk rock analyses show Ag concentrations of  $0.0539 \pm 0.0092 \mu\text{g/g}$  (Supplementary Data A1) that are higher and less variable than Antuco samples ( $0.0421 \pm 0.0118 \mu\text{g/g}$ ). These Ag concentrations give average Cu/Ag ratios of ca.  $3800 \pm 300$ , similar to MORB values of ca.  $3500 \pm 500$  (Jenner & O’Neill, 2012) and higher than Antuco bulk rocks at equivalent MgO contents ( $\text{Cu/Ag} \approx 1750$  at ca. 5 wt.% MgO; Fig. 9C).

### Olivine-melt partitioning of Cu

An additional method to investigate the variability in melt Cu concentrations is to apply equilibrium crystal-melt partition coefficients to the host phenocryst compositions. Portnyagin *et al.* (2017) specifically analysed olivine-melt inclusion pairs from Tolbachik cone ‘Mt. 1004’, and two other primitive Kamchatkan volcanoes. They report a very consistent  $D_{\text{Cu}}^{\text{ol/melt}}$  of  $0.028 \pm 0.009$  (Supplementary Fig. 7A), across all three volcanoes, and across a



**Fig. 6.** [A]  $\text{H}_2\text{O}$ – $\text{CO}_2$  concentrations measured in the melt inclusion glasses in this study, and melt inclusions of the 2012–2013 eruption (Plechov *et al.*, 2015). Saturation isobars for all melt inclusions from samples TOL-16-08 (red curves), TOL-16-43 (grey curves; dotted = cpx-hosted inclusions), and ZIM-16-07 (purple curves) were computed at the specified pressure using VESical (v. 0.1.8; Iacovino *et al.*, 2021; Wieser *et al.*, 2021) with the MagmaSat model (Ghiorso & Gualda, 2015) at 1000°C for olivine-hosted inclusions and 900°C for clinopyroxene-hosted inclusions. [B] Melt inclusion S concentration vs  $\text{K}_2\text{O}$  (errors on new melt inclusion data are smaller than symbol). Note that logarithmic Y-axis and highlighted group of embayments/groundmass glasses with relatively low S contents. MORB array data from Jenner & O'Neill (2012) and Reekie *et al.* (2019) with MORB glasses filtered at  $\text{K}_2\text{O} \leq 0.4$  wt.%. [C] Melt inclusion Cl/Nb vs F/Zr relationship, again showing tightly clustered data for each cone, and differences between the olivine- and clinopyroxene-hosted inclusions from sample TOL-16-43. Overall, melt inclusions from ZIM-16-07 show the highest Cl, F, S, and  $\text{H}_2\text{O}$  contents of all the samples analysed.

range in melt and olivine Cu contents (ca. 50–100  $\mu\text{g/g}$  and ca. 1–5  $\mu\text{g/g}$ , respectively). Incorporation of the Kamenetsky *et al.* (2017)

data for melt inclusions and host olivine from the 1941 Tolbachik eruption is also consistent with this olivine–melt partition coefficient (Supplementary Fig. 7A). Application of  $D_{\text{Cu}}^{\text{ol/melt}} = 0.028$  to the Cu contents of the moderately more evolved olivine from the high-Al, high-K cones in this study (Supplementary Fig. 3B) would therefore yield equilibrium melt Cu contents ranging from ca. 320  $\mu\text{g/g}$  to a maximum of ca. 455  $\mu\text{g/g}$ . This highest calculated melt Cu concentration is in accordance with two TOL-16-08 melt inclusions (Fig. 8) and some 2012–2013 bulk rocks. However, the majority of the melt inclusions cluster between ca. 200 to 250  $\mu\text{g/g}$  Cu, and if we calculate an apparent crystal–melt partition coefficient solely from our olivine–melt inclusion pairs, we derive a  $D_{\text{Cu}}^{\text{ol/melt}}$  of  $0.048 \pm 0.007$  (Supplementary Fig. 7A). This value is approximately twice the value of Portnyagin *et al.* (2017) and may therefore support an intrinsic difference in the  $f\text{O}_2$  conditions between these monogenetic cones and the other Kamchatkan samples on which the  $D_{\text{Cu}}^{\text{ol/melt}}$  of Portnyagin *et al.* (2017) was calibrated. The experimental data of Liu *et al.* (2014) demonstrate that  $D_{\text{Cu}}^{\text{ol/melt}}$  increases as melt oxidation state increases, effectively doubling from  $\Delta\text{QFM} +1.2$  to  $+3.8$  log units.

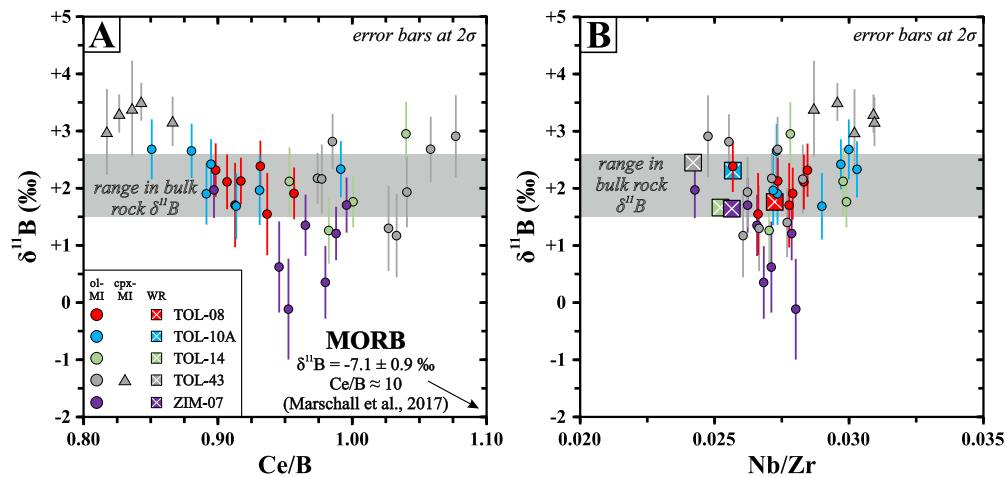
However, it is noteworthy that care must be taken when interpreting  $D_{\text{Cu}}^{\text{crystal/melt}}$  and  $D_{\text{Li}}^{\text{crystal/melt}}$  values derived from natural crystal–melt inclusion pairs. The data of Audétat *et al.* (2018) demonstrate that when stored between 900°C and 1000°C, olivine-hosted melt inclusions could fully re-equilibrate their Cu and Li contents with the surrounding melt within years to decades timescales. We suggest that such a modification process is unlikely to have completely altered the original metal budgets of these melt inclusions given almost pristine, glassy inclusions with little/no PEC (e.g. as outlined earlier in the Results section) that would be indicative of extended storage at temperatures lower than entrapment temperatures.

## DISCUSSION

### Petrogenetic context within the Tolbachik volcanic massif

The new melt inclusions reported in this study are the first integrated dataset with volatile, trace element, chalcophile, and B isotope data for the high-Al, high-K suite of Tolbachik ‘Trend 2’ monogenetic scoria cones. These data also include the first geochemical results for the northern branch of the Tolbachik monogenetic fault zone, including the compositions of samples ZIM-16-07 and TOL-16-01 from the two northerly cones that were previously chemically undescribed (Churikova *et al.*, 2015a). These data allow us to better constrain the petrogenetic context of these melts and their relationship to the other rock types produced by the Tolbachik volcanic massif.

Prior modelling has indicated that the systematic major and trace element differences between the high-Mg and high-Al suites, and middle-K (‘Trend 1’) vs high-K (‘Trend 2’) rocks, cannot be explained solely by variable extents of fractional crystallisation of the same parental magma at the same P–T– $\text{H}_2\text{O}$ – $f\text{O}_2$  conditions (Portnyagin *et al.*, 2015; Churikova *et al.*, 2015b). Sr–Nd isotope systematics have also shown that crustal contamination during magma ascent and storage plays only a very minor role in the composition of the ‘Trend 1’ rock suite (Churikova *et al.*, 2015b). Thus, the rocks of the Tolbachik massif originate from the same, variably depleted mantle source, with the primary difference between the two trends ascribed to fractional crystallisation of relatively hydrous (‘Trend 1’ (stratovolcano samples)) vs relatively anhydrous (‘Trend 2’ (dykes and monogenetic cones)) parental



**Fig. 7.** Variations in the melt inclusion and bulk rock B isotope ratio ( $\delta^{11}\text{B}$ ) with Ce/B [A], and Nb/Zr ratios [B]. Ce/B ratios are generally indicative of slab contributions to the mantle melting region, whereas Nb/Zr ratios are affected by source mantle enrichment/depletion, and/or degree of melt extraction. The limited variation in melt inclusion  $\delta^{11}\text{B}$  ( $1.9 \pm 0.7\text{‰}$ ) across all the samples analysed supports their derivation from a common, isotopically homogeneous parental melt. Overall, heavy isotope ratios are consistent with the addition of hydrous altered oceanic crust material (potentially in the form of down-dragged mantle wedge serpentinite) to an N-MORB depleted mantle composition.

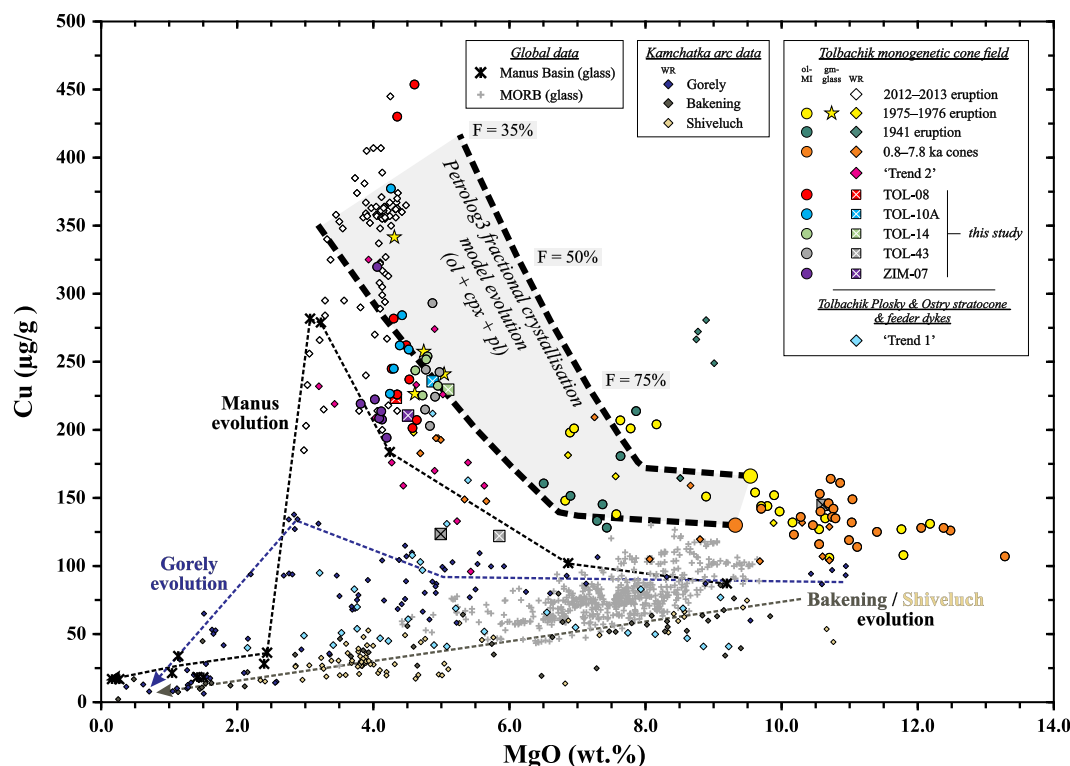
melts (Churikova *et al.*, 2015b). This fractional crystallisation-dominated regime can also explain the relationship between the melts of the 1975–1976 and 2012–2013 eruptions, where geochemical evidence suggests a common parent melt without requiring inputs from multiple sources and/or significant open-system contamination (Volynets *et al.*, 2015).

However, Portnyagin *et al.* (2015) suggest that the wider Tolbachik plumbing system is best described by an open-system model, whereby fractionation of the primary high-Mg moderate-K melts is accompanied by periodic mixing and hybridisation with fresh recharge melt. This open-system behaviour and extensive magma mixing is reflected in the eruption of disequilibrium phenocryst assemblages (Flerov *et al.*, 2015) and is consistent with the geophysical interpretations of Kugaenko & Volynets (2019). We find that the binary mixing models of Portnyagin *et al.* (2015) cannot satisfactorily explain the trend in Nb/Zr ratios vs  $\text{K}_2\text{O}$  for our new melt inclusions or prior whole rock samples. Specifically, when only higher precision SIMS and solution/laser ablation ICP-MS data for Tolbachik whole rocks and melt inclusions are considered (Figs 5B, C, E, and F), the high Nb/Zr end-member purportedly erupted in 2012–2013 rocks is not apparent. Therefore, the lack of a systematic change in the Nb/Zr ratio vs  $\text{K}_2\text{O}$  contents shown by the remaining filtered data does not support their derivation through binary mixing between a low  $\text{K}_2\text{O}$  and low Nb/Zr end-member and a high  $\text{K}_2\text{O}$  and high Nb/Zr end-member (Figs 5B, C). The ca. linear trend of Nb/Zr with  $\text{K}_2\text{O}$  is better interpreted as incremental fractional crystallisation.

We have demonstrated that some trace elements, e.g. Li, B, behave conservatively, and changes in concentration of these elements between primitive and more evolved Tolbachik rocks can be reasonably modelled by simple fractionation (Fig. 4). Furthermore, the trends in Rb/Ba vs  $\text{K}_2\text{O}$  (Fig. 5E and F) can also be broadly explained through extensive plagioclase fractionation, typifying ‘Trend 2’ rocks relative to ‘Trend 1’ rocks. Taking Rb and Ba contents similar to the average of the 1941 eruption melt inclusions (Kamenetsky *et al.*, 2017) as starting values, and assuming bulk  $D_{\text{Ba}}^{\text{mineral/melt}}$  (= 0.35) and  $D_{\text{Rb}}^{\text{mineral/melt}}$  (= 0.01) are controlled by  $\sim\text{An}_{70}$  plagioclase only (Dohmen & Blundy, 2014),  $\sim 65\text{--}70\%$  fractional crystallisation can replicate the Rb/Ba

vs  $\text{K}_2\text{O}$  values shown by the bulk rocks and melt inclusions from the high-Al high-K cone samples of ‘Trend 2’. The Sr/Y and Sr/Sm values of the 1941 melts are also commensurately higher than for these new cone samples (Supplementary Fig. 5), further evidence for plagioclase crystallisation dominating the evolution of these cone samples. Kamenetsky *et al.* (2017) conclude that the 1941 eruption melt inclusions may record aliquots of a highly heterogeneous deeper Tolbachik plumbing system, affected by both fractional crystallisation and incremental melt mixing. Our new monogenetic cone samples, on the other hand, appear to reflect a more homogenised shallow magma reservoir, prior to further fractionation to produce the 2012–2013 melt compositions.

The new trace element data for the 2012–2013 eruption melt inclusions (Plechov *et al.*, 2015; Supplementary Data A1) generally overlap with the bulk rock data from the same eruption (Volynets *et al.*, 2015), and they have Nb/Zr values effectively identical to the cone samples in this study (again confirming that the apparently high Nb/Zr end-member in literature data is likely an analytical artefact) (Fig. 5C). Other incompatible trace element ratios (La/Nb, Ba/Nb, Ce/B) in the 2012–2013 melt inclusions also overlap with the Holocene cone samples, and  $\text{CaO}/\text{Al}_2\text{O}_3$  and  $\text{MgO}/\text{Al}_2\text{O}_3$  (e.g. Fig. 3B inset) values are indistinguishable from the ZIM-16-07 cone sample specifically. The 2012–2013 inclusions have absolute  $\text{K}_2\text{O}$ , Li, and B contents consistent with a further  $\sim 25\%$  fractional crystallisation of the average cone sample melt inclusion (Fig. 4), assuming bulk crystal-melt partition coefficients ca. 0, for these components. The new cones in this study therefore reflect a slightly less evolved high-Al, high-K melt composition, similar to that from which the 2012–2013 eruption melt was derived. The lower  $\text{H}_2\text{O}$ , S (Fig. 6) and Cl/Nb (average ca.  $72 \pm 15$ ; Supplementary Data A1) in the 2012–2013 eruption samples are also evidence for additional fluid-saturated fractional crystallisation, relative to the new monogenetic cone data, potentially in a storage region at similar depths (e.g. Fig. 6A). However, we reiterate that neither the new melt inclusions in this study nor those sampled from the 2012–2013 eruption (Plechov *et al.*, 2015) were corrected for  $\text{H}_2\text{O}-\text{CO}_2-\text{S}$ -loss to shrinkage bubbles (e.g. Venugopal *et al.*, 2020) and therefore must reflect minimum entrapment pressures.

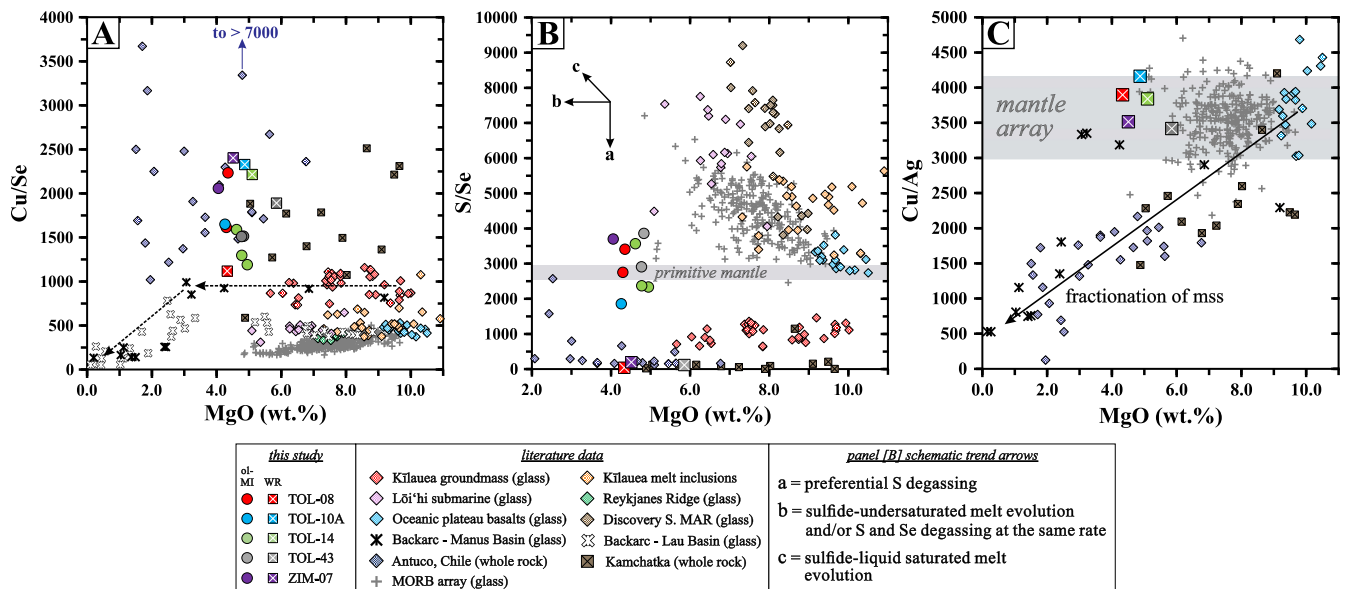


**Fig. 8.** Variations in Cu concentration vs MgO (wt.%) for a range of samples from the Tolbachik volcanic massif, along with literature data for other volcanic centres of the Kamchatka arc, Manus backarc basin, and the global MORB array. Almost all 'Trend 2' Tolbachik rocks are strongly enriched in Cu compared with other global datasets and show a generally negative relationship with MgO. However, 'Trend 1' rocks of the Plosky and Ostry stratocones are generally low Cu, similar to other Kamchatka rock suites. The thin dotted curves show best-fit evolutionary trends to the specified data series. The thick dotted curves show the results of Petrolog3 modelling of decompression fractional crystallisation for two starting melt inclusion compositions (Mironov & Portnyagin, 2018), one with Cu = 130 µg/g and one with Cu = 166 µg/g (see Section 5.4.1 for further details). The grey region shows the range of compositions produced by using each starting melt inclusion. Along the curves, F = percent melt remaining after fractional crystallisation. Representative  $D_{Cu}^{mineral/melt}$  values were specified for olivine (0.03), clinopyroxene (0.1), and plagioclase (0.02) after Liu et al. (2015) and Portnyagin et al. (2017). Note the sharp decrease in melt Cu contents recorded in the Manus backarc basin samples following magnetite-triggered sulphide saturation (Jenner et al., 2010) and a similar drop in Cu contents at similar MgO contents for Gorely volcano, apparently also triggered by magnetite saturation (Gavrilenko et al., 2016). These trends contrast with the gradual decrease in melt Cu contents recorded by MORB glasses and Bakening/Shiveluch volcanoes, indicating a role for sulphide liquid and MSS throughout melt evolution, respectively. Literature data sources as in Fig. 3 and Gorely (Gavrilenko et al., 2016); Bakening (Dorendorf et al., 2000; Iveson et al., 2021); Shiveluch (Ponomareva et al., 2015; Iveson et al., 2021); Manus backarc basin samples (Jenner et al., 2012, 2015); MORB array (Jenner & O'Neill, 2012; Reekie et al., 2019). Note, cpx-hosted inclusions and the group of low-Cu ol-hosted inclusions from TOL-16-43 have not been plotted to reduce confusion, given the likely overprinting by PEC modification.

## Boron isotope variability

Our new  $\delta^{11}B$  isotope measurements allow us to trace the involvement of a common magma source supplying the monogenetic cones. The B isotope ratio of a melt should not be fractionated during closed system evolution (consistent with incompatible crystal-melt partitioning; Fig. 4B; Kaliwoda et al., 2014; and incompatible fluid-melt partitioning in basaltic systems; Hervig et al., 2002). Given the limited influence of crustal contamination across the Tolbachik rock suites, the B isotope ratio of the melt inclusions should reflect subducted-slab contributions to the mantle source during partial melting (de Hoog & Savov, 2018). The Ce/B ratios and heavy isotopic signatures (relative to MORB values;  $\delta^{11}B = -7.1 \pm 0.9\text{‰}$ ; Marschall et al., 2017) are consistent with the addition of hydrous altered oceanic crust material (potentially in the form of down-dragged mantle wedge serpentinite) to a N-MORB depleted mantle composition (Iveson et al., 2021) and are similar to the bulk rock value measured at Tolbachik by Ishikawa et al. (2001) ( $\delta^{11}B = +3.43 \pm 0.32\text{‰}$ ; measured using a  $Cs_2BO_2$ -graphite method and thermal-ionisation mass spectrometry). The data generally overlap with the melt inclusion records at other Kamchatka volcanic centres, e.g. Klyuchevskoy, Kamen, and Shiveluch, at equivalent Ce/B values (Iveson et al., 2021).

Thus, the overall small variations in melt  $\delta^{11}B$  ( $1.9 \pm 0.7\text{‰}$ ; Fig. 7) between 35 melt inclusions from distally located cones indicates that they were supplied from an isotopically homogeneous parental magma reservoir. These new data are also in agreement with the average  $\delta^{11}B$  reported by Gurenko (2021) for naturally quenched scoria-derived melt inclusions at Tolbachik, which show  $\delta^{11}B = +2.1 \pm 2.7\text{‰}$ . The overlap between the compositions of the 1941 eruptive products (Gurenko, 2021) and the Holocene cones of this study confirms that the B isotopic ratio of the parental Tolbachik melts appears to not be significantly modified during magma evolution from the middle-K, higher-Mg basalt (1941 eruption; Fig. 3B) to the high-K, higher-Al melts in this study. However, the most northern cone (ZIM-16-07; Fig. 1B) does record three inclusions that are isotopically lighter and more than two standard deviations outside of the average of the whole dataset. While trace element ratios of this cone are consistent with the other samples (Fig. 5), the relative volatile enrichment (S, H<sub>2</sub>O, Cl/Nb; Fig. 6) tentatively suggests that this could indicate contributions from a subsidiary melt source in this region. However, a more in-depth study of the  $\delta^{11}B$  composition of the primary mantle-derived high-Mg melts would help to decipher if any isotopic heterogeneity is present before later homogenisation



**Fig. 9.** Chalcophile element trends as a function of MgO (wt.%) in the melt inclusions and bulk rocks of this study along with available literature data for melt inclusions, groundmass glasses, and bulk rocks from other Kamchatka volcanoes and other tectonic settings. [A] Cu/Se ratios; [B] S/Se ratios; [C] Cu/Ag ratios. Schematic arrows apply to panel [B] only and illustrate the broad trends expected by each process on a given data set. Data sources for literature samples included for comparison are as follows: Kīlauea and Lōi'hi glasses (Wieser *et al.*, 2020); Reykjanes Ridge (Jenner *et al.*, 2012); Oceanic plateau basalts (Reekie *et al.*, 2019); discovery southern Mid-Atlantic ridge (Lissner *et al.*, 2014); Manus and Lau backarc basin samples (Jenner *et al.*, 2012, 2015); MORB array (Jenner & O'Neill, 2012; Reekie *et al.*, 2019); Kamchatka (Iveson *et al.*, 2021); Antuco (Cox *et al.*, 2019). Primitive mantle S/Se value taken from Palme & O'Neill (2014). Note that two bulk rock Tolbachik samples are not shown in panel [B] due to S concentrations below detection limit.

to produce the high-Al monogenetic cone eruptions across the whole volcanic field.

Unlike Gurenko (2021), we do not find a  $a > 15\%$  range in B isotopes within the same sample. The extremely light values ( $\delta^{11}\text{B} \leq -9\text{‰}$ ) reported by Gurenko (2021) for experimentally rehomogenised melt inclusions from the 1941 eruption, and its correlation with  $\delta^{34}\text{S}$  only but no other major element, trace element, or volatile ratio appear to most likely have arisen due to sample processing effects: experimental rehomogenisation of melt inclusions in lavas vs naturally glassy scoria. Isotopically light values close to or lighter than MORB have only previously been described in Kamchatka at volcanic centres located in the far back-arc (Sredinny Ridge) and/or from tectonic regions with strongly reduced slab contributions (e.g. Baking volcano) (Ishikawa *et al.*, 2001; Iveson *et al.*, 2021). We find the occurrence of light B at Tolbachik to be unlikely, given the abundant evidence for high slab-derived fluid fluxes beneath this portion of the Central Kamchatka Depression (Churikova *et al.*, 2001; Portnyagin *et al.*, 2007b), and therefore the potentially anomalous results of Gurenko (2021) will not be considered further.

## Melt evolution processes at Tolbachik monogenetic cones

### Isolated magma batches after deeper mixing

The new melt inclusion suites from each individual monogenetic cone form tight clusters in major element, trace element, trace element ratio, and halogen compositional space, as do the trace elements within each olivine phenocryst population (Supplementary Fig. 3). However, they strongly overlap in their  $\delta^{11}\text{B}$  signatures, as discussed previously. We therefore interpret these trends to reflect the independent evolution of each melt batch prior to eruption, in closely situated but relatively isolated storage regions. The spread in the eruption ages of the monogenetic cones also suggest that the physical conditions

of melt storage have been relatively invariant over this period. A plumbing system with the requisite geometry beneath the Tolbachik volcanic massif has also been suggested by Kugaenko & Volynets (2019), based on quantitative seismic data. Kugaenko & Volynets (2019) demonstrate that the Tolbachik massif comprises a complicated magma plumbing system, with independent magma conduits and reservoirs, arranged in a subvertical and sublateral geometry. Additional geophysical data of Kugaenko *et al.* (2018) also demonstrate that there is a shallow magma reservoir at a depth of ca. 4–8 km, developed along the rift system from the central to the southern part of the volcanic massif. This reservoir facilitates the migration and storage of magma, after melt homogenisation at deeper levels. This depth estimate derived from geophysical methods is also in good agreement with the minimum calculated volatile saturation isobars, specifically TOL-16-43 melt inclusions (Fig. 6A).

The major element composition of the new melt inclusions, in particular average  $\text{K}_2\text{O}$  contents and correspondingly incompatible trace element concentrations, demonstrate only slight variations in the degree of fractionation for each cone (e.g. Figs. 3B inset, 4, and 5). Therefore, assuming all cones were fed from a common parental melt composition, the distinct Cl/Nb and F/Zr clusters (Fig. 6C) require variable loss of Cl and F from the melts prior to eruption. Similarly, the 1941 eruption melt inclusions (Kamenetsky *et al.*, 2017; Zelenski *et al.*, 2022) have average  $\text{H}_2\text{O}$ ,  $\text{CO}_2$ , S, F, and Cl contents higher than all melt inclusions in this study (Cl/Nb =  $912 \pm 41$ , F/Zr =  $9.9 \pm 1.4$ ), with extremely high  $\text{CO}_2$  concentrations (up to ca.  $7500 \mu\text{g/g}$ ) measured in some inclusions (Zelenski *et al.*, 2022). Both F and Cl dissolved in hydrous basaltic melts should be stable to very low pressures (0–5 MPa) (Webster *et al.*, 2018; Thomas & Wood, 2021) and halogen concentrations should increase during fluid-absent crystal fractionation due to incompatible crystal-melt partitioning affinities (e.g. Webster *et al.*, 2020, and the references therein). However, a small reduction

in the Cl dissolution capacity of the melt would accompany melt evolution (i.e. a decrease in the molar  $[Al + Na + Ca + Mg / Si]$  ratio, Webster *et al.*, 2018). The high-Mg melt inclusion data show a strong reduction in measured Cl contents as a function of increasing melt differentiation (Supplementary Fig. 8), supporting the sequestration of Cl to aqueous fluids during fractionation. However, this Cl-reduction trend flattens (or the melt inclusion suites show a slight increase) with melt differentiation for the new cones in this study, along with the 2012–2013 eruption samples (Supplementary Fig. 8). The modelling results of Webster *et al.* (2020) indicate that much greater loss of Cl to a co-existing fluid phase would be expected in systems undergoing fluid-saturated fractionation and concurrent decompression, whereas fluid-saturated evolution at fixed pressures would lead to smaller reductions in melt Cl contents. Therefore, the Cl trends in the new melt inclusions may reflect stalling of the magmas in the final shallow storage region immediately prior to eruption, combined with the effect of strong decreases in  $D_{Cl}^{fluid/melt}$  due to lower bulk Cl contents in the system, i.e. a reduction in the affinity for the fluid phase at lower total Cl (Webster *et al.*, 2018, 2020).

### Sample TOL-16-43: are olivine- and clinopyroxene-hosted melt inclusions genetically related?

The Peschanye Gorki cone (sample TOL-16-43) is one of the few monogenetic cones to erupt both high-Mg and high-Al melts (Portnyagin *et al.*, 2015). Based on the total alkali contents and  $MgO/Al_2O_3$  ratios of the ol-hosted melt inclusions, they are the most primitive samples in this study (Fig. 3). Conversely, the cpx-hosted inclusions from the same sample are the most evolved, with strongly incompatible trace element concentrations, e.g. B and Rb, suggesting ~50% fractional crystallisation relative to the ol-hosted melts (Section 4.3.2; Supplementary Fig. 6). The average mol.  $Mg/(Mg + Fe_{TOT})$  ratio of the clinopyroxene phenocrysts from TOL-16-43 is  $0.74 \pm 0.01$ , which is only slightly lower than the olivine phenocrysts from the same sample ( $0.76 \pm 0.01$ ) (Table 1). Assuming that clinopyroxene and olivine with approximately the same Mg# will be in equilibrium in hydrous basaltic melts, this likely indicates co-crystallisation of both phenocryst phases. However, this is difficult to reconcile with the major and trace element concentrations, and volatile contents, of the melt inclusions within each phase.

While  $H_2O$  concentrations in a melt inclusion may re-equilibrate rapidly with a degassed carrier melt across a clinopyroxene crystal (e.g. Lloyd *et al.*, 2016), diffusive re-equilibration of Cl and F should be negligible. Both  $H_2O$  and  $CO_2$  contents of the cpx-hosted inclusions are degassed relative to ol-hosted inclusions, but Cl and F concentrations are moderately elevated. They are not, however, enriched to the concentrations expected from ~50% fluid-absent crystal fractionation that is indicated by other incompatible trace elements. Therefore, as discussed in the previous section, some loss of Cl ( $\pm$  F) to a co-existing volatile phase seems necessary to explain the Cl/Nb and F/Zr ratios of the clinopyroxene melts. No ol-hosted melt inclusion overlaps with any cpx-hosted melt inclusion in  $H_2O$ – $CO_2$  content (Fig. 6A) so if the cpx-hosted inclusions are indeed recording late-stage storage at <50 MPa pressure, the volatile contents of the ol-hosted inclusions have not re-equilibrated to these conditions.

Thus, as discussed by Lloyd *et al.* (2016), two scenarios may explain the lack of overlap between compositions of ol- and cpx-hosted melt inclusions erupted from the same cone. Either the phenocrysts are derived from unique melts that are crystallising at different depths and subsequently mixed prior to eruption or the phenocrysts are preferentially trapping samples of the

same melt that is undergoing decompression-driven crystallisation, leading to a decrease in volatile concentrations (e.g. Fig. 6). On average the  $\delta^{11}B$  ratios of the cpx-hosted inclusions are moderately heavier (~1‰) than the ol-hosted inclusions (Fig. 7) and may thus support the first scenario, indicating contributions from a different melt composition, albeit one with similar incompatible trace element ratios (Fig. 5C and F). Conversely, an additional consideration arises from the morphology of the melt inclusions within the clinopyroxene crystals. The more elongate and faceted 2-D shapes (e.g. Supplementary Fig. 4) suggest they were preferentially trapped along bands or melt channels within the phenocrysts and potentially experienced greater post-entrapment modification. Given the homogeneity in volatile contents, trace element ratios of the inclusions, and trace element contents of the host clinopyroxene phenocrysts, it is likely they were all trapped at the same stage during melt evolution. Speculatively, in the latter scenario, if a late-stage perturbation to the magma storage region triggered rapid crystallisation prior to eruption, it may also have led to boundary layer enrichment during melt inclusion entrapment, in particular more slowly diffusing major and trace elements (e.g.  $P_2O_5$ , Ba). Ultimately, if olivine and clinopyroxene were indeed cotectic, we suggest that late-stage syn-eruptive entrapment of more fractionated melts in clinopyroxene only (and followed by more PEC modification) is the most reasonable explanation for the compositional differences outlined in this section.

### Chalcophile element systematics Tolbachik and global data: discriminating sulphide-saturated vs sulphide-undersaturated evolution and mantle melting?

In order to interpret the behaviour of chalcophile elements in the Tolbachik monogenetic cone and fissure system, we compare and contrast our new data with other global magmatic trends. This allows us to distinguish three broad end-member scenarios, as defined by different datasets.

The first scenario is defined by the MORB array and exemplified by some of the Kamchatka volcanic suites (e.g. Bakening and Shiveluch). All three of these datasets demonstrate a downward trajectory of melt Cu contents with decreasing MgO (Fig. 8). This behaviour is consistent with the sulphide-saturated evolution of the magmas, as Cu is highly compatible in sulphide phases (e.g. Ripley *et al.*, 2002; Jenner *et al.*, 2010). In the case of MORB, the melts are relatively reduced, and contain sufficiently high S and Fe concentrations to become saturated with respect to a sulphide liquid during early stages of evolution (e.g. Mathez, 1976; Jenner, 2017). In the case of Bakening, recent modelling by Deng *et al.* (2022) confirms that low degrees of melting at low  $fO_2$  conditions (ca.  $\Delta QFM \leq +1$ ) will leave residual mantle sulphides, and thus magmas will be sulphide-saturated at an early stage of magma differentiation in the crust.

The nature of the stable sulphide phases fractionating from MORB and convergent margin magmas can be determined by examining Cu/Ag systematics during magma differentiation (Fig. 9C). This is because sulphide melt shows equal compatibility for both Cu and Ag, whereas monosulfide solid solution (MSS) favours Cu over Ag (Jenner *et al.*, 2010; Li & Audétat, 2012). MORB glasses show a decrease in Cu and constant Cu/Ag with decreasing MgO (Fig. 9c), which is consistent with sulphide melt fractionation. The concomitant decrease in melt Cu contents and Cu/Ag during differentiation of convergent margin magmas is instead indicative of exsolution of MSS (Jenner *et al.*, 2010; Li & Audétat, 2012). This behaviour is shown by Antuco (Chile), and

other Kamchatka samples, spanning a range of MgO contents. Indeed, recent modelling and interpretation of global Cu data reveals that most primitive arc magmas likely undergo pervasive sulphide-saturation, facilitated in particular by temperature–pressure– $f_{O_2}$  conditions that favour Fe-depleting amphibole and occasionally garnet fractionation (Barber *et al.*, 2021), lowering melt S solubility. This commonality is further supported by the ubiquitous preservation of sulphide inclusions (crystalline and polymineralic, with a Cu-rich and Cu-poor phase) in phenocrysts from Ecuadorian volcanic centres, spanning a wide compositional range from basalt to dacite (Georgatou *et al.*, 2018).

The second broad scenario is where magmas are initially sulphide-undersaturated, which is likely because of either the high  $f_{O_2}$  of the source (S solubility increases with increasing  $f_{O_2}$ ) or the high melt fraction during melting (Deng *et al.*, 2022, and the references therein). These sulphide under-saturated convergent margin magmas show an initial increase in Cu with decreasing MgO, until the melts eventually reach sulphide saturation (Jenner *et al.*, 2010, 2015). For example, backarc basin magmas from the Eastern Manus basin show an initial increase in Cu with decreasing MgO and constant Cu/Se until sulphide saturation is reached at  $\sim 3$  wt.% MgO. Sulphide saturation in these melts is triggered by the appearance of magnetite on the liquidus, which leads to a decrease in melt FeO content and a reduction in the sulphur species from sulphate to sulphide (Jenner *et al.*, 2010). Consequently, Eastern Manus Basin magmas with  $< 3$  wt.% MgO show a decrease in Cu, Cu/Ag and Cu/Se with decreasing MgO (Fig. 9C), which is attributable to MSS fractionation. The effect of magnetite-triggered sulphide saturation is also displayed by the data of Gavrilenko *et al.* (2016) for Gorely volcano, Kamchatka (Fig. 8).

The final scenario is applicable to rocks of the Tolbachik monogenetic cone field (i.e. ‘Trend 2’ rocks). Primitive high-Mg melts produced, for example during the 1975–1976 eruption and at other Holocene monogenetic cones (Portnyagin *et al.*, 2015; Mironov & Portnyagin, 2018), show high initial Cu concentrations (ranging from 106 to 166  $\mu\text{g/g}$ , with an average of 135  $\mu\text{g/g}$ ) for rocks with MgO  $> 9$  wt.% (Fig. 8). Concentrations spanning to 166  $\mu\text{g/g}$  Cu are notably higher than average primitive MORB melts, which have only ca. 115  $\mu\text{g/g}$  Cu (Jenner, 2017). Modelling of mantle melting conducted by Mironov & Portnyagin (2018) showed that the elevated Cu (and S) concentrations in these primary Tolbachik melts may be achieved by melting of the same mantle source, but under more oxidising conditions for Tolbachik ( $\Delta\text{QFM} + 1.1$ – $1.3$  log units) relative to MORB ( $\Delta\text{QFM} \leq 0$ ), and in both cases in the presence of residual sulphide. However, if melting was in the presence of sulphide, it is unclear why the 1975–1976 eruption and other Tolbachik magmas were sulphide-undersaturated and show a pronounced increase in Cu with decreasing MgO (Fig. 8). In contrast, Deng *et al.* (2022) recently showed that such high Cu in primitive magmas requires mantle sulphide to be exhausted during melting. Importantly, Deng *et al.* (2022), used S and Cu concentrations that were applicable to melting of primitive (200  $\mu\text{g/g}$  S and 20  $\mu\text{g/g}$  Cu) through to depleted mantle (120  $\mu\text{g/g}$  S and 17.6  $\mu\text{g/g}$  Cu), whereas Mironov & Portnyagin (2018) used initial starting compositions that had significantly higher S (200–300  $\mu\text{g/g}$ ) and Cu (30  $\mu\text{g/g}$ ) than even the primitive mantle. Application of the Deng *et al.* (2022) model to the arc magmas of the Tolbachik massif, at representative conditions of  $f_{O_2} = \Delta\text{QFM} + 1.1$ – $1.5$  and melting degrees of ca. 8%–11% (e.g. Mironov & Portnyagin, 2018; Iveson *et al.*, 2021), demonstrates that mantle melting would exhaust residual sulphide, generating sulphide-undersaturated Cu-rich melts.

Following melt generation at Tolbachik, Cu contents increase as melts become increasingly fractionated and reach maximum Cu contents of ca. 450  $\mu\text{g/g}$  at MgO  $\approx 4$  wt.% (Fig. 8). This unusual Cu-enrichment behaviour requires that Tolbachik melts do not saturate in a sulphide phase at any point during magmatic evolution (likely because the magmas do not reach magnetite saturation prior to eruption) and that bulk Cu partitioning behaviour remains incompatible throughout crystallisation. Notably, most of the whole rock and melt inclusion data for monogenetic cones that were analysed in this study show similar behaviour (Fig. 8). Importantly, unlike other Kamchatka data that show a decrease in Cu/Ag that is consistent with MSS fractionation, our new Tolbachik whole rock analyses overlap the range in Cu/Ag shown by the MORB array (Fig. 9C). This trend is consistent with our interpretation that the magmas were sulphide-(MSS) undersaturated during differentiation. Unfortunately, given the general lack of melts erupted from the Tolbachik monogenetic field with less than ca. 4 wt.% MgO, there is no information about the later evolutionary trends of these Cu-rich melts, as compared with other systems where post-magnetite-triggered sulphide saturation trends are discernible, e.g. the Manus basin (e.g. Fig. 8; Jenner *et al.*, 2010).

Previous studies have demonstrated that increases in Cu with decreasing MgO can be attributed to degassing-related dissolution of sulphides during magma evolution (i.e. dissolution of the sulphides that were in contact with the melt, but not those that were hosted as inclusions in minerals) and consequent partitioning of Cu, Ag, and Se from the sulphides back into the melt (Reekie *et al.*, 2019). In this scenario, Cu is not expected to mimic perfectly incompatible behaviour because the proportion of sulphide that was fractionated from the melts (i.e. the proportion that remains in an underlying mush zone) and the proportion of sulphide that was trapped as inclusions in minerals would not be in contact with the degassing melt to be able to redissolve. As a hypothetical exercise, we have used Petrolog3 (Danyushesky & Plechov, 2011) to simulate sulphide-free fractional crystallisation (ol + cpx + plag; 75% fractionation) and concurrent decompression (700 MPa to 300 MPa,  $\delta P/\delta T = 20$  bars per  $1^\circ\text{C}$ ) at  $f_{O_2} = \text{QFM} + 1.5$  log units (representative of the CKD in general; Nekrylov *et al.*, 2018), for two starting melt compositions. We use two melt inclusions from Mironov & Portnyagin (2018); one with 130  $\mu\text{g/g}$  Cu and one with 166  $\mu\text{g/g}$  Cu, with similar MgO contents (ca. 9.5 wt.%). In this model, bulk  $D_{\text{Cu}}^{\text{min/melt}}$  is close to 0, and Fig. 8 (thick dotted curves) shows that between ca. 40 to 65% fractional crystallisation of these starting composition is required to explain the high Cu contents recorded by some 2012–2013 eruption samples and melt inclusions in this study. Depending on the initial Cu concentration for each sample, the simple model can broadly replicate the overall shape of the Cu vs MgO trend for the whole Tolbachik suite, and the spread in Cu contents in lower-Mg rocks can largely be enveloped by the two end-member model trends. Hence, the simplest explanation for the trend to extremely high Cu of the Tolbachik samples, together with their high initial Cu, is that the melts were sulphide-undersaturated during differentiation and that loss of S during degassing simply made the magmas even more unlikely to reach sulphide saturation during further differentiation.

Finally, we emphasise that the new data here cannot further discriminate the main processes controlling the difference in chalcophile metal behaviour between our ‘Trend 2’ rocks (monogenetic scoria-lava cones and fissures) and the ‘Trend 1’ rocks (Tolbachik central stratocone). The ‘Trend 1’ rocks show little evidence for anomalous Cu-enrichment (Fig. 8; Churikova *et al.*,

2015b) and are similar to other closely situated volcanoes in the Central Kamchatka Depression (e.g. Klyuchevskoy and Kamen) and must indicate sulphide-saturated fractionation. The exact reason for the change in Cu systematics during tectonic evolution from older stratocone volcanism to more recent monogenetic cone and fissure eruptions remains enigmatic and is ultimately beyond the scope of this study. Speculatively, the increase in Cu concentrations between these time intervals, together with the shift from differentiation of sulphide-saturated (decreasing Cu with decreasing MgO) to sulphide-undersaturated melts (increase in Cu with decreasing MgO) might be suggestive of an increase in mantle  $fO_2$  or a decrease in mantle fertility (required to exhaust sulphide during the most recent episodes of magmatism).

### Tracing selenium behaviour

To our knowledge, there are currently no comparable Se data for arc-derived melt inclusion glasses and Se data for arc rocks in general are currently scarce. Our new data show that for all but one of the monogenetic cones (TOL-16-08), the whole-rock Se concentrations are lower than those measured in the corresponding melt inclusions (Supplementary Table 1). Similarly, the whole rock data show higher Cu/Se compared with the melt inclusions (Fig. 9a). These data indicate the overall loss of Se from groundmass glasses, relative to melt inclusions, because the melt inclusions were shielded from external degassing. This trend is consistent with the other comparable datasets for arc bulk rocks measured by Cox *et al.* (2019) from Antuco volcano, Chile, and Iveson *et al.* (2021) for other Kamchatka volcanoes. These two comparable datasets both show very low S and Se concentrations relative to the MORB array, and S/Se ratios generally much lower than ca. 1000. These trends are interpreted to reflect low-pressure degassing of both these elements during eruption, and the preferential loss of S relative to Se. However, at Tolbachik it also appears that S and Se are degassing at the same rate during magmatic storage, as indicated by the high-Al melt inclusions: the S/Se of the inclusions overlap with primitive mantle values (Fig. 9b), which is consistent with the exhaustion of mantle sulphide during mantle melting (e.g. Reekie *et al.*, 2019; Deng *et al.*, 2022; this section). We caution that only further targeted Se analyses of higher-Mg and higher-S melt inclusions and groundmass glasses from primitive Tolbachik rocks will be able to fully decipher the behaviour of Se during melt evolution at the Tolbachik monogenetic cone field.

### Sulphide immiscibility in the 1941 eruption and at cone 'Mt. 1004'

One final outstanding question is how the extremely sulphide-rich olivine samples from the 1941 eruption and cone 'Mt. 1004' are consistent with this petrogenetic model for sulphide-absent evolution of the Tolbachik massif. There is abundant evidence that some primitive melt batches in the Tolbachik monogenetic cone plumbing system are not sulphide-free. For example, silicate-sulphide liquid immiscibility in primitive melts, even under oxidising conditions ( $fO_2 \approx QFM + 1$  to  $+1.5$ ), has been investigated by Zelenski *et al.* (2018, 2022) and Kamenetsky *et al.* (2017). These authors describe densely concentrated immiscible sulphide droplets from separate monogenetic cones (the 1941 eruption and cone 'Mt. 1004'), and which occur exclusively as inclusions in olivine phenocrysts, with none found in the coexisting groundmass (Zelenski *et al.*, 2017). Such petrographic textures imply that any sulphides that were not trapped as isolated inclusions must therefore have dissolved during either the ascent of magmas or as a result of wider melt degassing of sulphur.

Several uncertainties surrounding their origins remain, for example why these samples specifically undergo localised, heterogeneous saturation in an immiscible sulphide liquid, despite the oxidising conditions (e.g. Kamenetsky *et al.*, 2017; Zelenski *et al.*, 2018, 2022), and the origins of the 'excess' sulphur required to trigger such pervasive sulphide saturation (Zelenski *et al.*, 2022). Furthermore, it is counterintuitive that the Cu contents of the olivine-hosted melt inclusions co-entrapped with sulphide inclusions from these samples are comparable to Cu contents in glasses from other sulphide-free Tolbachik melts at equivalent MgO contents (e.g. Fig. 8). We therefore conclude that while several models have explored the importance of sulphide melt resorption and chalcophile metal release back into an accompanying silicate melt (e.g. Kerr & Leitch, 2005; Reekie *et al.*, 2019; Wieser *et al.*, 2020, Chen *et al.*, 2021; Holwell *et al.*, 2022), we currently do not have the necessary data to decipher any contributions from this process to the compositions of these unusual Tolbachik samples. Thus, we suggest that the simpler model for sulphide-undersaturated evolution across the entirety of the compositional range of the new monogenetic cone melts analysed in this study is the most likely explanation for the trends discussed here.

## CONCLUSIONS

Our new detailed geochemical investigation of melt inclusions from the Tolbachik monogenetic field contribute to our understanding of melt generation and evolution in this intra-arc rift zone, which is characterised by high melt production and eruption of magmas with contrasting major and trace element signatures. We have demonstrated the following.

- 1) The major and trace element compositions of the new high-Al monogenetic cone melt inclusions are most satisfactorily explained through protracted fractional crystallisation processes, following derivation from a more primitive melt composition resembling those erupted during the 1941 or 1975–1976 eruptions. The 2012–2013 eruption melts are some of the most fractionated melts measured in the Tolbachik massif, but Nb/Zr values are indistinguishable from the new monogenetic cone samples.
- 2) Tightly clustered  $\delta^{11}B$  ratios of the melt inclusions suggest that each cone was fed from a common, isotopically homogeneous parental source melt. Furthermore,  $\delta^{11}B$  ratios of naturally quenched melt inclusions from the 1941 eruption overlap the new data for the high-Al cones, supporting their derivation from a similar mantle source.
- 3) Overall, the relatively heavy  $\delta^{11}B$  values ( $\delta^{11}B = 1.9 \pm 0.7\%$ ) are consistent with the position of the volcanic massif relative to the depth of the subducting slab and with contributions from hydrous altered oceanic crust material to a N-MORB depleted mantle wedge composition (e.g. Liu *et al.*, 2020; Iveson *et al.*, 2021). Bulk rock  $\delta^{11}B$  values also consistently reflect the average  $\delta^{11}B$  of the corresponding melt inclusion suite.
- 4)  $H_2O-CO_2$  contents indicate minimum storage pressures ranging from ca. 50 to 200 MPa, and the southern Peschaney Gorki cone records some of the highest  $CO_2$  contents measured in the high-Al suite (up to ca. 1200  $\mu g/g$ ). These volatile concentrations are consistent with geophysical evidence for a shallow magma reservoir at a depth of ca. 4–8 km (e.g. Kugaenko *et al.*, 2018).

- 5) Halogen (Cl/Nb and F/Zr) ratios are strongly correlated and clustered for each cone, demonstrating isolated melt evolution beneath each cone prior to eruption. Chlorine, F, and S abundances are lower in the high-Al melts relative to more primitive high-Mg melts, indicating a role for fluid-saturated evolution and volatile degassing during decompression, fractionation, and storage.
- 6) A comparison of olivine- and clinopyroxene-hosted melt inclusions from the same sample show compositional differences requiring ~50% fractional crystallisation, whereas host phenocrysts are apparently close to equilibrium with each other. This discrepancy likely results from the entrapment of more fractionated melt compositions pre- or syn-eruption, followed by more extensive post-entrapment modification of the clinopyroxene-hosted melt inclusions.
- 7) The new monogenetic cone melt inclusions are not anomalously S-rich, but contain some of the highest Cu contents measured in any arc melt with 3–4 wt.% MgO. Despite evidence for early sulphide saturation in some anomalous Tolbachik melts, Cu contents continue to increase with melt evolution. We have shown that this trend requires melts to evolve under sulphide-undersaturated conditions across a range of MgO contents, relative to other global datasets and Kamchatka volcanoes where the formation of an immiscible MSS is clearly distinguished by fractionation of Cu/Ag ratios.
- 8) Novel analysis of Se in the melt inclusions demonstrates that during shallow storage and degassing initial S and Se concentrations may be modified. However, S/Se values that overlap with primitive mantle signatures require mantle melting to exhaust residual sulphides, followed by melt degassing of both of these elements at the same rate from the melt.
- 9) Further targeted Se and Ag analysis of the primitive high-Mg and high-S melt inclusions from both sulphide-bearing and sulphide-free monogenetic cone eruptions would be key in unravelling any contributions from sulphide melt resorption and chalcophile metal release in the Tolbachik plumbing system (e.g. Holwell *et al.*, 2022).

## Acknowledgements

A.A.I. is grateful for the assistance of P. Wieser with the VESICAL modelling calculations and discussions surrounding the chalcophile metal data for Kilauea. We also appreciate contributions by T. Mather and D. Pyle towards grant administration and management, E. Melekhova for providing unpublished SIMS data, and several volunteers who worked on Tolbachik: Elena Matveeva, Vladimir Belenikin, Alexander Larionov, and rescuer Mikhail Yarin. Finally, we appreciate the constructive comments and suggestions from three anonymous reviewers that helped clarify the interpretations in this manuscript, as well as editorial handling by A. Audétat.

## Funding

This work was funded by the Natural Environment Research Council (NERC) Mantle Volatiles (NE/M000303/1) and SIMS analysis at the Edinburgh Ion Microprobe Facility was supported by NERC (IMF 637/1017). F.E.J. and B.E.K. acknowledge funding from the NERC From Arc Magmas to Ore Systems (NE/PO17045/1) grant. T.G.C. and B.N.G. were funded by the RFBR 16-55-12040 and 20-55-50001 and a St Mary's College scholarship at Durham University. A.A.I. acknowledges support from the Leverhulme Trust through an early career fellowship.

## Data Availability

The data underlying this article are available in the article and in its online supplementary material.

## Supplementary Data

Supplementary data are available at *Journal of Petrology* online.

## References

- Audétat, A., Zhang, L. & Ni, H. (2018). Copper and Li diffusion in plagioclase, pyroxenes, olivine and apatite, and consequences for the composition of melt inclusions. *Geochimica et Cosmochimica Acta* **243**, 99–115. <https://doi.org/10.1016/j.gca.2018.09.016>.
- Barber, N. D., Edmonds, M., Jenner, F., Audétat, A. & Williams, H. (2021). Amphibole control on copper systematics in arcs: insights from the analysis of global datasets. *Geochimica et Cosmochimica Acta* **307**, 192–211. <https://doi.org/10.1016/j.gca.2021.05.034>.
- Belousov, A., Belousova, M., Edwards, B., Volynets, A. & Melnikov, D. (2015). Overview of the precursors and dynamics of the 2012–13 basaltic fissure eruption of Tolbachik volcano, Kamchatka, Russia. *Journal of Volcanology and Geothermal Research* **307**, 22–37. <https://doi.org/10.1016/j.jvolgeores.2015.06.013>.
- Borisov, A. & Shapkin, A. I. (1990). New empirical equation rating  $Fe^{3+}/Fe^{2+}$  in magmas to their composition, oxygen fugacity, and temperature. *Geochemistry International* **27**(1), 111–116. <https://doi.org/https://www.researchgate.net/publication/285981831>.
- Braitseva, O. A., Melekestsev, I. V., Flerov, G. B., Ponomareva, V. V., Sulerzhitsky, L. D. & Litasova, S. N. (1984). Holocene volcanism of the Tolbachik regional zone of cinder cones. In: Fedotov S. A. (ed) *Large Tolbachik Fissure Eruption, Kamchatka, 1975–1976*. Moscow: Nauka, pp.177–223 (in Russian).
- Brenna, M., Cronin, S. J., Németh, K., Smith, I. E. M. & Sohn, Y. K. (2011). The influence of magma plumbing complexity on monogenetic eruptions, Jeju Island, Korea. *Terra Nova* **23**, 70–75. <https://doi.org/10.1111/j.1365-3121.2010.00985.x>.
- Bucholz, C. E., Gaetani, G. A., Behn, M. D. & Shimizu, N. (2013). Post-entrapment modification of volatiles and oxygen fugacity in olivine-hosted melt inclusions. *Earth and Planetary Science Letters* **374**, 145–155. <https://doi.org/10.1016/j.epsl.2013.05.033>.
- Chen, Z., Zeng, Z., Tamehe, L. S., Wang, X., Chen, K., Yin, X., Yang, W. & Qi, H. (2021). Magmatic sulfide saturation and dissolution in the basaltic andesitic magma from the Yaeyama central graben, southern Okinawa trough. *Lithos* **388–389**, 106082. <https://doi.org/10.1016/j.lithos.2021.106082>.
- Chiarradia, M. (2014). Copper enrichment in arc magmas controlled by overriding plate thickness. *Nature Geoscience* **7**, 43–46. <https://doi.org/10.1038/ngeo2028>.
- Churikova, T., Dorendorf, F. & Wörner, G. (2001). Sources and fluids in the mantle wedge below Kamchatka, evidence from across-arc geochemical variation. *Journal of Petrology* **42**, 1567–1593. <https://doi.org/10.1093/petrology/42.8.1567>.
- Churikova, T. G., Gordeychik, B. N., Edwards, B. R., Ponomareva, V. V. & Zelenin, E. A. (2015a). The Tolbachik volcanic massif: a review of the petrology, volcanology and eruption history prior to the 2012–2013 eruption. *Journal of Volcanology and Geothermal Research* **307**, 3–21. <https://doi.org/10.1016/j.jvolgeores.2015.10.016>.
- Churikova, T. G., Gordeychik, B. N., Iwamori, H., Nakamura, H., Ishizuka, O., Nishizawa, T., Haraguchi, S., Miyazaki, T. & Vaglarov, B. S. (2015b). Petrological and geochemical evolution of the Tolbachik volcanic massif, Kamchatka, Russia. *Journal of Volcanology and Geothermal Research* **307**, 156–181. <https://doi.org/10.1016/j.jvolgeores.2015.10.026>.

- Cox, D., Watt, S. F. L., Jenner, F. E., Hastie, A. R. & Hammond, S. J. (2019). Chalcophile element processing beneath a continental arc stratovolcano. *Earth and Planetary Science Letters* **522**, 1–11. <https://doi.org/10.1016/j.epsl.2019.06.017>.
- Danyushevsky, L. V. (2001). The effect of small amounts of H<sub>2</sub>O on crystallisation of midocean ridge and backarc basin magmas. *Journal of Volcanology and Geothermal Research* **110**, 265–280. [https://doi.org/10.1016/S0377-0273\(01\)00213-X](https://doi.org/10.1016/S0377-0273(01)00213-X).
- Danyushevsky, L. V. & Plechov, P. (2011). Petrolog3: integrated software for modelling crystallization processes. *Geochemistry, Geophysics, Geosystems* **12**, Q07021. <https://doi.org/10.1029/2011GC003516>.
- Danyushevsky, L. V., Della-Pasqua, F. N. & Sokolov, S. (2000). Re-equilibration of melt inclusions trapped by magnesian olivine phenocrysts from subduction-related magmas: petrological implications. *Contributions to Mineralogy and Petrology* **138**, 68–83. <https://doi.org/10.1007/PL00007664>.
- Deng, C., Jenner, F. E., Wan, B. & Li, J.-L. (2022). The influence of ridge subduction on the geochemistry of Vanuatu arc magmas. *Journal of Geophysical Research: Solid Earth* **127**, e2021JB028283. <https://doi.org/10.1029/2021JB028283>.
- Dohmen, R. & Blundy, J. (2014). Predictive thermodynamic model for element partitioning between plagioclase and melt as a function of pressure, temperature and composition. *American Journal of Science* **314**, 1319–1372. <https://doi.org/10.2475/09.2014.04>.
- Dorendorf, F., Churikova, T. G., Koloskov, A. & Wörner, G. (2000). Late Pleistocene to Holocene activity at Bakening volcano and surrounding monogenetic centers (Kamchatka): volcanic geology and geochemical evolution. *Journal of Volcanology and Geothermal Research* **104**, 131–151. [https://doi.org/10.1016/S0377-0273\(00\)00203-1](https://doi.org/10.1016/S0377-0273(00)00203-1).
- Flerov, G. B., Anan'ev, V. V. & Ponomarev, G. P. (2015). The petrogenesis of rocks of the Ostryi and Ploskii volcanoes and the relationship between volcanic occurrences of basaltic and trachybasaltic magmas in the Tolbachik Dol area, Kamchatka. *Journal of Volcanology and Seismology* **9**, 162–181. <https://doi.org/10.1134/S0742046315030021>.
- Flerov, G. B., Andreev, V. N., Budnikov, V. A. & Tsyurupa, A. I. (1984). Petrology of the eruption products. In: Fedotov S. A. (ed) *Great Tolbachik Fissure Eruption, Kamchatka, 1975–1976*. Moscow: Nauka, pp.223–284 (in Russian).
- Gaetani, G., O'Leary, J. A., Shimizu, N., Bucholz, C. E. & Newville, M. (2012). Rapid reequilibration of H<sub>2</sub>O and oxygen fugacity in olivine-hosted melt inclusions. *Geology* **40**, 915–918. <https://doi.org/10.1130/G32992.1>.
- Gavrilenko, M., Ozerov, A., Kyle, P. R., Carr, M. J., Nikulin, A., Vidito, C. & Danyushevsky, L. (2016). Abrupt transition from fractional crystallization to magma mixing at Gorely volcano (Kamchatka) after caldera collapse. *Bulletin of Volcanology* **78**, 47. <https://doi.org/10.1007/s00445-016-1038-z>.
- Georgatou, A., Chiaradia, M., Rezeau, H. & Wälle, M. (2018). Magmatic sulphides in quaternary Ecuadorian arc magmas. *Lithos* **296–299**, 580–599. <https://doi.org/10.1016/j.lithos.2017.11.019>.
- Ghiorso, M. & Gualda, G. (2015). An H<sub>2</sub>O-CO<sub>2</sub> mixed fluid saturation model compatible with rhyolite-MELTS. *Contributions to Mineralogy and Petrology* **169**, 1–30. <https://doi.org/10.1007/s00410-015-1141-8>.
- Grant, K. J. & Wood, B. J. (2010). Experimental study of the incorporation of Li, Sc, Al and other trace elements into olivine. *Geochimica et Cosmochimica Acta* **74**, 2412–2428. <https://doi.org/10.1016/j.gca.2010.01.015>.
- Gurenko, A. A. (2021). Origin of Sulphur in relation to silicate-sulphide immiscibility in Tolbachik primitive arc magma (Kamchatka, Russia): insights from sulphur and boron isotopes. *Chemical Geology* **576**, 120244. <https://doi.org/10.1016/j.chemgeo.2021.120244>.
- Hervig, R. L., Moore, G. M., Williams, L. B., Peacock, S. M., Holloway, J. R. & Roggensack, K. (2002). Isotopic and elemental partitioning of boron between hydrous fluid and silicate melt. *American Mineralogist* **87**, 769–774. <https://doi.org/10.2138/am-2002-5-620>.
- Holwell, D. A., Fiorentini, M. L., Knott, T. R., McDonald, I., Blanks, D. E., McCuaig, T. C. & Gorczyk, W. (2022). Mobilisation of deep crustal sulfide melts as a first order control on upper lithospheric metallogeny. *Nature Communications* **13**, 573. <https://doi.org/10.1038/s41467-022-28275-y>.
- de Hoog, J. C. M. & Savov, I. P. (2018). Boron isotopes as a tracer of subduction zone processes. In: Marschall H. & Foster G. (eds) *Boron Isotopes*. Cham: Springer, p.217.
- de Hoog, J. C. M., Mason, P. R. D. & van Bergen, M. J. (2001). Sulfur and chalcophile elements in subduction zones: constraints from a laser ablation ICP-MS study of melt inclusions from Galunggung volcano, Indonesia. *Geochimica et Cosmochimica Acta* **65**, 3147–3164. [https://doi.org/10.1016/S0016-7037\(01\)00634-2](https://doi.org/10.1016/S0016-7037(01)00634-2).
- Iacovino, K., Matthews, S., Wieser, P. E., Moore, G. M. & Begue, F. (2021). VESICAL part I: an open-source thermodynamic model engine for mixed volatile (H<sub>2</sub>O-CO<sub>2</sub>) solubility in silicate melts. *Earth and Space Sciences* **8**, e2020EA001584. <https://doi.org/10.1029/2020EA001584>.
- Ishikawa, T., Tera, F. & Nakazawa, T. (2001). Boron isotope and trace element systematics of the three volcanic zones in the Kamchatka arc. *Geochimica et Cosmochimica Acta* **65**, 4523–4537. [https://doi.org/10.1016/S0016-7037\(01\)00765-7](https://doi.org/10.1016/S0016-7037(01)00765-7).
- Iveson, A. A., Humphreys, M. C. S., Savov, I. P., de Hoog, J. C. M., Turner, S. J., Churikova, T. G., Macpherson, C. G., Mather, T. A., Gordeychik, B. N., Tomanikova, L., Agostini, S., Hammond, K., Pyle, D. M. & Cooper, G. F. (2021). Deciphering variable mantle sources and hydrous inputs to arc magmas in Kamchatka. *Earth and Planetary Science Letters* **562**, 116848. <https://doi.org/10.1016/j.epsl.2021.116848>.
- Jenner, F. E. (2017). Cumulate causes for the low contents of sulfide-loving elements in the continental crust. *Nature Geoscience* **10**, 524–529. <https://doi.org/10.1038/ngeo2965>.
- Jenner, F. E. & O'Neill, H. S. C. (2012). Analysis of 60 elements in 616 ocean floor basaltic glasses. *Geochemistry, Geophysics, Geosystems* **13**, Q02005. <https://doi.org/10.1029/2011GC004009>.
- Jenner, F. E., O'Neill, H. S. C., Arculus, R. J. & Mavrogenes, J. A. (2010). The magnetite crisis in the evolution of arc-related magmas and the initial concentration of Au, Ag, and Cu. *Journal of Petrology* **51**, 2445–2464. <https://doi.org/10.1093/petrology/egq063>.
- Jenner, F. E., Arculus, R. J., Mavrogenes, J. A., Dyrw, N. J., Nebel, O. & Hauri, E. H. (2012). Chalcophile element systematics in volcanic glasses from the northwestern Lau Basin. *Geochemistry, Geophysics, Geosystems* **13**, Q06014. <https://doi.org/10.1029/2012GC004088>.
- Jenner, F. E., Hauri, E. H., Bullock, E. S., König, S., Arculus, R. J., Mavrogenes, J. A., Mikkelsen, N. & Goddard, C. I. (2015). The competing effects of sulfide saturation versus degassing on the behavior of the chalcophile elements during the differentiation of hydrous melts. *Geochemistry, Geophysics, Geosystems* **16**, 1490–1507. <https://doi.org/10.1002/2014GC005670>.
- Reekie, C. D. J., Jenner, F. E., Smythe, D. J., Hauri, E. H., Bullock, E. S. & Williams, H. M. (2019). Sulfide resorption during crustal ascent and degassing of oceanic plateau basalts. *Nature Communications* **10**, 82. <https://doi.org/10.1038/s41467-018-08001-3>.

- Kaliwoda, M., Marschall, H. R., Marks, M. A. W., Ludwig, T., Altherr, R. & Markl, G. (2011). Boron and boron isotope systematics in the peralkaline Ilímaussaq intrusion (South Greenland) and its granitic country rocks: a record of magmatic and hydrothermal processes. *Lithos* **125**, 51–64. <https://doi.org/10.1016/j.lithos.2011.01.006>.
- Kamenetsky, V. S., Zelenski, M., Gurenko, A., Portnyagin, M., Ehrig, K., Kamenetsky, M., Churikova, T. G. & Feig, S. (2017). Silicate-sulfide liquid immiscibility in modern arc basalt (Tolbachik volcano, Kamchatka): part II. Composition, liquidus assemblage and fractionation of the silicate melt. *Chemical Geology* **471**, 92–110. <https://doi.org/10.1016/j.chemgeo.2017.09.019>.
- Kerr, A. & Leitch, A. M. (2005). Self-destructive sulfide segregation systems and the formation of high-grade magmatic ore deposits. *Economic Geology* **100**, 311–332. <https://doi.org/10.2113/gsecongeo.100.2.311>.
- Kugaenko, Y. & Volynets, A. O. (2019). Magmatic plumbing systems of the monogenetic volcanic fields: a case study of Tolbachinsky Dol, Kamchatka. *Journal of Volcanology and Geothermal Research* **383**, 63–76. <https://doi.org/10.1016/j.jvolgeores.2018.03.015>.
- Kugaenko, Y. A., Saltykov, V. A., Gorvatikov, A. V. & Stepanova, M. Y. (2018). Deep structure of the zone of Tolbachik fissure eruptions (Kamchatka, Klyuchevskoy volcano group): evidence from a complex of geological and geophysical data. *Izvestiya, Physics of the Solid Earth* **54**, 444–465. <https://doi.org/10.1134/S1069351318030059>.
- Li, Y. & Audétat, A. (2012). Partitioning of V, Mn, Co, Ni, Cu, Zn, As, Mo, Ag, Sn, Sb, W, Au, Pb, and Bi between sulfide phases and hydrous basanite melt at upper mantle conditions. *Earth and Planetary Science Letters* **355–356**, 327–340. <https://doi.org/10.1016/j.epsl.2012.08.008>.
- Lissner, M., König, S., Luguét, A., le Roux, P. J., Schuth, S., Heuser, A. & le Roex, A. P. (2014). Selenium and tellurium systematics in MORBs from the southern mid-Atlantic ridge (47–50°S). *Geochimica et Cosmochimica Acta* **144**, 379–402. <https://doi.org/10.1016/j.gca.2014.08.023>.
- Liu, X., Xiong, X., Audétat, A., Yuan, L., Song, M., Li, L., Sun, W. & Ding, X. (2014). Partitioning of copper between olivine, orthopyroxene, clinopyroxene, spinel, garnet and silicate melts at upper mantle conditions. *Geochimica et Cosmochimica Acta* **125**, 1–22. <https://doi.org/10.1016/j.gca.2013.09.039>.
- Liu, X., Xiong, X., Audétat, A. & Li, Y. (2015). Partitioning of Cu between mafic minerals, Fe–Ti oxides and intermediate to felsic melts. *Geochimica et Cosmochimica Acta* **151**, 86–102. <https://doi.org/10.1016/j.gca.2014.12.010>.
- Liu, H., Xiao, Y., Sun, H., Tong, F., Heuser, A., Churikova, T. & Wörner, G. (2020). Trace elements and Li isotope compositions across the Kamchatka arc: constraints on slab-derived fluid sources. *Journal of Geophysical Research: Solid Earth* **125**, e2019JB019237. <https://doi.org/10.1029/2019JB019237>.
- Lloyd, A. S., Ferriss, E., Ruprecht, P., Hauri, E. H., Jicha, B. R. & Plank, T. (2016). An assessment of clinopyroxene as a recorder of magmatic water and magma ascent rate. *Journal of Petrology* **57**, 1865–1886. <https://doi.org/10.1093/ptrology/egw058>.
- Marschall, H. R., Wanless, V. D., Shimizu, N., Pogge von Strandmann, P. A. E., Elliot, T. & Monteleone, B. D. (2017). The boron and lithium isotopic composition of mid-ocean ridge basalts and the mantle. *Geochimica et Cosmochimica Acta* **207**, 102–138. <https://doi.org/10.1016/j.gca.2017.03.028>.
- Mathez, E. A. (1976). Sulfur solubility and magmatic sulfides in submarine basalt glass. *Journal of Geophysical Research* **81**, 4269–4276. <https://doi.org/10.1029/JB081i023p04269>.
- Mironov, N. L. & Portnyagin, M. V. (2018). Coupling of redox conditions of mantle melting and copper and sulfur contents in primary magmas of the Tolbachinsky Dol (Kamchatka) and Juan de Fuca ridge (Pacific Ocean). *Petrology* **26**, 145–166. <https://doi.org/10.1134/S0869591118020030>.
- Moore, L. R., Gazel, E., Tuohy, R., Lloyd, A. S., Esposito, R., Steele-MacInnis, M., Hauri, E. H., Wallace, P. J., Plank, T. & Bodnar, R. J. (2015). Bubbles matter: an assessment of the contribution of vapor bubbles to melt inclusion volatile budgets. *American Mineralogist* **100**, 806–823. <https://doi.org/10.2138/am-2015-5036>.
- Nekrylov, N. A. (2015). Parental melts of Holocene volcanics of the Sredinny Ridge of Kamchatka and the role of crustal assimilation in their magmatic evolution. Ph.D. thesis, Moscow State University, Moscow, p. 183. [https://istina.msu.ru/download/11789642/1mRWon:UNJ3uSqxtYTsPrN\\_XmCLFPM2dss](https://istina.msu.ru/download/11789642/1mRWon:UNJ3uSqxtYTsPrN_XmCLFPM2dss) (in Russian).
- Nekrylov, N. A., Portnyagin, M. V., Kamenetsky, V. S., Mironov, N. L., Churikova, T. G., Plechov, P. Y., Abersteiner, A., Gorbach, N. V., Gordeychik, B. N., Krasheninnikov, S. P., Tobelko, D. P., Shur, M. Y., Tetroeva, S. A., Volynets, A. O., Hoernle, K. & Wörner, G. (2018). Chromium spinel in Late Quaternary volcanic rocks from Kamchatka: implications for spatial compositional variability of subarc mantle and its oxidation state. *Lithos* **322**, 212–224. <https://doi.org/10.1016/j.lithos.2018.10.011>.
- Palme, H. & O'Neill, H. S. C. (2014). Cosmochemical estimates of mantle composition. In: Holland H. D. & Turekian K. K. (eds) *Treatise on Geochemistry*, 2nd edn. Amsterdam: Elsevier, pp.1–39.
- Paton, C., Hellstrom, J., Paul, B., Woodhead, J. & Hergt, J. (2011). Iolite: freeware for the visualisation and processing of mass spectrometric data. *Journal of Analytical Atomic Spectrometry* **26**, 2508–2518. <https://doi.org/10.1039/C1JA10172B>.
- Plechov, P., Blundy, J., Nekrylov, N., Melekhova, E., Shcherbakov, V. & Tikhonova, M. S. (2015). Petrology and volatile content of magmas erupted from Tolbachik volcano, Kamchatka, 2012–13. *Journal of Volcanology and Geothermal Research* **307**, 182–199. <https://doi.org/10.1016/j.jvolgeores.2015.08.011>.
- Ponomareva, V., Portnyagin, M., Pevzner, M., Blaauw, M., Kyle, P. & Derkachev, A. (2015). Tephra from andesitic Shiveluch volcano, Kamchatka, NW Pacific: chronology of explosive eruptions and geochemical fingerprinting of volcanic glass. *International Journal of Earth Sciences* **104**, 1459–1482. <https://doi.org/10.1007/s00531-015-1156-4>.
- Portnyagin, M., Bindeman, I., Hoernle, K. & Hauff, F. (2007a) Geochemistry of primitive lavas of the Central Kamchatka Depression: magma generation at the edge of the Pacific Plate. In: Eichelberger J., Gordeev E., Izbekov P., Kasahara M. & Lees J. (eds) *Volcanism and Subduction: The Kamchatka Region*, vol. 172. Washington, DC: American Geophysical Union, pp.199–239.
- Portnyagin, M., Hoernle, K., Plechov, P., Mironov, N. & Khubunaya, S. (2007b). Constraints on mantle melting and composition and nature of slab components in volcanic arcs from volatiles (H<sub>2</sub>O, S, Cl, F) and trace elements in melt inclusions from the Kamchatka arc. *Earth and Planetary Science Letters* **255**, 53–69. <https://doi.org/10.1016/j.epsl.2006.12.005>.
- Portnyagin, M., Duggen, S., Hauff, F., Mironov, N., Bindeman, I., Thirlwell, M. & Hoernle, K. (2015). Geochemistry of the late Holocene rocks from the Tolbachik volcanic field, Kamchatka: quantitative modelling of subduction-related open magmatic systems. *Journal of Volcanology and Geothermal Research* **307**, 133–155. <https://doi.org/10.1016/j.jvolgeores.2015.08.015>.
- Portnyagin, M., Mironov, N. L. & Nazarova, D. P. (2017). Copper partitioning between olivine and melt inclusions and its content in Primitive Island-arc magmas of Kamchatka. *Petrology* **25**, 419–432. <https://doi.org/10.1134/S086959111704004X>.

- Ripley, E. M., Brophy, J. G. & Li, C. (2002). Copper solubility in a basaltic melt and sulfide liquid/silicate melt partition coefficients of Cu and Fe. *Geochimica et Cosmochimica Acta* **66**, 2791–2800. [https://doi.org/10.1016/S0016-7037\(02\)00872-4](https://doi.org/10.1016/S0016-7037(02)00872-4).
- Rose-Koga, E. F., Bouvier, A.-S., Gaetani, G. A., Wallace, P. J., Allison, C. M., Andrys, J. A., Angeles de la Torre, C. A., Barth, A., Bodnar, R. J., Bracco Gartner, A. J. J., Butters, D., Castillejo, A., Chilson-Parks, B., Choudhary, B. R., Cluzel, N., Cole, M., Cottrell, E., Daly, A., Danyushevsky, L. V., DeVitre, C. L., Drignon, M. J., France, L., Gaborieau, M., Garcia, M. O., Gatti, E., Genske, F. S., Hartley, M. E., Hughes, E. C., Iveson, A. A., Johnson, E. R., Jones, M., Kagoshima, T., Katzir, Y., Kawaguchi, M., Kawamoto, T., Kelley, K. A., Koornneef, J. M., Kurz, M. D., Laubier, M., Layne, G. D., Lerner, A., Lin, K. Y., Liu, P. P., Lorenzo-Merino, A., Luciani, N., Magalhães, N., Marschall, H. R., Michael, P. J., Monteleone, B. D., Moore, L. R., Moussallam, Y., Muth, M., Myers, M. L., Narváez, D. F., Navon, O., Newcombe, M. E., Nichols, A. R. L., Nielsen, R. L., Pamukcu, A., Plank, T., Rasmussen, D. J., Roberge, J., Schiavi, F., Schwartz, D., Shimizu, K., Shimizu, N., Thomas, J. B., Thompson, G. T., Tucker, J. M., Ustunisik, G., Waelkens, C., Zhang, Y. & Zhou, T. (2021). Silicate melt inclusions in the new millennium: a review of recommended practices for preparation, analysis, and data presentation. *Chemical Geology* **570**, 120145. <https://doi.org/10.1016/j.chemgeo.2021.120145>.
- Smith, I. E. M. & Németh, K. (2017) Source to surface model of monogenetic volcanism: a critical review. In: Németh K., Carrasco-Núñez G., Aranda-Gómez J. J. & Smith I. E. M. (eds) *Monogenetic Volcanism*, vol. 446. London: Geological Society, pp. 1–28 Special Publications.
- Tatsumi, Y., Kogiso, T. & Nohda, S. (1995). Formation of a third volcanic chain in Kamchatka: generation of unusual subduction-related magmas. *Contributions to Mineralogy and Petrology* **120**, 117–128. <https://doi.org/10.1007/BF00287109>.
- Thomas, R. W. & Wood, B. J. (2021). The chemical behaviour of chlorine in silicate melts. *Geochimica et Cosmochimica Acta* **294**, 28–42. <https://doi.org/10.1016/j.gca.2020.11.018>.
- Turner, S., McDermott, F., Hawkesworth, C. & Kepezhinskis, P. (1998). A U-series study of lavas from Kamchatka and the Aleutians: constraints on source composition and melting processes. *Contributions to Mineralogy and Petrology* **133**, 217–234. <https://doi.org/10.1007/s004100050449>.
- Venugopal, S., Schiavi, F., Moune, S., Bolfan-Casanova, N., Druitt, T. & Williams-Jones, G. (2020). Melt inclusion vapour bubbles: the hidden reservoir for major and volatile elements. *Scientific Reports* **10**, 9034. <https://doi.org/10.1038/s41598-020-65226-3>.
- Vergasova, L. P. & Filatov, S. K. (2012). New mineral species in products of fumarole activity of the great Tolbachik fissure eruption. *Journal of Volcanology and Seismology* **6**, 281–289. <https://doi.org/10.1134/S0742046312050053>.
- Vergasova, L. P., Filatov, S. K. & Dunin-Barkovskaya, V. V. (2007). Post-eruptive activity on the first cone of the great Tolbachik fissure eruption and recent volcanogenic generation of bauxites. *Journal of Volcanology and Seismology* **1**, 119–139. <https://doi.org/10.1134/S0742046307020030>.
- Volynets, A. O., Melnikov, D. V. & Yakushev, A. I. (2013). First data on composition of the volcanic rocks of the IVS 50th anniversary fissure Tolbachik eruption (Kamchatka). *Doklady Earth Sciences* **452**, 953–957. <https://doi.org/10.1134/S1028334X13090201>.
- Volynets, A. O., Edwards, B. R., Melnikov, D., Yakushev, A. & Griboedova, I. (2015). Monitoring of the volcanic rock compositions during the 2012–2013 fissure eruption at Tolbachik volcano, Kamchatka. *Journal of Volcanology and Geothermal Research* **307**, 120–132. <https://doi.org/10.1016/j.jvolgeores.2015.07.014>.
- Wallace, P. J., Kamenetsky, V. S. & Cervantes, P. (2015). Melt inclusion CO<sub>2</sub> contents, pressures of olivine crystallization, and the problem of shrinkage bubbles. *American Mineralogist* **100**, 787–794. <https://doi.org/10.2138/am-2015-5029>.
- Webster, J. D., Vetere, F., Botcharnikov, R. E., Goldoff, B., Mcbirney, A. & Doherty, A. L. (2015). Experimental and modeled chlorine solubilities in aluminosilicate melts at 1 to 7000 bars and 700 to 1250°C: applications to magmas of Augustine volcano, Alaska. *American Mineralogist* **100**, 522–535. <https://doi.org/10.2138/am-2015-5014>.
- Webster, J. D., Baker, D. R. & Aiuppa, A. (2018) Halogens in mafic and intermediate-silica content magmas. In: Harlov D. E. & Aronovich L. (eds) *The Role of Halogens in Terrestrial and Extraterrestrial Geochemical Processes*. Cham: Springer International Publishing, pp.307–430.
- Webster, J. D., Iveson, A. A., Rowe, M. C. & Webster, P. M. (2020). Chlorine and felsic magma evolution: modeling the behavior of an under-appreciated volatile component. *Geochimica et Cosmochimica Acta* **271**, 248–288. <https://doi.org/10.1016/j.gca.2019.12.002>.
- Wieser, P. E., Jenner, F., Edmonds, M., MacLennan, J. & Kunz, B. E. (2020). Chalcophile elements track the fate of sulfur at Kilauea volcano, Hawai'i. *Geochimica et Cosmochimica Acta* **282**, 245–275. <https://doi.org/10.1016/j.gca.2020.05.018>.
- Wieser, P. E., Iacovino, K., Matthews, S., Moor, G. & Allison, C. M. (2021). VESICAL part II: a critical approach to volatile solubility modelling using an open-source python 3 engine. *Earth and Space Sciences* **9**, e2021EA001932. <https://doi.org/10.1029/2021EA001932>.
- Zelenski, M., Kamenetsky, V. S., Mavrogenes, J. A., Danyushevsky, L. V., Matee, D. & Gurenko, A. A. (2017). Platinum-group elements and gold in sulfide melts from modern arc basalt (Tolbachik volcano, Kamchatka). *Lithos* **290–291**, 172–188. <https://doi.org/10.1016/j.lithos.2017.08.012>.
- Zelenski, M., Kamenetsky, V. S., Mavrogenes, J. A., Gurenko, A. A. & Danyushevsky, L. V. (2018). Silicate-sulfide liquid immiscibility in modern arc basalt (Tolbachik volcano, Kamchatka): part I. occurrence and compositions of sulfide melts. *Chemical Geology* **478**, 102–111. <https://doi.org/10.1016/j.chemgeo.2017.09.013>.
- Zelenski, M., Kamenetsky, V. S., Nekrylov, N. & Kontonikas-Charos, A. (2022). High sulfur in primitive arc magmas. *Minerals (Basel)* **12**, 37. <https://doi.org/10.3390/min12010037>.
- Zhang, Y., Gazel, E., Gaetani, G. & Klein, F. (2021). Serpentinite-derived slab fluids control the oxidation state of the subarc mantle. *Science Advances* **7**, eabj2515. <https://doi.org/10.1126/sciadv.abj2515>.