

E. SCHIMMENTI, S. LO BRUTTO, F. BADALAMENTI<sup>1</sup>, A. GIANGRANDE<sup>2</sup>,  
B. MIKAC<sup>1</sup>, L. MUSCO<sup>1</sup>

Dipartimento STeBiCeF, Sezione di Biologia Animale, Università di Palermo,  
Via Archirafi, 18 - 90123 Palermo, Italia.  
sabrina.lobrutto@unipa.it

<sup>1</sup>CNR-IAMC, Castellammare del Golfo (TP), Italia.

<sup>2</sup>DiSTeBA, Università del Salento, Lecce, Italia.

## DNA-BARCODING TO SOLVE THE TRICKY CASE OF CO-OCCURRING *SABELLARIA* (ANNELIDA) SPECIES IN THE MEDITERRANEAN SEA

### DNA-BARCODING PER LA CORRETTA IDENTIFICAZIONE DELLE SPECIE DEL GENERE *SABELLARIA* (ANNELIDA) IN MEDITERRANEO

**Abstract** - Intraspecific morphological variation of key taxonomic features is probably responsible for frequent misidentification of *Sabellaria* (Lamarck, 1818) species. This is the case of *Sabellaria alcocki* Gravier, 1906 whose Mediterranean records probably refer to juveniles of *S. spinulosa* (Leuckart, 1849). We hereby provide molecular tools (DNA barcoding) to improve correct delimitation of the Mediterranean species of this genus.

**Key-words:** *Polychaeta*, *Sabellaria alveolata*, *Sabellaria spinulosa*, *Sabellaria alcocki*, *COI*.

**Introduction** - *Sabellaria* (Lamarck, 1818) species are gregarious tube-builder polychaetes which produce complex reefs representing valuable and diverse habitats in coastal areas (La Porta & Nicoletti, 2009). Today three *Sabellaria* species are recorded for the Mediterranean Sea: *S. alveolata* (L., 1767), *S. spinulosa* (Leuckart, 1849) and *S. alcocki* Gravier, 1906 (Castelli *et al.*, 2008). This last is a valid species but according to several authors it is exclusive of the Indian Ocean and its Mediterranean records should be carefully revised (Lezzi *et al.*, 2015). The operculum is of paramount taxonomic importance for *Sabellaria* species identification, but its intraspecific variation, especially during development, may lead to confusion. This is the case of *S. spinulosa* showing remarkable variation in operculum morphology during development to a level that juveniles of this species resemble *S. alcocki*. These facts lead to hypothesize that Mediterranean records of *S. alcocki* could refer to juveniles of *S. spinulosa* (Lezzi *et al.*, 2015). During faunal characterization of *Sabellaria* reefs in Sicily, *S. alveolata*, *S. spinulosa* and some small specimens resembling *S. alcocki* in operculum features (*sensu* Kirtley, 1994) were collected. As the discriminatory power of DNA analysis is especially valuable in case of morphological identification of species leading to confusion (Landi *et al.*, 2014), we used DNA barcoding to correctly delimiting the studied species, thus providing a tool to avoid future misidentification of *Sabellaria* species in the Mediterranean area.

**Materials and methods** - Twenty-four core samples of *Sabellaria* reefs were collected in June 2013 at 3 Sicilian locations (Donnalucata, Eraclea Minoa, Triscina) at 1.5-3 m depth. The specimens of *Sabellaria* were counted and identified to species level. A 610 base pairs (bp) fragment of the COI gene and a 308 bp of the nuclear 28S rDNA region were sequenced for *S. alveolata*, *S. spinulosa* and *S. cf. alcocki*. The sequences were deposited in GenBank and compared with a public COI sequence of *S. spinulosa* (A.N. KF808174) collected in the eastern Atlantic. Measuring of COI genetic distances was

based on K2P model. A Neighbor Joining tree was built, its nodes are supported by a high proportion (>90%) of replicates in the bootstrap analysis.

**Results** - As a whole 17361 *Sabellaria* specimens were collected; *S. alveolata* was dominant at each station, followed by *S. spinulosa* (Donnalucata 3724 vs. 42; Triscina 10167 vs. 65; Eraclea Minoa 3350 vs. 13 individuals, respectively). Though rare specimens per station were identified as *S. cf. alcocki*, the COI sequences of *S. spinulosa* and *S. cf. alcocki* matched (Fig. 1). Both haplotypes clustered with the Atlantic *S. spinulosa*, though showing a discrete genetic differentiation which could be caused by a geographic isolation. Within the *spinulosa*-clade the distances were less than 0.9%; while the inter-species distance was estimated more than 2% supporting the species delimitation between the *alveolata* vs. *spinulosa* group. In 28S sequences only a single transition mutation occurred between *S. alveolata* and *S. spinulosa*.

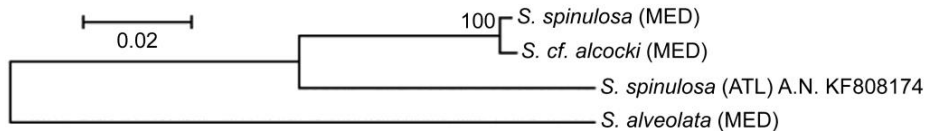


Fig. 1 - NJ tree constructed on the K2P model from COI sequences. MED: collected in the central Mediterranean; ATL: collected in the Atlantic.

*Albero NJ costruito sul modello K2P da sequenze di COI. MED: raccolto in Mediterraneo; ATL: raccolto in Atlantico.*

**Conclusions** - To our knowledge we herein provide the first COI sequences allowing molecular identification of *S. alveolata* and Mediterranean *S. spinulosa* specimens. We confirm that identification of *Sabellaria* spp. only based on morphology may lead to misidentification. Our results strengthen the hypothesis that *S. alcocki* records in the Mediterranean Sea probably derive from misidentification with *S. spinulosa* juveniles, and that the former species is not present in the area (Lezzi *et al.*, 2015). Combination of morphological and molecular taxonomic approaches may further contribute to solve problems due to species misidentification.

#### References

- CASTELLI A., BIANCHI C.N., CANTONE G., ÇINAR M.E., GAMBI M.C., GIANGRANDE A., IRACI S., LANERA P., LICCIANO M., MUSCO L., SANFILIPPO R., SIMONINI R. (2008) - Annelida Polychaeta. *Biol. Mar. Mediterr.*, **15**: 323-373.
- KIRTLEY D.W. (1994) - *A review and taxonomic revision of the family Sabellariidae Johnston, 1865 (Annelida; Polychaeta)*. Sabecon Press, Science Ser. N. 1: 223 pp.
- LANDI M., DIMECH M., ARCULEO M., BIONDO G., MARTINS R., CARNEIRO M., CARVALHO G.R., LO BRUTTO S., COSTA F.O. (2014) - DNA barcoding for species assignment: the case of Mediterranean marine fishes. *PLoS One*, **9** (9), doi: 10.1371/journal.pone.0106135.
- LA PORTA B., NICOLETTI L. (2009) - *Sabellaria alveolata* (Linnaeus) reefs in the central Tyrrhenian Sea (Italy) and associated polychaete fauna. *Zoosymposia*, **2**: 527-536.
- LEZZI M., CARDONE F., MIKAC B., GIANGRANDE A. (2015) - Variation and ontogenetic changes of opercular paleae in a population of *Sabellaria spinulosa* (Polychaeta: Sabellariidae) from the South Adriatic Sea, with remarks on larval development. *Sci. Mar.*, **79** (1): 137-150.