



Age-ranked hydrological budgets and a travel time description of catchment hydrology

Riccardo Rigon¹, Marialaura Bancheri¹, and Timothy R. Green²

¹Dipartimento di Ingegneria Civile Ambientale e Meccanica, Università degli Studi di Trento, Trento, Italy

²USDA-ARS, Water Management and Systems Research Unit, Fort Collins, Colorado, USA

Correspondence to: Riccardo Rigon (riccardo.rigon@unitn.it)

Received: 4 May 2016 – Published in Hydrol. Earth Syst. Sci. Discuss.: 9 May 2016

Revised: 9 November 2016 – Accepted: 16 November 2016 – Published: 15 December 2016

Abstract. The theory of travel time and residence time distributions is reworked from the point of view of the hydrological storages and fluxes involved. The forward and backward travel time distribution functions are defined in terms of conditional probabilities. Previous approaches that used fixed travel time distributions are not consistent with our new derivation. We explain Niemi's formula and show how it can be interpreted as an expression of the Bayes theorem. Some connections between this theory and population theory are identified by introducing an expression which connects life expectancy with travel times. The theory can be applied to conservative solutes, including a method of estimating the storage selection functions. An example, based on the Nash hydrograph, illustrates some key aspects of the theory. Generalization to an arbitrary number of reservoirs is presented.

1 Introduction

Hydrological travel times have been studied extensively for many years. Some researchers (Rodriguez-Iturbe and Valdes, 1979; Rinaldo and Rodriguez-Iturbe, 1996), as reviewed by Rigon et al. (2016), looked at the construction of the hydrologic response using geographical information. Others (e.g., Uhlenbrook and Leibundgut, 2002; Birkel et al., 2014) used travel times to understand catchment processes in relation to tracer experiments, while new experimental techniques were being developed (e.g., Berman et al., 2009; Birkel et al., 2011).

Based on these premises, Fenicia et al. (2008), Clark et al. (2011), McMillan et al. (2012), and Hrachowitz et al. (2013) aimed to describe both the spatial organization of the catch-

ment and the set of interactions between processes with an assembly of coupled storages (reservoirs) in the number and the organization necessary to give proper hydrological results without adding unwanted parametric complexity (e.g., Klemesš, 1986; Kirchner, 2006). Despite the simplification efforts, the process of adding physical rigor to their models led to quite complex systems. Travel time analysis became a tool to disentangle flux complexities (e.g., Tetzlaff et al., 2008), opening the way for explicit unification of geomorphic theories and storage-based modeling (Rigon et al., 2016).

A unique framework for understanding all catchment processes was made possible by the recent work of Rinaldo and others (Rinaldo et al., 2011; Botter et al., 2011). This new branch of research is the focus of the present work. In particular, Botter et al. (2010, 2011) introduced a newly formulated StorAge Selection (SAS) function related to the probability density function (pdf) of the water age or backward travel time distribution. With the aid of an a priori assigned SAS, they were able to write a “master equation” for the travel time probability distribution and solve it, thus systematically connecting the solution of the catchment water budget to travel time aspects of the hydrological flows. Older applications of the travel time theory mostly assumed the simplest case of complete mixing, within the control volume, which is relaxed by using the SAS concept. Subsequently others (van der Velde et al., 2012; Benettin et al., 2013, 2015; Harman, 2015b) introduced a new form of the SAS and the age-ranked distribution of water and associated compounds. Firstly, van der Velde et al. (2012) made the SAS a function of the residence time pdfs using actual time, rather than using the “injection time” when water enters the system. Subse-

quently, Harman (2015b) reformulated the SAS to be a function of the watershed storage and actual time.

These approaches opened the possibility of exploring the nature of storage–discharge relationships, which are usually parameterized within rainfall–runoff models, and can provide fundamental insight into the catchment functions invoked previously (e.g., Seibert and McDonnell, 2002; Kirchner, 2009). Also, the traditional work on groundwater flow and catchment-scale transport can be associated with the same ideas, but using time-invariant travel time distributions (e.g., Dagan, 1984). Instead, Botter et al. (2011) used an approach that is inherently non-stationary and has immediately attracted the attention of researchers in that field (e.g., van der Velde et al., 2012; Cvetkovic et al., 2012; Cvetkovic, 2013; Ali et al., 2014). A more detailed history of these concepts can be found in Benettin et al. (2013). Appendix B includes a brief review that is more specifically related to the scope of the present paper. All of these studies provided valuable advances to the theory, but the literature remains obscured by different terminologies and notations, as well as by model assumptions that are not fully explained.

There remains a need for theoretical developments that are clearly explained and developed using a consistent set of notations. Questions arise, like does the theory contain hidden parts that are not consistent or explained well? How does it relate to the instantaneous unit hydrograph theory? How can it be used? What generates time-varying backward probabilities? Does the theory fully account for those phenomena which are involved in mobilizing old water (e.g., McDonnell and Beven, 2014; Rinaldo et al., 2015; Kirchner, 2016a)?

Questions also remain about how to apply the theory of age-ranked distributions in terms of the model form and parameter estimation. Harman (2015a) noted the importance of selecting an appropriate SAS, but until very recently (Harman, 2015b), there was no proposed method for selecting the form of an SAS and estimating it from available data. Selection of the SAS for a given watershed remains a topic of importance, since it should not be imposed arbitrarily.

Our work includes a short review of existing concepts that were collected from many (mostly theoretical) papers, which used different conventions and approaches. In the following sections, the theory to date is synthesized into a framework using consistent notation. Besides presenting the concept in a new and organized way, our paper contains some non-trivial answers to the above questions. Clarifications and extensions will be presented and summarized in an integrated manner. These conceptual developments are followed by improved methods for selecting the appropriate form of SAS and estimating its parameters. Guidance for hierarchical approaches to parameter estimation is given, based on available data. Finally, the proposed framework and methods are illustrated using data from an experimental watershed.

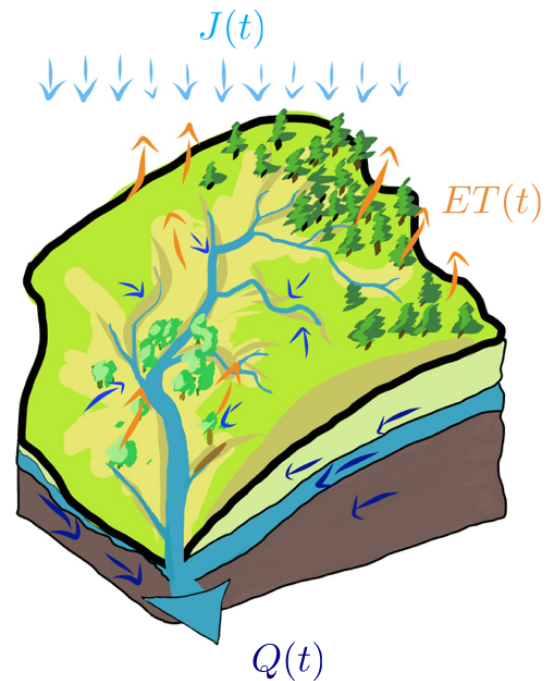


Figure 1. A single control volume is considered in which the fluxes are the total precipitation, evapotranspiration and discharge.

2 Definitions of age-ranked quantities

Residence time, travel time and life expectancy of water particles and associated constituents flowing through watersheds are three related quantities whose meaning is well defined by the following equation:

$$T = \underbrace{(t - t_{\text{in}})}_{T_r} + \underbrace{(t_{\text{ex}} - t)}_{L_e}, \quad (1)$$

where T [T] ([T] means time units) is the travel time, t [T] is the actual time measured by a clock, t_{in} [T] is the injection time (i.e., the time at which a certain amount of water enters the control volume), and t_{ex} [T] is the exit time (i.e., the time at which a certain amount of water exits the control volume). Based upon these definitions, $T_r := t - t_{\text{in}}$ [T] is the so-called residence time, or the age of water entered at time t_{in} , and $L_e := t_{\text{ex}} - t$ [T] is the life expectancy of the same water molecules which are inside of the control volume.

Consider, for example, a control volume such as the one shown in Fig. 1. Its (bulk) water budget is written as

$$\frac{dS(t)}{dt} = J(t) - Q(t) - AE_T(t), \quad (2)$$

where $S(t)$ [L^3] is the time evolution of the water storage, (L denotes length units), but instead of volume, we can measure the storage either as mass or as depth of water [L] (volume per unit area), $J(t)$ [$L^3 T^{-1}$] is the precipitation, usually a given (measured) quantity, while the discharge and the actual evapotranspiration, $Q(t)$ [$L^3 T^{-1}$] and $AE_T(t)$ [$L^3 T^{-1}$],

are modeled. Common simple estimates for the two latter quantities are

$$Q(t) = \frac{1}{\lambda} S^b(t) \quad (3)$$

and

$$AE_T(t) = \frac{S(t)}{S_{\max}} E(t), \quad (4)$$

where λ [T] and b are the parameters of the nonlinear reservoir model, S_{\max} is the maximum water storage, and $E(t)$ is the potential ET, temporal function of the radiation inputs, and atmospheric conditions. Assuming that radiation and various parameters used to model Q and AE_T are given, Eq. (2) can be solved and $S(t)$ obtained. If $b = 1$, the budget is a linear ordinary differential equation, and its solution is analytic as in Coddington and Levinson (1955); otherwise, the solution can be obtained through an appropriate numerical solver (e.g., Butcher, 1987). We made the simplification here to use a single storage for illustrative purposes. However, extending the formalism to multiple storages is straightforward, as shown in Appendix C.

Being interested in knowing the age of water, we need to consider a more general set of equations.

Assume that the water storage $S(t)$ can be decomposed into its sub-volumes $s(t, t_{\text{in}})$ [$L^3 T^{-1}$] which refer to water injected into the system at time $t_{\text{in}} \in [0, t_p]$. Thus

$$S_{t_p}(t) = \int_0^{\min(t, t_p)} s(t, t_{\text{in}}) dt_{\text{in}}, \quad (5)$$

where the initial time $t = 0$ comes before any input into the control volume, and t_p represents the end of the last precipitation considered in the analysis. The variable t represents the actual time at which the storage is considered. In the following equations, the reference to t_p will be dropped for notational simplicity, and any quantity will consider a limited time interval. The functional form of $s(t, t_{\text{in}})$, as well as the functions we define below, can vary with t and t_{in} , so they should be labeled appropriately – $s_{(t, t_{\text{in}})}(t, t_{\text{in}})$ – but this has been avoided to keep notations simple.

Analogously, $Q(t)$ [$L^3 T^{-1}$] is the discharge out of the control volume, and $q(t, t_{\text{in}})$ [$L^3 T^{-2}$] is the part of the discharge exiting the control volume at time t composed of water molecules that entered at time $t_{\text{in}} \in [0, t_p]$:

$$Q(t) = \int_0^{\min(t, t_p)} q(t, t_{\text{in}}) dt_{\text{in}}. \quad (6)$$

Actual evapotranspiration, $AE_T(t)$ [$L^3 T^{-1}$], is the sum of its parts $ae_T(t, t_{\text{in}})$ [$L^3 T^{-2}$] as

$$AE_T(t) = \int_0^{\min(t, t_p)} ae_T(t, t_{\text{in}}) dt_{\text{in}}. \quad (7)$$

Finally, let $J(t)$ [$L^3 T^{-1}$] denote the input to the control volume. This input can have an “age”, and therefore it can be defined as

$$J(t) = \int_0^{\min(t, t_p)} j(t, t_{\text{in}}) dt_{\text{in}}. \quad (8)$$

All these bivariate functions of t and t_{in} , $s(t, t_{\text{in}})$, $q(t, t_{\text{in}})$, and $ae_T(t, t_{\text{in}})$ are null for $t < t_{\text{in}}$ and can present a derivative discontinuity at the origin ($t = t_{\text{in}}$). Given the above definitions, we can rewrite the water budget as a set of age-ranked budget equations:

$$\frac{ds(t, t_{\text{in}})}{dt} = j(t, t_{\text{in}}) - q(t, t_{\text{in}}) - ae_T(t, t_{\text{in}}). \quad (9)$$

These equations were first introduced by van der Velde et al. (2012) and named by Harman (2015a), even though similar ones were present in the previous literature, as discussed in Appendix B. In our formulation, however, by using t and t_{in} instead of t and T_r as independent variables, we do not need to transform the original ordinary differential equations (Eq. 9) into partial differential equations.

3 Backward and forward approaches

“Backward” and “forward” are well-known concepts in the study of travel time distributions. They were first introduced by Niemi (1977), then by Cornaton and Perrochet (2006), for example, and recently refined by Benettin et al. (2015). Benettin et al. (2015), in particular, related the backward concept to the residence time (or age), while the concept of travel time is both forward or backward. However, according to us, these previous works did not fully disclose the inner meaning of the two concepts. In fact, in our theory, the probabilities are defined as backward when they “look” in time to the history of water molecules and forward when they “look” in time to their exit from the control volume. According to the previous statements, we can define a backward residence time probability, which is conditioned to t and “looks” backward to t_{in} , and a forward residence time probability, which is conditioned to t_{in} and “looks” forward to t . In the same way, we can define a backward life expectancy probability, which is conditioned to t_{ex} and “looks” backward to t , and a forward life expectancy probability, which is conditioned to t and “looks” forward to t_{ex} . All these concepts will be clarified further in the following sections.

4 Residence time, travel time (backward probabilities)

Based on the previous definitions, it is easy to define the pdfs of the residence time, travel time, and evapotranspiration time. In particular, the pdf of “residence time”, conditional on the actual time t , of water particles in storage,

$p_s(T_r|t)$, can be defined as

$$p_s(T_r|t) \equiv p_S(t - t_{in}|t) := \frac{s(t, t_{in})}{S(t)} \left[T^{-1} \right], \quad (10)$$

where “ \equiv ” means equivalence, and “ $:=$ ” a definition. Benettin et al. (2015) denoted $p_s(T_r|t)$ as $\overleftarrow{p}_s(T_r, t)$, but since this probability density is conditional on the actual time, standard probability notation is clear and unambiguous.

It is evident that this probability is time-variant, since the integral and the integrand in Eq. (5) keep a dependence on the clock time t .

The pdf of “travel time” is $p_Q(t - t_{in}|t)$, where $t_{ex} = t$, since we are considering the water exiting the control volume as discharge. It can be defined as

$$p_Q(t - t_{in}|t) := \frac{q(t, t_{in})}{Q(t)} \left[T^{-1} \right]. \quad (11)$$

This definition for the probability is very restrictive, and can imply inconsistencies in those papers which assume a time-invariant backward distribution to obtain a tracer concentration as shown in Appendix D. Eventually, the pdf of travel time for water exiting the control volume as water vapor, $p_{ET}(t - t_{in}|t)$, can be defined as

$$p_{ET}(t - t_{in}|t) := \frac{ae_T(t, t_{in})}{AE_T(t)} \left[T^{-1} \right]. \quad (12)$$

It is also possible to define the mean age of water for any of the two outlets, which is given by

$$\langle T_r(t) \rangle_i = \int_0^{\min(t, t_p)} (t - t_{in}) p_i(t - t_{in}|t) dt_{in} \quad (13)$$

for $i \in \{Q, ET\}$, which is a function of the sampling time (and the rainfall input).

After the above definitions, the age-ranked equation (Eq. 9) can be rewritten as

$$\frac{d}{dt} [S(t)p_s(T_r|t)] = J(t)\delta(t - t_{in}) - Q(t)p_Q(t - t_{in}|t) - AE_T(t)p_{ET}(t - t_{in}|t), \quad (14)$$

when a single “new water” injection of mass is considered, and the bulk quantities $S(t)$, $Q(t)$, and $AE_T(t)$ are known as soon as the bulk water budget, Eq. (2), is solved. $\delta(t - t_{in})$ is a Dirac-delta function to account for the water particles in precipitation with age zero. The travel time probabilities on the right side of Eq. (14) are not known. Consequently Botter et al. (2011) introduced a storage selection function, $\omega(t, t_{in})(-)$, for each of the outputs that relate the travel times to the residence time, so that

$$p_Q(t - t_{in}|t) := \omega_Q(t, t_{in}) p_s(T_r|t) \quad (15)$$

and

$$p_{ET}(t - t_{in}|t) := \omega_{ET}(t, t_{in}) p_s(T_r|t). \quad (16)$$

Therefore Eq. (14), after the proper substitutions, becomes

$$\begin{aligned} \frac{d}{dt} [S(t)p_s(T_r|t)] &= J(t)\delta(t - t_{in}) \\ &\quad - Q(t)\omega_Q(t, t_{in}) p_s(T_r|t) \\ &\quad - AE_T(t)\omega_{ET}(t, t_{in}) p_s(T_r|t). \end{aligned} \quad (17)$$

Once assigned the $\omega(t, t_{in})$ values on the basis of some heuristic, as in Botter et al. (2011), Eq. (17) represents a linear ordinary differential equation and can be solved exactly as

$$p_s(T_r|t) = e^{-\int_{t_{in}}^t g(x, t_{in}) dx} \left[p(0|t) + \int_{t_{in}}^t \frac{J(y)\delta(y - t_{in})}{S(y)} e^{\int_{t_{in}}^y g(x, t_{in}) dx} dy \right] \quad (18)$$

where

$$g(x, t_{in}) = \frac{1}{S(x)} \left[\frac{dS(x)}{dx} + Q(x)\omega_Q(x, t_{in}) + AE_T(x)\omega_{ET}(x, t_{in}) \right] \quad (19)$$

and $p(0|t)$ is the initial condition. This is only valid if Eq. (17) is linear, i.e., $\omega(t, t_{in})$ is not a function of $p_s(T_r|t)$. Figure 2 shows the variation of the $p_s(T_r|t)$ with the injection time, while the chronological time is kept fixed. The curves were obtained considering three different injections at t_{in1} , t_{in2} , and t_{in3} , and assuming $\omega_Q(t, t_{in}) = \omega_{ET}(t, t_{in}) = 1$.

The conditional probability $p_s(T_r|t)$ properly integrates to one, as shown in Fig. 3, when it is integrated in t_{in} . In particular, Fig. 3 shows that $p_s(T_r|t)$ is constant when $J(t) = 0$. In fact, if we consider $\omega_Q(t, t_{in}) = \omega_{ET}(t, t_{in}) = 1$, Eq. (17) is simplified in

$$\frac{d}{dt} [S(t)p_s(T_r|t)] = -Q(t)p_s(T_r|t) - AE_T(t)p_s(T_r|t) \quad (20)$$

and, therefore,

$$\frac{dp_s(T_r|t)}{dt} = -\frac{p_s(T_r|t)}{S(t)} \left[\frac{dS(t)}{dt} - Q(t) - AE_T(t) \right] = 0. \quad (21)$$

Figure 4 shows the evolution of $p_s(T_r|t)$ with the actual time t and the injection time kept fixed. The integral of the area under the three curves, obtained for the same three injections, in this case, is not equal to 1, since the functions are not pdfs in t .

5 Response time (forward probabilities)

Consider again the age-ranked Eq. (9). Since we want to track the evolution of a water particle while crossing the

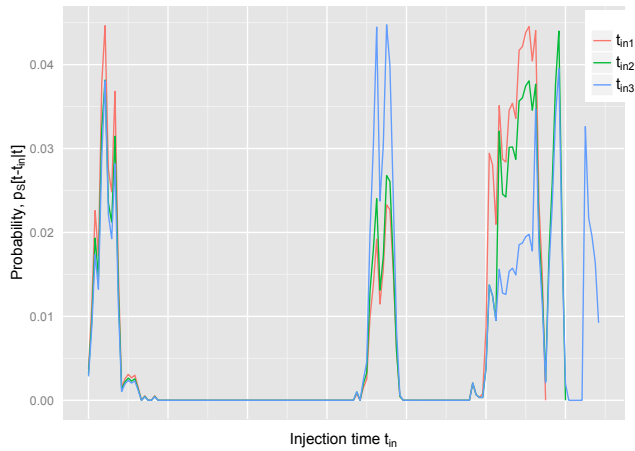


Figure 2. Representation of the evolution of the backward pdf for three injection times (t_{in_i} , where $i = 1, 3$) as varying with the injection time t_{in} . The time shift between the three injections was dropped for a direct comparison of the curves.

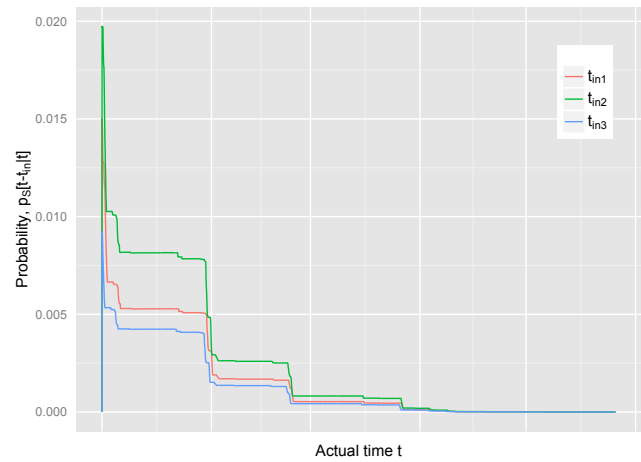


Figure 4. Representation of the evolution of the backward pdf vs. the actual time t . The time shift between the three injections was dropped for a direct comparison of the curves. In this case, the area below the curves is not equal to 1.

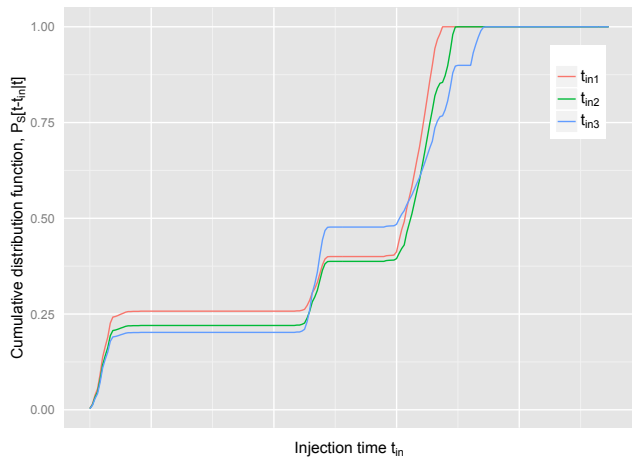


Figure 3. Representation of the backward cumulative distribution function for three injection times (t_{in_i} , where $i = 1, 3$) as varying with the actual time t . The time shift between the three injections was dropped for a direct comparison of the curves.

catchment, we can write its integral form over dt as

$$s(t, t_{in}) = J(t_{in}) - \int_0^t q(t, t_{in}) dt - \int_0^t ae_T(t, t_{in}) dt. \quad (22)$$

It can be rewritten as a probability conditional on t_{in} ,

$$P_S[t - t_{in}|t_{in}] := 1 - \frac{s(t, t_{in})}{J(t_{in})} = \frac{V_Q(t, t_{in})}{J(t_{in})} + \frac{V_{AE_T}(t, t_{in})}{J(t_{in})}, \quad (23)$$

called “forward residence time” probability distribution, having defined

$$V_Q(t, t_{in}) := \int_0^t q(t, t_{in}) dt \quad (24)$$

and

$$V_{AE_T}(t, t_{in}) = \int_0^t ae_T(t, t_{in}) dt. \quad (25)$$

$P_S[t - t_{in}|t_{in}]$, as shown in Fig. 5, varies (with t), as expected, between 0 and 1 and has density

$$p_S(t - t_{in}|t_{in}) = -\frac{1}{J(t_{in})} \frac{ds(t, t_{in})}{dt} = \frac{q(t, t_{in})}{J(t_{in})} + \frac{ae_T(t, t_{in})}{J(t_{in})}. \quad (26)$$

It can be observed instead that

$$\mathcal{F}(t - t_{in}|t_{in}) := \frac{V_Q(t, t_{in})}{J(t_{in})} \quad (27)$$

and

$$\mathcal{G}(t - t_{in}|t_{in}) := \frac{V_{AE_T}(t, t_{in})}{J(t_{in})} \quad (28)$$

are not probability functions, because their asymptotic value is not 1. Because the forward probabilities are derived, in the case we are describing, on empirical bases from the budget terms, and are not assumed a priori, their complete shape is known only at $t \rightarrow \infty$. For any finite time, the actual knowledge we have is better represented in Fig. 6, which shows that the progress of the three curves P_S , \mathcal{F} , and \mathcal{G} is unknown for future times.

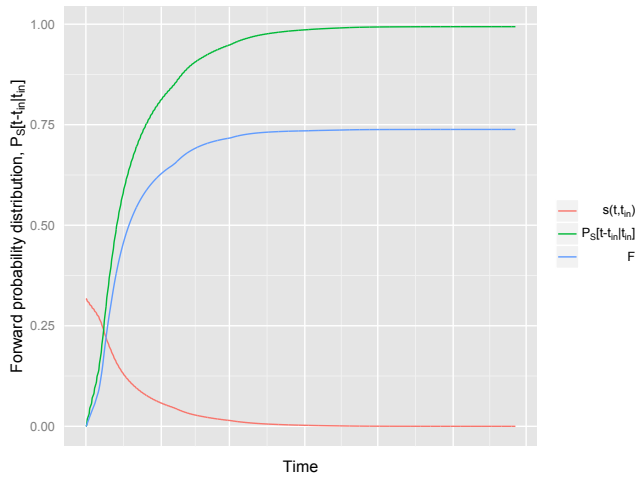


Figure 5. Forward residence time probability distribution: in red the relative storage, in green the forward residence time distribution and in blue the relative discharge function.

In order to normalize \mathcal{F} and \mathcal{G} , the asymptotic value of the partitioning coefficient is defined among the Q and ET:

$$\Theta(t_{\text{in}}) := \lim_{t \rightarrow \infty} \Theta(t, t_{\text{in}}) := \lim_{t \rightarrow \infty} \frac{V_Q(t, t_{\text{in}})}{V_Q(t, t_{\text{in}}) + V_{\text{AET}}(t, t_{\text{in}})}. \quad (29)$$

Then, it is easy to show that

$$p_Q(t - t_{\text{in}} | t_{\text{in}}) := \frac{q(t, t_{\text{in}})}{\Theta(t_{\text{in}}) J(t_{\text{in}})} \quad (30)$$

and

$$p_{\text{ET}}(t - t_{\text{in}} | t_{\text{in}}) := \frac{ae_T(t, t_{\text{in}})}{(1 - \Theta(t_{\text{in}})) J(t_{\text{in}})} \quad (31)$$

are the forward probability density functions of discharges and evapotranspiration, which properly normalize to 1 when integrated over t . The two probability density functions p_Q and p_{ET} are related through

$$p_s(t - t_{\text{in}} | t_{\text{in}}) = \Theta p_Q(t - t_{\text{in}} | t_{\text{in}}) + (1 - \Theta) p_{\text{ET}}(t - t_{\text{in}} | t_{\text{in}}). \quad (32)$$

Unlike backward probabilities, the forward probabilities describe how a catchment reacts to precipitation events, but they do not describe the actual time the water takes to move through the catchment. To avoid confusion, the expected value of a travel time, weighted by the forward distribution, will be called the mean “response time” (instead of mean travel time). For discharge, the result is

$$Q(t) = \int_0^{\min(t, t_p)} p_Q(t - t_{\text{in}} | t_{\text{in}}) \Theta(t_{\text{in}}) J(t_{\text{in}}) dt_{\text{in}}, \quad (33)$$

which can be seen as a generalization of the instantaneous unit hydrograph (IUH).

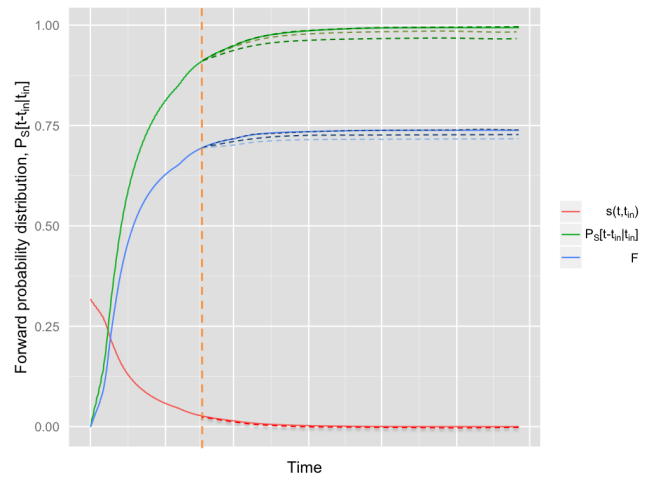


Figure 6. Representation of the forward probability of the outputs: in red the relative storage, $s(t, t_{\text{in}})$, in green the output probability, $P_s[t - t_{\text{in}} | t_{\text{in}}]$, and in blue the relative discharge function \mathcal{F} , defined in the text. The difference between $P_s[t - t_{\text{in}} | t_{\text{in}}]$ and \mathcal{F} is the function \mathcal{G} , defined in the text. The orange dashed line represents the generic instant t , after which $P_s[t - t_{\text{in}} | t_{\text{in}}]$ and \mathcal{F} are unknown.

Although Θ may be unknown at any finite time, the actual state of the system is obtained by solving the budget equation. More information and details on this partitioning coefficient are provided in the next section.

6 The partitioning coefficient Θ

$\Theta(t_{\text{in}})$ has been introduced to complete the algebra of probabilities in the presence of more than one outflow. However, estimation of the coefficient is important by itself, because it summarizes the relevant partitioning of hydrologic fluxes.

The first plot in Fig. 7 shows a time series of $\Theta(t, t_{\text{in}})$ values obtained from a single injection time considering the complete mixing case ($\omega_Q(t, t_{\text{in}}) = \omega_{\text{ET}}(t, t_{\text{in}}) = 1$). Data used for the simulation are from Posina River, a small catchment in the northeastern part of the pre-alpine mountains in the Veneto region, Italy. At the beginning $\Theta(t_{\text{in}})$ (Fig. 7, top panel) shows large oscillations due to hourly and daily oscillations, especially in evapotranspiration. Because $\Theta(t_{\text{in}})$ is defined through integrals, these oscillations are progressively damped and become irrelevant after a couple of weeks (when discharge is still higher than baseflow, as appears from the age-ranked discharge in Fig. 7, bottom panel).

Figure 8 shows different time series of the partitioning coefficient: each curve represents the time evolution of $\Theta(t, t_{\text{in}})$ obtained considering 12 precipitation events, one for each month of a year of rainfall data and considering the complete mixing case ($\omega_Q(t, t_{\text{in}}) = \omega_{\text{ET}}(t, t_{\text{in}}) = 1$). The highest values of the coefficient ($\Theta(t_{\text{in}}) = 0.75$), in this case, are achieved during the coldest months of the year, in which the evapotranspiration flux is lower. By contrast, smaller $\Theta(t_{\text{in}})$ values

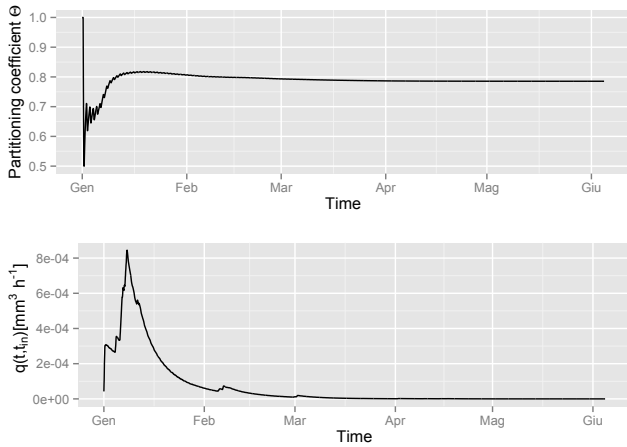


Figure 7. Variation of the partitioning coefficient in time, for a single injection time in January: after a timescale of 5 months its oscillation became irrelevant and its value tended to its final value of 0.78.

were obtained in the summer months, with a minimum in June around 0.25.

7 Niemi's relation

As a result of definitions made in Sects. 4 and 5, two relations exist involving $q(t, t_{in})$, i.e., Eqs. (11) and (30), and $ae_T(t, t_{in})$, i.e., Eqs. (12) and (31). Equating the two corresponding expressions results in

$$Q(t)p_Q(t - t_{in}|t) = \Theta(t_{in})p_Q(t - t_{in}|t_{in})J(t_{in}) \quad (34)$$

and

$$AE_T(t)p_{ET}(t - t_{in}|t) = [1 - \Theta(t_{in})]p_{ET}(t - t_{in}|t_{in})J(t_{in}), \quad (35)$$

where $t = t_{ex}$ since we are considering the particles leaving the control volume as discharge and evapotranspiration. The above relations are known in the literature as Niemi's relations or formulas, after Niemi (1977).

Defining the total volume of water injected in the system in $[0, t_p]$,

$$V_S(t_p) := \int_0^{\min(t, t_p)} J(t_{in}) dt_{in} = \int_0^{\min(t, t_p)} (Q(t) + AE_T(t)) dt \quad (36)$$

it can be observed that

$$p_J(t_{in}) := \frac{J(t_{in})}{V_S(t_p)} \quad (37)$$

can be considered the marginal pdf of the injection times, or the fraction of precipitation at a certain discrete t_{in} with re-

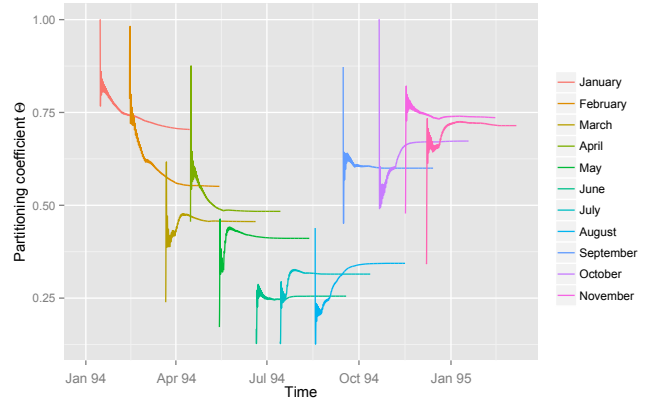


Figure 8. Evolution of the partitioning coefficient in 1 year of hourly simulation: the highest values are achieved in January, with the lowest in June. However, the figure does not represent a simple oscillation. The March coefficient is lower than April. October and November present almost the same value.

spect to the total precipitation over a period of $[0, t_p]$. Analogously

$$p_Q(t) := \frac{Q(t)}{\Theta(t_{in})V_S(t_{in})} \quad (38)$$

is the marginal pdf of the outflow as discharge, or the fraction of discharge at a certain t generated by precipitation in the same $[0, t_p]$. Then, Niemi's relation (Eq. 34) becomes

$$p_Q(t - t_{in}|t)p_Q(t) = p_Q(t - t_{in}|t_{in})p_J(t_{in}), \quad (39)$$

which has the form of the well-known Bayes theorem. This shows that the interpretation of the backward and forward probabilities as conditional ones is fully consistent. On the other hand, this reveals that the joint probability of T_r and t is

$$p_s(T_r, t) = p_Q(t - t_{in}|t)p_Q(t) = p_Q(t - t_{in}|t_{in})p_J(t_{in}). \quad (40)$$

Because the future is unknown, as remarked in Sect. 5, there should be a working Niemi relation for any finite time t which does not require the knowledge of the asymptotic value $\Theta(t_{in})$. This can be easily derived after having defined

$$g(t - t_{in}|t_{in}) := \frac{ae_T(t, t_{in})}{J(t_{in})} \equiv \frac{dG}{dt} \quad (41)$$

and

$$f(t - t_{in}|t_{in}) := \frac{q(t, t_{in})}{J(t_{in})} \equiv \frac{dF}{dt}. \quad (42)$$

From these definitions,

$$q(t, t_{in}) = f(t - t_{in}|t_{in})J(t_{in}) \quad (43)$$

and

$$ae_T(t, t_{in}) = g(t - t_{in}|t_{in}) J(t_{in}) \quad (44)$$

and, therefore,

$$Q(t)p_Q(t - t_{in}|t) = f(t - t_{in}|t_{in}) J(t_{in}) \quad (45)$$

for discharges, and

$$AE_T(t)p_{AE_T}(t - t_{in}|t) = g(t - t_{in}|t_{in}) J(t_{in}) \quad (46)$$

for evapotranspiration.

As a byproduct, the SAS and the forward functions are shown to be related. For discharge at any time t , for example,

$$f(t - t_{in}|t_{in}) = \frac{Q(t)\omega_Q(t, t_{in})p_s(t - t_{in}|t)}{J(t_{in})}. \quad (47)$$

8 Residence times, travel times and life expectancy

The forward probabilities can be related to the life expectancy, i.e., the expected time the water molecules remain in the storage.

In the control volume, we can conceptually denote the subsets of the storage which contains the water molecules expected to exit at time t_{ex} as

$$s_{t_{ex}}(t, t_{ex}). \quad (48)$$

Analogously to what was done before, we can observe that the quantity

$$p_s(t_{ex} - t|t) := \frac{s_{t_{ex}}(t, t_{ex})}{S(t)} \quad (49)$$

has the structure of a probability density function once integrated over all t_{ex} s, and it is reasonable to call it the probability density of storage “life expectancy” for particles in the control volume at time t .

However, $p_s(t_{ex} - t|t)$ can also be related to the forward probabilities discussed in the previous section. In fact, it can be observed that the probability of storage-life expectancy satisfies the following relation to the age-ranked forward quantities:

$$s_{t_{ex}}(t, t_{ex}) = \int_0^{\min(t, t_p)} [q(t_{ex}, t_{in}) + ae_T(t_{ex}, t_{in})] dt_{in} - \int_0^{\min(t, t_p)} [q(t, t_{in}) + ae_T(t, t_{in})] dt_{in}, \quad (50)$$

where, according to the definitions,

$$\int_0^{\min(t, t_p)} [q(t_k, t_{in}) + ae_T(t_k, t_{in})] dt_{in}$$

$$= \int_0^{\min(t, t_p)} [\Theta(t_{in}) p_Q(t_k - t_{in}|t_{in}) + (1 - \Theta(t_{in})) p_{AE_T}(t_k - t_{in}|t_{in})] J(t_{in}) dt_{in}. \quad (51)$$

The variable t_k , used to make the equations above and below more concise, is such that $t_0 = t_{ex}$ ($k = 0$) and $t_1 = t$ ($k = 1$). The integral spans the time interval up to t_p because we are considering the storage derived for precipitation in the finite interval $[0, t_p]$. In Eq. (50) the equality says that the life storage at time t is equal to the water injected for any time $t_{in} \in [0, t_p]$, which is expected to exit as discharge or evapotranspiration at time t_{ex} . The water still inside the control volume at clock time t is, however, all the water that entered the volume up to time t , minus the water that already flowed out.

This integral is not effectively known at time t , because what is happening between time t and t_{ex} is unknown, and so are the pdfs (as in Fig. 5), unless they are specified from some educated guess, as made in the last section of this paper. It follows that

$$p_s(t_{ex} - t|t) = S(t)^{-1} \sum_{k=0}^1 (-1)^k \int_0^{\min(t, t_p)} [\Theta(t_{in}) p_Q(t_k - t_{in}|t_{in}) + (1 - \Theta(t_{in})) p_{AE_T}(t_k - t_{in}|t_{in})] J(t_{in}) dt_{in}. \quad (52)$$

Thus, the relation between the storage-life expectancy and the previously introduced backward and forward probabilities is mediated by an integral equation.

9 Passive and reactive solutes

The formalism developed in Sects. 2 to 6 applies in principle to any conservative substance, indicated by a superscript i . Therefore we have a bulk budget equation for the mass of the substance i and an age-ranked budget for the same substance:

$$\frac{dS^i(t)}{dt} = J^i(t) - Q^i(t) + R^i(S(t)) \quad (53)$$

and

$$\frac{ds^i(t, t_{in})}{dt} = j^i(t, t_{in}) - q^i(t, t_{in}) + r^i(s(t - t_{in})), \quad (54)$$

which represent trivial extensions of Eqs. (2) and (9). To simplify this illustration, we have neglected evapotranspiration, which will be re-introduced eventually, but we have added a sink–source term including any physical or chemical reactions, extending Duffy (2010). However, if the substance is dissolved in water, it is usually treated as a concentration (either in terms of mass, moles, or volume per the same quantity of water). Because we have various terms in the equations, concentrations are possibly as many as the terms that appear

(in this case, three):

$$C_S^i(t) := \frac{S^i(t)}{S(t)} \quad (55)$$

for the concentration in storage,

$$C_J^i(t) := \frac{J^i(t)}{J(t)} \quad (56)$$

for concentration in input, and

$$C_Q^i(t) := \frac{Q^i(t)}{Q(t)} \quad (57)$$

for discharges. The latter is actually the one which is usually covered in the literature, since it is the one measured at the outlet of a control volume/catchment. For the solute discharge, an integral expression like

$$Q^i(t) = \int_0^{\min(t, t_p)} \Theta(t_{in}) p_Q(t - t_{in}|t_{in}) J^i(t_{in}) dt_{in} \quad (58)$$

is assumed to be valid, where the i has been dropped from the probability distribution function, assuming that a passive solute moves with the water. Dividing Eq. (58) by the water discharge,

$$C_Q^i(t) = \int_0^{\min(t, t_p)} \frac{\Theta(t_{in}) p_Q(t - t_{in}|t_{in})}{Q(t)} J^i(t_{in}) dt_{in} \quad (59)$$

is obtained and, finally, applying Niemi's formula,

$$\begin{aligned} C_Q^i(t) &= \int_0^{\min(t, t_p)} p_Q(t - t_{in}|t) \frac{J^i(t_{in})}{J(t_{in})} dt_{in} \\ &= \int_0^{\min(t, t_p)} p_Q(t - t_{in}|t) C_J^i(t_{in}) dt_{in}. \end{aligned} \quad (60)$$

Therefore the concentration of the passive solute in discharge is known once the concentration of the solute in input is known together with the backward probability (Rinaldo et al., 2011). The concentration estimated in this way groups substances injected at any time, in agreement with measurement practices. When a sample is taken, the action implies perfect mixing of all the age-ranked waters in the volume where measurements are made.

The bulk substance budget can instead be written as

$$\begin{aligned} \frac{dS^i(t)}{dt} &= \frac{dC_S^i(t)S(t)}{dt} = J^i(t) - Q^i(t) + R^i(S(t)) \\ &= J^i(t) - C_Q^i(t)Q(t) + R^i(S(t)) \end{aligned} \quad (61)$$

and the missing concentration $C_S^i(t)$ can be easily estimated with the help of Eq. (55) since $S(t)$ is also known.

The above is essentially the same as Eq. (12) in Duffy (2010), but the age-ranked formalism can be used to understand a little more about the processes in action. Starting from the quantities that appear in Eq. (54), the backward probability can be defined as

$$p_S^i(t - t_{in}|t) := \frac{s^i(t, t_{in})}{S^i(t)} \quad (62)$$

and analogous definitions (e.g., Eq. 11) can be given for the discharge and the inputs, so as to obtain, after the appropriate substitutions,

$$\begin{aligned} \frac{d}{dt} C_S^i(t)S(t)p_S(t - t_{in}|t) &= J^i(t)\delta(t - t_{in}) \\ &\quad - C_Q^i(t)Q(t)\underbrace{\omega_Q(t, t_{in}) p_S(t - t_{in}|t)}_{p_Q(t-t_{in}|t)} + r^i(t, t_{in}), \end{aligned} \quad (63)$$

which is the master equation (Eq. 17) for the substance i . Many of the superscripts i were dropped, because the i -substance does not modify the velocity (i.e., it behaves like water).

The braces were added to emphasize that $p_Q(t - t_{in}|t)$ should have been left, and we could solve the system of equations directly for $p_S(t - t_{in}|t)$ and $p_Q(t - t_{in}|t)$, obtaining eventually the age-ranked quantities, using Eq. (53).

In fact, in Eq. (63) all the quantities are known, either because of a solution of the solute budget Eq. (53) or the water master equation (Eq. 17), or a known input ($J(t)$). The only quantity that is unknown (and usually guessed) is $\omega_Q(t, t_{in})$. However, Eqs. (63) and (17) can be seen as two coupled equations in $p_S(t - t_{in}|t)$ and $\omega_Q(t, t_{in})$, and we can conclude that the SAS can be derived rather than imposed.

From a practical point of view there could be some obstacles in the correct determination of the SAS, because the distribution of the input of the substance can be unknown. In this case Eq. (63) can be used to back-trace the passive solute injection, after having made educated guesses on the SAS. In the presence of more than one solute, the flow of every solute obeys the same probabilities p_S and p_Q . This redundancy can then be used for improving their estimation by applying the appropriate statistical techniques.

For the sake of simplicity we neglected evapotranspiration. However, now that the concepts are established, we can observe that incorporating AE_T involves a second SAS, which remains undetermined. Various approaches can be chosen to overcome this fact. For instance, it can be assumed that $\omega_Q(t, t_{in}) = \omega_{ET}(t, t_{in})$. Nevertheless, the main experimental approach would be to find a second passive tracer transported through vegetation. In this case, if a third equation similar to Eq. (63), but containing evapotranspiration, would hold, it would permit the determination of the missing SAS coefficient.

Duffy (2010), as in Carrera and Medina (1999), added an equation for water age similar to our Eqs. (53) and (63). This is necessary when dealing with spatially distributed properties (see Appendix B), but not at our spatially integrated scales. In fact, in our case, water age can be estimated directly from its definition (Eq. 13), since the probability distribution of residence time is known.

Finally, in order to clarify this theory, an example of r^i could be

$$r^i(t, t_{in}) := k_1 \left(s^i(t, t_{in}) - k_2 s_{eq}^i \right), \quad (64)$$

where k_1 and k_2 are suitable reaction constants and s_{eq}^i represents an equilibrium storage. Whilst more complex reactions can be envisioned, this type of reaction (or sink term), being linear, does not alter the essential traits of the theory described above.

10 A simple example where probabilities are assigned instead than derived

With the scope to further clarify the formalism, we assume in this section that the forward pdfs introduced in the previous sections are known. We use the concept of linear reservoir, which has a long history in surface hydrology, e.g., Dooge (1973).

First consider only one outflow: the bulk equation for the water budget of a single linear reservoir is

$$\frac{dS(t)}{dt} = \sum_{t_{in}=1}^n R_{t_{in}} - \frac{1}{\lambda} S(t), \quad (65)$$

where it has been assumed, for simplicity, that $J(t) = \sum_{t_{in}=1}^n R_{t_{in}}$, i.e., that the precipitation is accounted for as a sequence of instantaneous impulses at different times t_{in} . By definition of the linear reservoir,

$$Q(t) = \frac{1}{\lambda} S(t), \quad (66)$$

where λ [T] is the mean response time (not to be confused with the mean “travel time” derived from the backward distributions) in the reservoir. If this is the case, assuming that the age-ranked storages behave linearly, the age-ranked water budgets can be written as

$$\frac{ds(t, t_{in})}{dt} = R_{t_{in}} \delta(t - t_{in}) - \frac{1}{\lambda} s(t, t_{in}), \quad (67)$$

where it is

$$q(t, t_{in}) = \frac{1}{\lambda} s(t, t_{in}). \quad (68)$$

Equation (67), after integration over t_{in} , reduces to Eq. (65). By definition, it is $s(t, t_{in}) = 0$ for $t < t_{in}$, and the solution for $t > t_{in}$ is well known as

$$s(t, t_{in}) = R_{t_{in}} e^{-\frac{t-t_{in}}{\lambda}}. \quad (69)$$

The equivalent solution, for $S(t)$, gives

$$S(t) = \int_{t_{in}}^t R_{t_{in}} e^{-(t-t_{in})/\lambda} dt_{in}, \quad (70)$$

and the backward probability can then be written as

$$p_s(t - t_{in}|t) = \frac{R_{t_{in}} e^{-\frac{t-t_{in}}{\lambda}}}{\int_{t_{in}}^t R_{t_{in}} e^{-(t-t_{in})/\lambda} dt_{in}}. \quad (71)$$

If and only if $R_{t_{in}}$ is a constant, the probability simplifies, and it is time-invariant, i.e., dependent only on the residence time $T_r = t - t_{in}$. Please note that, in this case, we did not appeal to Eq. (17) to estimate the backward probability. Instead, in Eq. (71), we used the definitions.

Because discharges are just linearly proportional to the storage, it is easy to show that $p_Q(t - t_{in}|t) = p_s(t - t_{in}|t)$ and, therefore, in this case, $\omega(t, t_{in}) = 1$. This shows that for the linear reservoir case, where for all injection times the mean residence time is equal (to λ), the SAS function is necessarily unitary. However, a more general case can be set if the mean residence time is a function of t_{in} , meaning that Eq. (67) can be modified into

$$\frac{ds(t, t_{in})}{dt} = R_{t_{in}} \delta(t - t_{in}) - \frac{1}{\lambda_{t_{in}}} s(t, t_{in}), \quad (72)$$

and its solution for $t > t_{in}$ is the same as Eq. (69), but with λ muted into $\lambda_{t_{in}}$. However, due to the dependence of $\lambda_{t_{in}}$ on the injection time, the SAS is not a constant any more, being equal to

$$\begin{aligned} \omega_Q(t, t_{in}) &:= \frac{p_Q(t - t_{in}|t)}{p_s(t - t_{in}|t)} = \lambda_{t_{in}}^{-1} \frac{\int_{t_{in}}^t R_{t_{in}} e^{-(t-t_{in})/\lambda_{t_{in}}} dt_{in}}{\int_{t_{in}}^t \lambda_{t_{in}}^{-1} R_{t_{in}} e^{-(t-t_{in})/\lambda_{t_{in}}} dt_{in}} \\ &= \lambda_{t_{in}}^{-1} \frac{\int_{t_{in}}^t R_{t_{in}} e^{+t_{in}/\lambda_{t_{in}}} dt_{in}}{\int_{t_{in}}^t \lambda_{t_{in}}^{-1} R_{t_{in}} e^{t_{in}/\lambda_{t_{in}}} dt_{in}}. \end{aligned} \quad (73)$$

This seems to suggest that imposing the characteristics of the forward pdf could completely determine the $\omega_Q(t, t_{in})$. Vice versa, as already known, assigning $\omega_Q(t, t_{in})$ from some heuristic, obviously, would determine a mean residence time dependence on the injection time.

Non-trivial $\omega(t, t_{in})$ can also be derived from assuming a sequence of linear reservoirs, as in the so-called Nash model (Dooge, 1973). Without going into details, a sequence of linear reservoirs implies that just the last reservoir maintains a linear relation between storage and outflow. Instead, a non-linear relationship exists between the whole storage and the same outflow, also implying a nonlinear SAS.

Even if semi-analytical results are not feasible using non-linear reservoirs, suitably tuning the parameters of each age-ranked equation cannot change the form of the SAS, as is also suggested by arguments below.

Other aspects come into play when there are multiple outputs. Expanding the previous linear case to include evapotranspiration, the bulk equation becomes

$$\frac{dS(t)}{dt} = \sum_{t_{in}=1}^n R_{t_{in}} - \left(\frac{1}{\lambda} - aet(t) \right) S(t), \quad (74)$$

where the actual evapotranspiration is assumed to equal

$$AE_T(t) = S(t)aet(t) \quad (75)$$

with a linear dependence on the soil water content, as for instance in Rodriguez-Iturbe et al. (1999). The equations of water budget for the generations becomes

$$\frac{ds(t, t_{in})}{dt} = R_{t_{in}} \delta(t - t_{in}) - \left(\frac{1}{\lambda_{t_{in}}} + aet(t, t_{in}) \right) s(t, t_{in}), \quad (76)$$

where the bivariate dependence of $aet(t, t_{in})$ on the actual time and the injection time can be justified by arguing that water of different ages is not perfectly mixed in the control volume and plant roots sample water of different ages in different modes, according to their spatial distributions. Since Eq. (76) remains a linear ordinary differential equation, it can be solved analytically, and

$$s(t, t_{in}) = R_{t_{in}} e^{-\Lambda(t, t_{in})} \quad (77)$$

where

$$\Lambda(t, t_{in}) := \int_{t_{in}}^t \left(\frac{1}{\lambda_{t_{in}}} + aet(t', t_{in}) \right) dt' \quad (78)$$

and

$$S(t) = \int_0^t R_{t_{in}} e^{-\Lambda(t, t_{in})} dt_{in}. \quad (79)$$

Notably, the outflow terms can be expressed as a function of the storage:

$$q(t, t_{in}) + aet(t, t_{in}) = \mu(t, t_{in}) s(t, t_{in}). \quad (80)$$

The problem remains linear and analytically solvable. The quantity $\mu(t, t_{in})$ is usually called the age and mass-specific output rate (Calabrese and Porporato, 2015). Solving Eq. (76), it is not even necessary to show that

$$\omega_{ET}(t, t_{in}) \neq 1. \quad (81)$$

The latter condition is regained if and only if $aet(t, t_{in}) = aet(t)$; i.e., it depends only on the current time (which

is a condition that requires the perfect mixing of aged waters). In fact, in case a dependence on t_{in} remains, then trivial algebra says that

$$p_{ET}(t - t_{in}|t) = \frac{aet(t, t_{in}) s(t, t_{in})}{\int_{t_{in}}^t aet(t, t_{in}) s(t, t_{in}) dt_{in}}, \quad (82)$$

which implies

$$\omega_{ET}(t, t_{in}) := \frac{p_{ET}(t - t_{in}|t)}{p_s(t - t_{in}|t)} = \frac{aet(t, t_{in}) \int_{t_{in}}^t R_{t_{in}} e^{-\Lambda(t, t_{in})} dt_{in}}{\int_{t_{in}}^t aet(t, t_{in}) S(t, t_{in}) dt_{in}}. \quad (83)$$

Obviously these results, obtained by imposing a travel time probability, can be inconsistent with tracer results, because both approaches impose a specific estimate of the ω functions.

11 Conclusions

We reviewed existing concepts that were collected from many different papers, and presented them in a new systematic way. We established a consistent framework that offers a unified view of the travel time theories across surface water and groundwater.

It contains several clarifications and extensions.

Clarifications include the following.

- The concepts of forward and backward conditional probabilities and a small but important change in notation.
- Their one-to-one relation with the water budget (and the age-ranked functions) from which the probabilities were derived (after the choice of SASs).
- The proper way to choose backward probabilities. Specifically, it was shown that the usual way to assign time-invariant backward probabilities is inappropriate. We also show how to do it correctly, and introduced a minimal time variability.
- The fact that time-invariant forward probabilities usually imply time-varying backward probabilities, i.e., travel time distributions.
- The rewriting of the master equation by Botter, Bertuzzo, and Rinaldo as an ordinary differential equation (instead of a partial differential equation).
- The role and nature of the partitioning coefficient between discharge and evapotranspiration (which is unknown at any time except asymptotically).

- The significance of the SAS functions with examples.
- The relationship of the present theory with the well-known theory of the instantaneous unit hydrograph.
- We added information and clarified some links of the present theory with Delhez et al. (1999) and Duffy (2010), as shown in Appendix B.

Extensions include

- new relations among the probabilities (including the relation between expectancy of life and forward residence time probabilities);
- an analysis of the partitioning coefficients (which are shown to vary seasonally);
- an explicit formulation of the equations for solutes which would permit direct determination of the SAS on the basis of experimental data;
- tests of the effects of various hypotheses, e.g., assuming a linear model of forward probability and a gamma model for the backward probabilities;

- an extension of Niemi's relation (and a new normalization);
- the presentation of Niemi's relation as a special case of the Bayes theorem; and
- a system of equations from which to obtain the SAS experimentally.

The extension of the theory to any passive substance diluted in water clearly opens the way to new developments of the theory and applications of tracers.

Finally, as a proof of concept, this paper includes examples derived from a real case (Posina River basin) and comes with open-source code that implements the theory, available to any researcher (see Appendix E).

12 Data availability

For interested researchers to replicate or extend our results, our codes are made available at <https://github.com/geoframecomponents>. Instructions for using the code can be found at <http://geoframe.blogspot.com>. All the material, with further information, is also linked at <http://abouthydrology.blogspot.com/search/label/Residencetime>.

Appendix A: Symbols, acronyms, and notation

Symbol	Name	Dimensions
$ae_T(t, t_{in})$	age-ranked evapotranspiration	$L^3 T^{-2}$
$ae_T(t, t_{ex})$	exit time-ranked evapotranspiration	$L^3 T^{-2}$
b	exponent of the nonlinear reservoir model	–
$f(t - t_{in} t_{in})$	time derivative of the relative discharge function	T^{-1}
f_{up}	partitioning coefficient between upper and saturated reservoirs	–
$g(t - t_{in} t_{in})$	time derivative of the relative evapotranspiration function	T^{-1}
$g(T_r)$	incomplete Gamma distribution	T^{-1}
$j(t, t_{in})$	age-ranked rainfall rate	$L^3 T^{-2}$
$j^i(t, t_{in})$	age-ranked input of the substance i	$L^3 T^{-2}$
$k_{1,2}$	reaction's constants	–
$p_S^i(t - t_{in} t)$	travel time backward pdf of the substance i	T^{-1}
$p_{ET}(t - t_{in} t)$	forward evapotranspiration pdf	T^{-1}
$p_{ET}(t - t_{in} t_{in})$	forward evapotranspiration pdf	T^{-1}
$p_J(t_{in})$	marginal pdf of the outflow as discharge	–
$p_{low}(t - t_{in} t)$	travel time backward pdf of the lower storage	T^{-1}
$p_Q(t - t_{in} t)$	travel time backward pdf	T^{-1}
$p_Q(t - t_{in} t_{in})$	travel time forward pdf	T^{-1}
$p_Q(t_{in})$	marginal pdf of the injection times	–
$p_s(T_r t)$	residence time backward pdf	T^{-1}
$p_s(t - t_{in} t_{in})$	residence time forward pdf	T^{-1}
$p_s(t_{ex} - t t)$	life expectancy backward pdf	T^{-1}
$p_{sat}(t - t_{in} t)$	travel time backward pdf of the saturated storage	T^{-1}
$p_{sup}(t - t_{in} t)$	travel time backward pdf of the upper storage	T^{-1}
$q(t, t_{in})$	age-ranked discharge	$L^3 T^{-2}$
$q(t, t_{ex})$	exit time-ranked discharge	$L^3 T^{-2}$
$q^i(t, t_{in})$	age-ranked output of the substance i	$L^3 T^{-2}$
$q_{low}(t, t_{in})$	age-ranked discharge for the lower reservoir	$L^3 T^{-2}$
$q_{sat}(t, t_{in})$	age-ranked discharge for the saturated reservoir	$L^3 T^{-2}$
$r^i(t, t_{in})$	age-ranked sink/source term	$L^3 T^{-2}$
$s(t, t_{in})$	age-ranked water storage	$L^3 T^{-1}$
$s^i(t, t_{in})$	age-ranked water storage of the substance i	$L^3 T^{-2}$
s_{eq}^i	equilibrium storage	$L^3 T^{-1}$
$s_{ex}(t, t_{ex})$	exit time-ranked discharge	$L^3 T^{-1}$
$s_{low}(t, t_{in})$	age-ranked water storage for the lower reservoir	$L^3 T^{-1}$
$s_{up}(t, t_{in})$	age-ranked water storage for the upper reservoir	$L^3 T^{-1}$
$s_{sat}(t, t_{in})$	age-ranked water storage for the saturated reservoir	$L^3 T^{-1}$
t	actual time	T
t_{ex}	exit time	T
t_{in}	injection time	T
t_p	time of the end of the last precipitation considered in the analysis	T
$AE_T(t)$	actual evapotranspiration	$L^3 T^{-1}$
$C_J^i(t)$	concentration in input	–
$C_S^i(t)$	concentration in storage	–
$C_Q^i(t)$	concentration in discharge	–
$E(t)$	potential evapotranspiration	$L^3 T^{-1}$
$\mathcal{F}(t - t_{in} t_{in})$	relative discharge function	–
$\mathcal{G}(t - t_{in} t_{in})$	relative evapotranspiration function	–
$J(t)$	rainfall rates	$L^3 T^{-1}$
$J^i(t)$	input rates of the substance i	$L^3 T^{-1}$
$J(t_{in})$	precipitation at a certain t_{in}	$L^3 T^{-1}$

Symbol	Name	Units
$P_s(t - t_{in} t_{in})$	forward residence time probability function	–
L_e	life expectancy	T
T	travel time	T
T_r	residence time	T
$S(t)$	volume of water stored in a control volume	L^3
$Q(t)$	discharge	$L^3 T^{-1}$
$Q^i(t)$	output rates of the substance i	$L^3 T^{-1}$
Q_1	recharge to the saturated reservoir	$L^3 T^{-1}$
Q_l	runoff produced by the lower reservoir	$L^3 T^{-1}$
Q_{sat}	outflow from the saturated storage	$L^3 T^{-1}$
$R^i(S(t))$	sink/source term	$L^3 T^{-1}$
$R(t)$	recharge to the lower reservoir	$L^3 T^{-1}$
$R(t, t_{in})$	input to the lower reservoir	$L^3 T^{-1}$
$R_{t_{in}}$	sequence of instantaneous impulses at different $t_{in}s$	L^3
$S^i(t)$	stored mass of the substance i stored	L^3
S_{low}	storage in the lower reservoir	L^3
S_{max}	maximum value of the storage	L^3
S_{sat}	amount of water stored in the saturated storage	L^3
S_{up}	storage in the upper reservoir	L^3
$V_{AET}(t, t_{in})$	time integral of the age-ranked evapotranspiration	$L^3 T^{-1}$
$V_S(t_p)$	total volume injected in the volume in $[0, t_p]$	$L^3 T^{-1}$
$V_Q(t, t_{in})$	time integral of the age-ranked discharge	$L^3 T^{-1}$
α	coefficient of the gamma distribution	–
$\delta(t - t_{in})$	Dirac-delta distribution	T^{-1}
γ	coefficient of the gamma distribution	–
λ	coefficient of the nonlinear reservoir model	T
$\mu(t, t_{in})$	age and mass-specific output rate	–
$\omega_{ET}(t, t_{in})$	SAS for evapotranspiration	–
$\omega_{low}(t, t_{in})$	SAS for runoff produced by the lower reservoir	–
$\omega_Q(t, t_{in})$	SAS for discharge	–
$\omega_{Q_1}(t, t_{in})$	SAS for the recharge to the saturated reservoir	–
$\omega_R(t, t_{in})$	SAS for the recharge to the lower reservoir	–
$\omega_{Q_{sat}}(t, t_{in})$	SAS for runoff produced by the saturated storage	–
$\Theta(t_{in})$	partitioning coefficient	–
Γ	Gamma function	–

Appendix B: A little critical review of contributions on age-related equations

Without the need to be comprehensive, since some reviews of the topic were recently made available (Benettin et al., 2013; Hrachowitz et al., 2016), we believe it could be useful to summarize the contributions of some milestone papers in relation to ours. We choose here those references that have a direct theoretical influence, and leave out those already cited in the main text having more relevance in connection with experimental research and model identification. We also do not mention Dagan's important work that we already commented on in Sect. 1.

We also do not mention travel time theories which emanate from the instantaneous unit hydrograph, since they were extensively discussed in Rigon et al. (2016). The formal center of this paper's contribution is Eq. (9). Being substantially a mass budget, it can be argued that it has been central in many scientific disciplines and hydrology's sub-disciplines. However, as stated in the main text, van der Velde et al. (2012) is the first contribution where the equation appears in the form we use.

One of the older papers on this subject is Campana (1987), who wrote an equation for water age distribution, but he used a discrete time formalism that is not easily translatable into our derivation. The remarkable work of Carrera and Medina (1999) paid direct attention to the question of water ages by finding one partial differential equation (pde) for the residence time distributions and one pde for water ages. A similar approach was also followed by Ginn (1999). Their contributions fall in the area of advection–dispersion types of equations and were implemented almost at the same time in Delhez et al. (1999) and Deleersnijder et al. (2001). The latter was concerned with the oceanography domain. Parallel developments in atmospheric sciences are instead reviewed in Waugh and Hall (2002).

All the researchers above worked at a finer scale than ours, describing fields of properties dependent on location, time, and age, while we work at a scale integrated over a whole control volume (a catchment or a hydrologic response unit), where any reference to space disappears. Let us call their approach “local” and our approach “spatially integrated”. Their local approach directly used concentrations, while our spatially integrated one placed the emphasis on residence (and travel) time probabilities. Both concentration and probability vary between zero and one, but the first is mass (volume) normalized over the total mass (volume) of all substances present in a given location, the second is the mass (volume) of a substance injected at a certain time over the mass (volume) of the same substance coming from all the injection times. We have shown in Sect. 9 how the two approaches match at the spatially integrated scale following the work of Duffy (2010).

Another relevant difference between the local and spatially integrated theories is the different parameterizations

of the fluxes. In our treatment we distinguish the sources (precipitation, recharge, etc.) and the outputs (discharges and evapotranspiration). Local theories usually implement an advection–dispersion term and include a sink–source term, which is important only when solutes are involved. We also introduced a sink–source term, but when appropriate, in Sect. 9.

An explicit integration of the local theory to obtain the spatially integrated one was recently presented in Duffy (2010), who first made it clear that the equation for concentration and mass budget form a dynamical system. He also added an age equation which we do not need in our formalism.

Porporato and Calabrese (2015) and Calabrese and Porporato (2015), in their effort to merge the travel time approach with population dynamics dated the age-ranked equation back to the work of M'Kendrick (1925) and Foerster (1959). However, the M'Kendrick (1925) and Foerster (1959) version of the master equation emphasizes more the birth and death terms (i.e., the sink and sources of the local theories mentioned above), instead of the flows at the interfaces, as is usually done when dealing with hydrological budgets. Even if this approach is interesting, as Rinaldo et al. (2015) note, it is very difficult to work out hydrology in terms of the loss function which is, instead, central in the population dynamics. If population dynamics theories could be considered one of our ancestors, they are not focused directly on the same information. The same argument can be used to comment on the work of Rotenberg (1972).

A different but interleaved group of papers, e.g., Kirchner (2016a, b), and references therein, Hrachowitz et al. (2010), analyzes the topic of tracer flow by directly assigning the backward probability in Eq. (60). This approach, as well as IUH-related ones (shown in the main text), could determine the forward travel time distribution through the Niemi relation. However, as shown in Appendix D, this approach does not respect the definition of probabilities we gave, and actually has some mathematical inconsistency which should, in future, be corrected.

Appendix C: An example of generalization to many embedded reservoirs

In the literature we cited in the main text, it seems usually recognized that a single reservoir is not able to reproduce proper discharge and tracer behavior, and a few “embedded” reservoirs are therefore used in models. For instance, concerns regarding the discrepancies between the velocity of the solute transport and celerity of the pressure signals that travel across the control volumes must be addressed with an appropriate choice of embedded “groundwater” reservoirs.

The theory developed in the main text can be easily extended to these cases. As an illustrative example we take a simple model from Birkel et al. (2010) and Soulsby et al. (2015).

Their system is composed of three reservoirs (e.g., Fig. 2 in Soulsby et al., 2015). The lower reservoir is responsible for groundwater description and represents a large storage which also has the function of dumping the solute concentration. The other two reservoirs are at the surface. The first takes precipitation J , produces evapotranspiration ET, and returns recharge R for the lower reservoir and some outflow that goes into the second reservoir. This second reservoir is assumed to reproduce the behavior of a saturated riparian zone that originates the surface runoff flowing into channels. The budget equations are written below.

$$\frac{dS_{\text{sup}}(t)}{dt} = (1 - f_{\text{sup}}) J(t) - \text{ET}(t) - Q_1(t) - R(t), \quad (\text{C1})$$

where S_{sup} is the amount of water stored in the upper reservoir, f_{sup} is a coefficient that separates the amount of water and evapotranspiration that pertain to the upper storage from those of the saturated reservoir, Q_1 is the discharge into the saturated reservoir, and R is the recharge to the groundwater (lower) storage. In this budget equation f_{sup} is a given parameter, and ET is a measured function (but making it a modeled quantity dependent on water storage does not change anything substantial). Both the other outflows are determined as linear functions of the storage S_{sup} as

$$Q_1(t) = a S_{\text{sup}}(t) \quad (\text{C2})$$

and

$$R(t) = b S_{\text{sup}}(t), \quad (\text{C3})$$

where the two coefficients a and b are assumed to be given, after an appropriate process of calibration. With all of these assumptions Eq. (C1) is analytically solvable, and S_{sup} can be considered known. Applying the theory developed in the main text, the age-ranked equations for this storage are given by

$$\begin{aligned} \frac{dS_{\text{sup}}(t) p_{\text{sup}}(t - t_{\text{in}}|t)}{dt} = & (1 - f_{\text{sup}}) J(t_{\text{in}}) \delta(t - t_{\text{in}}) \\ & - \text{ET}(t) - Q_1(t) \omega_{Q_1}(t, t_{\text{in}}) \\ & p_{\text{sup}}(t - t_{\text{in}}|t) - \omega_R(t, t_{\text{in}}) \\ & R(t) p_{\text{sup}}(t - t_{\text{in}}|t). \end{aligned} \quad (\text{C4})$$

Once the two SASs in Eq. (C4), i.e., $\omega_{Q_1}(t, t_{\text{in}})$ and $\omega_R(t, t_{\text{in}})$, are assigned, the probability $p(t - t_{\text{in}}|t)$ and the age-ranked storage $s(t, t_{\text{in}})$ can also be determined. As usual, in these cases, the authors assumed $\omega_{Q_1}(t, t_{\text{in}}) = \omega_R(t, t_{\text{in}}) = 1$.

The lower reservoir obeys the following budget equation:

$$\frac{dS_{\text{low}}(t)}{dt} = R(t) - k S_{\text{low}}(t), \quad (\text{C5})$$

where $Q_2 = k S_{\text{low}}(t)$ is the runoff produced by seepage, and k is a calibration coefficient. Since $R(t)$ is known from solving the upper reservoir, Eq. (C5) is also solvable. Equation (C5) can then be associated with the age-ranked master equation

$$\begin{aligned} \frac{dS_{\text{low}}(t) p_{\text{low}}(t - t_{\text{in}}|t)}{dt} = & R(t, t_{\text{in}}) - b S_{\text{low}}(t) \omega_{\text{low}}(t, t_{\text{in}}) \\ & p_{\text{low}}(t - t_{\text{in}}|t), \end{aligned} \quad (\text{C6})$$

where $R(t, t_{\text{in}})$ is the input to the second reservoir which comes with aged waters, and is given by solving Eq. (C4) because it is $R(t, t_{\text{in}}) = R(t) p(t - t_{\text{in}}|t)$. In turn, Eq. (C6) is solvable and can be used to obtain all the age-ranked functions relative to the lower storage. Notably, all the above four differential equations are linear and therefore analytically solvable as functions of the inputs, even if the analytic solutions are not reported here.

Finally, the storage equation for the saturated storage is

$$\frac{dS_{\text{sat}}(t)}{dt} = f_{\text{sup}}(J(t) - \text{ET}(t)) + Q_1(t) - Q_{\text{sat}}(t), \quad (\text{C7})$$

where Q_1 is the input from the upper reservoir and the outflow to channels is described with a nonlinear reservoir law,

$$Q_{\text{sat}}(t) = r S_{\text{sat}}^{1+\beta}, \quad (\text{C8})$$

and r and β are two further coefficients to be calibrated. In total, this system of embedded reservoirs contains five parameters for calibration: a, b, k, r , and β .

Following the same arguments as for the other two reservoirs, the age-ranked version of the budget becomes

$$\begin{aligned} \frac{dS_{\text{sat}}(t) p_{\text{sat}}(t - t_{\text{in}}|t)}{dt} = & f_{\text{sup}}(J(t_{\text{in}}) \delta(t - t_{\text{in}}) - \text{ET}(t)) \\ & + Q_1(t, t_{\text{in}}) - Q_{\text{sat}}(t) \omega_{Q_{\text{sat}}}(t, t_{\text{in}}) \\ & p_{\text{sat}}(t - t_{\text{in}}|t). \end{aligned} \quad (\text{C9})$$

As in the case of the lower reservoir, the saturated reservoir receives aged waters from the upper one. The equation is not analytically solvable, but well-known numerical methods can produce the solution easily.

The overall system is the sum of the three reservoirs where

$$S(t) = S_{\text{sup}}(t) + S_{\text{low}}(t) + S_{\text{sat}}(t) \quad (\text{C10})$$

and

$$s(t, t_{\text{in}}) = s_{\text{sup}}(t, t_{\text{in}}) + s_{\text{low}}(t, t_{\text{in}}) + s_{\text{sat}}(t, t_{\text{in}}). \quad (\text{C11})$$

Therefore

$$p_s(t - t_{\text{in}}|t) := \frac{s(t, t_{\text{in}})}{S(t)} \quad (\text{C12})$$

is the backward residence time distribution for the compound system. Because

$$Q(t) = Q_{\text{low}}(t) + Q_{\text{sat}}(t), \quad (\text{C13})$$

and

$$q(t, t_{\text{in}}) = q_{\text{low}}(t, t_{\text{in}}) + q_{\text{sat}}(t, t_{\text{in}}), \quad (\text{C14})$$

the global travel time distribution is

$$p_Q(t - t_{in}|t) := \frac{q(t, t_{in})}{Q(t)}. \quad (C15)$$

It follows that the compound systems behaves like having a SAS given by

$$\omega(t, t_{in}) = \frac{p_s(t - t_{in}|t)}{p_Q(t - t_{in}|t)}. \quad (C16)$$

On the basis of the global probability distribution functions, the behavior of a tracer i can be obtained from Niemi's relations as

$$C_Q^i(t) = \int_0^{\min(t, t_p)} p_Q(t - t_{in}|t) C_J^i(t_{in}) dt_{in}. \quad (C17)$$

This concentration does not distinguish between waters coming from the saturated and lower reservoirs. However, the theory can do it by substituting Eq. (C17) in place of $p_Q(t - t_{in}|t)$, $p_{Q_{low}}(t - t_{in}|t)$, or $p_{Q_{sat}}(t - t_{in}|t)$, because it must be

$$p_Q(t - t_{in}|t) = (1 - \Theta_Q(t)) p_{Q_{low}}(t - t_{in}|t) + \Theta_Q(t) p_{Q_{sat}}(t - t_{in}|t) \quad (C18)$$

where

$$\Theta_Q(t) = \frac{Q_{sat}(t)}{Q_{sat}(t) + Q_{low}(t)} \quad (C19)$$

is the appropriate partitioning coefficient. To obtain the last equations, it is sufficient to apply the definitions for the probabilities. The case treated is general enough to show that any set of coupled reservoirs can be analyzed from the travel time point of view, no matter how complex the system is.

Appendix D: An observation on fixing the functional form of the backward probability

It can be observed that the backward probability, as defined in Eq. (10), is quite restrictive and not very compatible with the assumption of a time-invariant backward distribution, often made in the literature (e.g., Kirchner et al., 2000; Kirchner, 2016a; Hrachowitz et al., 2010). Most of these papers use a gamma distribution, i.e.,

$$g(T_R) := \frac{T_r^{\alpha+1} e^{-\frac{T_r}{\gamma}}}{\gamma^\alpha \Gamma(\alpha)}, \quad (D1)$$

where g is the incomplete gamma distribution, $T_r := t - t_{in}$ is the residence time, α and γ are the two coefficients of the incomplete Γ distribution, and Γ is the gamma function. $g(T_r)$ in Eq. (D1) is certainly a distribution, though over the whole domain of T_r . However, Eq. (10) requires that $g(T_r)$ would be a probability for any clock time t , i.e., that

$$\int_0^{\min(t, t_p)} p_Q(t - t_{in}|t) dt_{in} = 1. \quad (D2)$$

This is clearly not obtained with Eq. (D1) (or any other classical distribution), and, in fact,

$$\int_0^{\min(t, t_p)} \frac{(t - t_{in})^{\alpha+1} e^{-\frac{(t-t_{in})}{\gamma}}}{\gamma^\alpha \Gamma(\alpha)} dt_{in} \neq 1, \quad (D3)$$

where in the formula the travel time T_r has been explicitly written as a function of t and t_{in} . It could be argued that the above integral could be approximately equal to unity in real cases, and, as seen in the success of gamma-based approaches to interpret experimental data, this could be true.

However, a better choice for the backward probability should be a little more complex. For instance,

$$p_Q(t - t_{in}|t) = \frac{g(t - t_{in})}{\int_0^{\min(t, t_p)} g(t - t_{in}) dt_{in}} = \frac{\frac{(t-t_{in})^{\alpha+1} e^{-\frac{(t-t_{in})}{\gamma}}}{\gamma^\alpha \Gamma(\alpha)}}{\int_0^{\min(t, t_p)} \frac{(t-t_{in})^{\alpha+1} e^{-\frac{(t-t_{in})}{\gamma}}}{\gamma^\alpha \Gamma(\alpha)} dt_{in}} \quad (D4)$$

works the right way.

Acknowledgements. The authors acknowledge Trento University project CLIMAWARE (<http://abouthydrology.blogspot.it/search/label/CLIMAWARE>) and European Union FP7 Collaborative Project GLOBAQUA (Managing the effects of multiple stressors on aquatic ecosystems under water scarcity, grant no. 603629-ENV-2013.6.2.1) that partially financed this research. They also thank Aldo Fiori for having shown them some relevant literature on the subject. We thank Wuletawu Abera for having provided his Posina catchment simulations. Finally we thank Markus Hrachowitz, Paolo Benettin, and Daniel Wilusz for their work that helped to enhance our initial manuscript with their reviews.

Edited by: G. Di Baldassarre

Reviewed by: P. B. Benettin and M. Hrachowitz

References

- Ali, M., Fiori, A., and Russo, D.: A comparison of travel-time based catchment transport models, with application to numerical experiments, *J. Hydrol.*, 511, 605–618, 2014.
- Benettin, P., Rinaldo, A., and Botter, G.: Kinematics of age mixing in advection-dispersion models, *Water Resour. Res.*, 49, 8539–8551, 2013.
- Benettin, P., Rinaldo, A., and Botter, G.: Tracking residence times in hydrological systems: forward and backward formulations, *Hydrol. Process.*, 29, 5203–5213, 2015.
- Berman, E. S., Gupta, M., Gabrielli, C., Garland, T., and McDonnell, J. J.: High-frequency field-deployable isotope analyzer for hydrological applications, *Water Resour. Res.*, 45, W10201, doi:10.1029/2009WR008265, 2009.
- Birkel, C., Tetzlaff, D., Dunn, S., and Soulsby, C.: Towards a simple dynamic process conceptualization in rainfall–runoff models using multi-criteria calibration and tracers in temperate, upland catchments, *Hydrol. Process.*, 24, 260–275, 2010.
- Birkel, C., Soulsby, C., and Tetzlaff, D.: Modelling catchment-scale water storage dynamics: reconciling dynamic storage with tracer-inferred passive storage, *Hydrol. Process.*, 25, 3924–3936, 2011.
- Birkel, C., Soulsby, C., and Tetzlaff, D.: Developing a consistent process-based conceptualization of catchment functioning using measurements of internal state variables, *Water Resour. Res.*, 50, 3481–3501, 2014.
- Botter, G., Bertuzzo, E., and Rinaldo, A.: Transport in the hydrologic response: Travel time distributions, soil moisture dynamics, and the old water paradox, *Water Resour. Res.*, 46, W03514, doi:10.1029/2009WR008371, 2010.
- Botter, G., Bertuzzo, E., and Rinaldo, A.: Catchment residence and travel time distributions: The master equation, *Geophys. Res. Lett.*, 38, L11403, doi:10.1029/2011GL047666, 2011.
- Butcher, J. C.: The numerical analysis of ordinary differential equations: Runge–Kutta and general linear methods, Wiley-Interscience, New York, NY, USA, 1987.
- Calabrese, S. and Porporato, A.: Linking age, survival, and transit time distributions, *Water Resour. Res.*, 51, 1944–1973, doi:10.1002/2015WR017785, 2015.
- Campana, M. E.: Generation of Ground-Water Age Distributions, *Ground Water*, 25, 51–58, 1987.
- Carrera, J. and Medina, A.: A discussion on the calibration of regional groundwater models, in: International Workshop of Eng's Field of Interest on Soil and Water, Leuven (Belgium), 24–26 November 1999, Wageningen, 1999.
- Clark, M. P., McMillan, H. K., Collins, D. B., Kavetski, D., and Woods, R. A.: Hydrological field data from a modeller's perspective: Part 2: process-based evaluation of model hypotheses, *Hydrol. Process.*, 25, 523–543, 2011.
- Coddington, E. A. and Levinson, N.: Theory of ordinary differential equations, McGraw-Hill, New York, 1955.
- Cornaton, F. and Perrochet, P.: Groundwater age, life expectancy and transit time distributions in advective–dispersive systems: 1. Generalized reservoir theory, *Adv. Water Resour.*, 29, 1267–1291, 2006.
- Cvetkovic, V.: How accurate is predictive modeling of groundwater transport? A case study of advection, macrodispersion, and diffusive mass transfer at the Forsmark site (Sweden), *Water Resour. Res.*, 49, 5317–5327, 2013.
- Cvetkovic, V., Carstens, C., Selroos, J.-O., and Destouni, G.: Water and solute transport along hydrological pathways, *Water Resour. Res.*, 48, W06537, doi:10.1029/2011WR011367, 2012.
- Dagan, G.: Solute transport in heterogeneous porous formations, *J. Fluid Mech.*, 145, 151–177, 1984.
- Deleersnijder, E., Campin, J.-M., and Delhez, E. J.: The concept of age in marine modelling: I. Theory and preliminary model results, *J. Mar. Syst.*, 28, 229–267, 2001.
- Delhez, E. J., Campin, J.-M., Hirst, A. C., and Deleersnijder, E.: Toward a general theory of the age in ocean modelling, *Ocean Model.*, 1, 17–27, 1999.
- Dooge, J. C. I.: The linear theory of hydrologic systems, *US Dep. Agric. Tech. Bull.*, p. 1468, 1973.
- Duffy, C. J.: Dynamical modelling of concentration–age–discharge in watersheds, *Hydrol. Process.*, 24, 1711–1718, 2010.
- Fenicia, F., Savenije, H. H., Matgen, P., and Pfister, L.: Understanding catchment behavior through stepwise model concept improvement, *Water Resour. Res.*, 44, W01402, doi:10.1029/2006WR005563, 2008.
- Foerster, H. V.: Some remarks on changing populations, The kinetics of cellular proliferation, in: *The Kinetics of Cellular Proliferation*, edited by: Stohman Jr., F., Grune & Stratton, New York, 382–407, 1959.
- Ginn, T. R.: On the distribution of multicomponent mixtures over generalized exposure time in subsurface flow and reactive transport: Foundations, and formulations for groundwater age, chemical heterogeneity, and biodegradation, *Water Resour. Res.*, 35, 1395–1407, 1999.
- Harman, C.: Internal versus external controls on age variability: Definitions, origins and implications in a changing climate, in: 2015 AGU Fall Meeting, Agu, San Francisco, CA, USA, 2015a.
- Harman, C. J.: Time-variable transit time distributions and transport: Theory and application to storage-dependent transport of chloride in a watershed, *Water Resour. Res.*, 51, 1–30, 2015b.
- Hrachowitz, M., Soulsby, C., Tetzlaff, D., Malcolm, I., and Schoups, G.: Gamma distribution models for transit time estimation in catchments: Physical interpretation of parameters and implications for time-variant transit time assessment, *Water Resour. Res.*, 46, W10536, doi:10.1029/2010WR009148, 2010.
- Hrachowitz, M., Savenije, H., Bogaard, T. A., Tetzlaff, D., and Soulsby, C.: What can flux tracking teach us about water age distribution patterns and their temporal dynamics?, *Hydrol. Earth Syst. Sci.*, 17, 533–564, doi:10.5194/hess-17-533-2013, 2013.

- Hrachowitz, M., Benettin, P., Breukelen, B. M., Fovet, O., Howden, N. J., Ruiz, L., Velde, Y., and Wade, A. J.: Transit times – the link between hydrology and water quality at the catchment scale, *Wiley Interdisciplinary Reviews: Water*, 3, 629–657, doi:10.1002/wat2.1155, 2016.
- Kirchner, J. W.: Getting the right answers for the right reasons: Linking measurements, analyses, and models to advance the science of hydrology, *Water Resour. Res.*, 42, W03S04, doi:10.1029/2005WR004362, 2006.
- Kirchner, J. W.: Catchments as simple dynamical systems: Catchment characterization, rainfall-runoff modeling, and doing hydrology backward, *Water Resour. Res.*, 45, W02429, doi:10.1029/2008WR006912, 2009.
- Kirchner, J. W.: Aggregation in environmental systems – Part 1: Seasonal tracer cycles quantify young water fractions, but not mean transit times, in spatially heterogeneous catchments, *Hydrol. Earth Syst. Sci.*, 20, 279–297, doi:10.5194/hess-20-279-2016, 2016a.
- Kirchner, J. W.: Aggregation in environmental systems – Part 2: Catchment mean transit times and young water fractions under hydrologic nonstationarity, *Hydrol. Earth Syst. Sci.*, 20, 299–328, doi:10.5194/hess-20-299-2016, 2016b.
- Kirchner, J. W., Feng, X., and Neal, C.: Fractal stream chemistry and its implications for contaminant transport in catchments, *Nature*, 403, 524–527, 2000.
- Klemeš, V.: Dilettantism in hydrology: Transition or destiny?, *Water Resour. Res.*, 22, 177S–188S, doi:10.1029/WR022i09Sp0177S, 1986.
- McDonnell, J. J. and Beven, K.: Debates – The future of hydrological sciences: A (common) path forward? A call to action aimed at understanding velocities, celerities and residence time distributions of the headwater hydrograph, *Water Resour. Res.*, 50, 5342–5350, 2014.
- McMillan, H., Tetzlaff, D., Clark, M., and Soulsby, C.: Do time-variable tracers aid the evaluation of hydrological model structure? A multimodel approach, *Water Resour. Res.*, 48, W05501, doi:10.1029/2011WR011688, 2012.
- M’Kendrick, A.: Applications of mathematics to medical problems, *Proc. Edinburgh Math. Soc.*, 44, 98–130, 1925.
- Niemi, A. J.: Residence time distributions of variable flow processes, *Int. J. Appl. Radiat. Isotop.*, 28, 855–860, 1977.
- Porporato, A. and Calabrese, S.: On the probabilistic structure of water age, *Water Resour. Res.*, 51, 3588–3600, 2015.
- Rigon, R., Bancheri, M., Formetta, G., and de Lavenne, A.: The geomorphological unit hydrograph from a historical-critical perspective, *Earth Surf. Proc. Land.*, 41, 27–37, 2016.
- Rinaldo, A. and Rodriguez-Iturbe, I.: Geomorphological theory of the hydrological response, *Hydrol. Process.*, 10, 803–829, 1996.
- Rinaldo, A., Beven, K. J., Bertuzzo, E., Nicotina, L., Davies, J., Fiori, A., Russo, D., and Botter, G.: Catchment travel time distributions and water flow in soils, *Water Resour. Res.*, 47, W07537, doi:10.1029/2011WR010478, 2011.
- Rinaldo, A., Benettin, P., Harman, C. J., Hrachowitz, M., McGuire, K. J., Van Der Velde, Y., Bertuzzo, E., and Botter, G.: Storage selection functions: A coherent framework for quantifying how catchments store and release water and solutes, *Water Resour. Res.*, 51, 4840–4847, 2015.
- Rodriguez-Iturbe, I. and Valdes, J. B.: The geomorphologic structure of hydrologic response, *Water Resour. Res.*, 15, 1409–1420, 1979.
- Rodriguez-Iturbe, I., Porporato, A., Ridolfi, L., Isham, V., and Cox, D.: Probabilistic modelling of water balance at a point: the role of climate, soil and vegetation, *P. Roy. Soc. Lond. A: Mathematical*, 455, 3789–3805, doi:10.1098/rspa.1999.0477, 1999.
- Rotenberg, M.: Theory of population transport, *J. Theor. Biol.*, 37, 291–305, 1972.
- Seibert, J. and McDonnell, J. J.: On the dialog between experimentalist and modeler in catchment hydrology: Use of soft data for multicriteria model calibration, *Water Resour. Res.*, 38, 23-1–23-14, doi:10.1029/2001WR000978, 2002.
- Soulsby, C., Birkel, C., Geris, J., Dick, J., Tunaley, C., and Tetzlaff, D.: Stream water age distributions controlled by storage dynamics and nonlinear hydrologic connectivity: Modeling with high-resolution isotope data, *Water Resour. Res.*, 51, 7759–7776, 2015.
- Tetzlaff, D., McDonnell, J., Uhlenbrook, S., McGuire, K., Bogaart, P., Naef, F., Baird, A., Dunn, S., and Soulsby, C.: Conceptualizing catchment processes: simply too complex?, *Hydrol. Process.*, 22, 1727–1730, 2008.
- Uhlenbrook, S. and Leibundgut, C.: Process-oriented catchment modelling and multiple-response validation, *Hydrol. Process.*, 16, 423–440, 2002.
- van der Velde, Y., Torfs, P., Zee, S., and Uijlenhoet, R.: Quantifying catchment-scale mixing and its effect on time-varying travel time distributions, *Water Resour. Res.*, 48, W06536, doi:10.1029/2011WR011310, 2012.
- Waugh, D. and Hall, T.: Age of stratospheric air: Theory, observations, and models, *Rev. Geophys.*, 40, 1-1–1-26, doi:10.1029/2000RG000101, 2002.