

Supporting Information:

A glucosyl platinum(II) complex inhibits the aggregation of the C-terminal region of A β peptide

*Sara La Manna*¹, *Marilisa Leone*², *Ilaria Iacobucci*^{3, 4}, *Alfonso Annuziata*³, *Concetta Di Natale*⁵,
*Elena Lagreca*⁵, *Anna Maria Malfitano*⁶, *Francesco Ruffo*³, *Antonello Merlino*³, *Maria Monti*^{3,4,*}
and *Daniela Marasco*^{1,2,*}

¹Department of Pharmacy, University of Naples “Federico II”, 80131, Naples, Italy

²Institute of Biostructures and Bioimaging - CNR, 80134, Naples, Italy

³Department of Chemical Sciences, University of Naples “Federico II”, 80126, Naples, Italy

⁴CEINGE Biotecnologie Avanzate S.c.a r.l., “University of Naples Federico II”, 80131, Naples, Italy

⁵Interdisciplinary Research Centre on Biomaterials (CRIB), Department of Ingegneria Chimica dei Materiali e della Produzione Industriale (DICMAPI), University “Federico II”, 80125 Naples, Italy

⁶Department of Translational Medical Science, University of Naples “Federico II”, 80131, Naples, Italy

Table of contents:

Figure S1: Time course of ThT fluorescence emission intensity of A β ₁₋₄₂, alone and upon the incubation with 1Pt_{dep} at the indicated peptide to metal molar ratio. Values are the average of two measurements.

Figure S2: ESI-MS spectra of the A β ₂₁₋₄₀ and A β ₂₅₋₃₅ alone.

Figure S3: ESI-MS spectra of A β ₂₁₋₄₀ peptide incubated with 1Pt for 0h and 24h.

Figure S4: ESI-MS spectra of A β ₂₅₋₃₅ peptide incubated with 1Pt for 0h and 24h.

Figure S5: Overlay of CD spectra at 0 and 24 h of 1Pt_{dep}.

Figure S6: 2D [^1H , ^1H] TOCSY spectrum of $\text{A}\beta_{25-35}$ recorded at $t=4\text{h}$.

Figure S7: Overlay of 1D [^1H] NMR spectra of 1Pt_{dep} plus $\text{A}\beta_{25-35}$.

Figure S8: Comparison between 1D [^1H] NMR spectra of 1Pt_{dep} alone at $t=0$ and 1Pt_{dep} in presence of $\text{A}\beta_{25-35}$ at $t=4$ hours.

Figure S9: Time course UV-vis spectra of 1Pt at $50\ \mu\text{M}$ in 2% - DMSO phosphate buffer 10 mM at pH 7.4.

Figure S10: Cell survival of SH-SY5Y cells treated with $\text{A}\beta_{21-40}$ and $\text{A}\beta_{25-35}$ ($100\ \mu\text{M}$) alone or with 1Pt_{dep} or 1Pt at 1:5 molar ratio at three time points: 0, 2 and 24 hours. Cells with peptides were incubated for 24h and then processed for MTT test. (* $p < 0.05$, ** $p < 0.005$, # $p < 0.001$, &math p < 0.0001 at statistical analysis of one experiment performed in triplicates).

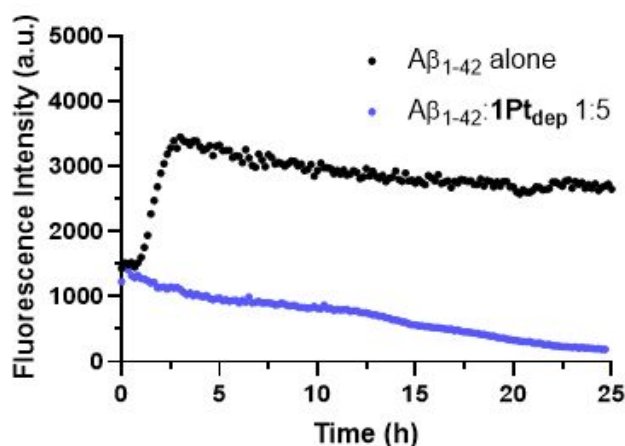


Figure S1. Time course of ThT fluorescence emission intensity of $\text{A}\beta_{1-42}$, alone and upon the incubation with 1Pt_{dep} at the indicated peptide to metal molar ratio. Values are the average of two measurements.

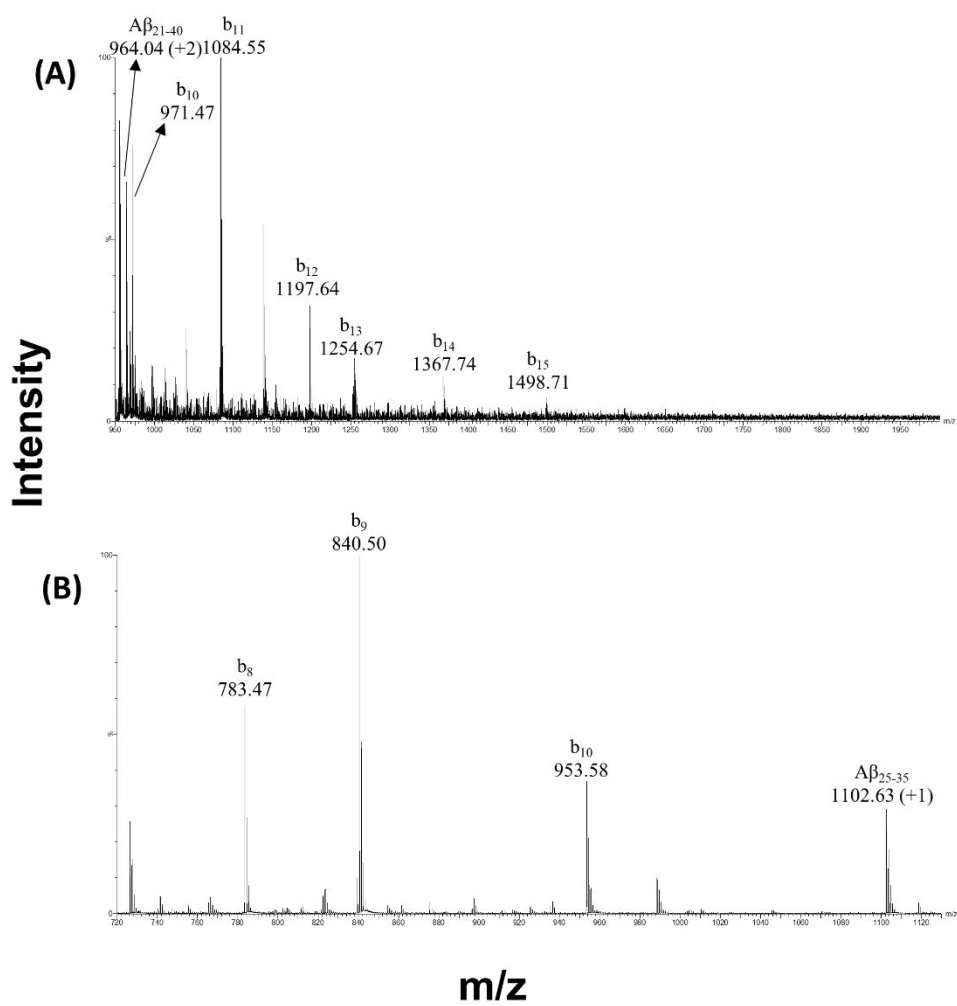


Figure S2. ESI-MS spectra of the (A) $A\beta_{21-40}$ and (B) $A\beta_{25-35}$ alone. Fragmentation ions are also reported.

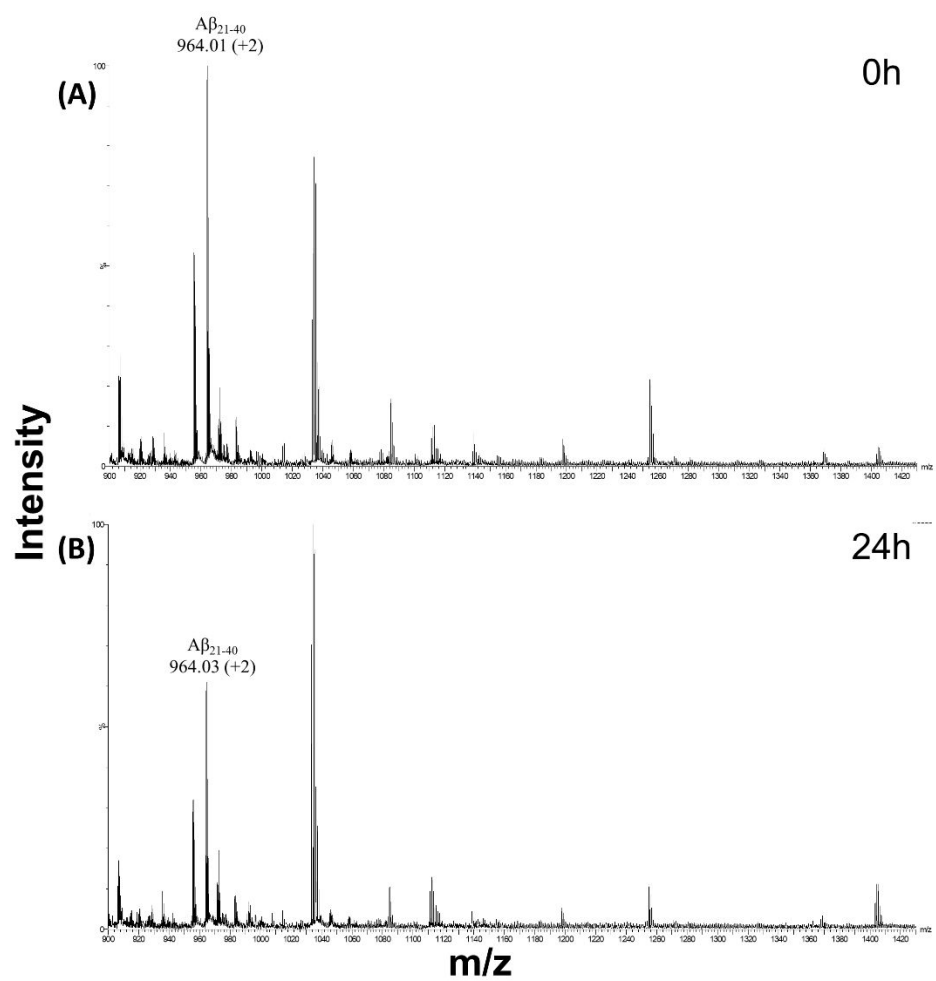


Figure S3. ESI-MS spectra of $A\beta_{21-40}$ peptide incubated with 1Pt for (A) 0h and (B) 24h.

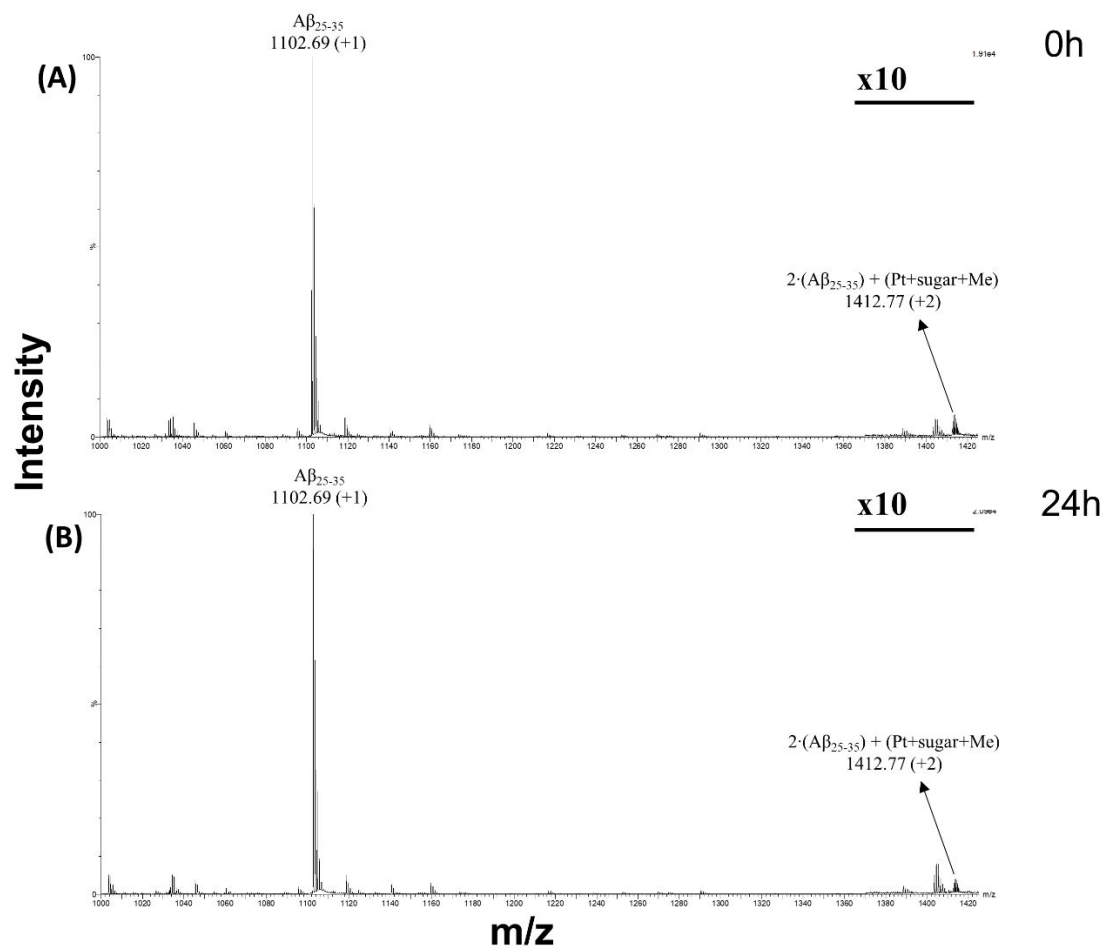


Figure S4. ESI-MS spectra of $A\beta_{25-35}$ peptide incubated with 1Pt for (A) 0h and (B) 24h. The m/z range between 1300 and 1500 is 10 times magnified.

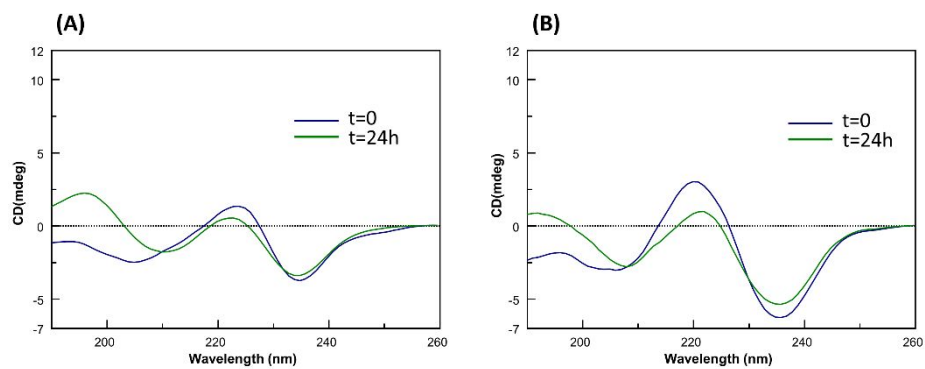


Figure S5. Overlay of CD spectra at 0 and 24 h of 1Pt_{dep} at (A) $125 \mu\text{M}$ and (B) $250 \mu\text{M}$.

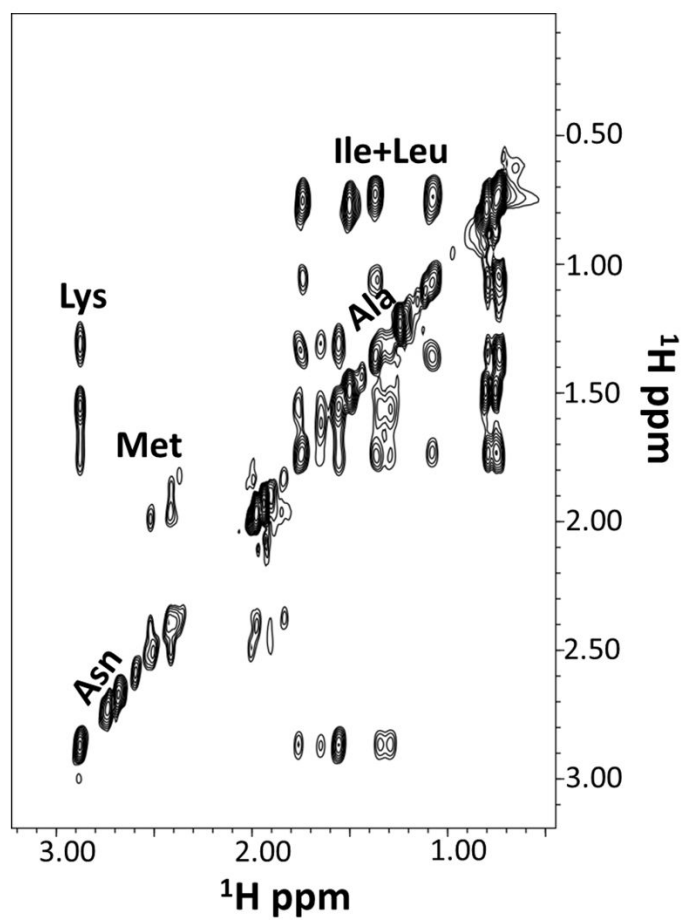


Figure S6. 2D [^1H , ^1H] TOCSY spectrum of $\text{A}\beta_{25-35}$ recorded at $t=4\text{h}$. Correlations arising from cH_2 and cH_3 side chain protons can be seen in the reported expansion.

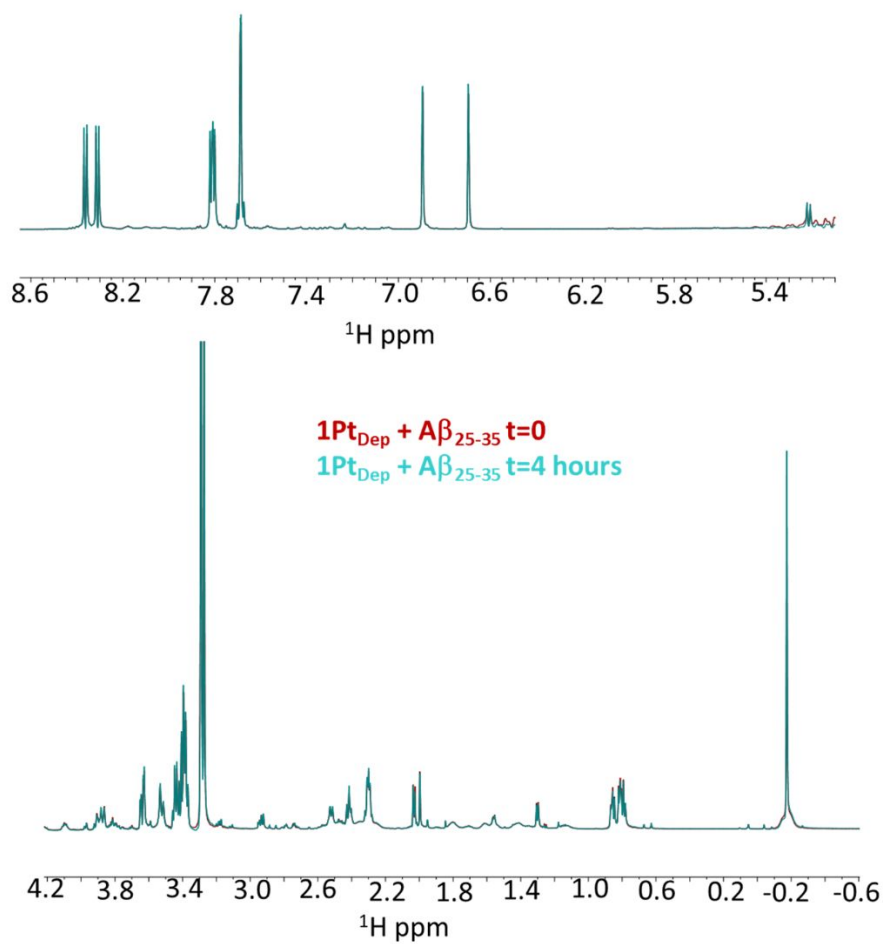


Figure S7. Overlay of 1D [^1H] NMR spectra of **1Pt_{Dep}** (2 mM) plus A β ₂₅₋₃₅ (400 μM) at t=0 (red) and after four hours (cyan).

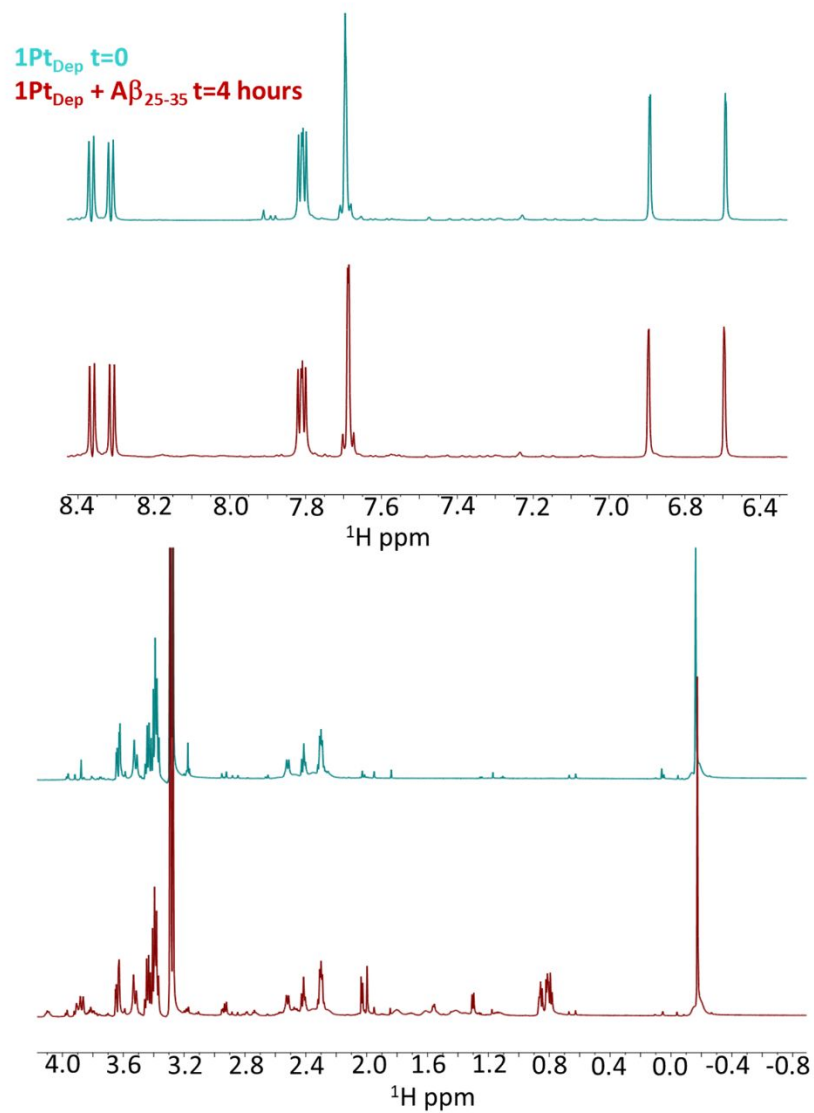


Figure S8. Comparison between 1D [¹H] NMR spectra of **1Pt_{dep}** alone at t=0 (cyan) and **1Pt_{dep}** in presence of **Aβ₂₅₋₃₅** at t=4 hours (red).

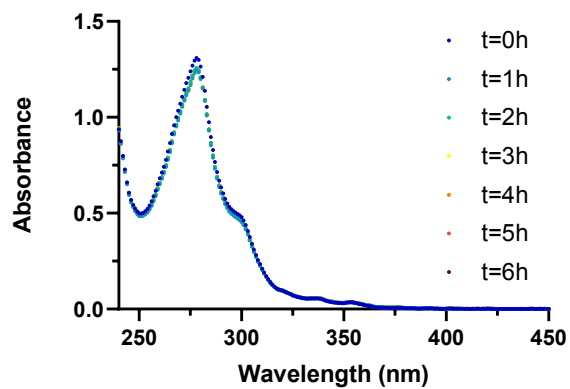


Figure S9. Time course UV-vis spectra of **1Pt** at 50 μM in 2% - DMSO phosphate buffer 10 mM at pH 7.4.

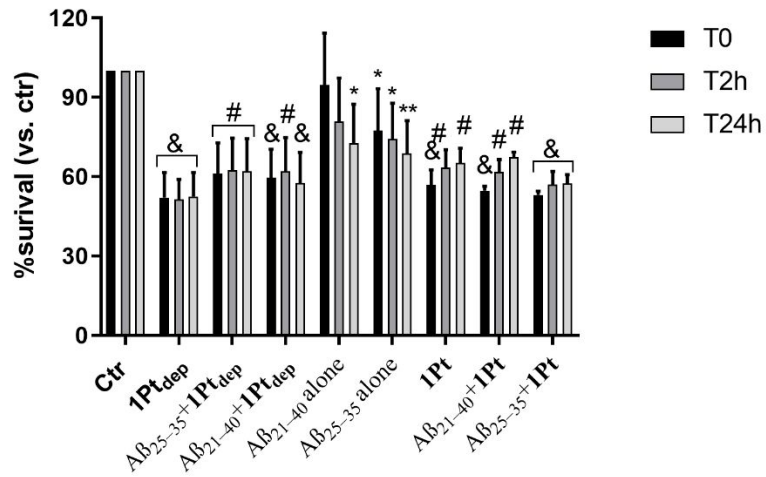


Figure S10. Cell survival of SH-SY5Y cells treated with A β_{21-40} and A β_{25-35} (100 μ M) alone or with 1Pt_{dep} or 1Pt at 1:5 molar ratio at three time points: 0, 2 and 24 hours. Cells with peptides were incubated for 24h and then processed for MTT test. (*p < 0.05, **p < 0.005, #p < 0.001, &p < 0.0001 at statistical analysis of one experiment performed in triplicates).