



Consiglio Nazionale delle Ricerche

***The Security Procedure for Information Management  
on INDUCE Web-Server***

*Daniele Azzarelli, Massimo Martinelli, Ovidio Salvetti*

B4-13  
lug-2000



Date: 15.06.2000	Reference N°: <u>TR-2140-IEI-02</u>	Revision: I	Pages: 1/12
			Annexes: -

## ***The Security Procedure for Information Management on INDUCE Web-Server***

*Daniele Azzarelli, Massimo Martinelli, Ovidio Salvetti*

**IEI-CNR**  
**Pisa Research Area, S. Cataldo**  
**Via Alfieri 1, 56010 Ghezzano SGT (Pisa)**



<b>Date:</b> 15.06.2000	<b>Reference N°:</b> <u>TR-2140-IEI-02</u>	<b>Revision:</b> 1	<b>Pages:</b> 2/12
			<b>Annexes:</b> .

## Summary

<u>Aim of this document</u> .....	3
<u>Scheme of the PROCEDURE</u> .....	3
<u>Basic Resources</u> .....	4
<u>System Configuration</u> .....	4
<u>The First Connection</u> .....	8
<u>Steps for Writing in a Secure Way</u> .....	9
<u>Steps for Reading in a secure way</u> .....	12
<u>End of Session</u> .....	12
<u>Sharing information with other INDUCE Partners</u> .....	12



Date: 15.06.2000	Reference N°: <u>TR-2140-IEI-02</u>	Revision: 1	Pages: 3/12
			Annexes: -

## Aim of this document

The aim of this document is to present the procedure that the INDUCE Partners can follow to read and write information from/into the Web-Server in a secure way.

## Scheme of the PROCEDURE

The procedure for activating the *secure communication protocol* is shown in the Figure 1. In the scheme, the different operations and their relationships are evidenced.

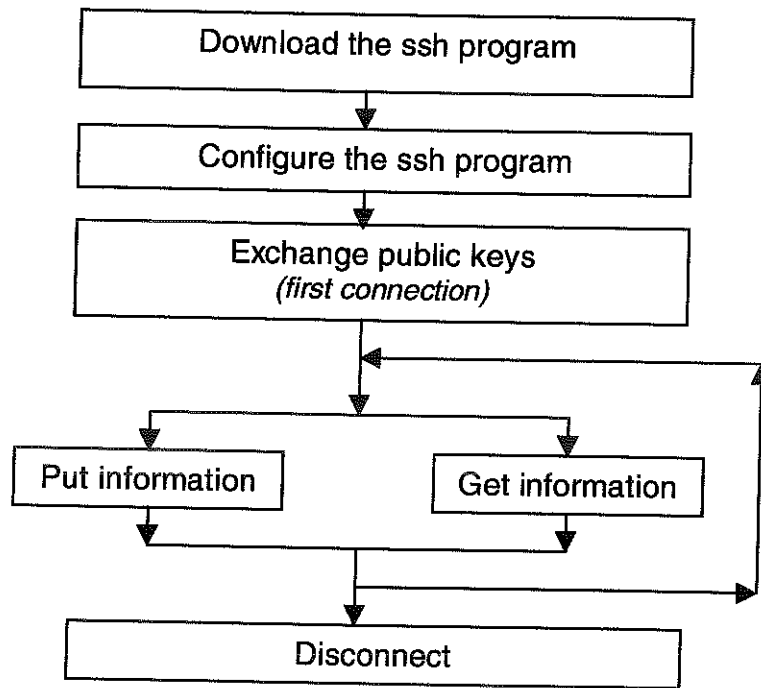


Figure 1 – Overall scheme of the security procedure.



Date: 15.06.2000	Reference N°: <u>TR-2140-IEI-02</u>	Revision: 1	Pages: 4/12
			Annexes: -

## Basic Resources

Reading information from the site does not require any special software.

On the contrary, writing information into the site (i.e, storing documents in the *private environment*) requires *ad hoc* instruments; among the different possibilities, we suggest to use a third-part product called **ssh**.

In the following, the procedure to get the program is detailed.

Firstly, you need to download the ssh program by connecting to the site

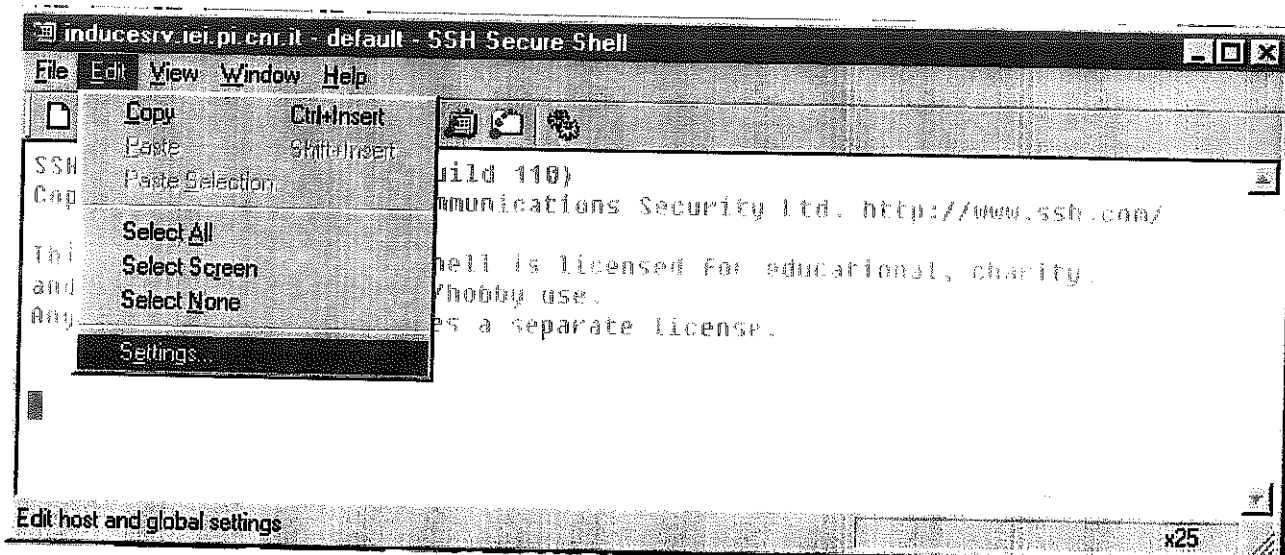
<http://commerce.ssh.com>

taking care to select the *Non-Commercial SSH Secure Shell for Workstations*.

During this operation some information are requested before starting the download.

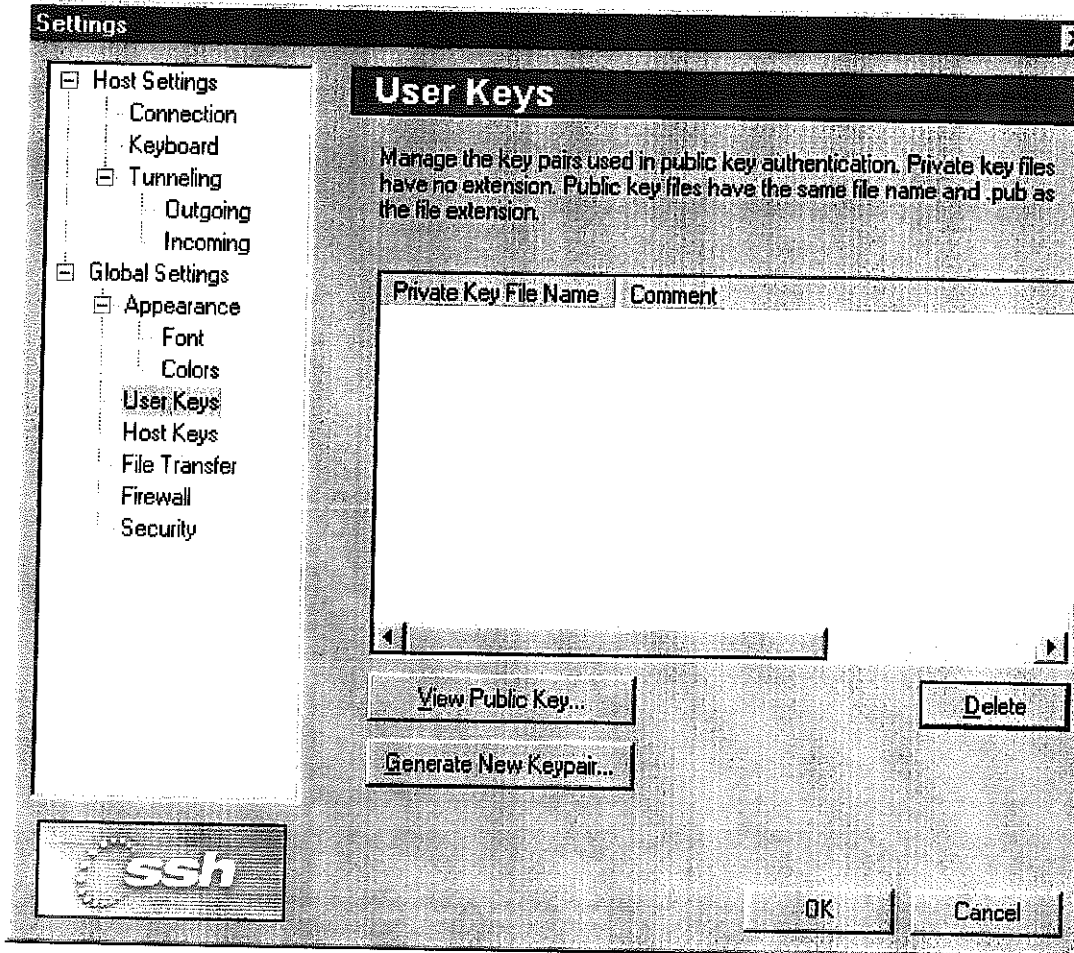
## System Configuration

After the program has been downloaded and installed on your computer, run it and then select the "Setting" choice from the Edit menu. Then select "User Keys".





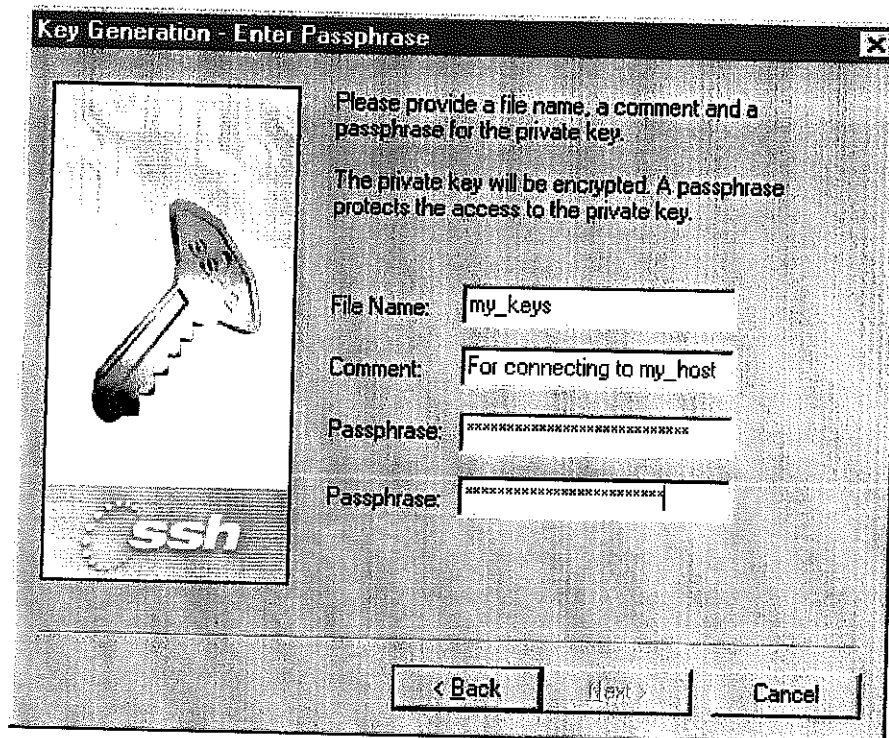
Date: 15.06.2000	Reference N°: <u>TR-2140-IEI-02</u>	Revision: 1	Pages: 5/12
			Annexes: -



Now click the "Generate New KeyPair..." button.



Date: 15.06.2000	Reference N°: <u>TR-2140-IEI-02</u>	Revision: 1	Pages: 6/12
			Annexes: -



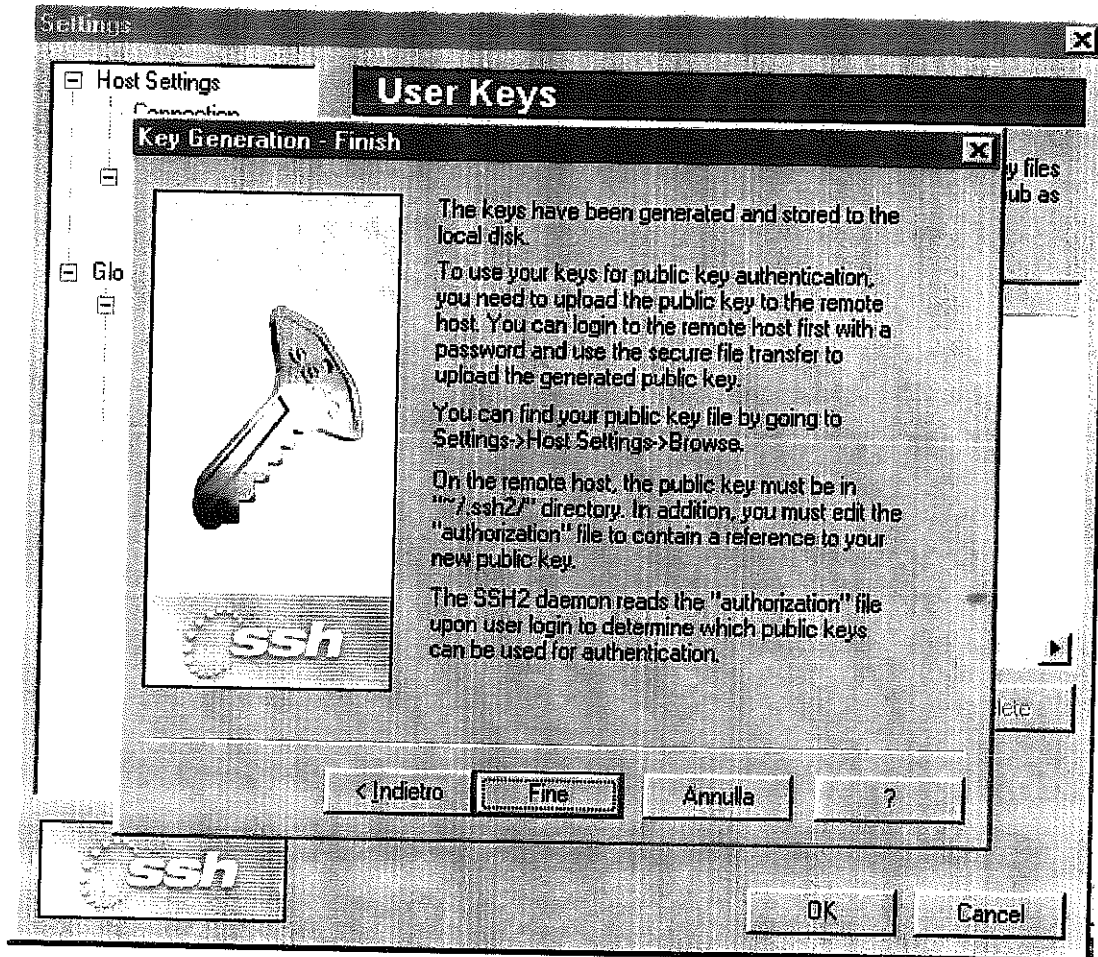
Input a file name where your keys will be stored, e.g. "my\_keys", and eventually write a comment in the proper field.

At this point, you must choose and write your password *-two times-* in *Passphrase*.

Click on the "Next >" button some times.



Date: 15.06.2000	Reference N°: <u>TR-2140-IEI-02</u>	Revision: 1	Pages: 7/12
			Annexes: -



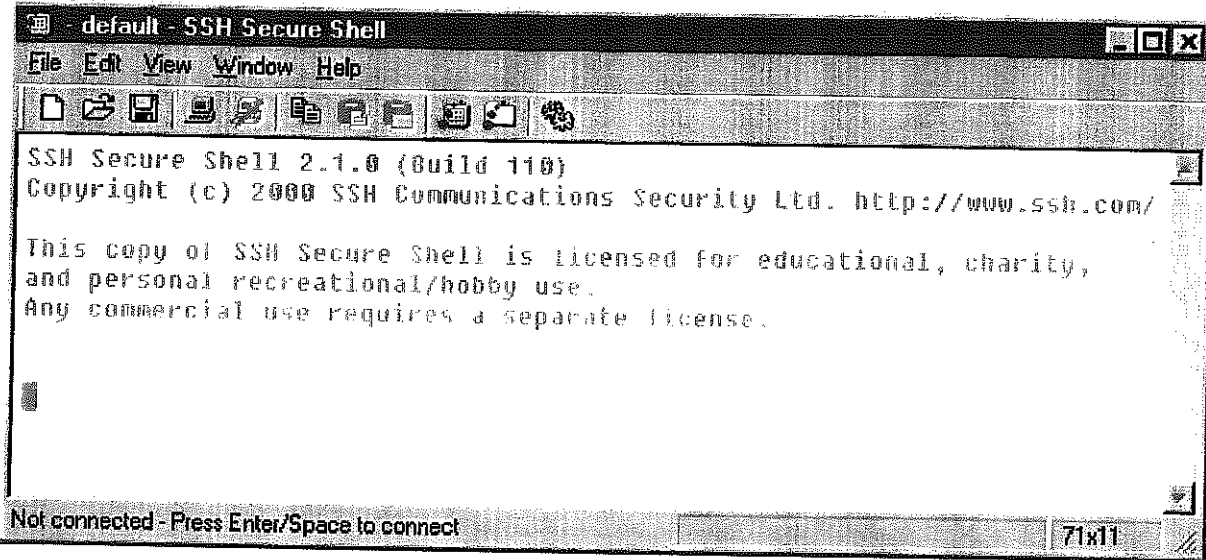
At the end of this procedure you can connect to the INDUCE site.



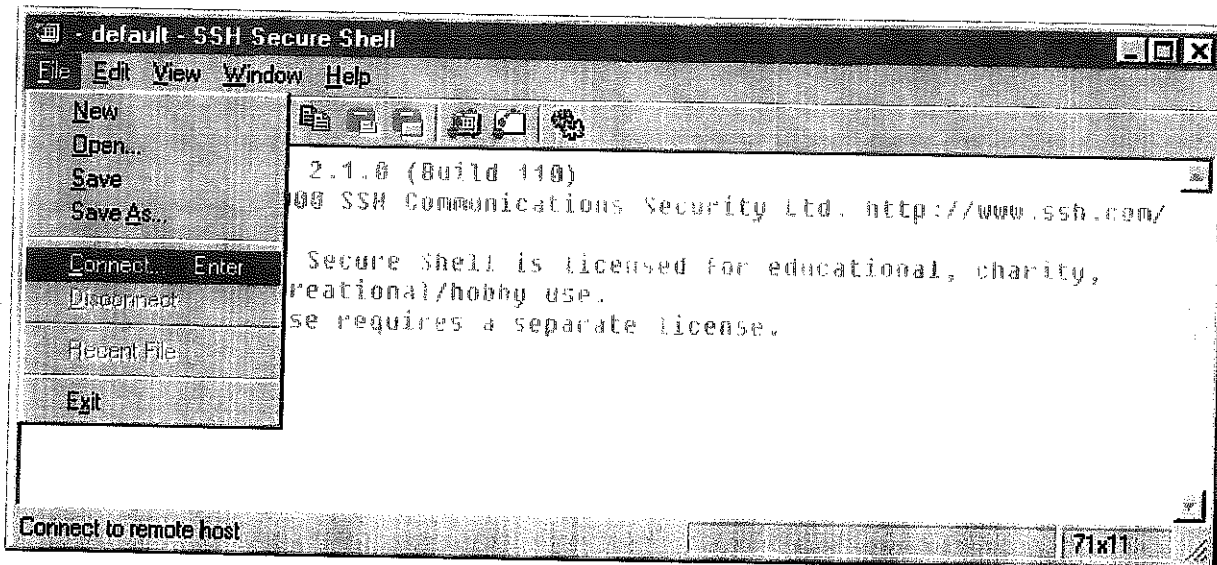


Date: 15.06.2000	Reference N°: <u>TR-2140-IEI-02</u>	Revision: 1	Pages: 8/12
			Annexes: -

## The First Connection



Choose the "Connect" voice from the "File" Menu

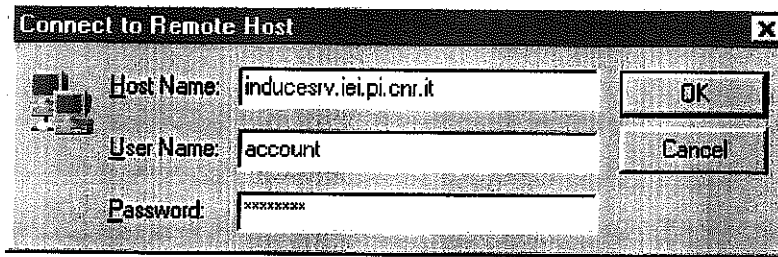


After having received some information, input (see next figure)

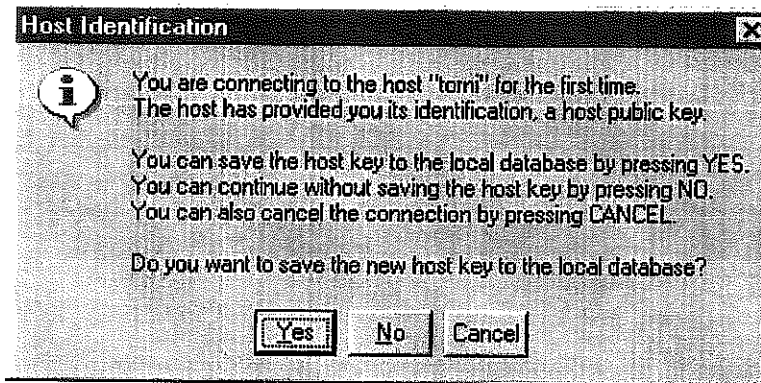
- 1) the name of the computer, that is `inducesrv.iei.pi.cnr.it`, then
- 2) your **account** and
- 3) your **password**.



Date: 15.06.2000	Reference N°: <u>TR-2140-IEI-02</u>	Revision: 1	Pages: 9/12
			Annexes: -

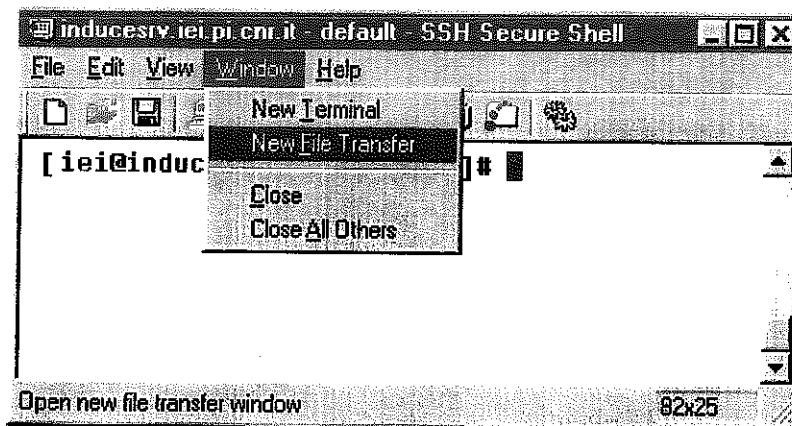


Once connected, it is necessary to exchange your public key with the public key of the host you are connected to: to this way, simply choose *yes* in the window displayed.  
This procedure is requested only the first time the connection to the site is activated.



## Steps for Writing in a Secure Way

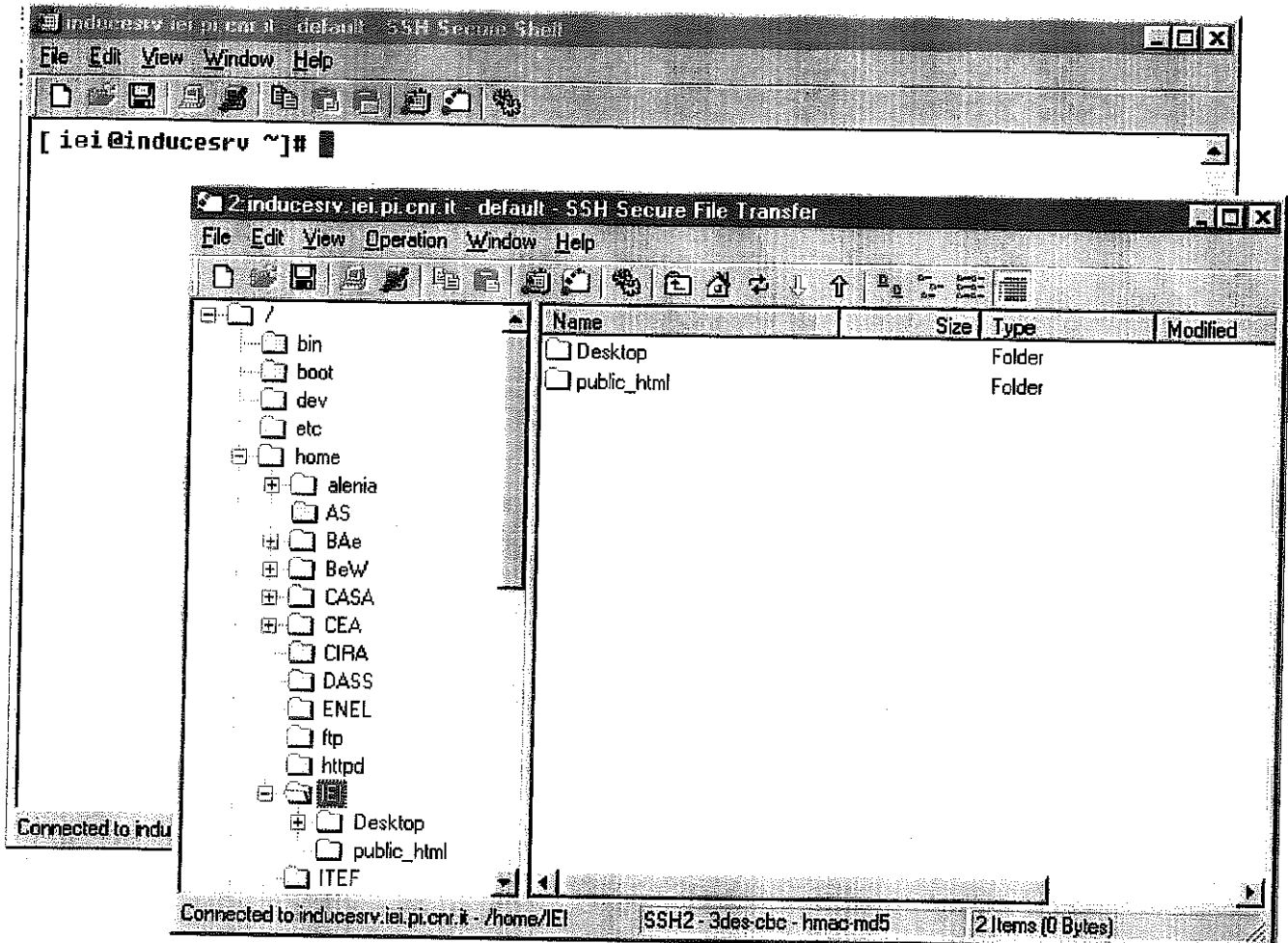
In order to write information onto the site, select "New File Transfer" from the "window" menu.





Date: 15.06.2000	Reference N°: <u>TR-2140-IEI-02</u>	Revision: 1	Pages: 10/12
			Annexes: -

At this point, drag and drop any file from your computer to your folder in the INDUCE site located on the right side of the "SSH Secure File Transfer" window.



In particular, you can drag the file from your computer directory and drop it in the public\_html directory of the server; in this way, you can see the information using your web browser, connecting to your private area.

In the following two figures an example is shown where a file, called 'schema1.gif', is moved from our personal computer to the INDUCE site.



Date: 15.06.2000	Reference N°: <u>TR-2140-IEI-02</u>	Revision: 1	Pages: 11/12
			Annexes: .

The screenshot shows two overlapping windows from an SSH session. The top window is a terminal with the prompt [iei@inducesrv ~]#. The bottom window is an 'SSH Secure File Transfer' window showing a directory listing of /home/iei/public\_html. The listing includes folders like bin, boot, dev, etc, home, and subfolders under home such as alenia, AS, BAe, BeW, CASA, CEA, CIRA, DASS, ENEL, ftp, httpd, IEI, Desktop, public\_html, ITEF, and massimo. Two files, 515.gif and schema1.gif, are selected in the file transfer window. The status bar at the bottom of the file transfer window indicates 'Connected to inducesrv.iei.pi.cnr.it - /home/iei/public\_html' and 'SSH2: 3des-cbc - hmac-md5'.

This screenshot shows a closer view of the 'SSH Secure File Transfer' window. The directory listing on the left is the same as in the previous screenshot. The right pane shows a table with the following data:

Name	Size	Type	Modified
schema1.gif	2,558	Immagine GIF	

The status bar at the bottom indicates 'Connected to inducesrv.iei.pi.cnr.it - /home/iei/public\_html' and 'SSH2: 3des-cbc - hmac-md5' with '1 Items (2.6 KB)'.



Date: 15.06.2000	Reference N°: <u>TR-2140-IEI-02</u>	Revision: 1	Pages: 12/12
			Annexes: -

## Steps for Reading in a secure way

Getting a file from INDUCE site requires to execute the inverse procedure, or to click the file on the "SSH Secure File Transfer" window and then to drag and drop it on the folder on your computer.

## End of Session

At the end of the overall procedure, choose "Disconnect" from the "File" menu in all the windows opened (probably two, *ssh shell* and *file transfer*).

## Sharing information with other INDUCE Partners

Sharing information with other partners needs firstly to inform the INDUCE Web-Administrator, via an email; he will transfer the specified file(s) in the directory named "common", located in the directory ".." (i.e., the parent directory)