

Colour and Colorimetry Multidisciplinary Contributions

Vol. XVII A

Edited by Andrea Siniscalco



www.gruppodelcolore.org

*Regular Member
AIC Association Internationale de la Couleur*

Colour and Colorimetry. Multidisciplinary Contributions. Vol. XVII A

Edited by Andrea Siniscalco

Published by Gruppo del Colore - Associazione Italiana Colore

Research Culture And Science Books series (RCASB), ISSN: 2785-115X

ISBN 978-88-99513-18-4

DOI: 10.23738/RCASB.006

© Copyright 2022 by Gruppo del Colore – Associazione Italiana Colore

Piazza C. Caneva, 4

20154 Milano

C.F. 97619430156

P.IVA: 09003610962

www.gruppodelcolore.it

e-mail: segreteria@gruppodelcolore.org

Translation rights, electronic storage, reproduction
and total or partial adaptation with any means reserved for all countries.

Published in the month of December 2022

**Colour and Colorimetry. Multidisciplinary Contributions
Vol. XVII A**

Proceedings of the 17th Color Conference.

Meeting in collaboration with:

Associação Portuguesa da Cor (PT)

Centre Français de la Couleur (FR)

Colour Group (GB)

Forum Farge (NO)

Suomen väriyhdistys SVY (FI)

Swedish Colour Centre Foundation (SE)

*“Nello Carrara” Institute of Applied Physics of the IFAC-CNR National Research Council
12-13 September 2022*

Chair

Andrea Siniscalco, Politecnico di Milano, IT

Programme Committee

Fabrizio Apollonio, Università di Bologna, IT
Gianluca Guarini, Politecnico di Milano, IT
Marcello Picollo, IFAC-CNR, IT

Organizing Secretariat

Albana Muco, Gruppo del Colore - Associazione Italiana Colore

Scientific Committee - Peer review

- Nuno Alão** | Lisbon School of Architecture, PT
Kine Angelo | Norwegian University of Science and Technology, NO
Fabrizio Apollonio | Università di Bologna, IT
John Barbur | City University London, UK
Laura Bellia | Università di Napoli Federico II, IT
Berit Bergstrom | Swedish Colour Centre Foundation, SE
Janet Best | Natick, GB
Marco Bevilacqua | Università di Pisa, IT
Carlo Bianchini | Sapienza Università di Roma, IT
Cristian Bonanomi | Konica Minolta Sensing Europe B.V., EU
Valérie Bonnardel | University of Winchester, GB
José Luis Caivano | Universidad de Buenos Aires, AR
Patrick Callet | École Centrale Paris, FR
Cristina Maria Caramelo Gomes | Universidade Lusitana de Lisboa, PT
Antonella Casoli | Università di Parma, IT
Céline Caumon | Université Toulouse2, FR
Filippo Cherubini | IFAC-CNR, IT
Vien Cheung | University of Leeds, UK
Emanuela Chiavoni | Sapienza Università di Roma, IT
Verónica Conte | University of Lisbon, PT
Paula Csillag | ESPM University, BR
Oswaldo Da Pos | Università di Padova, IT
Maria João Durão | Universidade de Lisboa, PT
Reiner Eschbach | NTNU, NO
Maria Linda Falcidieno | Università di Genova, IT
Christine Fernandez-Maloigne | University of Poitiers, FR
Davide Gadia | Università di Milano, IT
Margarida Gamito | University of Lisbon, PT
Martinia Glogar | University of Zagreb, HR
Yulia A. Griber | Smolensk State University, RU
Jon Hardeberg | Norwegian University of Science and Technology, NO
Francisco Imai | Apple Inc., US
Maria João Durão | Universidade de Lisboa, PT
Agata Kwiatkowska-Lubańska | Academy of Fine Arts, Kraków, PL
Mette L'Orange | University of Bergen, NO
Guy Lecerf | Université Toulouse2, FR
Simone Liberini | Freelance professional, IT
Carla Lobo | LIDA, School of Arts and Design, Polytechnic of Leiria
Maria Dulce Loução | Universidade Tecnica de Lisboa, PT
Veronica Marchiafava | Associazione Italiana Colore, IT
Anna Marotta | Politecnico di Torino IT
Luisa M. Martinez | UNIDCOM-IADE, Universidade Europeia, Lisboa, Portugal
Manuel Melgosa | Universidad de Granada, ES
Mario S. Ming Kong | CHAM – FCSH, Universidade NOVA de Lisboa | FAUL, Lisbon School of Architecture, Lisbon, PT
Lia Maria Papa | Università di Napoli Federico II, IT
Laurence Pauliac | Historienne de l'Art et de l'Architecture, Paris, FR
Giulia Pellegrini | Università di Genova, IT
João Pernão | Universidade de Lisboa, PT
Alice Plutino | Università degli Studi di Milano, IT
Marcello Picollo | IFAC-CNR, IT
Fernanda Prestileo | CNR-ISAC-Sezione di Roma, IT
Barbara Radaelli-Muuronen | Helsinki Art Museum, FI
Alessandro Rizzi | Università di Milano, IT
Maurizio Rossi | Politecnico di Milano, IT
Michele Russo | Sapienza Università di Roma, IT
Joana Perry Saes | CIAUD-Faculdade de Arquitectura de Lisboa, Universidade de Lisboa, PT
Paolo Salonia | ITABC-CNR, IT
Miguel Sanches | Instituto Politécnico de Tomar, PT
Gabriele Simone | Renesas Electronics Europe GmbH, DE
Andrea Siniscalco | Politecnico di Milano, IT
Gennaro Spada | Università di Napoli Federico II, IT
Roberta Spallone | Politecnico di Torino, IT
Ferenc Szabó | LightingLab Laboratory, HU
Elza Tantcheva | Colour Group, GB
Justyna Tarajko-Kowalska | Cracow University of Technology, PL
Mari Uusküla | Tallinn University, EE
Francesca Valan | Studio Valan, IT
Eva Maria Valero Benito | University of Granada, ES
Ralf Weber | Technische Universität Dresden, DE

Organizers



Sponsor



KONICA MINOLTA

With the patronage of

AIAr - Associazione Italiana di Archeometria

AIDI - Associazione Italiana di Illuminazione

IGIIC - Gruppo Italiano International Institute for Conservation

AIC - International Colour Association

SID - Italian Design Society

SIOF - Italian Society for Optics and Photonics

Effects of tinted lenses on chromatic sensitivity: changes in colour vision assessed with the CAD test, a preliminary study

Lucia Natali¹, Alessandro Farini^{1,2,3}, Elisabetta Baldanzi^{2,3}, John Barbur⁴

¹IRSOO Istituto Ricerca e Studi in Ottica e Optometria, Vinci, Italy

²Istituto nazionale di Ottica-CNR, Largo Fermi 6, 50125 Firenze, Italy

³Università di Firenze, corso di laurea in Ottica e Optometria, Firenze, Italy

⁴Centre for Applied Vision Research, School of Health Sciences, City, University of London, London, UK

Contact: Alessandro Farini, Alessandro.farini@ino.cnr.it

Abstract

The aim of this study was to assess the extreme effects of tinted lenses on colour vision by examining changes in chromatic sensitivity when viewing visual displays through a slightly tinted ('blue-blocking') filter and through a heavily tinted, 'orange' coloured filter. The CAD test was used to measure both red / green (RG) and yellow / blue (YB) chromatic sensitivity in ten subjects when viewing visual displays through each of the two filters. The measured RG and YB colour thresholds were then compared with similar measurements made without coloured filters in front of the eye. The blue-blocking filter absorbs only a small amount of short-wavelength light whilst the 'orange' filter attenuates preferentially more short wavelength and some middle-wavelength light. The results show that the blue-blocking filter does not affect significantly either RG or YB colour vision. The orange filter, on the other hand, causes large changes in colour discrimination. The results were analysed statistically by comparing results obtained with the coloured filters with those measured without any filters in front of the eye. More experimental work is now needed to establish how much short wavelength light can be removed without affecting significantly the subject's colour discrimination performance.

Keywords: anomalies of colour vision, filtering lenses.

Introduction

Colour vision is important since colour signals can be used to code information that improves our visual performance. The ability to discriminate different colours has many advantages in daily and professional life. Furthermore, it is mandatory to confirm compliance with safety standards in visually-demanding working environments where good colour perception is required (aviation, maritime transport, fire and rescue services, etc) (Barbur and Rodriguez-Carmona 2017).

People use lenses during their daily activities, because they need a correction for their refractive conditions or because they want to reduce the amount of light reaching the retina and also to minimise glare. Since the use of various types of ophthalmic lenses that are often spectrally selective is widespread, it is of interest to understand how the use of such lenses can affect colour vision. In particular, we would like to predict accurately how the subject's colour discrimination abilities are affected by the use of coloured lenses and to understand the possible repercussions the use of coloured lenses may have in normal daily life and in working environments. The immediate objective of this work is to evaluate how colour discrimination on visual displays varies when using coloured lenses in front of the eye. We report preliminary results which measure red/green (RG) and yellow/blue (YB) colour thresholds when viewing visual displays through coloured filters.

Tinted lens characteristics

Tinted lenses nowadays could be realised using two different methods. The traditional method uses the absorption properties of pigments, but in recent years it is common to use bespoke interference filters with selective absorption bands. Filters based on thin, multi-layer coatings can be designed to control accurately the amount of short-wavelength light absorbed by the lens. These two methods of

producing coloured filters affect both the amount and the spectral composition of the transmitted light. Recently blue blocking lenses based on thin-layer coatings have been produced and made available commercially by lens manufacturers, claiming good protection from blue light (Comparetto and Farini, 2019). In our experiment we use two different lenses, one that relies on light absorption by spectrally-selective pigments, the other one a blue blocker lens produced multilayer thin film interference (Fig.1). Transmittance measurements were made using a Perkin Elmer 1050 spectrophotometer.

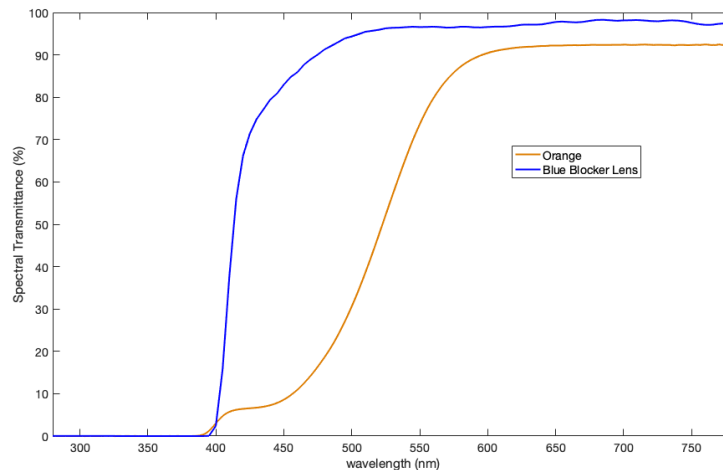


Fig. 1 – Spectral transmittance of the two lenses used in the experiment. The blue line is the blue blocker lens (Essilor Crizal Styliis, $n=1.67$), the orange line is an orange lens.

Subjects

Ten subjects (six men and four women), who ranged in age from 19 to 26 (mean age= 22.1 ± 2.4), participating in the study. We prefer to limit the age interval for our subjects because we want to study only the effect of tinted lenses, avoiding well-known effects on colour vision related to age (Barbur and Rodriguez-Carmona 2016). The subjects had binocular visual acuity better than one minute of arc (i.e. equivalent to 20/20 on the Snellen chart) and needed no refractive corrections to see clearly the test stimuli on the visual display.

Colour test

We use the Colour Assessment and Diagnosis (CAD) test in our experiment. The CAD test isolates the use of coloured signals and measures colour detection thresholds. Studies on camouflage showed that the use of dynamic luminance contrast noise masks the detection of luminance contrast signals without affecting significantly either RG or YB chromatic sensitivity (Barbur 2004). The test involves the use of a calibrated monitor, keyboard and a computer on which CAD software is installed. The test generates coloured stimuli on a visual display within a background of dynamic luminance contrast noise. The stimuli move along each diagonal direction, and the colours are selected to ensure automatic classification of the class of deficiency involved, as well as adequate estimates of both RG and YB colour thresholds (Fig.2A).

The subject's task is to indicate the direction of movement of the colour-defined stimulus using one of the four, raised, corner buttons on the numeric keypad. The test requires the subject's age which is an important parameter since the results are compared against the expected normal age limits. When the full test is carried out the results show the subject's RG and YB thresholds in CAD units. A graph is also displayed to indicate the measured RG and YB thresholds superimposed on the normal, age-matched chromatic threshold ellipse. The latter is plotted in the CIE (x,y) -1931 chromaticity diagram, together with the expected upper and lower threshold limits for the subject's age (Fig.2B).

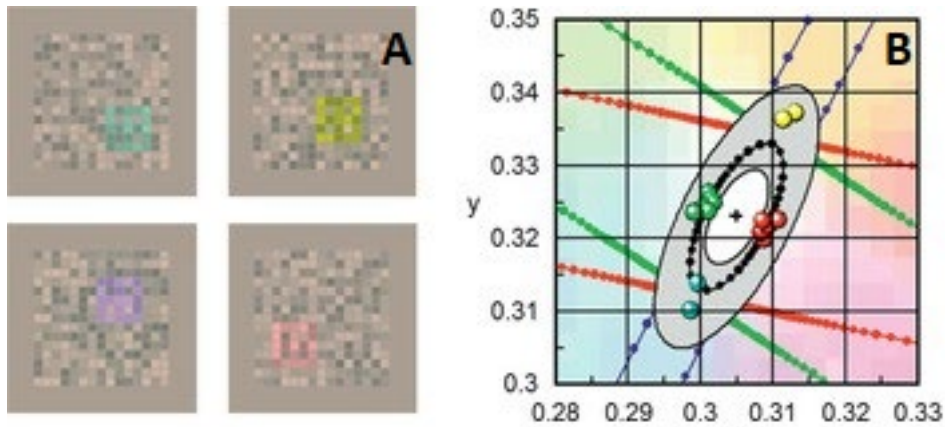


Fig. 2 – A) RG and YB stimuli employed in the CAD test. B) The statistical limits for the standard normal (SN) CAD observer are plotted in the CIE (x,y) 1931 chromaticity chart.

Results

The thresholds for the RG (Fig.3) and the YB (Fig.4) channels show that the orange lens causes a large loss of colour vision, while the blue blocker lens does not affect significantly either RG or YB colour thresholds.

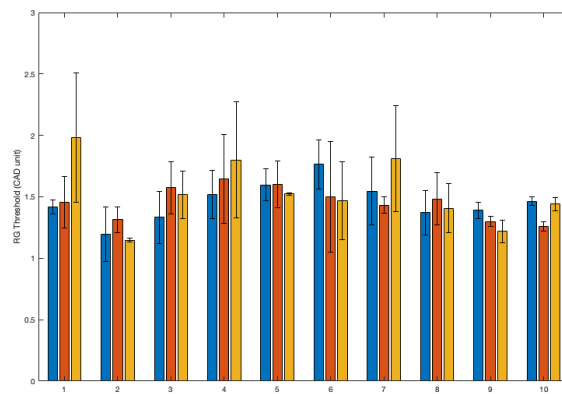


Fig. 3 – mean RG thresholds measured in the ten study participants for each of the three viewing conditions: direct viewing without any lens in front of the eye (blue bars), with the blue-blocker lens (red bars) and with the orange lens (orange bars). The vertical lines indicate the computed inter-subject variability ($\pm\sigma$)

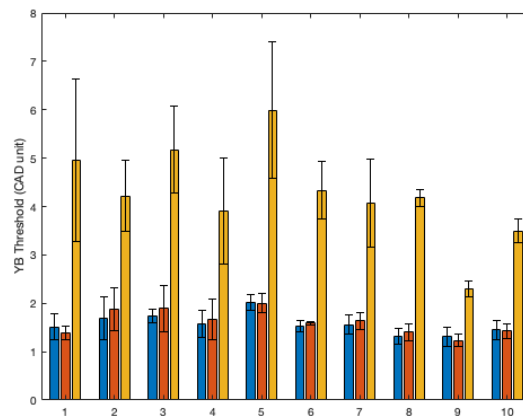


Fig. 4 – mean YB thresholds measured in the ten study participants for each of the three viewing conditions: direct viewing without any lens in front of the eye (blue bars), with the blue-blocker lens (red bars) and with the orange lens (orange bars). The vertical lines indicate the computed inter-subject variability ($\pm\sigma$)

In addition, we carried out a one-way ANOVA to compare the effect of type of lens on RG and YB threshold. This test revealed that there was a statistically significant difference in YB threshold between at least two groups ($F(2,27)=[65.24]$, $p<10^{-5}$). Tukey’s HSD test for multiple comparisons revealed significant differences in YB thresholds when comparing the no lens and orange lens conditions ($p<10^{-5}$, 95% C.I.=[-2.6967,-2.0265]) and the blue-blocker lens and the orange lens ($p<10^{-5}$, 95% C.I.=[-2.6503,-1.9802]). The box plot for YB threshold is shown in Fig.5. There was no statistically significant difference between no lens and blue-blocker lens conditions ($p=0.98$). Regarding RG threshold, the one-way ANOVA revealed no statistically significant differences between the three conditions.

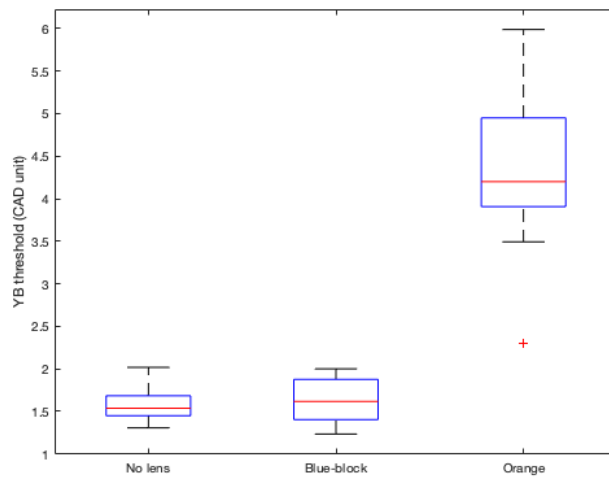


Fig. 5 –Box plot for YB threshold. The red line represents the median, the whiskers are the maximum and minimum value, the boxes are the 25 and 75 percentiles: the plot shows the large difference between the orange lens and the other two conditions.

Comparison of results plotted in fig.6 and fig.7 confirms that the orange lens strongly affects colour discrimination, whilst the effect of the blue-blocker lens is negligible.

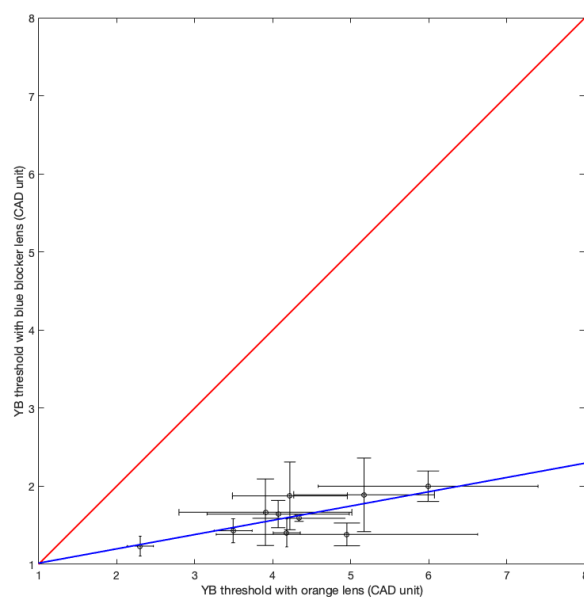


Fig. 6 –Relationship between YB threshold with orange lens (x axis) and with blue blocker lens (y axis). The error bars are the standard deviations. The blue line is the regression line ($y=0.18x+0.83$), the red line is the $y=x$ line. Pearson’s $r = 0.72$.

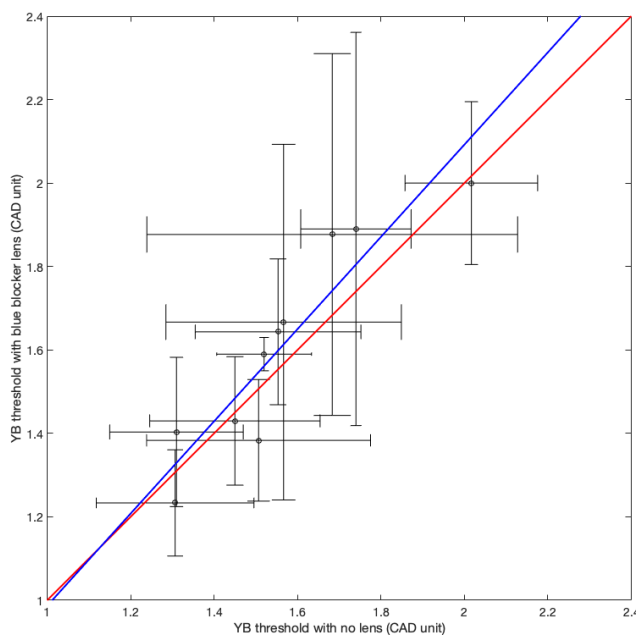


Fig. 7 –Relationship between YB threshold with no lens (x axis) and with blue blocker lens (y axis). The error bars are the standard deviations. The blue line is the regression line ($y=1.10x-0.11$), the red line is the $y=x$ line. Pearson's $r=0.92$.

Conclusions

The findings reported here show that although commercial blue-blocking lenses have a negligible effect on colour discrimination on visual displays, coloured lenses that absorb a greater amount of short wavelength light can cause large loss of chromatic sensitivity with the YB channel being most affected. This preliminary study demonstrates that the CAD test could be used to assess objectively the maximum amount of short-wavelength light one can absorb with blue-blocking spectacle lenses without affecting significantly either RG or YB chromatic sensitivity.

References

- Barbur J. L. (2004). 'Double-blindsight' revealed through the processing of colour and luminance contrast defined motion signals. *Progress in brain research*, 144, 243–259.
[https://doi.org/10.1016/S0079-6123\(03\)14417-2](https://doi.org/10.1016/S0079-6123(03)14417-2)
- Barbur, J. L. and Rodriguez-Carmona, M. (2016). Colour vision changes in normal aging. In: Elliott, A. J., Fairchild, M. D. and Franklin, A. (Eds.), *Handbook of Colour Psychology*. (pp. 180-196). Cambridge: Cambridge University Press. ISBN 9781107043237
- Barbur, J. L., & Rodriguez-Carmona, M. (2017). Colour vision requirements in visually demanding occupations. *British medical bulletin*, 122(1), 51-77.
- Comparetto, R., & Farini, A. (2019). Mitigating retinal damage and circadian rhythm modification by blue-blocking spectacles lenses: evaluation parameters. *The European Physical Journal Plus*, 134(10), 1-8. <https://doi.org/10.1140/epjp/i2019-12848-x>