



ICOMOS

international council on monuments and sites

ICOMOS
General Assembly
18

Symposium

Firenze, Italia

9/14 novembre 2014

Edited by

Maurizio Di Stefano

***Heritage and Landscape
as Human Values***

Conference Proceedings

Poster

Volume 2 - Themes 3,4,5

***Patrimoine et Paysages
en tant que Valeurs
Humaines***

Actes de la conference

Poster

Volume 1

Heritage and Landscape as Human Values
Conference Proceedings - Posters

Paysage et Patrimoine en tant que Valeurs Humaines
Actes de la Conférence - Poster



Dedicated to Khaled al Asaad, Syrian archaeologist, "example of a hero of our times", brutally murdered by ISIS in the extreme attempt to defend Palmyra from the iconoclastic fury.

Dédié à Khaled al Asaad, archéologue syrienne, "exemple d'un héros de notre temps»,brutalement assassinés par ISIS dans la tentative extreme pour défendre Palmyra de la furie iconoclaste.

The real chance to guarantee the future of mankind is based, among other things, on the ability of modern society to ensure a “future for the past”, whose subsistence suggests that of a heritage totality, belonging to citizens of all the world: the totality of cultural heritage, of which architectural monuments and environment of ancient centers are an essential part.

La reale possibilità di assicurare l'avvenire del genere umano si basa, tra l'altro, sulla capacità della moderna società di garantire un “futuro per il passato”, la sussistenza del quale implica quella di un enorme patrimonio, appartenente agli uomini civili di tutto il mondo: quello dei beni culturali, di cui i monumenti di architettura e gli ambienti dei centri antichi sono parte essenziale.

18 I C O M O S General Assembly

Symposium
Heritage and Landscape
as Human Values
Firenze, Italia
9/14 novembre 2014

CONFERENCE PROCEEDINGS POSTERS Volume 2 - Themes 3,4,5

Edited by
Maurizio Di Stefano

Heritage and Landscape as Human Values

Conference Proceedings - Posters
Volume 1 - Themes 3,4,5

Edited by
Maurizio Di Stefano

ICOMOS
International Council on Monuments
and Sites
11 rue du Séminaire de Conflans
94 220 Charenton-le-Pont, France
Tel. + 33 (0) 1 41 94 17 59
<http://www.icomos.org>

ICOMOS

international council on monuments and sites

Executive Committee 2014 - 2017

President: Gustavo Araoz (USA)
Secretary General: Kirsti Kovanen (Finland)
Treasurer General: Laura Robinson
(South Africa)
Vice Presidents:
Alfredo Conti (Argentina)
Toshiyuki Kono (Japan)
Gideon Koren (Israel)
Peter Phillips (Australia)
Grellan Rourke (Ireland)

Members of the Board:

Nils Ahlberg (Sweden)
Sofia Avgerinou-Kolonias (Greece)
Stefan Belishki (Bulgaria)
Amel Chabbi (United Arab Emirates)
Victor Fernandez Salinas (Spain)
Pierre-Antoine Gatier (France)
Pamela Jerome (USA)
Rohit Jigyasu (India)
Lu Qiong (China)
Christoph Machat (Germany)
Olga Orive (Mexico)
Mario Santana Quintero
Invited expert to the Board:
Alpha Diop (Mali)
President of the Advisory Committee:
John Hurd (United Kingdom)
Coordinator of the Scientific Council:
James Reap (USA)
Honorary Presidents:
Michael Petzet (Germany)
Roland Silva (Sri Lanka)

Executive Committee 2011 - 2014

President: Gustavo Araoz (USA)
Secretary General: Kirsti Kovanen (Finland)
Treasurer General: Laura Robinson
(South Africa)
Vice Presidents:
Kristal Buckley (Australia)
Alfredo Conti (Argentina)
Gideon Koren (Israel)
Benjamin Mouton (France)
Guo Zhan (China)

Members of the Board:

Sofia Avgerinou-Kolonias (Greece)
Stefan Belishki (Bulgaria)
Dinu Bumbaru (Canada)
Francesco Caruso (Italy)
Rohit Jigyasu (India)
Toshiyuki Kono (Japan)
Philippe la Hausse de Lalouvière (Mauritius)
Wilfried Lipp (Austria)
Christoph Machat (Germany)
Olga Orive (Mexico)
Hae-Un Rii (Republic of Korea)
Grellan Rourke (Ireland)
President of the Advisory Committee:
John Hurd (United Kingdom)
Coordinator of the Scientific Council:
Pamela Jerome (U.S.A.)

1965-2015



*On the occasion of the 50th Anniversary of
the founding of ICOMOS
International Council
of Monuments and Sites
1965-2015*



International Council on Monuments and Sites
Comitato Nazionale Italiano

ICOMOS Italy

Executive Committee 2013-2016

Honorary President: Salvatore Settis
President: Maurizio Di Stefano
Vice President: Francesco Caruso
(Up to February 2015)
Deputy Vice President: Pietro Laureano
(Starting from June 2015)

Members of the Board:

Amerigo Restucci
Antonia Pasqua Recchia
Giovanni Puglisi
Luigi Petti
Carmen De Luca
Simonetta Valtieri

Board Counsellors:

Francesco Calabrò
Paolo Carillo
Carlo Francini
Luigi Fusco Girard
Rosa Anna Genovese
Pietro Laureano
Cettina Lenza
Chantal Lora
Emma Mandelli
(Up to September 2015)
Paolo Salonia
Franco Bocchieri
(Starting from March 2015)

Scientific Symposium

"Heritage and Landscape as Human Values"
18th ICOMOS General Assembly,
Florence – November 2014

Edited by:

President of ICOMOS Italy
Maurizio Di Stefano
Scientific Symposium President
Salvatore Settis
Scientific Symposium Co-chairs
Maurizio Di Stefano, Monica Luengo

The Honorary Committee

Under the high Patronage of:
Giorgio Napolitano, President of the Italian Republic, and
Irina Bokova, Director General of UNESCO

Honorary Presidents

Matteo Renzi, President of the Council of the Italian Republic
Dario Franceschini, Minister of Cultural Heritage and Activities
and Tourism
Paolo Gentiloni, Minister of Foreign Affairs and International
Cooperation
Louis Godart, Advisor to the President of the Italian Republic for
Conservation of Artistic Heritage

Honorary Committee

Dario Nardella, Mayor of Florence
Enrico Rossi, President of the Region of Tuscany
Andrea Barducci, President of the Province of Florence
Sara Nocentini, Assessor for Culture, Region of Tuscany
Vincenza Lomonaco, Italian Ambassador to UNESCO
Giovanni Puglisi, President of the Italian National Commission for
UNESCO
Antonia Pasqua Recchia, General Secretary of the Ministry for
Cultural Heritage and Activities and Tourism
Michele Valensise, Secretary General of the Ministry of Foreign
Affairs
Alfredo Pérez de Armiñán, Assistant Director-General for Culture
of UNESCO
Claudia Luciani, Director of Democratic Governance at the
Council of Europe
Diana Bracco, President of the Management Company Expo 2015

International Committee

Francesco Bandarin (Italy)
Kristal Buckley (EXCOM)
Pasquale Catanoso (Italy)
Amel Chabbi (UAE)
Lassana Cisse (Mali)
Alberto Tesi (Italy)
Marco Bellandi (Italy)
Stefano De Caro (Italy)
Dominique Fort-Schneider (France)
Pamela Jerome (USA/Scientific Council)
Toshiyuki Kono (Japan)
Luigi Nicolais (Italy)
Jose de Nordenflycht (Chile)
Giovanni Puglisi (Italy)
Julian Smith (Canada)
Rosa Anna Genovese (Italy)



Stato L'Alto Patronato
del Presidente
della Repubblica Italiana



The Scientific Committee

Theme 1

Co-chairs: Emma Mandelli, Sue Millar (Neil Silberman)
Working group: Neil Silberman, Webber Ndoro, Eva Roels,
Pierluigi Sacco, Wang Xudong
Rapporteurs: Stephen Shaw, Silvia Scaramuzzi

Theme 2

Co-chairs: Yukio Nishimura, Mauro Agnoletti (Amerigo Restucci)
Working group: Mauro Agnoletti, Susan Denyer, Elena Dimitrova,
Naralia Dushkina, Ron van Oers, Angela Rojas, Daniel Young
Rapporteurs: Víctor Fernández Salinas, Wimonrart Issarathumnoon

Theme 3

Co-chairs: Peter Cox , Pietro Laureano
Working group: Marco Fioravanti, Baba Keita, Hisham Mortada,
Christophe Sand, Susan McIntyre Tamwoy, Ona Vileikis, Ana
Almagro-Vidal
Rapporteurs: Lisa Davis

Theme 4

Co-chairs: Luigi Fusco Girard, Tara Sharma
Working group: Carolina Castellanos, Harriet Deacon, Angela
Labrador, Saverio Mecca, Sohyun Parck, Celia Toppin, Michael
Turner
Rapporteurs: Nupur Prothi Khanna, Sohyun Park

Theme 5

Co-chairs: Sheridan Burke, Paolo Salonia
Working group: Mina Elmgari, Ayako Fukushima, Cristina
Iamandi, Trinidad Rico, Mario Santana, Claudia Ventura
Rapporteurs: Salvatore Siano, Grazia Tucci

The Reading Committee

Amel Chabbi, Ana Almagro-Vidal, Angela Labrador, Angela
Rojas, Ayako Fukushima, Baba Keita, Carolina Castellanos, Celia
Toppin, Christophe Sand, Cristina Iamandi, Daniel Young, Daniele
Campolo, Dominique Fort-Schneider, Elena Dimitrova, Eva Roels,
Giuseppina Cassalia, Harriet Deacon, Hisham Mortada, Jose de
Nordenaycht, Julian Smith, Kristal Buckley, Lassana Cissé, Marco
Fioravanti, Mario Santana, Maurizio Di Stefano, Mauro Agnoletti,
Micheal Turner, Mina Elmgari, Monica Luengo, Natalia Dushkina,
Ona Vileikis, Pamela Jerome, Pierluigi Sacco, Ron van Oers, Rosa
Anna Genovese, Saverio Mecca, Sheridan Burke, Smriti Pant,
Sohyun Park, Sue Millar, Susan Denyer, Susan McIntyre Tamwoy,
Toshiyuki Kono, Trinidad Rico, Wang Xudong, Webber Ndoro

Scientific Symposium Secretariat

Luigi Petti, Claudia Ventura, Carmen De Luca

ICOMOS Italy Secretariat

Paolo Carillo, Carmen De Luca

Revisers

Emma Mandelli, Sue Millar, Ou Yapeng

Graphic Designer

Ilaria Grimaldi

Scientific Partners



ICOMOS - International Organising Committee

Director of ICOMOS: Gaia Jungeblodt
Secretariat: Bernadette Bertel-Rault
Head of Documentation Centre: Lucile Smirnov

ICOMOS Italy - Organising Committee

Maurizio Di Stefano, Francesco Caruso, Carmen De Luca, Rosa Anna Genovese, Luigi Petti, Emma Mandelli, Paolo Salonia, Paolo Carillo, Claudia Ventura, Roberto Di Stefano, Elda Colonna di Stigliano, and Daniele Campolo, Lorenza Capozzi, Giuseppina Cassalia, Michela Cassese, Gennaro Cervone, Rossella Culotta, Elisabetta Esposito, Ilaria Grimaldi, Daniela Leone, Lorenzo Marino Cerrato, Nicola Mercurio, Ou Yapeng, Antonella Pavia, Massimo Sbriglia

Special thanks to

Ministry of Foreign Affairs and International Cooperation:
Tancredi Francese, Massimo Riccardo, Manuela Ruosi, Michele Valensise

Ministry of Cultural Heritage and Activities and Tourism:
Silvia Alessandri, Cristini Acidini, Gianni Bonazzi, Isabella Lapi, Antonia Pasqua Recchia, Simona Pasquinucci, Uberto Vanni d'Archirafi

University of Florence:
Marco Bellandi

Region of Tuscany:
Enrica Buccioni, Massimo Gregorini, Gian Bruno Ravenni

Province of Florence:
Fabrizio Boni, Laura Monticini

Municipality of Florence:
Manuel Braghero, Antonella Chiri, Lucia De Siervo, Carlo Francini

Fondazione Romualdo Del Bianco*:
Paolo Del Bianco, Carlotta Del Bianco, Caterina Del Bianco, Corinna Del Bianco, Simone Giometti, Michaela Zackova Rossi
FICLU – Federazione Italiana Club e Centri UNESCO:
Marialuisa Stringa, Anna Teresa Rondinella, Maria Paola Azzario

Thanks to our volunteers, who spent their time helping ICOMOS, and all the participants, we could not have successfully held this event without their dedication, and to all not mentioned here for their cooperation.

Privileged Partners



Supporters



Table of Contents:

The Florence Declaration on Heritage and Landscape as Human Value	18
Theme3	25
Sustainability through traditional knowledge	
3-1 Quality of daily life produced by traditional knowlwdge	27
Heritage and Lanscape as Human Values: Domestic Unit and Everyday Life in a Mayan Community of Yucatan Today	27
<i>Lucia TELLO</i>	
Restoration of Defensive Watergate Bridge Using Traditional Technology in Korea	32
<i>HONG Namhee-Kim, KOH Hyun-Moo, HONG Sung-Gul</i>	
3-2 Value of traditional knowledge and practices as the basis for balanced technological, innovative development programmes and sustainable development	39
Traditional Craftsmanship and Community-based Preservation of Wooden Churches in Ukraine	39
<i>Anna BOGDANOVA, Yasufumi UEKITA</i>	
Conservation and Rehabilitation Plan for the Earthen Kasbah of Taourirt in Southern Morocco	46
<i>Mohamed BOUSSALH, Claudia CANCINO, Benjamin MARCUS, Lori WONG, Françoise DESCAMPS</i>	
Agrarian Heritage as a Living Heritage: Principles for Its Recognition and Promotion in the Charter of Baeza on Agrarian Heritage	53
<i>Celia MARTÍNEZ</i>	
Pierre sèche, la tradition au service des terroirs durables	59
<i>Claire CORNU, Michelangelo DRAGONE</i>	
Energy Performance of Architectural Heritage: Characteristics of the Historic Buildings in Palermo	63
<i>Enrico GENOVA, Giovanni FATTA</i>	
Entre savoir faire et faire savoir : la restauration de l'Albergo dei Poveri di Napoli	71
<i>Francesca BRANCACCIO, Didier REPELLIN, Giorgio CROCI</i>	
Analysis of Traditional Workmanship as Restricted Cultural Production	80
<i>Giedrė JARULAITIENĖ, Eir Ragna GRÝTLI</i>	
Saving the Tinawon (Ifugao Rice): Centrality of Rice in Ifugao Society	87
<i>John A. PETERSON, Stephen B. ACABADO, Marlon MARTIN</i>	
The Traditional Sacred Wooden Construction in Lithuania between XVIII and XIX Century	95
<i>Liucija BEREŽANSKYTĖ, Tiziana CAMPISI</i>	
Les valeurs pluriverselles exceptionnelles (VPE) or outstanding pluriversal values	102
<i>Marion WOYNAR</i>	
Knowledge as a Tool for the Rehabilitation of Theatres	105
<i>Patrizia LO SARDO, Giovanni FATTA</i>	
Jericho: Sustainable Development through the Rehabilitation of Traditional Mud Brick Architecture	111
<i>Roberto SABELLI, Italo CELIENTO</i>	
Water Management in the Construction of Landscape: Tradition as a Learning Model	119
<i>Rosa CHANDIA-JAURE</i>	

The Knowledge of Traditional Constructive Systems and Its Contribution to a Sustainable Practice in Architecture: the Example of the Bourgeois House of Porto	126
<i>Rui Fernandes PÓVOAS, Joaquim TEIXEIRA</i>	
3-3 Respect for sites and decision processes that safeguard communities and people	132
Adaptive Reuse as a Strategy through Sustainability of Traditional Knowledge: Approaches in Milan	132
<i>Damla MİSİRLİSOY, Kağan GÜNÇE</i>	
Bolero: Cultural Link to the Americas and the World	139
<i>Graciela MOTA BOTELLO, Cecilia TAPIA MARGAONA, Rodrigo DE LA CADENA</i>	
Our Intangible Cultural Heritage of Arirang in Two Bordering Koreas	146
<i>Hee Sook LEE-NINIOJA</i>	
Seeking Models for the Rehabilitation of Collectively Inhabited Buildings	152
<i>Oriel PRIZEMAN</i>	
Objects of UNESCO in Ukraine as a Factor of the Society Humanization	159
<i>Tamara MARUSYK, Iryna KOROTUN</i>	
3-4 Reacting in an adaptive and participatory way to risk and catastrophes	165
Safety in the Conservation Workplace	165
<i>Gennaro TAMPONE</i>	
Traditional Knowledge of Heritage to Promote Resilience to Disaster in Hilly Regions of India	170
<i>Nayana R. SINGH, Ajay KHARE , Gaurav SINGH</i>	
Theme 4	177
Community-driven conservation and local empowerment	
4-1 Community Engagement in the valorization of heritage	179
Value education for culture, peace and human development	179
<i>Alesia KOUSH</i>	
The Path Is the Goal: the Story of the Re-vitalization of an Ancient Temple Access in Ladakh	186
<i>Alexandra SKEDZUHN-SAFIR*, Martina OETER</i>	
Empowering Community Heritage Synergy by Sharing Information via New Technology	192
<i>Aya Haya GREENFELD</i>	
Assessing Value of Building and Maintenance Activities for Living Religious Heritage: a Case Study on the Katase Catholic Church, Japan	195
<i>Ayako FUKUSHIMA</i>	
From Unconscious Heritage's Need of the Individual to Conscious Protection of Heritage in the Society	202
<i>Daniela TOMŠIČ</i>	
Communitary projects for the protection of the Prehispanic Heritage in San Juan de Lurigancho	208
<i>Elena MOLINA CERPA</i>	
Tool kit of Cognitive Skills for Managing and Community Engagement in the Valorisation of Heritage	214
<i>Graciela A. MOTA BOTELLO</i>	

High Level Education Contribution that Enhances Community Engagement on Heritage Protection and Sustainable Local Socio-Economic Development Skills	220
<i>Graciela A. MOTA BOTELLO</i>	
Teenagers in Local Empowerment in the XXI Century	226
<i>Fruzsina KACSKOVICS</i>	
Gezi Park, Construction of Public Space and Community Engagement in Preservation	232
<i>Lorenzo D'ORSI, Nur UMAR, Ceylin KARBEYAZ</i>	
The Community as Custodians of the Built-in Tangible and Intangible Heritage Values: Historical Center El Sagrario Parish, Mérida, Venezuela	241
<i>María Angélica RIVAS CARRERO</i>	
The Indigenous Cultural Landscape of Plains Aborigine in Taiwan – The Reconstruction from Local People after Natural Disaster	247
<i>HUNG Shih-Feng*, FU Chao-Ching</i>	
Tree Success Stories & Community Strategies: New South Wales & Victoria	253
<i>Stuart READ</i>	
Conserving the Built Heritage of Shekhawati: a Case for Social Involvement	257
<i>Urvashi SRIVASTAVA</i>	
4-2 Developing a bottom-up approach to the conservation, management and protection of heritage	264
Paleontological Landscape “Breal de Orocuál” a Pleistocene Tar Pit Reservoir (2.500.000-11.784 BP)	264
<i>Anibal CARBALLO</i>	
The Impacts of Top-down Protected Site Governance on Conservation and Community Development – What Can Save the Village of Kapikiri and Ancient Heracleia?	270
<i>Aysegul YILMAZ</i>	
The Methods of Participatory Management for the Istanbul Land Walls World Heritage Site	276
<i>Figen KIVILCIM</i>	
COMMUNITY-DRIVEN CONSERVATION AND MANAGEMENT OF CULTURAL HERITAGE: INVESTIGATING SENSE OF PLACE	281
<i>Giuseppina CASSALIA</i>	
Empowering Alberta Treaty Six First Nations in Community Driven Conservation: Museums	286
<i>Judy HALF</i>	
Heritage Conservation and Management Models in Lonjsko Polje Nature Park (Croatia)	291
<i>Ksenija PETRIĆ</i>	
4-3 Harmonising international principles of heritage conservation with local needs, beliefs, practices and traditions	298
Tangible and Intangible Heritage Conservation Involving Local Community Focused on Rituals in Sungryeoljeon and Hyeonjeolsa Shrines of World Heritage Namhansanseong, Republic of Korea	298
<i>CHO Doo-Won</i>	
Involvement of Local Stakeholders in Inhabited Archaeological Sites: Problems illustrated by the Han Chang'an City and the Daming Palace sites of Xi'an, P.R. China	307
<i>Harald HØYEM, Marie Louise ANKER</i>	
Graffiti as Cultural Landscape: Protecting a Practice	315
<i>Tatum TAYLOR</i>	

4-4 Linking heritage protection and sustainable local socio-economic development	323
Montevideo and Its Hidden Wall	323
<i>Adriana CAREAGA, Alejandro GIMÉNEZ</i>	
Embracing a Bittersweet Inheritance: Coffee and Cocoa Shared Built Heritage as a Driver for Local Development, São Tomé and Príncipe as Case Study	329
<i>Ana Silva FERNANDES, Rui Fernandes PÓVOAS, Manuel Fernandes de Sá</i>	
Community-based Ecotourism Planning towards Sustainable Natural Heritage in Anambas Islands Regency, Indonesia	337
<i>Arief RAHMAN, Yuni PRIHAYATI</i>	
Tangible Sustainability for the Intangible Values	344
<i>Ayesha Agha SHAH</i>	
A Research for Providing the Sustainability of Immovable Cultural Heritage of The Historical National Park of Troia	356
<i>Zeliha Hale TOKAY, Erdem SALCAN</i>	
Cultural Heritage Attractiveness and It's Role to Empower Local Community and to Enhance Conservation	362
<i>Reza SHIRAZIAN</i>	
4-5 Implementing community driven heritage conservation through participatory resource mobilization	368
Evolution of Residents' Self-conservation System for Yangdong Historic Village, a World Heritage Site: Progress in 4 years after the village was inscribed	368
<i>KANG Dong-jin</i>	
Landscape and Historic Urban Areas: Possible Common Declensions	375
<i>Elvira PETRONCELLI</i>	
Methodology of Financial Economic Valuation of Heritage Assets that Make Cultural and Natural Landscape: from Global to Local and Vice Versa	380
<i>María Marta RAE</i>	
World Monuments Fund and Community Participation in the Protection of Cultural Heritage	392
<i>Norma BARBACCI</i>	
An Administrative Strategy which Ensures both the Conservation of Cultural Heritage and the Protection of Property Rights: an Example of Surface Rights Scheme of Kinmen National Park	399
<i>YANG Pei-Yao, FU Chao-Ching</i>	
Theme 5	406
Emerging tools for conservation practice	
5-1 Technological innovation	408
Digital Representation Platform and Multi-scale Representation for a Multidisciplinary Knowledge of Some UNESCO World Heritage Sites in Italy	408
<i>Alessandro DE MASI</i>	
Safety Assessment of Masonry Constructions via Numerical Tools: The NOSA-ITACA Code	418
<i>Vincenzo BINANTE, Maria GIRARDI, Massimiliano LUCCHESI, Cristina PADOVANI, Daniele PELLEGRINI, Margherita PORCELLI</i>	
ARtifact Conservation: Representation and Analysis of Spectroscopic and Multispectral Imaging Data Using Augmented Reality	425
<i>David VANONI, Samantha STOUT, Antonino COSENTINO, Falko KUESTER</i>	
Les clés de la connaissance au delà de la « mesure »	431
<i>Emma MANDELLI</i>	

Development of Decision-making Indicators Helping the Management of Interventions in Cultural Heritage	438
<i>Esmeralda PAUPÉRIO, Xavier ROMÃO,</i>	
Shared Web 3D BIM for Cultural Heritage	445
<i>Francesco FASSI, Carlo MONTI, Luigi FREGOINESE, Cristiana ACHILLE</i>	
Earthquake, Survey and Advanced Representation: Knowledge, Restoration and Enhancement of the Architectural Heritage in the City of Ferrara, World Heritage Site	452
<i>Manuela INCERTI, Stefania IURILLI, Gaia LAVORATTI, Uliva VELO</i>	
Methodology for Global Comparative Analysis	459
<i>Paul MAHONEY</i>	
Structural Characterization of Elements of Rammed Earth	465
<i>Sergio CONTRERAS, Arturo MILLÁN</i>	
Uses of Augmented Reality for Architectural Conservation Case of Msfau Findikli Campus Example	470
<i>Tigin TÖRE, Demet BİNAN, Serhat KUT</i>	
5-2 Community engagement	
Inhabitants Values within a Built Conservation Area: Case Study of the Darmo Settlement, Surabaya, Indonesia	476
<i>Erika Yuni ASTUTI</i>	
Community Engagement for Jamaican Heritage: Case Study on Caribbean Historic Urban Landscape	481
<i>Patricia E. GREEN</i>	
5-3 Theoretical tools	488
Concepts et méthodologie pour la conservation de l'architecture moderne – Palais Gustavo Capanema	488
<i>Ana Lucia DE ALMEIDA GONÇALVES</i>	
La restauration des biens culturels : le traitement des lacunes entre théorie et pratique	494
<i>Asma ZARROUK, Fakher KHARRAT</i>	
The Building Values in the Understanding and Conservation of the Architectural Typologies	501
<i>Elena ZAPATERO RODRÍGUEZ</i>	
A World Heritage Application as an Opportunity for Urban Intervention: the Case of Coimbra	508
<i>Joana CAPEL, Vítor MURTINHO</i>	
Applied Studies of Geotextile Usage in Conservation and Restoration of Heritage Building: Case Study of Tahe Baghe Lale Bathhouse, Kerman, Iran	516
<i>Leila RAZAVI, Najmeh HASSAS</i>	
Evaluation de la pertinence de la reconversion architecturale comme garantie de la survie de l'ancien	522
<i>Ons SAKJ, Fakher KHARRAT</i>	
5-4 Communications and Interpretations	528
A Qualification System for Built Heritage Conservation and Ancient Building Rehabilitation	528
<i>Vítor CÓIAS, João MARTINS</i>	

Safety Assessment of Masonry Constructions via Numerical Tools: The NOSA-ITACA Code

Vincenzo BINANTE^(a), Maria GIRARDI^(a), Massimiliano LUCCHESI^(b),

Cristina PADOVANI^(a), Daniele PELLEGRINI^(a), Margherita PORCELLI^(a)

^(a) Istituto di Scienza e Tecnologie dell'Informazione "A. Faedo", ISTI-CNR, Pisa, Italy, +390506212951
cristina.padovani@isti.cnr.it

^(b) Dipartimento di Ingegneria Civile e Ambientale, Università di Firenze, Firenze, +390552756858, massimiliano.lucchesi@unifi.it

Abstract

This paper describes the main features of the NOSA-ITACA code, software for the structural analysis of masonry buildings of historical interest resulting from integration of the finite element code NOSA and the open-source platform SALOME. After a short description of the constitutive equation used to model the mechanical behaviour of masonry constructions, some details are given concerning the code's implementation. Then, the result of a static analysis of the "Voltone" in Livorno, performed via the NOSA-ITACA code, is presented with the aim of highlighting the important role of mathematical models and numerical tools in assessing the safety of historical masonry buildings.

Keywords: *Masonry Buildings; Nonlinear Elasticity; Numerical Methods; Safety Assessment*

1. Introduction

In order to numerically describe the structural behaviour of ancient masonry buildings, it is crucial to realistically model masonry materials, whose response to tension is fundamentally different from that to compression, and whose mechanical properties depend on their constituent elements and the building techniques used. The numerous techniques proposed for modelling masonry structures can be grouped into the following main classes: micro-mechanical approaches [34], [37], rigid block modelling for limit analysis [27], [19] and dynamic analysis [10], homogenisation techniques [8], [18] and continuum models [26], [38], [33], [4], [31]. The most common constitutive models used are the linear elastic [26], [38], [33] and the elastic-plastic model [34], [37], [18] and [4]. The former provides only qualitative information on the global behaviour of masonry structures without however considering their inability to withstand tension, while the latter instead takes into account the strong nonlinearities of such structures' static and dynamic responses.

The studies described in [32], devoted to the development of numerical models for the structural analysis and maintenance of historical masonry buildings, are a contribution in the direction prescribed by article 2 of the Venice Charter [25], which reads "The conservation and restoration of monuments must have recourse to all the sciences and techniques which can contribute to the study and safeguarding of the architectural heritage". These studies have led to the implementation of the finite element code NOSA [15] developed by the laboratory of Mechanics of Materials and Structures (MMS lab) of ISTI-CNR, in which masonry is described as a nonlinear elastic material with zero tensile strength and bounded compressive strength. The code has been successfully applied to a number of studies, commissioned by both private and public bodies, on important historic buildings, such as the Medici Arsenal [32] and the church of San Pietro in Vinculis in Pisa [32], the bell tower of Buti [3], the church of Santa Maria Maddalena in Morano Calabro [32], and the Rognosa tower in San Gimignano [9], [20].

With the aim of improving the performance of the NOSA code and equipping it with an interactive graphic tool for pre- and post-processing, the project "Tools for the modelling and assessment of the structural behaviour of ancient constructions" has been conducted by the MMS lab and a research team from the Department of Civil and Environmental Engineering of the University of Florence. The project [23], funded by the Region of Tuscany (2011-2013), has led to the development of the NOSA-ITACA code, resulting from integration of the NOSA code and the open source graphic platform SALOME [24].

The present paper describes the main features of the NOSA-ITACA code and reports the results of a study of the "Voltone" – a large vaulted masonry structure located beneath Piazza della Repubblica in Livorno, Italy.

2. The NOSA-ITACA code

The constitutive equation for masonry materials proposed in [32] models masonry as a nonlinear hyperelastic material with Young's modulus $E > 0$, Poisson's ratio ν (where $0 \leq \nu < 1/2$), zero tensile strength and maximum compressive stress $\sigma_0 < 0$ and generalizes the constitutive equation of masonry-like materials introduced in [16] and [17]. The total strain tensor is the sum of an elastic term, which depends linearly and isotropically on the Cauchy stress tensor, and two orthogonal inelastic strains: the crushing strain, negative semidefinite, and the fracture strain, positive semidefinite. Constraints on the stress tensor, whose eigenvalues must be negative and greater than or equal to σ_0 , and the orthogonality properties between the stress tensor and the inelastic strains complete the set of equations describing the constitutive behaviour of masonry. The coaxiality of the stress, total strain, fracture strain and crushing strain tensors – valid for isotropic materials – allows for solving the constitutive equation explicitly. Moreover, it is possible to explicitly calculate the derivative of the stress with respect to the total strain, necessary to calculate the tangent stiffness matrix adopted in the Newton-Raphson method for solving the nonlinear equilibrium problem of masonry structures. More details on the constitutive equation and algorithms implemented in the NOSA code for nonlinear static analyses can be found in [32] and [15].

As far as numerical solution of dynamic problems is concerned, the equations of motion are integrated directly, and the Newmark method has been implemented within NOSA in order to perform the integration with respect to time of the system of ordinary differential equations obtained by discretising the structure into finite elements [14]. Moreover, the Newton-Raphson scheme, needed to solve the nonlinear algebraic system obtained at each time step, has been adapted to the dynamic case.

Within the framework of the project "Tools for modelling and assessing the structural behaviour of ancient constructions" [23], a new integrated tool, the NOSA-ITACA code, has been developed based on the finite element code NOSA and SALOME [24], an open-source integration platform for numerical simulation.

The NOSA code has been substantially modified and improved in light of FORTRAN 90 specifications and equipped with new finite elements, thus enhancing its application capabilities. The subroutines devoted to solving linear systems via modified LU factorization have been optimized, thus significantly improving the code's performance.

Moreover, a procedure for the modal analysis of linear elastic structures has been implemented. This procedure, aimed at solving the generalised eigenvalue problem obtained by discretising the structure into finite elements and assembling the stiffness and mass matrices, takes into account both the sparsity of the matrices and the features of master-slave constraints (multipoint constraints). The implementation, described in [35], is based on open-source packages embedded in NOSA: SPARSKIT [36], for managing matrices in sparse format (storage, matrix-vector products), and ARPACK [29], which implements a method based on Lanczos factorization combined with spectral techniques that improve convergence. In particular, ARPACK requires the user to supply an external routine to solve linear systems with the coefficient matrix given by the stiffness or mass matrix. To this end, the ICFS package has been adopted, as it provides an advanced implementation of the conjugate gradient method, accelerated with a preconditioner based on Incomplete Cholesky Factorization with limited memory [30].

Implementation of the NOSA-ITACA code was then completed by integrating the finite element code NOSA within the open source graphic interactive code SALOME [24], used both to define the geometry of the structure under examination and to visualise the results of the structural analysis. Specifically, the NOSA code has been implemented within the SALOME architecture (developed mostly in the C/C++ and Python languages) as an additional module on a par with those already existing (MESH, GEOM, POST-PRO), and called the Nosa module. Through such integration the Nosa module thus allows the user to define the physical quantities to associate to a mesh (materials, element thickness, boundary conditions, loads, analysis type, etc.), display the load applied to the structure, generate the input file for running and monitoring the finite element analysis, etc. The module includes the executable file "nosan" and several CORBA interfaces (with ".idl") for data exchange between the Nosa module and the MESH and/or POST-PRO modules. The Nosa module executes the numerical analysis using as input the card (".crd") created by the Nosa module itself, via the MESH module, and allows the user to monitor the analysis. Finally, the ".t19" output file containing the results of the numerical study is transmitted to the POST-PRO module via conversion into a ".med" output file (fig. 1).

NOSA-ITACA, which enables solving static and dynamic problems of masonry constructions even in the presence of thermal loads, can also be used to model restoration and strengthening operations, such as the application of metal chains and rods, as well as to assess the mechanical behaviour of historical masonry constructions subjected to earthquakes (in light of Italian regulations [11], [12] and [13]). In particular, when a seismic analysis is required, the modal analysis allows determining the conventional loads to be applied to the model in order to simulate the effects of an earthquake in accordance with such regulations [12].

Shell structures, such as vaults, domes, walls or towers can be modelled by using quadrilateral eight-node shell elements based on the Love-Kirchhoff hypothesis [32] or four-node shell element based on Mindlin plate theory [28]. Furthermore, solid elements, such as eight- or twelve-node brick elements, can be used to describe more complex geometries. A detailed description of the NOSA-ITACA code, including the SALOME Nosa module user's guide, the element library, the NOSA keywords reference and user subroutine guides is provided in [6].

Applications of the NOSA-ITACA code are described in [5], [7], [21], [1] and [2]. In particular, [5] and [7] provide detailed descriptions of the study of the "Voltone", whose static safety assessment is outlined in the present paper. Moreover, the code has also been used to study the church of San Francesco in Lucca [21] and the Dome of San Cerbone Cathedral in Massa Marittima [1] and [2].

NOSA-ITACA is a freeware/open-source software for computational mechanics, as is the Salome-Meca - Code_Aster package [22], and is distributed with the aim of disseminating the use of mathematical models and numerical tools in the field of Cultural Heritage.

3. An example application: non linear static analysis of the "Voltone" in Livorno

The "Voltone" (i.e., the great vault), built in 1845 after the design of Bettarini, is a 220-meter long, tunnel-like masonry structure located beneath Piazza della Repubblica in Livorno (fig. 2). It is constituted by a segmental vault, through which the "Fosso Reale" canal flows. The vault is set on two lateral walls and strengthened by buttresses placed at intervals of about 5.8 meters one from the other.

The vault, made of lime mortar and bricks, is about 0.41÷0.43 m thick, with constant thickness along the section and length of the vault, except for the tunnel's ends (in correspondence to the roadways), where the

thickness increases to about 0.7 m. The vault's structure, which is segmental (quite 'lowered' with respect to a semicircle), spans 12.4 m and has a rise of about 1.65 m.

The lateral walls, made up by external layers of a local chalky stone and an inner cohesive mortar core layer, are variable in height above the surface of the canal, decreasing from 5.27 m to 2.65 m. The walls' maximum overall height is 9.3 m with a thickness of about 2.3 m. The walls have been strengthened by some buttresses, whose thickness has been set to 1.6 m for the purposes of the modelling.

In order to realistically model the structural behaviour of this monument via the NOSA-ITACA code, the geometry, the mechanical properties of the constituent materials and the characteristics of the soil and surrounding structures must be known. To this end, some non-destructive tests were conducted (laser scan digital geometry acquisition and georadar scan of the surface of the tunnel and overlying square), and four vertical core samples extracted, two from the wall and surrounding soil, and two from the vault (at the crown and haunch), with the aim of accurately measuring the thickness of the vault and walls and determining the stratigraphy and mechanical properties of their constituent materials. In addition, two horizontal core samples were extracted from the lateral walls, starting from the intrados. The results of these tests were then supplemented by data gathered from historical and archaeological reports. The information collected allowed us to build a three-dimensional finite element model of the structure (fig. 3). The model was built by using 43,228 thick shell and beam elements and 45,379 nodes; the connections between the vault and the lateral wall elements were guaranteed by multipoint constraints able to model the geometrical misalignment between the vault and the wall, and specified by expressly developed user routines. The analyses have been conducted adopting the constitutive equation of masonry-like material with bounded compressive strength, under the assumption that the structure is subjected to permanent and accidental loads, calculated on the basis of the structure's usage class [11], [12]. More precisely, besides the permanent loads, such as the weight of the structure and filling material, and the soil pressure acting on the walls, two different types of accidental loads were considered: a load that models the presence of a tight crowd (of 6 kN/m^2) in the central region of the square, and a traffic load for bridges of category II on the square's ends, where roadways are located.

The analyses have enabled calculating the stress field and then assessing the structure's safety. The results are also reported in terms of the line of thrust, a diagram which allows evaluating the static safety of a masonry vault graphically (Figure 4). Indeed, a line of thrust that is well contained within the arch's ring is an index of static safety [27], [32]. Safety checks aimed at studying the structure's behaviour at its ultimate limit states are being implemented in the NOSA-ITACA code. They are based on the partial safety factors method [12] expressed by the inequality $E_d / R_d \leq 1$, where E_d is the design effect calculated by applying the design loads to the model, while R_d is the design strength, which depends on the materials' mechanical characteristics, the section's geometry and appropriate safety coefficients (Figure 5 shows the ratio between the design value of the applied moment M_{Ed} and the design value of the moment of resistance M_{Rd} , both calculated per unit length).

4. Conclusion

A new software tool for assessing the static and seismic vulnerability of age-old masonry structures, the NOSA-ITACA code, has been presented. This software stems from integration of the finite element code for nonlinear analyses, NOSA, and the open-source graphical user interface platform SALOME. The NOSA-ITACA code models masonry by means of a nonlinear elastic constitutive equation that takes into account masonry's different behaviour in tension and compression. The SALOME tools for pre – post processing operations allow users to easily define the model geometry and loads and visualize the results of the analysis. An application of the code to the "Voltone" in Livorno has been presented, and the structure's mechanical response to permanent and accidental actions assessed. This case study, conducted in collaboration with the Municipality of Livorno, provides an opportunity to validate both the models proposed and the calculation tool developed and highlights the important role played by mathematical models and numerical tools in assessing the mechanical behaviour of historical masonry constructions.

Acknowledgements

This research has been supported by the Region of Tuscany (project NOSA-ITACA, "Tools for modelling and assessing the structural behaviour of ancient constructions: the NOSA-ITACA code", PAR FAS 2007-2013). This support is gratefully acknowledged.

References

- Angelini G., De Falco A., Pellegrini D., “Structural Analysis of the dome of San Cerbone Cathedral in Massa Marittima” Proceeding of SACH2014 - International Conference on Structural Analysis of Historical Constructions F. Peña & M. Chávez (eds.) Mexico City, Mexico, 14–17 October 2014.
- Angelini G., De Falco A., Pellegrini D., “Studio della cupola del Duomo di Massa Marittima” Atti del Convegno SAFE MONUMENTS – Workshop on Conservation vs Safety of Monuments and Historical Constructions, Firenze, 2014.
- Bernardeschi K., Padovani C., Pasquinelli G., “Numerical modelling of the structural behaviour of Buti’s bell tower”. *Journal of Cultural Heritage*, 2004, 5(4), 371-378.
- M. Betti, A. Vignoli, “Numerical assessment of the static and seismic behaviour of the basilica of Santa Maria all’Impruneta (Italy)”, *Construction and Building Materials*, 2011, 25, 4308-4324.
- Binante V., Briccoli Bati S., Girardi M., Lucchesi M., Padovani C. and Pellegrini D., “A Case Study for the NOSA-ITACA Project: the “Voltone” in Livorno”, CC2013 - 14th International Conference on Civil, Structural and Environmental Engineering Computing (Cagliari, Italy, 3-6 September 2013), doi:10.4203/ccp.102.79.
- Binante V., Girardi M., Padovani C., Pasquinelli G. Porcelli M., “NOSA-ITACA documentation” Technical report ISTI 2013 (cnr.isti/2013-TR-050).
- Briccoli Bati S., Girardi M., Lucchesi M., Padovani C. and Pellegrini D., “Analisi strutturale del “Voltone” sottostante Piazza della Repubblica a Livorno”, Atti del Convegno SAFE MONUMENTS – Workshop on Conservation vs Safety of Monuments and Historical Constructions, Firenze 2014.
- S. Briccoli Bati, G. Ranocchiai, L. Rovero, “A micromechanical model for linear homogenization of brick masonry”, *Materials and Structures/Matériaux et Constructions*, 1999, 32, 22-30.
- Callieri M., Corsini M., Girardi M., Padovani C., Pagni A., Pasquinelli G., Scopigno R., “The Rognosa Tower in San Gimignano: digital acquisition and structural analysis”, CST 2010 – Proceedings of The Tenth International Conference on Computational Structures Technology, art. n. 138. Topping B.H.V., Adam J. M., Pallarés F.J., Bru R., Romero M.L. (Editors), Civil Comp Press, 2010.
- B. Chetouane, F. Dubois, M. Vinches, C. Bohatier, “NSCD discrete element method for modelling masonry structures”, *International Journal for Numerical Methods in Engineering*, 2005, 64, 65–94.
- Circolare 2 febbraio 2009, n. 617, C.S.LL.PP, Istruzioni per l’applicazione delle nuove norme tecniche per le costruzioni di cui al D.M. 14 gennaio 2008.
- D.M. 14 gennaio 2008, Norme Tecniche per le Costruzioni, G.U. 4 febbraio 2008, n. 29.
- Direttiva del Presidente del Consiglio dei Ministri del 9 febbraio 2011: Valutazione e riduzione del rischio sismico del patrimonio culturale con riferimento alle Norme Tecniche per le Costruzioni di cui al D. M. 14 gennaio 2008. G.U. n. 47 del 26 febbraio 2011-Suppl. ord. N. 54.
- Degl’Innocenti S., Padovani C. & Pasquinelli G., “Numerical methods for the dynamic analysis of masonry structures”, *Structural Engineering and Mechanics*, 2006, 22(1), 107-130.
- Degl’Innocenti S., Lucchesi M., Padovani C., Pagni A., Pasquinelli G., Zani N, The finite element code COMES-NOSA for the structural analysis of ancient masonry constructions - Version 2.0. User’s manual. Technical report 2008 (cnr.isti/2008-TR-002).
- Del Piero G., “Constitutive equation and compatibility of the external loads for linear elastic masonry-like materials”, *Meccanica*, 1989, 24, 150-162.
- Di Pasquale S., “New trends in the analysis of masonry structures”, *Meccanica*, 1992, Vol. 27, 173-184.
- L. Gambarotta, S. Lagomarsino, “Damage models for the seismic response of brick masonry shear walls. part ii: the continuum model and its application”, *Earthquake engineering and structural dynamics*, 1997, 26, 441-462.
- M. Gilbert, “Gross displacement mechanism analysis of masonry bridges and tunnels”, in *Proceedings of the 11th International Brick/Block masonry conference*, Shanghai, pp. 473-482, 1997.
- Girardi M., Padovani C., Pagni A., Pasquinelli G., “Numerical modeling of masonry towers: the case study of the Rognosa Tower in San Gimignano”, *Advances and Trends in Structural Engineering, Mechanics and Computation*, A. Zingoni (Editor), CRC Press/Balkema, AK Leiden, The Netherlands, 2010.
- Girardi M., Padovani C., Pasquinelli G., “Numerical modelling of the static and seismic behaviour of historical buildings: the church of San Francesco in Lucca”, CC2013 Fourteenth International Conference on Civil, Structural and Environmental Engineering Computing (Cagliari, Italy, 3-6 September 2013). *Proceedings*, article n. 80. B.H.V. Topping, P. Iványi (eds.). Civil-Comp Press, 2013.
- <http://www.code-aster.org/>.
- <http://www.nosaitaca.it/>.

<http://www.salome-platform.org/>.

International Charter for the Conservation and Restoration of Monuments and Sites, The Venice Charter 1964. 2nd International Congress of Architects and Technicians of Historic Monuments, Venice, 1964.

Ivorra S. and Pallarés F. J. “Dynamic investigation on a masonry bell tower”, *Engineering Structures*, 28, 2006, 660-667.

J. Heyman, *The masonry arch*, J. Wiley & Sons, 1982.

Hughes T. J. R, Tezduyar T. E., “Finite elements based upon Mindlin plate theory with particular reference to the four-nodes bilinear isoparametric element”. *Journal of Applied Mechanics*, 1981, 48, 587-596.

Lehoucq R. B.; Sorensen D. C.; Yang C., “ARPACK Users Guide: Solution of Large-Scale Eigenvalue Problems with Implicitly Restarted Arnoldi Methods”. SIAM, 1998.

Lin C.-J., Moré J. J., “Incomplete Cholesky Factorizations with Limited Memory”. *SIAM J. Sci. Comput.*, 1999, 21(1), 24-45.

Lourenço P. B., Mendes N., Marques R., “Earthquakes design and assessment of masonry structures: review and applications”, *Trends in Civil and Structural Engineering Computing*, B.H.V. Topping, L.F. Costas Neves and R. C. Barros (Eds), Saxe-Coburg Publications, Strilingshire, Scotland, 2009, 77-101.

Lucchesi M., Padovani C., Pasquinelli G., Zani N., “Masonry constructions: mechanical models and numerical applications”, *Series: Lecture Notes in Applied and Computational Mechanics*, 39, 2008, Berlin Heidelberg, Springer-Verlag.

Mistler M., Butenweg C., Meskouris K., “Modelling methods of historic masonry buildings under seismic excitation”, *J. Seismol.*, 2006, 10, 497-510.

D.V.Oliveira, P.B. Lourenco, Implementation and validation of a constitutive model for the cyclic behaviour of interface elements. *Computers and Structures*, 2004, 82 (17-19), 1451-1461.

Porcelli M., Binante V., Girardi M., Padovani C., Pasquinelli G., “A solution procedure for constrained eigenvalue problems and its application within the structural finite-element code NOSA-ITACA”, *Calcolo*, 2014, DOI 10.1007/s10092-014-0112-1.

Saad Y., “SPARSKIT: A basic tool kit for sparse matrix computations”. Technical Report, Computer Science Department, University of Minnesota, June 1994.

E. Sacco, “A nonlinear homogenization procedure for periodic masonry”, *European Journal of Mechanics, A/Solids*, 2009, 28, 209-222.

Taliercio, L. Binda, “The Basilica of San Vitale in Ravenna: Investigation on the current structural faults and their mid-term evolution”, *Journal of Cultural Heritage*, 2007, 8, 99-118.

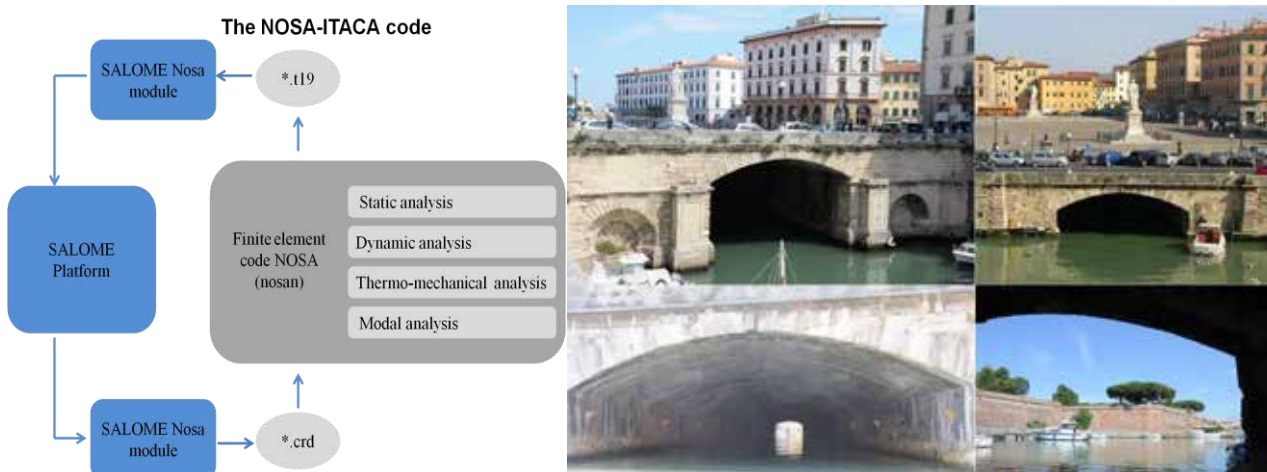


Figure 1: The NOSA-ITACA code.

Figure 2: The “Voltone” in Livorno.

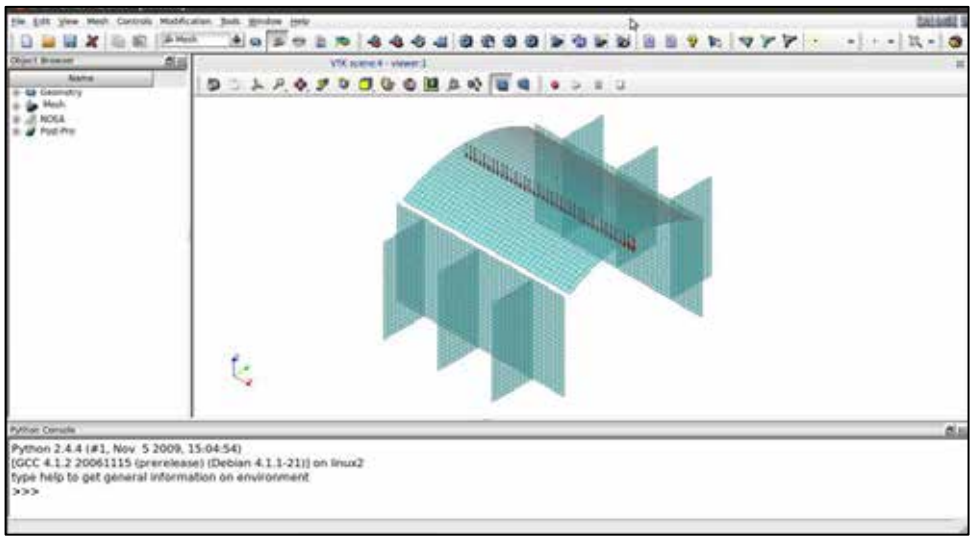


Figure 3: Mesh generation via NOSA-ITACA.

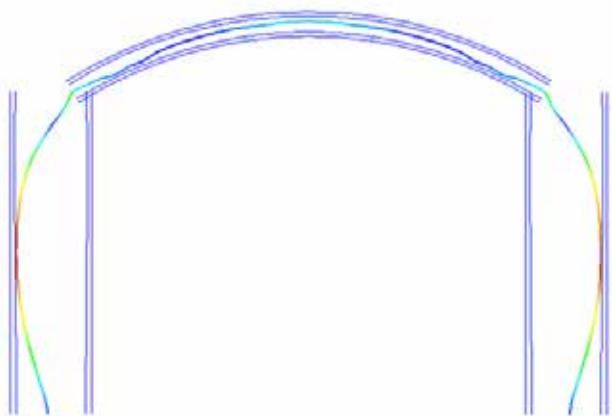


Figure 4: Line of thrust in a transverse section of the “Voltone”.

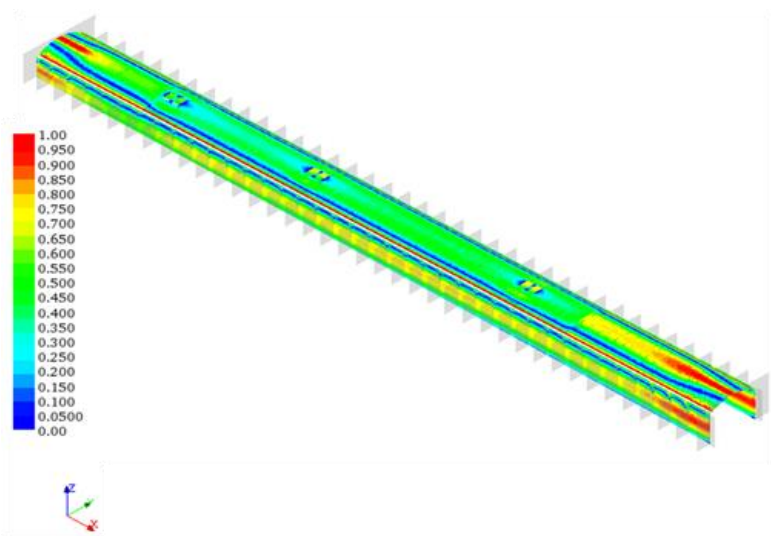


Figure 5: Example safety check: ratios M_{Ed} / M_{Rd} in the vault and lateral walls.