

Supplementary Material

Antioxidant properties of a peptide-enriched fraction derived from salmon (*Salmo salar*) bone collagen.

Claudia Spoliti^a, Patrizia Bottoni^{a,b}, Federica Vincenzoni^{a,b}, Alessio Adamiano^c, Michele Iafisco^c, Clara Piccirillo^d and Alberto Vitali^{*e}.

Contents

Title page	S-1
HPLC runs	S-2
Cytotoxicity Assays extended	S-3
SDS Electrophoresis gel	S-4

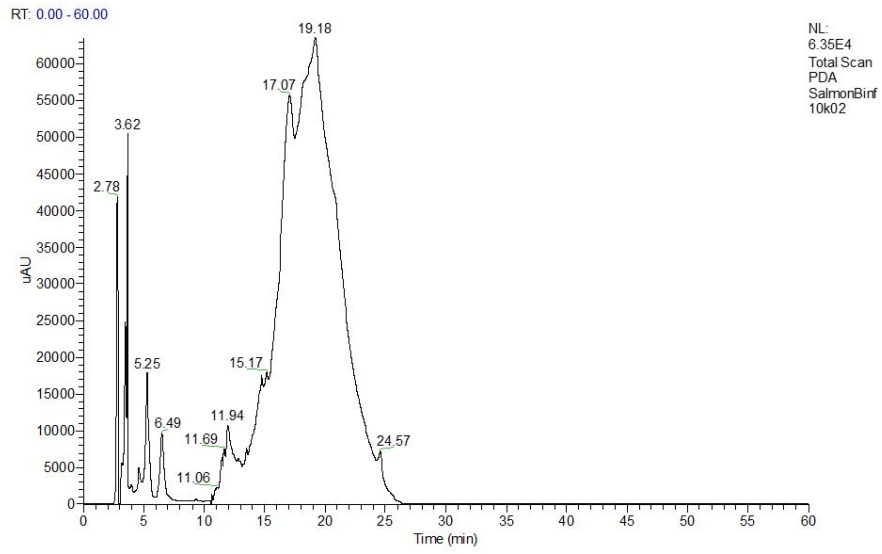


Figure S1. HPLC profile of S1_d_<10

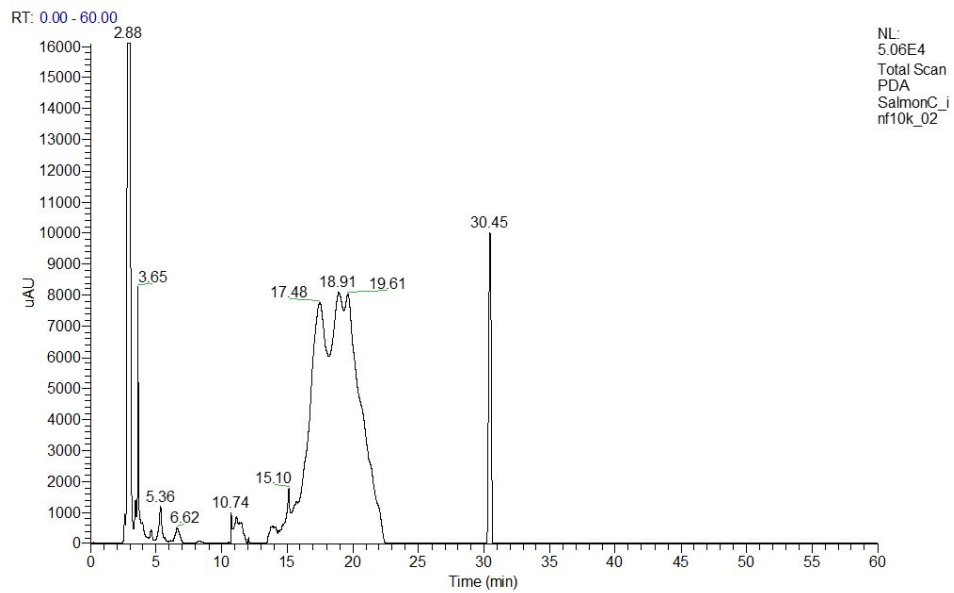


Figure S2. HPLC profile of S2_d_<10

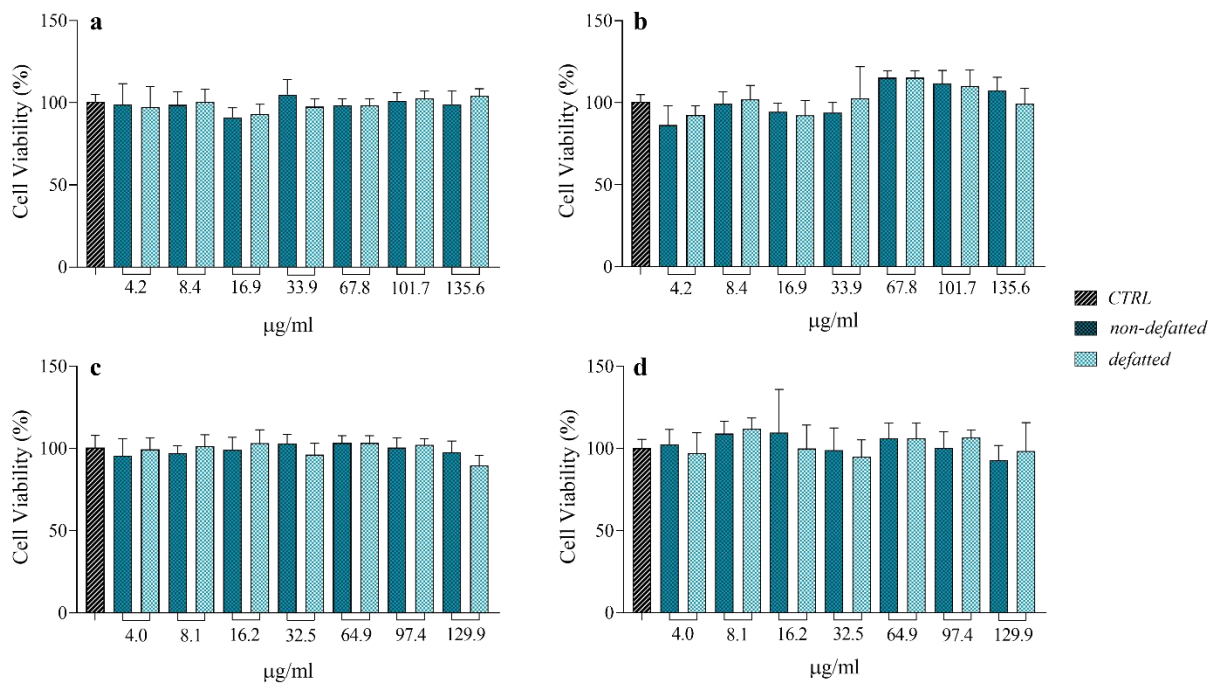


Figure S3. Cytotoxicity tests on 3T3-NIH cell line at 24 h and 48 h. a: S1 and S1_d 24 h; b: S1 and S1_d 48 h; c: S2 and S2_d 24 h; d: S2 and S2_d 48 h. All data are presented as mean \pm SD.

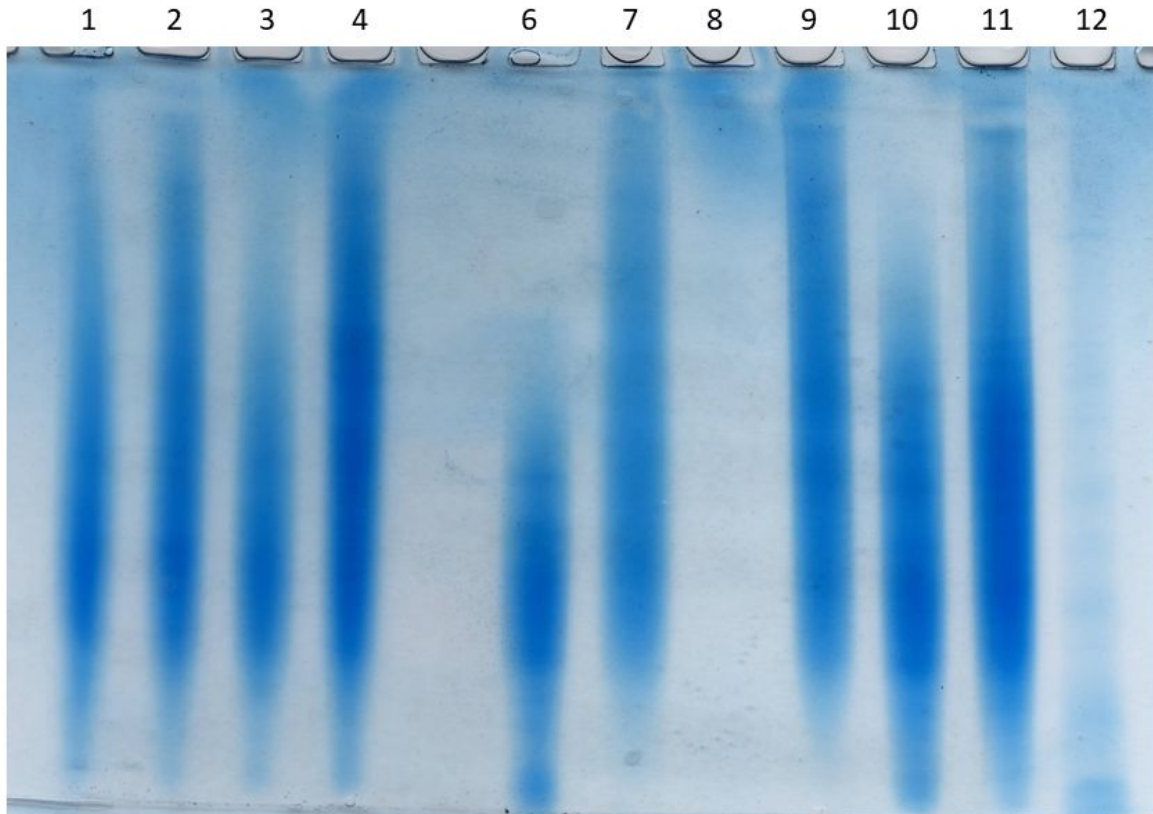


Figure S4. An example of a 10% SDS-PAGE analysis of S1 and S2 samples obtained from salmon bone extracts. Lane 1 and 3: S1 (with DTT, without DTT respectively); Lane 2 and 4: S2 (with DTT without DTT respectively) Lane 6: S1_d < 10 kDa; Lane 7: S2_d < 10 kDa; Lane 9 and 11: S1_d; Lanes 8 and 12: S1_d and S2_d pellets' after acetone precipitation.