

THE LANCET

Public Health

Supplementary appendix 2

This appendix formed part of the original submission and has been peer reviewed. We post it as supplied by the authors.

Supplement to: GBD 2021 Tobacco Forecasting Collaborators. Forecasting the effects of smoking prevalence scenarios on years of life lost and life expectancy from 2022 to 2050: a systematic analysis for the Global Burden of Disease Study 2021. *Lancet Public Health* 2024; **9**: e729–44.

Appendix 2: supplementary results appendix to “Forecasting the impacts of smoking prevalence scenarios on years of life lost and life expectancy from 2022 to 2050 - a systematic analysis for the Global Burden of Disease Study 2021”

This supplement provides additional figures and tables containing more detailed results for “Forecasting the impacts of smoking prevalence scenarios on years of life lost and life expectancy from 2022 to 2050 - a systematic analysis for the Global Burden of Disease Study 2021”.

Table of Contents:

Supplementary Results Table S1. Global all-age and age-standardised prevalence of current and former smokers by location, sex, and scenario, 2022 to 2050	3
Supplementary Results Table S2. Cumulative all-age counts and age-standardised rates of years of life lost (YLLs) between 2022 and 2050 by location, sex, and scenario	10
Supplementary Results Table S3. Life expectancy at birth by location, sex, and scenario	17
Supplementary Results Figure S1. Years of Life Lost (YLLs) by scenario, all causes	27
Supplementary Results Figure S2. Years of Life Lost (YLLs) by scenario, IHD	28
Supplementary Results Figure S3. Years of Life Lost (YLLs) by scenario, lung cancer	29
Supplementary Results Figure S4. Years of Life Lost (YLLs) by scenario, COPD	30
Supplementary Results Figure S5. Life expectancy at birth by super-region, sex, and scenario.....	31
Supplementary Results Figure S6. Global YLLs under Reference scenario.....	32
Supplementary Results Figure S7. Difference in cumulative age-standardised rate of YLLs under Elimination-2023 scenario compared to Reference scenario, 2022 to 2050 (per 100,000), Males.....	33
Supplementary Results Figure S8. Difference in cumulative age-standardised rate of YLLs under Elimination-2023 scenario compared to Reference scenario, 2022 to 2050 (per 100,000), Females.....	34

Supplementary Results Table S1. Global all-age and age-standardised prevalence of current and former smokers by location, sex, and scenario, 2022 and 2050

Location	Sex	Current Smoking Prevalence	Current Smoking Prevalence	Former Smoking Prevalence	Former Smoking Prevalence	Current Smokers (millions)	Current Smokers (millions)	Former Smokers (millions)	Former Smokers (millions)
		2022	2050	2022	2050	2022	2050	2022	2050
Côte d'Ivoire	Female	2.5% (1.91% - 3.18%)	1.77% (1.27% - 2.5%)	1.23% (1.01% - 1.44%)	1.12% (0.92% - 1.33%)	0.36 (0.265 - 0.493)	0.433 (0.3 - 0.655)	0.163 (0.128 - 0.202)	0.269 (0.206 - 0.336)
Côte d'Ivoire	Male	16.7% (15.3% - 18%)	12.6% (10.6% - 16.5%)	9.78% (8.99% - 10.7%)	9.17% (8.37% - 10%)	2.53 (2.17 - 2.9)	3.19 (2.5 - 4.32)	1.16 (1 - 1.34)	2.09 (1.73 - 2.47)
Gambia	Female	0.93% (0.71% - 1.19%)	0.63% (0.48% - 0.8%)	1.49% (1.25% - 1.78%)	1.51% (1.25% - 1.8%)	0.0124 (0.009 - 0.0172)	0.0119 (0.0089 - 0.0162)	0.0166 (0.0132 - 0.0207)	0.0282 (0.0223 - 0.036)
Gambia	Male	17.9% (16.7% - 19.3%)	12.7% (11.8% - 13.8%)	15.3% (14.2% - 16.6%)	15.4% (14.3% - 16.7%)	0.203 (0.175 - 0.231)	0.236 (0.196 - 0.279)	0.154 (0.132 - 0.176)	0.263 (0.217 - 0.312)
Ghana	Female	2.66% (2.1% - 3.35%)	3.06% (2.41% - 3.88%)	1.2% (1.02% - 1.39%)	1.19% (1.01% - 1.38%)	0.494 (0.373 - 0.653)	0.817 (0.601 - 1.07)	0.192 (0.152 - 0.235)	0.333 (0.253 - 0.415)
Ghana	Male	10.5% (9.56% - 11.6%)	12.3% (10.2% - 13.8%)	10.4% (9.67% - 11.2%)	10.2% (9.48% - 11.1%)	1.64 (1.39 - 1.91)	3.33 (2.54 - 4.04)	1.37 (1.17 - 1.57)	2.53 (2.05 - 3.03)
Guinea	Female	1.93% (1.42% - 2.6%)	1.67% (1.23% - 2.22%)	1.19% (0.99% - 1.41%)	1.06% (0.88% - 1.27%)	0.148 (0.0961 - 0.222)	0.23 (0.157 - 0.335)	0.0799 (0.0641 - 0.1)	0.14 (0.108 - 0.175)
Guinea	Male	15.2% (14% - 16.7%)	11.4% (10.2% - 13%)	9.15% (8.53% - 9.96%)	9.2% (8.56% - 9.97%)	0.952 (0.814 - 1.11)	1.49 (1.24 - 1.77)	0.5 (0.429 - 0.565)	0.996 (0.842 - 1.16)
Guinea-Bissau	Female	1.37% (1.07% - 1.83%)	1.86% (1.26% - 2.55%)	1.34% (1.12% - 1.6%)	1.18% (0.97% - 1.42%)	0.0153 (0.0109 - 0.022)	0.0359 (0.023 - 0.0513)	0.0138 (0.0107 - 0.0173)	0.0225 (0.0174 - 0.0289)
Guinea-Bissau	Male	9.92% (8.8% - 11.1%)	13.8% (10.3% - 16.2%)	9.86% (8.99% - 10.7%)	9.01% (8.18% - 9.83%)	0.0969 (0.0807 - 0.114)	0.262 (0.189 - 0.331)	0.0773 (0.0652 - 0.0907)	0.142 (0.113 - 0.171)
Liberia	Female	2.14% (1.68% - 2.67%)	1.78% (1.31% - 2.43%)	2.35% (1.93% - 2.82%)	2.28% (1.86% - 2.72%)	0.0583 (0.0417 - 0.0759)	0.0807 (0.0559 - 0.114)	0.0537 (0.041 - 0.0678)	0.101 (0.0745 - 0.129)
Liberia	Male	11.2% (10.2% - 12.3%)	9.28% (8.24% - 10.6%)	13.2% (12.2% - 14.3%)	13.1% (12.2% - 14.2%)	0.285 (0.232 - 0.335)	0.431 (0.335 - 0.555)	0.309 (0.257 - 0.372)	0.572 (0.459 - 0.7)
Mali	Female	2.82% (2.11% - 3.65%)	3.4% (2.51% - 4.5%)	1.33% (1.11% - 1.57%)	1.18% (0.97% - 1.39%)	0.335 (0.232 - 0.48)	0.968 (0.676 - 1.37)	0.156 (0.122 - 0.192)	0.331 (0.257 - 0.414)
Mali	Male	19.1% (17.8% - 20.6%)	19.1% (16.5% - 22.8%)	10.1% (9.29% - 11%)	10.1% (9.22% - 11%)	2.27 (1.89 - 2.68)	5.57 (4.41 - 7.01)	1.06 (0.892 - 1.23)	2.55 (2.12 - 3.04)
Mauritania	Female	8.86% (7.29% - 10.6%)	7.24% (5.9% - 8.86%)	1.44% (1.2% - 1.69%)	1.29% (1.07% - 1.56%)	0.232 (0.183 - 0.286)	0.288 (0.215 - 0.375)	0.0324 (0.0255 - 0.04)	0.0501 (0.039 - 0.0631)
Mauritania	Male	26.8% (24.6% - 29.4%)	21.9% (19.8% - 24.1%)	9.24% (8.52% - 10%)	8.64% (7.88% - 9.48%)	0.594 (0.504 - 0.694)	0.867 (0.703 - 1.05)	0.171 (0.148 - 0.198)	0.305 (0.254 - 0.37)
Niger	Female	1.44% (1.09% - 1.85%)	1.07% (0.77% - 1.54%)	1.32% (1.12% - 1.6%)	1.27% (1.07% - 1.53%)	0.212 (0.148 - 0.286)	0.433 (0.293 - 0.654)	0.166 (0.131 - 0.211)	0.448 (0.345 - 0.582)
Niger	Male	12.5% (11.3% - 13.6%)	9.78% (8.52% - 12%)	11% (10.2% - 11.9%)	10.9% (10.1% - 11.8%)	1.67 (1.39 - 2)	3.86 (3.09 - 4.86)	1.22 (1.03 - 1.42)	3.38 (2.78 - 4.06)
Nigeria	Female	1% (0.74% - 1.31%)	0.5% (0.36% - 0.68%)	1% (0.85% - 1.18%)	0.97% (0.82% - 1.15%)	1.22 (0.852 - 1.78)	1.11 (0.762 - 1.61)	1.12 (0.908 - 1.38)	2.11 (1.68 - 2.68)
Nigeria	Male	5.87% (5.19% - 6.52%)	3.38% (2.91% - 3.97%)	5.56% (5.14% - 6.03%)	5.25% (4.76% - 5.81%)	6.14 (5.18 - 7.19)	7.39 (5.71 - 9.36)	4.79 (4.21 - 5.52)	9.72 (8 - 11.6)
Sao Tome and Principe	Female	1.87% (1.36% - 2.51%)	1.61% (1.16% - 2.27%)	2.94% (2.5% - 3.46%)	2.87% (2.42% - 3.36%)	0.002 (0.0014 - 0.0029)	0.002 (0.0014 - 0.0028)	0.0029 (0.0023 - 0.0035)	0.0036 (0.0027 - 0.0047)
Sao Tome and Principe	Male	7.44% (6.6% - 8.23%)	6.85% (5.9% - 8.28%)	18.6% (17.3% - 20.2%)	20% (18.6% - 21.7%)	0.0078 (0.0064 - 0.0091)	0.0085 (0.0065 - 0.011)	0.0189 (0.0161 - 0.0217)	0.0251 (0.0193 - 0.0313)
Senegal	Female	1.5% (1.1% - 2.04%)	0.78% (0.54% - 1.17%)	0.65% (0.54% - 0.77%)	0.65% (0.54% - 0.78%)	0.138 (0.0941 - 0.195)	0.106 (0.0721 - 0.165)	0.0524 (0.0417 - 0.0648)	0.0879 (0.0694 - 0.109)
Senegal	Male	12.3% (11.4% - 13.3%)	5.75% (5.17% - 6.73%)	16% (14.8% - 17.1%)	16.9% (15.7% - 18.1%)	0.992 (0.844 - 1.13)	0.809 (0.666 - 0.985)	1.1 (0.954 - 1.25)	2.2 (1.84 - 2.57)
Sierra Leone	Female	7.08% (5.73% - 8.58%)	4.69% (3.53% - 6.33%)	2.74% (2.29% - 3.3%)	2.33% (1.87% - 2.93%)	0.351 (0.269 - 0.464)	0.375 (0.269 - 0.523)	0.104 (0.0855 - 0.13)	0.177 (0.137 - 0.23)
Sierra Leone	Male	24.1% (22.7% - 25.5%)	18.1% (16.2% - 20.5%)	6.87% (6.29% - 7.5%)	6.47% (5.88% - 7.18%)	1.02 (0.9 - 1.15)	1.4 (1.18 - 1.67)	0.213 (0.186 - 0.243)	0.43 (0.354 - 0.515)
Togo	Female	2.11% (1.62% - 2.74%)	1.37% (1.04% - 1.79%)	1.54% (1.26% - 1.85%)	1.52% (1.24% - 1.84%)	0.0881 (0.0635 - 0.124)	0.0899 (0.0661 - 0.126)	0.0667 (0.0521 - 0.0849)	0.101 (0.0786 - 0.128)
Togo	Male	12.4% (11.2% - 13.4%)	8.32% (7.47% - 9.25%)	11.8% (10.8% - 12.7%)	11.8% (10.8% - 12.8%)	0.481 (0.397 - 0.562)	0.545 (0.438 - 0.659)	0.429 (0.355 - 0.501)	0.733 (0.58 - 0.876)

Supplementary Results Table S2. Cumulative all-age counts and age-standardised rates of years of life lost (YLLs) between 2022 to 2050 by location, sex, and scenario

Location	Sex	All-Age Count (Millions)				Age-Standardized Rate (per 100,000)			
		Reference	Difference between Reference and Elimination - 2023	Difference between Reference and Elimination - 2050	Difference between Reference and Elimination - 2050 and Elimination - 2023	Reference	Difference between Reference and Elimination - 2023	Difference between Reference and Elimination - 2050	Difference between Reference and Elimination - 2050 and Elimination - 2023
Cabo Verde	Female	1.08 (0.849-1.32)	0.00625 (0.00478-0.00795)	0.00194 (0.00146-0.00253)	0.00431 (0.00332-0.0054)	10300 (8260-12600)	60.7 (47.6-75.7)	17.8 (13.6-22.7)	42.9 (33.9-53.2)
Cabo Verde	Male	1.91 (1.49-2.35)	0.0506 (0.0395-0.0614)	0.0177 (0.0136-0.0223)	0.0329 (0.0261-0.0392)	21100 (17200-25200)	57.2 (45.7-68.6)	17.7 (14.0-21.6)	39.6 (31.8-46.9)
Cameroon	Female	136 (99.5-199)	0.117 (0.0789-0.16)	0.0247 (0.0183-0.0326)	0.0919 (0.0601-0.128)	24200 (18600-34800)	40.7 (29.3-55.6)	13.7 (10.8-17.2)	27.1 (18.7-38.1)
Cameroon	Male	176 (128-239)	1.92 (1.25-2.69)	0.747 (0.459-1.06)	1.17 (0.779-1.6)	31900 (24900-42500)	52.1 (34.0-71.9)	17.0 (10.4-24.1)	35.2 (23.8-47.9)
Chad	Female	153 (113-201)	0.138 (0.0987-0.186)	0.0172 (0.0123-0.0234)	0.121 (0.0863-0.162)	30900 (24400-39700)	94.1 (68.3-126)	12 (8.68-16)	82.1 (59.5-110)
Chad	Male	187 (134-248)	1.02 (0.733-1.31)	0.358 (0.248-0.475)	0.661 (0.477-0.837)	38100 (29200-48900)	65.7 (47.5-86.1)	188 (136-246)	469 (342-616)
Côte d'Ivoire	Female	112 (79.8-185)	0.279 (0.18-0.398)	0.0732 (0.045-0.105)	0.206 (0.134-0.293)	22500 (16800-29900)	87.5 (57-126)	21.8 (13.7-31.8)	65.8 (42.9-94)
Côte d'Ivoire	Male	153 (116-202)	2.3 (1.47-3.09)	0.643 (0.406-0.897)	1.66 (1.12-2.2)	30300 (23400-40600)	66.9 (44.7-92.5)	177 (119-245)	491 (327-679)
Gambia	Female	8.21 (6.46-10.2)	0.00894 (0.00646-0.0121)	0.00384 (0.00267-0.00524)	0.00511 (0.00378-0.00677)	21900 (17700-26700)	38.3 (27.9-50.5)	14.2 (10.1-19.2)	24.1 (17.3-31.3)
Gambia	Male	10.5 (8.41-13)	0.193 (0.148-0.251)	0.0694 (0.0508-0.0942)	0.123 (0.0966-0.157)	29500 (24300-35400)	79.7 (60.6-101)	23.5 (17.8-30.5)	56.2 (41.7-70.5)
Ghana	Female	128 (94.4-186)	0.347 (0.249-0.461)	0.0878 (0.0624-0.118)	0.259 (0.181-0.346)	21800 (17100-28000)	82.4 (60-110)	22.2 (16.3-29.4)	60.2 (43.6-81.2)
Ghana	Male	168 (126-225)	2.42 (1.83-3.03)	1.4 (1.04-1.79)	1.82 (1.38-2.25)	31700 (25200-40300)	716 (570-897)	409 (321-512)	307 (242-386)
Guinea	Female	79.9 (56.9-134)	0.145 (0.106-0.191)	0.0464 (0.0334-0.0625)	0.0985 (0.0724-0.129)	29300 (21500-44900)	108 (78.7-145)	32.8 (23.7-44.7)	74.8 (55.1-101)
Guinea	Male	90.2 (65.8-159)	1.25 (0.927-1.6)	0.466 (0.334-0.612)	0.786 (0.586-0.987)	33900 (25300-51800)	98.8 (72.8-130)	329 (241-435)	659 (486-860)
Guinea-Bissau	Female	10.4 (8.14-13.7)	0.0228 (0.0163-0.0302)	0.011 (0.00771-0.0146)	0.0118 (0.00848-0.0156)	29800 (23900-39400)	101 (74.3-135)	43.2 (31.1-59.2)	57.6 (43.1-76.4)
Guinea-Bissau	Male	13.7 (10.8-17.9)	0.199 (0.15-0.259)	0.118 (0.0868-0.156)	0.0813 (0.0601-0.102)	42900 (34800-57500)	107 (83.0-140)	56.1 (43.2-75.6)	50.5 (39.7-64.9)
Liberia	Female	23.9 (16.2-33.5)	0.0637 (0.0403-0.0883)	0.0257 (0.016-0.0364)	0.038 (0.0244-0.0522)	26800 (19200-38600)	95.1 (64.2-136)	34.5 (22.6-50.4)	60.6 (41.3-85.7)
Liberia	Male	27.5 (18.7-42)	0.364 (0.242-0.484)	0.18 (0.111-0.244)	0.185 (0.123-0.24)	29500 (21200-43200)	518 (362-707)	220 (142-310)	297 (211-404)
Mali	Female	161 (115-247)	0.273 (0.194-0.366)	0.142 (0.0981-0.197)	0.131 (0.093-0.174)	28300 (22500-37400)	123 (88.3-167)	55.2 (38.8-75.2)	67.8 (49.1-91.4)
Mali	Male	195 (144-260)	1.7 (1.31-2.12)	0.84 (0.649-1.06)	0.857 (0.667-1.06)	31800 (25600-39700)	84.7 (67.4-108)	41.7 (33.2-53.3)	430 (339-549)
Mauritania	Female	13.6 (10.8-17.5)	0.0565 (0.0413-0.0787)	0.00987 (0.00697-0.014)	0.0466 (0.0343-0.0647)	18700 (15000-23800)	88.5 (63.8-123)	14 (9.87-20.1)	74.5 (53.9-104)
Mauritania	Male	15.4 (12.2-19.5)	0.232 (0.171-0.307)	0.062 (0.042-0.087)	0.17 (0.128-0.222)	20900 (16600-26500)	436 (321-588)	94.5 (67.5-132)	341 (253-458)
Niger	Female	203 (141-347)	0.094 (0.0642-0.13)	0.0217 (0.0142-0.0307)	0.0723 (0.0505-0.0998)	30400 (22200-45800)	38.6 (26.4-54.3)	8.59 (5.82-12)	30 (20.8-42.4)
Niger	Male	227 (153-394)	0.784 (0.509-1.08)	0.207 (0.121-0.293)	0.577 (0.355-0.778)	33500 (24000-48800)	379 (273-500)	111 (82.9-141)	268 (188-360)
Nigeria	Female	1220 (880-1800)	0.755 (0.514-1.04)	0.244 (0.16-0.342)	0.511 (0.35-0.696)	25200 (19000-36100)	27.7 (18.5-39.4)	8.57 (5.66-12.4)	19.1 (12.8-27)
Nigeria	Male	1380 (1020-2120)	5.48 (3.71-7.36)	1.11 (0.727-1.53)	4.37 (3-5.82)	29800 (22700-40100)	224 (151-310)	36.1 (24-50.1)	188 (130-260)
Sao Tome and Principe	Female	0.468 (0.373-0.594)	0.00213 (0.00166-0.00275)	0.00118 (0.00098-0.00154)	0.000988 (0.00075-0.00124)	15600 (12600-19000)	79.7 (62.5-99.7)	40.9 (31.9-51.7)	38.8 (30.7-48.5)
Sao Tome and Principe	Male	0.591 (0.477-0.737)	0.0158 (0.0129-0.0192)	0.00807 (0.00647-0.0101)	0.00773 (0.00648-0.00922)	19900 (16800-23600)	605 (516-705)	276 (226-331)	329 (287-380)
Senegal	Female	48.7 (39.4-60.2)	0.0496 (0.0362-0.0652)	0.00533 (0.00384-0.00714)	0.0443 (0.0324-0.0581)	18100 (14900-22300)	23.9 (17.4-32.3)	2.45 (1.76-3.35)	21.4 (15.6-29)
Senegal	Male	60.3 (49.2-74.2)	0.788 (0.6-1)	0.253 (0.186-0.331)	0.535 (0.415-0.67)	23200 (19000-28600)	398 (300-512)	106 (78.9-138)	293 (223-373)
Sierra Leone	Female	48 (34.5-69.2)	0.149 (0.0843-0.215)	0.0285 (0.0163-0.0415)	0.12 (0.07-0.174)	29500 (22100-42700)	126 (76.5-186)	22.7 (13.6-34.2)	103 (62.9-151)
Sierra Leone	Male	55 (39.3-75.5)	0.736 (0.5-0.965)	0.319 (0.205-0.438)	0.417 (0.297-0.533)	33100 (24300-47100)	684 (476-929)	247 (163-343)	437 (307-585)
Togo	Female	32.7 (24.2-46.9)	0.132 (0.094-0.175)	0.0753 (0.0531-0.101)	0.0566 (0.0406-0.0726)	22800 (16800-32600)	124 (85.5-170)	64.9 (43.9-90.4)	59 (41.7-81)
Togo	Male	41.3 (30.4-59.8)	0.712 (0.479-0.925)	0.347 (0.221-0.46)	0.365 (0.255-0.465)	32100 (23800-43300)	849 (561-1150)	378 (242-517)	471 (318-632)

Supplementary Results Table S3. Life expectancy at birth by location, sex, and scenario

Location	Sex	2050			Change between 2022 and 2050		
		Reference	Difference between		Reference	Elimination - 2023	Elimination - 2050
			Elimination-2023 and Reference	Elimination-2050 and Reference			
Global	Male	76.1 (73.6-78)	1.51 (1.45-1.58)	0.957 (0.912-1)	5.07 (2.79-6.67)	6.58 (4.27-8.23)	6.03 (3.73-7.66)
Global	Female	80.6 (78.1-82.6)	0.414 (0.395-0.435)	0.213 (0.197-0.23)	4.39 (1.82-6.16)	4.81 (2.22-6.58)	4.61 (2.02-6.38)
Central Europe, Eastern Europe, and Central Asia	Male	75.6 (73.5-77.2)	1.87 (1.81-1.95)	1.08 (1.04-1.12)	6.06 (4.04-7.53)	7.93 (5.92-9.42)	7.13 (5.14-8.61)
Central Europe, Eastern Europe, and Central Asia	Female	82.1 (79.9-84.1)	0.326 (0.309-0.343)	0.118 (0.11-0.127)	4.72 (2.61-6.4)	5.04 (2.94-6.73)	4.84 (2.73-6.52)
Central Asia	Male	75.9 (72-78.8)	1.94 (1.85-2.04)	1.28 (1.22-1.35)	6.95 (3.23-9.75)	8.88 (5.16-11.7)	8.23 (4.5-11.1)
Central Asia	Female	81.6 (77.7-84.8)	0.144 (0.126-0.166)	0.0389 (0.0298-0.0476)	6.25 (2.56-9.4)	6.4 (2.72-9.54)	6.29 (2.6-9.44)
Armenia	Male	79.8 (77.6-81.7)	3.38 (3.06-3.76)	2.34 (2.12-2.6)	7.05 (4.59-10.1)	10.4 (7.81-13.6)	9.39 (6.8-12.5)
Armenia	Female	84.8 (82.9-86.6)	0.104 (0.094-0.114)	0.0198 (0.0175-0.0223)	5.34 (3.14-8.14)	5.45 (3.24-8.24)	5.36 (3.16-8.16)
Azerbaijan	Male	76.7 (73.2-79.6)	2.75 (2.52-3.04)	2.06 (1.87-2.29)	6.95 (3.78-9.66)	9.7 (6.36-12.5)	9.01 (5.67-11.8)
Azerbaijan	Female	81.8 (78-85.2)	0.0492 (0.0415-0.0614)	0.00714 (0.00599-0.00901)	6.52 (3.01-9.64)	6.57 (3.06-9.68)	6.52 (3.02-9.64)
Georgia	Male	73.3 (71.7-74.8)	3.1 (2.87-3.4)	2.11 (1.96-2.29)	4 (2.43-5.24)	7.1 (5.4-8.53)	6.11 (4.47-7.45)
Georgia	Female	84.4 (82.4-86.3)	0.303 (0.285-0.319)	0.0632 (0.0583-0.0693)	5.81 (3.84-7.49)	6.11 (4.14-7.79)	5.87 (3.91-7.55)
Kazakhstan	Male	75.1 (72.4-77)	1.59 (1.47-1.71)	0.785 (0.725-0.847)	9.05 (6.43-11.6)	10.6 (8.05-13.1)	9.83 (7.24-12.3)
Kazakhstan	Female	81.7 (79.1-83.9)	0.124 (0.11-0.146)	0.0197 (0.0167-0.0243)	7.68 (5.05-10.3)	7.8 (5.19-10.5)	7.69 (5.08-10.4)
Kyrgyzstan	Male	74.9 (71.3-78.2)	3.12 (2.92-3.34)	2.27 (2.12-2.44)	7.48 (3.74-10.6)	10.6 (6.82-13.8)	9.75 (5.99-12.9)
Kyrgyzstan	Female	81.6 (78.3-84.9)	0.3 (0.258-0.349)	0.0668 (0.0555-0.0816)	6.72 (3.11-10)	7.02 (3.45-10.3)	6.78 (3.19-10.1)
Mongolia	Male	70.3 (66.3-73.8)	2.86 (2.63-3.11)	2.07 (1.91-2.25)	3.18 (-0.527-5.97)	6.04 (2.28-8.89)	5.25 (1.54-8.09)
Mongolia	Female	80.4 (76.9-83.3)	0.456 (0.421-0.494)	0.219 (0.199-0.241)	4.39 (1.08-6.93)	4.85 (1.55-7.37)	4.61 (1.31-7.14)
Tajikistan	Male	77.8 (74-81.4)	1.04 (0.926-1.16)	0.632 (0.56-0.709)	6.46 (2.44-10.1)	7.5 (3.56-11.1)	7.1 (3.09-10.8)
Tajikistan	Female	80.3 (75.3-84.4)	0.133 (0.11-0.166)	0.0461 (0.0366-0.0613)	5.49 (1.22-9.63)	5.62 (1.38-9.74)	5.53 (1.28-9.66)
Turkmenistan	Male	73.9 (67.8-78.9)	1.08 (0.988-1.21)	0.545 (0.506-0.606)	7.21 (2.26-11.3)	8.29 (3.4-12.4)	7.75 (2.82-11.9)
Turkmenistan	Female	80.8 (74.3-86.3)	0.143 (0.11-0.189)	0.03 (0.0206-0.0464)	7.29 (2.09-12.4)	7.43 (2.43-12.5)	7.32 (2.13-12.4)
Uzbekistan	Male	76.5 (71.3-80.5)	1.64 (1.51-1.83)	1.12 (1.04-1.25)	5.61 (1.3-9.18)	7.25 (3.01-10.8)	6.73 (2.48-10.3)
Uzbekistan	Female	81.3 (76.6-85.6)	0.111 (0.0937-0.141)	0.0317 (0.0262-0.0414)	5.48 (1.03-9.34)	5.59 (1.16-9.44)	5.51 (1.07-9.36)
Central Europe	Male	77.7 (76.7-78.5)	1.69 (1.59-1.82)	0.95 (0.893-1.02)	4.52 (3.83-5.09)	6.21 (5.41-6.86)	5.47 (4.73-6.08)
Central Europe	Female	83.7 (82.6-84.6)	0.701 (0.654-0.758)	0.295 (0.274-0.32)	3.81 (2.84-4.58)	4.51 (3.51-5.32)	4.1 (3.13-4.89)
Albania	Male	79.7 (77.6-81.4)	2.88 (2.56-3.29)	2.21 (1.96-2.53)	4.29 (2.39-5.79)	7.16 (5.15-8.78)	6.49 (4.48-8.06)
Albania	Female	83.1 (81.2-84.9)	0.666 (0.587-0.756)	0.283 (0.248-0.327)	3.39 (1.55-4.94)	4.06 (2.19-5.69)	3.68 (1.82-5.26)
Bosnia and Herzegovina	Male	80 (77.7-82.8)	2.93 (2.52-3.34)	1.91 (1.63-2.18)	5.28 (3.42-7.19)	8.21 (6.1-10.2)	7.19 (5.16-9.19)
Bosnia and Herzegovina	Female	84.4 (81.7-87)	1.15 (1.02-1.31)	0.477 (0.414-0.555)	4.63 (2.22-6.43)	5.79 (3.25-7.62)	5.11 (2.63-6.93)
Bulgaria	Male	74 (72.2-75.6)	1.52 (1.39-1.67)	0.78 (0.701-0.869)	5.08 (3.92-6.18)	6.59 (5.49-7.71)	5.86 (4.76-6.95)
Bulgaria	Female	80.4 (78.9-81.9)	0.619 (0.547-0.695)	0.275 (0.239-0.318)	4.41 (3.31-5.63)	5.03 (3.94-6.25)	4.69 (3.59-5.9)
Croatia	Male	79.3 (78.3-80.4)	1.92 (1.72-2.15)	1.16 (1.05-1.29)	4.5 (3.73-5.29)	6.43 (5.56-7.24)	5.67 (4.83-6.47)
Croatia	Female	84.1 (83-85.1)	0.711 (0.636-0.805)	0.294 (0.256-0.34)	3.35 (2.47-4.22)	4.06 (3.14-4.97)	3.65 (2.74-4.54)
Czechia	Male	80.4 (79.2-81.6)	1.5 (1.37-1.64)	0.817 (0.752-0.894)	3.66 (2.89-4.32)	5.16 (4.3-5.87)	4.48 (3.66-5.13)
Czechia	Female	85.4 (84.1-86.8)	0.596 (0.539-0.663)	0.204 (0.182-0.231)	2.92 (1.88-3.89)	3.51 (2.44-4.53)	3.12 (2.07-4.11)
Hungary	Male	78 (76.7-79.2)	1.54 (1.39-1.7)	0.76 (0.689-0.84)	4.82 (4-5.53)	6.36 (5.49-7.08)	5.58 (4.73-6.29)
Hungary	Female	82.9 (81.5-84.2)	0.716 (0.632-0.799)	0.255 (0.223-0.288)	3.21 (2.13-4.09)	3.92 (2.83-4.83)	3.46 (2.38-4.35)
Montenegro	Male	76.7 (75.4-78)	2.01 (1.76-2.28)	1.29 (1.13-1.46)	4.4 (3.6-5.34)	6.41 (5.52-7.34)	5.69 (4.84-6.61)
Montenegro	Female	81.1 (80-82.3)	0.807 (0.721-0.898)	0.406 (0.363-0.463)	3.34 (2.36-4.43)	4.15 (3.13-5.23)	3.75 (2.76-4.81)
North Macedonia	Male	77.3 (75.7-78.9)	1.9 (1.67-2.18)	1.15 (1.01-1.31)	6.34 (4.71-8.71)	8.24 (6.55-10.6)	7.49 (5.8-9.83)
North Macedonia	Female	80 (78.5-81.4)	0.729 (0.646-0.82)	0.301 (0.264-0.343)	5.19 (3.66-7.08)	5.92 (4.41-7.76)	5.49 (3.97-7.36)
Poland	Male	77.5 (76.4-78.7)	1.63 (1.49-1.82)	0.883 (0.805-0.978)	4.07 (3.44-4.85)	5.7 (5.02-6.48)	4.95 (4.32-5.73)
Poland	Female	84.8 (83.9-85.9)	0.744 (0.663-0.837)	0.309 (0.272-0.353)	3.68 (2.9-4.47)	4.43 (3.6-5.21)	3.99 (3.19-4.78)
Romania	Male	76.2 (74.6-77.8)	1.64 (1.51-1.79)	0.877 (0.807-0.953)	4.49 (3.21-5.45)	6.13 (4.76-7.1)	5.37 (4.05-6.31)
Romania	Female	83 (81.2-84.6)	0.541 (0.491-0.59)	0.221 (0.196-0.246)	4.02 (2.55-5.29)	4.56 (3.1-5.82)	4.24 (2.79-5.51)
Serbia	Male	77.3 (75.8-78.7)	1.8 (1.6-2.03)	1.01 (0.889-1.13)	4.27 (3.42-5.2)	6.07 (5.13-7.01)	5.28 (4.4-6.23)
Serbia	Female	81.5 (80.2-82.7)	1.09 (0.977-1.22)	0.549 (0.489-0.625)	3.68 (2.55-4.78)	4.76 (3.65-5.95)	4.23 (3.13-5.38)
Slovakia	Male	78.2 (76.8-79.6)	1.66 (1.48-1.84)	1.06 (0.946-1.17)	4.49 (3.4-5.4)	6.15 (4.97-7.15)	5.55 (4.38-6.51)
Slovakia	Female	83.8 (82.3-85.2)	0.321 (0.282-0.364)	0.127 (0.11-0.147)	3.56 (2.24-4.73)	3.88 (2.55-5.06)	3.68 (2.37-4.87)

Supplementary Results Table S3. Life expectancy at birth by location, sex, and scenario

Location	Sex	2050			Change between 2022 and 2050		
		Reference	Difference between		Reference	Elimination - 2023	Elimination - 2050
			Elimination-2023 and Reference	Elimination-2050 and Reference			
Slovenia	Male	82.2 (81.3-83.1)	0.99 (0.88-1.1)	0.395 (0.348-0.446)	3.66 (3.24-4.07)	4.65 (4.15-5.07)	4.05 (3.6-4.46)
Slovenia	Female	87.5 (86.4-88.5)	0.461 (0.394-0.532)	0.17 (0.14-0.203)	2.7 (2.1-3.23)	3.16 (2.53-3.69)	2.87 (2.26-3.4)
Eastern Europe	Male	74.7 (72.4-76.7)	1.95 (1.86-2.05)	1.06 (1.01-1.12)	6.48 (4.65-7.97)	8.43 (6.62-9.98)	7.54 (5.76-9.05)
Eastern Europe	Female	81.9 (79.6-84)	0.226 (0.202-0.262)	0.0736 (0.062-0.09)	4.74 (2.81-6.5)	4.97 (3.07-6.7)	4.82 (2.9-6.56)
Belarus	Male	73.6 (70.5-76.3)	3.01 (2.8-3.26)	2.16 (2-2.33)	6.57 (4.14-8.52)	9.58 (7.08-11.6)	8.72 (6.24-10.7)
Belarus	Female	82.9 (80-85.4)	0.175 (0.148-0.222)	0.0425 (0.0337-0.059)	6.24 (3.65-8.66)	6.42 (3.88-8.82)	6.29 (3.72-8.7)
Estonia	Male	79.4 (78.2-80.7)	1.09 (1-1.21)	0.497 (0.457-0.547)	5.78 (5.03-6.44)	6.88 (6.09-7.57)	6.28 (5.52-6.95)
Estonia	Female	86 (84.9-87.1)	0.285 (0.255-0.322)	0.103 (0.0904-0.117)	4.26 (3.33-5.15)	4.54 (3.62-5.45)	4.36 (3.43-5.25)
Latvia	Male	75.9 (74.5-77.4)	1.69 (1.57-1.82)	0.885 (0.819-0.949)	6.3 (5.05-7.74)	7.98 (6.74-9.45)	7.18 (5.95-8.65)
Latvia	Female	83.8 (82.4-85.1)	0.323 (0.294-0.354)	0.113 (0.102-0.127)	5.28 (3.81-6.92)	5.6 (4.13-7.24)	5.39 (3.93-7.03)
Lithuania	Male	75 (73.6-76.4)	1.82 (1.69-1.96)	1.08 (0.998-1.16)	4.74 (3.6-5.81)	6.56 (5.37-7.7)	5.82 (4.66-6.93)
Lithuania	Female	83.6 (82.2-85.1)	0.279 (0.249-0.309)	0.111 (0.0964-0.124)	3.96 (2.69-5.23)	4.24 (2.97-5.52)	4.07 (2.81-5.34)
Republic of Moldova	Male	76.6 (73-79.3)	2.67 (2.53-2.82)	1.6 (1.51-1.69)	6.12 (2.82-8.14)	8.8 (5.49-10.9)	7.72 (4.46-9.77)
Republic of Moldova	Female	84.9 (80.9-87.9)	0.218 (0.198-0.251)	0.0242 (0.0198-0.033)	6.08 (2.38-8.7)	6.3 (2.61-8.9)	6.1 (2.41-8.72)
Russian Federation	Male	75.1 (73.1-76.9)	1.98 (1.87-2.12)	1.04 (0.977-1.12)	6.94 (5.43-8.3)	8.92 (7.42-10.3)	7.98 (6.51-9.35)
Russian Federation	Female	82 (80-83.9)	0.242 (0.212-0.277)	0.0826 (0.0681-0.102)	4.97 (3.27-6.5)	5.21 (3.53-6.73)	5.05 (3.37-6.58)
Ukraine	Male	73.3 (68.2-78.3)	1.64 (1.46-1.8)	0.863 (0.785-0.936)	4.77 (2.04-7.2)	6.41 (3.67-8.93)	5.63 (2.91-8.11)
Ukraine	Female	81 (76.6-85.6)	0.168 (0.128-0.223)	0.0421 (0.0313-0.0597)	3.56 (0.723-6.28)	3.73 (0.916-6.42)	3.6 (0.775-6.32)
High-income	Male	81.5 (81.1-81.7)	1.05 (1.01-1.1)	0.524 (0.505-0.547)	2.64 (2.31-2.92)	3.69 (3.33-3.98)	3.17 (2.81-3.45)
High-income	Female	85.4 (85-85.8)	0.594 (0.573-0.614)	0.232 (0.224-0.239)	1.57 (1.17-1.91)	2.16 (1.75-2.51)	1.8 (1.4-2.14)
Australasia	Male	83.4 (83-83.7)	0.504 (0.481-0.529)	0.194 (0.184-0.204)	2.35 (1.98-2.62)	2.85 (2.47-3.13)	2.54 (2.17-2.82)
Australasia	Female	86.6 (86.2-87)	0.41 (0.39-0.434)	0.105 (0.1-0.111)	1.43 (0.974-1.75)	1.84 (1.38-2.17)	1.54 (1.08-1.86)
Australia	Male	83.5 (83.1-83.8)	0.434 (0.413-0.458)	0.133 (0.126-0.14)	2.3 (1.92-2.6)	2.74 (2.35-3.03)	2.43 (2.06-2.73)
Australia	Female	86.9 (86.4-87.3)	0.374 (0.353-0.398)	0.0856 (0.0806-0.0911)	1.42 (0.951-1.74)	1.79 (1.31-2.12)	1.5 (1.04-1.82)
New Zealand	Male	83 (82.6-83.4)	0.858 (0.813-0.906)	0.5 (0.474-0.527)	2.59 (2.21-2.91)	3.45 (3.05-3.78)	3.09 (2.7-3.42)
New Zealand	Female	85.4 (84.8-85.8)	0.593 (0.558-0.629)	0.205 (0.193-0.219)	1.5 (1-1.88)	2.1 (1.6-2.49)	1.71 (1.21-2.09)
High-income Asia Pacific	Male	84.5 (84.1-84.8)	1.05 (0.977-1.12)	0.422 (0.39-0.457)	2.63 (2.28-2.99)	3.68 (3.28-4.06)	3.05 (2.68-3.42)
High-income Asia Pacific	Female	89.3 (88.9-89.6)	0.299 (0.276-0.323)	0.0996 (0.09-0.112)	1.53 (1.18-1.91)	1.83 (1.45-2.22)	1.63 (1.27-2.01)
Brunei Darussalam	Male	78.1 (76.5-79.3)	1.26 (1.18-1.35)	0.849 (0.796-0.908)	3.13 (1.94-4)	4.39 (3.2-5.3)	3.97 (2.78-4.89)
Brunei Darussalam	Female	80.6 (79.1-82)	0.637 (0.581-0.697)	0.317 (0.289-0.35)	2.31 (1.07-3.12)	2.94 (1.72-3.79)	2.62 (1.39-3.46)
Japan	Male	84.3 (84-84.6)	0.938 (0.875-0.995)	0.291 (0.274-0.308)	2.13 (1.79-2.42)	3.06 (2.7-3.38)	2.42 (2.07-2.71)
Japan	Female	89.4 (89.1-89.7)	0.253 (0.238-0.271)	0.0316 (0.03-0.0333)	1.28 (0.965-1.59)	1.54 (1.21-1.84)	1.31 (0.996-1.62)
Republic of Korea	Male	84.5 (84.1-85)	1.3 (1.19-1.45)	0.701 (0.632-0.786)	4.17 (3.68-5.01)	5.48 (4.91-6.35)	4.87 (4.33-5.72)
Republic of Korea	Female	89 (88.5-89.5)	0.424 (0.373-0.487)	0.265 (0.229-0.308)	3.03 (2.5-3.91)	3.46 (2.89-4.35)	3.3 (2.74-4.19)
Singapore	Male	87 (86.4-87.6)	0.713 (0.677-0.758)	0.239 (0.228-0.253)	2.93 (2.3-3.47)	3.64 (3-4.2)	3.17 (2.54-3.72)
Singapore	Female	89.8 (89.1-90.4)	0.187 (0.166-0.21)	0.0374 (0.0306-0.0457)	1.82 (1.18-2.38)	2.01 (1.35-2.59)	1.86 (1.21-2.43)
High-income North America	Male	79.1 (78.5-79.5)	1.04 (0.996-1.09)	0.589 (0.562-0.617)	2.91 (2.4-3.36)	3.95 (3.43-4.44)	3.5 (2.98-3.97)
High-income North America	Female	83 (82.5-83.5)	0.848 (0.813-0.88)	0.341 (0.329-0.353)	1.77 (1.19-2.25)	2.62 (2.02-3.1)	2.11 (1.53-2.58)
Canada	Male	82.8 (82.3-83.2)	0.885 (0.835-0.94)	0.458 (0.432-0.485)	2.27 (1.84-2.65)	3.16 (2.7-3.54)	2.73 (2.28-3.12)
Canada	Female	85.9 (85.4-86.3)	0.675 (0.632-0.725)	0.22 (0.206-0.237)	1.31 (0.808-1.71)	1.98 (1.47-2.39)	1.53 (1.03-1.93)
Greenland	Male	76 (74.3-77.4)	1.94 (1.74-2.15)	1.08 (0.971-1.19)	4.45 (3.57-5.08)	6.39 (5.44-7.1)	5.53 (4.62-6.2)
Greenland	Female	81.8 (80.1-82.9)	1.82 (1.64-2.01)	0.993 (0.901-1.11)	6.45 (3.51-5.37)	6.45 (5.24-7.26)	5.63 (4.47-6.39)
United States of America	Male	78.6 (78-79.1)	1.06 (1.01-1.11)	0.604 (0.575-0.634)	2.91 (2.36-3.41)	3.98 (3.42-4.49)	3.52 (2.97-4.03)
United States of America	Female	82.7 (82.1-83.2)	0.868 (0.832-0.902)	0.356 (0.342-0.369)	1.77 (1.17-2.27)	2.64 (2.02-3.14)	2.13 (1.52-2.62)
Southern Latin America	Male	79.1 (78.5-79.7)	1.01 (0.963-1.06)	0.524 (0.497-0.552)	3.51 (2.96-3.99)	4.52 (3.95-5.04)	4.03 (3.47-4.53)
Southern Latin America	Female	83.3 (82.7-83.9)	0.578 (0.549-0.611)	0.281 (0.264-0.299)	2.28 (1.69-2.84)	2.86 (2.28-3.41)	2.56 (1.98-3.12)
Argentina	Male	77.9 (77.3-78.5)	1.18 (1.12-1.24)	0.643 (0.611-0.674)	3.09 (2.49-3.66)	4.27 (3.65-4.85)	3.73 (3.12-4.3)
Argentina	Female	82.3 (81.6-83)	0.716 (0.684-0.755)	0.361 (0.341-0.383)	2.01 (1.36-2.65)	2.72 (2.08-3.38)	2.37 (1.73-3.02)
Chile	Male	82.1 (81.6-82.7)	0.503 (0.48-0.528)	0.151 (0.142-0.161)	4.16 (3.6-4.66)	4.66 (4.11-5.18)	4.31 (3.76-4.81)
Chile	Female	85.6 (85.1-86.1)	0.267 (0.253-0.281)	0.0997 (0.0933-0.107)	2.68 (2.16-3.13)	2.95 (2.42-3.39)	2.78 (2.26-3.22)

Supplementary Results Table S3. Life expectancy at birth by location, sex, and scenario

Location	Sex	2050			Change between 2022 and 2050		
		Reference	Difference between		Reference	Elimination - 2023	Elimination - 2050
			Elimination-2023 and Reference	Elimination-2050 and Reference			
Uruguay	Male	76.7 (76.1-77.2)	1.44 (1.36-1.53)	0.844 (0.8-0.892)	3.27 (2.8-3.66)	4.71 (4.21-5.11)	4.12 (3.62-4.51)
Uruguay	Female	82.7 (82.1-83.2)	0.449 (0.426-0.472)	0.168 (0.159-0.179)	2.36 (1.84-2.79)	2.81 (2.38-3.25)	2.53 (2.01-2.96)
Western Europe	Male	82.7 (82.5-82.9)	1.08 (1.03-1.13)	0.522 (0.5-0.546)	2.64 (2.42-2.8)	3.72 (3.48-3.89)	3.16 (2.94-3.33)
Western Europe	Female	86.2 (85.9-86.5)	0.497 (0.476-0.52)	0.177 (0.17-0.185)	1.63 (1.35-1.86)	2.13 (1.84-2.37)	1.81 (1.52-2.05)
Andorra	Male	83.9 (81.1-87)	1.37 (1.2-1.54)	0.727 (0.655-0.811)	2.27 (1.8-2.66)	3.64 (3.13-4.04)	3 (2.52-3.37)
Andorra	Female	87.8 (85.6-90.1)	0.364 (0.31-0.423)	0.0947 (0.0743-0.118)	1.58 (0.736-2.28)	1.95 (1.06-2.64)	1.68 (0.823-2.37)
Austria	Male	83.4 (83-83.8)	1.04 (0.982-1.11)	0.437 (0.412-0.467)	3.14 (2.7-3.49)	4.18 (3.74-4.55)	3.58 (3.14-3.93)
Austria	Female	86.9 (86.5-87.4)	0.428 (0.4-0.462)	0.136 (0.126-0.148)	2.2 (1.76-2.61)	2.63 (2.19-3.04)	2.34 (1.9-2.75)
Belgium	Male	82.5 (82.1-82.9)	1.17 (1.08-1.25)	0.593 (0.551-0.637)	2.65 (2.3-2.96)	3.81 (3.45-4.13)	3.24 (2.88-3.56)
Belgium	Female	86 (85.5-86.4)	0.503 (0.469-0.542)	0.142 (0.133-0.155)	1.56 (1.1-1.96)	2.06 (1.6-2.46)	1.7 (1.24-2.1)
Cyprus	Male	82.6 (81.6-83.6)	1.22 (1.11-1.35)	0.647 (0.589-0.717)	3.04 (2.46-3.5)	4.26 (3.63-4.75)	3.69 (3.09-4.15)
Cyprus	Female	85.7 (84.9-86.3)	0.248 (0.222-0.275)	0.0586 (0.0521-0.0665)	2.22 (1.64-2.67)	2.47 (1.89-2.93)	2.28 (1.7-2.74)
Denmark	Male	82.3 (82-82.6)	1.23 (1.15-1.32)	0.804 (0.751-0.867)	3.02 (2.71-3.38)	4.25 (3.92-4.63)	3.83 (3.5-4.19)
Denmark	Female	84.8 (84.4-85.2)	1.02 (0.956-1.08)	0.49 (0.46-0.521)	1.62 (1.21-2.01)	2.63 (2.22-3.02)	2.11 (1.7-2.5)
Finland	Male	82.6 (82.2-83.1)	0.841 (0.794-0.899)	0.321 (0.304-0.342)	4.56 (3.91-5.26)	5.4 (4.74-6.12)	4.88 (4.23-5.59)
Finland	Female	86.6 (86.2-87.1)	0.325 (0.303-0.349)	0.0894 (0.0831-0.0964)	2.98 (2.37-3.63)	3.31 (2.7-3.97)	3.07 (2.46-3.73)
France	Male	82.6 (82.3-82.8)	1.19 (1.09-1.29)	0.545 (0.498-0.592)	2.31 (2.03-2.59)	3.49 (3.22-3.77)	2.85 (2.58-3.13)
France	Female	87.3 (87-87.6)	0.465 (0.423-0.514)	0.183 (0.164-0.204)	1.43 (1.13-1.7)	1.9 (1.58-2.18)	1.62 (1.31-1.89)
Germany	Male	81.7 (81.5-82)	1.08 (1.02-1.14)	0.477 (0.453-0.505)	2.5 (2.2-2.78)	3.58 (3.26-3.87)	2.98 (2.67-3.26)
Germany	Female	85.2 (84.9-85.5)	0.52 (0.49-0.553)	0.165 (0.155-0.177)	1.38 (1.07-1.65)	1.9 (1.58-2.17)	1.54 (1.23-1.82)
Greece	Male	81.3 (80.8-81.7)	2.03 (1.92-2.17)	1.15 (1.09-1.22)	3.6 (3.18-4.01)	5.64 (5.18-6.1)	4.76 (4.33-5.19)
Greece	Female	85.1 (84.8-85.4)	0.667 (0.631-0.711)	0.265 (0.251-0.284)	2.19 (1.84-2.55)	2.86 (2.5-3.24)	2.46 (2.1-2.83)
Iceland	Male	84.3 (83.6-85.1)	0.845 (0.787-0.914)	0.45 (0.42-0.485)	2.47 (2.01-2.95)	3.32 (2.84-3.79)	2.92 (2.46-3.4)
Iceland	Female	87.1 (86.4-87.8)	0.534 (0.494-0.584)	0.1 (0.0916-0.111)	2.4 (1.89-2.83)	2.94 (2.38-3.4)	2.5 (1.98-2.94)
Ireland	Male	85 (84.6-85.4)	0.86 (0.817-0.917)	0.417 (0.394-0.447)	3.44 (3.13-3.89)	4.3 (4-4.74)	3.86 (3.55-4.3)
Ireland	Female	87.1 (86.7-87.5)	0.645 (0.601-0.687)	0.205 (0.19-0.219)	2.14 (1.82-2.48)	2.79 (2.46-3.13)	2.35 (2.02-2.7)
Israel	Male	84.5 (83.5-85.2)	0.802 (0.734-0.88)	0.321 (0.295-0.351)	2.78 (1.73-3.73)	3.58 (2.52-4.58)	3.1 (2.04-4.07)
Israel	Female	87.3 (86.6-87.7)	0.287 (0.262-0.316)	0.0644 (0.0583-0.0716)	1.92 (1.28-2.43)	2.21 (1.54-2.73)	1.98 (1.34-2.49)
Italy	Male	83.5 (83.3-83.8)	1.01 (0.956-1.09)	0.5 (0.471-0.535)	2.76 (2.43-3.08)	3.77 (3.46-4.12)	3.26 (2.94-3.59)
Italy	Female	87 (86.6-87.2)	0.409 (0.383-0.438)	0.108 (0.1-0.117)	1.87 (1.5-2.2)	2.28 (1.91-2.62)	1.98 (1.61-2.31)
Luxembourg	Male	83.1 (82.2-83.8)	1.14 (1.06-1.22)	0.584 (0.545-0.626)	2.05 (1.64-2.4)	3.19 (2.76-3.51)	2.64 (2.21-2.95)
Luxembourg	Female	86.5 (85.7-87.2)	0.507 (0.471-0.546)	0.126 (0.115-0.137)	1.22 (0.622-1.62)	1.73 (1.09-2.13)	1.35 (0.74-1.75)
Malta	Male	84.5 (83.7-85.4)	0.98 (0.907-1.06)	0.391 (0.362-0.425)	3.81 (3.09-4.46)	4.79 (4.04-5.45)	4.2 (3.47-4.85)
Malta	Female	86.8 (85.9-87.6)	0.377 (0.349-0.415)	0.0944 (0.0867-0.103)	2.87 (2.21-3.45)	3.25 (2.57-3.84)	2.97 (2.3-3.55)
Monaco	Male	80 (78.6-81.1)	1.6 (1.41-1.82)	0.96 (0.843-1.09)	2.3 (1.96-2.65)	3.9 (3.53-4.29)	3.26 (2.92-3.64)
Monaco	Female	83.5 (81.9-85.2)	0.829 (0.707-0.957)	0.293 (0.243-0.347)	1.22 (0.823-1.56)	2.04 (1.66-2.38)	1.51 (1.13-1.86)
Netherlands	Male	82.7 (82.4-82.9)	0.99 (0.932-1.05)	0.571 (0.539-0.607)	1.94 (1.73-2.13)	2.93 (2.71-3.12)	2.51 (2.29-2.7)
Netherlands	Female	84.7 (84.4-85)	0.68 (0.636-0.729)	0.289 (0.27-0.31)	0.872 (0.593-1.1)	1.55 (1.27-1.78)	1.16 (0.876-1.39)
Norway	Male	83.8 (83.5-84)	0.346 (0.327-0.368)	0.0837 (0.0786-0.0894)	2.38 (2.08-3.22)	2.72 (2.43-3.58)	2.46 (2.16-3.31)
Norway	Female	85.9 (85.6-86.2)	0.183 (0.173-0.194)	0.027 (0.025-0.0291)	1.33 (1.01-2.06)	1.51 (1.19-2.24)	1.36 (1.04-2.08)
Portugal	Male	82.6 (82.3-82.9)	0.976 (0.92-1.04)	0.378 (0.355-0.401)	3.44 (3.09-3.83)	4.42 (4.04-4.81)	3.82 (3.46-4.22)
Portugal	Female	87.5 (87-87.9)	0.212 (0.199-0.228)	0.0848 (0.0795-0.0907)	2.69 (2.21-3.08)	2.91 (2.42-3.31)	2.78 (2.3-3.17)
San Marino	Male	87.9 (85-90.7)	1.09 (0.887-1.3)	0.608 (0.51-0.714)	3.14 (2.55-3.79)	4.23 (3.56-4.9)	3.75 (3.12-4.39)
San Marino	Female	90.1 (87.1-93.2)	0.309 (0.243-0.381)	0.0653 (0.0474-0.085)	1.89 (1.15-2.57)	2.2 (1.47-2.87)	1.96 (1.22-2.63)
Spain	Male	83.5 (83.2-83.7)	1.15 (1.09-1.22)	0.492 (0.465-0.521)	2.98 (2.68-3.25)	4.13 (3.79-4.41)	3.48 (3.16-3.75)
Spain	Female	87.7 (87.3-88.1)	0.215 (0.198-0.236)	0.0698 (0.0642-0.0767)	1.77 (1.37-2.19)	1.99 (1.58-2.41)	1.84 (1.44-2.26)
Sweden	Male	84.5 (83.4-85.6)	0.777 (0.72-0.854)	0.475 (0.439-0.518)	2.24 (1.93-2.53)	3.01 (2.71-3.32)	2.71 (2.4-3.01)
Sweden	Female	86.5 (85.6-87.4)	0.673 (0.618-0.724)	0.299 (0.274-0.325)	1.37 (0.997-1.71)	2.04 (1.64-2.4)	1.66 (1.28-2.02)
Switzerland	Male	85.3 (84.9-85.6)	0.961 (0.9-1.04)	0.51 (0.476-0.553)	2.13 (1.84-2.43)	3.09 (2.78-3.39)	2.64 (2.34-2.94)
Switzerland	Female	87.8 (87.5-88.1)	0.551 (0.515-0.589)	0.174 (0.162-0.189)	1.12 (0.822-1.37)	1.67 (1.35-1.93)	1.3 (0.983-1.55)

Supplementary Results Table S3. Life expectancy at birth by location, sex, and scenario

Location	Sex	2050			Change between 2022 and 2050		
		Reference	Difference between		Reference	Elimination - 2023	
			Elimination-2023 and Reference	Elimination-2050 and Reference		Elimination - 2050	
United Kingdom	Male	82.2 (81.9-82.5)	1.08 (1.03-1.13)	0.604 (0.577-0.632)	2.3 (1.98-2.56)	3.8 (3.06-3.64)	2.9 (2.59-3.16)
United Kingdom	Female	84.9 (84.6-85.3)	0.771 (0.731-0.812)	0.304 (0.289-0.319)	1.47 (1.12-1.78)	2.24 (1.89-2.56)	1.78 (1.42-2.09)
Latin America and Caribbean	Male	77.2 (74.8-78.8)	0.757 (0.724-0.792)	0.441 (0.421-0.46)	4.64 (2.41-6.14)	5.39 (3.14-6.91)	5.08 (2.84-6.59)
Latin America and Caribbean	Female	82.4 (79.8-84.5)	0.312 (0.296-0.331)	0.116 (0.108-0.129)	3.7 (1.22-5.68)	4.01 (1.54-5.99)	3.81 (1.35-5.79)
Andean Latin America	Male	79.6 (77.1-81.9)	0.505 (0.468-0.545)	0.283 (0.262-0.306)	5.63 (3.91-7.13)	6.14 (4.4-7.66)	5.92 (4.19-7.42)
Andean Latin America	Female	82.6 (80.2-84.7)	0.136 (0.123-0.149)	0.0451 (0.0399-0.0507)	4.56 (2.75-6)	4.69 (2.88-6.14)	4.6 (2.79-6.05)
Bolivia (Plurinational State of)	Male	76.1 (72.7-79.1)	0.788 (0.697-0.898)	0.514 (0.454-0.587)	9.02 (6.16-12)	9.8 (6.92-12.8)	9.53 (6.66-12.5)
Bolivia (Plurinational State of)	Female	77.4 (74.1-80.3)	0.182 (0.159-0.207)	0.101 (0.0851-0.118)	6.93 (4.43-9.34)	7.11 (4.59-9.53)	7.03 (4.52-9.44)
Ecuador	Male	78.6 (75.9-81.2)	0.512 (0.46-0.571)	0.262 (0.234-0.294)	3.82 (1.96-5.24)	4.33 (2.45-5.75)	4.08 (2.22-5.49)
Ecuador	Female	82.6 (80.3-84.8)	0.165 (0.147-0.183)	0.0495 (0.0434-0.0561)	2.99 (1.34-4.19)	3.15 (1.5-3.6)	3.04 (1.39-4.24)
Peru	Male	81.3 (78.4-84.1)	0.397 (0.356-0.445)	0.203 (0.183-0.225)	5.08 (3.45-6.4)	5.48 (3.82-6.82)	5.29 (3.65-6.61)
Peru	Female	84.4 (81.8-86.9)	0.1 (0.0895-0.113)	0.0194 (0.0173-0.0217)	4.19 (2.45-5.59)	4.29 (2.55-5.69)	4.21 (2.47-5.61)
Caribbean	Male	74.5 (59.9-77.5)	1.03 (0.667-1.11)	0.62 (0.405-0.666)	4.72 (-11.4-18.7)	5.76 (-10.8-19.8)	5.34 (-11-19.3)
Caribbean	Female	78.8 (68.2-82.1)	0.457 (0.341-0.493)	0.208 (0.155-0.228)	4.13 (-7.52-14.7)	4.58 (-7.18-15.1)	4.34 (-7.37-14.9)
Antigua and Barbuda	Male	77.8 (76.3-78.9)	0.681 (0.626-0.739)	0.416 (0.383-0.451)	3.26 (1.63-4.29)	3.94 (2.31-5.02)	3.68 (2.05-4.73)
Antigua and Barbuda	Female	80.2 (78.6-81.4)	0.283 (0.267-0.301)	0.111 (0.104-0.119)	2.22 (0.541-3.34)	2.5 (0.807-3.63)	2.33 (0.647-3.45)
Bahamas	Male	74.3 (71.2-77.1)	0.789 (0.734-0.842)	0.518 (0.481-0.553)	3.82 (2.46-5.29)	4.61 (3.24-6.11)	4.34 (2.98-5.83)
Bahamas	Female	80.1 (77.4-82.6)	0.222 (0.208-0.237)	0.102 (0.0955-0.109)	3.04 (1.43-4.28)	3.26 (1.65-4.51)	3.14 (1.53-4.39)
Barbados	Male	78.5 (75.7-81.2)	0.575 (0.523-0.626)	0.291 (0.263-0.318)	4.61 (2.79-5.96)	4.9 (3.31-6.55)	4.9 (3.05-6.26)
Barbados	Female	80 (77.3-82.2)	0.0857 (0.0749-0.0986)	0.0154 (0.0136-0.0182)	2.73 (0.966-3.96)	2.82 (1.06-4.05)	2.75 (0.984-3.98)
Belize	Male	76.2 (73.4-78.6)	1.09 (1.03-1.16)	0.702 (0.663-0.744)	4.3 (1.3-7.43)	5.39 (2.35-8.54)	5.01 (1.98-8.15)
Belize	Female	81.5 (78.5-84.1)	0.274 (0.26-0.29)	0.118 (0.11-0.129)	4.51 (1.26-7.3)	4.78 (1.53-7.57)	4.63 (1.38-7.42)
Bermuda	Male	81.4 (79.6-82.7)	0.979 (0.888-1.09)	0.587 (0.533-0.649)	3.84 (3.1-4.52)	4.82 (4.06-5.54)	4.42 (3.69-5.13)
Bermuda	Female	88.4 (86.4-89.8)	0.388 (0.341-0.441)	0.156 (0.137-0.178)	3.35 (2.46-4.09)	3.74 (2.82-4.49)	3.51 (2.61-4.25)
Cuba	Male	78.5 (76.7-80.2)	1.57 (1.45-1.7)	0.884 (0.813-0.955)	2.35 (1.29-3.05)	3.92 (2.79-4.64)	3.23 (2.15-3.93)
Cuba	Female	83.7 (81.9-85.1)	0.625 (0.573-0.677)	0.205 (0.185-0.227)	2.54 (1.27-3.45)	3.16 (1.87-4.09)	2.74 (1.47-3.66)
Dominica	Male	73.1 (70.3-75.4)	0.77 (0.698-0.852)	0.458 (0.416-0.505)	4.55 (2.55-6.18)	5.32 (3.25-7.01)	5 (2.97-6.68)
Dominica	Female	77.7 (74.8-79.9)	0.218 (0.199-0.241)	0.0526 (0.0476-0.0578)	3.84 (1.65-5.58)	4.06 (1.85-5.82)	3.89 (1.7-5.63)
Dominican Republic	Male	76.9 (73.3-79.8)	1.21 (1.11-1.33)	0.909 (0.837-0.996)	4.37 (1.9-5.99)	5.58 (3.07-7.24)	5.28 (2.77-6.93)
Dominican Republic	Female	82.5 (79.1-85.2)	0.804 (0.725-0.893)	0.53 (0.474-0.596)	3.83 (1.38-5.62)	4.63 (2.13-6.52)	4.36 (1.86-6.22)
Grenada	Male	73.9 (71.5-75.7)	0.658 (0.617-0.704)	0.361 (0.333-0.394)	3.58 (1.74-4.77)	4.23 (2.4-5.43)	3.94 (2.11-5.13)
Grenada	Female	78.5 (76-80.5)	0.227 (0.215-0.241)	0.0799 (0.0747-0.0868)	3.35 (1.25-4.76)	3.58 (1.48-4.99)	3.43 (1.33-4.84)
Guyana	Male	70.9 (66.8-75)	0.825 (0.748-0.901)	0.458 (0.406-0.517)	6.86 (4.35-10.2)	7.69 (5.24-11)	7.32 (4.86-10.6)
Guyana	Female	77.8 (74.3-81)	0.225 (0.203-0.247)	0.107 (0.0947-0.12)	6.9 (4.43-10)	7.13 (4.66-10.2)	7.01 (4.54-10.1)
Haiti	Male	69.5 (40.8-74.9)	0.49 (0.134-0.577)	0.272 (0.077-0.329)	7.71 (-21.4-36)	8.2 (-21.3-36.5)	7.98 (-21.3-36.2)
Haiti	Female	71 (50.1-76.8)	0.2 (0.0892-0.24)	0.105 (0.0473-0.126)	7.69 (-13.6-29.2)	7.89 (-13.5-29.5)	7.8 (-13.6-29.4)
Jamaica	Male	78 (74.8-81.4)	0.94 (0.861-1.03)	0.469 (0.429-0.511)	4.14 (2.58-5.73)	5.08 (3.49-6.68)	4.61 (3.05-6.21)
Jamaica	Female	81.4 (78-84.7)	0.323 (0.298-0.35)	0.0777 (0.0702-0.0862)	3.85 (1.45-5.57)	4.17 (1.76-5.89)	3.93 (1.53-5.65)
Puerto Rico	Male	81.4 (78.9-83.7)	0.885 (0.81-0.959)	0.484 (0.444-0.521)	4.61 (3.33-5.73)	5.49 (4.17-6.65)	5.09 (3.79-6.23)
Puerto Rico	Female	87.4 (85.4-89.3)	0.39 (0.362-0.419)	0.0884 (0.0812-0.0968)	3.03 (1.55-4.33)	3.42 (1.92-4.74)	3.11 (1.64-4.42)
Saint Kitts and Nevis	Male	74.8 (72.7-76.7)	0.464 (0.429-0.51)	0.232 (0.216-0.253)	4.96 (3.32-6.3)	5.42 (3.79-6.78)	5.19 (3.55-6.54)
Saint Kitts and Nevis	Female	80.5 (78.1-82.7)	0.172 (0.158-0.187)	0.0711 (0.0649-0.0781)	4.02 (2.04-5.59)	4.19 (2.2-5.77)	4.09 (2.11-5.66)
Saint Lucia	Male	76.4 (73.5-78.9)	0.708 (0.647-0.771)	0.351 (0.32-0.383)	4.73 (2.47-6.78)	5.44 (3.2-7.45)	5.08 (2.83-7.11)
Saint Lucia	Female	82.5 (79.6-85)	0.214 (0.196-0.233)	0.0718 (0.0657-0.0785)	4.52 (2.12-6.44)	4.73 (2.33-6.67)	4.59 (2.19-6.52)
Saint Vincent and the Grenadines	Male	74 (72-75.7)	0.687 (0.633-0.741)	0.383 (0.345-0.423)	3.88 (2.18-5.14)	4.56 (2.9-5.81)	4.26 (2.59-5.5)
Saint Vincent and the Grenadines	Female	79.3 (76.9-81.3)	0.192 (0.181-0.206)	0.0842 (0.0795-0.09)	3.93 (1.69-5.4)	4.12 (1.89-5.59)	4.01 (1.78-5.48)
Suriname	Male	75.5 (70.9-79.8)	1.1 (1.03-1.18)	0.525 (0.479-0.58)	5.44 (2.33-7.96)	6.54 (3.39-9.11)	5.96 (2.85-8.5)
Suriname	Female	80.9 (76.8-84.2)	0.373 (0.347-0.405)	0.102 (0.091-0.117)	4.82 (1.79-7.32)	5.2 (2.15-7.68)	4.92 (1.89-7.41)
Trinidad and Tobago	Male	76 (72.5-79.5)	0.951 (0.856-1.04)	0.519 (0.453-0.586)	6.62 (4.67-8.82)	7.57 (5.67-9.75)	7.14 (5.24-9.32)
Trinidad and Tobago	Female	82.8 (79.7-85.9)	0.277 (0.253-0.304)	0.0721 (0.0632-0.0816)	6.48 (4.37-8.76)	6.76 (4.66-9.05)	6.55 (4.45-8.83)

Supplementary Results Table S3. Life expectancy at birth by location, sex, and scenario

Location	Sex	2050			Change between 2022 and 2050		
		Reference	Difference between		Reference	Elimination - 2023	
			Elimination-2023 and Reference	Elimination-2050 and Reference		Elimination - 2050	
United States Virgin Islands	Male	77.2 (74.6-79.6)	0.615 (0.553-0.698)	0.395 (0.355-0.446)	6.3 (4.45-9.14)	6.92 (5.05-9.78)	6.7 (4.84-9.55)
United States Virgin Islands	Female	86 (84-87.8)	0.278 (0.243-0.317)	0.0819 (0.0701-0.0959)	4.59 (2.62-7.29)	4.87 (2.88-7.58)	4.67 (2.7-7.38)
Central Latin America	Male	76.8 (73.7-79.1)	0.613 (0.585-0.642)	0.3 (0.283-0.321)	4.7 (2.03-6.24)	5.32 (2.63-6.86)	5 (2.34-6.54)
Central Latin America	Female	82.1 (78.9-84.8)	0.214 (0.198-0.238)	0.0459 (0.0388-0.0608)	3.55 (0.609-5.71)	3.76 (0.844-5.9)	3.59 (0.667-5.75)
Colombia	Male	82.1 (79.5-84.2)	0.497 (0.457-0.543)	0.145 (0.134-0.158)	5.33 (3.78-6.4)	5.83 (4.24-6.92)	5.48 (3.92-6.55)
Colombia	Female	86.8 (84.2-89)	0.193 (0.177-0.211)	0.0354 (0.0309-0.0406)	3.85 (1.71-5.33)	4.05 (1.9-5.53)	3.89 (1.74-5.37)
Costa Rica	Male	80.4 (78.5-82)	0.738 (0.681-0.795)	0.418 (0.386-0.451)	3.8 (2.36-4.78)	4.54 (3.05-5.52)	4.22 (2.75-5.19)
Costa Rica	Female	86.2 (84.5-87.7)	0.251 (0.238-0.265)	0.0403 (0.0382-0.0427)	3.26 (1.65-4.42)	3.51 (1.9-4.67)	3.3 (1.69-4.46)
El Salvador	Male	75.3 (72.1-78.3)	0.635 (0.574-0.701)	0.338 (0.298-0.385)	5.15 (3.07-6.72)	5.79 (3.72-7.33)	5.49 (3.43-7.03)
El Salvador	Female	82.5 (79.4-85.6)	0.241 (0.216-0.265)	0.104 (0.09-0.118)	3.52 (0.991-5.66)	3.76 (1.22-5.92)	3.62 (1.09-5.77)
Guatemala	Male	76.7 (74-79)	0.55 (0.512-0.595)	0.309 (0.286-0.336)	5.77 (3.66-7.28)	6.32 (4.22-7.86)	6.08 (3.98-7.6)
Guatemala	Female	81.4 (78.7-83.8)	0.182 (0.17-0.195)	0.0691 (0.0637-0.0751)	5.45 (2.88-7.55)	5.63 (3.06-7.74)	5.2 (2.95-7.62)
Honduras	Male	74.9 (70.5-77.1)	0.975 (0.826-1.12)	0.636 (0.541-0.729)	6 (0.328-9.96)	6 (1.15-11)	5.66 (0.862-10.6)
Honduras	Female	77.2 (73.5-79.9)	0.327 (0.278-0.383)	0.119 (0.0982-0.144)	4.39 (0.809-7.54)	4.72 (1.11-7.86)	4.51 (0.916-7.66)
Mexico	Male	75.8 (73.2-78.3)	0.582 (0.54-0.626)	0.277 (0.258-0.296)	4.56 (2.63-5.93)	5.14 (3.21-6.56)	4.83 (2.92-6.23)
Mexico	Female	81.2 (78.8-83.5)	0.186 (0.173-0.199)	0.0244 (0.0218-0.0266)	3.6 (1.61-5.27)	3.79 (1.78-5.47)	3.63 (1.63-5.3)
Nicaragua	Male	79.7 (75.9-82.6)	0.716 (0.598-0.801)	0.464 (0.387-0.527)	2.62 (-0.74-5.16)	3.34 (-0.0674-5.95)	3.09 (-0.333-5.68)
Nicaragua	Female	84 (81.1-86.5)	0.116 (0.1-0.136)	0.0305 (0.0258-0.0369)	2 (-0.609-4.26)	2.11 (-0.479-4.37)	2.03 (-0.573-4.29)
Panama	Male	81.5 (78.9-84.1)	0.537 (0.487-0.59)	0.208 (0.191-0.228)	4.61 (3.12-5.77)	5.15 (3.61-6.33)	4.82 (3.31-5.99)
Panama	Female	85.8 (83.4-88.3)	0.272 (0.254-0.291)	0.0985 (0.0921-0.106)	3.49 (1.75-4.94)	3.76 (2.01-5.22)	3.58 (1.85-5.04)
Venezuela (Bolivarian Republic of)	Male	70.3 (58.4-77.5)	0.874 (0.78-1.03)	0.497 (0.429-0.634)	2.52 (-7.89-8.01)	3.4 (-6.87-8.86)	3.02 (-7.27-8.47)
Venezuela (Bolivarian Republic of)	Female	78.1 (65.5-85.9)	0.366 (0.27-0.562)	0.119 (0.0719-0.225)	1.46 (-9.22-8.31)	1.83 (-8.7-8.63)	1.58 (-9.02-8.4)
Tropical Latin America	Male	77.5 (75.6-78.6)	0.915 (0.866-0.961)	0.59 (0.559-0.62)	4.18 (2.27-5.09)	5.1 (3.16-6.01)	4.77 (2.85-5.69)
Tropical Latin America	Female	83.3 (81.2-84.8)	0.437 (0.417-0.459)	0.194 (0.184-0.21)	3.49 (1.41-4.9)	3.92 (1.86-5.34)	3.68 (1.62-5.09)
Brazil	Male	77.5 (75.6-78.6)	0.906 (0.858-0.951)	0.583 (0.552-0.613)	4.2 (2.31-5.1)	5.1 (3.19-6.02)	4.78 (2.88-5.7)
Brazil	Female	83.3 (81.2-84.8)	0.433 (0.413-0.456)	0.191 (0.18-0.208)	3.48 (1.42-4.91)	3.91 (1.86-5.34)	3.67 (1.62-5.09)
Paraguay	Male	76 (72.3-79.1)	1.21 (1.09-1.34)	0.807 (0.727-0.893)	3.62 (1.31-5.02)	4.83 (2.4-6.27)	4.42 (2.03-5.85)
Paraguay	Female	82.3 (78.9-85.3)	0.637 (0.577-0.697)	0.341 (0.306-0.374)	3.82 (1.37-5.48)	4.45 (1.96-6.11)	4.16 (1.68-5.82)
North Africa and Middle East	Male	77.2 (74.3-79.5)	1.71 (1.62-1.8)	1.13 (1.06-1.2)	5.03 (2.31-7.1)	6.74 (4.03-8.89)	6.16 (3.44-8.28)
North Africa and Middle East	Female	79.7 (76.8-82)	0.206 (0.186-0.234)	0.0756 (0.0679-0.0879)	4.19 (1.4-6.34)	4.4 (1.63-6.54)	4.27 (1.49-6.41)
North Africa and Middle East	Male	77.2 (74.3-79.5)	1.71 (1.62-1.8)	1.13 (1.06-1.2)	5.03 (2.31-7.1)	6.74 (4.03-8.89)	6.16 (3.44-8.28)
North Africa and Middle East	Female	79.7 (76.8-82)	0.206 (0.186-0.234)	0.0756 (0.0679-0.0879)	4.19 (1.4-6.34)	4.4 (1.63-6.54)	4.27 (1.49-6.41)
Afghanistan	Male	72.5 (68.2-76.7)	1.4 (1.2-1.58)	1 (0.87-1.12)	9.78 (5.73-13.5)	11.2 (7.15-14.9)	10.8 (6.73-14.5)
Afghanistan	Female	72 (67.5-76.3)	0.242 (0.196-0.306)	0.0957 (0.0748-0.125)	8.82 (4.63-12.6)	9.07 (4.88-12.8)	8.92 (4.73-12.7)
Algeria	Male	81.4 (78.6-83.8)	1.44 (1.26-1.62)	1.08 (0.948-1.23)	4.5 (2-6.48)	5.94 (3.35-7.97)	5.58 (2.99-7.63)
Algeria	Female	81.6 (79.3-83.5)	0.0908 (0.0779-0.105)	0.034 (0.0281-0.04)	3.79 (1.68-5.59)	3.89 (1.78-5.68)	3.83 (1.72-5.63)
Bahrain	Male	78.9 (76.9-80.5)	1.55 (1.36-1.79)	1.17 (1.02-1.37)	3.54 (1.92-4.83)	5.09 (3.3-6.58)	4.72 (2.96-6.16)
Bahrain	Female	80.1 (77.9-81.9)	0.334 (0.302-0.374)	0.122 (0.109-0.14)	3.24 (1.29-4.62)	3.57 (1.61-4.97)	3.36 (1.4-4.75)
Egypt	Male	73.8 (70.2-76.9)	2.9 (2.71-3.06)	2.1 (1.96-2.23)	4.06 (1.01-6.41)	6.96 (3.89-9.35)	6.16 (3.1-8.52)
Egypt	Female	75.5 (73-77.7)	0.066 (0.0584-0.0732)	0.031 (0.0275-0.0323)	4.12 (1.79-5.85)	4.18 (1.86-5.91)	4.15 (1.82-5.88)
Iran (Islamic Republic of)	Male	82.1 (79.1-84.1)	1.41 (1.31-1.51)	0.863 (0.802-0.921)	4.72 (1.82-6.86)	6.13 (3.19-8.35)	5.59 (2.66-7.77)
Iran (Islamic Republic of)	Female	84.5 (82-86.4)	0.19 (0.175-0.21)	0.0596 (0.0544-0.067)	4.07 (1.59-5.94)	4.26 (1.8-6.12)	4.13 (1.66-6)
Iraq	Male	74.9 (70.8-78.9)	1.86 (1.59-2.13)	1.35 (1.14-1.56)	5.87 (1.56-9.67)	7.72 (3.15-11.6)	7.22 (2.7-11.1)
Iraq	Female	80.7 (76.7-84)	0.34 (0.286-0.393)	0.207 (0.17-0.243)	5.96 (2.24-8.95)	6.3 (2.58-9.27)	6.17 (2.45-9.14)
Jordan	Male	84.3 (81.3-86.6)	2.17 (1.95-2.45)	1.47 (1.31-1.65)	5.4 (3.29-7.24)	7.58 (5.3-9.5)	6.87 (4.67-8.77)
Jordan	Female	84.9 (82.3-87)	0.393 (0.353-0.435)	0.189 (0.164-0.221)	4.92 (3.01-6.57)	5.31 (3.4-6.97)	5.11 (3.19-6.78)
Kuwait	Male	82.8 (80.3-84.9)	1.25 (1.13-1.38)	0.711 (0.645-0.793)	2.61 (0.599-4.1)	3.86 (1.77-5.4)	3.32 (1.26-4.84)
Kuwait	Female	89.4 (87.1-91.1)	0.167 (0.145-0.194)	0.0528 (0.0391-0.0673)	2.4 (0.571-3.81)	2.57 (0.736-3.99)	2.45 (0.619-3.87)
Lebanon	Male	79.9 (77.6-81.8)	2.39 (2.16-2.68)	1.68 (1.52-1.88)	4.2 (2.19-6.23)	6 (4.44-8.64)	5.89 (3.77-7.93)
Lebanon	Female	84.5 (82.2-86.4)	1.2 (1.08-1.35)	0.682 (0.612-0.772)	3.55 (1.47-5.39)	4.75 (2.68-6.64)	4.23 (2.14-6.12)

Supplementary Results Table S3. Life expectancy at birth by location, sex, and scenario

Location	Sex	2050			Change between 2022 and 2050		
		Reference	Difference between		Reference	Elimination - 2023	Elimination - 2050
			Elimination-2023 and Reference	Elimination-2050 and Reference			
Libya	Male	74.1 (69.8–77.9)	2.3 (2.01–2.63)	1.52 (1.33–1.72)	4.36 (0.365–7.98)	6.66 (2.48–10.4)	5.88 (1.78–9.56)
	Female	77.8 (73.5–81.6)	0.0653 (0.0564–0.0745)	0.0164 (0.0144–0.0184)	3.83 (0.352–6.62)	3.89 (0.419–6.68)	3.84 (0.368–6.64)
Morocco	Male	77.6 (73.9–81.1)	0.987 (0.851–1.13)	0.496 (0.42–0.588)	5.51 (2.07–8.37)	6.49 (3.08–9.31)	6 (2.6–8.84)
	Female	79.6 (75.5–83.3)	0.0708 (0.0545–0.0915)	0.0113 (0.00921–0.0144)	5.09 (1.26–8.15)	5.16 (1.36–8.2)	5.1 (1.28–8.16)
Oman	Male	77.8 (74.6–80.5)	0.568 (0.518–0.617)	0.304 (0.281–0.331)	3.17 (0.408–5.21)	3.74 (0.97–5.79)	3.47 (0.702–5.53)
	Female	83.1 (79.2–86.5)	0.104 (0.0936–0.115)	0.0425 (0.0387–0.0468)	3.32 (-0.145–6.07)	3.43 (-0.0344–6.17)	3.36 (-0.102–6.12)
Palestine	Male	77.2 (72.7–79.7)	1.65 (1.45–1.82)	1.06 (0.936–1.17)	5.02 (0.538–9.64)	6.67 (1.96–11.3)	6.08 (1.45–10.7)
	Female	80.6 (77.7–82.7)	0.187 (0.172–0.202)	0.0542 (0.0473–0.0641)	4.1 (1.15–6.66)	4.28 (1.33–6.85)	4.15 (1.2–6.72)
Qatar	Male	81.1 (78.9–83.3)	0.782 (0.683–0.905)	0.389 (0.337–0.447)	3.26 (1.54–4.69)	4.04 (2.27–5.53)	3.65 (1.9–5.11)
	Female	81.5 (79.3–83.5)	0.0472 (0.0425–0.0533)	0.012 (0.00843–0.0165)	1.42 (-0.287–2.83)	1.47 (-0.241–2.88)	1.44 (-0.278–2.85)
Saudi Arabia	Male	75.5 (71.7–78.5)	1.18 (1.03–1.37)	0.678 (0.57–0.814)	2.49 (-0.82–4.88)	3.67 (0.476–5.97)	3.17 (-0.0102–5.48)
	Female	78.7 (74.9–81.6)	0.142 (0.119–0.177)	0.05 (0.0397–0.0647)	2.84 (-0.0445–5.13)	2.98 (0.113–5.27)	2.89 (0.0124–5.18)
Sudan	Male	74.3 (66.4–79.4)	1.21 (0.701–1.45)	0.699 (0.382–0.829)	5.84 (-1.38–10.1)	7.05 (-0.585–11.3)	6.54 (-0.926–10.8)
	Female	76.7 (67.8–82.5)	0.152 (0.089–0.193)	0.0249 (0.0132–0.031)	5.42 (-2.91–10.4)	5.57 (-2.79–10.5)	5.44 (-2.89–10.4)
Syrian Arab Republic	Male	72 (62.4–79.6)	1.49 (0.957–1.96)	0.846 (0.552–1.13)	4.05 (-9–17.4)	5.54 (-7.74–19.1)	4.89 (-8.28–18.3)
	Female	76.8 (70.8–81.5)	0.207 (0.146–0.283)	0.0364 (0.0253–0.0519)	3.25 (-3.71–10.2)	3.45 (-3.53–10.4)	3.28 (-3.68–10.3)
Tunisia	Male	79.5 (76.1–82.7)	1.87 (1.6–2.15)	1.27 (1.09–1.45)	5.49 (3.41–7.36)	7.37 (5.19–9.28)	6.76 (4.64–8.7)
	Female	84.2 (81–87.2)	0.136 (0.117–0.157)	0.0334 (0.029–0.0391)	4.94 (2.57–7)	5.07 (2.72–7.13)	4.97 (2.61–7.03)
Turkey	Male	79.6 (77.6–81.7)	1.76 (1.56–1.99)	0.948 (0.841–1.05)	4.61 (3.43–5.56)	6.37 (5.06–7.44)	5.55 (4.29–6.58)
	Female	83.5 (81.5–85.3)	0.285 (0.255–0.32)	0.0774 (0.067–0.0899)	3.39 (1.94–4.52)	3.68 (2.24–4.82)	3.47 (2.02–4.6)
United Arab Emirates	Male	81.8 (79.6–84)	0.963 (0.881–1.05)	0.648 (0.584–0.715)	2.83 (1.04–4.17)	3.79 (1.91–5.19)	3.47 (1.61–4.87)
	Female	73.6 (72.3–74.8)	0.122 (0.111–0.136)	0.0126 (0.0109–0.0148)	1.72 (0.533–2.55)	1.84 (0.667–2.68)	1.73 (0.547–2.57)
Yemen	Male	72.9 (67.6–77.5)	1.99 (1.67–2.26)	1.41 (1.19–1.6)	6.52 (2.1–11.1)	8.51 (4.21–13)	7.93 (3.6–12.4)
	Female	77 (71.7–82)	0.648 (0.511–0.826)	0.273 (0.217–0.361)	6.79 (1.9–11.3)	7.44 (2.65–11.9)	7.06 (2.22–11.6)
South Asia	Male	76.4 (72.5–79.5)	1.23 (1.13–1.32)	0.797 (0.736–0.851)	6.93 (3.56–9.76)	8.15 (4.83–11)	7.72 (4.37–10.6)
	Female	79.5 (75.7–82.8)	0.301 (0.26–0.345)	0.157 (0.135–0.18)	6.74 (3.2–9.69)	7.05 (3.52–9.99)	6.9 (3.35–9.86)
Bangladesh	Male	76.4 (74.9–82.4)	1.23 (1.13–1.32)	0.797 (0.736–0.851)	6.93 (3.56–9.76)	8.15 (4.83–11)	7.72 (4.37–10.6)
	Female	79.5 (75.7–82.8)	0.301 (0.26–0.345)	0.157 (0.135–0.18)	6.74 (3.2–9.69)	7.05 (3.52–9.99)	6.9 (3.35–9.86)
Bhutan	Male	79.3 (74.9–82.4)	1.96 (1.71–2.23)	1.43 (1.26–1.64)	6.25 (2.89–9.19)	8.21 (4.92–11.1)	7.69 (4.38–10.6)
	Female	81.7 (77.4–84.8)	0.235 (0.196–0.285)	0.116 (0.0952–0.14)	6.1 (2.7–8.99)	6.33 (2.97–9.22)	6.21 (2.84–9.11)
India	Male	78.5 (74.4–81.7)	1.07 (0.909–1.23)	0.784 (0.653–0.92)	7.03 (3.56–10.1)	8.09 (4.62–11.2)	7.81 (4.3–10.9)
	Female	80.9 (77–84)	0.257 (0.21–0.335)	0.0699 (0.0576–0.0926)	6.76 (3.48–9.55)	7.02 (3.74–9.79)	6.83 (3.55–9.63)
Nepal	Male	76.3 (72.3–79.6)	1.14 (1.05–1.25)	0.72 (0.658–0.783)	6.78 (3.33–9.42)	7.93 (4.52–10.6)	7.5 (4.06–10.2)
	Female	79.9 (76.2–83.4)	0.314 (0.263–0.36)	0.171 (0.143–0.198)	6.65 (3.07–9.7)	6.97 (3.4–10)	6.82 (3.24–9.88)
Pakistan	Male	77.2 (73.1–80.4)	1.25 (1.11–1.38)	0.866 (0.768–0.96)	7.08 (3.8–9.74)	8.33 (5.1–11)	7.94 (4.66–10.6)
	Female	80.7 (76.9–83.9)	0.513 (0.42–0.609)	0.276 (0.226–0.327)	7.24 (3.98–9.91)	7.75 (4.56–10.4)	7.52 (4.27–10.2)
Southeast Asia, East Asia, and Oceania	Male	75.3 (70.6–79.6)	1.27 (1.1–1.43)	0.869 (0.754–0.969)	8.01 (4.23–10.9)	9.28 (5.46–12.1)	8.87 (5.04–11.7)
	Female	75.9 (71.3–79.5)	0.197 (0.162–0.242)	0.047 (0.0357–0.0637)	7.45 (3.66–10.3)	7.65 (3.87–10.5)	7.5 (3.71–10.4)
East Asia	Male	77.2 (75–78.9)	2.35 (2.19–2.5)	1.57 (1.46–1.68)	3.82 (2.39–4.94)	6.16 (4.62–7.38)	5.39 (3.88–6.57)
	Female	82.9 (80.9–84.7)	0.61 (0.559–0.671)	0.383 (0.34–0.437)	3.7 (1.9–5.07)	4.31 (2.48–5.69)	4.08 (2.25–5.46)
China	Male	78.7 (76.3–80.8)	2.56 (2.34–2.79)	1.75 (1.61–1.91)	3.53 (2.32–4.38)	6.08 (4.75–7.09)	5.28 (3.97–6.24)
	Female	84.7 (82.5–86.7)	0.741 (0.673–0.822)	0.492 (0.435–0.561)	3.63 (2.06–4.83)	4.37 (2.75–5.63)	4.12 (2.51–5.38)
Democratic People's Republic of Korea	Male	78.8 (76.3–80.9)	2.57 (2.34–2.8)	1.76 (1.61–1.93)	3.54 (2.36–4.37)	6.1 (4.78–7.11)	5.3 (4.01–6.25)
	Female	84.7 (82.5–86.8)	0.756 (0.685–0.842)	0.506 (0.447–0.577)	3.67 (2.1–4.87)	4.42 (2.81–5.69)	4.17 (2.57–5.44)
Taiwan (Province of China)	Male	74.8 (71.1–77.7)	2.61 (2.35–2.87)	1.66 (1.48–1.83)	4.51 (1.76–6.68)	7.12 (4.4–9.36)	6.16 (3.44–8.39)
	Female	79.6 (75.6–82.6)	0.542 (0.458–0.636)	0.207 (0.178–0.24)	3.35 (0.564–5.52)	3.89 (1.13–6.06)	3.56 (0.782–5.73)
Oceania	Male	80.4 (79.6–81.2)	1.69 (1.59–1.78)	1.03 (0.973–1.09)	2.38 (1.82–3.04)	4.07 (3.43–4.76)	3.42 (2.81–4.09)
	Female	86.5 (85.7–87.2)	0.072 (0.0656–0.0796)	0.00691 (0.00627–0.00768)	1.89 (1.24–2.55)	1.96 (1.31–2.62)	1.9 (1.25–2.56)
Oceania	Male	71.5 (67.1–74.9)	1.46 (1.27–1.66)	0.738 (0.63–0.867)	6.66 (2.6–9.91)	8.13 (4.17–11.4)	7.4 (3.4–10.7)
	Female	74 (69.3–77.7)	0.733 (0.61–0.876)	0.307 (0.247–0.385)	6.12 (1.71–10.2)	6.86 (2.6–10.8)	6.43 (2.1–10.5)

Supplementary Results Table S3. Life expectancy at birth by location, sex, and scenario

Location	Sex	2050			Change between 2022 and 2050		
		Reference	Difference between		Reference	Elimination - 2023	Elimination - 2050
			Elimination-2023 and Reference	Elimination-2050 and Reference			
American Samoa	Male	72.4 (69.4-74.7)	1.73 (1.6-1.88)	1.06 (0.96-1.18)	3 (0.768-4.77)	4.73 (2.51-6.49)	4.06 (1.89-5.8)
American Samoa	Female	75.1 (71.8-77.8)	0.633 (0.55-0.735)	0.296 (0.246-0.361)	2.21 (-0.255-4.25)	2.85 (0.398-4.88)	2.51 (0.0611-4.53)
Cook Islands	Male	75.6 (73.1-77.8)	1.34 (1.21-1.46)	0.709 (0.631-0.792)	2.49 (0.496-3.95)	3.84 (1.85-5.34)	3.2 (1.23-4.71)
Cook Islands	Female	83 (80.5-85.3)	0.242 (0.205-0.289)	0.0599 (0.0475-0.0778)	3.12 (1.11-4.63)	3.36 (1.38-4.87)	3.17 (1.18-4.69)
Fiji	Male	70.9 (66.9-74.6)	1.5 (1.3-1.71)	0.957 (0.801-1.13)	4.87 (2.11-7.21)	6.38 (3.69-8.66)	5.83 (3.14-8.11)
Fiji	Female	75.4 (71.1-78.9)	0.428 (0.355-0.512)	0.217 (0.171-0.275)	4.97 (1.72-7.52)	5.39 (2.2-7.92)	5.18 (1.97-7.71)
Guam	Male	80.6 (77.8-83)	1.66 (1.53-1.77)	0.898 (0.818-0.986)	6.47 (3.66-9)	8.13 (5.37-10.7)	7.37 (4.6-9.88)
Guam	Female	89.7 (86.7-92.2)	0.756 (0.669-0.869)	0.315 (0.27-0.377)	6.15 (3.34-8.65)	6.91 (4.2-9.39)	6.47 (3.72-8.94)
Kiribati	Male	67 (62.6-70.9)	3.32 (2.96-3.85)	2.39 (2.11-2.75)	5.72 (2.36-8.38)	9.04 (5.83-11.6)	8.11 (4.9-10.7)
Kiribati	Female	72.2 (67.9-76.1)	1.38 (1.18-1.61)	0.945 (0.79-1.13)	5.1 (1.57-8.13)	6.49 (3.05-9.39)	6.05 (2.62-8.95)
Marshall Islands	Male	67.6 (62.6-71.9)	2.31 (1.99-2.66)	1.51 (1.3-1.76)	4.01 (0.301-6.91)	6.32 (2.76-9.07)	5.51 (1.95-8.28)
Marshall Islands	Female	70.4 (65.2-74.8)	0.693 (0.55-0.825)	0.333 (0.255-0.417)	3.45 (-0.601-6.83)	4.15 (0.121-7.43)	3.79 (-0.24-7.11)
Micronesia (Federated States of)	Male	67.6 (63.2-71.4)	2.75 (2.43-3.07)	1.83 (1.59-2.1)	2.9 (-0.0819-5.29)	5.65 (2.79-8.02)	4.73 (1.86-7.06)
Micronesia (Federated States of)	Female	72.3 (68.2-76)	1.15 (0.968-1.39)	0.705 (0.565-0.881)	2.49 (-0.64-5.16)	3.65 (0.668-6.17)	3.2 (0.194-5.75)
Nauru	Male	63.1 (57.4-67.9)	2.5 (2.28-2.84)	1.74 (1.58-1.98)	3.74 (-0.567-7.12)	6.24 (2.13-9.57)	5.48 (1.37-8.8)
Nauru	Female	70.3 (64.8-74.8)	1.24 (0.981-1.59)	0.714 (0.529-0.964)	4.44 (-0.31-7.66)	5.68 (1.25-8.81)	5.15 (0.649-8.34)
Niue	Male	69.8 (66.8-72.3)	1.69 (1.51-1.87)	1.16 (1.04-1.29)	4.16 (1.43-6.38)	5.84 (3.06-8.14)	5.32 (2.54-7.59)
Niue	Female	74 (70.6-76.9)	0.52 (0.419-0.615)	0.198 (0.154-0.249)	3.91 (0.885-6.39)	4.43 (1.42-6.87)	4.1 (1.11-6.55)
Northern Mariana Islands	Male	73.3 (71.1-75.2)	1.7 (1.59-1.8)	0.946 (0.876-1.01)	2.18 (0.0927-3.72)	3.89 (1.78-5.48)	3.13 (1.05-4.68)
Northern Mariana Islands	Female	78.6 (76.1-80.7)	0.432 (0.385-0.48)	0.148 (0.127-0.172)	2.34 (0.19-4.01)	2.78 (0.655-4.43)	2.49 (0.359-4.14)
Palau	Male	71.3 (67.4-74.3)	2.27 (2.06-2.47)	1.55 (1.43-1.67)	5.71 (0.717-5.67)	5.78 (3.06-7.97)	5.06 (2.31-7.25)
Palau	Female	72.7 (69.2-75.2)	0.567 (0.518-0.62)	0.234 (0.209-0.261)	2.24 (-0.249-4)	2.8 (0.361-4.58)	2.47 (0.011-4.24)
Papua New Guinea	Male	71.8 (67.1-75.5)	1.31 (1.11-1.52)	0.571 (0.471-0.701)	6.96 (2.76-10.8)	8.27 (4.15-12)	7.53 (3.42-11.3)
Papua New Guinea	Female	73.7 (68.8-77.6)	0.737 (0.607-0.883)	0.288 (0.226-0.368)	6.61 (2.24-10.8)	7.35 (3.14-11.5)	6.9 (2.62-11.1)
Samoa	Male	72.8 (69.3-75.8)	2.14 (1.9-2.4)	1.29 (1.13-1.47)	4 (1.05-6.61)	6.14 (3.33-8.59)	5.29 (2.47-7.79)
Samoa	Female	73.9 (70.1-77.3)	0.747 (0.606-0.913)	0.263 (0.199-0.337)	2.92 (-0.124-5.7)	3.67 (0.768-6.31)	3.19 (0.203-5.88)
Solomon Islands	Male	67.4 (62.6-71.4)	2.74 (2.45-2.99)	2.15 (1.91-2.36)	3.74 (0.36-6.9)	6.48 (3.03-9.46)	5.89 (2.41-8.9)
Solomon Islands	Female	71.6 (66.5-75.9)	1.01 (0.825-1.2)	0.657 (0.529-0.796)	3.3 (-1.19-6.84)	4.31 (0.0569-7.73)	3.96 (-0.362-7.41)
Tokelau	Male	73.2 (69.9-76)	1.71 (1.5-1.95)	0.973 (0.832-1.15)	4.98 (1.97-7.08)	6.69 (3.72-8.76)	5.95 (2.99-8)
Tokelau	Female	74.6 (70.5-78)	0.644 (0.54-0.752)	0.277 (0.225-0.34)	5.48 (1.85-8.01)	6.12 (2.5-8.62)	5.76 (2.15-8.26)
Tonga	Male	74.2 (71-77)	2.3 (2.15-2.45)	1.63 (1.53-1.73)	3.52 (1.33-5.32)	5.82 (3.59-7.7)	5.15 (2.93-7.01)
Tonga	Female	79 (75.6-81.9)	0.513 (0.461-0.569)	0.176 (0.155-0.2)	3.22 (0.849-5.06)	3.73 (1.36-5.58)	3.39 (1.02-5.24)
Tuvalu	Male	69.8 (65.4-73.2)	2.61 (2.31-2.91)	1.78 (1.54-2.02)	3.83 (0.671-6.37)	6.44 (3.46-8.85)	5.61 (2.6-8.02)
Tuvalu	Female	74.5 (70.4-78)	1.04 (0.862-1.23)	0.6 (0.48-0.748)	3.68 (0.541-6.2)	4.72 (1.72-7.14)	4.28 (1.26-6.74)
Vanuatu	Male	69.5 (65.7-73)	1.65 (1.42-1.85)	1.01 (0.867-1.15)	7.27 (3.37-10.8)	8.92 (5.13-12.5)	8.28 (4.46-11.8)
Vanuatu	Female	74.7 (71.1-78)	0.213 (0.178-0.252)	0.0571 (0.0475-0.0679)	5.79 (1.9-9.34)	6.01 (2.13-9.54)	5.85 (1.96-9.4)
Southeast Asia	Male	75.2 (73.1-77.1)	1.89 (1.8-2)	1.18 (1.12-1.25)	5.16 (3.31-6.82)	7.06 (5.14-8.74)	6.34 (4.44-8.02)
Southeast Asia	Female	80.3 (78.1-82.4)	0.271 (0.257-0.286)	0.105 (0.0996-0.112)	4.55 (2.65-6.17)	4.82 (2.91-6.44)	4.65 (2.75-6.28)
Cambodia	Male	72.9 (69.9-75.9)	2.4 (2.21-2.61)	1.92 (1.76-2.08)	5.88 (4.17-7.42)	8.29 (6.47-10)	7.8 (5.99-9.5)
Cambodia	Female	77.5 (74.4-80.6)	0.404 (0.372-0.442)	0.177 (0.163-0.195)	5.24 (3.2-6.93)	5.65 (3.62-7.35)	5.42 (3.39-7.11)
Indonesia	Male	75.7 (72.8-78.5)	2.08 (1.93-2.25)	1.27 (1.17-1.38)	6.22 (4.19-7.99)	8.3 (6.21-10.1)	7.49 (5.45-9.31)
Indonesia	Female	78.9 (76.3-81.6)	0.252 (0.228-0.276)	0.0976 (0.0867-0.113)	5.43 (3.51-7.18)	5.68 (3.75-7.44)	5.52 (3.6-7.29)
Lao People's Democratic Republic	Male	74.2 (70.8-77.2)	2.77 (2.51-3)	2.14 (1.94-2.31)	8.29 (6.2-10.1)	11.1 (8.92-13)	10.4 (8.28-12.3)
Lao People's Democratic Republic	Female	78.3 (74.6-81.1)	0.508 (0.451-0.58)	0.283 (0.252-0.322)	7.77 (5.49-9.83)	8.27 (5.99-10.4)	8.05 (5.77-10.1)
Malaysia	Male	77.8 (75.8-79.2)	1.65 (1.54-1.76)	0.857 (0.8-0.924)	5.2 (3.33-6.62)	6.85 (4.86-8.33)	6.06 (4.12-7.52)
Malaysia	Female	80.3 (78.8-81.5)	0.139 (0.131-0.15)	0.0464 (0.0398-0.054)	3.31 (1.8-4.42)	3.45 (1.94-4.57)	3.36 (1.84-4.47)
Maldives	Male	84.4 (81.7-86.7)	2.15 (1.98-2.33)	1.74 (1.58-1.89)	4.64 (2.65-6.36)	6.8 (4.66-8.63)	6.38 (4.25-8.19)
Maldives	Female	87 (84.1-89.3)	0.401 (0.364-0.445)	0.159 (0.143-0.178)	4.7 (2.44-6.67)	5.1 (2.83-7.07)	4.86 (2.59-6.84)
Mauritius	Male	76.7 (74.8-78.1)	1.8 (1.69-1.92)	1.28 (1.2-1.36)	4.81 (3.07-6.31)	6.62 (4.79-8.19)	6.09 (4.29-7.64)
Mauritius	Female	82.1 (80.2-83.6)	0.177 (0.168-0.185)	0.0384 (0.0362-0.0407)	3.94 (2.11-5.29)	4.12 (2.29-5.47)	3.98 (2.15-5.33)

Supplementary Results Table S3. Life expectancy at birth by location, sex, and scenario

Location	Sex	2050			Change between 2022 and 2050		
		Reference	Difference between		Reference	Elimination - 2023	Elimination - 2050
			Elimination-2023 and Reference	Elimination-2050 and Reference			
Myanmar	Male	71.5 (67.1-74.6)	1.51 (1.3-1.67)	0.981 (0.84-1.09)	5.32 (1.95-9.2)	6.83 (3.31-10.7)	6.3 (2.84-10.1)
Myanmar	Female	79 (74.8-81.8)	0.509 (0.428-0.565)	0.272 (0.233-0.303)	6.19 (2.88-9.07)	6.7 (3.4-9.56)	6.47 (3.17-9.33)
Philippines	Male	74.9 (72.2-77.9)	1.53 (1.45-1.62)	0.831 (0.782-0.882)	5.87 (4.23-7.21)	7.4 (5.75-8.7)	6.7 (5.05-8.02)
Philippines	Female	79.5 (77.1-81.7)	0.381 (0.362-0.403)	0.175 (0.166-0.188)	4.2 (2.63-5.52)	4.58 (3.01-5.91)	4.37 (2.8-5.7)
Seychelles	Male	75.9 (74.3-77.3)	1.76 (1.65-1.87)	1.28 (1.2-1.38)	4.54 (3.37-5.49)	6.3 (5.13-7.31)	5.82 (4.65-6.82)
Seychelles	Female	80.4 (78.7-81.8)	0.196 (0.184-0.21)	0.0397 (0.037-0.0423)	3.18 (1.8-4.25)	3.38 (2-4.45)	3.22 (1.84-4.29)
Sri Lanka	Male	78.8 (74.1-82.9)	1.09 (0.957-1.19)	0.668 (0.583-0.727)	3.89 (-0.0564-7.91)	4.98 (0.909-9.05)	4.56 (0.548-8.6)
Sri Lanka	Female	84.4 (80.5-87.8)	0.13 (0.113-0.152)	0.0429 (0.0362-0.0505)	3.53 (0.619-6.48)	3.66 (0.733-6.61)	3.57 (0.657-6.52)
Thailand	Male	78.7 (75.1-82.2)	1.83 (1.69-2)	1.17 (1.08-1.27)	5.01 (3.4-6.18)	6.84 (5.08-8.19)	6.18 (4.45-7.46)
Thailand	Female	84.8 (82.3-87.5)	0.209 (0.187-0.234)	0.0389 (0.0349-0.0437)	3.58 (2.04-4.8)	3.79 (2.21-5.04)	3.62 (2.07-4.84)
Timor-Leste	Male	75.1 (71.1-78.3)	2.09 (1.85-2.3)	1.24 (1.09-1.37)	6.04 (3.18-8.41)	8.14 (5.21-10.5)	7.28 (4.38-9.67)
Timor-Leste	Female	79 (75.2-81.9)	0.226 (0.203-0.248)	0.0712 (0.0635-0.0786)	6.87 (4.04-9.13)	7.1 (4.26-9.35)	6.95 (4.11-9.2)
Viet Nam	Male	72.4 (69.8-74.7)	1.82 (1.63-1.98)	1.17 (1.04-1.29)	2.02 (0.102-3.46)	3.83 (1.91-5.3)	3.18 (1.29-4.61)
Viet Nam	Female	82.2 (79.7-84.3)	0.158 (0.142-0.175)	0.0417 (0.0375-0.0463)	3.39 (1.63-4.83)	3.55 (1.8-4.97)	3.43 (1.68-4.86)
Sub-Saharan Africa	Male	71.8 (68.1-74.4)	0.553 (0.513-0.585)	0.314 (0.291-0.338)	9.56 (6.42-11.7)	10.1 (6.96-12.3)	9.88 (6.74-12.1)
Sub-Saharan Africa	Female	75.8 (72.1-78.2)	0.106 (0.0965-0.116)	0.0488 (0.0437-0.0543)	9.19 (5.98-11.2)	9.3 (6.08-11.3)	9.24 (6.03-11.2)
Central Sub-Saharan Africa	Male	70.1 (65.8-73.4)	0.742 (0.666-0.819)	0.473 (0.418-0.53)	8.76 (5.22-11.5)	9.51 (5.98-12.3)	9.24 (5.72-12)
Central Sub-Saharan Africa	Female	74.4 (70.1-77.7)	0.0843 (0.0701-0.101)	0.0356 (0.0283-0.0432)	8.55 (5.5-10.9)	8.63 (5.58-11)	8.58 (5.54-11)
Angola	Male	70.8 (66.4-74.3)	1.08 (0.974-1.17)	0.771 (0.692-0.835)	8.58 (5.61-11)	9.66 (6.68-12.1)	9.35 (6.39-11.8)
Angola	Female	75.3 (70.7-78.8)	0.142 (0.122-0.165)	0.0599 (0.0482-0.0733)	8.76 (5.63-10.9)	8.9 (5.78-11.1)	8.82 (5.7-11)
Central African Republic	Male	61 (53.6-66.5)	0.68 (0.433-0.782)	0.461 (0.291-0.53)	11.7 (4.36-20)	12.4 (4.94-20.8)	12.2 (4.76-20.5)
Central African Republic	Female	67.9 (58.8-73.5)	0.0827 (0.0489-0.103)	0.0346 (0.0196-0.0445)	12 (3.12-20)	12 (3.17-20.1)	12 (3.14-20)
Congo	Male	70.1 (65.6-73.6)	1.15 (1.02-1.26)	0.822 (0.727-0.898)	6.55 (2.76-9.22)	7.7 (3.83-10.4)	7.38 (3.53-10.1)
Congo	Female	72.4 (68-75.9)	0.0788 (0.0636-0.0949)	0.0333 (0.025-0.042)	7.49 (4.29-9.81)	7.57 (4.38-9.88)	7.52 (4.33-9.84)
Democratic Republic of the Congo	Male	70.3 (65.6-73.8)	0.6 (0.524-0.687)	0.349 (0.298-0.412)	8.44 (4.42-11.4)	9.04 (4.99-12)	8.79 (4.76-11.7)
Democratic Republic of the Congo	Female	74.6 (70-78.1)	0.0642 (0.051-0.0827)	0.0279 (0.0214-0.0357)	8.04 (4.6-11)	8.11 (4.66-11)	8.07 (4.63-11)
Equatorial Guinea	Male	70 (64.8-74)	0.887 (0.731-1.01)	0.52 (0.428-0.608)	7.25 (2.93-10.7)	8.14 (3.78-11.7)	7.77 (3.43-11.3)
Equatorial Guinea	Female	75.1 (69.7-79.9)	0.069 (0.0558-0.081)	0.0208 (0.0159-0.0258)	8.72 (4.69-12)	8.79 (4.74-12.1)	8.74 (4.71-12.1)
Gabon	Male	69.8 (65.9-72.9)	0.854 (0.759-0.971)	0.499 (0.444-0.569)	5.94 (3.3-8.1)	6.8 (4.12-9.03)	6.44 (3.79-8.66)
Gabon	Female	76.1 (72.4-79.7)	0.0825 (0.0692-0.0964)	0.0169 (0.0133-0.021)	6.49 (4.32-8.2)	6.57 (4.41-8.28)	6.51 (4.34-8.21)
Eastern Sub-Saharan Africa	Male	72.5 (69.4-74.8)	0.596 (0.557-0.638)	0.374 (0.348-0.403)	9.76 (6.85-11.8)	10.4 (7.45-12.4)	10.1 (7.23-12.2)
Eastern Sub-Saharan Africa	Female	76.6 (73.3-78.8)	0.14 (0.125-0.155)	0.0822 (0.0732-0.0919)	9.3 (6.62-11.2)	9.44 (6.76-11.4)	9.38 (6.7-11.3)
Burundi	Male	71.4 (67.2-75)	0.587 (0.519-0.649)	0.375 (0.327-0.424)	11.8 (7.82-17.3)	12.4 (8.42-17.8)	12.2 (8.21-17.6)
Burundi	Female	75.6 (71.5-78.9)	0.0813 (0.0685-0.0951)	0.0249 (0.019-0.0319)	11.1 (7.43-15.1)	11.1 (7.51-15.2)	11.1 (7.45-15.1)
Comoros	Male	73.8 (70-76.7)	0.837 (0.775-0.896)	0.583 (0.54-0.625)	6.2 (3.33-8.16)	7.04 (4.16-9.03)	6.79 (3.9-8.77)
Comoros	Female	76 (72.4-78.8)	0.107 (0.0949-0.119)	0.0339 (0.0302-0.0381)	6.23 (3.48-8.24)	6.33 (3.59-8.35)	6.26 (3.52-8.27)
Djibouti	Male	72.7 (68.4-76.2)	1.46 (1.32-1.62)	1.01 (0.916-1.12)	6.57 (4.02-8.54)	8.03 (5.45-10)	7.58 (5.01-9.56)
Djibouti	Female	77.2 (72.9-80.6)	0.207 (0.183-0.231)	0.0857 (0.0751-0.0964)	7.4 (5.07-9.33)	7.61 (5.28-9.54)	7.49 (5.16-9.42)
Eritrea	Male	69.3 (64.5-72.6)	0.524 (0.428-0.619)	0.277 (0.218-0.345)	8.83 (5.44-11.4)	9.36 (5.98-12)	9.11 (5.74-11.7)
Eritrea	Female	74.4 (70.4-77.8)	0.015 (0.0128-0.0172)	0.00388 (0.00321-0.00458)	8.35 (5.63-10.5)	8.37 (5.65-10.5)	8.36 (5.64-10.5)
Ethiopia	Male	75.8 (72.2-78.4)	0.373 (0.338-0.408)	0.214 (0.193-0.236)	9.12 (6.6-11.1)	9.49 (6.98-11.5)	9.33 (6.82-11.3)
Ethiopia	Female	78.9 (75.8-81.4)	0.0188 (0.0155-0.022)	0.00688 (0.00529-0.00856)	8.52 (6.21-10.3)	8.54 (6.23-10.3)	8.53 (6.22-10.3)
Kenya	Male	73.6 (70.7-76.4)	0.467 (0.391-0.527)	0.22 (0.183-0.25)	8.2 (5.77-10)	8.67 (6.28-10.5)	8.42 (6.01-10.2)
Kenya	Female	77.8 (75.1-80.2)	0.0722 (0.0583-0.106)	0.0224 (0.0183-0.0319)	7.19 (5.11-8.93)	7.27 (5.17-9)	7.22 (5.13-8.95)
Madagascar	Male	72 (67.9-75.5)	0.5 (0.424-0.571)	0.205 (0.171-0.238)	11.3 (7.9-15.2)	11.8 (8.44-15.7)	11.5 (8.13-15.4)
Madagascar	Female	73.9 (70-77.2)	0.0674 (0.0582-0.0763)	0.017 (0.0145-0.0196)	10.1 (6.92-13.2)	10.2 (6.99-13.2)	10.1 (6.93-13.2)
Malawi	Male	69.5 (65-72.8)	1.15 (1.04-1.25)	0.904 (0.817-0.985)	10.3 (6.64-13.2)	11.5 (7.75-14.4)	11.2 (7.51-14.1)
Malawi	Female	76.1 (71.9-79.9)	0.121 (0.101-0.143)	0.0703 (0.0565-0.084)	11.2 (8-14)	11.4 (8.13-14.1)	11.3 (8.08-14)
Mozambique	Male	68.7 (64.7-71.8)	0.798 (0.717-0.864)	0.55 (0.492-0.598)	11.8 (8.82-14.4)	12.6 (9.55-15.2)	12.3 (9.33-15)
Mozambique	Female	76 (71.6-80)	0.125 (0.104-0.142)	0.0288 (0.0226-0.0359)	12.9 (9.69-15.4)	13 (9.79-15.6)	12.9 (9.72-15.5)

Supplementary Results Table S3. Life expectancy at birth by location, sex, and scenario

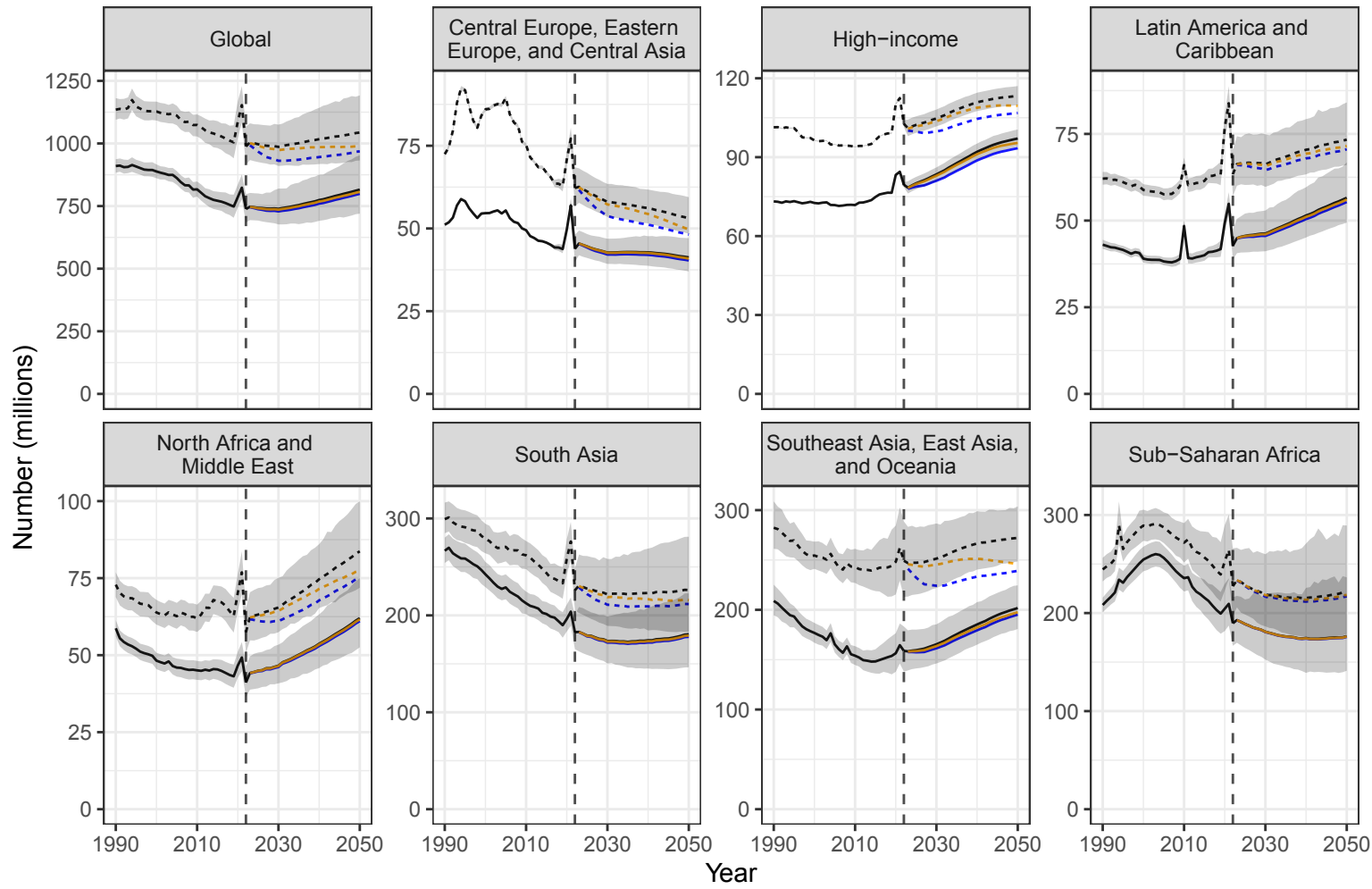
Location	Sex	2050			Change between 2022 and 2050		
		Reference	Difference between		Reference	Elimination - 2023	Elimination - 2050
			Elimination-2023 and Reference	Elimination-2050 and Reference			
Rwanda	Male	74.4 (70.8-77.2)	1.24 (1.1-1.35)	1.02 (0.908-1.11)	8.32 (6.1-10.3)	9.55 (7.23-11.6)	9.34 (7.04-11.3)
Rwanda	Female	78.1 (75-80.8)	0.644 (0.571-0.734)	0.501 (0.445-0.569)	7.94 (5.74-9.52)	8.58 (6.39-10.2)	8.44 (6.25-10)
Somalia	Male	63.2 (55.8-68.6)	0.815 (0.698-0.939)	0.558 (0.478-0.644)	8.2 (1.96-12.5)	9.01 (2.75-13.4)	8.76 (2.51-13.1)
Somalia	Female	69.1 (61.2-74.4)	0.118 (0.1-0.136)	0.0533 (0.0458-0.0628)	8.87 (1.77-13.2)	8.99 (1.88-13.3)	8.92 (1.83-13.2)
South Sudan	Male	66.9 (59.6-72.6)	0.645 (0.539-0.718)	0.386 (0.321-0.435)	11.7 (5.79-15.7)	12.3 (6.44-16.3)	12.1 (6.2-16)
South Sudan	Female	72 (63.5-77.6)	0.0935 (0.074-0.109)	0.037 (0.0299-0.0445)	11.8 (4.47-16.7)	11.8 (4.55-16.8)	11.8 (4.5-16.7)
Uganda	Male	72.9 (69.3-75.3)	0.357 (0.316-0.391)	0.149 (0.129-0.168)	10.6 (7.93-13.5)	11 (8.28-13.8)	10.8 (8.08-13.6)
Uganda	Female	78.5 (74.9-81)	0.148 (0.128-0.165)	0.0676 (0.0581-0.0759)	9.75 (7.63-12.4)	9.9 (7.77-12.6)	9.82 (7.7-12.5)
United Republic of Tanzania	Male	74.6 (71.4-77.3)	0.767 (0.687-0.854)	0.526 (0.462-0.601)	8.64 (6.31-10.5)	9.41 (7.2-11.2)	9.16 (6.94-11)
United Republic of Tanzania	Female	76.8 (73.8-79.3)	0.322 (0.288-0.359)	0.244 (0.217-0.273)	7.77 (5.67-9.52)	8.09 (6.03-9.84)	8.01 (5.94-9.76)
Zambia	Male	69.8 (66.1-73.4)	0.758 (0.699-0.833)	0.461 (0.42-0.511)	9.04 (6.66-11.4)	9.79 (7.42-12.1)	9.5 (7.13-11.8)
Zambia	Female	75 (70.9-78.9)	0.237 (0.211-0.269)	0.135 (0.119-0.154)	9.73 (7.46-11.8)	9.97 (7.7-12.1)	9.87 (7.6-12)
Southern Sub-Saharan Africa	Male	68.9 (66.5-70.8)	1.08 (1.03-1.14)	0.649 (0.608-0.697)	9.04 (7.05-10.5)	10.1 (8.11-11.6)	9.69 (7.69-11.2)
Southern Sub-Saharan Africa	Female	75.1 (72.9-76.9)	0.274 (0.261-0.286)	0.0901 (0.0828-0.0967)	9 (7.28-10.4)	9.27 (7.55-10.7)	9.09 (7.37-10.5)
Botswana	Male	72.8 (69.9-75.1)	1.67 (1.49-1.84)	1.2 (1.07-1.32)	11.7 (9.43-14.2)	13.4 (11.1-15.8)	12.9 (10.6-15.4)
Botswana	Female	78.2 (75.4-80.5)	0.41 (0.377-0.444)	0.184 (0.167-0.2)	12.1 (9.86-14.5)	12.5 (10.3-14.9)	12.3 (10-14.7)
Eswatini	Male	64.4 (60.1-68.3)	0.576 (0.512-0.639)	0.32 (0.284-0.356)	10.9 (7.51-14.4)	11.4 (8.08-15)	11.2 (7.83-14.7)
Eswatini	Female	73.1 (68.2-78)	0.238 (0.198-0.278)	0.165 (0.136-0.193)	13.3 (10.6-17.6)	13.5 (10.8-17.8)	13.4 (10.7-17.8)
Lesotho	Male	60.6 (56.7-63.8)	2.43 (2.19-2.65)	1.91 (1.72-2.08)	10.9 (7.91-13.2)	13.3 (10.2-15.8)	12.8 (9.74-15.2)
Lesotho	Female	70.1 (65.9-73.7)	0.365 (0.297-0.431)	0.333 (0.268-0.4)	13.6 (10.8-15.9)	14 (11.2-16.3)	14 (11.1-16.2)
Namibia	Male	69.5 (65.6-72.8)	0.846 (0.741-0.934)	0.603 (0.522-0.671)	9.13 (6.62-11.3)	9.98 (7.41-12.1)	9.74 (7.17-11.9)
Namibia	Female	77.5 (73.4-81.2)	0.449 (0.406-0.498)	0.278 (0.25-0.309)	10.2 (8.11-12.1)	10.6 (8.54-12.5)	10.5 (8.37-12.4)
South Africa	Male	69.6 (67.7-71.2)	0.887 (0.843-0.94)	0.438 (0.413-0.464)	8.34 (6.61-9.63)	9.22 (7.51-10.5)	8.77 (7.06-10.1)
South Africa	Female	75.8 (74.3-77.1)	0.258 (0.244-0.271)	0.0461 (0.0427-0.0496)	7.99 (6.6-9.2)	8.25 (6.86-9.46)	8.03 (6.65-9.25)
Zimbabwe	Male	65.8 (61.8-69.2)	1.8 (1.64-1.94)	1.42 (1.3-1.53)	9.5 (6.13-12.2)	11.3 (7.87-14.1)	10.9 (7.52-13.7)
Zimbabwe	Female	71.3 (67.2-74.8)	0.334 (0.304-0.363)	0.249 (0.225-0.274)	10.2 (7.2-12.5)	10.4 (7.52-12.8)	10.4 (7.44-12.7)
Western Sub-Saharan Africa	Male	72.3 (68-75.6)	0.349 (0.287-0.384)	0.144 (0.119-0.162)	9.25 (5.15-11.9)	9.6 (5.52-12.2)	9.39 (5.3-12)
Western Sub-Saharan Africa	Female	75.7 (71-78.9)	0.0485 (0.0388-0.0565)	0.0155 (0.0124-0.0182)	9.15 (5-11.7)	9.2 (5.05-11.8)	9.16 (5.01-11.7)
Benin	Male	71.6 (62.1-75.7)	0.299 (0.159-0.345)	0.0662 (0.0325-0.0782)	8.28 (-0.327-12)	8.58 (-0.187-12.3)	8.34 (-0.292-12.1)
Benin	Female	76 (61.3-79.9)	0.0455 (0.0217-0.0566)	0.0121 (0.00585-0.0155)	7.73 (-6.46-11.8)	7.77 (-6.43-11.8)	7.74 (-6.45-11.8)
Burkina Faso	Male	69.4 (61-73.5)	0.288 (0.109-0.348)	0.107 (0.0313-0.14)	9.02 (0.275-13)	9.31 (0.546-13.3)	9.13 (0.381-13.1)
Burkina Faso	Female	74.2 (60.7-78.8)	0.0148 (0.00576-0.0189)	0.00249 (0.00025-0.00342)	9.09 (-3.82-13.4)	9.1 (-3.81-13.4)	9.09 (-3.82-13.4)
Cabo Verde	Male	74.8 (72.4-77.2)	0.533 (0.484-0.589)	0.214 (0.19-0.241)	5.16 (3.79-6.29)	5.7 (4.32-6.85)	5.38 (4.01-6.51)
Cabo Verde	Female	82.3 (80.2-84.7)	0.0943 (0.0821-0.108)	0.0242 (0.0199-0.0289)	4.05 (2.75-5.09)	4.15 (2.84-5.2)	4.08 (2.77-5.12)
Cameroon	Male	70.8 (64.9-74.9)	0.403 (0.282-0.487)	0.164 (0.111-0.21)	7.77 (2.38-10.7)	8.17 (2.71-11)	7.93 (2.52-10.8)
Cameroon	Female	75.3 (70.2-79.2)	0.0378 (0.03-0.0424)	0.0146 (0.0099-0.0188)	8.27 (4.57-11.1)	8.31 (4.59-11.1)	8.29 (4.58-11.1)
Chad	Male	69.8 (64.8-74.2)	0.433 (0.371-0.482)	0.184 (0.155-0.207)	10.7 (7.09-13.6)	11.1 (7.52-14)	10.8 (7.27-13.8)
Chad	Female	73.7 (68.8-77.7)	0.0684 (0.059-0.0773)	0.0104 (0.00898-0.0117)	11.4 (7.38-14.5)	11.5 (7.45-14.5)	11.4 (7.39-14.5)
Côte d'Ivoire	Male	72.6 (66.8-76.8)	0.515 (0.269-0.634)	0.203 (0.102-0.252)	9.82 (4.31-13)	10.3 (4.52-13.6)	10 (4.41-13.2)
Côte d'Ivoire	Female	77.4 (71.1-81.2)	0.088 (0.0489-0.11)	0.0194 (0.0109-0.0261)	9.57 (4-12.8)	9.66 (4.06-12.9)	9.59 (4.02-12.9)
Gambia	Male	72.2 (68.4-75.4)	0.591 (0.519-0.664)	0.275 (0.235-0.317)	8.49 (5.66-10.7)	8.08 (6.32-11.3)	8.76 (5.98-11)
Gambia	Female	76.3 (73-79.4)	0.036 (0.0302-0.0425)	0.0143 (0.0114-0.0177)	8.43 (6.15-10.5)	8.45 (6.19-10.6)	8.45 (6.17-10.5)
Ghana	Male	70.1 (63.7-73.7)	0.517 (0.388-0.575)	0.356 (0.259-0.396)	6.35 (-0.704-8.87)	6.35 (-0.243-9.37)	6.19 (-0.386-9.22)
Ghana	Female	75.8 (70.5-79.4)	0.0887 (0.0656-0.1)	0.0282 (0.0207-0.0314)	6.38 (0.57-9.15)	6.47 (0.62-9.24)	6.41 (0.587-9.18)
Guinea	Male	72.2 (61.9-76.3)	0.591 (0.507-0.895)	0.275 (0.248-0.429)	8.49 (1.93-14.1)	8.08 (2.63-14.8)	8.76 (2.26-14.5)
Guinea	Female	73.7 (65-78.1)	0.0951 (0.0591-0.113)	0.0312 (0.0198-0.0375)	9.46 (1.15-13.6)	9.55 (1.2-13.7)	9.49 (1.16-13.6)
Guinea-Bissau	Male	67.5 (63.4-70.6)	0.647 (0.574-0.717)	0.434 (0.381-0.489)	11.6 (7.01-27.7)	12.2 (7.71-28.3)	12 (7.48-28.1)
Guinea-Bissau	Female	73 (69-76.1)	0.0791 (0.0679-0.0918)	0.0372 (0.031-0.0447)	11.4 (7.18-27.9)	11.4 (7.26-28)	11.4 (7.22-27.9)
Liberia	Male	74 (64.4-77.4)	0.442 (0.285-0.516)	0.228 (0.145-0.281)	7.7 (1.11-11.7)	7.7 (1.57-12.2)	7.93 (1.37-12)
Liberia	Female	74 (66.6-78.6)	0.0816 (0.0512-0.102)	0.0292 (0.0195-0.0387)	7.84 (1.25-11.6)	7.92 (1.31-11.7)	7.86 (1.27-11.6)

Supplementary Results Table S3. Life expectancy at birth by location, sex, and scenario

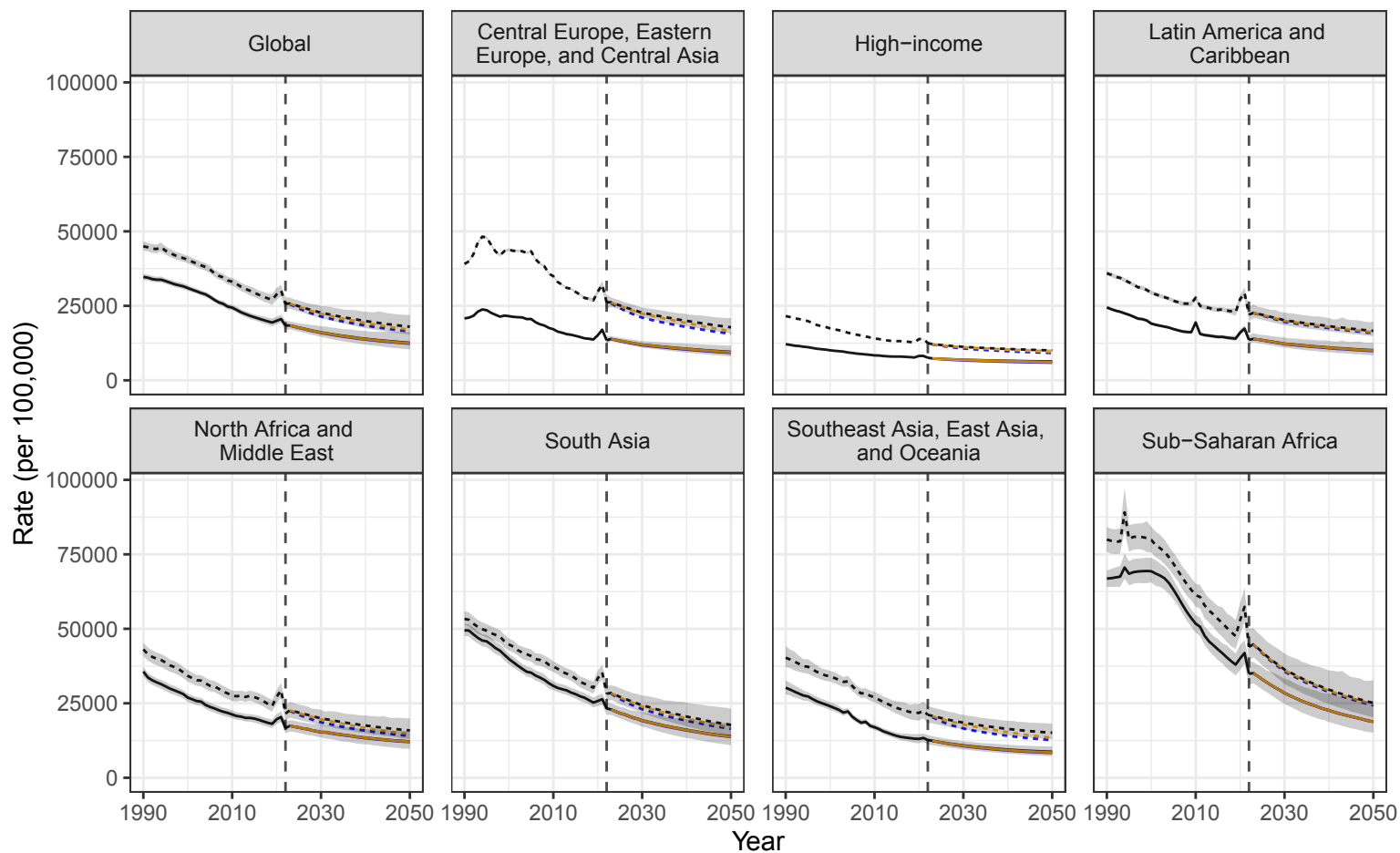
Location	Sex	2050			Change between 2022 and 2050		
		Reference	Difference between Elimination-2023 and Reference	Difference between Elimination-2050 and Reference	Reference	Elimination - 2023	Elimination - 2050
Mali	Male	72.6 (67.9–76.1)	0.795 (0.693–0.875)	0.517 (0.443–0.57)	10.5 (6.53–13.6)	11.3 (7.26–14.5)	11 (7–14.2)
	Female	74 (69.4–77.8)	0.121 (0.0955–0.147)	0.0564 (0.0434–0.0718)	9.94 (6.18–13.1)	10.1 (6.29–13.2)	9.99 (6.23–13.1)
Mauritania	Male	75.8 (72–79.3)	0.424 (0.36–0.497)	0.141 (0.113–0.178)	6.13 (3.12–12.1)	6.55 (3.53–12.5)	6.27 (3.26–12.2)
	Female	77 (73.6–80.1)	0.0751 (0.0589–0.0959)	0.0126 (0.00918–0.0174)	6.35 (3.62–10)	6.42 (3.71–10.1)	6.36 (3.63–10)
Niger	Male	70.4 (64.3–75.2)	0.269 (0.174–0.318)	0.0821 (0.0431–0.0982)	7.58 (0.245–11.3)	7.85 (0.426–11.6)	7.67 (0.305–11.4)
	Female	71.7 (64.1–76.3)	0.0307 (0.021–0.0384)	0.00613 (0.00397–0.00808)	6.67 (-0.409–10.7)	6.7 (-0.384–10.7)	6.68 (-0.404–10.7)
Nigeria	Male	73.8 (67–78.1)	0.2 (0.126–0.238)	0.0373 (0.0246–0.0475)	9.76 (3.11–13.2)	9.96 (3.27–13.4)	9.8 (3.14–13.2)
	Female	76.7 (70.4–80.7)	0.0284 (0.0185–0.0349)	0.00883 (0.00651–0.0111)	9.77 (3.75–12.8)	9.8 (3.76–12.8)	9.78 (3.75–12.8)
Sao Tome and Principe	Male	75.3 (73.1–77.1)	0.637 (0.569–0.733)	0.349 (0.305–0.405)	4.61 (2.93–6.2)	5.24 (3.54–6.85)	4.95 (3.27–6.56)
	Female	78 (75.5–80.2)	0.0961 (0.0805–0.114)	0.0509 (0.042–0.0609)	4.36 (2.6–6.05)	4.45 (2.7–6.14)	4.41 (2.66–6.1)
Senegal	Male	75.2 (72–78.1)	0.362 (0.315–0.407)	0.121 (0.101–0.143)	7.64 (5.62–9.37)	8 (6–9.73)	7.76 (5.75–9.48)
	Female	78.5 (75.3–81.3)	0.0217 (0.018–0.0261)	0.00179 (0.00144–0.00224)	7.72 (5.71–9.41)	7.74 (5.73–9.43)	7.72 (5.71–9.41)
Sierra Leone	Male	72.6 (65.2–77.1)	0.531 (0.33–0.63)	0.258 (0.166–0.318)	10.7 (3.92–15.1)	11.3 (4.24–15.7)	11 (4.06–15.4)
	Female	73.8 (64.2–78.5)	0.0877 (0.0455–0.117)	0.0169 (0.00935–0.0237)	9.84 (1.37–13.8)	9.93 (1.43–13.8)	9.86 (1.38–13.8)
Togo	Male	70.9 (64.9–75.2)	0.601 (0.348–0.678)	0.354 (0.201–0.402)	8.39 (1.93–11.4)	8.99 (2.23–12)	8.74 (2.09–11.8)
	Female	76 (69–80.4)	0.123 (0.092–0.145)	0.0659 (0.0486–0.0802)	8.11 (2.25–11.1)	8.23 (2.38–11.2)	8.17 (2.32–11.1)

Supplementary Results Figure S1. Years of Life Lost (YLLs) by scenario, all causes

A. Number of YLLs, all ages

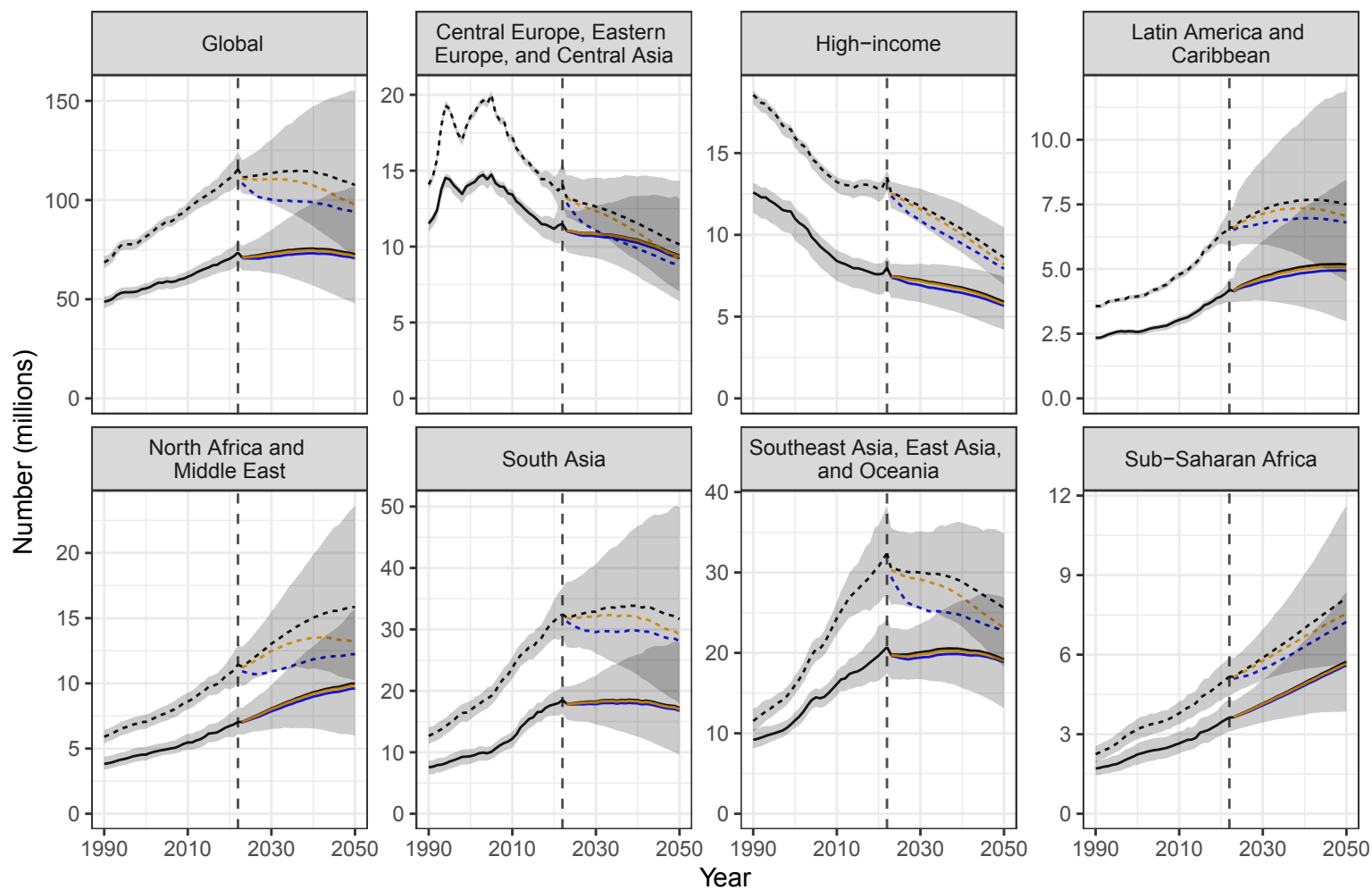


B. Age-standardized rate of YLLs

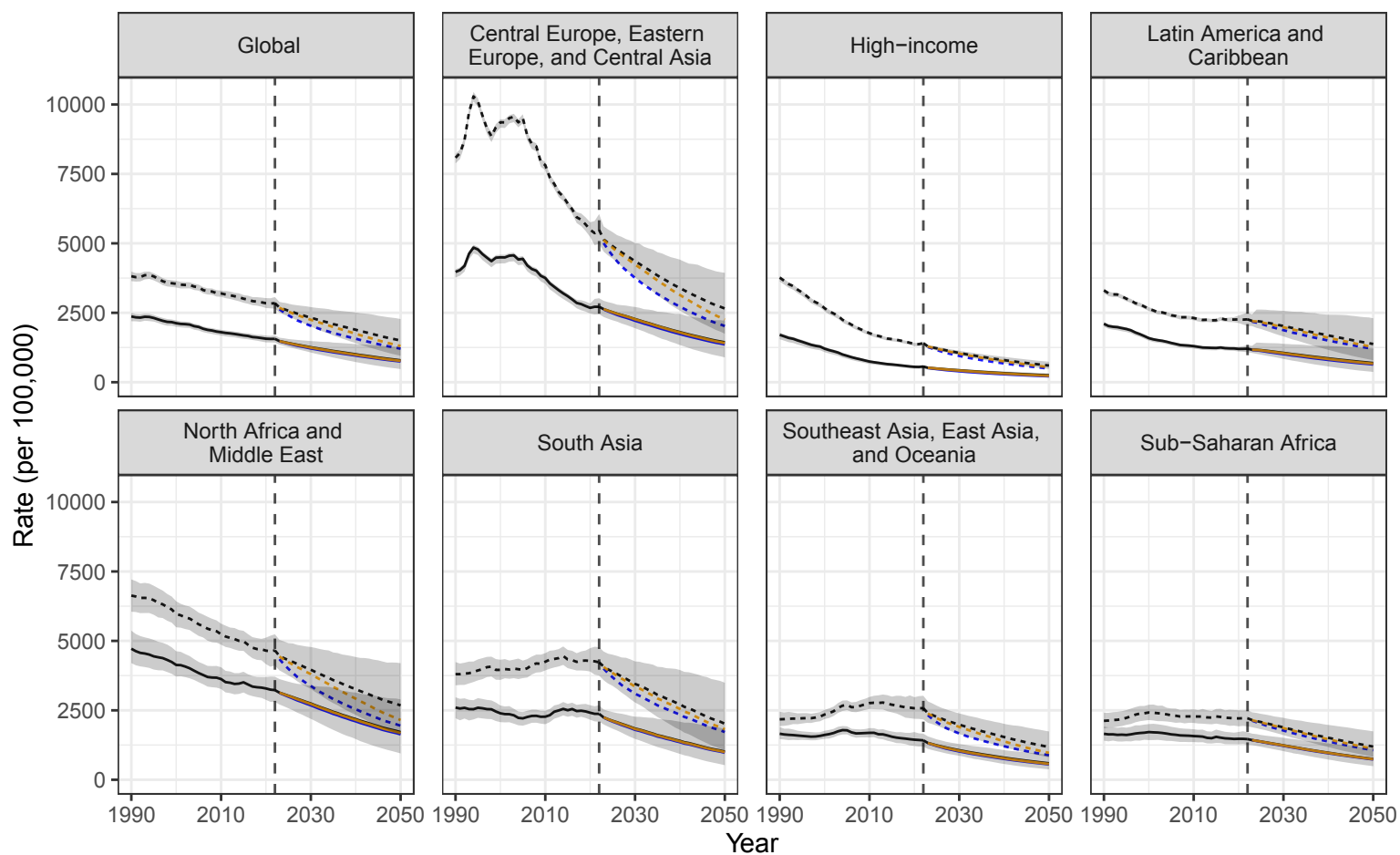


Supplementary Results Figure S2. Years of Life Lost (YLLs) by scenario, IHD

A. Number of YLLs, all ages



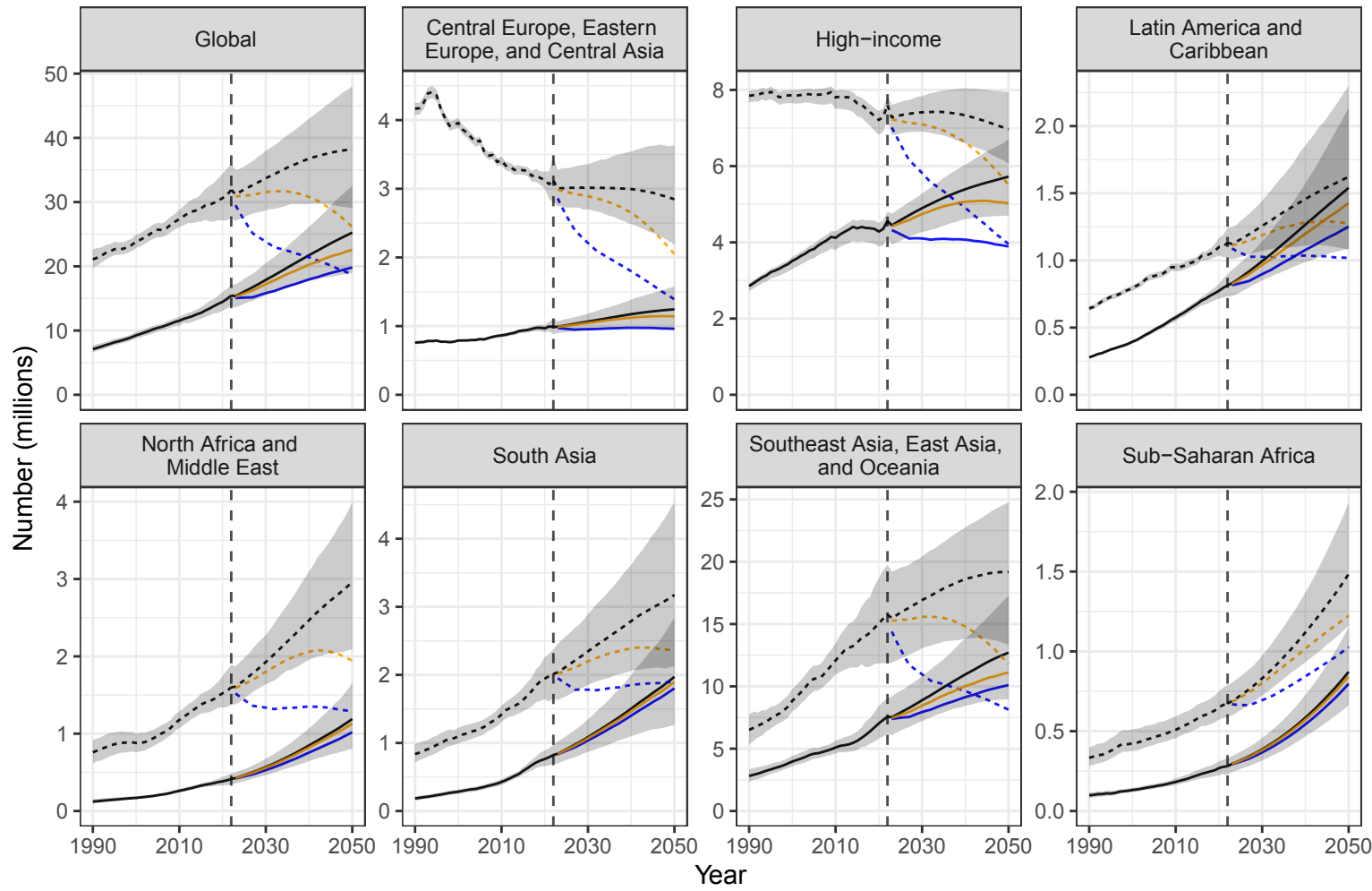
B. Age-standardized rate of YLLs



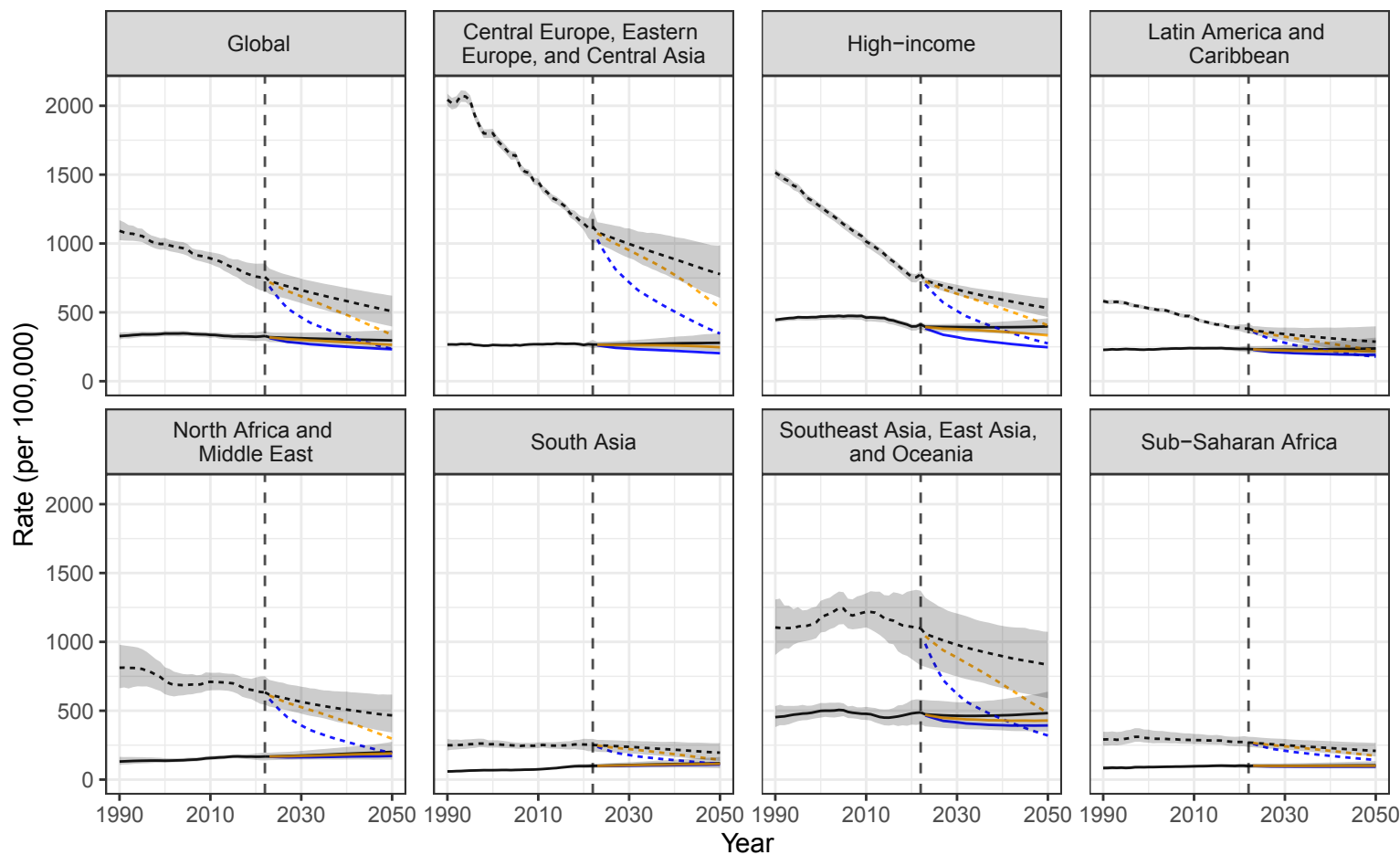
Past
 Reference
 Elimination - 2023
 Elimination - 2050
 Female
 Male

Supplementary Results Figure S3. Years of Life Lost (YLLs) by scenario, lung cancer

A. Number of YLLs, all ages



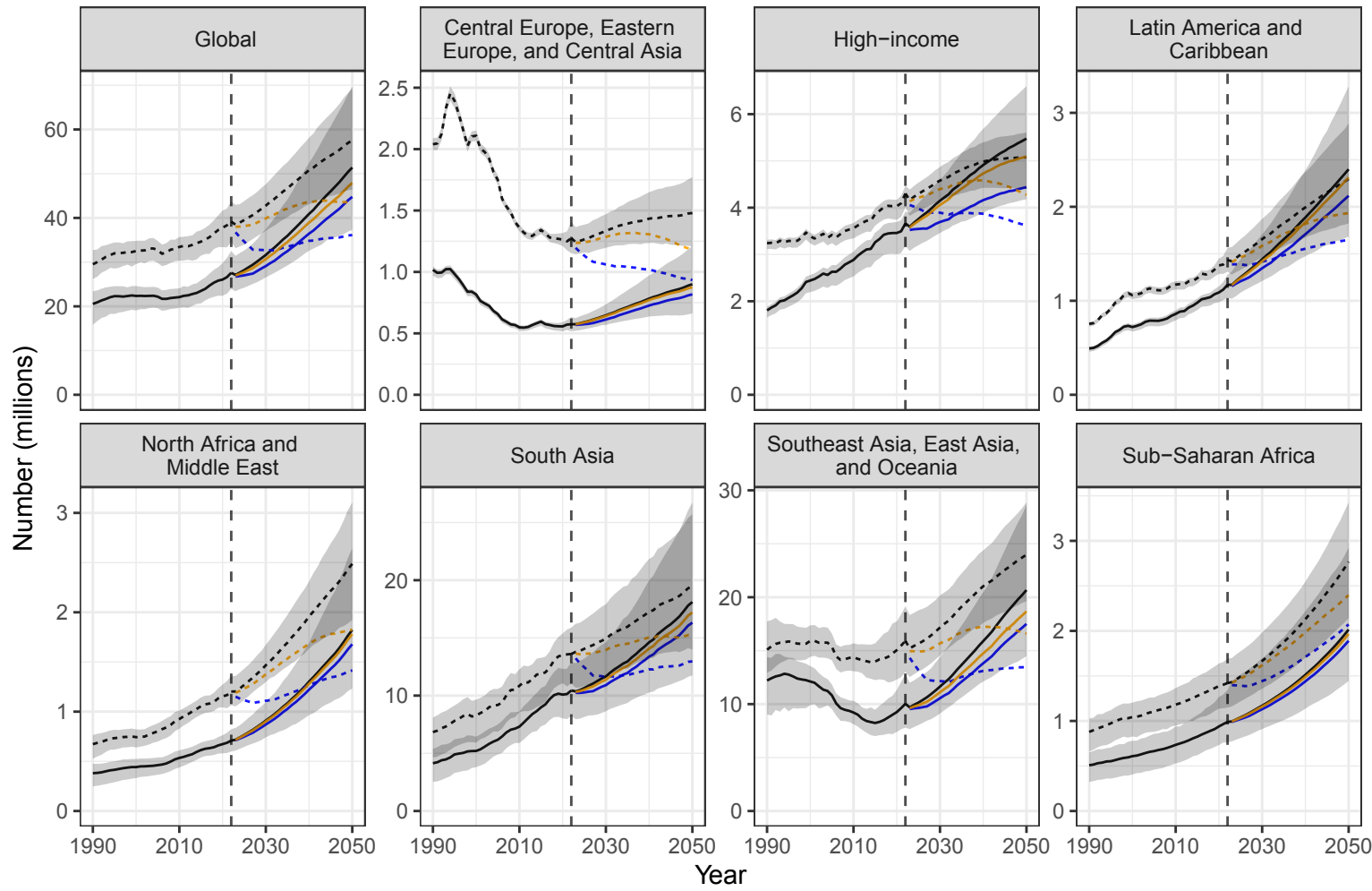
B. Age-standardized rate of YLLs



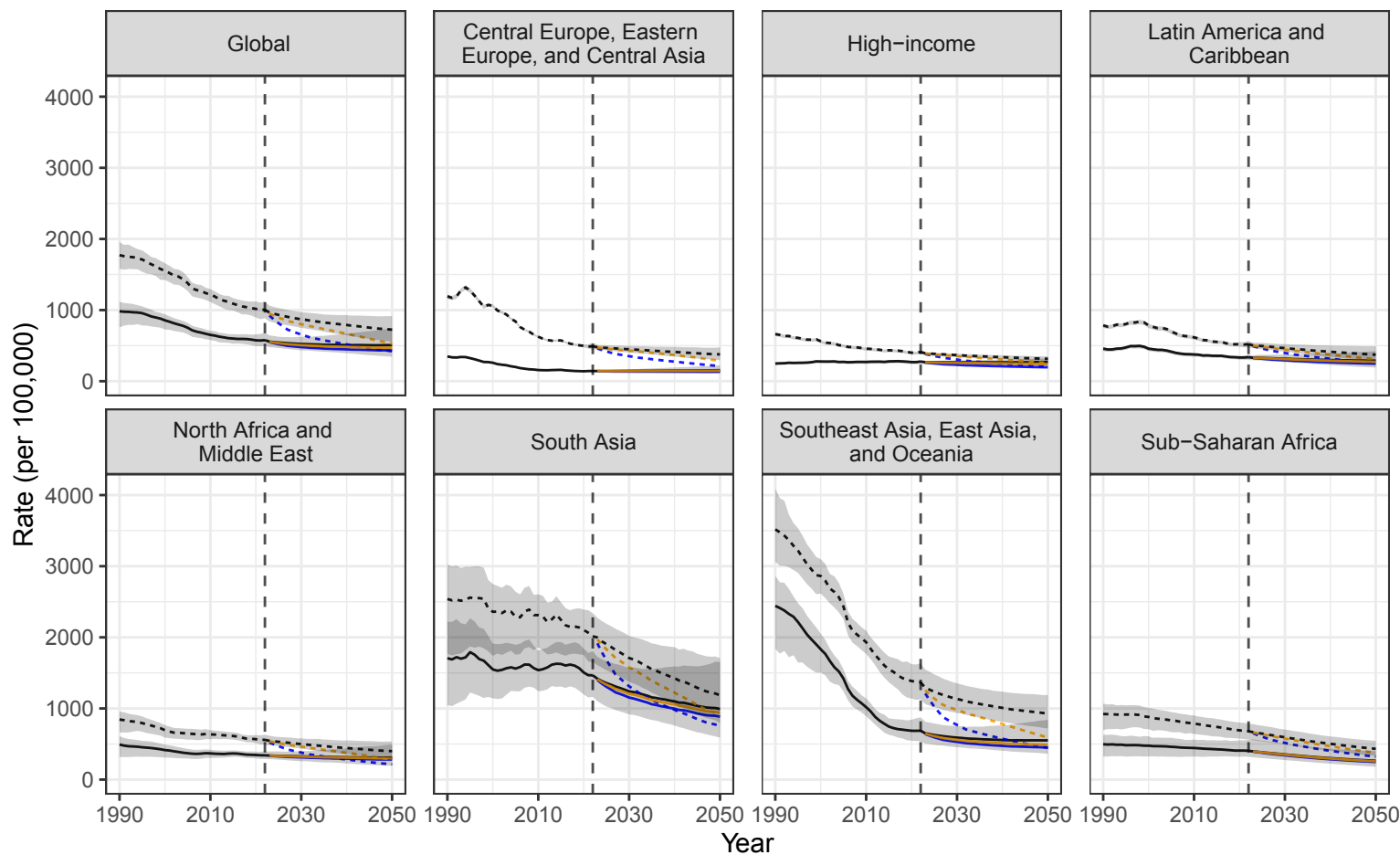
Past
 Reference
 Elimination - 2023
 Elimination - 2050
 Female
 Male

Supplementary Results Figure S4. Years of Life Lost (YLLs) by scenario, COPD

A. Number of YLLs, all ages

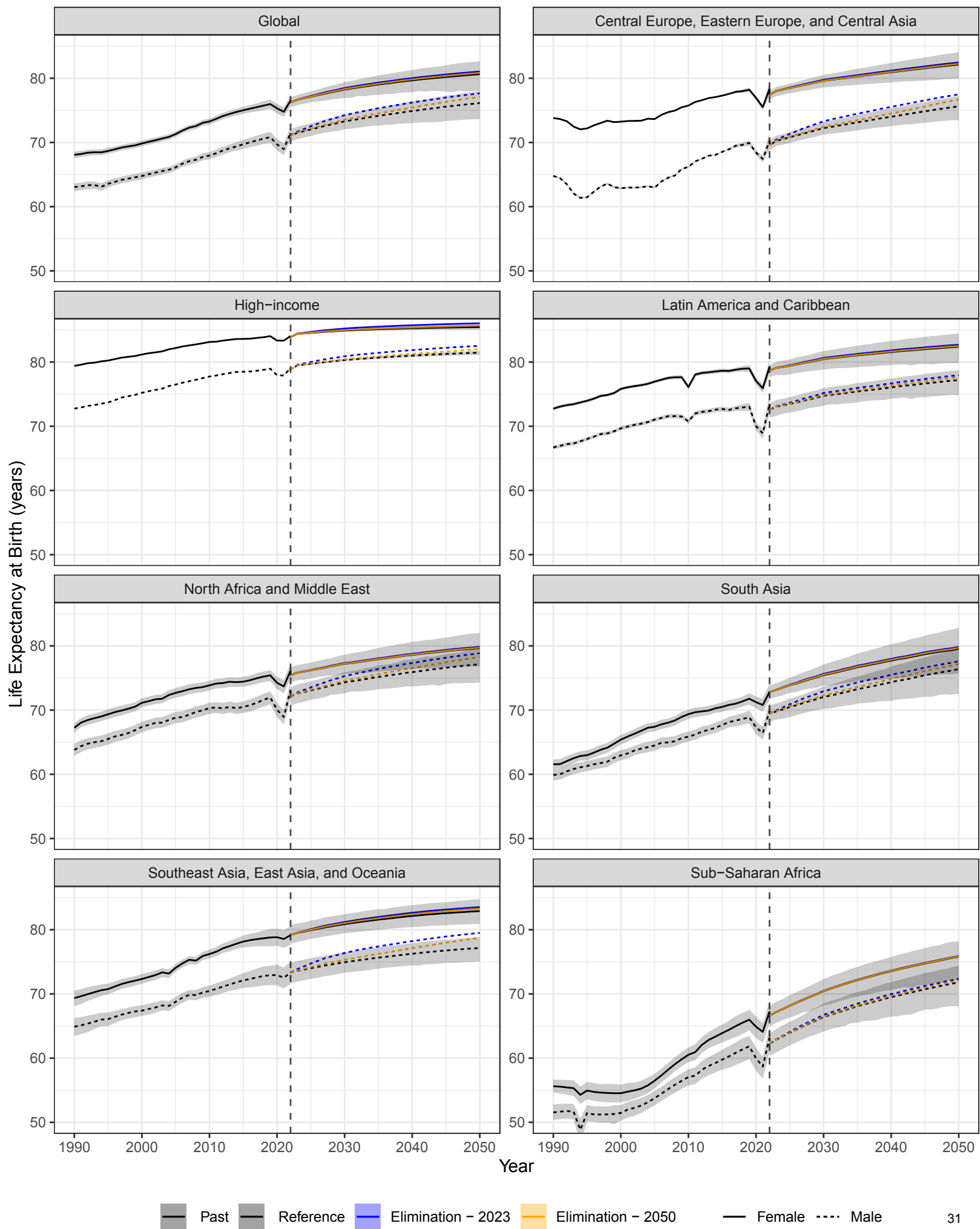


B. Age-standardized rate of YLLs

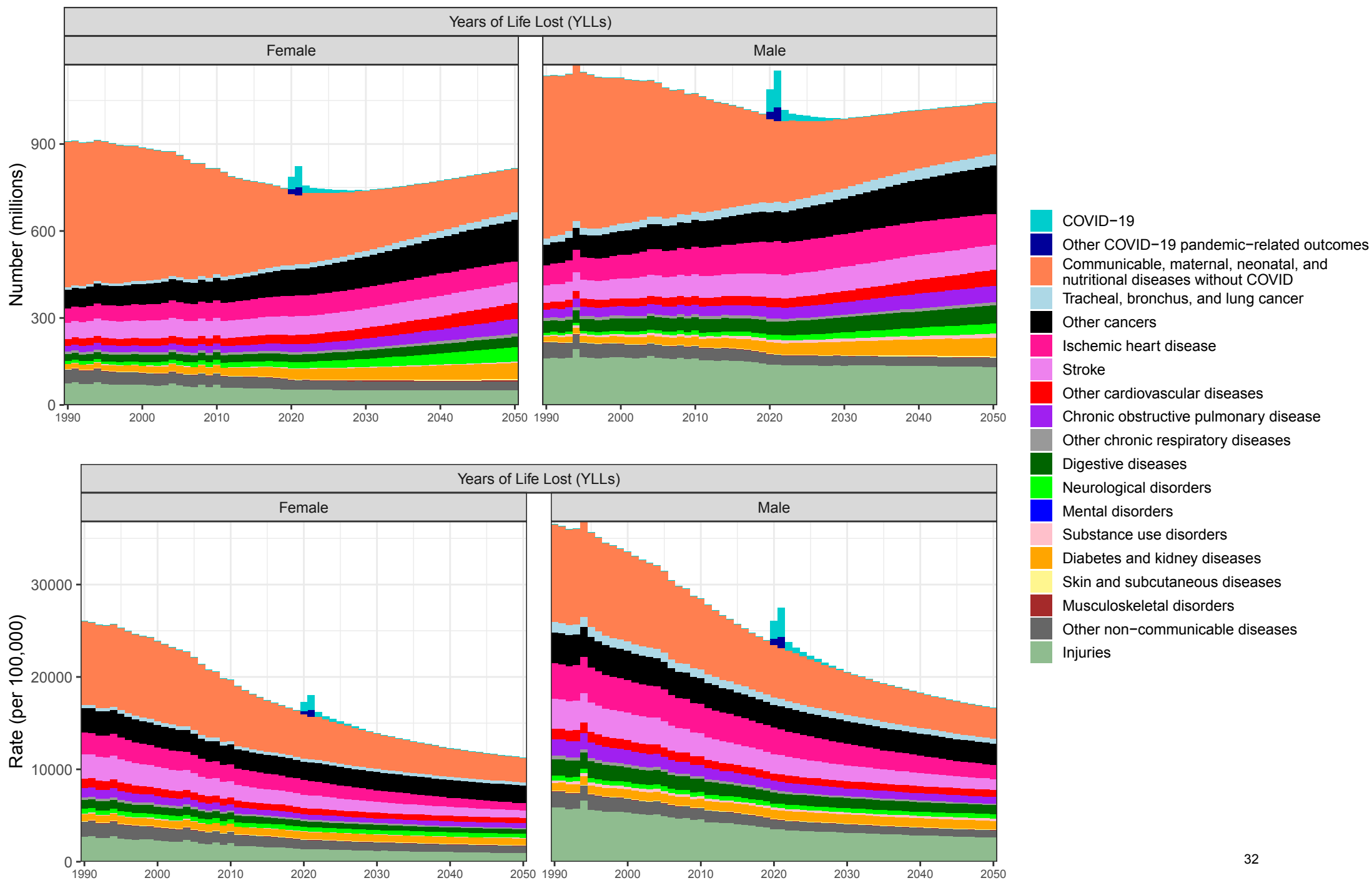


Past
 Reference
 Elimination - 2023
 Elimination - 2050
 Female
 Male

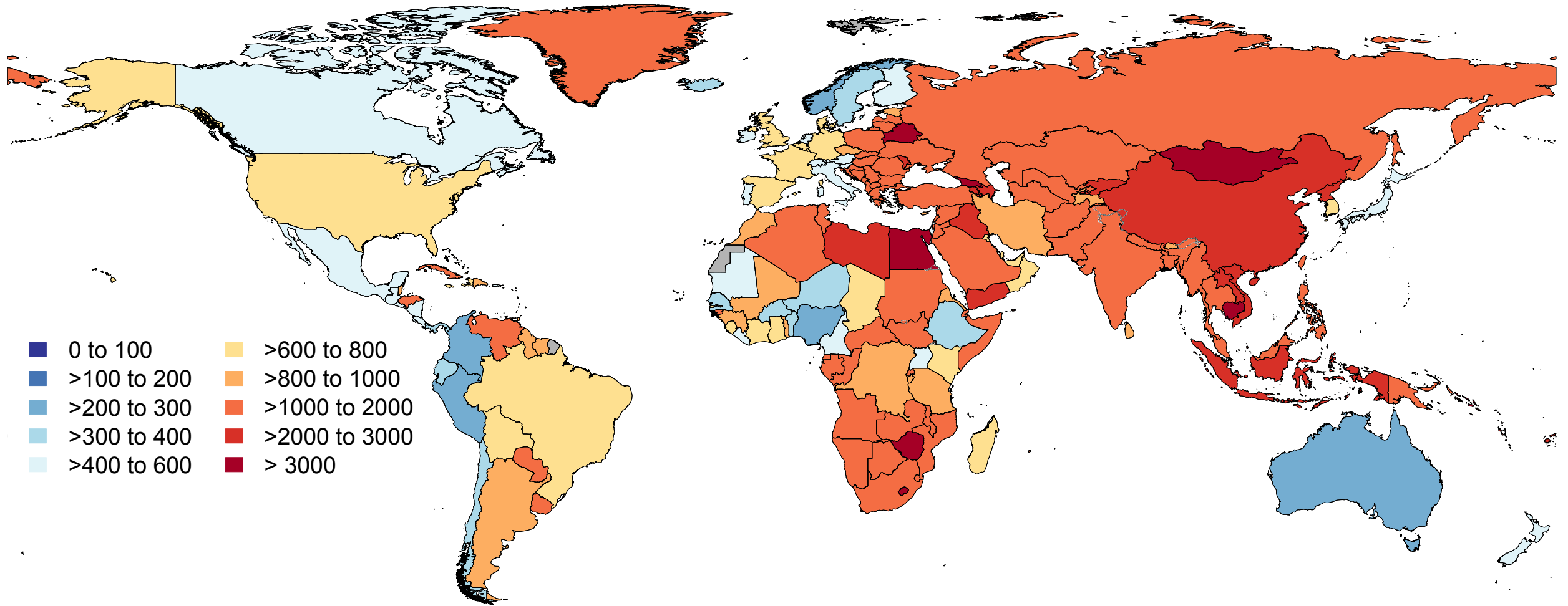
Supplementary Results Figure S5. Life expectancy at birth by super-region, sex, and scenario



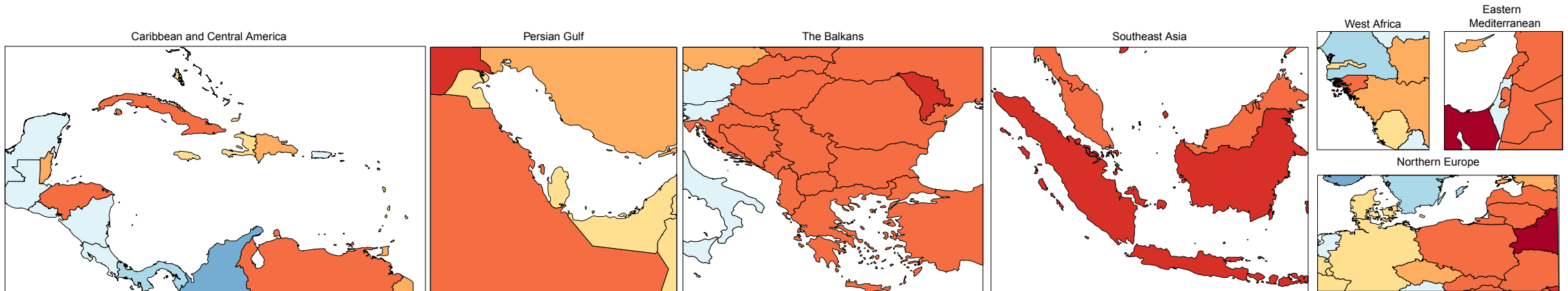
Supplementary Results Figure S6. Global YLLs under Reference scenario



Supplementary Results Figure S7. Difference in cumulative age-standardised rate of YLLs under Elimination-2023 scenario compared to Reference scenario, 2022 to 2050 (per 100,000), Males



- 0 to 100
- >100 to 200
- >200 to 300
- >300 to 400
- >400 to 600
- >600 to 800
- >800 to 1000
- >1000 to 2000
- >2000 to 3000
- > 3000



Supplementary Results Figure S8. Difference in cumulative age-standardised rate of YLLs under Elimination-2023 scenario compared to Reference scenario, 2022 to 2050 (per 100,000), Females

