

Accepted Manuscript

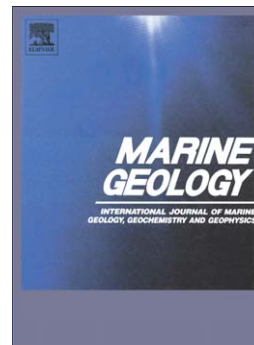
A depositional model for seismo-turbidites in confined basins based on Ionian Sea deposits

A. Polonia, C.H. Nelson, S. Romano, S.C. Vaiani, E. Colizza, G. Gasparotto, L. Gasperini

PII: S0025-3227(16)30089-5
DOI: doi: [10.1016/j.margeo.2016.05.010](https://doi.org/10.1016/j.margeo.2016.05.010)
Reference: MARGO 5464

To appear in: *Marine Geology*

Received date: 15 September 2015
Revised date: 12 May 2016
Accepted date: 16 May 2016



Please cite this article as: Polonia, A., Nelson, C.H., Romano, S., Vaiani, S.C., Colizza, E., Gasparotto, G., Gasperini, L., A depositional model for seismo-turbidites in confined basins based on Ionian Sea deposits, *Marine Geology* (2016), doi: [10.1016/j.margeo.2016.05.010](https://doi.org/10.1016/j.margeo.2016.05.010)

This is a PDF file of an unedited manuscript that has been accepted for publication. As a service to our customers we are providing this early version of the manuscript. The manuscript will undergo copyediting, typesetting, and review of the resulting proof before it is published in its final form. Please note that during the production process errors may be discovered which could affect the content, and all legal disclaimers that apply to the journal pertain.

A DEPOSITIONAL MODEL FOR SEISMO-TURBIDITES IN CONFINED BASINS BASED ON IONIAN SEA DEPOSITS

Polonia A. (1), Nelson C. H. (2), Romano S. (1), Vaiani S.C. (3), Colizza E. (4), Gasparotto G.(3), Gasperini L. (1)

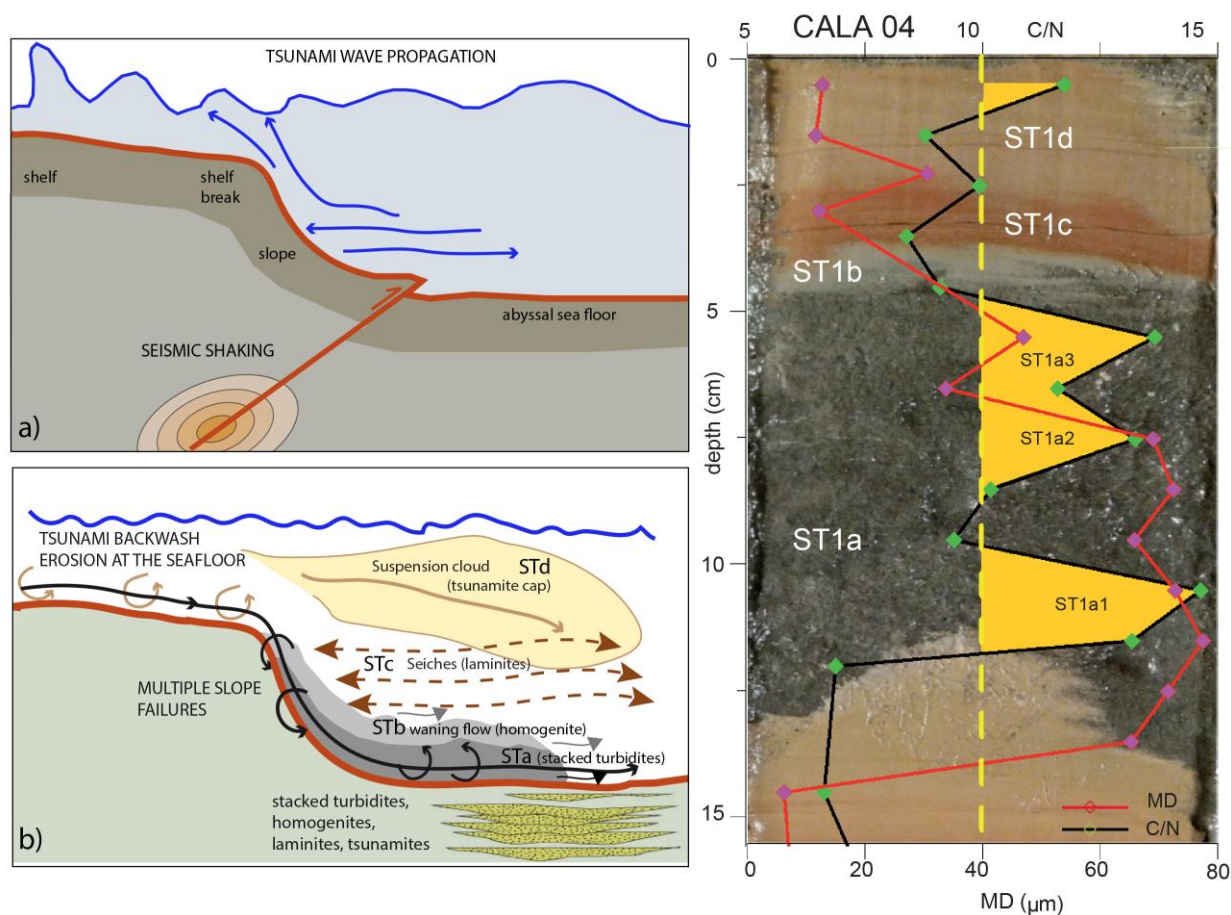
1- Institute of Marine Science CNR ISMAR-Bo, Via Gobetti, 101, 40129 Bologna, Italy

Tel: +39 051-6398888, e-mail: alina.polonia@ismar.cnr.it

2- CSIC, University of Granada, Spain

3- Dipartimento di Scienze Biologiche, Geologiche e Ambientali, University of Bologna, Italy

4- Dip. di Matematica e Geoscienze, Universita' degli Studi di Trieste



Abstract

This study investigates Ionian Sea seismo-turbidite (ST) deposits that we interpret to be triggered by major historic earthquakes and tsunamis in the Calabrian Arc. ST beds can be correlated with the AD 1908 Mw 7.24 Messina, AD 1693 Mw 7.41 Catania, and AD 1169 Mw 6.6 Eastern Sicily earthquakes while two previously unknown turbidites might have been generated by the AD 1818 Mw 6.23 Catania and AD 1542 Mw 6.77 Siracusa earthquakes.

Textural, micropaleontological, geochemical and mineralogical signatures of STs reveal cyclic patterns of STa, STb, STc and STd sedimentary units for each earthquake with an associated tsunami. The STa unit contains multiple ST stacks with different mineralogy, geochemistry foraminiferal assemblages and sedimentary structures that are deposited from synchronous multiple slope failures and turbidity currents. The STb homogenite graded mud unit overlying the STa unit is deposited by the waning flows of the multiple turbidity currents that are trapped in the Ionian Sea confined basin. The STc laminated and marine-sourced unit results from seiche of the confined water mass that appears to be generated by earthquake ruptures combined with tsunami waves. The STd unit is a *tsunamite cap* deposited by the slow settling suspension cloud created by tsunami wave backwash erosion of the shoreline and continental shelf. This tsunami process interpretation is based on the textural gradation of the upper unit and a more continental source of the tsunamite cap which includes C/N >10 and the presence of inner shelf foraminifera with a lack of abyssal species. This interpretation is in agreement with the lack of a tsunamite cap for the turbidite likely linked to the AD 1542 historic earthquake that is not associated with a tsunami. The new sedimentologic criteria identifies the final seiche and tsunamite cap deposits of STs and provides a model that can now be tested in other locations to better understand the different depositional processes of seismo-turbidites in confined basins.

1.0 - Introduction

Earthquake geology in underwater environments is a widely applied method used to reconstruct paleoseismicity back to pre-historical times in many different active tectonic settings, both in lake (Strasser et al., 2013, Moernaut et al., 2014; Howarth et al., 2014) and marine basin floors (Patton et al., 2015 and references therein).

The abyssal plain in the Ionian Sea is a good site for turbidite paleoseismological studies because river floods and/or prodeltaic failures do not affect this area (Figure 1). Also there are detailed historical earthquake catalogues, that can be linked to the specific turbidite units in the uppermost part of the sedimentary sequence.

The term “seismo-turbidite”, here indicated as “ST”, was first introduced by Mutti et al. (1984) to describe “*repetitive turbidites deposited in highly mobile basins*” with particular reference to the Apennines. In the same year, Kastens (1984) introduced the term “*marine paleoseismology*” when studying turbidite and debris flow deposits in the outermost Calabrian Arc accretionary complex and searching for distinctive earthquake-emplaced sedimentary structures. In her study, the Ionian deep sea was described as an ideal site for testing this approach, because of the long interval of deposition with little influence from river inputs. In addition, the abyssal plain is located between two active subduction systems, the mega-thrust sources of the Hellenic Arc, and the closer Calabrian Arc, where tectonic activity and resulting earthquakes are the “normal” catastrophic events that deposit sediment in the 4 000 m deep basin (Polonia et al., 2013a; 2013b; 2016a).

Radiometric and short-lived radionuclide ages are available for the most recent turbidite sequences, that were sampled by gravity coring in the Ionian Sea. These ages have been used to generate a chronology of turbidite sedimentation associated with earthquakes along the Africa/Eurasia convergent margin (Polonia et al., 2013a; 2013b; 2015; 2016a). The chronology

provided by high resolution radiocarbon ages of pelagic sediment layers and chronostratigraphic ages based on sedimentation rate, has been correlated with the historical earthquake catalogue. This indicates a match between turbidite emplacement time and the major historic earthquakes in AD 1908, 1693 and 1169 (Table 1). We summarize methods and main results of the previous and present age studies in Supplementary SM1.

Although the AD 1908, 1693 and 1169 earthquakes have been correlated with STs, some important issues about turbidite generation in the Ionian Sea remain to be resolved. The three above historic earthquakes which triggered turbidity currents are all associated with tsunamis (Tinti et al., 2004), although it is not clear how the tsunami wave contributed to sediment remobilization and whether the tsunamis were generated by seafloor ruptures on the fault planes, or by submarine slope failures triggered by seismic shaking. For example, the huge tsunami of the most recent and best known event in the region, the AD 1908 Messina earthquake, caused about 11 m of run-up and tremendous devastation on the coasts of Sicily and Calabria, with tens of thousands of lives lost (Omori 1909; Platania, 1909; Baratta, 1910; Tinti et al., 2004). However, if we consider the proposed fault sources for earthquakes, only one meter of such run-up could be explained by fault rupture (Okal and Synolakis, 2004); the effect of submarine landslides need to be invoked to account for the AD 1908 high tsunami run-up (Tappin et al., 2008; Billi et al., 2009; Favalli et al., 2009; Ridente et al., 2014). The detailed analysis of the AD 1908 ST layer in this paper provides insights on the ST generation, sediment sources and turbidity current pathways, and information on the general issue of submarine landslide vs. fault rupture in generating tsunamis.

The 11 January AD 1693, Mw 7.41 Catania earthquake, the strongest recorded in Italy, is part of a sequence of earthquakes and triggered the deposition of a thick ST in the abyssal plain. However, the source(s) of the AD 1693 earthquake(s) is/are still highly debated (see section 3.0 and Polonia et al., 2012; 2013a for a review). The detailed analysis of the correlative ST may provide

useful information about these sources and relative contribution from each individual earthquake of the AD 1693 seismic sequence.

Another key issue in ST studies is evaluating the contribution of tsunami wave generation related to the deposition of STs. The catastrophic 2004 Sumatra and 2011 Tohoku earthquakes triggered devastating tsunamis whose effects have been studied using the state-of-the-art methods applied to earthquake geology (Arai et al., 2013; Ikehara 2014a; 2014b; Patton et al., 2013; 2015; Sumner et al., 2013, Goldfinger et al., 2014). Associated STs have been identified, some of which could have been deposited by tsunami backwash (Arai et al., 2013).

Only two deep-sea “tsunamite” STs have been proposed to date. One is the thick (up to 25 m) Homogenite/Augias turbidite in the Ionian Sea (Kastens and Cita, 1981; Polonia et al., 2013b; 2016a), and the second are some centimeter thick deposits triggered by the 2011 Tohoku-Oki earthquake and tsunamis (Arai et al., 2013; Ikehara, 2014a, 2014b; McHugh et al., 2016). However, no detailed studies were performed on these deposits to unravel similarities and/or differences between tsunamis-triggered turbidites and turbidites triggered by direct earthquake shaking (Nelson et al., 2012; Gutiérrez-Pastor et al., 2013).

In this study we use three gravity cores (CALA 04, CALA 05 and CQ14_02), selected among a larger dataset, for a multi-proxy study to characterize each ST unit. Two additional cores (CALA 06 and CALA 07) are used for turbidite correlation. Our multi-proxy approach helps to unravel the relative contribution of seismic shaking (sediment failures, MTDs, turbidity currents e.g. Van Daele et al., 2014) and tsunami wave processes (overwash surges, backwash flows, turbidity currents, basin seiching e.g. Shiki and Cita, 2008; Pattiaratchi and Wijeratne, 2009; Hilbe and Anselmetti, 2015) that deposit abyssal plain STs and provide criteria to decipher processes for STs elsewhere.

2.0 - Geological setting

In the western Ionian Sea margin the crust of the African plate is being subducted beneath Calabria (Figure 1). Plate convergence is accommodated along the outer deformation front (i.e., the plate boundary) that marks the transition from the 4 000 m deep abyssal plain and the accretionary wedge that constitutes the continental slope. The accretionary wedge consists of: i) the frontal wedge made up of evaporites, whose deformation produces confined sedimentary basins; and ii) the inner wedge, with steeper slopes and submarine canyons which feed wider perched basins and slope terraces (Figures 1 and 2) (Polonia et al., 2011). High uplift rates (up to 2 mm/yr) of the coastal mountains are the shallow response to mantle upwelling at edges of the narrow and retreating slab (Faccenna et al., 2011), and result in enhanced sediment discharge onto the continental shelves. A number of active deformation belts, parallel and orthogonal to the trench, control the physiography of the margin and the sediment dispersal (Figure 1).

Bathymetric maps and previous studies on active faults in the Ionian region show a strong interplay between structural development, location and continuity of canyon systems (Figure 1). Three main tectonic features, which segment the continental margin (i.e. the Malta escarpment, the Alfeo-Etna fault system and the Ionian fault), control the paths of major canyons (Polonia et al., 2016b). The Alfeo-Etna fault, a lithospheric transtensive fault, marks the boundary between two different canyon systems. To the west of the fault, canyons from the Mt. Etna region (N.1 in Figure 1) connect with the steep and short canyons crossing the Malta escarpment and continue at its base before reaching the abyssal plain. Some of the canyons from the Messina Strait region connect with the western canyons located north of the Alfeo seamount (Figure 1). To the east of the Alfeo-Etna fault a number of anastomosing canyons from the Messina Strait and southern Calabria region reach the slope terrace located at about 3,000 m of water depth (canyon system N. 2 in Figure 1). Southeast of the slope terrace, the canyon systems do not continue due to the low

topographic gradient of the evaporite-bearing frontal wedge (taper angle less than 2°) and the presence of a rough topography made up of structural highs and depressions (Figure 1).

Uplifting coastal mountains in Calabria and northeastern Sicily combined with the recent occurrence of Mediterranean tropical-like cyclones (Miglietta et al., 2011) make the Ionian Sea prone to river floods and hyperpycnal flows (Casalbore et al., 2011) that need to be taken into account as potential triggering mechanisms for turbidity current generation. This issue becomes significant given the close proximity of Calabrian canyon heads to the shoreline during highstand conditions of sea level.

The purpose of this paper is to carefully examine the sedimentologic characteristics of the Ionian Sea turbidites that are correlated with historic earthquakes, so that we can define the sedimentary processes that are related to the earthquake generation and help to provide criteria that distinguish seismo-turbidites from turbidites generated by numerous other processes such as river flood, hyperpycnal flows, storms, and random slope failures.

3.0 – Seismicity

Eastern Sicily and southern Calabria bear a historical record of destructive earthquakes often associated with tsunamis (Rovida et al., 2011; Tinti et al., 2004). In the study area, historical earthquakes with $M_w > 5.8$ for the last 1000 yrs include the AD 1908, 1907, 1818, 1783, 1693, 1542, 1169 and 1125 earthquakes (Table 1). Despite the availability of a detailed earthquake catalogue (Rovida et al., 2011), the source parameters of most earthquakes are still debated, and controversial interpretations exist especially for the earthquakes that may have been generated offshore, or along faults that extend into the submerged portion of the Calabrian Arc subduction system.

On 28 December 1908, a catastrophic earthquake (Mw 7.24) resulted in the almost complete destruction of Messina and Reggio Calabria. Within minutes after the earthquake, a tsunami with a maximum observed run up of about 11 m hit the coasts of Calabria and Sicily and caused 60 000 deaths (Boschi et al., 2000). Although it is generally agreed that the earthquake was the result of normal faulting in the Messina Strait area, there are still uncertainties about specific location and throw of the causative fault (Pino et al., 2009 and references therein).

The AD 1693 earthquake hit eastern Sicily, with a strong seismic sequence starting on 9 January (Mw=6.21), and a main shock on 11 January, with an estimated magnitude of Mw 7.41 (Rovida et al., 2011). This is the strongest earthquake recorded in the study area, and caused over 60 000 deaths in eastern Sicily (Tonini et al., 2011). However, the identification of a possible causative fault plane remains highly uncertain.

Very little information exists for the 4 February 1169 (Mw 6.6) earthquake, which did strike Eastern Sicily. The earthquake destroyed Catania, although it is not possible to reconstruct in detail the extent of damages in the surrounding areas (Boschi et al., 1997).

Very scarce information is available for the 1542 event, but among earthquakes with Mw > 5.8, it is not associated with a reported tsunami. For historical earthquakes, which could have affected the study region, more data is reported in the catalogues (Rovida et al., 2011).

4.0 - Methods

Chirp-sonar profiles were collected using a TELEDYNE-BENTHOS Chirp II system, 3-7 KHz operating frequency, equipped with hull-mounted transducers (15 in total). Chirp-sonar data were digitally sampled and stored in SEG-Y files. Quality-check and data processing, which included filtering and amplitude equalization, as well as statics and positioning correction, was performed

onboard using the open ISMAR-CNR software SeisPrho (Gasperini and Stanghellini, 2009). Swath-bathymetry was collected using a SIMRAD 710 Multibeam echosounder.

Cores were collected during two cruises, CALAMARE08 (CALA 04, 05) and CALAQUAKE14 (CQ14_02), carried out onboard of R/V Urania in 2008 and 2014, respectively. During CALAMARE08 a 1.2 ton gravity corer was employed, with coring pipes 6 m long, while during CALAQUAKE14 cores were collected using a 2.3 ton CP20 piston corer, with coring pipes 10 m long.

Coring sites were selected through analysis of high resolution Chirp-sonar data, combined with bathymetric maps, which characterized tectonic, oceanographic and depositional settings at each core location (Figures 1 and 2). We selected basin depocenters hundreds of kilometers from the coast to reduce influence by river inputs and sites with reduced sedimentation rates in order to get a longer time span. The cores analysed in this work represent different bathymetric settings (core CALA04: open abyssal plain, core CALA05: confined basin close to the abyssal plain and CQ14_02: slope terrace) (Figure 1).

The cores sections were analyzed through a multi-proxy approach involving sedimentology, physical properties, XRF core scanner, organic matter, micropaleontology and mineralogy.

Grain size for cores CALA 04 and CALA 05 was analyzed with a sampling rate of 1 cm over the entire studied section. Sediment texture analyses were performed through the Laser Diffraction Particle Size Analyzer Beckman coulter LS-230, on the 0.04-2000 μm fraction. Core CQ14_02 was subsampled with a sampling rate from 1 to 12 cm depending on visual characteristics. Grain size analyses were performed by laser MALVERN Mastersizer 2000 (Hydro 2000S), size range from 0.02 to 2000 μm fraction. Results were classified according to Friedman and Sanders (1978) grain-size scale.

High resolution Magnetic Susceptibility (MS) was acquired with a core log system (Bartington model MS2, 100 mm loop sensor) and acquisition performed with a sampling interval of 0.5 cm.

X-Ray Computer Tomography (CT) was performed on all cores. Core sections were scanned by a medical CT system under X-Ray energy of 120 KV and pitch of 0.3. The final images have a voxel size of $118/512 \text{ m}^3$ and slice thickness of 1 mm. The intensity of the transmitted X-Ray beam is strictly related to the density (Duliu, 1999), and is expressed as CT number (Hounsfield unit).

The chemical composition of core CALA 05 was determined by using the Avaatech XRF-core scanner under two different settings (10 and 50 kV). Measurements were performed every 1 cm along the whole core. Data were plotted after being normalized with Ti, and Zr was normalized to Rb.

A total of 151 samples were analyzed for total organic carbon (TOC). Analyses were performed on acidified sediment (HCl, 1.5M) to remove the inorganic fraction. Total Carbon (TC) and total nitrogen (N_{tot}) were determined on untreated sediments. Analyses were made with a Finnigan DeltaPlus mass spectrometer directly coupled to a FISIONS NA2000 Element Analyzer via a CONFLO interface for continuous flow measurements. TOC and N_{tot} contents have been reported as weight percent (wt%). C/N ratio was calculated as molar ratio between TOC% and $N_{\text{tot}}\%$ ($14/12 \cdot \text{TOC}\% / N_{\text{tot}}\%$). The accuracy, calculated on atropine analyses, is ± 0.61 and $\pm 0.11\%$ for carbon and nitrogen, respectively, while precision is 2.45% and 1.92%.

Analyses of planktonic and benthic foraminifera were performed on 141 samples (49 from CALA 04, 23 from CALA 05 and 69 from CQ14_02), and were integrated with previously published data on CALA 04 and CALA 05 (Polonia et al., 2013a). All samples, of about 3-8 gr of dried sediment, 0.5-1.5 cm thick, were dried at 44 °C for 24 h, weighed, soaked in water, wet sieved through sieves of 63 μm , dried and weighed again. Foraminiferal analyses were carried out on the

size fraction $>63 \mu\text{m}$. Concentration of benthic foraminifera was estimated in a split portion of 0.03 gr of dry residue $>63 \mu\text{m}$, or on the entire sample if the size fraction $>63 \mu\text{m}$ was less than 0.03 gr. The identification of foraminifera is supported by selected key papers such as Banner and Blow (1960), Cita et al. (1974), AGIP (1982), Kennett and Srinivasan (1983) and Rasmussen (2005). Ecological significance of the benthic species was mainly inferred from previous studies in the Mediterranean Sea (Blanc-Vernet, 1969, Parisi, 1981, Murray, 1991, 2006, and Rasmussen, 2005) (Table 2).

Mineralogical analyses were carried out on selected samples to define sediment composition and sources using Polarized Light Microscope (PLM), immersion liquids (RI = 1.60) and scanning electron microscope with EDS attachment. PLM allowed the identification of the main components (minerals and plant fragments), and SEM/EDS was used to identify minerals and estimate proportions among components.

Radiocarbon ages obtained in previous studies were integrated with new ages to define a chronological framework for the turbidites of this study (Supplementary Material SM1). To estimate emplacement time of two newly discovered turbidite beds, three high-resolution radiocarbon ages were obtained on planktonic foraminifera sampled from the hemipelagic sediment that brackets turbidite beds in core CQ14_02 (Table 3). Radiometric ages have been used for age modelling in core CQ14_02 through the OxCal software (Bronk Ramsey, 2013) following the same procedure described in Polonia et al. (2013a) and SM1. The input parameters to generate the age model were the uncalibrated ^{14}C ages and respective ΔR integrated with ages of ST1, ST2 and ST3 (i.e. AD 1908, 1693 and 1169) with their corresponding corrected depth as deduced from previous studies (Polonia et al., 2013a and SM1). The regularity of the sedimentation rate is determined by the k parameter with the higher values of k reflecting smaller variations in sedimentation rate (Bronk Ramsey, 2008). For our purposes we chose $k=3.0$ because we assume

that the pelagic sedimentation rate has been constant during the last 1500 yr in the study area (Polonia et al., 2013a and 2015). The model finally calculates the age of each corrected depth corresponding to the turbidites of interest and generates the 95.4% probability age ranges (2σ). In conjunction with ^{14}C dating, pelagic sediment thickness has provided the average time-intervals between two successive turbidite beds ("H method" of Gutiérrez-Pastor et al., 2009); correlation with the time elapsed between the proposed triggering earthquakes refined age results. Additional details on ^{14}C data and age modelling are described in Supplementary SM1.

5.0 – The sedimentary record of turbidites related to historic earthquakes

Previous multidisciplinary studies of cores CALA 04 and 05 provided proxies to distinguish between pelagic sediment and turbidites and three most prominent turbidite beds in the upper sedimentary sequence were correlated to the AD 1908 Messina, AD 1693 Catania and AD 1169 Eastern Sicily earthquakes (Polonia et al., 2013a and SM1). We label these three turbidite sequences as seismo-turbidites (ST), because we interpret that they have been generated by the three historic earthquakes. Each of the historic STs is characterized by a cyclic pattern of four units that appear to mark different phases of depositional processes. Building on the previous observations, in this study we introduce new data from CT scans, high-resolution magnetic susceptibility, texture, micropaleontology, TOC and C/N, to characterize the four units of the STs. Our objective is to understand the quake-generated sedimentary processes of the ST units.

5.1 – Core CALA 04 (3845 m water depth).

Core CALA 04 is located in the abyssal plain of the western Ionian Sea (Figure 2a) that is fed directly by the westernmost canyon, which extends from the Mt. Etna region downslope along the base of the Malta escarpment (N. 1 in Figure 1). The escarpment is cut in this region by a dense network of short and steep incisions. This Malta Escarpment canyon system intersects one of the

three submarine cables (about 60 km to the southeast of the Sicilian coast) that were broken during the AD 1908 Messina earthquake (Figure 1). A detailed description, top to bottom, of the STs observed in the uppermost section of core CALA 04 follows (Figure 3).

5.1.1 - The AD 1908 ST (ST1) is 13 cm thick and is made up of four units.

Unit ST1a (black, 5-13 cm): CT scan images and CT number provide high-resolution information on the fine structure of this turbidite bed, which is not a single unit. Unit ST1a has three different parts shown by high but variable CT number, TOC, C/N and mean grain size (MD) (Figure 3). The lowermost sandy sub-unit ST1a1 (9 to 13 cm) is characterized by low TOC and very low N_{tot} resulting in a high C/N, which indicates a more continental input. The upper two sand/silt sub-units (ST1a2: 7-9 cm and ST1a3: 5-7 cm) have low TOC and low N resulting in a C/N >10, which again indicates both are dominated by continental inputs. We call the ST1a unit a stacked seismo-turbidite (stacked ST sensu Nelson et al., 2012; 2014) because it has three separate turbidite stacks (ST1a1, ST1a2, ST1a3) each with different grain size gradation, sedimentary structures, and composition.

Foraminiferal assemblages in ST1a are size-selected and consist of a low amount of small-sized (<125 micron) planktonic specimens, while rare benthic species are indicative of a wide range of bathymetry and include inner shelf fauna. The finer-grained upper part lacks inner shelf fauna.

Unit ST1b (grey, 4-5 cm): This unit shows an increase in TOC and N_{tot} , and low C/N (more marine sensu Mayer, 1994) (Figure 4). Only taxa of wide bathymetric range are present in foraminiferal assemblages.

Unit ST1c (dark orange, 2-3 cm): It is marked by mm-thick white laminae associated with a decrease in grain size, TOC and C/N that is slightly more marine (Figure 4).

Unit ST1d (light orange to beige, 0-2 cm): It is associated with a sand peak, deep water forams only in the basal part, the presence of inner shelf forams and high values of C/N, all suggesting a more continental input.

5.1.2 - The AD 1693 ST (ST2) is 31 cm thick and is made up of four units.

Unit ST2a (black, 33-45): The high resolution CT scan sedimentary structures, MS and TOC analysis suggest that this ST2a unit is represented by two stacked STa sub-units (40-45 cm and 33-40 cm), although the sand % and MD show 3 faint sand gradations (Figure 3). The basal part of the lower stacked sub-unit ST2a1 is characterized by parallel lamination and at its base it is marked by a sharp increase in TOC and high values of C/N, which decrease upwards. The sedimentary structures of the CT scan reveal a lower Bouma Tb flat laminated unit (43-45 cm) overlain by an upper Bouma Tc cross-laminated unit (40-43 cm). The upper sandy stacked sub-unit ST2a2 shows a basal flat laminated Bouma Tb from 37 to 40 cm, with an increase in TOC and C/N. The base of the second stacked turbidite is marked by a strong peak in MS and an increase in sand content which is shown by sand % and MD. All of the aforementioned data from 37 to 40 cm confirm the beginning of a new stacked sub-unit ST2a2. The Bouma Tb basal part is overlain by Bouma Tc cross-laminated sand that grades upward from 33-37 cm as shown by MS and MD data. The overall ST2a unit shows low values of TOC, similar to turbidite ST1a. Foraminiferal assemblages are characterized by a high amount of mainly planktonic specimens, a concentration of inner shelf and a wide bathymetric range of benthic species (Figure 3)

Unit ST2b (grey, 19-33 cm): This unit shows a gradual decrease in grain size associated with an increase in TOC and N_{tot} , while C/N shows small fluctuations always lower than 10 (Figure 3). The appearance of ST2b in the core photo suggests a homogenous mud that has been called homogenite or unifite (Kastens and Cita, 1981; Stanley, 1981). However, the CT scan shows faint lamination, and the grain size plus MS data reveal a continuous textural grading of a turbidite

mud, which is typical for homogenite/unifite deposits (Tripsanas et al., 2004). Foraminiferal abundance shows a substantial decrease in this unit. Benthic species are mainly indicative of a wide bathymetric range and inner shelf forams are present throughout the layer.

Unit ST2c (orange, 16-19 cm): It is marked by a basal 1 cm thick dark orange layer with mm-thick white laminae, no textural grading, a decrease in TOC and N_{tot} , and a lack of benthic foraminifera (Figure 3).

Unit ST2d (light orange to beige, 14-16 cm): This unit is homogenous with no evident internal layering in the CT scan, but the texture shows a slight finer gradation upward. Rare benthic foraminifera are found from a wide bathymetric range.

5.1.3 - The AD 1169 ST (ST3) is 21 cm thick and is made up of four units.

Unit ST3a (black, 57-69 cm): It is not a single sediment unit but has two stacked STa turbidite sub-units. The lowermost sub-unit ST3a1 extends from 66-69 cm and is characterized by a silt grain size and apparent Bouma Td flat lamination (i.e. fine grain size), MS with two slightly coarser grain size increases, and C/N ratio of about 10 (Figure 3). The upper sandy silt sub-unit ST3a2 from 57 to 66 cm exhibits 3 coarser grain size increases shown by MS and MD, as well as higher TOC and C/N ratios compared to the lower sub-unit ST3a1. The upper sub-unit ST3a2 is characterized by a complex structure with a possible lower Bouma Tc cross-laminated (obscured by bioturbation?) overlain by a Bouma Td set of undulating laminae and mud chips. The overall ST3a unit shows high values of TOC opposite to turbidites ST1a and ST2a. The high C/N ratios suggest a more continental origin of the organic matter. Benthic foraminiferal assemblages show a wide range of bathymetric assemblages that include inner shelf fauna in the upper part of ST3a2, while the basal part of ST3a1 has no inner shelf fauna, which again confirms the two stacked sub-units.

Unit ST3b (grey to beige, 53-57 cm): It is a faintly laminated, graded homogenite turbidite mud that is similar in grain size and homogeneous nature to the ST2b and ST1b grey turbidite

muds. However, the ST3b unit exhibits a colour change from grey to beige, has lower TOC and lacks benthic foraminifera.

Unit ST3c (dark orange, 51-53 cm): This unit exhibits flat lamination in the CT scan, lacks significant grain size gradation and has low C/N ratios (Figure 3).

Unit ST3d (orange to beige unit, 48-51 cm): This unit is homogeneous without sedimentary structures, shows a silt peak at the base, and a fining upward trend with a gradational increase in clay content, TOC, N_{tot} and higher C/N ratios. Deep-sea benthic foraminifera are absent and inner shelf species are present in ST3d, whereas shelf species are absent in ST3b and ST3c (Figure 3).

5.2 – Core CALA 05 (3814 m water depth).

Core CALA 05 is located in a perched basin of the outermost accretionary wedge close to the abyssal plain but not directly connected to the canyon systems (Figures 1 and 2a). In general, the studied section of this core shows thinner basal sand units with a lower sand content (Figure 5).

5.2.1 - The AD 1908 ST (ST1) is 6 cm thick and is made up of four units.

Unit ST1a (black, 5-6 cm): The CT scan shows two peaks suggesting two stacked ST1a sub-units (Figure 5). The core photo also shows two dark sandier units (Figure 6b), however because of sample spacing, the resolution of the MS, textural and compositional data is not great enough to distinguish 2 sub-units. The basal sand is marked by a peaks in Zr and Ba, as well as low TOC and C/N. Foraminiferal specimens are size-selected and consist mainly of a low amount of small-sized (<125 micron) planktonic taxa and rare benthic, almost entirely represented by species indicative of a wide range of bathymetry, from outer shelf to slope.

Unit ST1b (grey, 4-5 cm): This homogenite silt unit has a thickness which varies from 1 to 2 cm (Figure 5) and MD shows a rapid decrease in grain size associated with an increase in TOC, N,

and C/N is <10 (Figure 6a). A few small-sized foraminifera are present, mainly planktonic and rare benthic species indicative of a wide range of bathymetry.

Unit ST1c (orange, 2.5-4 cm): It is marked by a sharp base and a transitional top, faint CT and mm-thick brown and white laminae associated with a slight decrease in TOC and C/N which suggests a more marine sediment source (Figure 6b).

Unit ST1d (light orange, 0-2.5 cm): Light orange to beige homogeneous sediments are associated with values of C/N > 10 and with an increase in Fe, Al and Mn, all of which suggest a more continental input (Figures 5 and 6). ST1c and ST1d are almost barren in foraminifera.

5.2.2 - The AD 1693 ST (ST2) is 13 cm thick and is made up of four units.

Unit ST2a (black, 19-21 cm): The high resolution CT scan, MS, TOC and C/N data suggest that this unit is represented by two stacked turbidite sub-units (19-20 and 20-21 cm), although the MD grain size resolution is not great enough to show this (Figures 5 and 6a). Each stack exhibits mm scale parallel laminations that probably represent Bouma Td sedimentary structures. The lower stacked ST2a1 sub-unit has lower TOC and C/N while the upper stacked ST2a2 sub-unit shows high TOC contents and C/N >10, which suggests a more continental source for the upper turbidite stack. ST2a1 is characterized by high Zr and Ba concentrations, which again suggest two different sources for the ST2a1 and ST2a2 sub-units (Figure 5). Foraminiferal assemblages are size-selected and consist mainly of a low amount of small-sized (<125 μm) planktonic taxa and rare benthic species, that mainly indicate a wide range of bathymetry, including inner shelf and abyssal taxa.

Unit ST2b (grey, 12-19 cm): The grey homogenite clayey silt exhibits faint parallel mm-thick laminae at the base and becomes homogeneous at its top (Figure 5). This unit shows a gradual decrease in grain size associated with an increase in TOC and N_{tot} in its upper part where a high value of C/N suggests a more continental input of organic matter. Foraminifera are rare and characterized mainly by small-sized planktonic species in association with benthic taxa indicative

of a wide range of bathymetry (shelf to slope). Abyssal (*Articulina tubulosa*) and inner shelf foraminifera are present only in the lower part of the unit.

Unit ST2c (orange, 11-12 cm): Unit ST2c is marked by a dark orange layer that exhibits faint laminations in the CT scan (Figure 6). This layer is associated with a decrease in TOC and C/N, which suggest a more marine provenance of the organic matter.

Unit ST2d (light orange 8-11 cm): This unit is associated with increased TOC and C/N values and higher values of Mn, Fe and Al, all of which suggest a more continental source of the sediment. ST2c and ST2d are almost barren in foraminifera with only rare planktonic and very rare benthic specimens indicative of wide range of bathymetry.

5.2.3 - The AD 1169 ST (ST3) is 21 cm thick and is made up of four units.

Units ST3a and ST3b (black-grey, 31-45 cm): The ST3 is much finer grained than the ST1 and ST2 of CALA 5, which results in more subtle changes in texture and composition to distinguish different parts of layer ST3. At the base of the layer, from 44-45 cm, the CT scan shows mm scale lamination and two coarser-grained peaks and this plus an MS peak correlative with the upper CT peak suggest that the two turbidite stacked sub-units make up the ST3a (Figure 5). Above the ST3a thin base, a thick ST3b homogenite silt is found from 31 to 44 cm. There are few compositional or faunal characteristics that distinguish it because there is no sand fraction and it is barren of benthic foraminifera with only small planktonic specimens present. The upper part of ST3b does show increased S, Ba and Mn content associated with an increase in Cl, which may suggest an increased water content.

Unit ST3c (orange, 30-31 cm): This entire unit exhibits higher CT numbers, although the grain size is similar to the underlying ST3b unit.

Unit ST3d (light orange, 24-30 cm): An increase in Fe and Al is located at the base of the ST3d unit, which is also associated with variations in values of TOC, N_{tot} , and higher C/N. ST3c and ST3d are substantially barren with only small planktonic foraminifera.

5.3 – Core CQ14_02 (3356 m water depth)

Core CQ14_02 was collected in a slope terrace, within a ponded closed basin at a canyon mouth (Figures 1 and 2b). This small basin is bounded to the east by a structural high and to the west by folds belonging to the outer accretionary wedge. This area is fed by canyons connected with the Calabrian and Sicilian shelves, and these canyons die-out in the flat region of the slope terrace without reaching the abyssal plain. Because of the containment caused by structural highs, this terrace setting results in the highest sand content, the maximum thickness of the turbidite beds, an expanded record of the STs and deposits that show other minor turbidite events.

The turbidite beds exhibit the same STa, b, c, d units as other core locations (black at the base, grey and orange to beige at the upper part), however these colours are not so distinct as in the other cores locations. In the uppermost 270 cm of the core, we observe five turbidite beds (Figure 7).

5.3.1 - The AD 1908 ST (ST1) is 134 cm thick and is made up of four units.

Unit ST1a (black, 22-134 cm): ST1a is about 112 cm thick and is marked by a sharp erosional base where the sand content increases abruptly to about 80% and then decreases rapidly to <50% at 64 cm (Figure 7). The basal ST1a exhibits parallel laminations and a gradually fining upward trend in the MD, which stops at about 104 cm bsf. At 104 cm, chaotic sediment structures with contorted sand lenses appear and are associated with a new input of higher sand and a coarser MD (Figure 7). The contorted sand bed continues from 104 cm to 60 cm with 4 sand peaks. From 22 to 60 cm, mm scale dark and light lamina are observed in the CT scan (Bouma Td related to the

upper sand sub-unit?), but these are pulled down several centimetres along the right side of the core barrel. The greater core disturbance related to coarser sand, the pulled down laminae from 22-60 cm, and the highly disturbed sediment at the top of the core above this, all suggest that severe coring disturbance has affected the core above 104 cm and that the STa unit is not an MTD.

In sum, two STa stacked turbidite sub-units (ST1a1: 104-134cm and ST1a2: 22-104 cm) appear to characterize the ST1a unit (Figure 7). The CT scan, TOC and N_{tot} (low for ST1a1 and high for ST1a2), C/N (>10 for the entire ST1a but higher for the upper turbidite stack ST1a2), MS, and grain size data also suggest there are two turbidite stacks with different compositions related to separate failure sources. Foraminiferal assemblages are dominated by planktonic taxa in association with benthic species indicative of a wide bathymetric range. Abyssal taxa are present only in a few samples in the middle of ST1a2 while inner shelf taxa are present in the upper part of ST1a1 and within the lower part of ST1a2 (Figure 7).

Unit ST1b (grey, 12-22 cm): This clayey silt homogenite shows a gradual decrease in grain size associated with low TOC, increased N_{tot} and C/N <10 (Figure 7). Foraminiferal assemblages include mainly planktonic taxa in association with rare benthic species that represent a wide bathymetric range.

An orange to beige unit is 12 cm thick and is marked by a slight increase in sand content (Figure 7). The unit is highly disturbed, however from 8 to 12 cm there may be a slightly darker unit with parallel laminae (ST1c) and another possible lighter orange unit above (ST1d), but no sedimentary structures can be defined. Foraminiferal assemblages are characterized by low number of specimens, mainly planktonic, with the occurrence of rare benthic species that represent a wide bathymetric range. A few abyssal foraminifera are present in the uppermost part of the unit close to the seabed (Figure 7).

5.3.2 - The T1/2 turbidite bed is 11 cm thick and made up of four units.

The T1/2 turbidite is an additional turbidite, that is not present in the other CALA 04 and 05 cores and that is found between the AD 1908 and AD 1693 STs. It is 12 cm thick and shows the same four units as in the other turbidite beds (black, grey, orange and beige) (Figures 7 and 8a). T1/2 is marked by a sharp sandy base (ST1/2a, from 141 to 145 cm) with two distinct sand peaks characterized by $C/N > 10$. The grey unit (ST1/2b, from 138 to 141 cm) shows a fining upward sequence. The upper orange unit shows a darker level (ST1/2c, from 136 to 138 cm), which exhibits mm-thick laminae (Figure 8a) while the light orange unit above it (ST1/2d, from 134 to 136 cm) is rather homogeneous. Foraminifera are rare and represented by small planktonic species; the sandy base also includes benthic species indicative of wide bathymetric range and the abyssal environment.

5.3.3 - The AD 1693 ST (ST2) is 54 cm thick and made up of four units.

Unit ST2a (black, 179-198 cm): Similar to other core locations, ST2a contains two stacked turbidite sub-units (ST2a1 from 179-188 and ST2a2 from 188-198 cm) that are shown by MD, MS and sand %. The ST2a1 exhibits possible faint cross lamination (Bouma Tc?) overlain by mm scale flat lamination (Bouma Td?) (Figure 7). The ST2a2 exhibits mm scale flat lamination throughout. C/N is > 10 for ST2a1 and is < 10 for ST2a2. Foraminiferal assemblages consist mainly of planktonic taxa in association with common benthic species that indicate a wide bathymetric range, including the abyssal environment. Inner shelf species are locally observed only in the upper turbidite stack.

Unit ST2b (grey, 151-179 cm): This clayey silt homogenite exhibits faint lamination and a gradual decrease in grain size. The TOC is rather constant throughout this unit while N_{tot} increases upwards providing a decrease in C/N to values < 10 . The observed foraminifera are mainly planktonic in association with rare benthic species that indicate a wide bathymetric range. Abyssal specimens are present in the lower part of the unit.

Unit ST2c (dark orange, 149-151 cm): This unit shows faint laminations.

Unit ST2d (light orange to beige, 144-149 cm): It is a homogeneous clayey silt unit. C/N and TOC do not show any variation relative to the units below. Foraminifera are rare and include only small-sized planktonic species.

5.3.4 - The T2/2 turbidite bed is 14 cm thick and made up of two units

The T2/2 turbidite has been emplaced between the AD 1693 and AD 1169 events and is not present in the CALA 04 and 05 cores. This bed differs from previously described turbidites because it does not have turbidite stack sub-units and lacks the STc and STd units. The base of this turbidite bed is not as sharp, the included units are not as clearly defined and transitions are more gradual compared with the other turbidites (Figure 8b). A single basal sandy silt unit extends from 206 to 212 cm, has classic simple fining up texture shown by the CT scan and MD, contains up to 10% sand, and exhibits faint lamination (Figure 7). Above the basal unit, a light grey to beige clayey silt unit is found from 198 to 206 cm. No darker orange unit with mm-thick laminae is present. Both TOC and N_{tot} show an increase at the base of the turbidite, which results in low C/N values, especially in the grey to beige unit. Foraminiferal assemblages include mainly planktonic taxa in association with rare benthic species in the lower part of the unit that represent a wide bathymetric range and the abyssal environment.

5.3.5 - The AD 1169 ST (ST3) is 46 cm thick and is made up of four units.

Unit ST3a (black, 226-259 cm): ST3a has a sharp base and parallel lamination and contains 2 sub-units shown by MD sand peaks from 251 to 259 cm (ST3a1) and another from 226 to 246 cm (ST3a2) which has a sandy silt tail extending to 226 cm (Figure 7). ST3a1 includes more benthic species than ST3a2, and inner shelf species are present in ST3a1. The different sub-units are associated with differences in composition (TOC, C/N, foraminifera) and these observations indicate that the ST3a unit consists of two sub-units as observed for core CALA 04.

Unit ST3b (grey, 220-226): It consists of a homogenous clayey silt with a slight upward increase in clay (Figure 7) and a decrease in sand contents. Foraminiferal assemblages consist mainly of small planktonic taxa in association with rare benthic species that indicate a wide bathymetric range.

Units ST3c and ST3d (from 218-220 cm and 213-218 cm): They show a homogeneous texture and exhibit some lamination but bioturbation has disrupted primary structures. Both units have rather constant TOC and N_{tot} values and low C/N. Foraminifera only include small-sized planktonic species and very rare benthic specimens indicative of wide range of bathymetry.

In core CQ14_02 we selected three ^{14}C samples within pelagic intervals in order to determine emplacement time for the new turbidite beds T1/2 and T2/2 (Figure 7 and Table 3). Age modelling through OxCal software (Bronk Ramsey, 2013) provides a representative set of possible ages for turbidites T1/2 and T2/2 that are respectively AD 1715-1909 and AD 1344-1632 (Figure 9).

6.0 – Processes generating Ionian Sea turbidites

Intense tectonic activity and dynamic topography of the Calabrian Arc produce a strong interplay between seismic shaking, sediment failures, turbidity currents and tsunami generation in the Ionian Sea. During historic times, episodic deposits on the basin floors are generated by earthquakes (Polonia et al., 2013a; 2013b; 2016a) but major issues that deserve further analysis include: i) the complexity of the sedimentary record and of the seismic sources; ii) the sensitivity of core location in linking individual deposits related to a specific earthquake; iii) the earthquake magnitude threshold in triggering mass flows; and iv) the relative contribution of seismic shaking and tsunami wave processes related to generation of STs. In addition, other triggers for turbidity currents besides earthquakes (i.e. random slope failures, storms, cyclones and flash-floods) need to be taken into account especially for those turbidites that do not show a large areal extent like

turbidites T1/2 and T2/2. We will discuss next, how our multi-proxy approach aimed at defining age, source and emplacement mechanism of each turbidite event, may give insights to address all these issues.

The deposition of turbidites can be linked to a number of different triggering processes (e.g. Piper and Normark, 2009; Talling et al., 2014) such as storms (Mulder et al., 2001), tsunamis (Kastens and Cita, 1981; Shanmugam, 2011; Polonia et al., 2016a), hyperpycnal flow (Mulder et al., 2003; Casalbore et al., 2011), gas hydrate destabilization (Rothwell et al., 1998), earthquakes (e.g. Adams, 1990; Nelson et al., 2000; Goldfinger et al., 2012) or a combination of these processes.

During the last decades tropical-like cyclones have occurred frequently in the Ionian Sea (Miglietta et al., 2011). Thus these storms may be considered as potential triggers for mass flows and turbidity current generation in the study region as has been suggested but not proven for typhoon floods off Taiwan (Carter et al., 2012). The dimension of the Ionian study area is also important in this regard, because we are dealing with a relatively small area with canyons only tens of km apart. This implies that one single cyclonic storm could have affected the entire study area and the principle of synchronicity usually applied in oceanic regions to unravel a seismic trigger (Goldfinger et al., 2003a; 2012) may not be valid here. However, available data suggest that a storm or flood trigger for our STs is unlikely and here we list major observations against this link.

Major storms occurred in the Ionian Sea in 1999, 2000, 2004, 2008 and the most intense one in 2012 with a minimum pressure of about 980 hPa (Miglietta et al., 2011). Our post-storm cores (e.g. CQ14_02) do not show any turbidite bed that could be related to the 2012 storm.

Flash floods also develop in the ephemeral streams that are found in the mountainous relief facing the Messina Strait region. These streams are characterized by a short length, extremely steep valleys and a high-energy hydraulic regime during flash floods and thus are potentially capable of generating debris flows (Casalbore et al., 2011). On October 1, 2009 the northeastern

Sicily coast was struck by major flash floods and widespread landslides in the catchment area of steep subaerial creeks. Debris flows hit the coastal villages, entered the sea and produced mass wasting events and retrogressive slope failures. However, such effects were observed only in shelf and upper slope (Casalbore et al., 2011). Our post-flood cores in deep water basins show no evidence of the 2009 mass flows suggesting that flash floods events may produce debris flow in the shallow areas, but are not likely to trigger turbidity currents that travel down to the abyssal plain and deep slope basins.

Frequent storm-induced sediment gravity flows also are described at the head of the Eel submarine canyon, but not down canyon (Puig et al., 2004). In the Eel Canyon mouth, Paull et al. (2014) observed that turbidites were emplaced on average every ~36 yr during the early Holocene lower sea levels, although the average frequency over 12,000 years is much less in the deep-sea downstream channel (~246 yrs), which is a frequency similar to that of the Cascadia earthquake frequency in this area (Nelson et al., 2000; Goldfinger et al., 2012). Like the Eel fan region, the frequency of storm and floods in the Ionian Sea is very high but deep sea turbidites repeat every 100-700 yrs (Polonia et al., 2015) implying that a less frequent trigger generates the deep-sea turbidites.

In the Ionian Sea, similar to other active tectonic margins, the frequency of catastrophic floods and storms does not agree with the frequency of turbidites in the abyssal sea floor deposits. Turbidite frequency most often coincides with earthquake frequency in locations such as offshore from the Cascadia subduction zone (turbidites and earthquakes 1/~500 yr) (Nelson et al., 2000; Goldfinger et al., 2012), the northern San Andreas Fault (turbidites and earthquakes 1/~200 yr) (Goldfinger et al., 2007; Gutierrez Pastor et al., 2009), Hikurangi margin in New Zealand (Pouderoux et al., 2012 a,b), Chile subduction zone (Moernaut, et al., 2014) and Sumatra (Patton et al., 2015). For example, along the Cascadia Subduction Zone and Northern San Andreas Fault

margins for the past 10,000 years, the average turbidite recurrence times are different (530 and 200 yrs respectively the same as onshore paleoseismic recurrence times), although the same frequent storms and el Niño floods have hit both areas (Goldfinger et al., 2008; Gutierrez Pastor et al., 2009).

Along the New Zealand margin for the past 18,000 years during high and low sea levels, only 3% of the 77 turbidites have been deposited by floods and storms, whereas all the others are seismo-turbidites (Pouderoux et al., 2012a). In sum, along tectonically active margins, earthquakes appear to be the dominant triggering mechanism for turbidites at centennial timescales (e.g. Nelson et al., 2012; 2014; Pouderoux et al., 2012b; Polonia et al., 2013a, b).

7.0 - Correlation between STs and seismic events.

Turbidites can potentially provide a valuable long-term record of major earthquakes. STs are generally characterized by wide areal extent, multiple sand/silt pulses (sub-units of coarser grain size) with variable provenance, plus greater volumes, thickness and grain size than storm-generated events (Nakajima and Kanai, 2000; Shiki et al., 2000; Gorsline et al., 2000). The most conclusive proof for STs that cannot be correlated with historic earthquakes is the synchronicity of correlative turbidites over thousands of km² as shown by stratigraphic correlations (Adams, 1990; Nelson et al., 2000 Gutierrez Pastor et al., 2009), high resolution radiocarbon ages (Goldfinger et al., 2003a; 2007), and physical properties (Goldfinger et al., 2012). However, widespread slope failure has been suggested as the only criteria for inferring seismic triggering (Talling et al., 2014), even though it is difficult to obtain accurate radiocarbon ages to prove this.

Turbidite beds in the Ionian Sea exhibit all of the sedimentological characteristics considered typical of STs: multiple sand pulses; variable provenance as deduced from foraminiferal distribution, mineralogy and TOC; large thickness up to 135 cm; sand content up to 80%, and wide

areal extent compared to known storm or river-sourced turbidites. However, the most robust proof of a seismic trigger for the Ionian STs, is the synchronicity of turbidite emplacement time and historical earthquakes ages that are shown by radiometric and chronostratigraphic dating in cores CALA 04, CALA 05 and CQ14_02 (Figure 10, SM1). This ST interpretation is further supported by a number of different observations:

i) The average time interval between successive turbidite beds calculated from the thickness of pelagic sediment bracketing turbidites and sedimentation rate agrees with the time interval between major earthquakes (SM1) (Polonia et al., 2013a).

ii) The presence of stacked STa sand/silt sub-units is compatible with multiple synchronous submarine failures and turbidity currents triggered by an earthquake. This interpretation is confirmed by our new high-resolution compositional analyses, which include mineralogy, C/N, foraminifera assemblages and geochemistry (Figures 3 to 8, SM2 to SM4). Moreover, for the AD 1908 event different cable breaks occurred immediately after the earthquake suggesting the generation of multiple slope failures and turbidity currents that affected different canyon systems (Figure 1).

iii) Cyclones and storms have a short recurrence times whereas abyssal turbidites repeat every several hundred years similar to earthquake timing.

iv) Although a number of intense storms and flash floods with associated upper slope failures have occurred in the study region during the past 20 years (Miglietta et al., 2011), our deep sea cores do not show any turbidites correlated with these events.

The historical information indicates that ST1 was generated by the AD 1908 Messina earthquake. Radiometric and chronostratigraphic ages show that ST1 was emplaced immediately after 1900 (Polonia et al., 2013a). The AD 1908 Messina earthquake generated turbidity currents, which broke submarine cables in sequence as these flows travelled downslope (Figure 1). The time

elapsed between two successive cable breaks was used to estimate turbidity current velocity of 6-7 m/s (Ryan and Heezen, 1965). Analysis of sediment composition indicates that the source area for ST1 includes low to medium grade metamorphic rocks, like those outcropping in Calabria and Sicily near the Messina Strait where the first cable break and generating earthquake fault are found (Figure 1, SM2 to SM4) (Polonia et al., 2012; 2016b).

We interpret that ST2 was generated by the strongest recent Catania earthquake ($M_w=7.41$ AD 1693), which deposited the thickest ST bed on the abyssal plain (Figure 3). The maximum thickness of ST2 in the abyssal plain suggests that the canyon system at the base of the Malta escarpment is the major pathway for ST2 (canyon system N.1 in Figure 1). In contrast, the main contribution of sediment deposited in ST1 comes from the canyon system N. 2 in the central part of the study area (Figure 1). However, in both ST1 and ST2 more than one canyon system was active as demonstrated by the occurrence of correlative STs in cores CALA 04, 05 and CQ14_02 (Figures 3, 5, 7 and 11). For the AD 1908 earthquake we know that at least a third canyon system was activated as shown by the third cable break which occurred in a slope terrace (N. 4 in Figure 1).

We interpret that ST3 was emplaced during the AD 1169 $M_w=6.41$ earthquake, which had lower energy than the earthquakes generating ST2 and ST1 (Table 1). The thickness of ST3 is similar to that of ST2 in core CQ14_02, which implies that the canyon system N.1 and 2 were both active during the AD 1169 earthquake.

ST1, ST2 and ST3 are present also in cores CALA 06 and 07, which are located in other confined basins of the accretionary wedge and were used only for turbidite correlation (Figures 1, 2 and 11).

Our results, similar to other studies imply that location of coring sites is a key point and has to be considered carefully (Goldfinger et al., 2012; Sumner et al., 2013; Talling et al., 2014; Goldfinger et al., 2014; Patton et al., 2015). Not all earthquakes trigger widespread slope failure,

turbidite distribution may vary in different types of turbidite systems, and the threshold strength for an earthquake to generate an ST will vary in different geologic settings and thus the ST record may be incomplete in some locations (Nelson et al., 2000; Strasser et al., 2013; Nelson et al., 2014; Talling, 2014).

Core CALA 05 which is located in a deep slope confined basin without a direct canyon pathway has thinner STs than CALA 04, which is located in the abyssal plain with direct canyon access. Core CQ14_02, which was collected in a confined slope basin fed directly by the canyon system N. 2 exhibits thicker ST1, ST2 and ST3 than in cores CALA 04 and 05 (Figures 1, 3, 5 and 7). In addition, two new turbidites, T1/2 and T2/2 (Figures 7 and 8), not observed before, were deposited during the last 2000 yrs in this basin. Stratigraphically, T1/2 was deposited between the time of the AD 1908 and AD 1693 earthquakes (Figure 7). If T1/2 was not generated by other processes, but was generated by an earthquake, ^{14}C ages on available pelagic sediments and age modeling suggest that it may be correlated with the AD 1818 or AD 1783 earthquakes (Figures 9 and 10; Table 1; SM1). Location and magnitude of the two earthquakes (i.e. the $M_w=5.94$ AD 1783-1 and $M_w=6.23$ AD 1818) suggest that the most likely source for turbidite T1/2 is the AD 1818 earthquake, because it is stronger and it occurred close to Catania, in the Ionian Sea region (Figure 1; Table 1).

T2/2 was deposited between the AD 1693 and AD 1169 STs, and, if it is seismically triggered, ^{14}C ages on pelagic sediments below T2/2 suggest that it is correlated with the $M_w=6.62$ Siracusa AD 1542 earthquake (Figures 7, 9 and 10; Table 1; SM 1).

Our Ionian Sea research and studies elsewhere in Japan and Cascadia Basin suggest that there are earthquake magnitude thresholds required to generate STs, but thresholds vary in different basin settings depending on rupture depth, earthquake type and distance from the slope to the earthquake rupture (Nakajima and Kanai, 2000; Nelson 2000; Strasser et al., 2013, Van Daele et al.,

2013; 2014;). The Ionian Sea confined basin setting, like other confined basins, seems to have lower thresholds (Mw 6.2) for ST generation than in unconfined basins like Cascadia and Japan (Mw 7.2) (Nakajima and Kanai, 2000; Nelson et al., 2000; Strasser et al., 2013; Goldfinger et al., 2012). For the Ionian Sea, the lower threshold for earthquake triggering may be related to the peculiar physiography of this basin with very narrow shelves, steep continental slopes, high sedimentation rates and to the presence in the sedimentary section of tephra layers that may act as weak horizons enhancing slope instability (Harders et al., 2010).

The characteristics of STs in our cores and the core locations, implies that the main sediment input of turbidites ST1, T1/2, T2/2 and ST3 travelled downslope along canyon systems N.2 in the central region, which also feeds the confined slope basin of core CQ14_02 (Figure 1). On the other hand, the relative maximum thickness of turbidite ST2 in core CALA 04 suggests that the direct sediment input from canyon system at the base of the Malta escarpment (i.e. N.1 in Figure 1) was the main pathway to the abyssal depths during the AD 1693 earthquake. This is in agreement with the location of the Alfeo-Etna fault system, which has been previously described as the likely source for the AD 1693 earthquake (Polonia et al., 2012; 2013a).

8.0 – Summary of the ST facies

The Ionian Sea STs are characterized by a basal stacked sand/silt that grades upward into silt homogenites and a clayey silt cap. Colour changes integrated with sedimentologic, geochemical, mineralogic and micropaleontologic data outline four different sediment facies (STa, STb, STc, STd) (Figures 3, 5, 7 and SM2 to SM4).

The STa basal unit is represented by dark sand/silt grain size sediment that generally exhibits stacked turbidite beds with different grain size units, and geochemical/micropaleontologic composition (Figures 3, 5 and 7). Turbidite stacking may result from multiple earthquake-induced

failures, a complex earthquake or both. The greatest number of stacked units per each ST are found in the abyssal plain, while the more protected basin setting of CALA 05 core, contains finer sediment, thinner deposits and a lower number of stacked units (Figure 3 and 5). The thickest and coarsest grained turbidites occur in the confined basin of the slope terrace directly fed by canyon N. 2 (Figures 1, 7 and 11).

Unit STb is characterized by homogenous multimodal clayey silt, which shows an overall decrease in C/N related to a gradual increase in N_{tot} ; this suggests a more progressive marine input (Figures 3 to 7). Micropaleontology also suggests a progressively marine input because of the dominance in the benthic assemblages of a wide range of bathymetric and abyssal foraminifera.

Unit STc, where present, has a dark orange colour and is generally characterized by mm-thick white and dark orange lamina whose geochemical, micropaleontologic and compositional characteristics suggest a more marine input (Figures 4, 5 and 6). The grain size mode of this unit is similar to the pelagic intervals, but the texture grades upward.

The upper light orange STd unit is homogenous and shows at its base new input of coarser material, a slight increase in CT number together with an increase in Al, Fe and Mn at its base (core CALA 05) and local occurrence of inner shelf foraminifera (Figures 3 to 7). All these proxies are interpreted to represent an increased continental input in the STd unit deposition. An increase in Mn at the STd base (Figure 5) is very similar to what has been found in tsunamites along the Japanese margin after the 2011 Tohoku earthquake (Arai et al., 2013; Ikehara, 2014a; 2014b, Kanamatsu et al., 2014; McHugh et al., 2016). The Mn-enriched sediments have been interpreted to be the reworking of the redox layer close to the seabed by the tsunami wave (McHugh et al., 2016).

The differences between these two STc and STd units are best expressed in the abyssal plain deposits (Figure 3). The slope terrace deposits do not always exhibit the laminated dark orange

unit, which is present only in turbidites ST1, T1/2 and ST2 (Figure 7). ST3 in core CQ14_02 does not show any laminated dark orange unit, but this may result from the high degree of bioturbation present in the turbidite tail, which has destroyed all primary structures. T2/2 is different from all STs because it does not show the laminated dark orange STc unit, nor sharp unit boundaries but, rather, gradual transitions (Figure 8b). T2/2 is unique because it is the only deposit that appears to be related to a non-tsunamigenic earthquake (i.e. the AD 1542 event) (Figures 7, 8b and 10).

9.0 Sedimentary processes for STa, b, c, d facies

The basal multiple coarse STa sub-units are attributed to synchronous earthquake triggering of multiple sediment failures and turbidity currents that have travelled downslope through different canyons across the margin and/or to multiple seismic events such as the case of the AD 1693 double earthquakes (Figure 12b,c; Table 1). Slope morphology provides the first clue that the STa units consist of ST stacked sub-units because two upper slope canyons converge to directly feed the westernmost canyon (N1) that feeds the CALA 04 and 05 sites of deposition. Synchronously triggered turbidity currents that converge below multiple tributary canyon confluences are a typical setting for depositing stacked ST (e.g. Nelson et al., 2012; 2014; Gutierrez Pastor et al., 2013). Stacked STs were first described from the confined basins of Swiss lakes, where historic earthquakes triggered coeval landslides and turbidity currents around the basin slopes that then deposited STs on the basin floor (Strasser et al., 2006). This process also may have contributed to the STs found in the Ionian slope basin terrace (Figures 1 and 7) and is another process that can create amalgamated beds (Nelson et al., 2012).

The repeated coarser texture and sedimentary structures indicate that the multiple STa sand/silt sub-units of ST1, ST2, and ST3 are deposited from different slope failures and turbidity currents. The multiple sand or sandy silt sub-units, which exhibit separate textural gradation and

repeated parts of Bouma Tb, Tc, and Td sequences help define the different STa stacks (Figures 3 to 7 and 12) (SM2 to SM4). Often the sand stacks are finer grained in upper sub-units, but sometimes they are coarser such as in ST3a1 (Figures 3 and 5). Variable graded STa sub-units with different Bouma sequences and/or flow directions have been observed below tributary canyon and channel confluences in both open and confined basins (e.g. Nelson et al., 2012; 2014; Gutierrez Pastor et al., 2013; VanDaele et al., 2014).

The varying composition and flow directions of the different STa units is the key evidence to prove that the Ionian stacked ST result from different sediment sources that were synchronously triggered by earthquakes. For example, retrograde slope failures could possibly create multiple sand sub-units and sequences of sedimentary structures. However, different compositions and sources of each sub-unit stack confirm that synchronous turbidity currents were triggered by an earthquake (Figure 12). In the Ionian STs, the C/N ratios show that one basal stack can have a more marine source while the overlying stack has a more continental source such as in ST3a (Figure 3). The foraminifera assemblages also show a difference in the two stacks of ST3a, where the lower sub-unit ST1a1 lacks inner shelf species and the upper sub-unit ST1a2 includes inner shelf species. In ST2a, the higher content of Zr and Ba in the lower stack ST2a1 compared to the upper stack ST2a2, shows an example of different geochemical sources for the two stacks (Figure 5). Mineralogy also can differ for separate sub-unit stacks (SM2 to SM4).

The textural and compositional differences both support the interpretation that the Mw 6- 7+ historic earthquakes in the Calabrian Arc region generate stacked STs (Figure 10). These results agree with previous work in Japan (Nakajima and Kanai, 2000), off California (Goldfinger et al., 2007) and Chile (Van Daele et al., 2014) where sedimentary structures and composition verify the origin of seismic-generated stacked turbidites from similar magnitude earthquakes. It also supports the interpretation that these lower magnitude earthquakes (Mw 6 to 8) are characterized by

stacked turbidites below confluences of multiple canyon sources (Nelson et al., 2012; 2014). In contrast, the shaking of the world's strongest subduction zone earthquakes (Mw 9 with nearly 32X more energy than Mw 8) cause STs with multiple basal sand units that appear to result mainly from the shaking signature of the great earthquakes rather than stacking below confluences (Nelson et al., 2012; 2014; Gutierrez Pastor et al., 2013).

The STb unit is a common homogenite mud deposit that is found above the coarser-grained basal sandy part of STs (Nelson et al., 2014). This clayey silt turbidite tail, which gradually fines upward with an increasing clay content, is characteristic of STs in confined basins such as the Ionian Sea (Figure 1). Similar homogenite ST deposits have been described previously in the Marmara Sea, Antilles Basin, Aysén Fjord and many Swiss lakes (Beck et al., 2007; 2009; 2012; VanDaele et al. 2013; Strasser et al., 2006; Hilbe and Anselmetti, 2015). Because of the synchronous earthquake triggering of multiple turbidity currents, and the basin confinement that traps the suspension cloud of these coeval turbidity currents, these waning turbidite tail homogenite muds deposit over the basal coarser deposits of an ST (Figures 3, 5, 7 and 12). Several months after the 2010 Haiti earthquake, a 600 m thick suspension cloud was found in the Puerto Rican Trench (McHugh et al., 2011). Similar suspension cloud deposits apparently have created these homogenite deposits in the Ionian and other confined basins.

The STc unit is characterized by mm-thick white and dark laminae, has minimal textural grading and contains a more marine composition of C/N ratios and foraminiferal assemblages (Figures 3, 4, 5, 6, 7 and 8a). Based on marine composition and particularly the lamina, we interpret that the dark orange STc unit is related to basin wide seiching in the Ionian Sea (Figure 12a, b). These forward and backwards movements of the water mass can be related to the earthquake secondary surface waves or tsunamis or a combination of both (Figure 12). The seiching process can re-suspend sediment on the slope, which then flows as a dilute turbidity

current, or it can trigger wave-induced bottom currents, which then interact with the seafloor sediment. We have not been able to obtain enough detailed information on the STc units to distinguish which one of these sediment transport mechanisms produce the laminae. However, we believe that seiching bottom currents reworking sediment is the most likely process because there is no grading and multiple laminae are present in the STc unit. Fine scale laminations are also formed by the migration of diagenetic fronts. However, our multi-proxy analysis and the integrated interpretation of organic carbon data, foraminiferal assemblages, geochemistry and sedimentology suggest that the sharp base of this unit represents a discontinuity in sedimentation and the beginning of a new cycle in the sedimentation related to the seiching processes.

Both earthquake surface waves and the surge of tsunami waves may be involved in the creation of basin seiches. Surface waves from the world's strongest Mw 9 earthquakes are known to cause entire ocean basins to seiche. For example, the tide gauge time series after the 2004 tsunami showed high frequency oscillations with periods ranging from minutes to hours, which persisted for several days after the tsunami (Pattiaratchi and Wijeratne, 2009). These oscillations mainly consisted of two types: (1) waves that comprise the tsunami and are usually identified in tide gauge records during the first few hours of a tsunami, and (2) oscillations that are set up by the tsunami but whose periods are governed by the local topography. These oscillations may continue for several days after the tsunami's impact, with energy in a particular period enhanced because of the tsunami. After the 2004 tsunami, these oscillations were observed in Western Australia, which shows that these processes affect entire ocean basins as well as confined basins. For example in the enclosed basin of the Gulf of Mexico, newspapers reported that after the Mw 9.2 1964 Alaskan earthquake, the seiches from the earthquake caused boats to break away from their moorings. On the other hand, Mw 6 earthquakes affecting Swiss lakes, may be too weak for earthquake surface waves to cause seiches, but large tsunami events, most likely related to

earthquake subaqueous sediment failures in the lakes have resulted in water level oscillations that lasted for eight days (Hilbe and Anselmetti, 2014). Seiche deposits have been reported from STs of other confined basins (McHugh et al., 2006; 2011; Beck et al., 2007; 2009; Cagatay et al., 2012; Hilbe and Anselmetti, 2015).

For the historic AD 1908 earthquake, there is evidence of seiching in the Ionian Sea after the earthquake and related tsunami. Baratta (1910) describes eyewitness reports of a very rough sea, which lasted one day or more after the initial tsunami wave. These post-tsunami water mass movements are described as decreasing oscillations with a period of 12-14 minutes and amplitudes of 5-6 m lasting for 5 hours after the main tsunami wave. This evidence supports our interpretation that seiching oscillations in the confined Messina Straits area appear to be responsible for the deposition of unit STc in the AD 1908, AD 1818, AD 1693 and AD 1169 earthquake and tsunami deposits.

The two dark orange and light orange STc and STd units are characterized by significant differences in sedimentary structures, textural grading and composition. The STd unit is homogeneous but graded, lacks sedimentary structures, has a more continental origin of C/N ratios, and often includes inner shelf foraminiferal species (Figures 3 to 7). Because of the grading and more continental composition, we interpret that the light orange STd unit, is a *tsunamite cap* created by tsunami shoreline and shelf erosion and backwash return turbidity-currents, which deposit the final sediment in the Ionian Sea STs (Figure 12). The greatest travel distance and slow settling of tsunami sediment results in a graded texture, the finest grain size, and more continental material from the shallow water backwash (Figures 3 to 7). The Mn-enriched layer at the base of light orange Tc units in core CALA 05 is another important observation, because it may result from the shallow veneer of the most recent sediment (close to the redox front) that was entrained by the tsunami wave backwash (Figures 5 and 12b). Compared to confined basin settings, neither

tsunamite caps nor seiche deposits have yet been observed in 100s of STs from the unconfined basin settings of the Cascadia and northern California margins (Nelson et al, 2000, Goldfinger et al., 2007; 2012).

Although there is significant variation in the ST1, ST2, and ST3 a and b parts of the STs at different locations in the Ionian Sea (Figure 10), the STc and STd units have more or less the same thickness at all locations. For example, although units STa and STb in core CALA 07 are thinner relative to core CALA 04 because of the more confined setting, the STc and STd units have a comparable thickness (Figure 11). The consistent thickness of STc and STd indicates that their deposition is related to regional basin-wide depositional processes such as seiches and tsunamis would cause (Figure 12).

In contrast to the generally consistent thickness of the STc and STd units, the varying thickness, stacking patterns, textures and compositions of the STa and STb units in different depositional settings, indicate that STa and STb are generated by local in contrast to basin-wide processes (Figure 12). The direct canyon access of the CALA 04 site results in the clearest distinction of the STa and STb units, whereas the confined setting of CALA 05 results in less developed units (Figures 3 and 5). The direct access of a canyon to a confined proximal terrace results in thickest STa and STb units and again shows that they are deposited from local failure sources (Figures 7). However, in any of these depositional settings, the variation of texture and composition of the STa stacked turbidites shows that they are derived from multiple local slope failures triggered by the earthquakes.

Assuming that the T2/2 turbidite is generated by the non-tsunamigenic AD 1542 earthquake, T2/2 has a thickness comparable to the T1/2 turbidite despite the 400 year time interval between AD 1169 and 1542 earthquakes and the 100 year interval prior to deposition of T1/2 (Figures 7 and 10). This thickness relationship suggests that tsunamigenic earthquakes (i.e. ST1, T1/2, ST2, ST3)

may re-suspend and transport larger amounts of sediment than non-tsunamigenic earthquakes (i.e. T2/2). Most important, T2/2, which is the only turbidite apparently not associated with a tsunami, is different from all other STs because it does not contain the Tc or Td units and consists of only STa and STb units (Figure 8b). This observation suggests that the STs generation by non-tsunamigenic earthquakes in confined basins lack the Tc and Td units that are associated with tsunamigenic earthquakes.

10.0 - The AD 1908 (Mw=7.2) Messina earthquake and tsunami

Because the single AD 1908 Messina earthquake resulted in ST1a turbidite stacks from multiple slope failures, this observation provides information to understand the highly debated origin for the 1908 tsunamis (seismically or landslide triggered) (e.g. Figure 4; Table 1). The AD 1908 earthquake rupture, which is reported to be on the order of 1 m (Loperfido, 1909, Valensise and Pantosti, 1982), can create a runup of the same amplitude or a bit more (Okal and Synolakis, 2004). It follows that a significant part of the 11 m 1908 tsunami runup must have been triggered by landslides, which is in agreement with the observation of three submarine cables breaks downslope along the margin (Ryan and Heezen, 1965) and models that include a composite source (e.g. earthquake and landslide) (Tinti et al., 2008; Tappin et al., 2008; Favalli et al., 2009). The location of slope failures, however, is highly debated (see Billi et al., 2009 and references therein). The different texture, sedimentary structures and composition of multiple ST1a stacks that we observe suggests that more than one slope failure occurred after the earthquake (Figures 3 to 7). Our study thus provides information to unravel likely travel paths, sources and failure emplacement mechanisms, to help understand 1908 tsunami generation.

Turbidite ST1a in CALA 04 consists of three different stacked turbidites, which show low N_{tot} and $C/N > 10$ and suggest a more continental input (Figures 3 and 4a). Thus, we interpret that

seismic shaking triggered at least three slope failures, even though we cannot exclude more than three. The first failure occurred in a deeper environment (no inner shelf foraminifera are present) and was followed by two additional slope failures with sources closer to the coast, which have entrained material from shallow water and inner shelf foraminifera. Consequently, these shallower slope failures can be considered the likely source, together with seismic shaking, for the generation of the AD 1908 tsunami, which agrees with the study of Billi et al. (2008).

The ST1a characteristics at other locations provides further information on the dynamics of the AD 1908 slope failures (Figure 1). Multiple canyon systems fed by the event (i.e. canyon N. 1 in cores CALA 04 and 05; canyon N. 2 in core CQ14-02; canyon N. 4 responsible for cable breaks), show that more than one landslide was triggered by the earthquake. The presence of volcanic minerals in the basal ST1a1 sub- unit of core CQ14_02 suggests that the first slope failure occurred in the region between Mt. Etna and the Messina Strait (SM4). This area is connected to the canyons N. 1 and 2 (Figure 1), however, ST1 thickness up to 1.35 m in core CQ14_02 suggest that the main contribute is from canyon N. 2.

11.0 - The composite AD 1693 Mw=7.4 earthquake.

The AD 1693 seismic sequence started on January 9 with an earthquake of Mw=6.21 which was followed by the strongest earthquake of Mw=7.41 two days after (Table 1). Consequently, we need to consider if it is likely that the stacked turbidite ST2 in our cores could represent the final product of these two closely spaced earthquakes. The magnitude Mw= 6.21 of the first earthquake (1693/1 in Table 1) is weaker than the AD 1818 and AD 1169 earthquakes, which apparently triggered the T1/2 and ST3. These STs have a lower sand content (25% and 15% respectively) than other STs (up to 85% of sand), which suggests that earthquake magnitudes in the range of Mw 6 are too low to trigger turbidity currents depositing thick sand stacks on the abyssal plain (Figures

3, 5 and 7). Because ST2a has a sand content up to 70%, it seems most likely that ST2a deposits are related to multiple slope failures triggered by the second stronger Mw 7.41 earthquake, similar to the ST1a deposits (Figure 3 and 7). The relative maximum thickness of ST2 in core CALA 04 suggests that sediment input for ST2 was from canyon system at the base of the Malta escarpment (i.e. N.1 in Figure 1). This canyon location coincides with the location of Alfeo-Etna fault system (Polonia et al., 2016b), which previously has been described as the likely source for the AD 1693 earthquake (Polonia et al., 2012; 2013a).

Conclusions

Five turbidites deposited in the Ionian Sea during the last millennia have been analysed to determine the seismic shaking and tsunami wave erosion processes that generate seismo-turbidites (ST). Using radiocarbon and chronostratigraphic age models, the thickest turbidites are correlated with the AD 1908 Messina, AD 1693 Catania, and AD 1169 Eastern Sicily earthquakes. Two newly described turbidites that are only present in a perched slope basin appear to be seismically triggered by the AD 1818 and AD 1543 earthquakes.

Textural, micropaleontologic, geochemical and mineralogic analyses show that the STs have cyclic ordered sediment units (STa, STb, STc and STd) marked by different colours. The basal black STa stacked turbidite unit consists of sandy sub-units, with distinct composition related to different sediment failure sources triggered synchronously by earthquakes. The second clayey silt STb homogenite mud unit exhibits decreased C/N ratios, which indicates a more marine provenance. This unit is related to the re-suspension of the finer-grained and deeper water sediment by the multiple turbidity currents that deposit both the STa basal sand stacks and STb turbidite tail mud units. The dark orange and laminated STc unit shows more marine input and a lack of textural grading. We attribute this unit to water mass seiche resulting from a combination

of earthquake shaking, sediment failures, and perhaps tsunami wave interaction in the confined Ionian basin setting. The STd upper unit is fining upward mud with coarser sediment at the base, as well as more abundant inner shelf foraminifera tests, which is not observed in the underlying STc unit. All these proxies are interpreted to indicate a more continental and shallow water input suggesting that unit STd is related to the slow settling of fine sediment re-suspended by tsunami backwash.

Based on these observations and taking into consideration the confined setting of the Ionian Sea, we propose a conceptual depositional model for the development of tsunamigenic earthquake-triggered seismo-turbidites in a confined basin. This model illustrates the deposition of stacked turbidites, homogenites, laminites and tsunamites as a response to the complex succession of sedimentary processes following seismic shaking: multiple slope failures, waning flows of the turbidity currents, water mass seiching and tsunami backwash erosion. These confined basin STs contrast with unconfined basin STs that lack the STc seiche unit and have poor or no development of the STd tsunamite cap unit created by basin confinement.

The Messina AD 1908 and Catania AD 1693 STs provide two case histories with the most information on the triggering seismic events. The AD 1908 ST1 consists of three different stacked turbidite STa units, suggesting that seismic shaking triggered at least three slope failures. The first failure occurred in a deeper environment close to Mt. Etna because of more marine geochemical proxies, the absence of inner shelf foraminifera and the presence of volcanic minerals. This deeper slope failure was followed by two additional shallower failures, located in Southern Calabria and NE Sicily. These sediment failures can be considered the likely cause, together with coseismic seafloor displacement, for the generation of the AD 1908 tsunami.

The AD 1693 ST2 contains two distinct stacked beds that could be linked to multiple slope failures or to the sequence of two earthquakes two days apart. However, we interpret that the

magnitude ($M_w=6.21$) of the first earthquake, which occurred on January 9, was not strong enough to trigger a turbidity current traversing to the abyssal plain. Instead, we suggest that the stacked ST2a is the result of multiple slope failures caused by the strongest historic earthquake ($M_w 7.4$) in the Calabrian Arc region.

Acknowledgements

We thank the CALAMARE scientific party, Captain Lubrano, Urania shipboard and SOPROMAR parties for their contribution in core collection during the Urania cruises. We also acknowledge the *CIESM/Ifremer Medimap group* (Loubrieu B., Mascle J. et al., 2008) for providing us with the multibeam grid of the study area. We thank G. Bortoluzzi, A. Gallerani, E. Dal Passo and A. Ricchi, for logistics with core handling. We are grateful to C. Gelati and M. Imbriani, radiologists at Ospedale Maggiore in Bologna, for CT scan acquisition and to F. Ricci Lucchi for fruitful discussions. L. Langone and F. Savelli are acknowledged for TOC analysis at ISMAR (Institute of Marine Sciences). Grain size for core CQ14_02 was analyzed at University of Trieste while cores CALA 04 and 05 were analyzed at Universitat de Barcelona with the help of R. G. Lucchi. SEM/EDS analyses were carried out at Dipartimento di Scienze Biologiche, Geologiche e Ambientali, University of Bologna. This work has been supported by MIUR-PRIN, 2010-11 (Project: Active and recent geodynamics of Calabrian Arc and accretionary complex in the Ionian Sea) and has benefited from funding provided by the CNR for the R/V Urania shiptime. The Editor Michele Rebesco, Peter Talling (Guest Editor), Jasper Moernaut, David Piper and Mike Underwood are greatly thanked for their detailed and helpful reviews, which have significantly improved our paper. ISMAR paper N. 1886.

REFERENCES

- Adams, J., 1990. Paleoseismicity of the Cascadia subduction zone: evidence from turbidites off the Oregon–Washington margin. *Tectonics* 9, 569–583. Doi: 10.1029/TC009i004p00569.
- AGIP, 1982, Foraminiferi Padani (Terziario e Quaternario). AGIP, Milan, Italy.
- Arai, K., Naruse, H., Miura, R., Kawamura, K., Hino, R., Ito, Y., Inazu, D., Yokokawa, M., Izumi, N., Murayama, M., Kasaya, T., 2013. Tsunami-generated turbidity current of the 2011 Tohoku-Oki earthquake. *Geology* 41, 1195–1198.
- Banner, F.T., Blow, W.H., 1960, Some primary types of species belonging to the superfamily Globigerinaceae. *Contributions from the Cushman Foundation for Foraminiferal Research* 11, 1–41.
- Baratta, M., 1910. La catastrofe sismica calabro-messinese (28 Dicembre 1908). Relazione alla Società Geografica Italiana. Roma, 2 voll. (text and atlas), pp. XV, 426, (OCLC 38646170; <https://www.worldcat.org/title/terremoto-calabro-siculo-del-28-dicembre-1908-messina/oclc/38646170>).
- Beck, C., Mercier de Lépinay, B., Schneider, J.-L., Cremer, M., Çağatay, N., Wendenbaum, E., Boutareaud, S., Ménot, G., Schmidt, S., Weber, O., Eris, K., Armijo, R., Meyer, B., Pondard, N., Gutscher, M.-A., and the MARMACORE Cruise Party, Turon, J.-L., Labeyrie, L., Cortijo, E., Gallet, Y., Bouquerel, H., Gorur, N., Gervais, A., Castera, M.-H., Londeix, L., de Rességuier, A., Jaouen, A., 2007. Late Quaternary co-seismic sedimentation in the Sea of Marmara's deep basins. In: Bourrouilh-Le Jan, F., Beck, C., Gorsline, D. (Eds.), *Sedimentary Records of Catastrophic Events. Sedimentary Geology Special Issues* 199, 65–89.
- Beck, C., 2009. Late Quaternary lacustrine paleo-seismic archives in north-western Alps: Examples of earthquake-origin assessment of sedimentary disturbances. *Earth Science Review* 96, 327–344.
- Beck, C., Reyss, J.-L., Leclerc, F., Moreno, E., Feuillet, N., Barrier, L., Beauducel, F., Boudon, G., Clément, V., Deplus, C., Gallou, N., Lebrun, J.-F., Le Friant, A., Nercessian, A., Paterne, M., Pichot, T., Vidal, C., 2012. Identification of deep subaqueous coseismic scarps through specific coeval sedimentation in Lesser Antilles: implication for seismic hazard. *Natural Hazards and Earth System Sciences* 12, 1755–1767. Doi:10.5194/nhess-12-1755-2012
- Billi, A., Funicello, R., Minelli, L., Faccenna, C., Neri, G., Orecchio, B., and Presti, D., 2008. On the cause of the 1908 Messina tsunami, southern Italy, *Geophysics Research Letters* 35 (6), L06301. Doi:10.1029/2008GL033251.
- Billi A., R. Funicello, Minelli L., Faccenna C., Neri G., Orecchio B., and Presti D., 2009. Reply to comment by Andrea Argani et al. on “On the cause of the 1908 Messina tsunami, southern Italy”. *Geophysical Research Letters* 36 (13), L13308. Doi:10.1029/2009GL037499.
- Blanc-Vernet, L., 1969. Contribution à l'étude des foraminifères de Méditerranée. *Travaux de la Station Marine d'Endoume, Marseille, France*.
- Boschi, E., Guidoboni E., Ferrari G., Valensise G., and Gasperini P., 1997. *Catalogo dei forti terremoti in Italia dal 461 A.C. al 1990*. INGV-SGA, Bologna, pp. 644
- Boschi, E., Guidoboni, E., Ferrari, G., Mariotti, D., Valensise, G., Gasperini, P., 2000. Catalogue of strong Italian earthquakes from 461 B.C. to 1997. *Annali di Geofisica* 43, 609–868.
- Bottari, A., Capuano, P., De Natale, G., Gasperini, P., Neri, G., Pingue, F., Scarpa, R., 1989. Source parameters of earthquakes in the Strait of Messina, Italy, during this century. *Tectonophysics* 166, 221–234.
- Bronk Ramsey, C., 2008. Deposition models for chronological records. *Quaternary Science Reviews* 27, 42–60.
- Bronk Ramsey, C., and Lee, S., 2013, Recent and Planned Developments of the Program OxCal. *Radiocarbon* 55, 720–730.

- Çagatay, M.N., Erel, L., Bellucci, L.G., Polonia, A., Gasperini, L., Eris, K., Sancar, Ü., Biltekin, D., Uçarkus, G., Ülgen, U.B., Damci, E., 2012. Sedimentary earthquake records in the Izmit Gulf, Sea of Marmara, Turkey. *Sedimentary Geology* 282, 347–359. Doi: 10.1016/j.sedgeo.2012.10.001.
- Carter, L., Milliman, J.D., Talling, P.J., Gavey, R., and Wynn, R.B., 2012. Near-synchronous and delayed initiation of long run-out submarine sediment flows from a record-breaking river flood, offshore Taiwan. *Geophysical Research Letters* 39, L12603. Doi:10.1029/2012GL051172.
- Casalbore, D., Chiocci F. L., Scarascia Mugnozza G., Tommasi P., and Sposato A., 2011. Flash-flood hyperpycnal flows generating shallow-water landslides at Fiumara mouths in Western Messina Strait (Italy), “Special issue: Seafloor mapping for geohazard assessment” *Marine Geophysical Research* 32, 257–271. Doi: 10.1007/s11001-011-9128-y.
- Cita, M.B., Ciampo, G., Ferone, E., Moncharmont Zei, M., Scorziello, R., and Taddei Ruggiero, E., 1974, Il Quaternario del Tirreno abissale. Interpretazione stratigrafica e paleoclimatica del pozzo DSDP 132: *Revista Española de Micropaleontología* 2, 257-326.
- Duliu, O.G. 1999. Computer axial tomography in geosciences: an overview. *Earth-Science Review* 48, 265-281.
- Faccenna, C., Molin, P., Orecchio B., Olivetti, V., Bellier, O., Funicello, F., Minelli, L., Piromallo, C., and Billi, A., 2011. Topography of the Calabria subduction zone (southern Italy): Clues for the origin of Mt. Etna. *Tectonics* 30, TC1003. Doi: 10.1029/2010TC002694.
- Favalli, M., Boschi, E., Mazzarini, F., Pareschi, M.T., 2009. Seismic and landslide source of the 1908 Straits of Messina tsunamis (Sicily, Italy). *Geophysical Research Letters* 36, L16304. Doi: 10.1029/2009GL039135.
- Friedman, G.M., Sanders, J.E., 1978. *Principles of Sedimentology*, John Wiley & Sons, New York. pp. 792
- Gasperini L., and Stanghellini G., 2009. SeisPrho: An interactive computer program for processing and interpretation of high-resolution seismic reflection profiles. *Computers & Geosciences* 35(7), 1497-1507.
- Goldfinger, C., Nelson, C.H., Johnson, J.E., 2003a. Deep-water turbidites as Holocene earthquake proxies: the Cascadia Subduction Zone and northern San Andreas Fault systems. *Annals of Geophysics*, 46(5), 1169–1194.
- Goldfinger, C., Nelson, C.H., Johnson, J.E., Shipboard Scientific Party, 2003b. Holocene earthquake records from the Cascadia Subduction Zone and northern San Andreas Fault based on precise dating of offshore turbidites. *Annual Review of Earth and Planetary Sciences* 31, 555–577.
- Goldfinger, C., Morey, A.E., Nelson, C.H., Gutierrez-Pastor, J., Johnson, J.E., et. al., 2007. Rupture lengths and temporal history of significant earthquakes on the offshore and north coast segments of the northern San Andreas Fault based on turbidite stratigraphy. *Earth Planet Science Letters* 254, 9–27.
- Goldfinger, C., Nelson, C.H., Morey, A., Johnson, J.E., Gutierrez-Pastor, J., Eriksson, A.T., Karabanov, E., Patton, J., Gracia, E., Enkin, R., Dallimore, A., Dunhill, G., Vallier, T., 2012. Turbidite event history—methods and implications for Holocene paleoseismicity of the Cascadia subduction zone. *U.S. Geological Survey Professional Paper 1661-F*, pp. 170 (Available at <http://pubs.usgs.gov/pp/pp1661f/>, March 2016).
- Goldfinger, C., Patton, J.R., Van Daele, M., Moernaut, J., Nelson, C.H., de Batist, M., Morey, A., 2014. Can turbidites be used to reconstruct a paleo earthquake record for the central Sumatran margin?: Comment. *Geology Society of America* 42, e344, Doi: 10.1130/G35510C.1.

- Gorsline, D.S., De Diego, T., Nava-Sanchez, E.H., 2000. Seismically triggered turbidites in small margin basins: Alfonso Basin, Western Gulf of California and Santa Monica Basin, California Borderland. *Sedimentary Geology* 135, 21–35.
- Gutiérrez-Pastor, J., Nelson, C.J., Goldfinger, C., Escutia, C., Eriksson, A., Morey, A.E., and The shipboard Scientific party, 2009. Earthquake control of Holocene turbidite frequency confirmed by hemipelagic sedimentation chronology on the cascadia and northern California active continental margins. Society for Sedimentary Geology, Tulsa Oklahoma, Eds. Kneller, B., Martissen, O.J., McCaffrey, B., SEPM Special Publication 92, 179–197. ISBN 978-1-56576-200-8. (Available online at http://activetectonics.coas.oregonstate.edu/paper_files/Gutierrez-Pastor%20et%20al%202009.pdf, March 2016).
- Gutiérrez-Pastor, J., Nelson, C.J., Goldfinger, C., Escutia, C., 2013. Sedimentology of seismo-turbidites off the Cascadia and northern California active tectonic continental margins, northwest Pacific Ocean. *Marine Geology* 336, 99–119. doi: 10.1016/j.margeo.2012.11.010
- Harders, R., Kutterolf, S., Hensen, C., Moerz, T., Brueckmann, W., 2010. Tephra layers: A controlling factor on submarine translational sliding? *Geochemistry Geophysics Geosystems* 11(5), Q05S23. Doi: 10.1029/2009GC002844.
- Hilbe, M., and Anselmetti, F.S., 2014. Signatures of slope failures and river-delta collapses in a perialpine lake (Lake Lucerne, Switzerland). *Sedimentology* 61(7), 1883–1907. Doi: 10.1111/sed.12120.
- Hilbe, M., and Anselmetti F. S., 2015. Mass Movement-Induced Tsunami Hazard on Perialpine Lake Lucerne (Switzerland): Scenarios and Numerical Experiments. *Pure and Applied Geophysics* 172,545–568. Doi: 10.1007/s00024-014-0907-7.
- Howarth, J.D., Fitzsimons, S.J., Norris, R.J., and Jacobsen, G.E., 2014. Lake Sediments record high intensity shaking that provides insight into the location and rupture length of large earthquakes on the Alpine Fault, New Zealand. *Earth and Planetary Science Letters* 403, 340–351.
- Ikehara, K., Irino, T., Usami, K., Jenkins, R., Omura, A., Ashi, J., 2014a. Possible submarine tsunami deposits on the outer shelf of Sendai Bay, Japan resulting from the 2011 earthquake and tsunami off the Pacific coast of Tohoku. *Marine Geology* 349, 91.
- Ikehara, K., Irino, T., Usami, K., Jenkins, R., Omura, A., Ashi, J., 2014b. Possible submarine tsunami deposits on the outer shelf of Sendai Bay, Japan resulting from the 2011 earthquake and tsunami off the Pacific coast of Tohoku. *Marine Geology* 358, 120–127.
- Kanamatsu T., Kanagawa Y., Ikehara K., 2014. Paleoseismology Along the Japan Trench Subduction Zone: Deep-Sea Sediment Records of Earthquakes in Tohoku (Invited). AGU Fall meeting Oral presentation: T52A-01. San Francisco 15–19 December 2014.
- Kastens, K.A., Cita, M.B., 1981. Tsunami-induced sediment transport in the abyssal Mediterranean Sea. *Geological Society of America Bulletin* 92, 845–857.
- Kastens, K.A., 1984. Earthquakes as a triggering mechanism for debris flows and turbidites on the Calabrian Ridge. *Marine Geology* 55, 13–33.
- Kennett, J.P., and Srinivasan, M.S., 1983, Neogene planktonic foraminifera: a phylogenetic atlas: Stroudsburg, Pennsylvania, Hutchinson Ross Publishing Company, pp. 265
- Loperfido, A., 1909. Livellazione geometrica di precisione eseguita dall'IGMI sulla costa orientale della Sicilia, da Messina a Catania, a Gesso ed a Faro Peloro e sulla costa occidentale della Calabria da Gioia Tauro a melito di Porto salvo. per incarico del Ministro dell'Agricoltura, Industria e Commercio, Roma. In *Relazione alla Commissione Reale Accademia Nazionale dei Lincei* 35, 131–155.

- Mayer, P. A., 1994. Preservation of elemental and isotopic source identification of sedimentary organic matter. *Chemical Geology* 114, 289–302.
- McHugh, C.M.G., Seeber, L., Cormier, M.-H., Dutton, J., Çagatay, M.N., Polonia, A., Ryan, W.B.F., Görür, N., 2006. Submarine earthquake geology along the North Anatolian Fault in the Marmara Sea, Turkey: a model for transform basin sedimentation. *Earth and Planetary Science Letters* 248, 661–684. Doi: 10.1016/j.epsl.2006.05.038.
- McHugh, C.M., Seeber, L., Braudy, N., Cormier, M.-H., Davis, M.B., Diebold, J.B., Dieudonne, N., Douilly, R., Gulick, S.P.S., Hornbach, M.J., Johnson III, H.E., Ryan, K.M., Sorlien, C.C., Steckler, M.S., Symithe, S.J., Templeton, J., 2011. Offshore sedimentary effects of the 12 January 2010 Haiti earthquake. *Geology* 39, 723–726.
- McHugh, C.M., Kanamatsu, T., Seeber, L., Bopp, R., Cormier, M.-H., and Usami, K., 2016. Remobilization of surficial slope sediment triggered by the AD 2011 M_w 9 Tohoku-Oki earthquake and tsunami along the Japan Trench. *Geology*, doi:10.1130/G37650.1.
- Miglietta, M.M., Laviola, S., Malvaldi, A., Conte, D., Levizzani, V., and Price, C., 2011. Analysis of tropical-like cyclones over the Mediterranean Sea through a combined modeling and satellite approach. *Geophysical research Letters*, 40, 2400–2405, doi:10.1002/grl.50432, 2013.
- Moernaut, J., M. V. Daele, K. Heirman, K. Fontijn, M. Strasser, M. Pino, R. Urrutia, and M. De Batist (2014), Lacustrine turbidites as a tool for quantitative earthquake reconstruction: New evidence for a variable rupture mode in south central Chile, *Journal of Geophysical Research: Solid Earth* 119, 1607 – 1633. Doi:10.1002/ 2013JB010738.
- Mulder, T., Mignon, S., Savoye, B., Faugeres, J.-C., 2001. Inversely graded turbidite sequences in the deep Mediterranean. A record of deposits from flood-generated turbidity currents? *Geo-Marine Letters* 21, 86–93.
- Mulder, T., Syvitski, J.P.M., Migeon, S., Faugères, J.C., Savoye, B., 2003. Marine hyperpycnal flows: initiation, behavior and related deposits. A review. *Marine and Petroleum Geology* 20, 861–882. Doi: 10.1016/j.marpetgeo.2003.01.003.
- Murray, J.W., 1991. *Ecology and Palaeoecology of Benthic Foraminifera*. Longman Scientific and Technical, London.
- Murray, J.W., 2006. *Ecology and applications of benthic foraminifera*. Cambridge University Press, Cambridge.
- Mutti, E., Ricci Lucchi, F., Seguret, M., and Zanzucchi, G., 1984. Seismoturbidites: A new group of resedimented deposits. *Marine Geology* 55, 103–116.
- Nakajima, T., Kanai, Y., 2000. Sedimentary features of seismoturbidites triggered by the 1983 and older historical earthquakes in the eastern margin of the Japan Sea. *Sedimentary Geology* 135, 1–19.
- Nelson, C.H., Goldfinger, C., Johnson, J.E., Dunhill, G., 2000. Variation of modern turbidite systems along the subduction zone margin of Cascadia Basin and implications for turbidite reservoir beds. In: Weimer, P.W., Nelson, C.H., et al. (Eds.), *Deep-water Reservoirs of the World*, Gulf Coast Section Society of Economic Paleontologists and Mineralogists Foundation, 20 Annual Research Conference, 714–717.
- Nelson, C.H., Escutia, C., Goldfinger, C., Karabanov, E., Gutiérrez-Pastor, J., 2009. External controls on modern clastic turbidite systems: three case studies. In: Kneller, B., McCaffrey, W., Martinsen, O.J. (Eds.), *External Controls on Deepwater Depositional Systems: SEPM Special Publication* 92, 57–76.
- Nelson, C.H., Gutiérrez Pastor, J., Goldfinger, C., Escutia, C., 2012. Great earthquakes along the Western United States continental margin: implications for hazards, stratigraphy and

- turbidite lithology, *Natural Hazards and Earth System Sciences* 12, 3191–3208. Doi: 10.5194/nhess-12-3191-2012
- Nelson, C.H., Goldfinger, C., Gutierrez Pastor, J., and Damuth, J.E., 2014. Seismo-turbidites: implications for active tectonic margin stratigraphy, lithology and petroleum reservoirs, *Gulf Coast Association of Geological Societies Transactions*, 64, 589-597.
- Normark, W., Piper, D., 1991. Initiation processes and flow evolution of turbidity currents: Implications for the deposition record. In: Osborne, R. (Ed.), *From Shoreline to Abyss: Contributions in Marine Geology in Honor of Francis Parker Shepard*, SEPM Special Publication 46, 207-230, Tulsa.
- Okal, E.A., Synolakis C.E., 2004. Source discriminants for near-field tsunamis. *Geophysical Journal International* 158, 899–912.
- Omori, F., 1909. Preliminary report on the Messina-Reggio earthquake of December 28, 1908. *Bulletin of the Imperial Earthquake Investigation Commission* 3, 37– 46.
- Parisi, E., 1981. Distribuzione dei foraminiferi bentonici nelle zone batiali del Tirreno e del Canale di Sicilia. *Rivista Italiana di Paleontologia e Stratigrafia* 87, 293-328.
- Pattiaratchi, C. B. and Wijeratne, E.M.S., 2009. Tide Gauge Observations of 2004–2007 Indian Ocean Tsunamis from Sri Lanka and Western Australia. *Pure and Applied geophysics* 166, 233-258. Doi: 10.1007/s00024-008-0434-5.
- Patton, J.R., Goldfinger, C., Morey, A.E., Ikehara, K., Romsos, C., Stoner, J., Djadjadihardja, Y., Udrek, Ardhyastut, S., Zulkarnaen Gaffar, E., Vizcaino, A., 2015. A 6600 year earthquake history in the region of the 2004 Sumatra-Andaman subduction zone earthquake. *Geosphere* 11, 9, 1-63. Doi: 10.1130/GES01066.1
- Patton, J.R., Goldfinger, C., Morey, A., Romsos, C., Black, B., Djadjadihardja, Y.S., Udrek, U., 2013. Seismoturbidite record as preserved at core sites at the Cascadia and Sumatra. *Natural Hazards and Earth System Sciences* 13, 833–867.
- Paull, C.K., McGann, M., Sumner, E.J., Barnes, P.M., Lundsten, E.M., Anderson, K., Gwiazda, R., Edwards, B., and Caress, D.W., 2014. Sub-decadal turbidite frequency during the early Holocene: Eel Fan, offshore northern California. *Geology* 42(10) 855-858.
- Pino, N.A., Piatanesi, A., Valensise, G., Boschi E., 2009. The 28 December 1908 Messina Straits earthquake (Mw 7.1): a great earthquake throughout a century of seismology. *Seismological Research Letters* 80, 243-259.
- Piper, D.J.W., Normark, W.R., 2009. Processes that initiate turbidity currents and their influence on turbidites: a marine geology perspective. *Journal of Sedimentary Research* 79, 347–362.
- Platania, G., 1909. Il maremoto dello Stretto di Messina del 28 Dicembre 1908, *Bollettino della Società Sismologica Italiana* 13, 369– 458.
- Polonia, A., Torelli, L., Mussoni, P., Gasperini, L., Artoni, A., Klaeschen, D., 2011. The Calabrian Arc subduction complex in the Ionian Sea: regional architecture, active deformation and seismic hazard. *Tectonics* 30, TC5018. Doi: 10.1029/2010TC002821.
- Polonia, A., Torelli, L., Gasperini, L., Mussoni, P., 2012. Active faults and historical earthquakes in the Ionian Sea. *Natural Hazards and Earth System Sciences* 12, 2311–2328. Doi: 10.5194/nhess-12-2311-2012.
- Polonia, A., Panieri, G., Gasperini, L., Gasparotto, G., Bellucci, L.G., Torelli, L., 2013a. Turbidite paleoseismology in the Calabrian Arc subduction complex (Ionian Sea). *Geochemistry, Geophysics, Geosystems* 14, 112–140. Doi: 10.1029/2012GC004402.
- Polonia, A., Bonatti, E., Camerlenghi, A., Lucchi, R.G., Panieri, G., Gasperini, L., 2013b. Mediterranean megaturbidite triggered by the AD 365 Crete earthquake and tsunami. *Scientific Reports* 3, 1285. Doi: 10.1038/srep01285.

- Polonia, A., Torelli, L., Gasperini, L., Romano, S., Vaiani, S.C., Artoni, A., 2014. Active Tectonics and Seismic/Tsunami Hazard in the Messinian Straits Region: the Ionian and Alfeo/Etna Fault System. *Atti del 33° Convegno Nazionale GNGTS, Bologna 25-27 Novembre 2014. Tema 1: Geodinamica* 163-168.
- Polonia, A., Romano, S., Çağatay, M.N., Capotondi, L., Gasparotto, G., Gasperini, L., Panieri, G., Torelli, L., 2015. Is repetitive slumping during sapropel S1 related to paleo-earthquakes?. *Marine Geology* 361, 41–52.
- Polonia A., Vaiani C.S., and De Lange G., 2016. Did the AD 365 Crete earthquake/tsunami trigger synchronous giant turbidity currents in the Mediterranean Sea? *Geology* 44, 191-194. Doi: 10.1130/G37486.1
- Pouderoux, H., Proust, J.-N., Lamarche G., Orpin, A., and Neil, H., 2012a. Postglacial (after 18 ka) deep-sea sedimentation along the Hikurangi subduction margin (New Zealand): Characterisation, timing and origin of turbidites. *Marine Geology*, 295-298, 51-76. Doi:10.1016/j.margeo.2011.11.002
- Pouderoux, H., Lamarche, G., Proust, J.-N., 2012b. Building an 18 000-year-long paleoearthquake record from detailed deep-sea turbidite characterisation in Poverty Bay, New Zealand. *Natural Hazards and Earth System Sciences* 12, 2077–2101. Doi: 10.5194/nhess-12-2077-2012.
- Puig, P., Ogston, A.S. Mullenbach, B.L., Nittrouer, C.A., Parsons, J.D., and Sternberg, R.W., 2004. Storm-induced sediment gravity flows at the head of the Eel submarine canyon, northern California margin, *Journal Geophysical Research* 109, C03019. Doi: 10.1029/2003JC001918.
- Rasmussen, T.L., 2005. Systematic paleontology and ecology of benthic foraminifera from the Plio-Pleistocene Kallithea Bay Section, Rhodes, Greece, in: Rasmussen, T.L., Hastrup, A., Thomsen, E., (Eds.), *Lagoon to Deep-Water Foraminifera and Ostracods from the Plio-Pleistocene Kallithea Bay Section, Rhodes, Greece*, Fredericksburg, Virginia, Cushman Foundation Special Publication 39, 53-157.
- Rothwell, R.G., Thomson, J., Kähler, G., 1998. Low-sea-level emplacement of a very large Late Pleistocene 'megaturbidite' in the western Mediterranean Sea. *Nature* 392, 377–380. Doi: 10.1038/32871.
- Rovida, A., Camassi, R., Gasperini, P., Stucchi, M., 2011. CPTI11, la versione 2011 del Catalogo Parametrico dei Terremoti Italiani. Istituto Nazionale di Geofisica e Vulcanologia, Milano, Bologna. Doi: 10.6092/INGV.IT-CPTI11. (Available at: <http://emidius.mi.ingv.it/CPTI>, April 2016).
- Ryan, W.B.F., Heezen, B.C., 1965. Ionian Sea submarine canyons and the 1908 Messina turbidity current. *Geological Society of America Bulletin*, 76, 915-932.
- Shanmugam, G., 2011. Process-sedimentological challenges in distinguishing paleo-tsunami deposits. *Natural Hazards* 63, 5–30. Doi:10.1007/s11069-011-9766-z.
- Shiki, T., Kumon, F., Inouchi, Y., Kontani, Y., Sakamoto, T., Tateishi, M., Matsubara, H., Fukuyama, K., 2000. Sedimentary features of the seismo-turbidites, Lake Biwa, Japan. *Sedimentary Geology* 135, 37–50. Doi: 10.1016/S0037-0738(00)00061-0.
- Shiki, T., and Cita, M.B., 2008. Tsunami-related sedimentary proprieties of Mediterranean Homogenites as an Example of Deep-Sea Tsunamiite. Reference in chapter 13 in edited book: *TSUNAMIITES: Features and Implication*, Elsevier Eds., pp.203-215.
- Stanley, D.J., 1981. Unifites: structurless muds of gravity-flow origin in Mediterranean basins. *Geo-Marine Letters* 1 (2), 77-83.
- Strasser, M., Stegmann, S., Bussmann, F., Anselmetti, F.S., Rick, B., Kopf, A., 2007. Quantifying subaqueous slope stability during seismic shaking: Lake Lucerne as model for ocean margins. *Marine Geology* 240, 77–97.

- Strasser, M., Moneke, K., Schnellmann, M, and Anselmetti, F.S., 2013. Lake sediments as natural seismographs: A compiled record of Late Quaternary earthquakes in Central Switzerland and its implication for Alpine deformation. *Sedimentology* 60, 319–341. Doi: 10.1111/sed.12003.
- Sumner, E.J., Siti, M.I., McNeill, L.C., Talling, P.J., Henstock, T.J., Wynn, R.B., Djajadihardja, Y.S., and Permana, H., 2013, Can turbidites be used to reconstruct a paleoearthquake record for the central Sumatran margin?: *Geology* 41: 763–766. Doi:10.1130/G34298.1.
- Talling, P.J., Paull C.K., Piper, D.J.W., 2013. How are subaqueous sediment density flows triggered, what is their internal structure and how does it evolve? Direct observations from monitoring of active flows. *Earth Science Reviews* 125, 244-287.
- Talling, P.J., 2014. On the triggers, resulting flow types and frequencies of subaqueous sediment density flows in different settings. *Marine Geology* 352, 155-182.
- Talling, P.J., Allin, J., Armitage, D.A., Arnott, R.W.C., Cartigny, M.J.B., Clare, M.A., Felletti, F., Covault, J.A., Girardclos, S., Hansen, E., Hill, P.R., Hiscott, R.N., Hogg, A.J., Clarke, J.H., Jobe, Z.R., Malgesini, G., Mozzato, A., Naruse, H., Parkinson, S., Peel, F.J., Piper, D.J.W., Pope, E., Postma, G., Rowley, P., Sguazzini, A., Stevenson, C.J., Sumner, E.J., Sylvester, Z., Watts, C. and Xu, J., 2015. Key future directions for research on turbidity currents and their deposits. *Journal of Sedimentary Research* 85(2), 153-169. Doi:10.2110/jsr.2015.03.
- Tappin, D. R., 2008. The 1908 Messina tsunami. Some comments on the source: Earthquake, submarine landslide or a combination of both?, *Eos Trans. AGU Fall Meeting Supplementary* 89 (53), Abstract S41D-07,
- Tinti, S., Maramai, A., Graziani, L., 2004. The new catalogue of the Italian tsunamis. *Natural Hazards* 33, 439–465.
- Tinti, S., Armigliato, A., Zaniboni, F., Tonini, R., Pagnoni, G., Gallazzi, S., Manucci, A., and Pontrelli P., 2008. Quale sorgente per il maremoto del 28 Dicembre 1908 nello Stretto di Messina? Terremoto, frana sottomarina o entrambe?, in 27° Convegno Nazionale, Gruppo Nazionale di Geofisica Della Terra Solida, Trieste, Italy, pp. 191–192.
- Tonini, R., A. Armigliato, G. Pagnoni, F. Zaniboni, and S. Tinti (2011), Tsunami hazard for the city of Catania, eastern Sicily, Italy, assessed by means of Worst-case Credible Tsunami Scenario Analysis (WCTSA). *Nat. Hazard Earth System Sciences* 11, 1217–1232. Doi:10.5194/nhess-11-1217-2011
- Tripsanas, E.K., Bryant, W.R., and Phaneuf, B.A., 2004. Depositional processes of uniform mud deposits (unifites), Hedberg Basin, northwest Gulf of Mexico; new perspectives, in W.W. Sager, W.R. Bryant, and E.H. Doyle, prefacers, *High-resolution studies of continental margin geology and geohazards: AAPG Bulletin* 88/6, 825-840.
- Valensise, G., and Pantosti, D., 1982. A 125-Kyr-long geological record of seismic source repeatability: the Messina Straits (southern Italy) and the 1908 earthquake (*MS 71*), *Terra Nova*, 4, 472- 483.
- Van Daele, M., Versteeg, W., Pino, M., Urrutia, R., and De Batist, M., 2013. Widespread deformation of basin- plain sediments in Aysén fjord (Chile) due to impact by earthquake-triggered, onshore- generated mass movements,. *Marine Geology* 337: 67–79. Doi:10.1016/j.margeo .2013 .01 .006.
- Van Daele, M., Cnudde, V., Duyck, P., Pino, M., Urria, R., De Batist, M., 2014. Multidirectional, synchronously-triggered seismo-turbidites and debrites revealed by X-ray computed tomography (CT). *Sedimentology* 61 (4): 861–880. Doi: 10.1111/sed.12070.

FIGURE CAPTIONS:

Figure 1 – Shaded relief map of topography/bathymetry of the central and eastern Mediterranean Sea (data from SRMT plus: http://topex.ucsd.edu/WWW_html/srtm30_plus.html) with major tectonic structures in red (modified from Polonia et al., 2011; 2016b).

The inset map shows the Africa/Eurasia plate boundary (in white) and location of the working area in the Mediterranean (see red box). Yellow stars represent location of four cable breaks after the AD 1908 Messina earthquake (Ryan and Heezen, 1965). The time elapsed between two successive cable breaks was used to reconstruct the seismo-turbidite velocity (6-7 m/s, according to Ryan and Heezen, 1965). Orange dots represent sediment cores described in this study while red dots represent the epicentres of historical earthquakes as reported in the earthquake catalogue (Rovida et al., 2011). MS: Messina Strait region. White lines represent major canyon systems (labelled 1-4) from the Messina Strait region down to the abyssal plain.

Figure 2 – Sub-bottom CHIRP profiles across the coring sites. Location of Chirp seismic line and gravity cores are shown in Figure 1. a) Sub-bottom Chirp profile along the core transect CALA 04, 05, 06, 07 at the transition from the abyssal plain to the outer accretionary wedge. Core CALA 04 was collected in the abyssal plain, while cores CALA 05, 06, 07 in more confined basins not directly connected with the abyssal plain nor to canyon systems. Insets: zoom of the CHIRP profiles on the coring stations. b) Sub-bottom Chirp profile across the tectonically controlled ponded closed basin at a canyon mouth where CQ14_02 was collected. Gravity cores are represented in red.

Figure 3 – Uppermost section of core CALA 04: CT scan with CT number in red, photograph with high resolution magnetic susceptibility in yellow, grain size modes in different colours, grain size % with mean diameter grain size (MD) in red, sedimentary facies STa, b, c, d with benthic foraminifera assemblages and organic carbon data (TOC%, N_{tot} , and C/N: green areas if C/N<10, yellow areas if C/N>10). Benthic foraminiferal assemblages are grouped in three different classes: blue= abyssal species (mainly *A. tubulosa*); green= wide bathymetric ranges; brown= inner shelf (see Table 2 for more details). Thin coloured line= rare specimens: less than 25 specimens in 0,03 gr of sample; thick coloured line= common specimens: more than 25 specimens in 0,03 gr of sample (see Table 2 for details on the bathymetric distribution). Identified seismo-turbidites (ST1, ST2 and ST3) with individual units (a, b, c and d) are indicated.

Figure 4 – a) Enlarged photo of turbidite ST1 in core CALA 04 with super-imposed MD (red line) and C/N (black line). C/N>10 is marked by yellow areas. White box shows location of enlarged photo in part b. b) Enlarged photo of the upper part of ST1 in core CALA 04 showing the distinct units ST1a, ST1b, ST1c and ST1d. Unit STc is marked by a basal dark orange unit with mm thick white and brown laminae. The light orange upper unit ST1d, on the other hand, is homogenous and does not show any lamination.

Figure 5 – Uppermost section of core CALA 05: CT scan with CT number in red, photograph with high resolution magnetic susceptibility in yellow, grain size modes in different colours, grain size % with mean grain size (MD) in red, sedimentary facies STa, b, c, d with benthic foraminifera assemblages, organic carbon data (TOC%, N_{tot} , and C/N: green areas if C/N<10, yellow areas if C/N>10) and XRF data. Benthic foraminiferal assemblages are grouped as in Figure 3. Identified seismo-turbidites (ST1, ST2 and ST3) with individual units (STa, b, c and d) are indicated.

Figure 6 – a) Enlarged photo of turbidite ST1 and ST2 in core CALA 05 with superimposed MD (red line) and C/N (black line). C/N>10 is marked by yellow areas. White box shows location of enlarged photo in part b. b) Enlarged photo of ST1 in core CALA 05 showing the distinct units ST1a, ST1b, ST1c and STc. Unit STc is marked by a basal dark orange unit with mm thick white and brown laminae. The light orange upper unit STc is homogenous graded mud and does not have lamination.

Figure 7 – Uppermost section of core CQ14_02: CT scan with CT number in red, photograph with high resolution magnetic susceptibility in yellow, grain size modes in different colours, grain size % with mean grain size diameter (MD) in red, sedimentary facies with benthic foraminifera assemblages and organic carbon data (TOC%, N_{tot} , and C/N: green areas if C/N<10, yellow areas if C/N>10). Benthic foraminiferal assemblages are grouped as in Figure 3. Identified seismo-turbidites (ST1, ST2 and ST3) with individual units (STa, b, c and d) are indicated.

Figure 8 – Enlarged photo of turbidites T1/2 (part a) and T2/2 (part b) from core CQ14_02 with superimposed mean grain size diameter (red line) and C/N (black line). C/N>10 is marked by yellow areas. a) Turbidite T1/2 shows the typical Ionian Sea stacked STa unit with two sandy sub-units (T1/2a1 and T1/2a2) and C/N>10, the fining upward ST1b grey unit (T1/2b), the STc unit with mm-thick lamina (T1/2c) and the more homogeneous STd unit (T1/2d). b) Turbidite T2/2 is different from other STs because color transitions are more gradual and the turbidite only has basal sand units (T2/2a) and a Tb homogenite unit (T2/2b) with no visible Tc or Td overlying the Ta and Tb units.

Figure 9 – Core CQ14_02 age model built using the P_Sequence (a Bayesian model of deposition) implemented in the computer program OxCal 4.2.4 (Bronk Ramsey, 2013). See methods (section 4.0) for explanation of calculation. We have estimated seafloor erosion during ST1 and ST2 emplacement considering a constant pelagic sedimentation rate during the last Millennia, as deduced by Polonia et al. (2013a). Deviation from this constant sedimentation rate (slope of the age model) provides evidence of only a small amount of seafloor erosion (0.6 cm and 1.6 cm during the ST1 and ST2 emplacement respectively)

Figure 10– Chronogram of the turbidite events identified in the gravity cores. Pink vertical bars: radiocarbon ages reported with its 2σ calibrated interval from Polonia et al. (2013a). Green vertical bars: new radiocarbon ages obtained from core CQ14_02 (see Figure 9 and Tables 3 and 4 in SM1). Grey bars: turbidite emplacement time deduced through chronostratigraphic reconstructions considering mean interval of pelagic sediments bracketing turbidite beds and sedimentation rate (Tables 3 and 4 in SM1). Yellow bars: emplacement time deduced through core correlations (see Figure 11). Horizontal lines indicate the age of earthquakes (thick dark red: M>7 tsunamigenic earthquakes; thin bright red: M<7 tsunamigenic earthquakes; grey horizontal line: M<7 non-tsunamigenic earthquake). Light blue horizontal line at top: time span for 6 major cyclonic storms and floods between AD 2004 and 2012 (Miglietta et al., 2011), with nopolst-cyclone turbidites observed in cores taken after 2012.

Figure 11 – Correlation between turbidite beds in cores CALA 04, 05, 06, 07 and CQ14_02. The multi-proxy analyses was performed only in cores CALA 04, 05 and CQ14_02 while cores CALA 06 and 07, collected in confined slope basins of the outer accretionary wedge (Figures 1 and 2 for location) were used only for core correlation. The red line represents the top of the Homogenite/Augias Turbidite (HAT), which was emplaced after the AD 365 earthquake and

tsunami (Polonia et al., 2013b). For graphical reasons the scale of core CQ14_02 is twice relative to the other cores.

Figure 12 - Schematic diagrams showing a) earthquake-generated processes, b) the resulting sedimentary processes and c) deposits we observe in our cores. a) Propagation of a tsunami wave generated by seafloor offset along a fault plane and/or resulting from slope failures. The tsunami wave may or may not interact with the seafloor offset and slope failures to generate seiches. b) Sedimentary processes and deposits related to multiple seismically triggered slope failures, resulting in multiple turbidity currents and deposition of stacked seismo-turbidites overlain by homogenites deposited by the waning turbidity currents on the abyssal seafloor. Seiching of confined basin water masses, reworks seismo-turbidite homogenites and deposition laminated clayey silts. Seafloor erosion of shoreline and shelf by tsunami wave backwash flows and creates slow sedimentation of final suspension cloud that deposits graded clayey silts and silty clays. c) General model of seismo-turbidite (ST) sequence for confined basins where seiching can occur (i.e. lakes, fjords, landlocked seas like Marmara or Ionian Sea). The sandy basal STa unit contains multiple stacked graded seismo-turbidite sub-units each with different Bouma Tb, Td and Tc structures and compositions (mineralogy, chemistry, foraminiferal assemblages and C/N ratios). Above the stacked sandy base, graded homogenite muds, marine laminites and shallow water tsunamites deposit in response to waning of the turbidity currents, seiching processes and tsunami backwash.

TABLE CAPTIONS:

Table 1 – Major historical earthquakes in the study area that have $M_w > 5.8$ (Rovida et al., 2011). In grey earthquakes that triggered the deposition of a seismo-turbidites in the analysed cores. TSUN: earthquakes associated with tsunamis (Tinti et al., 2004).

Table 2 – Water depth distribution of the main benthic foraminifera in core samples.

Table 3 – ^{14}C ages for samples collected within pelagic sediments bracketing the turbidites in core CQ14_02. Measured ages were calibrated according to the radiocarbon calibration program *CALIB REV6.0.0* (Stuiver and Reimer, 1993) and results are reported both for $\Delta R=0$ and $\Delta R=147\pm 43$.

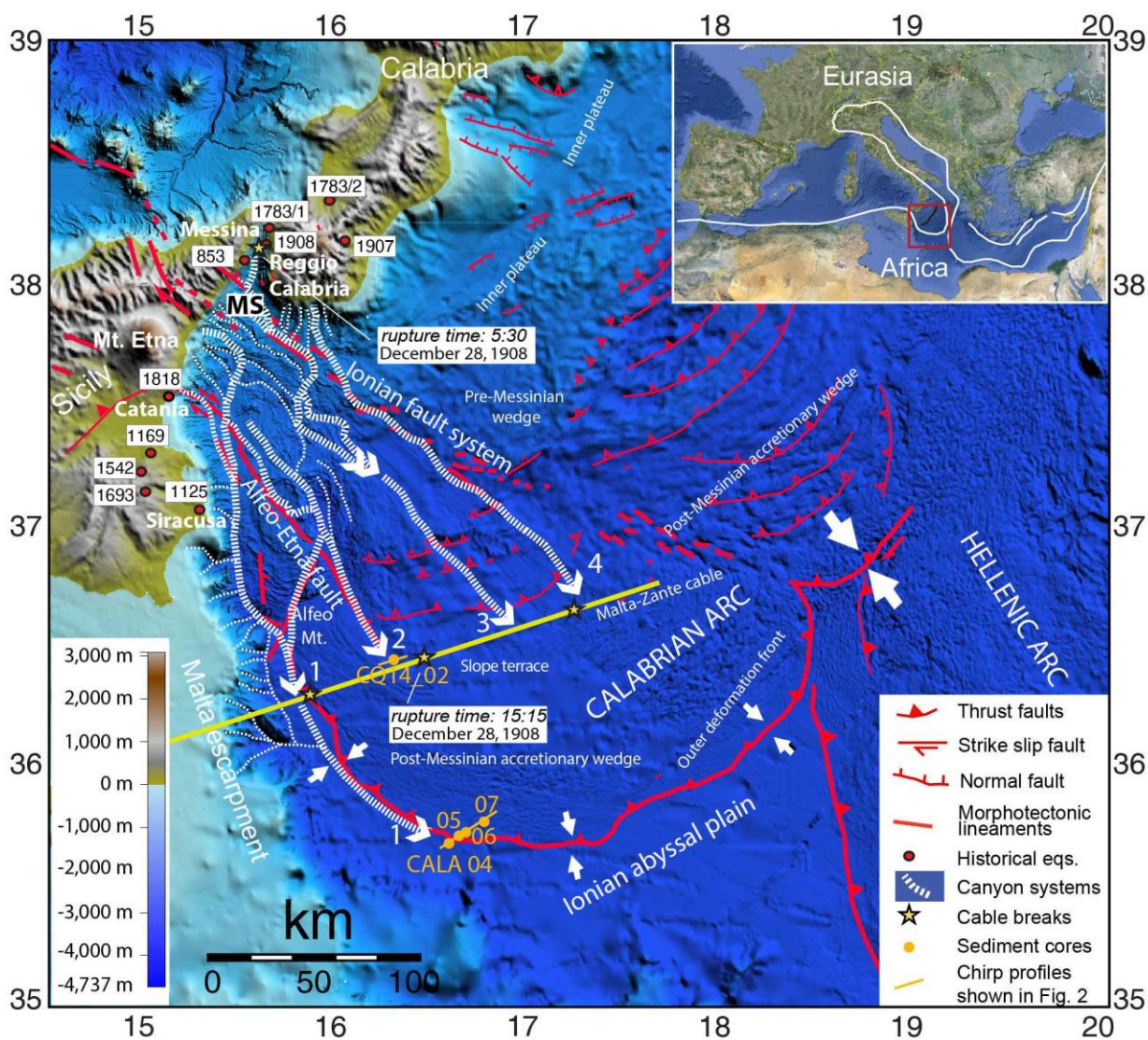
SUPPLEMENTARY MATERIAL:

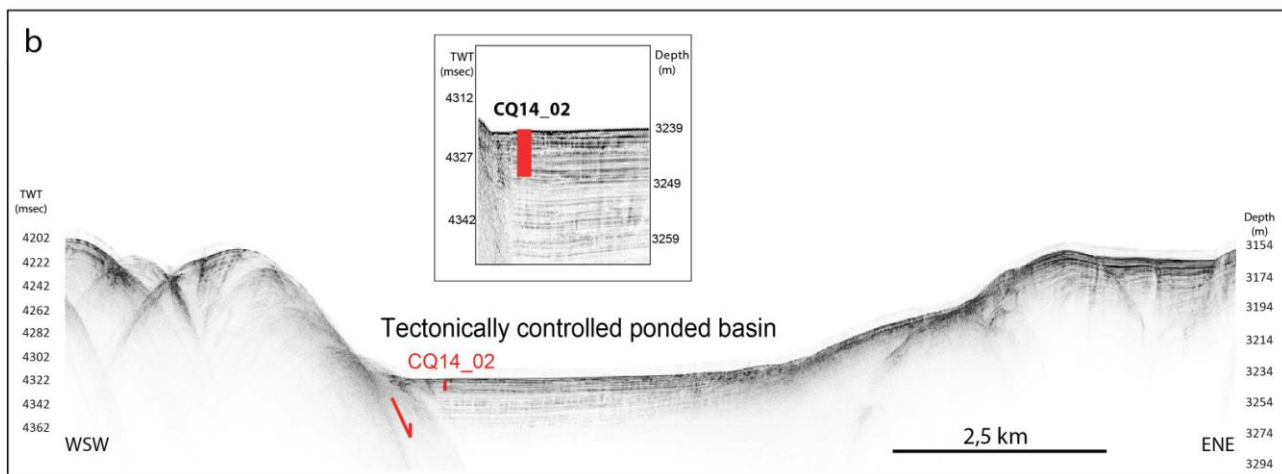
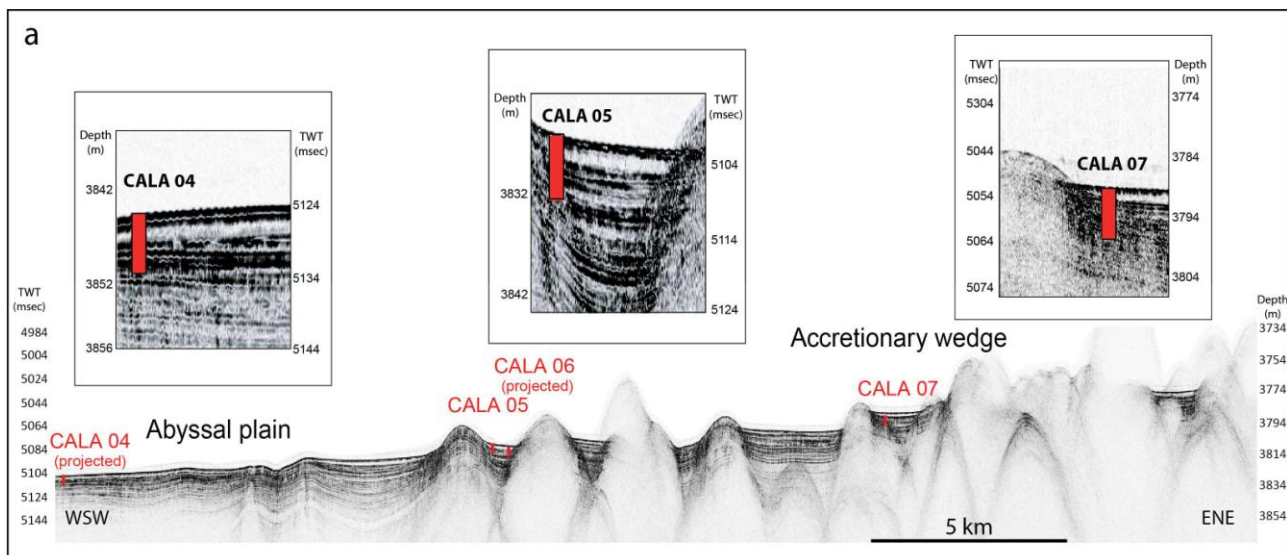
SM1 – Radiometric dating (^{137}Cs , ^{210}Pb , ^{14}C) and chronostratigraphic ages of turbidite beds in cores CALA 04, CALA 05 and CQ14_02.

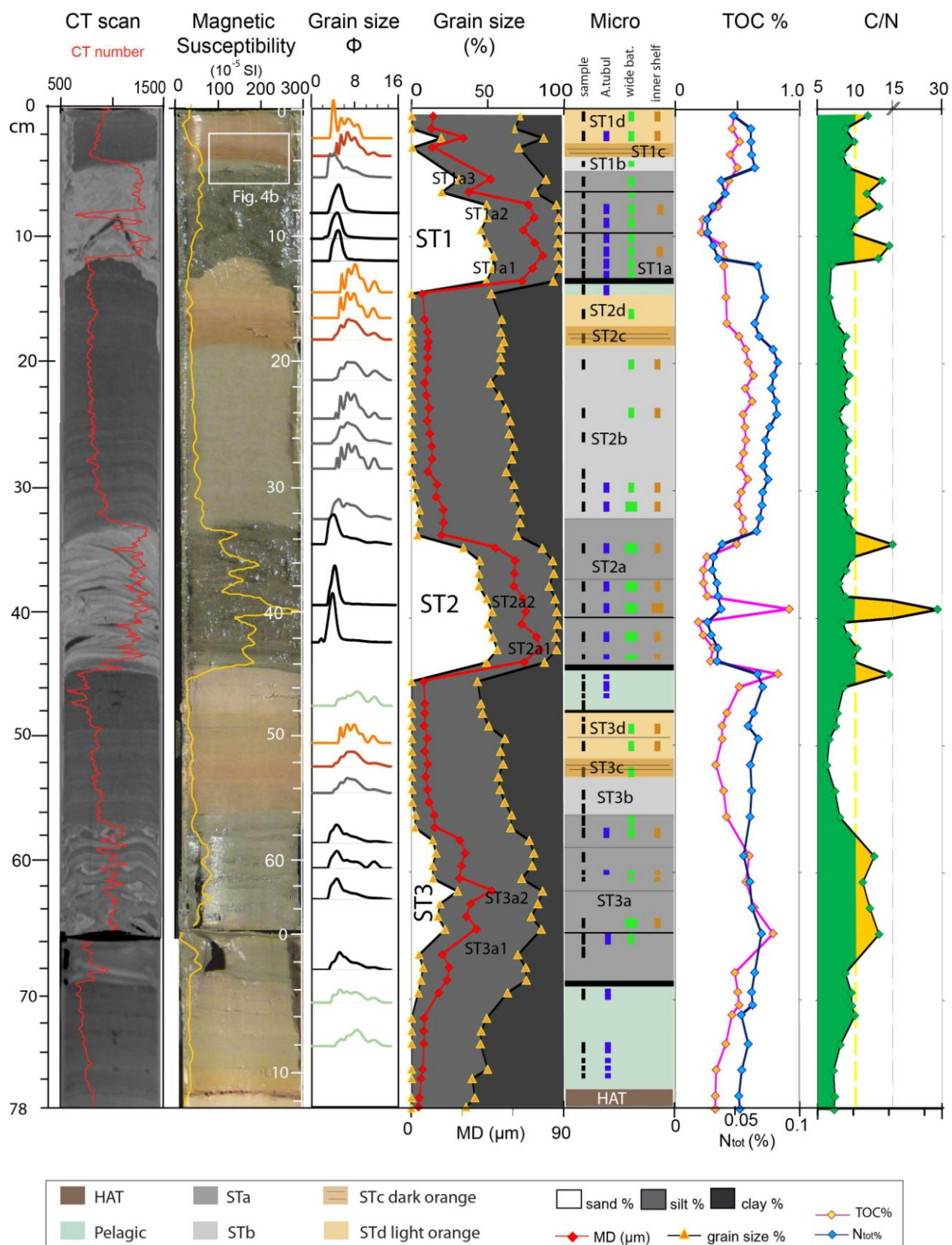
SM2 – Sedimentary facies and composition of seismo-turbidite units in core CALA 04. Bt: biotite; Ms: muscovite; Fsp: feldspar; Qz: quartz; Aug: augite; Ol: olivine; Plagioclase. Mineral abbreviations from (Whitney and Evans, 2010).

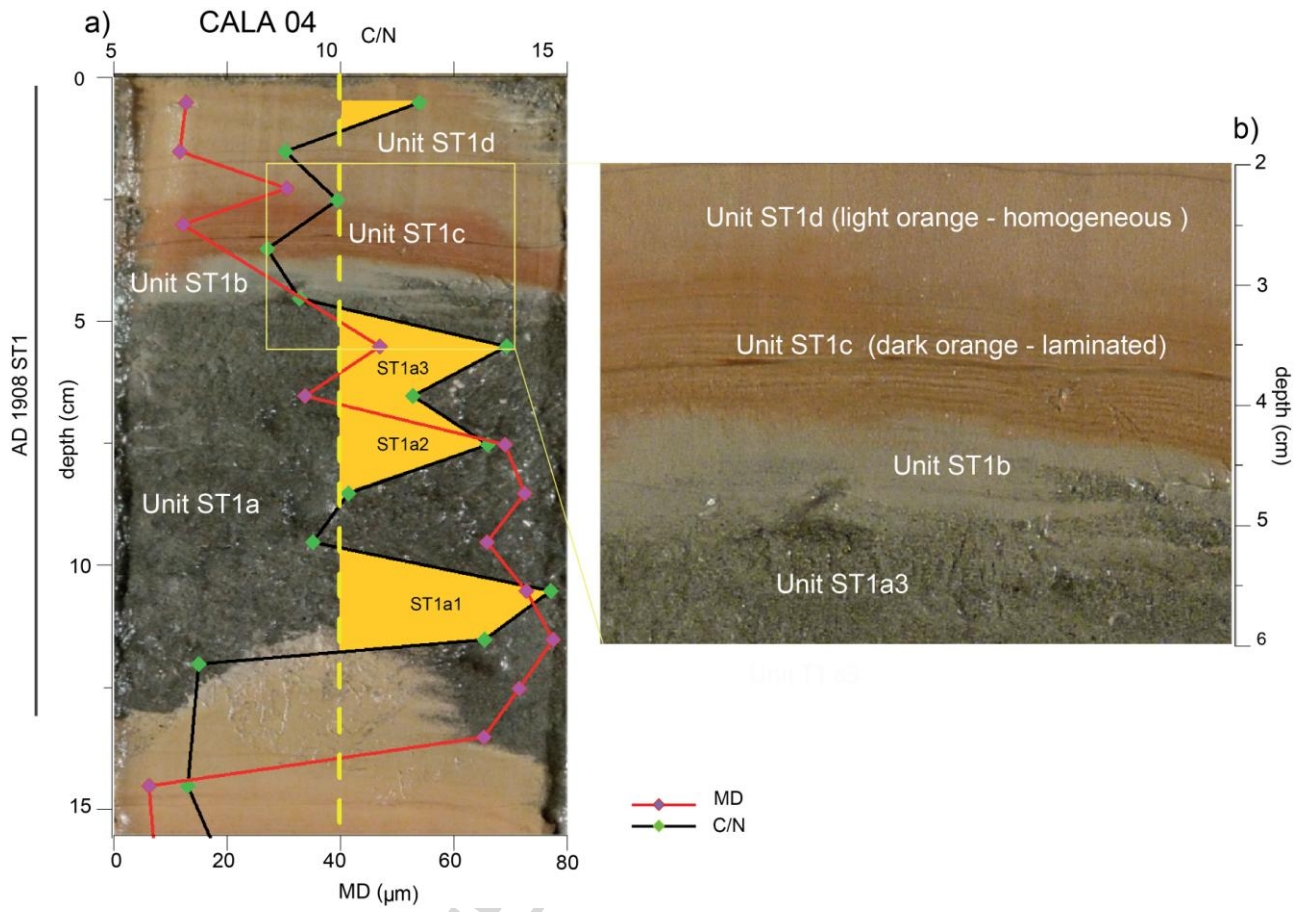
SM3 – Sedimentary facies and composition of seismo-turbidite units in core CALA 05. Bt: biotite; Ms: muscovite; Fsp: feldspar; Qz: quartz; Aug: augite; Ol: olivine; Plagioclase. Mineral abbreviations from (Whitney and Evans, 2010).

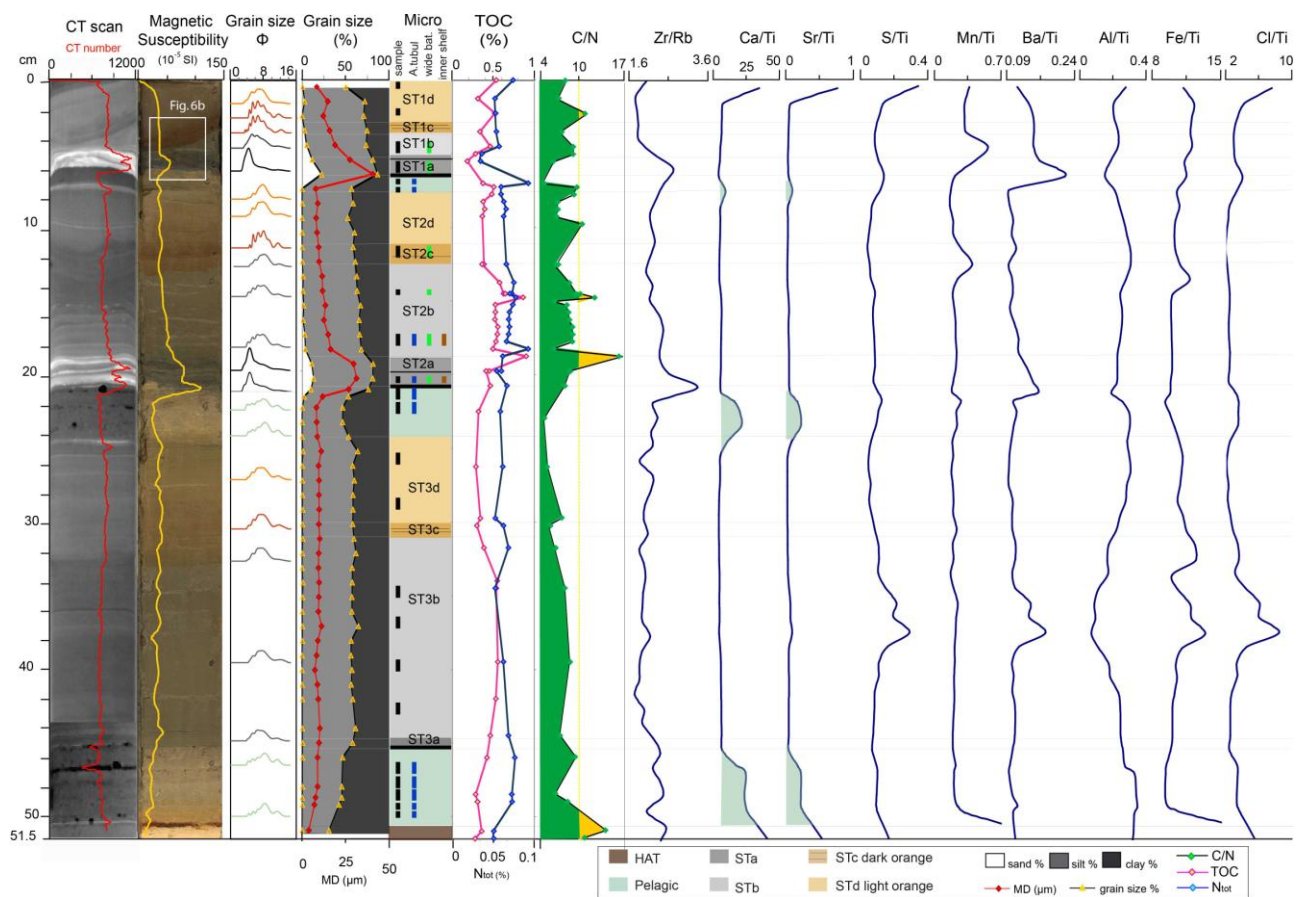
SM4 – Sedimentary facies and composition of seismo-turbidite units in core CQ14_02. Bt: biotite; Ms: muscovite; Fsp: feldspar; Qz: quartz; Aug: augite; Ol: olivine; Plagioclase. Mineral abbreviations from (Whitney and Evans, 2010).

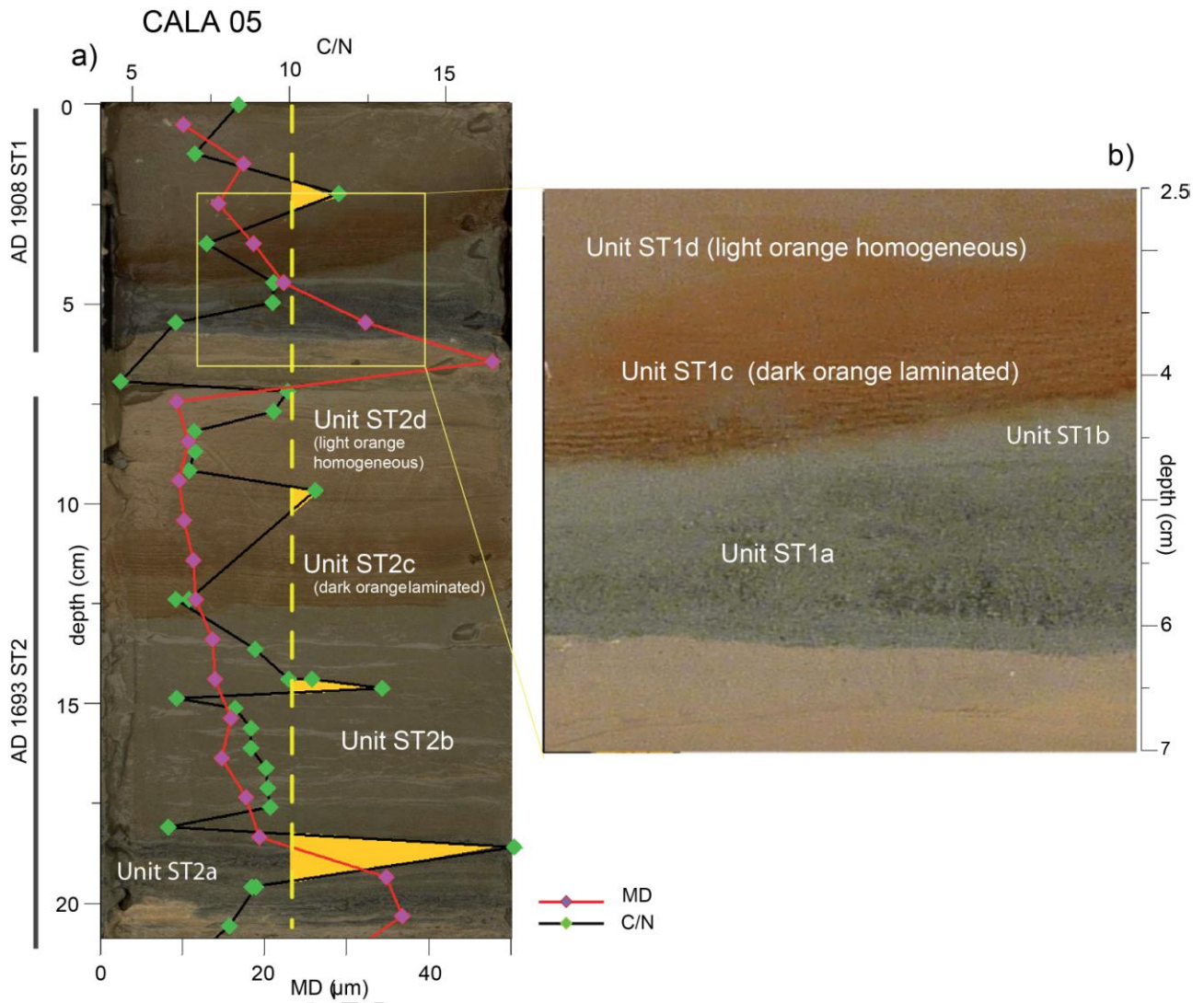


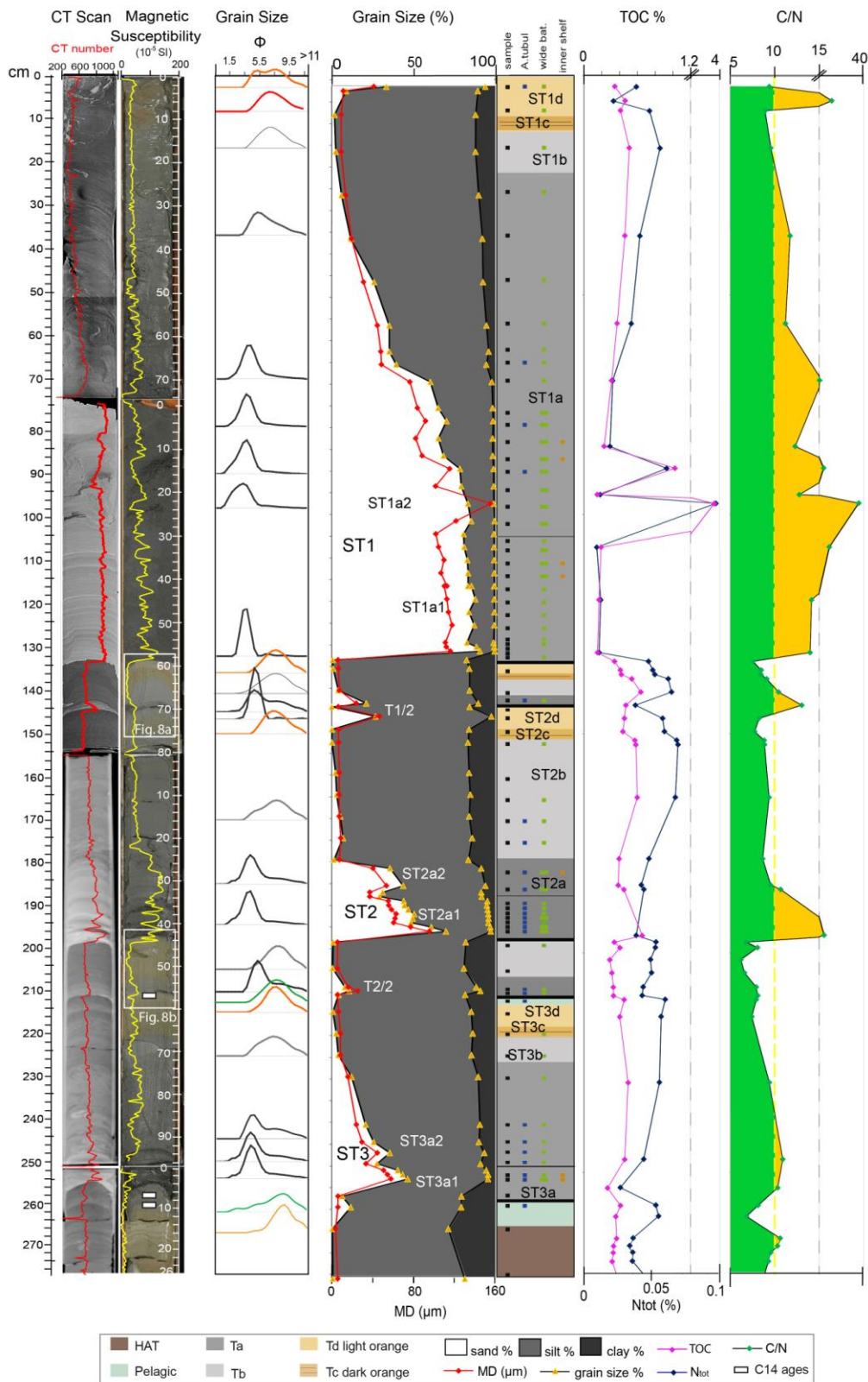


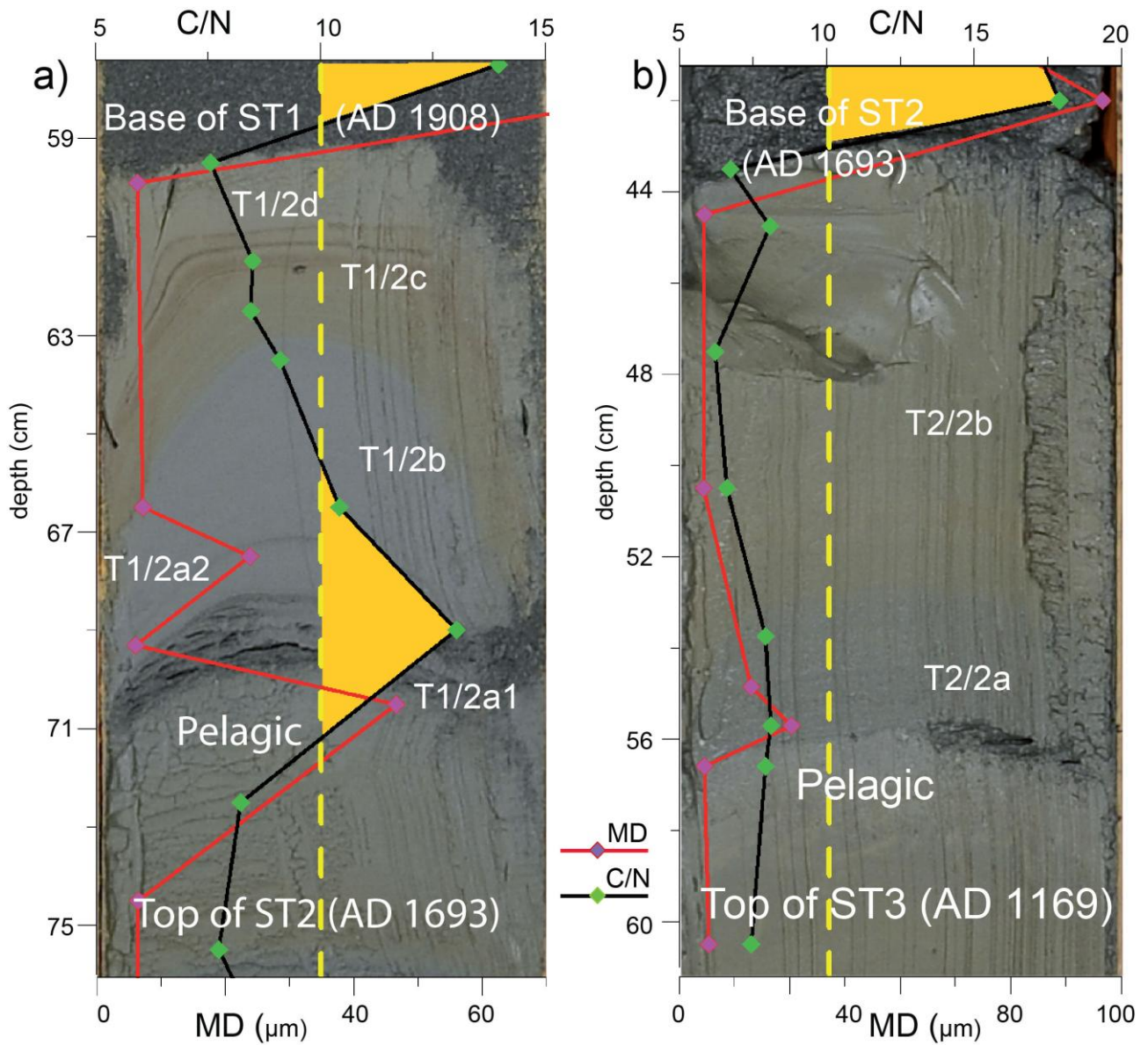




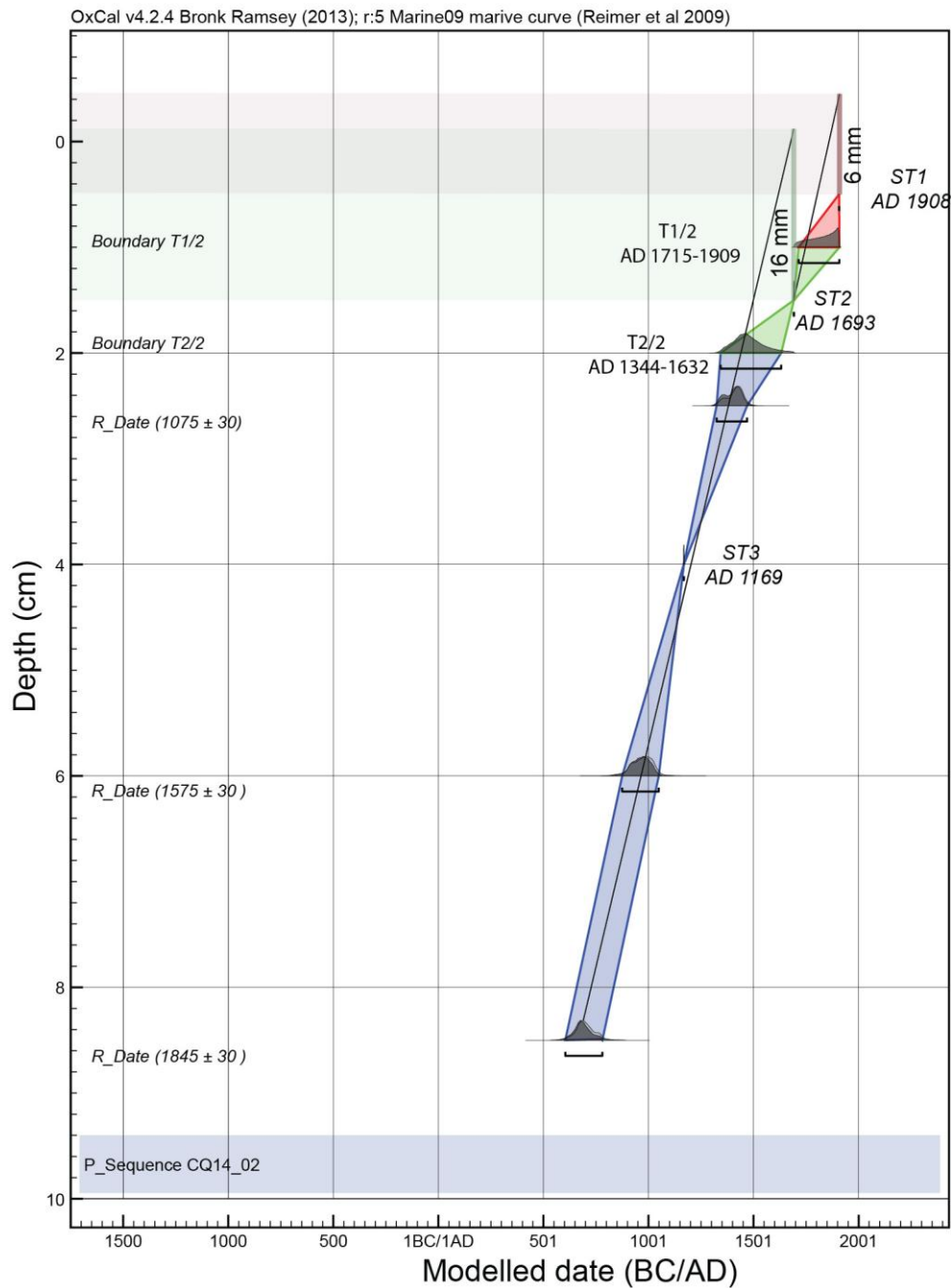


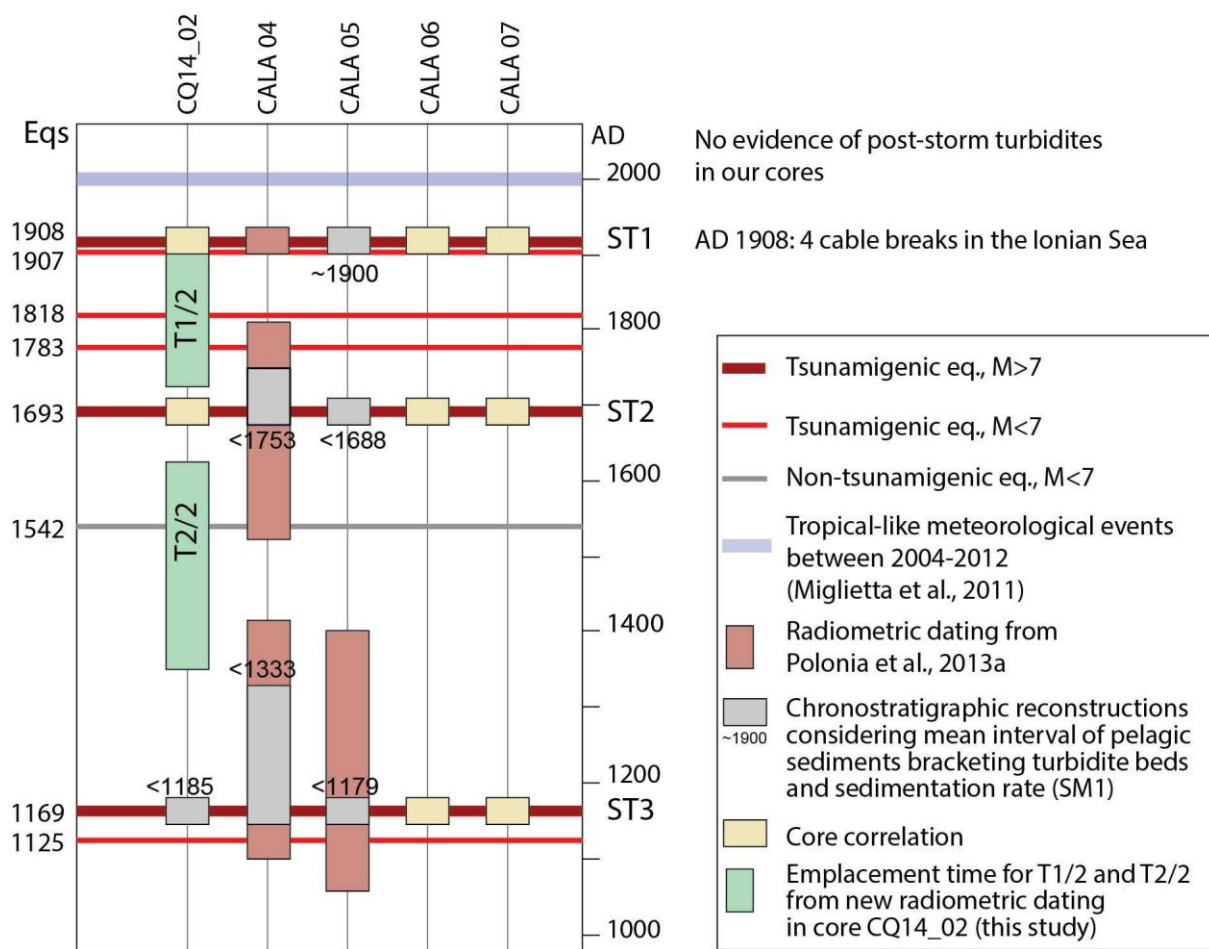




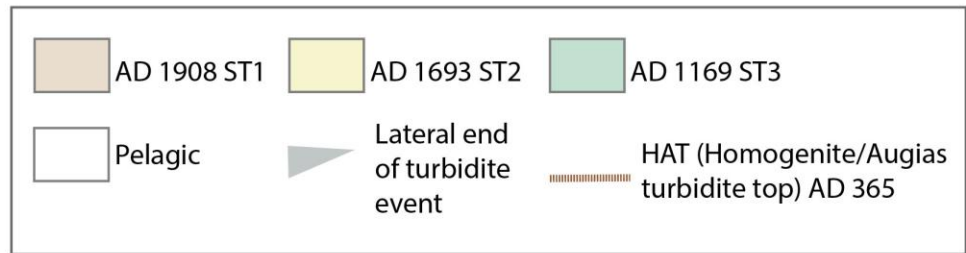


OXCAL AGE MODEL CQ14_02





CQ14_02



CALA 04



CALA 05

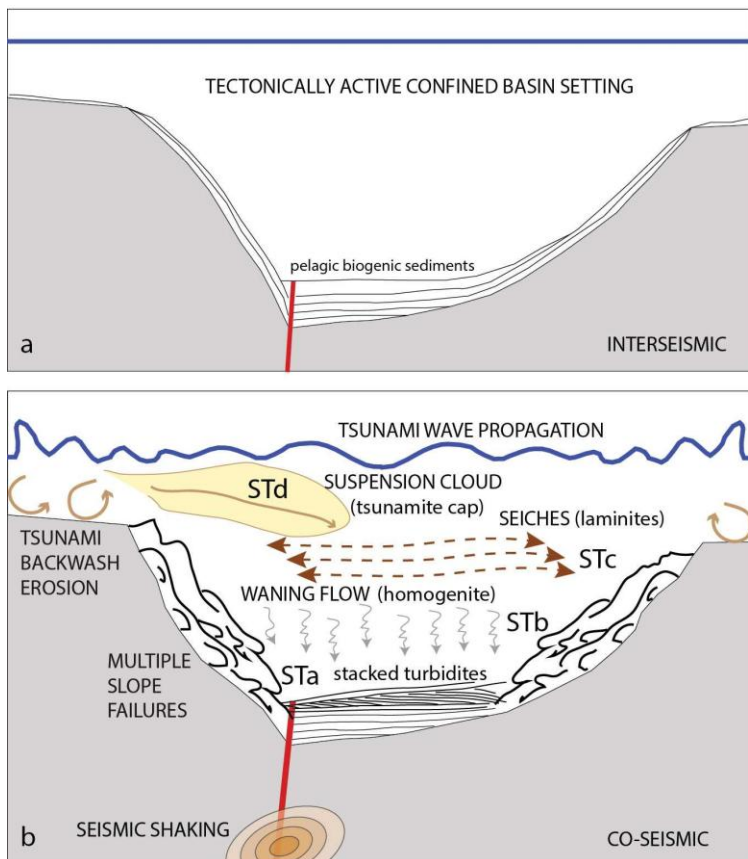


CALA 06

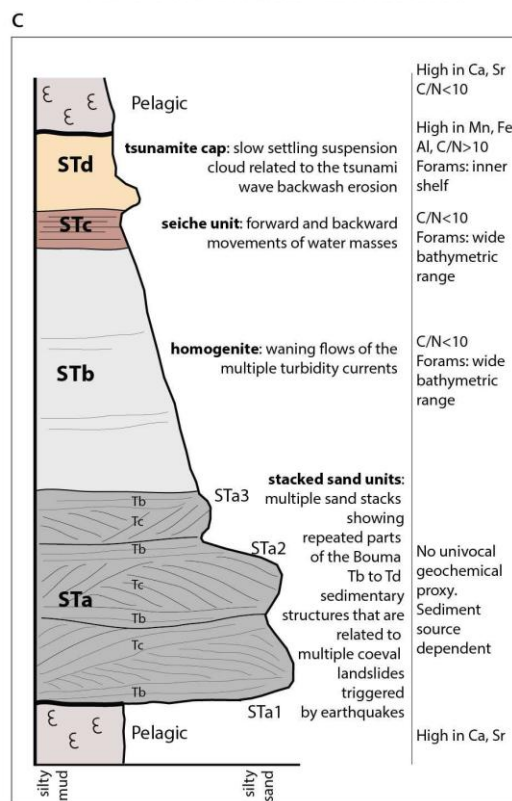


CALA 07





DEPOSITIONAL MODEL FOR SEISMO-TURBIDITES IN CONFINED BASINS



ACCEPTED

DATE		LOCATION	LAT N	LON E	Mw
1908 12 28	TSUN	Southern Calabria	38.15	15.68	7.24
1907 10 23	TSUN	Southern Calabria	38.13	16.02	5.87
1818 02 20	TSUN	Catania	37.60	15.14	6.23
1783/1 02 06	TSUN	Messina region	38.22	15.63	5.94
1783/2 02 05	TSUN	Southern Calabria	38.30	15.97	7.02
1693/2 01 11	TSUN	Eastern Sicily	37.14	15.01	7.41
1693/1 01 09	TSUN	Val di Noto	37.14	15.03	6.21
1542 12 10		Siracusa	37.21	14.94	6.77
1169 02 04	TSUN	Eastern Sicily	37.32	15.03	6.41
1125 06 07		Siracusa	37.08	15.28	5.78

Table 1 - Major historical earthquakes in the working area with Mw>5.8. In grey earthquakes that triggered the deposition of a seismo-turbidites in the analysed cores.

Inner shelf	Wide range of bathymetry (from shelf to slope)	Abyssal
<i>Ammonia</i> spp. <i>Elphidium</i> spp. <i>Asterigerinata mamilla</i> (Williamson, 1858) <i>Cibicides lobatulus</i> (Walker & Jacob, 1798) <i>Criboelphidium</i> spp. <i>Elphidium</i> spp. <i>Neocorbina terquemi</i> (Rzehak, 1888) <i>Nonion depressulum</i> (Walker & Jacob, 1798) <i>Nonionella turgida</i> (Williamson, 1858) <i>Rosalina</i> spp. <i>Valvulineria bradyana</i> (Fornasini, 1900)	<i>Bolivina</i> spp. <i>Bulimina</i> spp. <i>Cassidulina carinata</i> Silvestri, 1896 <i>Cassidulina laevigata</i> d'Orbigny, 1826 <i>Cibicidoides</i> spp. <i>Fissurina fimbriata</i> (Brady, 1882) <i>Fissurina orbignyana</i> (Seguenza, 1862) <i>Gavelinopsis praegeri</i> (Heron-Allen & Earland, 1913) <i>Globobulimina affinis</i> d'Orbigny, 1839 <i>Globocassidulina subglobosa</i> (Brady, 1881) <i>Gyroidina umbonata</i> (Silvestri, 1898) <i>Gyroidinoides</i> spp. <i>Lagena elongata</i> (Ehremberg, 1844) <i>Lagena laevis</i> (Montagu, 1803) <i>Lagena striata</i> (d'Orbigny, 1839) <i>Pullenia quinqueloba</i> (Reuss, 1851) <i>Pyrgo</i> spp. <i>Quinqueloculina viennensis</i> (Le Clavez & Le Calvaz, 1958) <i>Sigmoilina</i> spp. <i>Uvigerina</i> spp.	<i>Articulina tubulosa</i> (Seguenza, 1862)

Table 2 - Water depth distribution of the main benthic foraminifera in core samples.

CQ14_02 Core depth (cm)	Position relative to the turbidite	Type of sample	Lab. N.	Measured 14C age BP	Calibrated Age (2 σ) according to CALIB REV5.0.2 by (Stuiver <i>et al.</i> , 2005) $\Delta R=0$	Calibrated Age (2 σ) with $\Delta R=147\pm 43$ (weighted mean including 2 ΔR in the surrounding regions)
1 210-211	0,5 cm below T2/2 base	Foram	Poz-77891	1075 \pm 30	AD 1260-1391	AD 1322-1488
2 254-255	2 cm below ST3 base	Foram	Poz-77889	1575 \pm 30	AD 724-900	AD 824-1080
3 256,5-257,5	4,5 cm below ST3 base	Foram	Poz-77890	1845 \pm 30	AD 465-647	AD 591-805

Table 3 –

Bologna, 21/03/2016

The core findings of the manuscript “A depositional model for seismo-turbidites in confined basins based on Ionian Sea deposits” are summarised in the following list of highlights.

- 1- Influence of seismic shaking and tsunami wave loading on seismo-turbidite deposition;
- 2- First discovery of turbidite units recording basin wide seiching in the Ionian Sea;
- 3- Sediment characterization of tsunamite caps in the Ionian Sea;
- 4- Model of seismo-turbidite sequence for confined basins;
- 5- Multiple slope failures during AD 1908 Messina and AD 1693 Catania earthquakes.