

Cite this: *Polym. Chem.*, 2021, **12**, 4372

Synthesis of ethylene–norbornene–1-octene terpolymers with high 1-octene contents, molar masses, and tunable T_g values, in high yields using half-titanocene catalysts†

Laura Boggioni,^a Hitoshi Harakawa,^b Simona Losio,^a Kotohiro Nomura^a and Inconata Tritto^a

Terpolymerizations of ethylene (E) and norbornene (N) with 1-octene (O) using different aryloxo- or ketimide-modified half-titanocene catalysts, Cp^{*}TiCl₂(O-2,6-*i*-Pr₂C₆H₃) [Cp^{*} = indenyl (**1**), C₅Me₅ (Cp^{*}, **2**), ^tBuC₅H₄ (**3**)] and Cp^{*}TiCl₂(N=C^tBu₂) [Cp^{*} = ^tBuC₅H₄ (**4**), Cp (**5**)], in the presence of MAO cocatalysts were investigated. The microstructures, monomer contents, and molecular weights of the resultant terpolymers, and their thermal properties were determined. The ketimide-modified Cp^{*}TiCl₂(N=C^tBu₂) (**4** and **5**) exhibited higher catalytic activities and yielded higher molecular weight terpolymers, poly(E-*ter*-N-*ter*-O)s, than the aryloxo-modified Cp^{*}TiCl₂(O-2,6-*i*-Pr₂C₆H₃) (**1**–**3**); the 1-octene incorporation is often higher than that prepared using *ansa*-metallocenes, noticeably reaching 13.5 mol%. Terpolymers prepared using ketimide-modified Cp^{*}TiCl₂(N=C^tBu₂) possessed significantly higher M_n values than the E/N copolymers; the same trend is observed in the terpolymers prepared using the Cp^{*}-aryloxo analogue (**2**). This has been demonstrated to be correlated with the lower propensity of catalysts **4** and **5** to provide β-H elimination, which occurred at the last-inserted E unit, as suggested through the analysis of the vinyl end groups observed in the ¹H NMR spectra. This unique behaviour is quite different from that of well-developed *ansa*-metallocenes. Thus, poly(E-*ter*-N-*ter*-O)s with high O contents, molar masses, and T_g values from 23 °C to 153 °C were obtained in high yields using **2**, **4**, and **5** half-titanocene catalysts.

Received 12th May 2021

Accepted 1st July 2021

DOI: 10.1039/d1py00647a

rsc.li/polymers

Introduction

Transition metal catalyzed olefin polymerization plays a key role in the synthesis of polyolefins and accounts for almost 50% of the global production of commercialized synthetic polymers. In this research field, great attention has been paid to the synthesis of new polymers with specific functions that are very difficult to synthesize by ordinary catalysts; many studies in the development of metallocenes,^{1,2} constrained geometry catalysts,^{3,4} nonbridged half-metallocenes,^{5–7} and so called non-metallocene type^{8–13} catalysts have thus been reported for the purpose. Copolymerization is an important

tool that allows the modification of the physical and mechanical properties of the resultant polymers by varying the comonomer ratio and microstructure, which is possible by advances in catalyst design.^{1–23}

Cyclic olefin copolymers (COCs), prepared by metal catalyzed coordination polymerization with cyclic olefins, have promising commercial applications exemplified in optics, capacitor films, packaging, and medical containers. In particular ethylene (E)/norbornene (N) copolymers with more than 20 mol% of N content prepared using *ansa*-metallocene-based catalysts^{24,25} are amorphous thermoplastic materials, which exhibit interesting properties like excellent humidity barrier, variable and high glass transition temperatures, stiffness, thermoformability, notable biocompatibility, and chemical inertness. These properties are affected by the comonomer content and microstructure which are governed by the structure of the catalyst employed.^{26–39} Trade names of commercial grades of these copolymers are TOPAS⁴⁰ and APEL.⁴¹

The introduction of a third monomer into the poly(E-*co*-N) chain may result in polymers with enhanced mechanical or other physical properties. However, only several reports for terpolymerization with ethylene and norbornene have been

^aIstituto di Scienze e Tecnologie Chimiche “G. Natta”, Consiglio Nazionale delle Ricerche, Via A. Corti, 12, 20133 Milano, Italy.

E-mail: inconata.tritto@scitec.cnr.it

^bDepartment of Chemistry, Tokyo Metropolitan University, 1-1 Minami Osawa, Hachioji, Tokyo 192-0397, Japan. E-mail: ktnomura@tmu.ac.jp

† Electronic supplementary information (ESI) available: Determination of the monomer content; ¹H NMR data of the olefinic chain ends in the investigated terpolymers (Table 1S). Fig. 1S: DSC curves of entries 4–6 obtained using catalyst **2**; Fig. 2S: DSC; and Fig. 3S: GPC. See DOI: 10.1039/d1py00647a



known.^{42–49} α -Olefins of linear 1-octene and alicyclic vinylcyclohexane were considered in the terpolymerization with E and N by two *ansa*-metallocenes.⁴⁷ The presence of a long linear α -olefin within the copolymer backbone resulted in obtaining promising terpolymers with variable T_g and molar masses.

Nonbridged half-titanocenes containing anionic donor ligands of type, Cp'TiX₂(Y) (Cp' = cyclopentadienyl group and Y = aryloxo, ketimide, phosphinimide, *etc.*), are reported to be active for syntheses of new ethylene copolymers.⁵⁰ The aryloxo or the ketimide analogues, Cp'TiCl₂(O-2,6-*i*-Pr₂C₆H₃) or Cp'TiCl₂(N=C^{*t*}Bu₂), are, in particular, efficient for the copolymerization of ethylene with sterically encumbered olefins or cyclic olefins. Recently, ketimide-modified half-titanocenes, CpTiCl₂(N=C^{*t*}Bu₂), known as active catalysts for E-*co*-N copolymerization,⁵⁰ showed high catalytic activity with efficient N incorporation in the copolymerization of N with α -olefins affording high molecular weight copolymers with a high N content, unimodal molecular weight distribution and composition.⁵¹ However, as far as we know, examples of terpolymerization of ethylene, norbornene and 1-octene with aryloxo or the ketimide modified analogues are not found in the literature. Thus, we herein explored the synthesis of terpolymers of ethylene and norbornene with 1-octene, using a series of selected half-titanocenes (1–5, Scheme 1) with the aim of expanding the copolymer properties.

Terpolymerizations were investigated by employing half-titanocene based precursors shown in Scheme 1 activated with methylaluminumoxane (MAO). In particular, the effect of termonomer (1-octene) concentration (conducted at high polymerization pressures and temperatures) on the polymerization behaviour was explored. Polymer analysis, including microstructure and end group analyses and determination of molar mass and thermal properties, shed light on the factors that determine termonomer insertion and chain termination. We herein demonstrate that these half-titanocene catalysts, unlike *ansa*-metallocenes, allow one to obtain poly(E-*ter*-N-*ter*-O)s with both high molar masses

and O content, to modulate O and N incorporation in terpolymers and hence their T_g values in a range from 23 °C to 153 °C.

Experimental

Materials and general

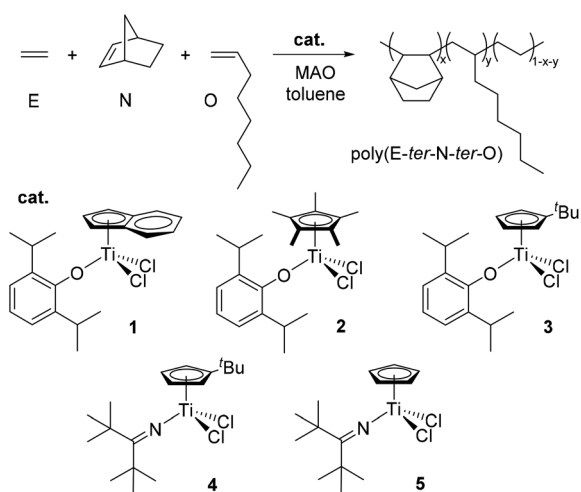
All experiments with air-sensitive compounds were carried out under a nitrogen atmosphere using the standard Schlenk technique or using a drybox. Ethylene and nitrogen gases were purified by passing through a column of BTS-catalysts and molecular sieves. Freshly distilled (anhydrous, oxygen free) toluene over Na was used. Norbornene (Sigma-Aldrich Co. LLC) was also distilled from Na under a nitrogen atmosphere and used as a stock solution dissolved in toluene. 1-Octene (anhydrous, 98%, Sigma-Aldrich Co. LLC) distilled over CaH₂ was stored under a nitrogen atmosphere in the presence of molecular sieves. Methylaluminumoxane (MAO, 10 wt% solution in toluene, Crompton) was dried prior to use (50 °C, 3 h, 0.1 mmHg) by removing toluene and unreacted AlMe₃ (TMA). (Indenyl)TiCl₂(O-2,6-*i*-Pr₂C₆H₃)¹⁶ (1), Cp*TiCl₂(O-2,6-*i*-Pr₂C₆H₃) (2),¹⁶ (^{*t*}BuC₅H₄)TiCl₂(O-2,6-*i*-Pr₂C₆H₃) (3),¹⁶ (^{*t*}BuC₅H₄)TiCl₂(N=C^{*t*}Bu₂) (4),¹⁵ and CpTiCl₂(N=C^{*t*}Bu₂) (5)¹⁵ were prepared according to the reported procedure. C₂D₂Cl₄ was purchased from Merck KGaA and used as received.

Analytical measurements

NMR spectra for analysis of the resultant copolymers were recorded on a Bruker NMRANCE400 spectrometer (400 MHz, ¹H; 100.58 MHz, ¹³C) operating at 100.58 MHz (¹³C) in the PFT mode working at 103 °C. The applied conditions were as follows: 10 mm probe, 90° pulse angle 13.5 μ s power, 64K data points; acquisition time 4.52 s; relaxation delay 16 s; and 3K–4K transient. Proton broad-band decoupling was achieved with a 1D sequence using bi-waltz-16-32-power gate decoupling. The terpolymer sample (*ca.* 100 mg) was dissolved in tetrachloroethane-*d*₂ in a 10 mm NMR tube. Chemical shifts for ¹H NMR spectra were referred to tetrachloroethane-*d*₂ (5.86 ppm) and hexamethyldisiloxane (HMDS) was used as the reference in the ¹³C spectra. Size exclusion chromatography (SEC, Waters, GPCV2000 high system) in *o*-dichlorobenzene (containing 0.05 wt/v% 2,6-di-*tert*-butyl-*p*-cresol) was conducted at 145 °C for the measurement of molecular weights and their distributions in the copolymers. The molecular weight was estimated on the basis of a calibration curve using standard polystyrene samples. The thermal properties of the resultant polymers were analysed by differential scanning calorimetry (DSC, PerkinElmer Pyris 1). The polymer samples were heated from –30 °C to 200 °C and then cooled (20 °C min^{–1}) under a nitrogen atmosphere; these heating/cooling cycles were repeated twice; and the glass transition temperature (T_g) was thus determined in the second heating scan (middle of the transition curve).

Polymerization procedure

Terpolymerization reactions were performed at 60 °C according to the following procedure. Into a 1-L Büchi BEP2000 lab-



Scheme 1 Studied half-titanocene-based catalyst precursors used in the terpolymerization of ethylene (E), norbornene (N) and 1-octene (O).



oratory autoclave (a type-I glass pressure vessel equipped with a heat jacket) pre-evacuated at 80 °C (for 60 min), a prescribed amount of toluene, norbornene, MAO were added under a nitrogen atmosphere. 1-Octene (prescribed amount) was then added to the solution. The reactor was then heated to 60 °C (with thermal equilibration), and ethylene was then filled at the prescribed pressure. Polymerization was initiated by injection of a toluene solution containing the precatalyst. During the polymerization, the ethylene pressure was kept constant (4 bar). The polymerization was terminated by injection of ethanol (2 mL) and HCl, and the resultant polymer was precipitated in acetone. The polymer slurry was stirred overnight, and the precipitates were collected by filtration, and the resultant polymers were suspended again in acetone with stirring. The polymers were then collected and dried *in vacuo* at 70 °C until their weights are constant.

Results and discussion

Synthesis and characterization of poly(ethylene-*ter*-norbornene-*ter*-1-octene)s

Selected results of terpolymerizations of ethylene (E) and norbornene (N) with 1-octene (O) by using half-titanocenes, [Cp' TiCl₂(O-2,6-*t*Pr₂C₆H₃), Cp' = indenyl (1), Cp* (2), ^tBuC₅H₄ (3), Cp' TiCl₂(N=C^tBu₂), Cp' = ^tBuC₅H₄ (4), and Cp (5)], activated with MAO, are presented in Table 1. The results of E/N copolymerization conducted under the same conditions are also presented in the table for comparison. The catalyst precursors were chosen as representative half-titanocenes concerning the synthesis of high molecular weight poly(E-*co*-N)s (4),⁵⁰ remarkable catalytic activity (5),⁵⁰ and high N incorporation (1).^{7,34} The [N]/[E] molar ratio was kept constant at 4.0 to prepare

terpolymers with N contents higher than 30 mol%, and thus possess high glass transition temperatures (*T*_gs). The termonomer (1-octene, O) concentration was varied as much as possible in order to obtain the high molecular weight (*M*_w) terpolymers with various (high) termonomer contents. The effect of feed composition was investigated at 60 °C under an ethylene pressure of 4.0 bar. Their microstructures and contents in each monomer were determined by means of ¹³C NMR spectroscopy. The molar masses (molecular weights) and the *T*_g values in the resultant polymers were determined by SEC and DSC measurements, respectively.

It is clear that the activities of E/N copolymerization and E/N/O terpolymerization by the ketimide modified, Cp' TiCl₂(N=C^tBu₂) (4, 5), catalyst systems were much higher than those by the aryloxo modified, Cp' TiCl₂(O-2,6-*t*Pr₂C₆H₃) (1-3), catalyst systems. This is especially evident from the results in the presence of the ^tBuC₅H₄ analogues (3 and 4). As reported in the E/N copolymerization,^{6,7,34,50} the activity was dependent upon the substituent on the cyclopentadienyl ligand employed; the *tert*-butyl substituted 3 is the least active among the aryloxo catalysts, whereas the unsubstituted CpTiCl₂(N=C^tBu₂) (5) is the most active among the ketimide modified catalysts. Moreover, it should be noted that the catalytic activities of 1, 2, and 5 increased by increasing the initial 1-octene concentration in the polymerizations. To our knowledge, the observed activities (by 5: 34 700–97 700 kg polymer per mol Ti h) are the highest among those reported for E/N/O terpolymerization by transition metal catalysts.

It was revealed that norbornene incorporation in the resultant copolymers prepared using the aryloxo catalyst systems, Cp' TiCl₂(O-2,6-*t*Pr₂C₆H₃) (conducted under the same conditions), follows the order 1 ≥ 3 ≫ 2, suggesting that the steric hindrance in Cp' leads to the lower N incorporation. The same

Table 1 Selected results and conditions for the terpolymerization of ethylene (E) with norbornene (N) and 1-octene (O) using Cp' TiCl₂(O-2,6-*t*Pr₂C₆H₃) [Cp' = indenyl (1), Cp* (2), and ^tBuC₅H₄ (3)]; Cp' TiCl₂(N=C^tBu₂) [Cp' = ^tBuC₅H₄ (4) and Cp (5)]-MAO catalyst systems^a

Entry	Catalyst	N/E/O	Time (h)	Activity ^b	E ^c (mol %)	N ^c (mol%)	O ^c (mol%)	<i>M</i> _n ^d × 10 ⁻³	<i>M</i> _w / <i>M</i> _n (PDI) ^d	<i>T</i> _g (<i>T</i> _m) ^e (°C)
1	1	4/1/0	0.75	405	32.8	67.2	—	8.6	Bimodal	131
2	1	4/1/0.5	0.50	413	34.4	58.0	7.6	8.4	2.99	94
3	1	4/1/1	0.25	879	31.5	59.1	9.4	8.0	2.11	81
4	2	4/1/0	0.50	109	69.8	30.2	—	59	3.01	65 (124) ^f
5	2	4/1/0.5	0.50	456	58.3	34.2	7.5	60	1.78	35 (125) ^f
6	2	4/1/1	0.17	1230	52.1	34.4	13.5	81	1.53	23 (127) ^f
7	3	4/1/0	0.50	n.d. ^g	53.2	46.8	—	14.6	Bimodal	—
8	3	4/1/0.5	0.50	99	38.2	56.1	5.7	11	2.52	123
9	3	4/1/1	0.50	43	38.1	52.0	9.9	9.0	2.59	—
10	4	4/1/0	0.50	16 900	47.1	52.9	—	222	2.52	n.d.
11	4	4/1/0.5	0.17	4640	49.6	46.9	3.5	420	2.12	104
12	4	4/1/1	0.08	10 400	50.7	44.8	4.5	442	1.86	103
13	5	4/1/0	0.17	21 300	40.9	59.1	—	203	3.96	n.d.
14	5	4/1/0.5	0.08	34 700	39.6	57.6	2.8	278	2.91	153
15	5	4/1/1	0.05	97 700	42.2	52.2	5.6	361	1.95	132

^a Polymerization conditions: catalyst = 5 μmol, [MAO]/[Ti] = 10.000, ethylene pressure = 4.0 bar, solvent = toluene, total volume of solution = 200 mL, and temperature = 60 °C. ^b Activity = (kg per mol Ti h). ^c Determined from the ¹³C NMR spectra in C₂D₂Cl₄ at 103 °C with HMDS as the reference. ^d Number average molecular weight (*M*_n, g mol⁻¹) determined by SEC analysis. ^e Determined from the DSC thermogram. ^f Entry 4 Δ*H* = 1.36 J g⁻¹; entry 5 Δ*H* = 0.77 J g⁻¹; entry 6 Δ*H* = 0.25 J g⁻¹. ^g n.d. = not determined.



trend was seen with the ketimide catalyst systems, Cp^{*}TiCl₂(N=C^tBu₂), and N incorporation with **5** is higher than that with **4**.

Interestingly, the addition of 1-octene resulted in unexpected features in comonomer incorporation. First, it is worth noting that 1-octene incorporation is often higher than that obtained under similar conditions with *ansa*-metallocenes,⁴⁷ noticeably reaching 13.5 mol%. Instructive is that 1-octene generally competes more with ethylene than with norbornene in the copolymerization using a series of the aryloxo catalysts, Cp^{*}TiCl₂(O-2,6-ⁱPr₂C₆H₃). For example, the resultant copolymer in the E/N copolymerization by the Cp^{*}-aryloxo analogue (**2**) contains 69.8 mol% of E and 30.2 mol% of N (entry 4), while the resultant terpolymer prepared at the same initial N/E molar ratio (with the addition of O) contains 52.1 mol% of E, 34.4 mol% of N and 13.5 mol% of O (entry 6). The same trend was also demonstrated by the *tert*-BuCp-aryloxo analogue (**3**, entry 7 vs. 8, 9). This trend, however, does not apply to that synthesized with the ketimide catalysts, Cp^{*}TiCl₂(N=C^tBu₂), in which 1-octene competes with norbornene. For example, the resultant copolymer in the E/N copolymerization prepared using the Cp-ketimide analogue (**5**) contains 40.9 mol% of E and 59.1 mol% of N (entry 13), while the resultant terpolymer prepared at the same initial N/E molar ratio (with the addition of O) contains 42.2 mol% of E, 52.2 mol% of N and 5.6 mol% of O (entry 15). Similarly, the resultant copolymer in the E/N copolymerization prepared using the *tert*-BuCp-ketimide analogue (**4**) contains 47.1 mol% of E and 52.9 mol% of N (entry 10), while the terpolymer contains 50.7 mol% of E, 44.8 mol% of N, and 4.5 mol% of O (entry 12). It seems that 1-octene substitutes the comonomer present in the copolymer in a greater amount.

It was revealed that the *M_n* values (determined by SEC) of the terpolymers obtained using the ketimide modified catalysts, Cp^{*}TiCl₂(N=C^tBu₂), are significantly higher than those obtained using the aryloxo catalysts, Cp^{*}TiCl₂(O-2,6-ⁱPr₂C₆H₃). Interestingly, the *M_n* values of terpolymers obtained using the *tert*-BuCp-ketimide analogue (**4**) are higher than those obtained using the Cp-ketimide analogue (**5**), and the *M_n* values increased upon increasing the initial O concentration in the feed. This is unexpected and in contrast to the results obtained for the terpolymer prepared using *ansa*-metallocenes.⁴⁷ This unexpected behaviour was also observed in the terpolymerization using the Cp^{*}-aryloxo analogue (**2**), Cp^{*}TiCl₂(O-2,6-ⁱPr₂C₆H₃), which exhibited the highest activities affording the copolymers with the highest *M_n* values among the aryloxo catalyst systems. The *M_n* values in the terpolymers prepared using **1** and **3** were relatively low, and the values decreased upon increasing the O content. It thus seems that higher molar masses were obtained with an increase in the 1-octene content in the copolymer parallel to the increase in activities.

Microstructure analysis of poly(ethylene-*ter*-norbornene-*ter*-1-octene)s

The resultant terpolymers were analysed by ¹³C NMR spectroscopy to estimate the monomer content and their micro-

structure. In the past, many efforts were dedicated to elucidating the ¹³C NMR spectra of poly(E-*co*-N) synthesized by metallocene based catalysts.^{31–38} It is possible to clarify the polymer microstructure at tetrad and pentad levels, which is dictated by the symmetry and ligand framework in the metallocene catalysts. The ¹³C NMR spectra of E-N terpolymers are of course more complex and general assignments have been made by comparison with the ¹³C NMR spectra of poly(E-*co*-N) and poly(E-*ter*-N-*ter*-O)⁴⁷ prepared with different catalytic systems in the literature.

Fig. 1 shows the ¹³C NMR spectra of poly(E-*co*-N)s synthesized with ketimide catalysts Cp^{*}TiCl₂(N=C^tBu₂). It is clear that these catalysts produce copolymers containing mostly *racemic* ENNE tetrads⁵² and a small number of *meso* tetrads in a ratio of 8/1 as well as *racemic-racemic* (*r*) and *racemic-meso* (*rm*) ENNN tetrads.^{36,37,52} Also *m* and *r* alternating NENE sequences are visible; in copolymers prepared using **4**, the ratio between NENE/ENNE is 1.1 and in those prepared using **5**, it is 0.73.

Fig. 2 shows the ¹³C NMR spectra of poly(E-*co*-N)s synthesized with the aryloxo Cp^{*}TiCl₂(O-2,6-ⁱPr₂C₆H₃) catalysts. The microstructure analysis of poly(E-*co*-N)s prepared using the Cp^{*}-aryloxo catalyst (**2**), which afforded the E/N copolymer with the lowest norbornene content possessed a significant degree of NEEN (16.2 mol%) and ENEE (16.4 mol%) tetrads along with a lower amount of alternating *m* NENE tetrads (8.4 mol%) and *r* NENE (6.3 mol%) tetrads. Higher selectivity for producing *r* ENNE tetrads has been demonstrated with respect to the *meso* ones, while less than 0.5 mol% of NNNE tetrads have been calculated.

The analysis of various stereosequences of poly(E-*co*-N) obtained by the indenyl catalyst (**1**) shows a high tendency of this catalyst to form ENNE tetrads (16.1 mol%) in the amount of *r* (9.0 mol%) and *m* (7.1 mol%) as well as *mm* NNN triads (1.2 mol%). Similar behaviour is shown by catalyst **3** with a marked tendency to form NNNE tetrads and NN dyads both *r* and *m* in a 2/1 ratio.

The ¹³C NMR spectra of poly(E-*ter*-N-*ter*-O) with the N/E/O molar ratio in the feed of 4/1/1 prepared using catalysts (^tBu₅H₄)TiCl₂(N=C^tBu₂) (**4**), CpTiCl₂(N=C^tBu₂) (**5**) and Cp^{*}TiCl₂(O-2,6-ⁱPr₂C₆H₃) (**2**) are shown for comparison in Fig. 3. A general structure of terpolymers with the carbon atom labelling based on accepted nomenclature⁴⁷ is also included in the figure. The analysis of various stereosequences of the terpolymers with a higher amount of 1-octene in the feed (entries 6, 12, 15, 3, and 9) shows the presence of *r* NN dyads; entries 15, 3 and 9 present *m* NN dyads in a small amount.

The complete analysis of the spectra at the tetrad level³⁸ showed that as in copolymers, catalyst **2** produced terpolymers with the lowest norbornene incorporation, but the highest incorporation of 1-octene compared to the other catalysts. The microstructure analysis revealed that the polymer possessed a high percentage of isolated norbornene units [NEEE (17.7 mol%) and ENEE (19.9 mol%)], a significant amount of NENE (12.5 mol%), and *r* ENNE sequences (4.2 mol%) in a moderate percentage. Instead, the microstructure analysis of



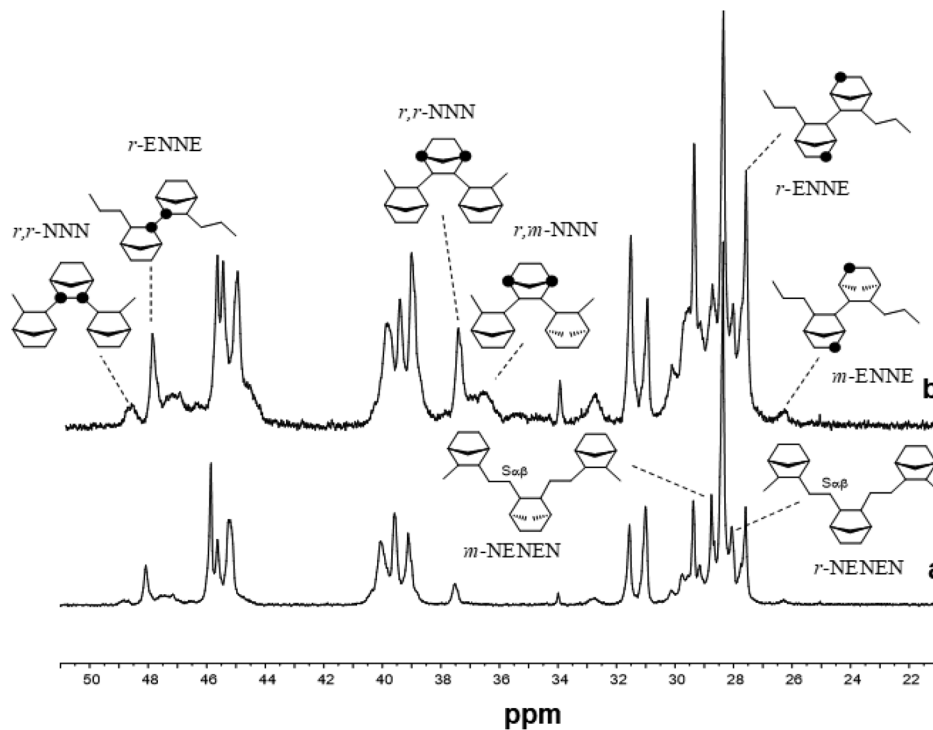


Fig. 1 ^{13}C NMR spectra of poly(E-co-N)s obtained using (a) $(t\text{-BuC}_5\text{H}_4)\text{TiCl}_2(\text{N}=\text{C}^t\text{Bu}_2)$ (4, entry 10) and (b) $\text{CpTiCl}_2(\text{N}=\text{C}^t\text{Bu}_2)$ (5, entry 13).

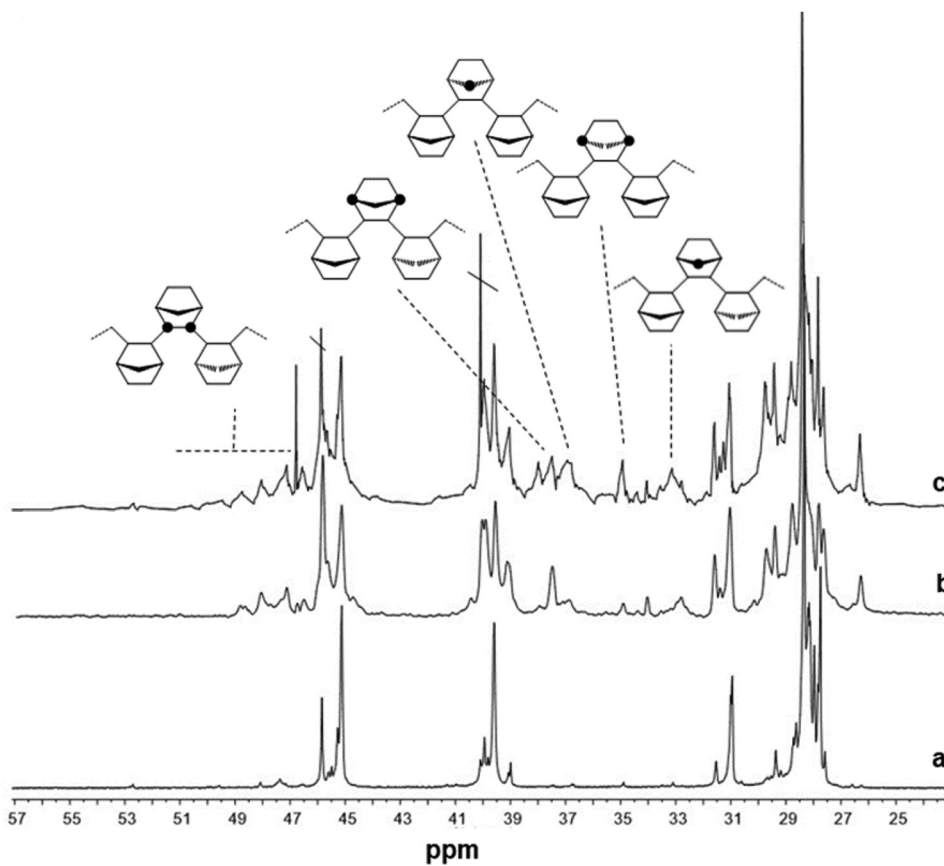


Fig. 2 ^{13}C NMR spectra of poly(E-co-N)s obtained using (a) $\text{Cp}^*\text{TiCl}_2(\text{O}-2,6\text{-}i\text{Pr}_2\text{C}_6\text{H}_3)$ (2, entry 4), (b) $(\text{Ind})\text{TiCl}_2(\text{O}-2,6\text{-}i\text{Pr}_2\text{C}_6\text{H}_3)$ (1, entry 1) and (c) $(t\text{-BuC}_5\text{H}_4)\text{TiCl}_2(\text{O}-2,6\text{-}i\text{Pr}_2\text{C}_6\text{H}_3)$ (3, entry 7).



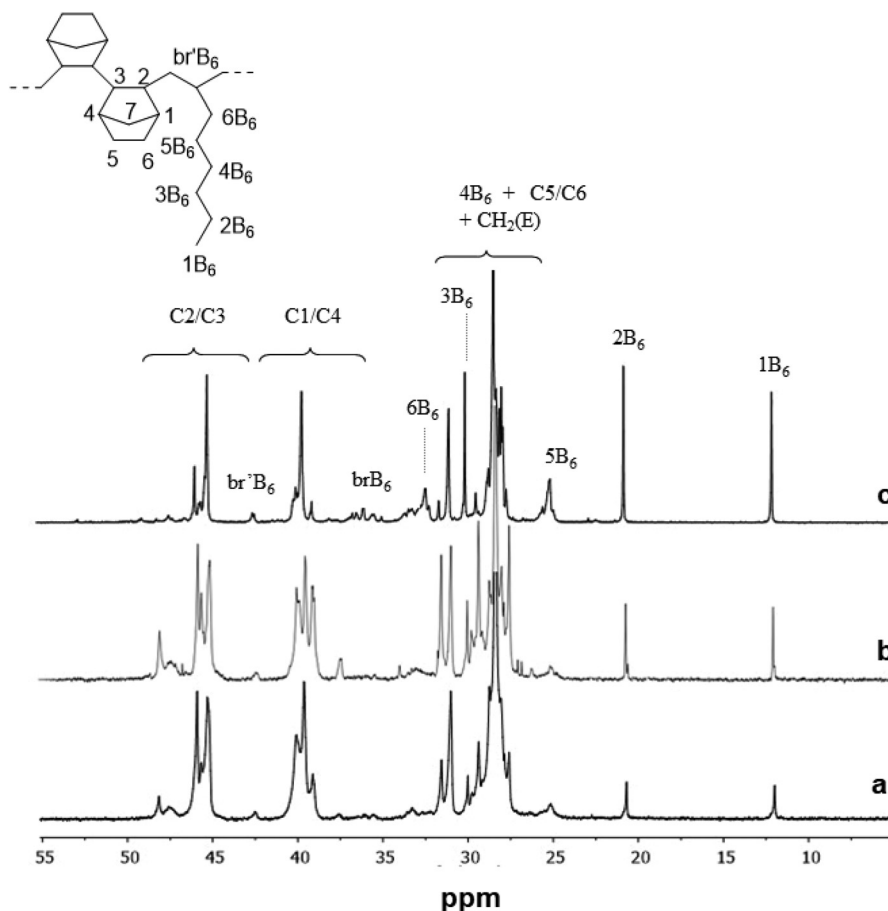


Fig. 3 ^{13}C NMR spectra of poly(E-ter-N-ter-O) obtained using (a) $(^t\text{BuC}_5\text{H}_4)\text{TiCl}_2(\text{N}=\text{C}^t\text{Bu}_2)$ (4, Table 1, entry 12), (b) $\text{CpTiCl}_2(\text{N}=\text{C}^t\text{Bu}_2)$ (5, Table 1, entry 15) and (c) $\text{Cp}^*\text{TiCl}_2(\text{O}-2,6\text{-}^i\text{Pr}_2\text{C}_6\text{H}_3)$ (2, Table 1, entry 6) catalysts with an N/E/O molar ratio in the feed of 4/1/1.

the terpolymer prepared using catalyst 1 proved that the resultant terpolymers possess marked selectivity with a high degree of alternating NENE (15.2 mol%) and ENNE tetrads (13.8 mol%), 8.7 mol% *racemic* and 5.1 mol% *meso* dyads, and gave a small amount of NNEN stereosequences (3.8 mol%). Catalyst 3, as catalyst 1, has a noticeable selectivity for producing ENNE sequences (15.7 mol%) mainly *racemic* (10.0 mol%) and alternating NENE sequences (14.9 mol%).

As to terpolymers obtained using ketimide $\text{Cp}^*\text{TiCl}_2(\text{N}=\text{C}^t\text{Bu}_2)$, it is clear from the spectra that 1-octene competes mainly with norbornene since the signals of ENNE and ENNN sequences are smaller than those of the corresponding copolymers. Terpolymers produced using catalyst 4 show a more alternating microstructure than the corresponding copolymers, with 18.0 mol% of NENE, 6.7 mol% of *r* ENNE and no *m* tetrads. Finally, catalyst 5 with the highest amount of *r* ENNE tetrads (15.4 mol%) and a small percentage of *meso* ones (1.7 mol%).

Chain end analysis and molar masses

As mentioned above, poly(E-ter-N-ter-O)s synthesized using 2, 4, and 5 catalyst systems have higher molar masses than the corresponding poly(E-co-N) copolymers, as evident from Fig. 4.

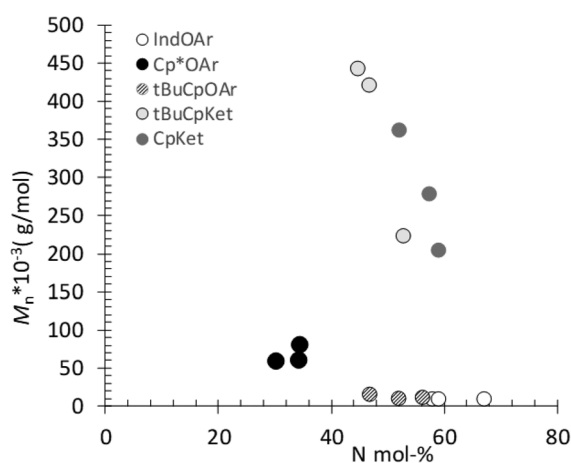


Fig. 4 Molar masses (M_n) versus N content in poly(E-ter-N-ter-O), evidencing the increase of M_n with the 1-octene content.

This is a remarkable contrast, since the molecular weight decreased upon increasing the termonomer feed concentration in the terpolymerization with *ansa*-metallocene catalysts, clearly suggesting that 1-octene plays a role as chain termin-



ation and/or transfer agents, which means that 1-octene plays a role in terminating/reinitiating a growing polymer chain.⁴⁷

Polymer chain end analysis can provide evidence for the reactions involved in chain growth termination in a catalytic system. The relative areas of signals characteristic of unsaturated end-groups, deriving from β -H transfer to the metal or to the monomer, designate the possible chain transfer pathways.

Fig. 5 and 6 show the olefinic region of the ^1H NMR spectra of poly(E-*ter*-N-*ter*-O) and poly(E-*co*-N) prepared using catalysts 2 and 5, respectively, recorded under the same conditions. The spectra revealed the existence of various olefinic double bonds, which are associated with terminal and internal unsaturations. Signal assignments made for poly(E-*ter*-N-*ter*-O)s are presented in Table 1S.†

Possible pathways accounting for the formation of terpolymer chain end unsaturations that occurred at the last inserted E, O, or N unit are shown in Scheme 2.

The ^1H NMR spectra of polymers synthesized using 2, shown in Fig. 5, are different from those of poly(E-*co*-N) obtained using 5 (Fig. 6). It is evident that in the ^1H NMR spectra of the polymers prepared using the ketimide modified $\text{Cp}^*\text{TiCl}_2(\text{N}=\text{C}^t\text{Bu}_2)$ (5) catalyst, which gives *co*- and terpolymers with low 1-octene and very high molar masses, only Vy-1 and Vy-2 chain ends are observed, while in the spectra of *co*- and terpolymers prepared using 2 we observe a more complex pattern; signals of the groups N-2 + E-7 + E-4 + E-5 + E-6 and of E-1, E-2, and E-3 are visible. We recall that E-4 + E-5 derives from the secondary insertion of Vy-1 followed by β -H elimination and N-2 derives from CH activation followed by isomerisation. Fig. 7 shows a comparison of the ^1H NMR spectra of poly(E-*co*-N)s prepared using 2 and 3. The difference between

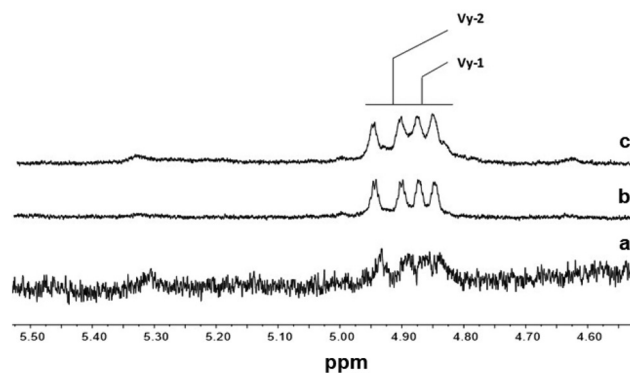


Fig. 6 ^1H NMR spectra (expanded in the olefinic region, in tetrachloroethane- d_2 at 103 °C) of polymers prepared using $\text{Cp}^*\text{TiCl}_2(\text{N}=\text{C}^t\text{Bu}_2)$ (5): (a) poly(E-*co*-N) (Table 1, entry 13); (b) poly(E-*ter*-N-*ter*-O) (Table 1, entry 14); and (c) poly(E-*ter*-N-*ter*-O) (Table 1, entry 15).

the two is in the pattern of Vy groups, which is more complex in the spectra of copolymers prepared using 3 and indicates that these copolymers, with high N contents and low molar masses, terminate more easily using β -H elimination occurred at the last E unit inserted after 2 or 3 N units. Thus, the factors that allow this catalyst to insert two or three consecutive N units are also those that induce low activity and low copolymer molar masses. Moreover, O-4 chain ends are well visible in the spectra of terpolymers as well as the signals of O-1, O-2, and O-3 end groups, which also arise from β -H elimination and 2-1 reinsertion.

The ^1H NMR spectra of terpolymers prepared using catalysts 1 and 3 (Fig. 8) are quite similar to those of 2. Some changes seem to arise from the vicinity at the chain ends of NN dyads or NNN triads with different microstructures.

Thermal analysis

The thermal properties of terpolymers synthesized with catalysts 1, 3, 4, and 5, by DSC thermal analysis, showed obvious single glass transition temperatures (T_g). This observation indicates that these terpolymers have a completely amorphous morphology. The terpolymers prepared using 2 with a higher E content and an atactic alternating microstructure also showed a small endothermic peak corresponding to the melting of the crystalline phase. The already small copolymer crystallinity $\Delta H = 1.36 \text{ J g}^{-1}$ decreases with an increase in the O content in the terpolymers $\Delta H = 0.77$ and 0.25 J g^{-1} for entries 5 and 6, respectively (see Fig. 1S†). Glass transition temperatures spanned from 23 °C to 153 °C.

In Fig. 9, the T_g values of all the synthesized polymers are shown *versus* the norbornene (Fig. 9a) and 1-octene (Fig. 9b) contents calculated from the ^{13}C NMR spectra. It turned out that the T_g values of the polymers from 2 are the lowest, and since they have quite similar N content, their T_g values are strongly affected by the termonomer (O) content, as shown in Fig. 9b. A similar trend is visible in the T_g values of the polymers prepared using the other two aryloxo catalysts 1 and 3, and these T_g values are higher than those obtained using 2

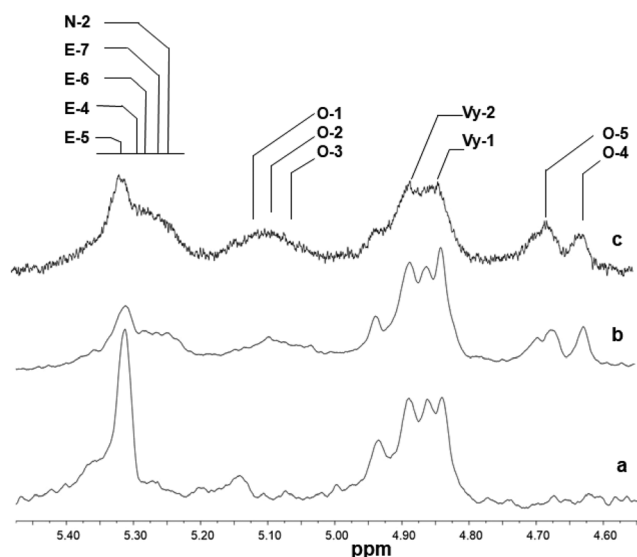
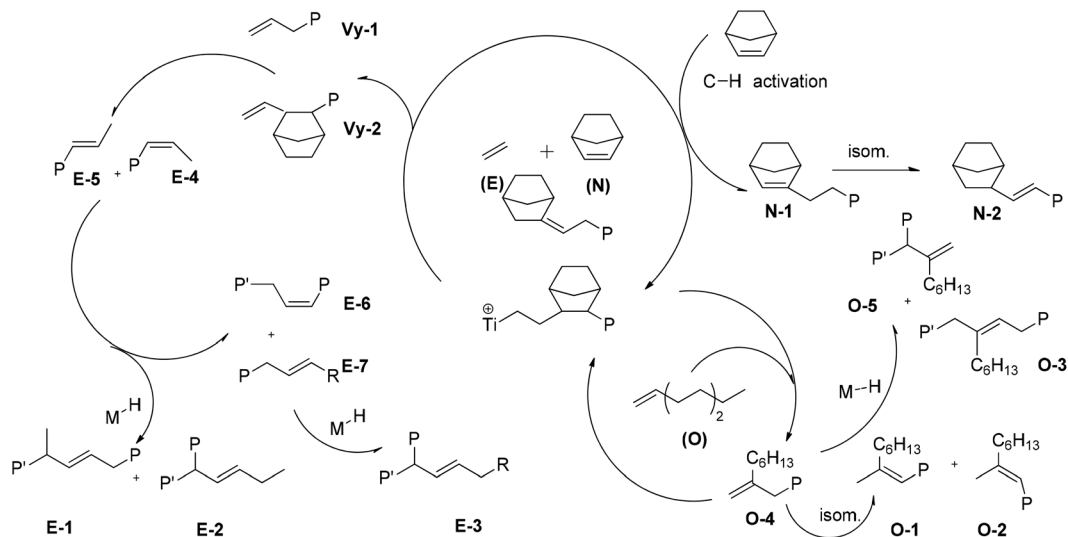


Fig. 5 ^1H NMR spectra (expanded in the olefinic region, in tetrachloroethane- d_2 at 103 °C) of polymers prepared using $\text{Cp}^*\text{TiCl}_2(\text{O}-2,6\text{-}i\text{-Pr}_2\text{C}_6\text{H}_3)$ (2): (a) poly(E-*co*-N) (Table 1, entry 4); (b) poly(E-*ter*-N-*ter*-O) (Table 1, entry 5); and (c) poly(E-*ter*-N-*ter*-O) (Table 1, entry 6).





Scheme 2 Possible pathways accounting for the observed terpolymer chain unsaturations.

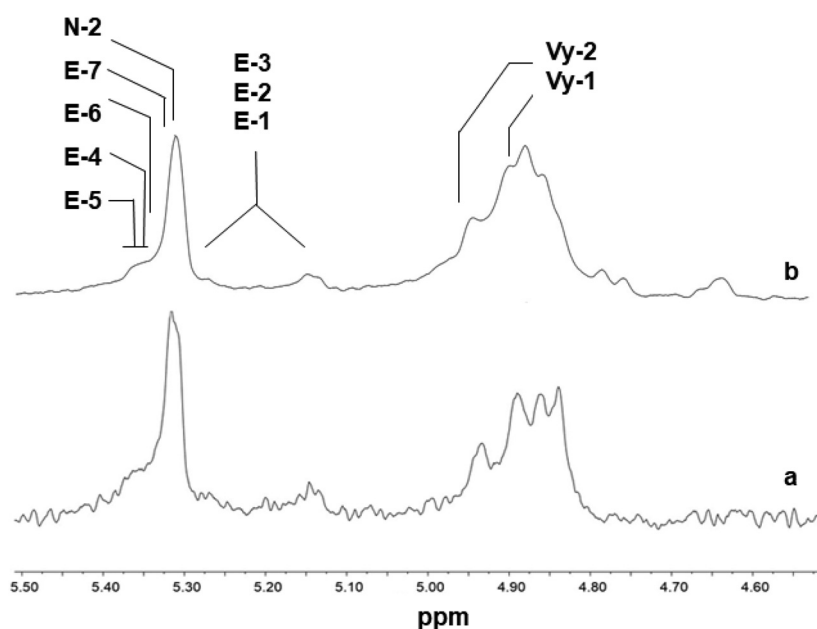


Fig. 7 ^1H NMR spectra (expanded in the olefinic region, in tetrachloroethane- d_2 at 103 °C) of poly(E-co-N)s synthesized using (a) $\text{Cp}^*\text{TiCl}_2(\text{O}-2,6\text{-}i\text{Pr}_2\text{C}_6\text{H}_3)$ (2, Table 1, entry 4, % N = 30.2) and (b) $(t\text{BuC}_5\text{H}_4)\text{TiCl}_2(\text{O}-2,6\text{-}i\text{Pr}_2\text{C}_6\text{H}_3)$ (3, Table 1, entry 7, % N = 46.8).

due to the high N content of the terpolymers despite their low molar masses. The T_g values of the polymers with high molar masses in the series prepared using ketimide catalysts 4 and 5 clearly depend on the N content in the terpolymer and increase with an increase in the cyclic monomer content as expected. Fig. 9b clearly shows the strong dependence of T_g values on the O content of polymers synthesized using each catalyst.

Mechanistic considerations

From the results reported above, it is clear that aryloxo $\text{Cp}^*\text{TiCl}_2(\text{O}-2,6\text{-}i\text{Pr}_2\text{C}_6\text{H}_3)$ (1–3) and ketimide $\text{Cp}^*\text{TiCl}_2(\text{N}=\text{C}^t\text{Bu}_2)$ (4 and 5) precatalysts have a unique behaviour in E–N terpolymeri-

zation with 1-octene regarding 1-octene incorporation, 4 and 5 also regarding terpolymer molar masses, especially when compared to similar terpolymerization with *ansa*-metallocenes.⁴⁷

Comparison with *ansa*-metallocenes. It may be instructive to make a comparison between the copolymer and terpolymer microstructures obtained using *ansa*-metallocenes and those obtained using half-titanocenes conducted in this study.

The analysis of the copolymer microstructure reveals that $\text{CpTiCl}_2(\text{N}=\text{C}^t\text{Bu}_2)$ (5) behaves somehow similar to C_s $i\text{Pr}(\text{Cp})(\text{Flu})\text{ZrCl}_2$ or $\text{Ph}_2\text{C}(\text{Cp})(\text{Flu})\text{ZrCl}_2$, which gives copolymers with only *r* ENNE sequences, while $\text{CpTiCl}_2(\text{N}=\text{C}^t\text{Bu}_2)$ produces copolymers with a higher N content, which contain besides *r*



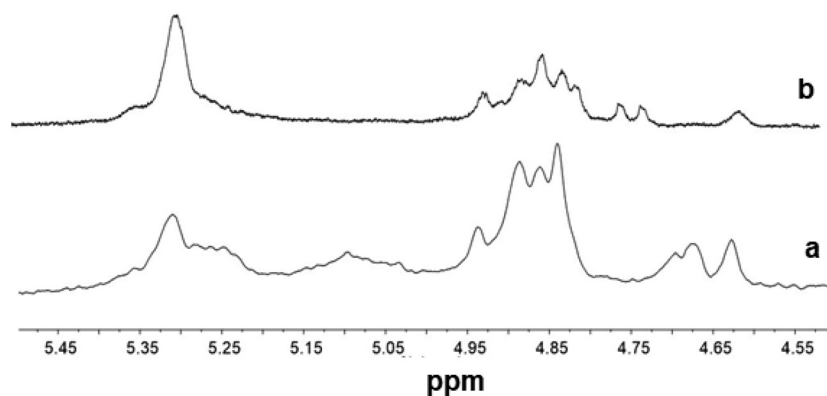


Fig. 8 ^1H NMR spectra (expanded in the olefinic region, in tetrachloroethane- d_2 at 103 $^\circ\text{C}$) of poly(E-ter-N-ter-O)s synthesized using (a) $\text{Cp}^*\text{TiCl}_2(\text{O}-2,6\text{-}^i\text{Pr}_2\text{C}_6\text{H}_3)$ (2, Table 1, entry 5) and (b) $(\text{Ind})\text{TiCl}_2(\text{O}-2,6\text{-}^i\text{Pr}_2\text{C}_6\text{H}_3)$ (1, Table 1, entry 2).

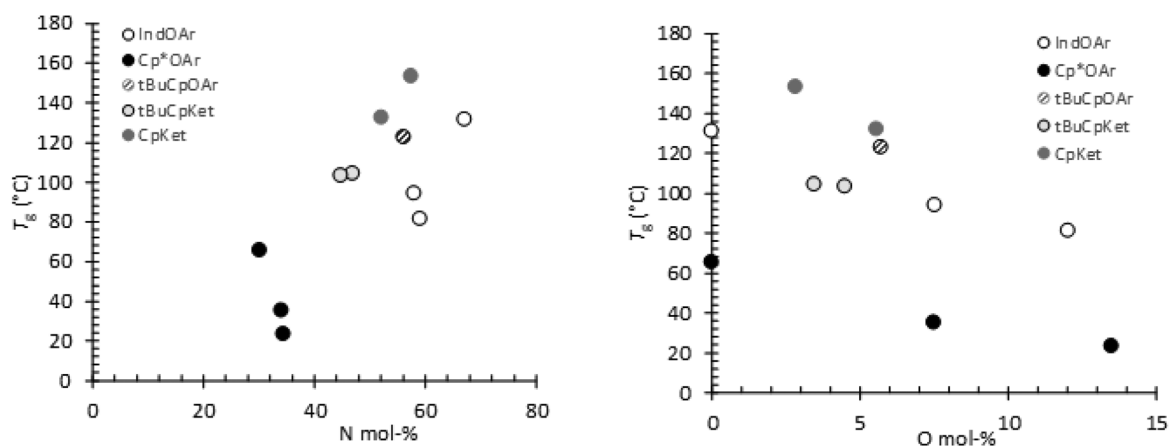


Fig. 9 T_g versus N content (left – a) and O content (right – b) in poly(E-ter-N-ter-O)s.

ENNE also a smaller amount of *m* ENNE and some *rr* and *mr* ENNN sequences. The same catalyst 5 allows higher O incorporation than *ansa*-metallocenes; in terpolymers ENNE and ENNN sequences decrease. This along with the great increase in the molar masses of terpolymers by the ketimide catalysts indicate that olefin insertion after NN dyads and NNN triads is relatively slow, though these catalysts allow high N incorporation. Thus, after two or three N units a kind of “semidormant state” is formed, which is reactivated by 1-octene insertion and this may explain why 1-octene competes with norbornene. The exceptional molar masses of these terpolymers, compared with those by *ansa*-metallocenes, arise from less tendency to give β -H elimination.

As to *tert*-butyl substitution, the copolymers obtained using $(^i\text{BuC}_3\text{H}_7)_2\text{TiCl}_2(\text{N}=\text{C}^i\text{Bu}_2)$ (4) are characterized by a lower N content with respect to the copolymers prepared using the Cp analogue (5), still containing mainly *r* ENNE sequences. In *ansa*-metallocenes, $^i\text{Pr}(3\text{-}^i\text{Pr-Cp})(\text{Flu})\text{ZrCl}_2$ ³⁵ or $^i\text{Pr}(3\text{-}^i\text{Bu-Cp})(\text{Flu})\text{ZrCl}_2$ at a high N/E ratio produces mainly isotactic alternating poly(E-*co*-N) in contrast to the unsubstituted $^i\text{Pr}(\text{Cp})(\text{Flu})\text{ZrCl}_2$ which gives copolymers with only *r* ENNE sequences.

Probably, norbornene and ethylene insertions occur at the same site by a Cossee’s migratory mechanism as in *ansa*-metallocenes. However, the copolymer chain, owing to a more open structure of ketimide catalysts does not need to always back-skip to the original position to proceed with the next insertion, allowing 5 to form some *m* ENNE sequences. *tert*-Bu catalyst 4 makes a second N insertion possible without the need for the copolymer chain to back-skip to the original position which results in the isotactic alternating microstructure of poly(E-*co*-N)s by ^iPr or $^i\text{Bu}(\text{Cp})(\text{Flu})\text{ZrCl}_2$.

For understanding the catalytic behavior of aryloxo Cp’/TiCl₂(O-2,6- $^i\text{Pr}_2\text{C}_6\text{H}_3$) catalytic systems, it can be useful to compare the copolymers prepared using $\text{Cp}^*\text{TiCl}_2(\text{O}-2,6\text{-}^i\text{Pr}_2\text{C}_6\text{H}_3)$ (2) with those prepared using $\text{Me}_2\text{Si}(\text{Me}_4\text{Cp})(\text{N}^i\text{Bu})\text{TiCl}_2$, the so-called constrained geometry catalysts (CGCs) with an open structure. The metal center of CGCs when activated with MAO gives copolymers containing both *m* and *r* alternating NEN-sequences and isolated norbornene units. It has been shown that this catalyst allows for poly(E-*co*-N) containing long-chain branches formed by the insertion of a macromonomer obtained after β -H elimination.³³



Thus, it is reasonable that **2** incorporates a high amount of 1-octene.

It is worth recalling that the ^1H NMR spectra of all poly(*E-co-N*)s and poly(*E-ter-N-ter-O*), obtained using $\text{Cp}^*\text{TiCl}_2(\text{O}-2,6\text{-}^i\text{Pr}_2\text{C}_6\text{H}_3)$ and from the other aryloxo $\text{Cp}'\text{TiCl}_2(\text{O}-2,6\text{-}^i\text{Pr}_2\text{C}_6\text{H}_3)$ catalyst systems, show signals of E-1, E-2 and E-3 trans vinyl chain ends which derive from the isomerization of Vy-1 and Vy-2 chain ends. Moreover, in the spectra of terpolymers, terminal groups at the last 1-octene unit arising from $\beta\text{-H}$ elimination and 2-1 reinsertion are visible. The spectra of copolymers prepared using **1** indicate that these copolymers, with high N content and low molar masses, terminate more easily by $\beta\text{-H}$ elimination at the last E unit inserted after 2 or 3 N units. Thus, the factors that allow this catalyst to insert two or three consecutive N units are also those that induce low activity and low copolymer molar masses.

This comparison indicates that ketimide catalysts have a more rigid structure than aryloxo catalysts. The higher mobility of the framework of the aryloxo catalysts is responsible for the lower molar masses and for the high O and N incorporation. This explains the high incorporation of comonomers with highly steric bulk such as 2-methyl-1-pentene, cyclohexene, and *tert*-butylethylene in ethylene copolymerization using the aryloxo analogues.^{6,7}

Terpolymerization activity, 1-octene incorporation and molar masses. As to 1 octene incorporation, it seems that 1-octene substitutes the comonomer present in the copolymer in a greater amount. Copolymers obtained from catalysts **2** and **3** in low yields contain more than 50 mol% of E, and this indicates that the insertion rate of norbornene is low. In particular, catalyst **2** gives an almost alternating copolymer and thus 1-octene, alpha olefin, competes with ethylene. The copolymers prepared using **1**, **4** and **5** catalysts have the N content above 50 mol% and 1-octene substitutes norbornene. For these systems the increase in activity and molar masses during terpolymerization can be attributed to the so-called comonomer effect, an increase in the propagation rate due to the introduction of 1-octene which makes the growing terpolymer chain less rigid and facilitates the access of the monomers to the active site. This may also explain the narrowing of the PDIs of terpolymers with respect to the copolymers. Moreover, from the above studies, it was concluded that the presence of NNN sequences in the copolymers makes more probable the formation of the quasi dormant state and termination, and these NNN sequences that are produced due to the insertion of 1-octene in terpolymers are reduced.

Finally, an increase in molar masses along with the O content, which is the novelty in these terpolymerizations, arises also from the lower tendency of these catalysts to give $\beta\text{-H}$ elimination.

Conclusions

Investigation of E-N terpolymerization with 1-octene as the α olefin using aryloxo $\text{Cp}'\text{TiCl}_2(\text{O}-2,6\text{-}^i\text{Pr}_2\text{C}_6\text{H}_3)$ (**1**–**3**) and keti-

imide $\text{Cp}'\text{TiCl}_2(\text{N}=\text{C}^t\text{Bu}_2)$ (**4**–**5**) precatalysts sheds light on the factors that influence the growth or the termination of terpolymer chains with these half-titanocene precatalysts.

The activities of copolymerization and terpolymerization by the ketimide modified $\text{Cp}'\text{TiCl}_2(\text{N}=\text{C}^t\text{Bu}_2)$ are higher than those using the aryloxo $\text{Cp}'\text{TiCl}_2(\text{O}-2,6\text{-}^i\text{Pr}_2\text{C}_6\text{H}_3)$ catalyst systems. The steric hindrance of ligand substitution of the catalyst also affects activities; *tert*-butyl substituted **3** and **4** are the least active, among the aryloxo and ketimide modified catalysts, respectively.

Regarding 1-octene incorporation, it is very interesting that O incorporation is often higher than that obtained under similar conditions with *ansa*-metallocenes, noticeably reaching 13.5 mol%. Moreover, in the series with aryloxo $\text{Cp}'\text{TiCl}_2(\text{O}-2,6\text{-}^i\text{Pr}_2\text{C}_6\text{H}_3)$ catalysts, in general, 1-octene competes more with ethylene than with norbornene, while in the series synthesized with the ketimide $\text{Cp}'\text{TiCl}_2(\text{N}=\text{C}^t\text{Bu}_2)$ catalysts 1-octene competes with norbornene.

Microstructural analysis of co- and terpolymers reveals that those prepared using aryloxo $\text{Cp}'\text{TiCl}_2(\text{O}-2,6\text{-}^i\text{Pr}_2\text{C}_6\text{H}_3)$ catalysts are mainly atactic, while those prepared using the ketimide $\text{Cp}'\text{TiCl}_2(\text{N}=\text{C}^t\text{Bu}_2)$ catalysts are more syndiotactic.

As far as polymer molar masses are concerned, the molar masses of co- and terpolymers synthesized using the ketimide precatalysts are much higher than those synthesized using the aryloxo precatalysts. Interestingly, terpolymers prepared using the ketimide modified $\text{Cp}'\text{TiCl}_2(\text{N}=\text{C}^t\text{Bu}_2)$ catalysts have significantly higher molar masses than copolymers, and the same trend is observed in terpolymers obtained using the aryloxo $\text{Cp}'\text{TiCl}_2(\text{O}-2,6\text{-}^i\text{Pr}_2\text{C}_6\text{H}_3)$ catalyst system **2**. This behaviour is unique and is very different from that of well-developed *ansa*-metallocenes, important catalysts for α -olefin and norbornene copolymerization, where 1-octene behaves as a chain termination/transfer agent.

Chain end group analysis gave evidence for the low tendency of catalysts **4** and **5** to give $\beta\text{-H}$ elimination at the last inserted E or O unit, while in the ^1H NMR spectra of poly(*E-co-N*) polymers prepared using **1**–**3** catalysts, signals of the groups arising from $\beta\text{-H}$ elimination and reinsertion and subsequent isomerisation are visible. In the ^1H NMR spectra of poly(*E-ter-N-ter-O*) with high O contents and low molar masses using the same catalysts, signals of chain end groups formed after the last O insertion are also well visible.

Finally, DSC thermal analysis showed clearly the strong dependence of T_g values on the O content of polymers synthesized using each catalyst. In particular, **2**, **4**, and **5** half-titanocene catalysts allow one to obtain poly(*E-ter-N-ter-O*) with high molar masses and to modulate O and N incorporation and thus T_g values from 23 °C to 153 °C. These amorphous and more flexible polymers, due to their expected excellent optical properties, will allow the broadening of COC applications, for example, in electronic flexible devices.

Conflicts of interest

There are no conflicts to declare.



Acknowledgements

We thank Dr Fabio Bertini, Fulvia Greco and Daniele Piovani for their help with the DSC, NMR and SEC characterization, respectively. This project by KN was partly supported by the Grant-in-Aid for Scientific Research from the Japan Society for the Promotion of Science (JSPS, no. 18H01982 and 21H01942).

Notes and references

- H. H. Brintzinger, D. Fischer, R. Mülhaupt, B. Rieger and R. M. Waymouth, *Angew. Chem., Int. Ed. Engl.*, 1995, **34**, 1143–1170.
- W. Kaminsky and M. Arndt, *Adv. Polym. Sci.*, 1997, **127**, 143–187.
- A. L. McKnight and R. M. Waymouth, *Chem. Rev.*, 1998, **98**, 2587–2598.
- H. Braunschweig and F. M. Breitling, *Coord. Chem. Rev.*, 2006, **250**, 2691–2720.
- K. Nomura, J. Liu, S. Padmanabhan and B. Kitiyanan, *J. Mol. Catal. A: Chem.*, 2007, **267**, 1–29.
- K. Nomura, *Dalton Trans.*, 2009, **41**, 8811–8823.
- K. Nomura and J. Liu, *Dalton Trans.*, 2011, **40**, 7666–7682. References including a list of reported complexes are cited therein.
- G. J. P. Britovsek, V. C. Gibson and D. F. T. Wass, *Angew. Chem., Int. Ed.*, 1999, **38**, 428–447.
- P. D. Bolton and P. Mountford, *Adv. Synth. Catal.*, 2005, **347**, 355–366.
- K. Nomura and S. Zhang, *Chem. Rev.*, 2011, **111**, 2342–2362. References (concerning vanadium complex catalyzed olefin polymerization) are cited therein.
- H. Makio, H. Terao, A. Iwashita and T. Fujita, *Chem. Rev.*, 2011, **111**, 2363–2449.
- C. Redshaw and Y. Tang, *Chem. Soc. Rev.*, 2012, **41**, 4484–4510.
- J. A. Gladysz, *Chem. Rev.*, 2000, **100**, 1167–1168.
- H. G. Alt, *Coord. Chem. Rev.*, 2006, **250**, 1–272.
- K. Nomura, N. Naga, M. Miki and K. Yanagi, *Macromolecules*, 1998, **31**, 7588–7597.
- K. Nomura, K. Fujita and M. Fujiki, *Organometallics*, 1998, **17**, 2152–2154.
- Metal-catalysed Polymerisation*, ed. B. Milani and C. Claver, *Dalton Trans.*, 2009, vol. 41, pp. 8769–9076.
- Metal-catalyzed polymerization of olefins*, ed. B. Liu, M. Terano, V. Busico, W.-Y. Wong and Y. Tang, *J. Organomet. Chem.*, 2015, vol. 798, pp. 291–436.
- G. J. Domski, J. M. Rose, G. W. Coates, A. D. Bolig and M. Brookhart, *Prog. Polym. Sci.*, 2007, **32**, 30–92.
- J. P. McInnis, M. Delferro and T. Marks, *Chem. Rev.*, 2011, **111**, 2450–2485.
- J. P. McInnis, M. Delferro and T. Marks, *Acc. Chem. Res.*, 2014, **47**, 2545–2557.
- A. Valente, A. Mortreux, M. Visseaux and P. Zinck, *Chem. Rev.*, 2013, **113**, 3836–3857.
- H. Harakawa, S. Patamma, A. C. Boccia, L. Boggioni, D. R. Ferro, S. Losio, K. Nomura and I. Tritto, *Macromolecules*, 2018, **51**, 853–863.
- W. Kaminsky, A. Bark and R. Steiger, *J. Mol. Catal.*, 1992, **72**, 109–119.
- W. Kaminsky and M. Arndt-Rosenau, in *Metallocene-based Polyolefins*, ed. J. Scheirs and W. Kaminsky, Wiley, Chichester, 2000, p. 89 and references therein.
- D. Ruchatz and G. Fink, *Macromolecules*, 1998, **31**, 4674–4680.
- N. Herfert, P. Montag and G. Fink, *Makromol. Chem.*, 1993, **194**, 3167–3182.
- M. Arndt-Rosenau and I. Beulich, *Macromolecules*, 1999, **32**, 7335–7343.
- I. Tritto, L. Boggioni, M. C. Sacchi and P. Locatelli, *J. Mol. Catal. A: Chem.*, 1998, **133**, 139–150.
- A. Provasoli, D. R. Ferro, I. Tritto and L. Boggioni, *Macromolecules*, 1999, **32**, 6697–6706.
- I. Tritto, C. Marestin, L. Boggioni, L. Zetta, A. Provasoli and D. R. Ferro, *Macromolecules*, 2000, **33**, 8931–8944.
- I. Tritto, C. Marestin, L. Boggioni, L. Zetta, A. Provasoli, H. H. Brintzinger and D. R. Ferro, *Macromolecules*, 2001, **34**, 5770–5777.
- K. Thorshaug, R. Mendichi, I. Tritto, S. Trinkle, C. Friedrich and R. Mülhaupt, *Macromolecules*, 2002, **35**, 2903–2911.
- K. Nomura, M. Tsubota and M. Fujiki, *Macromolecules*, 2003, **36**, 3797–3799.
- I. Tritto, L. Boggioni and D. R. Ferro, *Macromolecules*, 2004, **37**, 9681–9693.
- T. Hasan, T. Shiono and T. Ikeda, *Makromol. Symp.*, 2004, **213**, 123–129.
- T. Hasan, T. Shiono and T. Ikeda, *Macromolecules*, 2004, **23**, 8503–8509.
- I. Tritto, L. Boggioni and D. R. Ferro, *Coord. Chem. Rev.*, 2006, **250**, 212–241.
- I. Tritto, A. Ravasio, L. Boggioni, F. Bertini, J. Hitzbleck and J. Okuda, *Macromol. Chem. Phys.*, 2010, **211**, 897–904.
- see <http://www.topas.com> and M.-J. Brekner, F. Osan, J. Rohrmann and M. Antberg, Process for the preparation of chemically homogeneous cycloolefin copolymers, *U.S. Patent* 5324801, 1994.
- See <https://jp.mitsuichemicals.com/>.
- H.-T. Ban, N. Nishii, Y. Tsunogae and T. Shiono, *J. Polym. Sci., Part A: Polym. Chem.*, 2007, **45**, 2765–2773.
- S. Liu, Z. Yao, K. Cao, B. Li and S. Zhu, *Macromol. Rapid Commun.*, 2009, **30**, 548–553.
- H. Lasarov and T. T. Pakkanen, *Macromol. Rapid Commun.*, 2001, **22**, 434–438.
- R. A. Wendt and G. Fink, *Macromol. Chem. Phys.*, 2000, **201**, 1365–1373.
- F. G. Sernetz and R. Mülhaupt, *J. Polym. Sci., Part A: Polym. Chem.*, 1997, **35**, 2549–2560.
- R. Marconi, A. Ravasio, L. Boggioni, F. Di Colo, I. Tritto and U. M. Stehling, *Macromolecules*, 2011, **44**, 795–804.



- 48 R. Tanaka, M. Goda, Z. Cai, Y. Nakayama and T. Shiono, *Polymer*, 2015, **70**, 252–256.
- 49 L. Boggioni, N. G. Galotto, F. Bertini and I. Tritto, *Polymers*, 2016, **8**, 60–78.
- 50 K. Nomura, W. Wang, M. Fujiki and J. Liu, *Chem. Commun.*, 2006, **25**, 2659–2661.
- 51 W. Zhao and K. Nomura, *Macromolecules*, 2016, **49**, 59–70.
- 52 C2/C3 of norbornene can be either *S/R* or *R/S*, so the relationship between two subsequent norbornene units (NN) or two norbornenes in alternating NEN sequences can be either *erythro* di-isotactic (*meso*, *m*) or *erythro* di-syndiotactic (*racemic*, *r*); for more details see ref. 38.

